

REFERENCES

- Ahr, W. M. 1973. The carbonate ramp : an alternative to the shelf model. Trans. Gulf Coast Association of Geol. Soc., 23rd Annual Conv., pp. 221-225.
- Altermann, W. 1989. Facies Development in the Permian Petchabun basin, central Thailand. Berlin : WVB-Verlag fur Wissenschaft und Bildung.
- Anderton, R., 1985. Clastic facies models and facies analysis. In P.J. Brenchly and Williams, B.P.J. (eds.), Sedimentology, Recent Developments and Applied Aspects, pp. 31-47. London: Geological Society.
- Asama, K. 1966. Permian plant from Petchabun, Thailand, and problems of floral migration from Gondwanaland. Natural Science Museum Tokyo Bulletin 9(2): 171-211.
- Assavaphachara, S. 1998. Lithostratigraphy of upper Paleozoic carbonate rocks in the Southern part of Changwat Loei. Master's Thesis, Department of Geology, Graduated School, Chulalongkorn University.
- Beeser, W. F., and Abele, K. 1963. Geology of Muak-Lek area. Bangkok : Department of Geology, Chulalongkorn University.
- Bissell, H. J., and Chilinger, G. V. 1967. Classification of sedimentary carbonate rocks. In G. V. Chilinger, et al. (eds.), Developments in Sedimentology 9A, pp. 87-168. Amsterdam: Elsevier.
- Bleakly, D., Stephan, E. A., Cratchley, C. R., Workman, D. R., Newman, D., Coger, N., Sanevong, P., Thanvarachorn, P., Intrakhao, B., and Chaungpaisal, S. 1965. Regional geology of the Loei-Chiangkarn area of Thailand and detailed investigation of Phu Khum Lead-Zinc mineral prospect. London: Overseas Geological Survey. 67p.

- Borax, E., and Stewart, R. D., 1966. Note on the Paleozoic stratigraphy of northeastern Thailand. A paper prepared for the economic commission for Asia and Far East meeting. Bangkok : ECAFE.
- Brown, R. W. 1943. Cretaceous-Tertiary boundary in the Denver Basin, Colorado. Geological Society America Bull 54 : 65-86.
- Brown, G. F., Buravas, S., Charaljavanaphet, J., Jalichandra, N., Johnston, W.D., Sresthaputra, V. and Taylor, G. C. 1951. Geologic reconnaissance of the mineral deposits of Thailand. U.S. Geological Bulletin 984 : 1-183.
- Bunopas, S. 1981. Paleogeographic history of western Thailand and adjacent parts of Southeast Asia – A plate tectonics interpretation. Doctoral dissertation, Victoria University of Wellington.
- Bunopas, S., and Vella, P. 1983. Tectonics and geologic evolution of Thailand. In P. Nutalaya (ed.), Proceedings of the Workshop on Stratigraphic Correlation between Thailand and Malaysia, Sept. 8-10, pp. 307-322. Hat Yai: Geological Society of Thailand and Malaysia.
- Bunopas, S., and Vella, P. 1992. Geotectonics and geologic evolution of Thailand. In C. Piancharoen et al. (eds.), Proceedings of the National Conference on Geological Resources of Thailand: Potential for Future Developments, Nov. 17-24, pp. 209-288. Bangkok: Department of Mineral Resources.
- Bunopas, S. 1992. Regional stratigraphic correlation in Thailand. In C. Piancharoen et al. (eds.), Proceedings of the National Conference on Geological Resources of Thailand: Potential for Future Developments, Nov. 17-24, pp. 209-288. Bangkok: Department of Mineral Resources.

- Campbell H. J. 1997. The Middle Permian *Alatochonchid* bivalves of Thailand. In P. Dheeradilok et al. (eds.), Proceedings of the International Conference on Stratigraphic and Tectonics Evolution of Southeast Asia and South Pacific, Aug. 19-24, p. 129. Bangkok: Department of Mineral Resources.
- Carozzi, A. V. 1978. Carbonate rock depositional models. New Jersey: Prentice-Hall.
- Chaodamrong, P. 1992. Geological Report No.0187. Bangkok: Geological Survey Division, Department of Mineral Resources. (In Thai)
- Charoenprawat, A., and Wongwanich, T. 1976. Preliminary geology of Changwat Loei. Bangkok: Geological Survey Division, Department of Mineral Resources.
- Charoenprawat, A., Wongwanich, T., Tantiwanit, W., and Theetiparivattra, U. 1984. Geological map of Thailand on 1:250,000 scale: Sheet Changwat Loei (NE 47-12). Bangkok: Geological Survey Division, Department of Mineral Resources.
- Charoentitirat, T. 2003. Stratigraphic comparison between the Nam Mahoran formation and Pha Nok Khao formation. Proceedings of 1st International Conference on Paleontology of Southeast Asia, Oct. 27-30, pp. 36-38. Mahasarakham: Mahasarakham University.
- Chonglakmani, C., Sattayarak, N., Kanchanapan, P., and Sarapirom, S. 1979. Geological Map of Thailand 1:250,000 scale: Sheet Udonthani – Wang Vieng (NE 48-9). Bangkok: Geological Survey Division, Department of Mineral Resources.
- Chonglakmani, C., and Sattayarak, N. 1984. Geological Map of Thailand 1:250,000 scale: Sheet Changwat Petchabun (NE 47-16). Bangkok: Geological Survey Division, Department of Mineral Resources.

- Chonglakmani, C. and Fontaine, H., 1992. The Lam Narai – Petchabun region: a platform of early carboniferous to Late Permian. Proceedings of Technical Conference on Development Geology of Thailand into the year 2000, Bangkok 1990, p. 39-98.
- Chutakositkanon, V. 1999. Characteristic of detrital chromian spinels in sandstone from the Nam Duk Formation, Amphoe Nam Nao, Changwat Petchabun. Master's Thesis, Department of Geology, Graduated School, Chulalongkorn University.
- Dawson, O., and Racey, A. 1993. Fusuline-calcareous algae biofacies of Ratburi Limestone, Saraburi, central Thailand. Journal of Southeast Asian Earth Science 8 (1-4) : 49-65.
- Department of Mineral Resources 1987. Geological Map of Thailand on scale 1: 2,500,000. Bangkok: Geological Survey Division.
- Department of Mineral Resources 1992. Lexicon of stratigraphic names of Thailand. Bangkok: Department of Mineral Resources.
- Department of Mineral Resources 2001. Geology of Thailand. Bangkok: Department of Mineral Resources. (in Thai)
- Endo, R. 1969. Fossil algae from the Khao Phlong Phrab District in Thailand. Geology and Paleontology of Southeast Asia 7: 33-85.
- Flügel, E. 1982. Microfacies analysis of limestone. Berlin-Heidelberg: Springer-Verlag.
- Folk, R. L. 1959. Practical petrographic classification of limestones. American Association of Petroleum Geology Bulletin 44: 1-38.
- Folk, R. L. 1962. Spectral subdivision of limestone types. In W. E. Ham (ed.), American Association of Petroleum Geology Memorial 1: 62-84.

- Folk, R. L. 1965. Some aspects of recrystallization in ancient limestones. In L. C. Pray and R. C. Murray (eds.), Dolomitization and Limestone Diagenesis, Society of economic Paleontology and Mineralogy Special Publication 13: 14-48.
- Folk, R. L. 1968. Petrology of sedimentary rocks. Austin: Hemphill's Bookstore.
- Fontaine, H., and Suteethorn, V. 1988. The Upper Paleozoic and Mesozoic fossils of West Thailand. CCOP Technical Bulletin 20: 217 p.
- Fontaine, H., Sattayarak, N., and Suteethorn, V. 1994. Permian corals of Thailand. CCOP Technical Bulletin 24: 171 p.
- Fontaine, H., and Salyapongse, S. 1997. Biostratigraphy of East Thailand. In P. Dheeradilok et al. (eds.), Proceeding of the International Conference on Stratigraphic and Tectonics Evolution of Southeast Asia and South Pacific, Aug. 19-24, pp. 73-82. Bangkok: Department of Mineral Resources.
- Fontaine H., Salyapongse, S., Tien, N. D., and Vachard, D. 2002. The Permian of Khao Tham Yai area in Northeast Thailand. In N. Mantajit (ed.), Proceeding of the Symposium on Geology of Thailand, Aug. 26-31, pp. 58-76. Bangkok: Department of Mineral Resources.
- Grabau, A. W. 1903. Paleozoic coral reefs. Geological Society of America Bulletin 14: 337-354.
- Harrison, D., Chaodumrong, P., and Charusribandhu, M. 1997. Assessment of Limestone Resources from Suratthani Province, Thailand. In P. Dheeradilok et al. (eds.), Proceedings of the International Conference on Stratigraphic and Tectonics Evolution of Southeast Asia and South Pacific, Aug. 19-24, pp. 640-649. Bangkok: Department of Mineral Resources.

- Heim, A. and Hirschi, H. 1939. A section of the mountain of northwestern Siam. *Eclogae. Geol. Helv.* 39: 1-16
- Hinthong, C. 1981. Geological map of Thailand 1:250,000 scale: Sheet Changwat Phra Nakorn Sri Ayutthaya (ND 47-8). Bangkok: Geological Survey Division, Department of Mineral Resources.
- Hinthong, C. 1985. Upper Paleozoic system: The Central Plain and Lower Petchabun Ranges. Bangkok: Geological Survey Division, Department of Mineral Resources.
- Homrareun, G. 1994. Geophysical study of Pha Doen area, Amphoe Muang, Changwat Loei. Bangkok: Department of Geology, Chulalongkorn University.
- Hutchison, C. S. 1974. Laboratory Handbook of Petrographic Techniques. New York : Wiley & Son, Inc.
- Ishibashi, T. Nakomsri, N., and Nagai, K. 1994. Permian-Triassic boundary and fauna at Doi Pha Phlung, northern Thailand. The memoirs of the Faculty of Science, Kyushu University, Series D., Earth and Planetary Science XXVII 2: 23-40.
- Jaiboon, T. 2001. Biostratigraphy of Tak Fa formation at Khao Wong and Khao Chakkachan, Amphoe Nong Muang, Changwat Lop Buri with reference to Fusulinids. Master's Thesis, Department of Geology, Graduated School, Chulalongkorn University.
- James, N. P. 1984. Shallowing-upward sequences in carbonates. In R. G. Walker (ed.), Facies model. Toronto : Geoscience Canada, Reprint Series 1.
- Javanaphet, C. 1969. Geological map of Thailand scale 1:1,000,000. Bangkok: Department of Mineral Resources.

- Jin, Y., Wardlaw, B. R., Glenister, B. F., and Kotlyar, G. V. 1997. Permian Chronostratigraphic Subdivision. Episodes March: 10-15.
- Jirawanwasana, P. 1995. Permian Corals in Loei area. Bangkok: Department of Geology, Chulalongkorn University.
- Konno, E. 1964. Some Permian plants from Thailand. Geology and Paleontology of Southeast Asia 1: 33-34.
- Kozar, M. G., Crandall, G. F., and Hall, S. E. 1992. Integrated structural and stratigraphy study of Korat basin, Rat Buri Limestone (Permian); Thailand. In C. Piancharoen et al. (eds.), Proceedings of the National Conference on Geological Resources of Thailand: Potential for Future Developments, Nov. 17-24, pp. 692-736. Bangkok: Department of Mineral Resources.
- Lee, W. 1923. Reconnaissance geological report of the Khorat region, Province of Nakhon Rajasima, Udon, Roi Et and Ubon Siam. Unpublished report No.9. Bangkok: Geological Survey Division, Department of Mineral Resources.
- Madee, T. 1997. Taxonomic Study of Fossil corals in Limestone Beds from Ban Hua Krok Nakorn Ratcha-Sima, Khao Wong Chan Daeng Lop Buri and Pha Doen Loei. Bangkok: Department of Geology, Chulalongkorn University.
- Minato, M. 1944. An occurrence of *Wentzellela subtimorica* in North Thailand. Proc. Imp. Acad. Tokyo 20 : 104-106.
- Nakornsri, N. 1981. Geological Survey Report Number 3, geology and mineral resources of Amphoe Ban Mi (ND47-4) scale 1:250,000. Bangkok: Department of Mineral Resources.

- Nakornsri, 1976. Geological Map of Amphoe Ban Mi (ND47-4) scale 1:250,000. Bangkok: Department of Mineral Resources.
- Noipow, N. 1999. Permian Corals from Limestone Beds at Wat Tham Rattana Prakasit, Amphoe Muak Lek, Changwat Saraburi. Bangkok: Department of Geology, Chulalongkorn University.
- Ozawa, T. 1970. Variation and relative growth of *Colania douvillei* (OZAWA) from the Rat Buri Limestone. Geology and Paleontology of Southeast Asia 2: 1-42.
- Phothong, P 1985. The Geology and Structure of Rat Buri Group in a Portion of the East Part of Changwat Saraburi, central Thailand. Master's Thesis, Department of Geology, Graduated School, Chulalongkorn University.
- Pitakpaivan, K. 1966. Fusulines of Rat Buri Limestone of Thailand. Geology and Paleontology of Southeast Asia 2: 63-155.
- Pitakpaiwan, K., Ingavat, R., and Pariwatvorn, P. 1969. Fossils of Thailand vol. 1. Bangkok: Department of Mineral Resources.
- Piyasin, S. 1972. Geological map of Thailand on 1:250,000 scale: Sheet Changwat Lampang (NE 47-11). Bangkok: Geological Survey Division, Department of Mineral Resources.
- Raksaskulwong, 2002. Upper Paleozoic Rocks of Thailand. In N. Mantajit (ed.), Proceeding of the Symposium on Geology of Thailand, Aug. 26-31, pp. 29-34. Bangkok: Department of Mineral Resources.
- Read, J. F., 1982. Carbonate platforms of passive (extensional) continental margins: type, characters and evolution. Tectonophysics 81: 195-212.

- Sakagami, S., and Hatta, A. 1982. On the Upper Permian *Paleofusulina-Colaniella* fauna from Khao Doi Pha Phung, north Thailand. Geology and Paleontology of Southeast Asia 14: 49-81.
- Sashida, K., and Nakornsri, N., 1997. Lower Permian radiolarian faunas from Khanu Chert Formation distributed in the Sukhothai area, northern central Thailand. In P. Dheeradilok et al. (eds.), Proceeding of the International Conference on Stratigraphic and Tectonics Evolution of Southeast Asia and South Pacific, Aug. 19-24, pp. 97-108. Bangkok: Department of Mineral Resources.
- Sawata, H. 1985. Some Interesting Feature for Geological Study in the Northeastern Region of Thailand. Proceeding of the Conference on Geology and Mineral Resources Development of the Northeast Thailand, pp. 26-29. Khon Kaen: Khon Kaen University.
- Siriteerasarn, K. 1997. Permian Amonoids of Khao Nong Hoi, Amphoe Pak Chong, Changwat Nakorn Ratcha Sima. Master's Thesis, Department of Geology, Graduated School, Chulalongkorn University.
- Sukiyama, T. 1982. Middle Permian Corals from Ratburi Limestone in the Khao Khao area Saraburi, Central Thailand. Geology and Paleontology of Southeast Asia 24 : 1-22.
- Termier, H., Termier, G., and Lapperenet, F. 1973. Grand bivalves récifaux du Permien supérieur de Afghanistan central. Ann. Soc. Géol. Nord XCII 1: 75-80.
- Thambunya, S. 1999. Lithostratigraphy and Sedimentology of the Khao Khad Formation in the vicinity of Khao Chan, Ban Sapanhin, Amphoe Muak Lek, Changwat Saraburi. Master's Thesis, Department of Geology, Graduated School, Chulalongkorn University.

- Thompson, M. L. 1964. Fusulinacea. In R. C. Moore (ed.), Treatise on Invertebrate Paleontology. Lawrence: The Geology Society of America and University of Kansas Press.
- Titirananda, O. 1976. Aspects of Stratigraphy and Paleontology of Permian Rat Buri Limestone of Saraburi, central Thailand. Doctoral dissertation, Bedford College. University of London.
- Toriyama, R., and Suki, 1959. Permian Fusulinids from Central Thailand. The memoirs of the Faculty of Science, Kyushu University, Series D., Earth and Planetary Science IX 1: 17-32.
- Toriyama, R. and Kanmera, K. 1968. Fusuline fossils from Thailand, part II. Two new Permian genera from Thailand. Geology and Paleontology of Southeast Asia 4: 29-44.
- Toriyama, R., Kanmera, K., and Ingavat, R. 1969. Fusuline fossils from Thailand, part V. Neofusulinella from Thailand. Geology and Paleontology of Southeast Asia 7: 15-32.
- Toriyama, R., and Pitakpaivan, K. 1973. Fusuline fossils from Thailand, part VII. Middle Permian fusulines from Wat Kirinakratanaram, central Thailand. Geology and Paleontology of Southeast Asia 12: 43-60.
- Toriyama, R., Kanmera, K., Kaewbaidhoon, S. and Hongnusunthi, A. 1974. Biostratigraphic zonation of the Rat Buri Limestone in the Khao Phlong Phrab Area, Sara Buri, central Thailand. Geology and Paleontology of Southeast Asia 14: 25-47.
- Toriyama, R. 1976. Fusuline fossils from Thailand, Part IX, Permian fusuline from Rat Buri Limestone in the Khao Phlong Phrab Area, Sara Buri, Central Thailand. Geology and Paleontology of Southeast Asia 17: 1-116.

- Toriyama, R., Hamada, T., Igo, H., Ingavat, R., Kanmera, K., Kobayashi, T., Koike, T., Ozawa, T., Pitakpaivan, K., Piyasin, S., Sakagami, S., Yanagida, J., and Yin, E. H. 1975. The Carboniferous and Permian Systems in Thailand and Malaysia. Geology and Paleontology of Southeast Asia 15: 39-76.
- Toriyama, R. and Kanmera, K. 1977. Fusuline fossils from Thailand, part X. The Permian fusuline from the limestone Conglomerate formation in the Khao Phlong Phrab Area, Sara Buri, central Thailand. Geology and Paleontology of Southeast Asia 18: 1-27.
- Toriyama, R. 1978. Fusuline fossils from Thailand, part XI, Shell Destruction of Verbeekinids in the fusuline fauna of Khao Khao, Sara Buri, central Thailand. Geology and Paleontology of Southeast Asia 19: 1-116.
- Toriyama, R. and Kanmera, K. 1979. Fusuline fossils from Thailand, part XII. The Permian fusulines from Rat Buri Limestone in the Khao Khao Area, Sara Buri, central Thailand. Geology and Paleontology of Southeast Asia 20: 23-93.
- Wielchosky, C. C., and Young, J. D. 1985. Regional facies variation in Permian rocks of the Petchabun fold and thrust belt, Thailand. In P. Thavarachorn et al. (eds.) Proceeding of the Conference on Geology and Mineral resources development of the Northeast, Thailand, pp. 41-55. Khon Kaen: Khon Kaen University.
- Willson, J. L. 1975. Carbonate facies in geologic history. New York: Springer-Verlag.
- Wilson, J. L., and Jordan, C. 1983. Middle Shelf Environment. In P. A. Scholle et al. (eds.), Carbonate Depositional Environments, American Association of Petroleum Geologist Memoir 33: 297-344.
- Yanagida, J. 1964. Permian brachiopods from Central Thailand. The memoirs of the Faculty of Science, Kyushu University, Series D., Earth and Planetary Science XV 1:1-22.
- Yavichai, P. 1993. The preliminary mineral exploration at Lop Buri area. Bangkok: Mineral Resources Development Project, Department of Mineral Resources.



PLATES

ศูนย์วิทยทรัพยากร
จุฬาลงกรณ์มหาวิทยาลัย

Explanation of Plates

Plate 1

Figs. 1-6 *Colania sp.*.....page 89

1, 3, and 5. Axial sections (X 15), Sample 5-3-1F(B4), 12-5-1F(D34)
and 12-15-1F(D44).

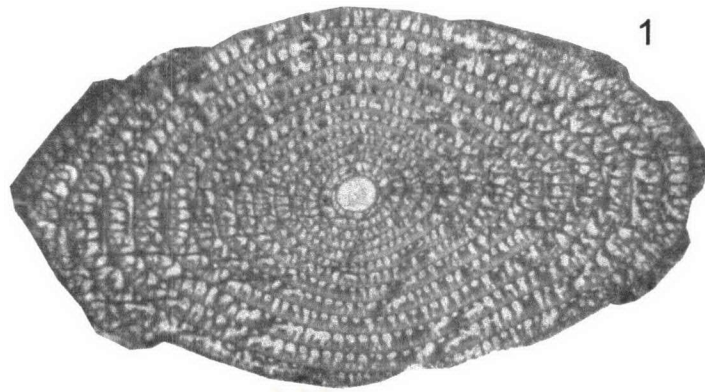
2 and 4. Sagittal sections (X 15), Sample 10-15-1F(C17) and 11-10-1F(D22).

6. Oblique section (X15), Sample 6-27-7F(B44), 7-8-2F(E6).

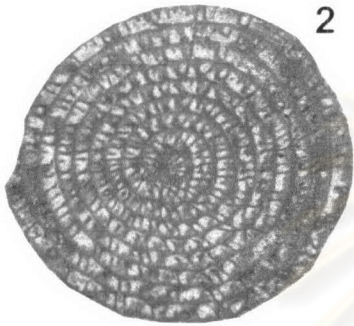


ศูนย์วิทยทรัพยากร
จุฬาลงกรณ์มหาวิทยาลัย

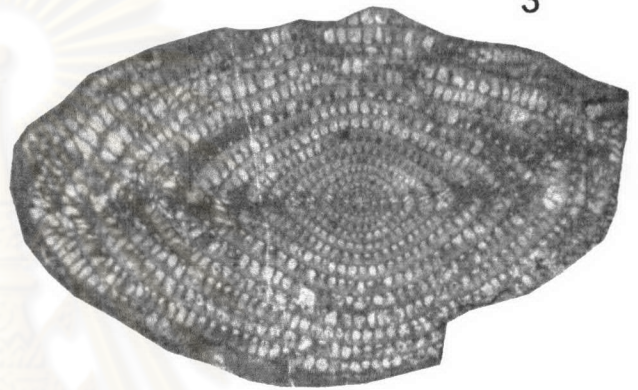
Plate 1



1



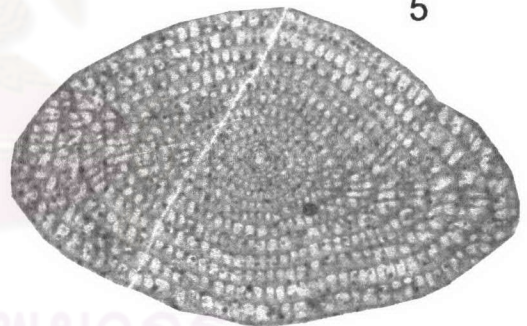
2



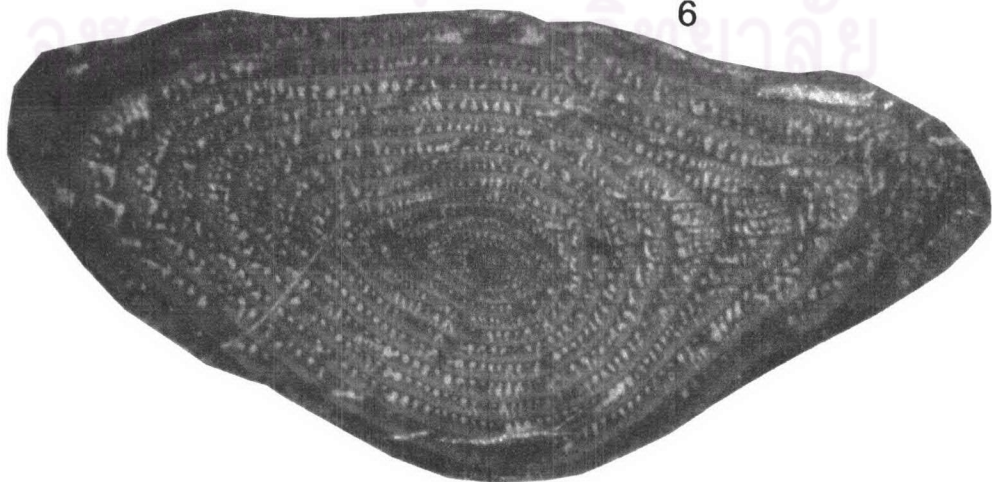
3



4



5



6

Explanation of Plates

Plate 2

Figs. 1-4 *Sumatrina* cf. *longissima* Deprat, 1914.....page 89

- 1 and 2. Axial sections (X 20), Sample 6-22-2F(B39) and 12-9-1F(D38).
3. Sagittal section (X 25), Sample 2-5-1F(D8).
4. Oblique section (X 20), Sample 12-9-1F(D38).

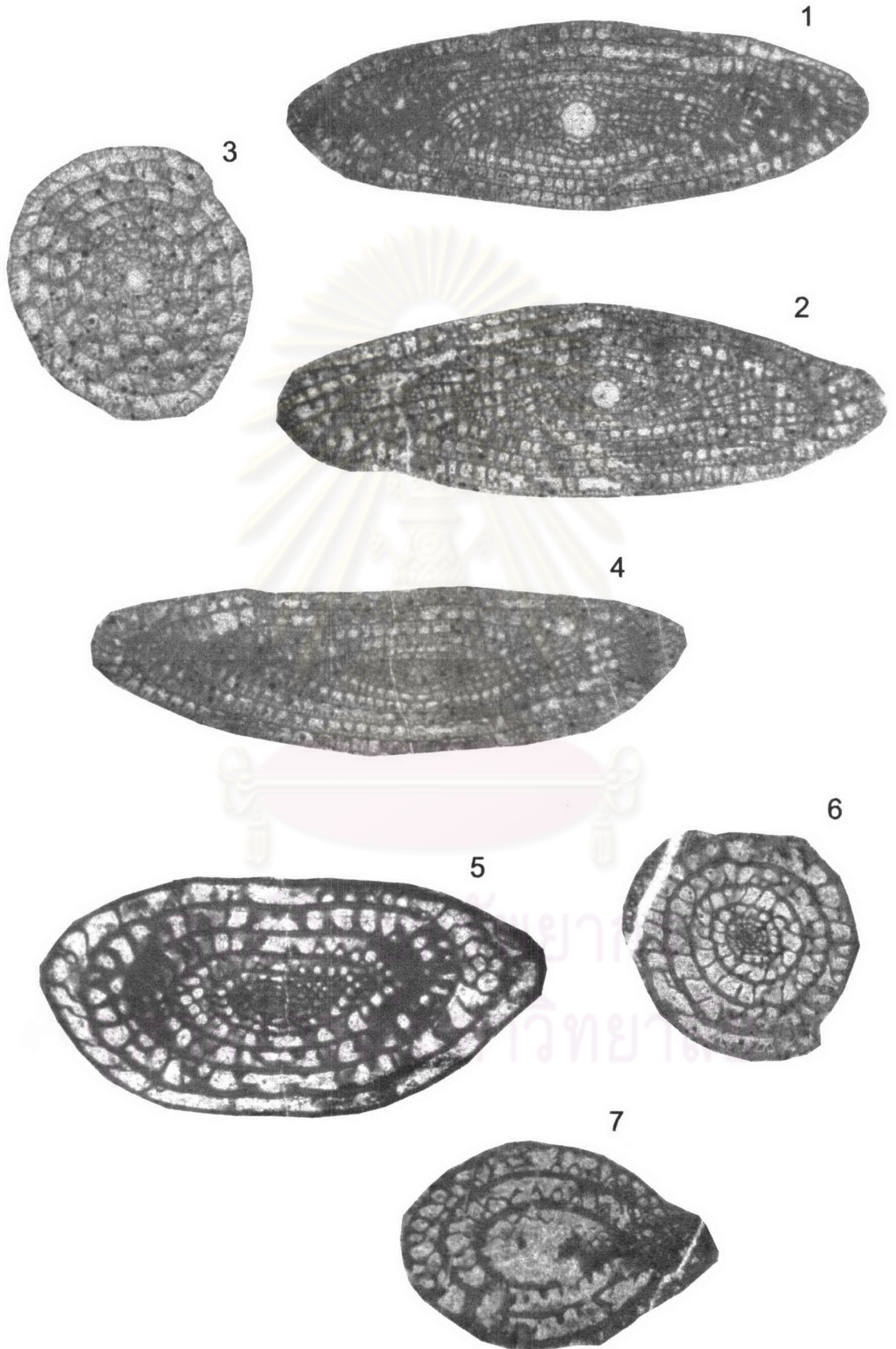
Figs. 5-7 *Chusenella* sp.page 89

- 5 and 7. Oblique sections (X 15), Sample 6-27-4F(B44) and 12-6-2F(D35).
6. Sagittal section (X 15), Sample 12-6-2F(D35).



ศูนย์วิทยทรัพยากร
จุฬาลงกรณ์มหาวิทยาลัย

Plate 2



Explanation of Plates

Plate 3

Figs. 1-3 *Verbeekina* sp.page 90

1. Tangential section (X 12), Sample 6-27-4F(B44).
2. Sagittal section (X 15), Sample 11-10-1F(D22).
3. Oblique section (X 15), Sample 6-22-2F(B39).

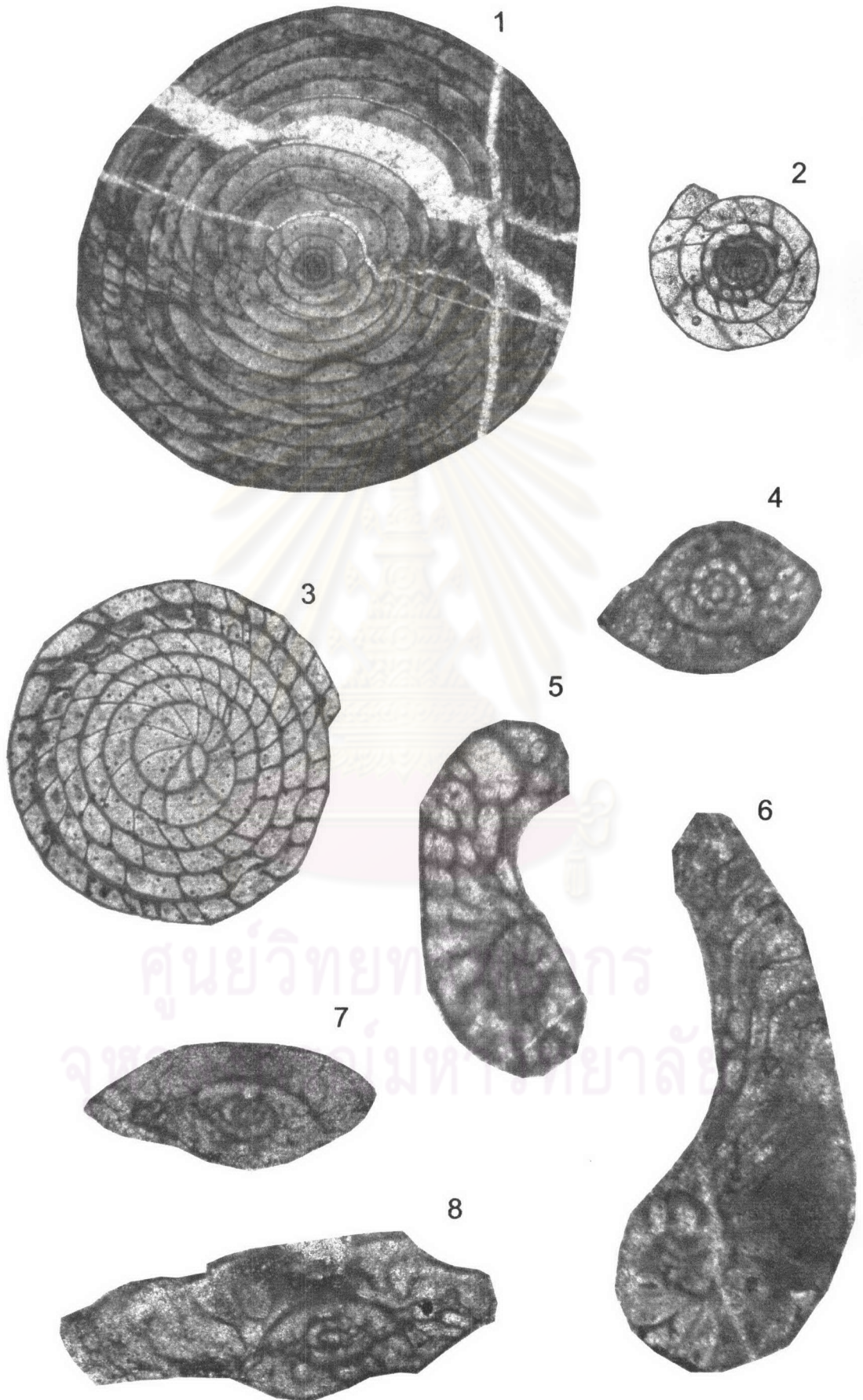
Figs. 4-7 *Codonofusiella* sp.page 90

- 4 and 7. Axial sections (X 40), Sample 5-3-1F(B4).
- 5 and 6. Sagittal sections (X 40), Sample 5-3-1F(B4).



ศูนย์วิทยทรัพยากร
จุฬาลงกรณ์มหาวิทยาลัย

Plate 3



Explanation of Plates

Plate 4

Figs. 1-3 *Sinopora* sp.page 94

1. General characteristic of marginalial increase colony.
2. Cross sections show marginalial increase, Sample 7-10-1S (E7).
3. Cross section show two layers of wall microstructure, Sample7-10-1S (E7).

Figs. 4-6 *Waagenophyllum* sp.page 93

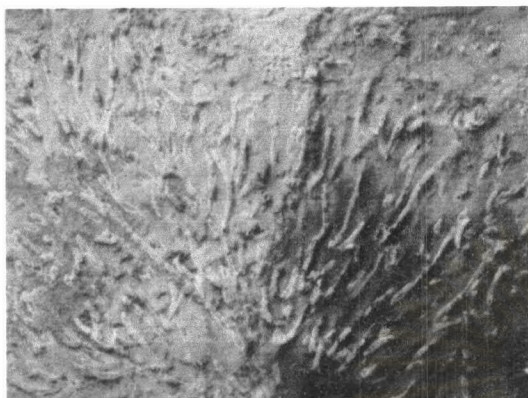
4. General characteristic of fasciculate colony.
5. Cross section, Sample 12-14-7F(D41).
6. Longitudinal section, Sample 12-14-7F(D41).



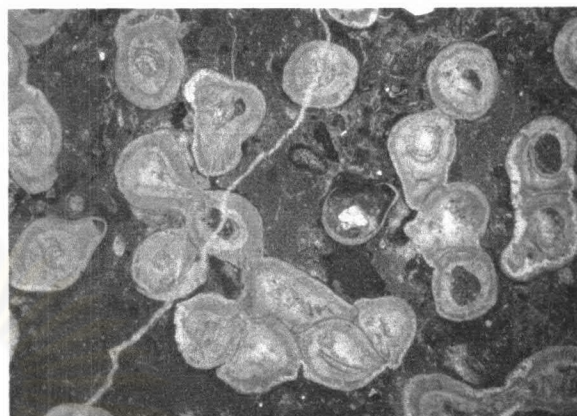
ศูนย์วิทยทรัพยากร
จุฬาลงกรณ์มหาวิทยาลัย

Plate 4

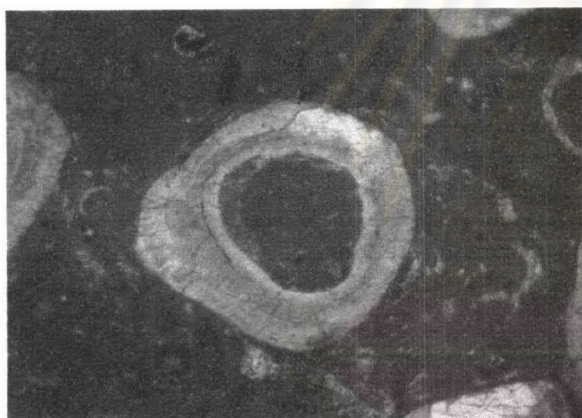
1



2



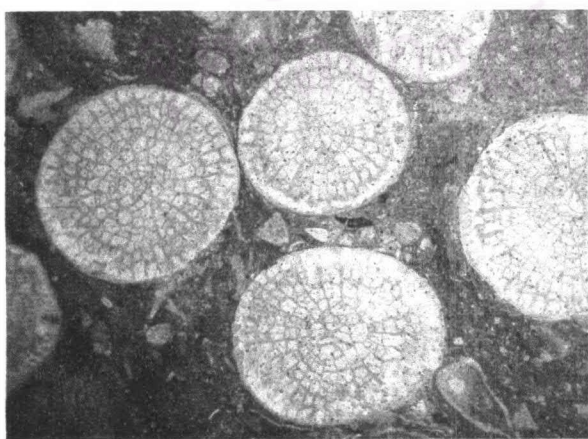
3



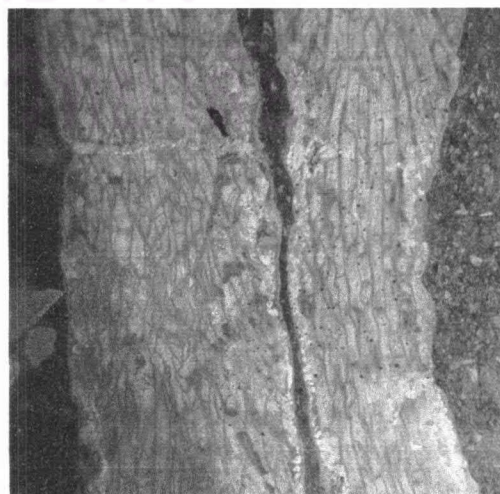
4



5



6



ศูนย์วิทยทรัพยากร

ทา

Explanation of Plates

Plate 5

Figs. 1-4 *Ipciphyllum* sp.page 93

1. Transverse section (4X) shows polygonal continuous wall, two orders of septa and loose constructed axial structure with median plates, Sample 11-12-2C.

2. Transverse section (4X) shows polygonal continuous wall, two orders of septa and loose constructed axial structure with median plates, Sample 12-1-2C.

3. Longitudinal section (4X) shows 3-4 layers of lonsdaleoid dissepiments, clinotabulae and horizontal tabulae, Sample 11-12-2C.

4. Longitudinal section (4X) shows 2-3 layers of lonsdaleoid dissepiments, clinotabulae and horizontal tabulae, Sample 12-1-2C.

Figs. 4-8 *Multimurinus* sp.page 93

5. Transverse section (4X) shows slightly discontinuous and thickened wall, three orders of septa and absence of axial structure, Sample 11-13-3C.

6. Transverse section (4X) shows discontinuous and thickened wall, three orders of septa and absence of axial structure, Sample 6-25-3C.

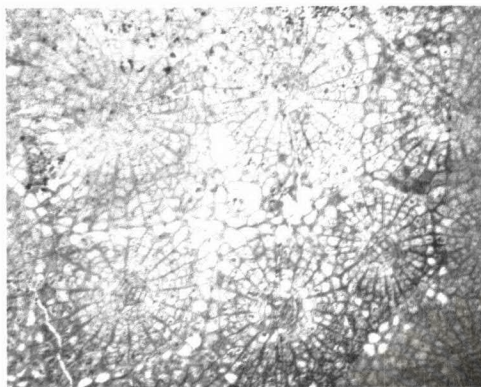
7. Longitudinal section (4X) shows 4-6 layers of lonsdaleoid dissepiments, clinotabulae and horizontal tabulae, Sample 11-13-3C.

8. Longitudinal section (4X) shows 4-5 layers of lonsdaleoid dissepiments, clinotabulae and horizontal tabulae, Sample 6-25-3C.

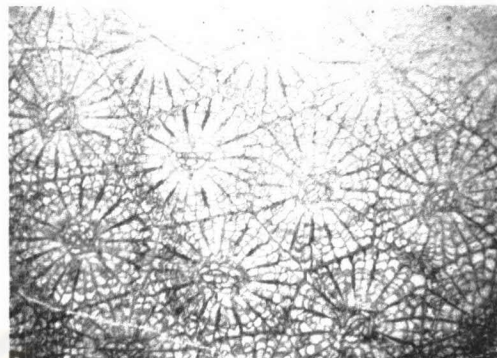
ศูนย์วิทยทรัพยากร
จุฬาลงกรณ์มหาวิทยาลัย

Plate 5

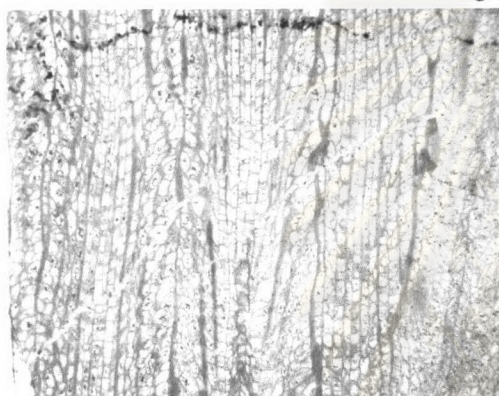
1



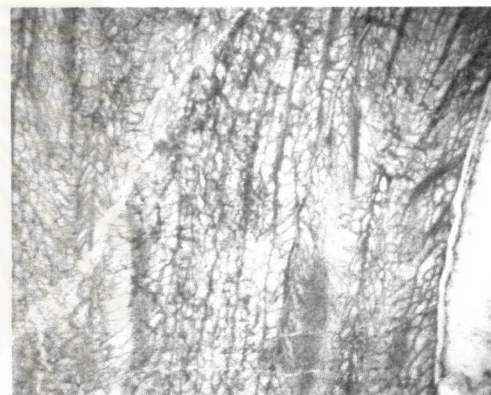
2



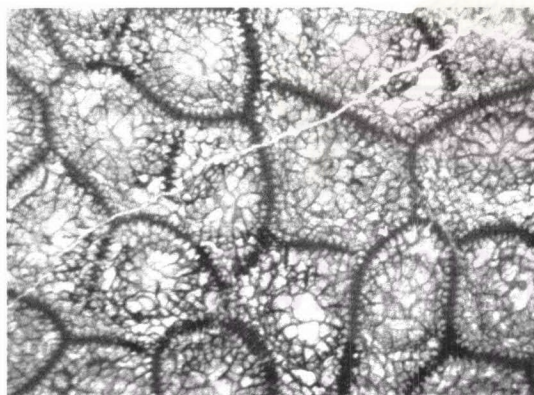
3



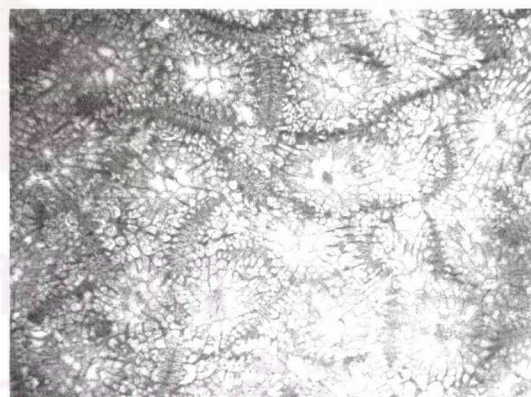
4



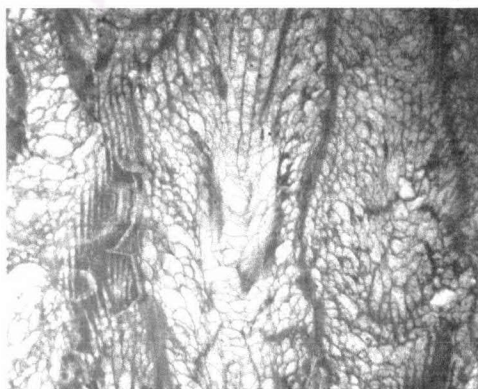
5



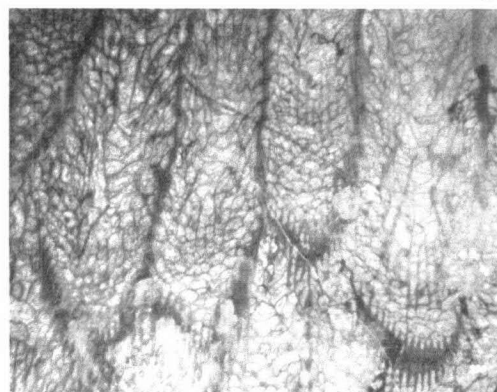
6



7



8



BIOGRAPHY

Mr. Nitipon Noipow was born on April 13, 1978, at Amphoe Ban Moh, Changwat Saraburi, central Thailand. He studied in Saraburi Wittayakom Secondary School from 1990-1996. He received the Bachelor Degree of Science in Geology from Department of Geology, Faculty of Science, Chulalongkorn University, in 2000. After graduation, he has continued his study on Master program in Geology at the Faculty of Science, Chulalongkorn University, in 2000.



ศูนย์วิทยทรัพยากร
จุฬาลงกรณ์มหาวิทยาลัย