

REFERENCES

- Aekplakorn, W., et al. (2003). The prevalence and management of diabetes in Thai adults. *Diabetes Care*, 26(10): 2758-2763.
- American Diabetes Association. (1999). Clinical practice recommendations 1999. *Diabetes Care*, 22(Supplement 1): S1-S114.
- American Diabetes Association. (2003). Standard of medical care for patients with diabetes mellitus. *Diabetes Care*, 26(Supplement 1): S33-S50.
- American Diabetes Association. (2004). Standard of medical care in diabetes. *Diabetes Care*, 27(Supplement 1): S15-S35.
- Ansari, et al. (2003). Outcomes of an intervention to improve hospital antibiotic prescribing: interrupted time series with segmented regression analysis. *Journal of Antimicrobial Chemotherapy* 52: 842-848.
- Babbie, E. (2001). *The Practice of Social Research*. Ninth edition. Belmont: Wadsworth/Thomson Learning.
- Brook, R.H., McGlynn, E.A., and Shekelle, P.G. (2000). Defining and measuring quality of care: a perspective from US researchers. *International Journal for Quality in Health Care* 12(4): 281-295.
- Bryant, J. and Prohmmo, A. (2005). Payment mechanisms and prescriptions in four Thai hospitals. *Health Policy* 73: 160-171.
- Campbell, S.M., Roland, M.O., and Buetow, S.A. (2000). Defining quality of care. *Social Science & Medicine*, 51: 1611-1625.
- Chaix-Couturier, C., et al. (2000). Effects of financial incentives on medical practice: results from a systematic review of the literature and methodological issues. *International Journal for Quality in Health Care*, 12(2): 133-142.
- Chansung, K., et al. (2003). Antidiabetic prescribing for diabetic mellitus: A case study of medical services of the national universal health care coverage program. *Journal of Health Science*, 12: 530-540.
- Clancy, C.M. and Hillner, B.E. (1989). Physicians as gatekeepers: The impact of financial incentives. *Archieve of Internal Medicine*, 149: 917-920.
- Cook, T.D. and Campbell, D.T. (1979). *Quasi-Experimentation: Design & analysis issues for field settings*. U.S.A.: Houghton Mifflin Company.
- DeLurgio, S. (1998). *Forecasting Principles and Applications*. International Editions. Singapore: The McGraw-Hill Book.
- Donabedian, A. (1988). The quality of care: How can it be assessed? *Journal of American Medical Association*, 260(12): 1743-1748.
- Endocrine Society of Thailand. (2000). *Diabetic Care Guidelines 2000*. (n.p.)
- Endocrine Society of Thailand. (2003). *Textbook of Diabetes Mellitus 2003*. (n.p.)
- Hutchinson, J.M. and Foley, R.N. (1999). Method of physician remuneration and rates of antibiotic prescription. *Canadian Medical Association Journal*, 160: 1013-1017.
- Khunti, K. (1999). Use of multiple methods to determine factors affecting quality of care of patient with diabetes. *Family Practice*, 16(5): 489-493.
- Jongudomsuk, P. and Tangcharoensathien, V, eds. (2004). *From Policy to Implementation: Historical events during 2001-2004 of universal coverage in Thailand*. First printing. Bangkok: S.R.C. Envelope.
- Limwattananon, C., Limwattananon, S., and Pannarunothai, S. (2004). Accessibility to inhaled corticosteroids among adults with chronic asthma: an impact of the

- universal health care coverage policy [Abstracts]. *Second International Conference on Improving Use of Medicines (ICIUM): From Vision to Action*, Chiang Mai, Thailand: March 30-April 2, 2004.
- Limwattananon, S., Limwattananon, C., and Pannarunothai, S. (2004). Rapid penetration of COX2 inhibitors in the non-steroidal antiinflammatory drug market: an implication for hospital cost containment policies [Abstracts]. *Second International Conference on Improving Use of Medicines (ICIUM): From Vision to Action*, Chiang Mai, Thailand: March 30-April 2, 2004.
- Limwattananon, S., Limwattananon, C., and Pannarunothai, S. (2003). Use of hospital electronic database for drug utilization analysis: A tool for an evaluation of universal health care coverage policy. *Journal of Health Science*, 12: 169-184.
- Lurie N., Christian, J., Finch, M., and Moscovice I. (1994). The effects of capitation on health and functional status of the Medicaid elderly. *Annals of Internal Medicine*, 120: 506-511.
- Marra, F., et al. (2005). Effect of formulary policy decisions on antimicrobial drug utilization in British Columbia. *Journal of Antimicrobial Chemotherapy*, 55: 95-101.
- McDowall, D., et al. (1980). *Interrupted Time Series Analysis-Series/Number 07-021*, sixth-printing, 1988. *Sage University Paper Series*. Beverly Hills: SAGE Publication, Inc.
- Mills, A., Bennett, S., Siriwanarangsun, P., and Tangcharoensathien, V. (2000). The response of providers to capitation payment: a case-study from Thailand. *Health Policy*, 51: 163-180.
- Ministry of Public Health. (2001). *Operation Guidelines for Universal Health Insurance Development in the Transition Period in the Summary of Task Force for Universal Health Insurance Development, May, 2001*.
- Mol, P.G.M., et al. (2005). Improving compliance with hospital antibiotic guidelines: a time-series intervention analysis. *Journal of Antimicrobial Chemotherapy*, 55: 550-557.
- National Health Security Office. (2006). *Report of registration requests (e-Register): February 2006*. Available from: <http://report.nhso.go.th/NumberCardHospProvinceV2Servlet>
- Norman, C. and Weber A. (1994). Chapter 8: Provider payment mechanisms, *Social Health Insurance*, 59-78. Geneva: WHO/ILO.
- Pannarunothai, S. (2002). Medical welfare scheme: financing and targeting the poor in Pramualratana P. and Wibulpolprasert, S. (eds) *Health Insurance Systems in Thailand*. Nonthaburi: Health System Research Institute (HSRI).
- Penchansky, R. and Thomas, J.W. (1981). The concept of access: definition and relationship to consumer satisfaction. *Medical Care*, 19(2):127-140.
- Pérez, A., et al. (2003). An interrupted time series analysis of parenteral antibiotic use in Colombia. *Journal of Clinical Epidemiology*, 56: 1013-1020.
- Pitaknetinan, K., et. al. (1999). Profit, payment and pharmaceutical practices: perspectives from hospitals in Bangkok. *Health Policy*, 46: 179-194.
- Ratanawijitrasin, S. (2005). *Health Insurance Systems: An in depth guide*. Bangkok: Chulalongkorn University Press.
- Rubin, H.R., Pronovost, P., and Diette, G.B. (2001). The advantages and disadvantages of process-based measures of health care quality. *International Journal of Quality in Health Care*, 2001: 13(6): 469-474.

- Rubin, R.J., Dietrich, K.A., and Hawk, A.D. (1998). Clinical and economic impact of implementing a comprehensive diabetes management program in managed care. *Journal of Clinical Endocrinology and Metabolism*, 83: 2635-2642.
- Schneeweiss, S., et al. (2002). Impact of reference-based pricing for angiotensin-converting enzyme inhibitors on drug utilization. *Canadian Medical Association Journal*, Mar 19: 737-745.
- Schneeweiss, S., Maclure, M., et al. (2002). Quasi-experimental longitudinal designs to evaluate drug benefit policy changes with low policy compliance. *Journal of Clinical Epidemiology*, 55: 833-841.
- Schneeweiss, S., et al. (2001). On the evaluation of drug benefits policy changes with longitudinal claims data: the policy maker's versus the clinician's perspective. *Health Policy*, 55: 97-109.
- Secretariat Office, Ministry of Public Health. (2001). *Manual of Universal Health Insurance Operation for staffs*.
- Shih, Y.T. (1999). Effect of insurance on prescription drug use by ESRD beneficiaries. *Health Care Financing Review*, 20(3): 39-54.
- Shireman, T.I., et al. (2002). Medicaid managed care prescription use and cost saving. *Journal of Pharmaceutical Association*, 42: 587-593.
- SPSS Inc. (1999). *SPSS Trends 10.0*. Illinois: SPSS Inc.
- Srisuphan, V., Limwattananon, C., Limwattananon, S., Luangruangrong, P., and Tangcharoensathien, V. (2004). Trends in hospital drug utilization after an implementation of the National Lists of Essential Drug Policy. *Journal of Health Science*, 13: 37-46.
- Srisuphan, V., Sripairoj, A., and Tangcharoensathien, V. (2004). Hospital response to an implementation of the National Lists of Essential Drugs. *Journal of Health Science*, 13: 47-55.
- Srithamrongsawat, S. (2002). The health card scheme: a subsidized voluntary health insurance scheme in Pramualratana P. and Wibulpolprasert, S. (eds) *Health Insurance Systems in Thailand*. Nonthaburi: Health System Research Institute (HSRI).
- Sub-Committee of the Medical Council of Thailand. (2002). *A summary of overall study and impacts of the 30 Baht Policy for every Disease on medical ethics*. (n.p.)
- Taesombut, S. (2006). *Quantitative Forecasting*. Bangkok: Kasatesart University Press.
- Tangcharoensathien, v., Srithamrongsawat, S., and Pitayarangsarit, S. (2002). Overview of health insurance systems in Pramualratana P. and Wibulpolprasert, S. (eds) *Health Insurance Systems in Thailand*. Nonthaburi: Health System Research Institute (HSRI).
- Tantivess, S. (2002). Generic substitution in public and private hospital in Thailand. *Journal of Health Science*, 11: 32-43.
- Wagner, A.K., et al. (2002). Segmented regression analysis of interrupted time series studies in medication use research. *Journal of Clinical Pharmacy and Therapeutics*, 27: 299-309.
- WHO Study Group. (1993). Evaluation of recent changes in the financing of health services. *Report of a WHO Study Group*. Geneva: WHO.
- Yesalis III, et al. (1984). Capitation payment for pharmacy services – I. Impact on drug use and pharmacist dispensing behavior. *Medical Care*, 22: 737-745.



APPENDICES

ศูนย์วิทยทรัพยากร
จุฬาลงกรณ์มหาวิทยาลัย

Appendix A An example series of each dependent and independent variables for segmented regression analysis calculation

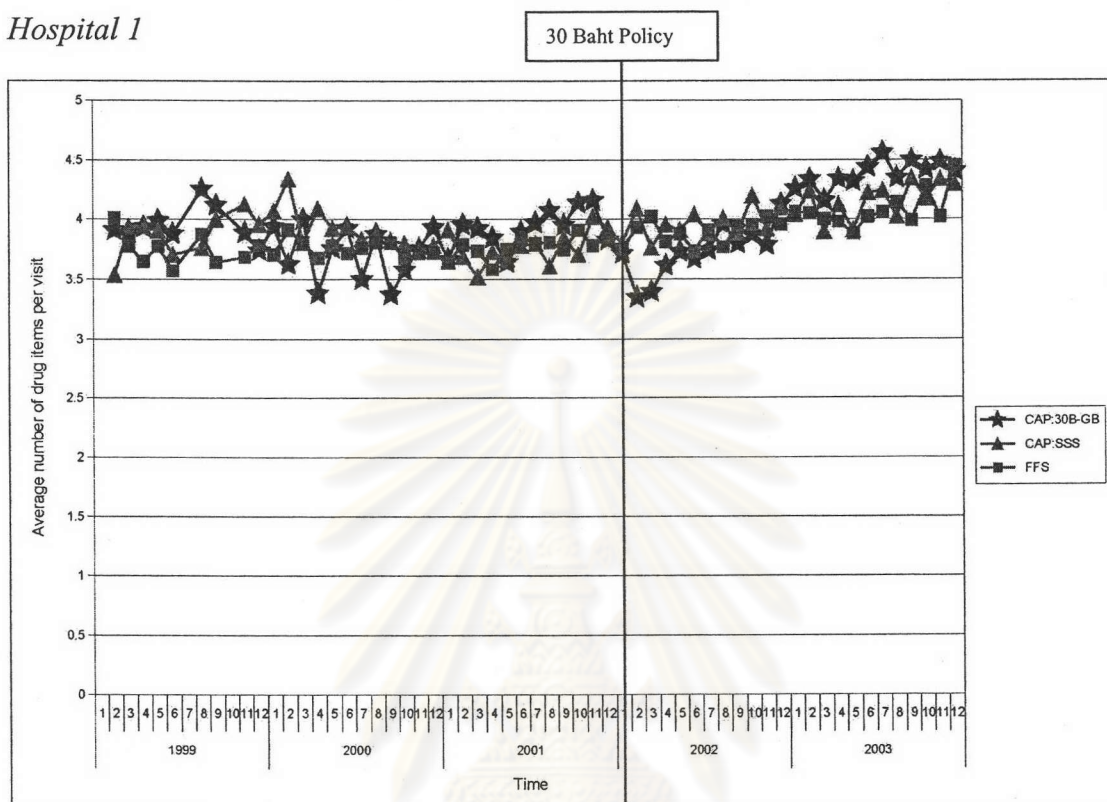
Data point	Average charge per visit	Baseline trend (BT)	Level change after the policy (LCAP)	Trend change after the policy (TCAP)
1	486.47	1	0	0
2	457.30	2	0	0
3	534.72	3	0	0
4	564.56	4	0	0
5	509.97	5	0	0
6	478.54	6	0	0
7	516.74	7	0	0
8	628.31	8	0	0
9	528.48	9	0	0
10	509.45	10	0	0
11	602.79	11	0	0
12	513.41	12	0	0
13	592.12	13	0	0
14	544.68	14	0	0
15	495.85	15	0	0
16	569.06	16	0	0
17	565.09	17	0	0
18	560.89	18	0	0
19	588.48	19	0	0
20	537.73	20	0	0
21	530.02	21	0	0
22	562.14	22	0	0
23	572.04	23	0	0
24	747.68	24	0	0
25	904.98	25	0	0
26	768.12	26	0	0
27	751.52	27	0	0
28	629.51	28	0	0
29	642.26	29	0	0
30	752.52	30	0	0
31	805.54	31	0	0
32	624.10	32	0	0
33	768.39	33	0	0
34	634.08	34	1	1
35	800.13	35	1	2
36	626.61	36	1	3
37	782.78	37	1	4
38	744.63	38	1	5
39	784.42	39	1	6
40	709.33	40	1	7
41	755.03	41	1	8
42	838.83	42	1	9
43	799.84	43	1	10
44	941.38	44	1	11
45	785.16	45	1	12
46	799.14	46	1	13
47	884.75	47	1	14
48	693.82	48	1	15
49	704.33	49	1	16
50	782.63	50	1	17
51	742.00	51	1	18
52	840.14	52	1	19
53	788.91	53	1	20
54	710.38	54	1	21
55	773.73	55	1	22
56	895.66	56	1	23
57	971.46	57	1	24
58	695.27	58	1	25
59	843.78	59	1	26
60	1108.44	60	1	27

30 Baht Policy implementation

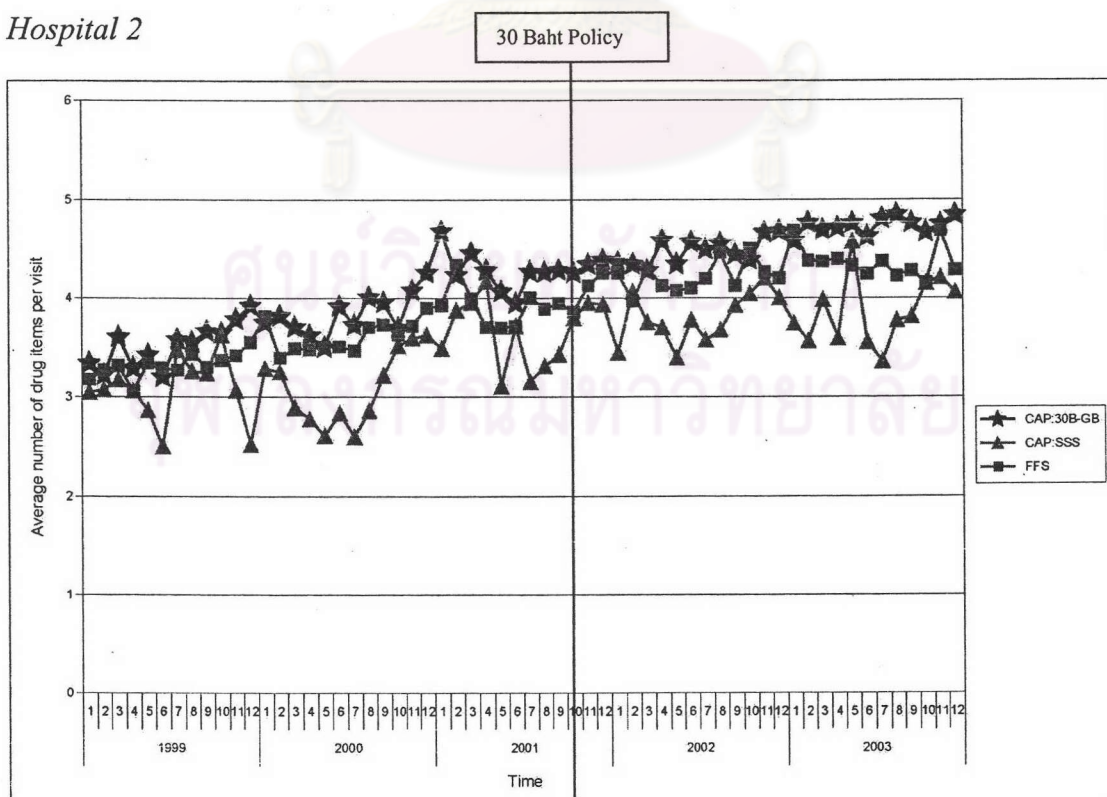
Appendix B Graphs of average number of drug items prescribed per visit and average number of visits per patient per month

Average number of drug items prescribed per visit

Hospital 1

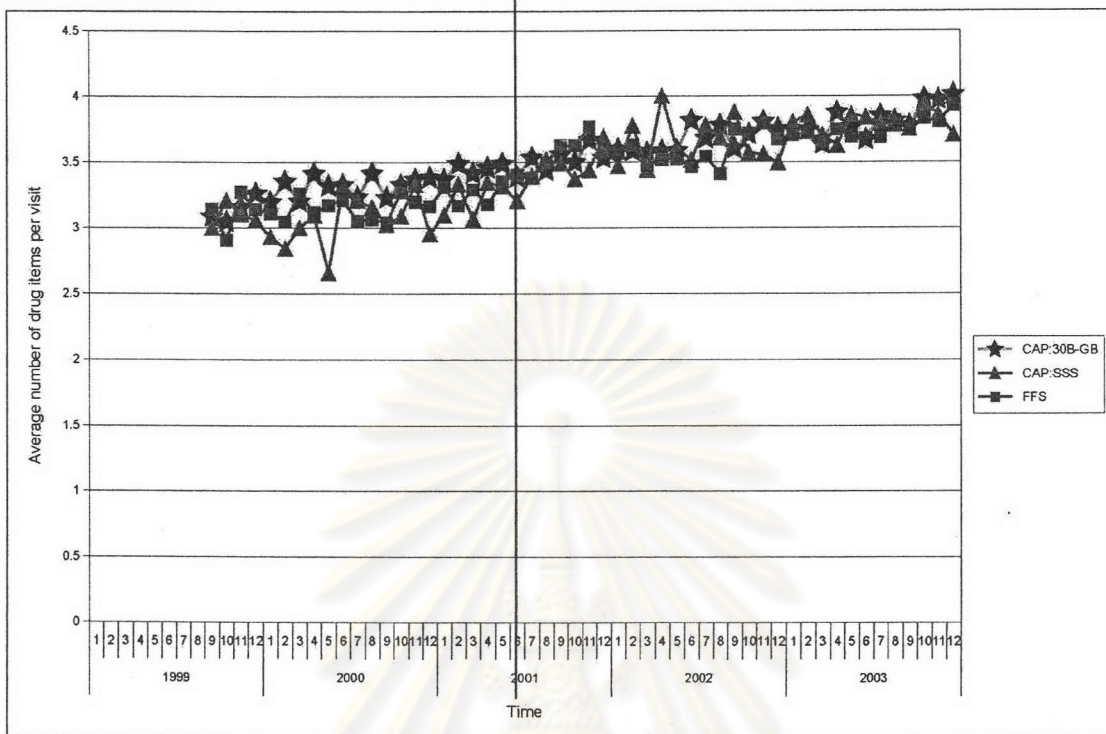


Hospital 2



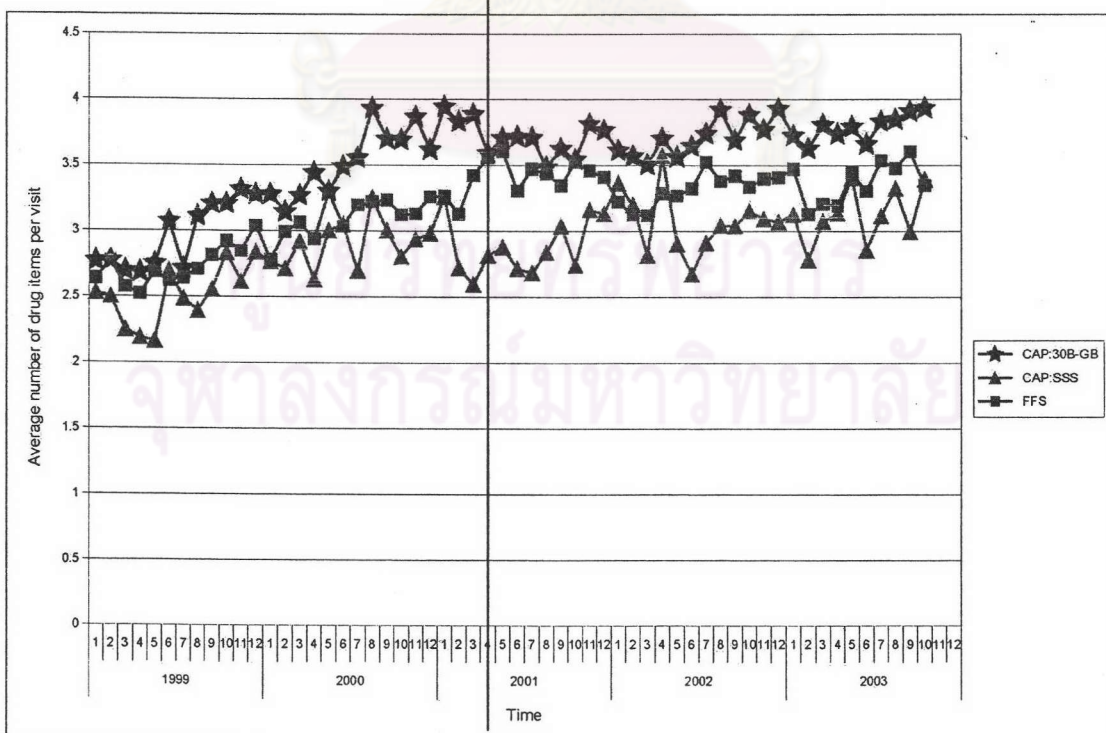
Hospital 3

30 Baht Policy



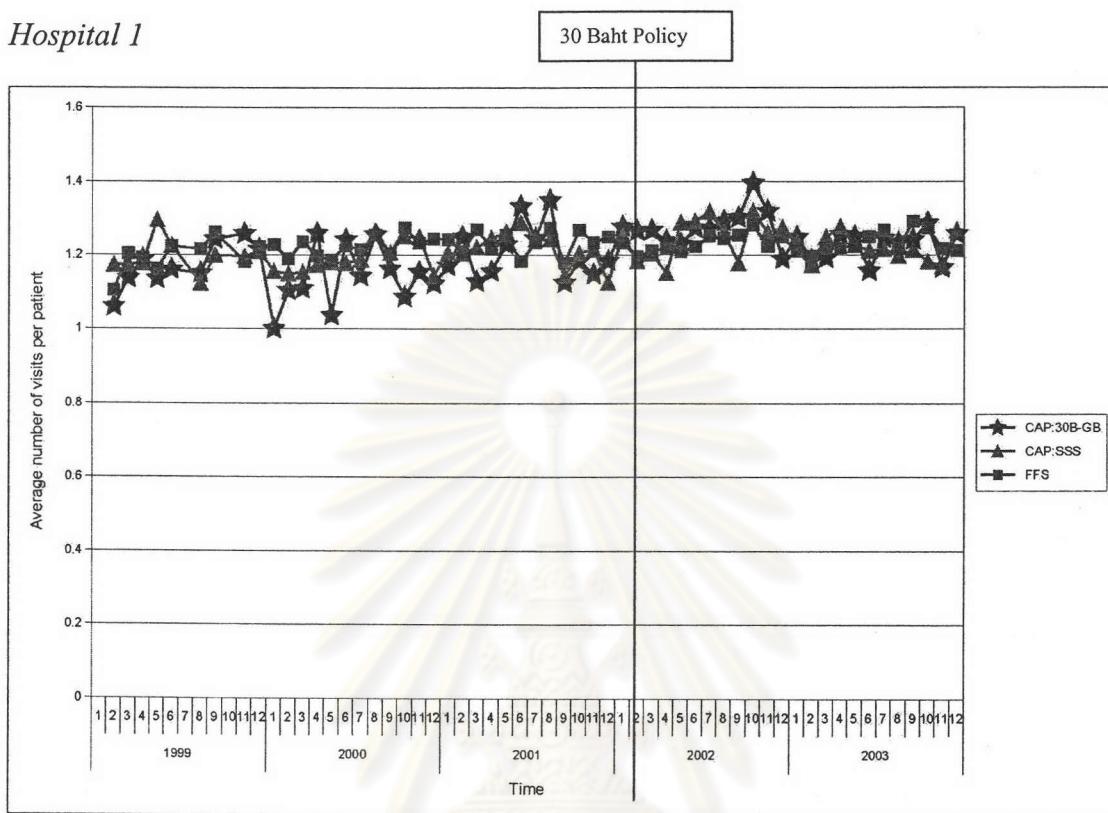
Hospital 4

30 Baht Policy

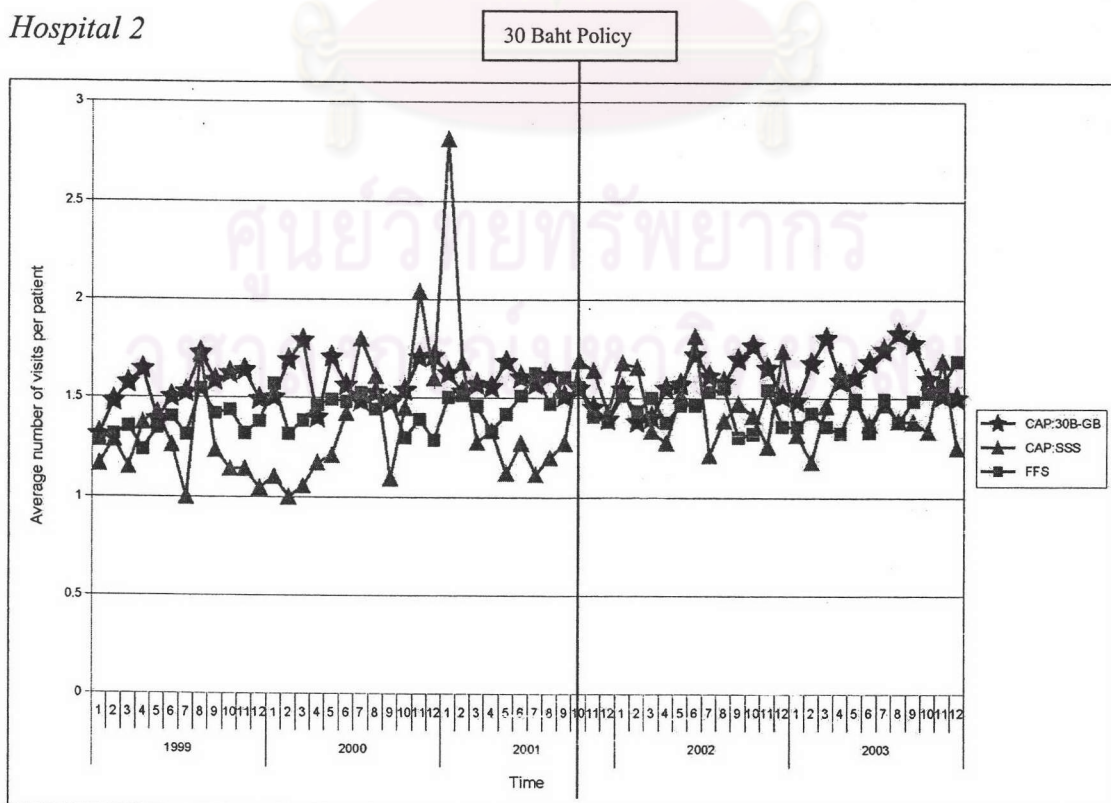


Average number of visits per patient per month

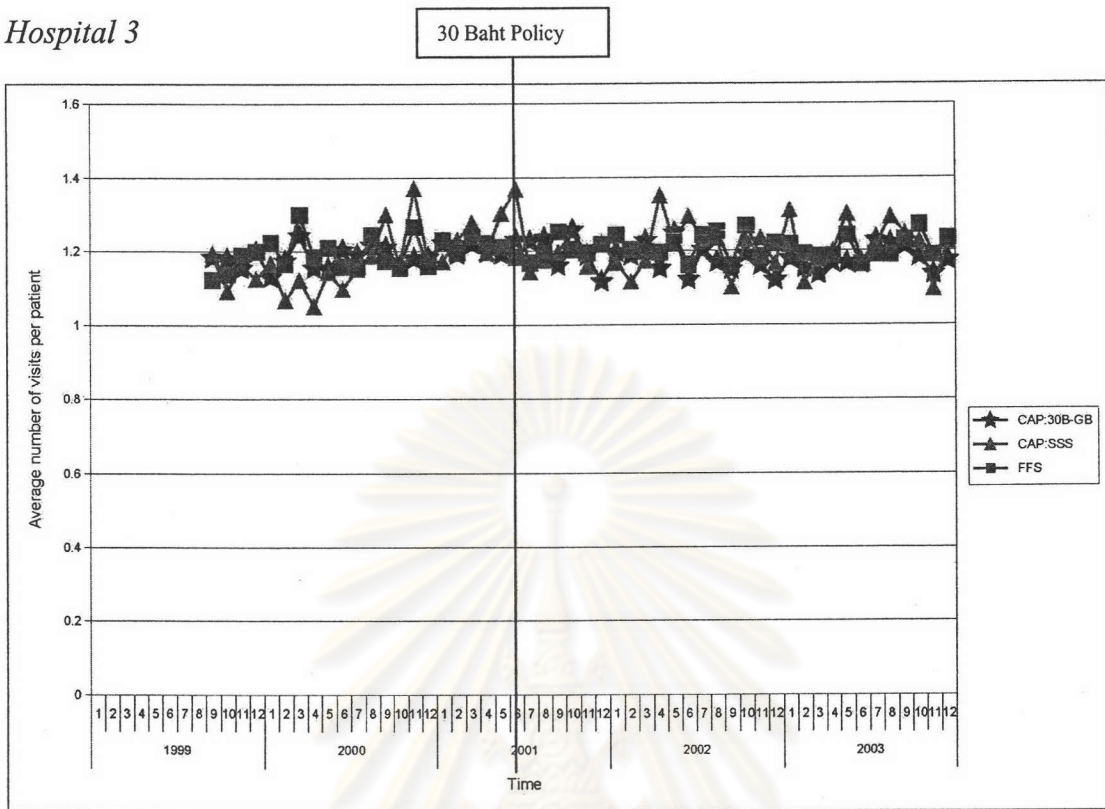
Hospital 1



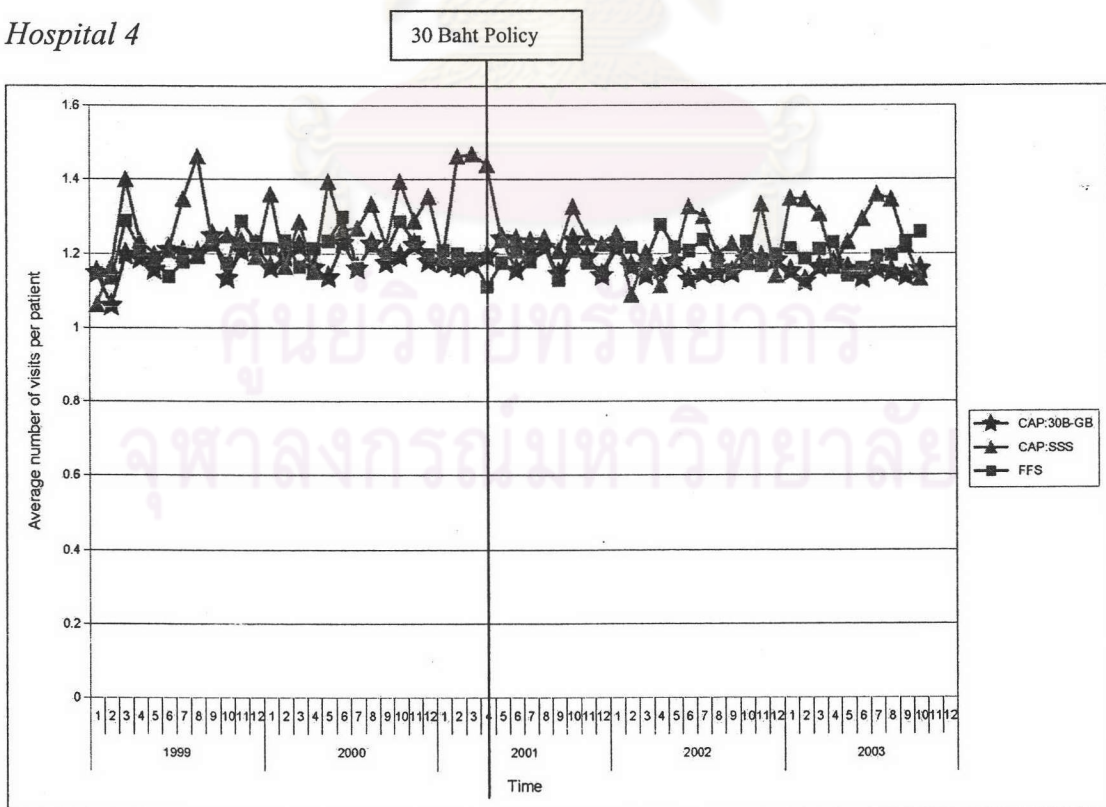
Hospital 2



Hospital 3



Hospital 4



BIOGRAPHY

Name: Miss Inthira Kanchanaphibool

Date of Birth: June 30, 1966

Education:

- Bachelor of Science in Pharmaceutical Sciences,
Chulalongkorn University, 1989
- Master of Science in Pharmacy (Hospital and Clinical Pharmacy),
Chulalongkorn University, 1997

Work Experience:

- 1993-present Faculty of Pharmacy, Silpakorn University,
Nakhon-Pathom
- 1991-1993 Medical Devices Division,
Food and Drug Administration Agency, Bangkok
- 1989-1991 Srimahaphoth Community Hospital, Prachinburi

ศูนย์วิทยทรัพยากร
จุฬาลงกรณ์มหาวิทยาลัย