

- Binns, R.A., 1969, High-pressure megacrysts in basanitic lavas near Armidale, New South Wales. *Am. Jour. Sci.*, Schaire vol., 267-A, 33-49.
- Binns, R.A., Duggan, M.B., and Wilkinson, J.F.G., 1970, High pressure megacrysts in alkaline lavas from northeastern New South Wales, with chemical analyses by Kalocsai, G.I.Z.. *Am. Jour. Sci.*, 269, 132-168.
- Brown, G.M., 1968, Mineralogy of basaltic rocks. In *Basalts*, Volume 1, H.H. Hess and A. Poldervaart (Editors), 103-162. Intersciences, John Wiley and Sons, New York, 482 p.
- Bultitude, R.J., and Green, D.H., 1971, Experimental study of crystal-liquid relationships at high pressure in olivine nephelinite and basanite compositions. *J. Petrol.*, 12, 121-147.
- Bunjitradulya, S. and Prapaitrakul, N., 1973, Geological report of Amphoe Bo-Phloi and its vicinities (1:50,000), *Geol. Surv. Rept.* 414, (in Thai).
- Bunopas, S. and Bunjitradulya, S., 1975, Geology of Amphoe Bo-Phloi north Kanchanaburi with special notes on the "Kanchanaburi Series". *J. Geol. Soc. Thailand*, vol. 1, 51-67.

- Carmichael, I.S.E., Turner, F.J., and Verhoogen J., 1974, *Igneous Petrology*. McGraw-Hill Book Company, New York., 739 p.
- Carter, J.L., 1970, Mineralogy and chemistry of the earth's upper mantle based on the partial fusion-partial crystallization model. *Bull. Geol. Soc. Am.* 81, 2021-2034.
- Charaljavanaphet, C., 1951. Bo-Phloi placers, Kanchanaburi. In *Geological Reconnaissance of the Mineral deposits of Thailand* by Brown, G.F. et. al., pp. 149-150. U.S. Geol. Surv. Bull. 984.
- Clarks, D.B., 1970. Tertiary basalts of Baffin Bay : Possible primary magma from the mantle. *Contr. Mineral. and Petro.* 25, 203-224.
- Cohen, L.H., Ito, K., and Kennedy, G.C., 1967, Melting and phase relations in an anhydrous basalt to 40 kilobars. *Am. Jour. Sci.* 265, 475-518.
- Coombs, D.S., and Wilkinson, J.F.G., 1969, Lineages and fractionation trends in undersaturated volcanic rocks from the East Otago volcanic province (New Zealand) and related rocks. *J. Petrol.* 10, 440-501.
- Danckwerth, P.A. and Newston, R.C., 1978. Experimental determination of the spinel peridotite to garnet peridotite reaction in the system $MgO-Al_2O_3-SiO_2$ in the range 900'-1000'c and Al_2O_3 isopleths of enstatite in the spinel field. *Contr. Mineral. and Petrof.* 66, 169-201.

- Frey, F.A., Green, D. H., and Roy S.D., 1978, Integrated models of basalt petrogenesis : a study of quartz tholeiites to olivine melilitites from south Eastern Australia utilizing geochemical and experimental petrological data. *J. Petrol.*, 19, 464-513.
- Gast, P.W., 1960, Limitations on the composition of the upper mantle, *J. Geophys. Res.*, 65, 1287-1297.
- , 1968, Trace element fractionation and the origin of tholeiitic and alkaline magma types. *Geochim. Cosmochim. Acta*, 32, 1057-1086.
- Green, D.H., 1968, Origin of basaltic magmas. In *Basalts*. H.H. Hess and A. Poldervaart (Editors) volume 2, pp.835-862. Interscience Publishers, John Wiley and Sons.
- , 1969, The origin of basaltic and nephelinitic magmas in the earths mantle. *Tectonophysics*, 7, 409-422.
- , 1970 (a) A review of experimental evidence on the origin of basaltic and nephelinitic magmas. *Phys. Earth planet. Int.*
- , 1970 (b) The origin of basaltic and nephelinitic magmas. *Trans. Leicester int. phil. Soc.*, 44, 26-54.
- , 1973 (a) Conditions of melting of basanite magma from garnet peridotite Earth and Planet, *Sci. Let.* 17, 456-465.
- , 1971, Composition of basaltic magmas as indicators of conditions of origin : application to oceanic volcanism. *Phil. Trans. Roy. Soc. Lond.*, A. 268, 707-725.

- Green, D.H., 1973 (b) Experimental melting studies on a model upper mantle composition at high pressure under water-saturated and water-undersaturated conditions. *Earth planet. Sci. Lett.*, 19, 37-53
- Green, D.H. and Ringwood A.E., 1967, The genesis of basaltic magma *Contr. Mineral. and Petrol.* 15, 103-190.
- Green, D.H. and Hibberson, W.O., 1970, Experimental duplication of conditions of precipitation of high-pressure phenocrysts in a basaltic magma. *Phys. Earth Planet. Int.* 3, 247-254.
- Grove, T.L., Walker, D., Longhi, J., Stolper, E., and Hays, S.F., 1973, Petrology of rock 1002 and origin of picritic basalts at Oceanus Procellarum. *Proc. Fourth Lunar Sci. Conf., Geochim. cosmochim. Acta. Suppl.* 4, 1995-1011.
- Gutmann, J.T., 1977, Textures and genesis of phenocrysts and megacrysts basaltic lavas from the Pinacate volcanic field. *Am. Jour. Sci.* 277, 833-861.
- Hess, H.H. 1938, A primary peridotite magma. *Am. Jour. Sci*, 5th ser. 35, 321-344.
- Irvine, T.N. and Baragar, W.R.A. 1971., A guide to the chemical classification of the common volcanic rocks. *Canadian J. of Sci.*, 523-548.
- Irving, A.J. 1974 (a) Pyroxene-rich ultramafic xenoliths in the Newer Basalts of Victoria, Australia. *N. Jb. Miner. Abh.* 120, 147-167.

- Irving, A.J.: 1974 (b) Megacrysts from the Newer and other basaltic rocks of south-eastern Australia. Bull. Geol. Soc. Am. 85, 1503-1514.
- Irving, A.J. and Green, D.H. 1976, Geochemistry and petrogenesis of the Newer Basalts of Victoria and South Australia. J. Geol. Soc. Australia, 23, 45-66.
- Ito, K. and Kennedy G.C., 1967, Melting and phase relations in a natural peridotite to 40 kilobars. Am. Jour. Sci. 265, 519-538.
- Jackson, E.D., and Wright, T.L., 1970, Xenoliths in the Honolulu volcanic series, Hawaii. J. Petrol. 11, 405-430.
- Kaewbaidhoun, S. and Potisat, S. 1974, Sapphire deposit at Bo-Phloi, Kanchanaburi. In Sapphire, pp. 43-47. Dept. Min. Resources, Bangkok, Thailand. (published in Thai).
- Kuno, H., 1959, Origin of Cenozoic petrographic provinces of Japan and surrounding areas. Bull. Volcanol., 20, 37-76.
- , 1960, High-alumina basalt. J. Petrol. 1, 121-145
- , 1964, Aluminian augite and bronzite in alkali basalt from Takashima, North Kyushu, Japan. Advance Front in Geol. and Geophy., 205-220.
- , 1968, Differentiation of basalt magmas. In Basalts, Volume 2. H.H. Hess and A. Poldervaart (Editors). pp. 623-688. Intersciences, John Wiley and Sons, New York.
- , 1969, (a) Mafic and ultramafic inclusions in basaltic rocks and the nature of the upper mantle. In The earth's crust and upper mantle, P.J. Hart (Editor) pp.507-513. Amer. Geophys. Union, Washington, D.C.

- Kuno, H., 1969 (b), Mafic and ultramafic nodules in basaltic rocks of Hawaii, Geol. Soc. Am. Mem. 115, 189-234.
- , 1969 (c), Plateau basalts. In the earth's crust and upper mantle. P.J. Hart (Editor) pp. 495-501. Amer. Geophys. Union, Washington, D.C..
- , 1969 (d), Origin of basaltic magmas and of ultramafic rocks, summary and conclusion. Tectonophysics 7, 521-523.
- Kuno, H., and Aoki, K., 1970, Chemistry of ultramafic nodules and their bearing on the origin of basaltic magma. Phys. Earth Planet. Int. 3, 273-301.
- Kushiro, I., 1968, Compositions of magmas formed by partial zone melting of the earth's upper mantle. J. Geophys. Res., 73, 619-634.
- , 1969, The system forsterite-diopside-silica with or without water at high pressures. Am. Jour. Sci., Schairer Vol., 267 A, 269-294.
- , 1972, Effect of water on the composition of magmas formed at high pressures. J. Petrol. 13, 311-334.
- , 1973, Origin of some magmas in oceanic and circum-oceanic regions. Tectonophysics, 17, 211-222.
- , 1979, Changes with pressure of degree of partial melting and K_2O content of liquids in the system Mg_2SiO_4 - $KAlSiO_4$ - SiO_2 . Carnegie Inst. Wash. Yearbook, 79, 267-271.

- Kushiro, I., and Kuno, H., 1963, Origin of primary basalt magmas and classification of basaltic rocks. *J. Petrol.*, 4, 75-89.
- Kushiro, I., Syono, Y., and Akimoto, S., 1968, Melting of peridotite at high pressures and high water pressures. *J. Geophys. Res.*, 73, 6023-6029.
- Le Maitre, R.W., 1962, Petrology of volcanic rocks, Gough Island, South Atlantic. *Bull. Geol. Soc. Am.*, 73, 1309-1340.
- , 1976, The chemical variability of some common igneous rocks. *J. Petrol.* 17, 589-637.
- Lindsley, D.H., 1966, Melting relations of $KAlSi_3O_8$: effect of pressures up to 40 kilobars. *Am. Mineralogist*, 51, 1793-1799.
- Maaløe, S., 1973, Temperature and pressure relations of ascending primary magmas. *J. Geophys. Res.*, 78, 6877-6886.
- Macdonald, G.A., 1960, Dissimilarity of continental and oceanic rock types. *J. Petrol.*, 172-177.
- , 1968, Composition and origin of Hawaiian lavas. *Geol. Soc. Am. Mem.* 116, 477-522.
- Macdonald, G.A., and Katsura, T., 1964, Chemical composition of Hawaiian lavas. *J. Petro.* 5, 82-133.
- MacGregor, I.D., 1965, Stability fields of spinel and garnet peridotite in the synthetic system $MgO-CaO-Al_2O_3-SiO_2$. *Carnegie Inst. Wash. Yearbook*, 64, 126-134.
- Maury, R.C. Didier, J. and Lameyre, J., 1978, Comparative magma/xenolith relationships in some volcanic and plutonic rocks from the French Massif Central. *Contr. Mineral and Petrol.* 66, 401-408.

- Mercier, J.C.C., and Nicols, A., 1975, Textures and fabric of upper mantle peridotites as illustrated by xenoliths from basalts. *J. Petrol.* 16, 454-487.
- Miyashiro, A., 1978, Nature of alkalic volcanic rock series. *Contr. Mineral. and Petrol.* 66, 91-104.
- Modreski, P.J., and Boettcher, A.L., 1973, Phase relationships of phlogopite in the system $K_2O-MgO-CaO-Al_2O_3-SiO_2-H_2O$ to 35 kilobars : a better model for micas in the interior of the earth. *Am. Jour. Sci.*, 273, 385-414.
- Muir, I.D., and Tilley, C.E., 1961, Mugearite and their place in alkali igneous rock series. *J. Geol.* 69, 186-203.
- Mysen, B.O., and Boettcher, A.L., 1975, Melting of a hydrous mantle : 1, Phase relations of natural peridotite at high pressures and temperatures with controlled activities of carbon dioxide and hydrogen. *J. Petrol.* 16, 520-548.
- Nicholls, G.D., 1967, Geochemical studies in the ocean as evidence for the composition of the mantle. In Runcorn, S.K.(ed.), *Mantle of the Earth and Terrestrial Planets*. Interscience, 285-304.
- Nielson Pike, J.E., and Schwarzman, E.C., 1977, Classification of textures in ultramafic xenoliths. *J. Geol.* 85, 49-61.
- O'Hara, M.J., 1968, The bearing of phase equilibria studies in synthetic and natural systems on the origin and evolution of basic and ultrabasic rocks. *Earth Sci. Rev.*, 4, 69-133.
- Oxburgh, E.R., 1964, Petrological evidence for the presence of amphibole in the upper mantle and its petrogenetic and geophysical implications. *Geol. Mag.*, 101, 1-19.

- Pearce, J.A. 1976, Statistical analysis of major element patterns in basalts. *J. Petrol.* 17, 15-43.
- Pearce, J.A., and Cann, J.R., 1973, Tectonic setting of basic volcanic rocks determined using trace element analyses. *Earth and Planet. Sci. Let.* 19, 290-300.
- Pitayaphumichan, Phra, and Phianlohapitaya, Khun, 1934, Investigation report on gem deposits at Khao Wong, Khao Kaew, Khao Yao, Kanchanaburi province, Department of Mineral Resources, 4 p.
- Presnall, D.C., Dixon, S.A., Dixon, J.R., O'Donnell, T.H., Brenner N.L., Schrock, R.L. and Dycus, D.W., 1978, Liquidus phase relations on the join diopside-forsterite-anorthite from 1 atm to 20 kbar : their bearing on the generation and crystallization of basaltic magma. *Contr. Mineral. and Petrol.* 66, 203-220.
- Ringwood, A.E., 1966, The chemical composition and origin of the Earth. In Hurley, P.M. (ed.), *Advances in Earth Science*, M.I.T. Press, 287-356.
- Roeder, P.L., and Emslie, R.F., 1970, Olivine liquid equilibrium. *Contr. Mineral and Petrol.*, 29, 275-289.
- Ross, C.S., Foster, M.D., and Myers, A.T., 1954, Origin of dunites and of olivine-rich inclusions in basaltic rocks. *Am. Mineralogist* 39, 693-737.
- Saggerson, E.P. and Williams, L.A.J. 1964, Ngurumanite from southern Kenya and its bearing on the origin of rocks in the northern Tanganyika alkaline district. *J. Petrol.* 5, 40-81.

- Schwarzer, R.R. and Rogers, J.J.W., 1974, A world - wide comparison of alkali olivine basalts and their differentiation trends. Earth and Planet. Sci. Let. 23, 286-296.
- Shapiro, L. 1975, Rapid analysis of silicate, carbonate, and phosphate rocks-revised edition. Geol. Surv. Bull. 1401. US government Printing Office, Washington.
- Sheppard, R.A., 1962, Iddingsitization and recurrent crystallization of olivine in basalts from the Simcoe Mountains, Washington. Am. Jour. Sci. 260, 67-74.
- Shimizu, N., 1971, Potassium contents of clinopyroxenes at high pressures and temperatures, Earth Planet. Sci. Let., 11, 374-380.
- Sirinawin, T., 1981, Geochemistry and genetic significance of gem-bearing basalt in Chanthaburi-Trat area, Unpub., Independent study at Chiangmai University, Thailand, 87 p.
- Stuckless, J.S., and Irving, A.J., 1976, Strontium isotope geochemistry of megacrysts and host basalts from southeastern Australia. Geochim. cosmochim. Acta 40, 209-213.
- Stueber, A.M., 1969, Abundances of K,Rb, Sr and Sr isotopes in ultramafic rocks and minerals from western North Carolina. Geochim. cosmochim. Acta, 33, 543-553.
- Takahashi, E., 1979, Melting relations of an alkali olivine basalt at 30 kbar, and their bearing on the origin of alkali basalt magma. Carnegie Inst. Wash, Yearbook 79, 271-276.

Yoder, H.S., Jr. 1973, Melilite stability and paragenesis

Fortschr. Mineral., 50, 140-173.

,1974, Garnet peridotite as a parental material for
basaltic liquids. Carnegie Inst. Wash. Year Book 73, 263-266.

, 1976, Generation of basaltic Magma. National
Academy of Sciences, Washington, 265 p.

Yoder, H.S., and Tilley, C.E., 1962, Origin of basalt magmas : an
experimental study of natural and synthetic rock systems. J.
Petrol. 3, 342-352.

APPENDIX A

Original chemical data on major oxides for the Bc Phloi Basalt

	T79-1-2	T79-1-4	T79-1-6	T79-2-1	T79-2-3
SiO ₂	45.68	44.89	44.48	47.77	48.91
TiO ₂	1.79	1.79	2.23	1.97	1.76
Al ₂ O ₃	14.81	14.85	14.95	15.95	15.50
Fe ₂ O ₃	3.70	4.19	3.92	4.31	4.18
FeO	5.06	4.78	6.05	5.26	4.60
MnO	0.18	0.16	0.18	0.17	0.15
MgO	7.49	7.81	7.34	5.98	5.31
CaO	8.64	9.00	8.86	7.81	7.98
Na ₂ O	3.73	3.73	3.72	4.60	4.81
K ₂ O	3.15	3.11	2.71	1.97	1.76
P ₂ O ₅	0.80	0.74	0.91	0.84	0.72
Cr ₂ O ₃	0.02	0.02	0.02	0.02	0.02

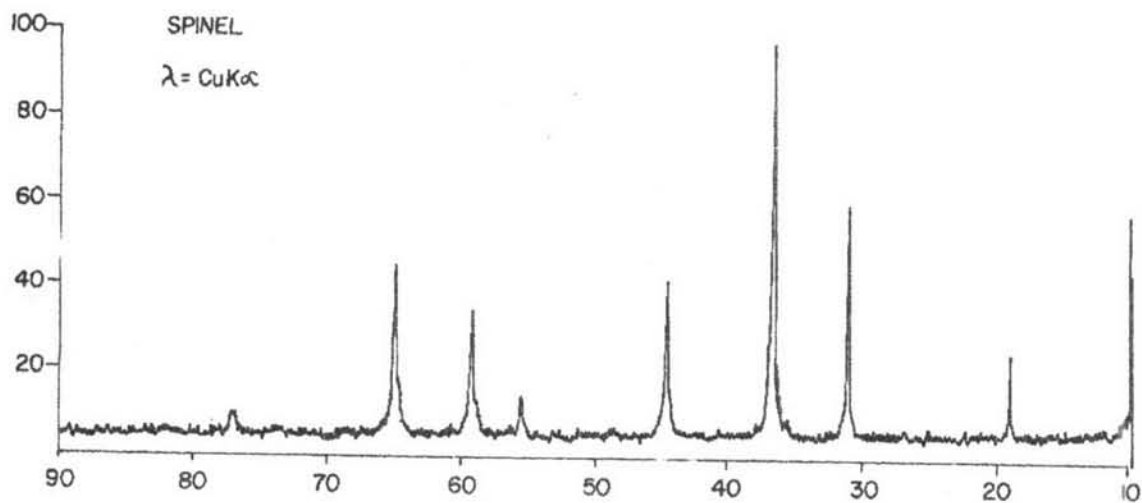
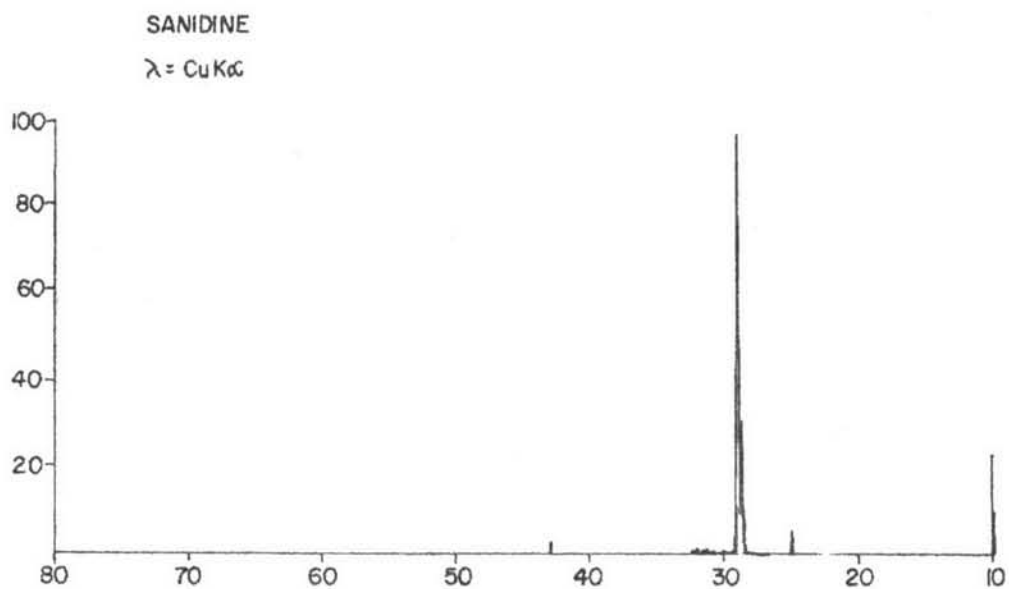
	T79-2-4	T79-3-1	T79-3-2	T79-3-3	T79-4-1
SiO ₂	45.21	48.25	48.88	46.40	46.23
TiO ₂	2.17	1.87	1.91	1.93	2.24
Al ₂ O ₃	14.07	14.03	14.03	15.50	15.50
Fe ₂ O ₃	4.07	3.72	2.99	3.22	3.59
FeO	6.10	5.68	6.11	5.90	5.68
MnO	0.18	0.18	0.17	0.17	0.16
MgO	7.05	7.78	7.98	7.40	7.37
CaO	8.50	7.71	7.88	9.49	8.63
Na ₂ O	4.53	4.18	4.41	4.23	3.70
K ₂ O	2.64	1.87	1.91	2.24	1.91
P ₂ O ₅	0.88	0.94	0.93	0.74	0.72
Cr ₂ O ₃	0.03	0.04	0.04	0.04	0.04

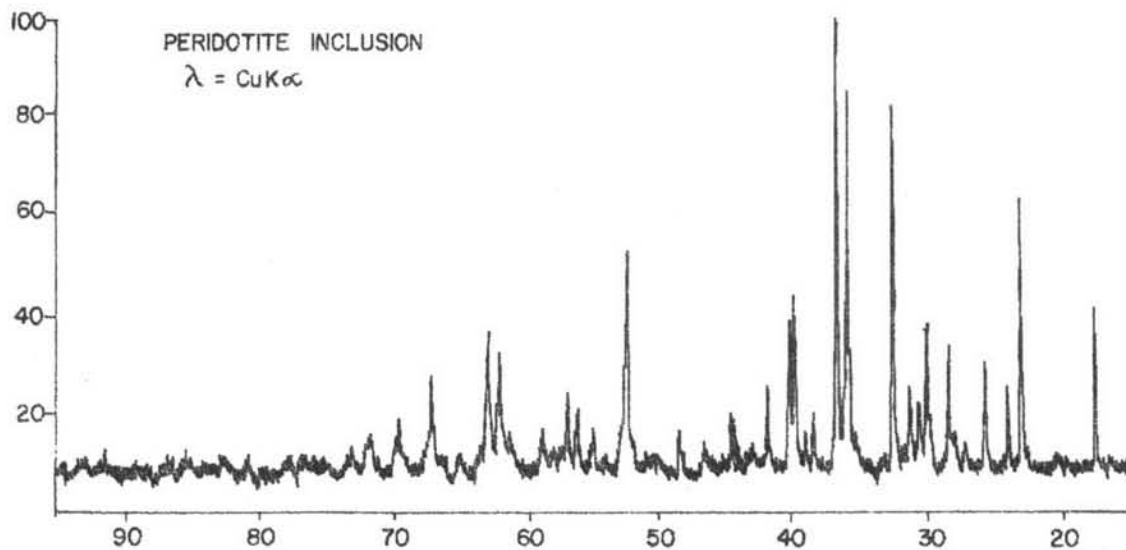
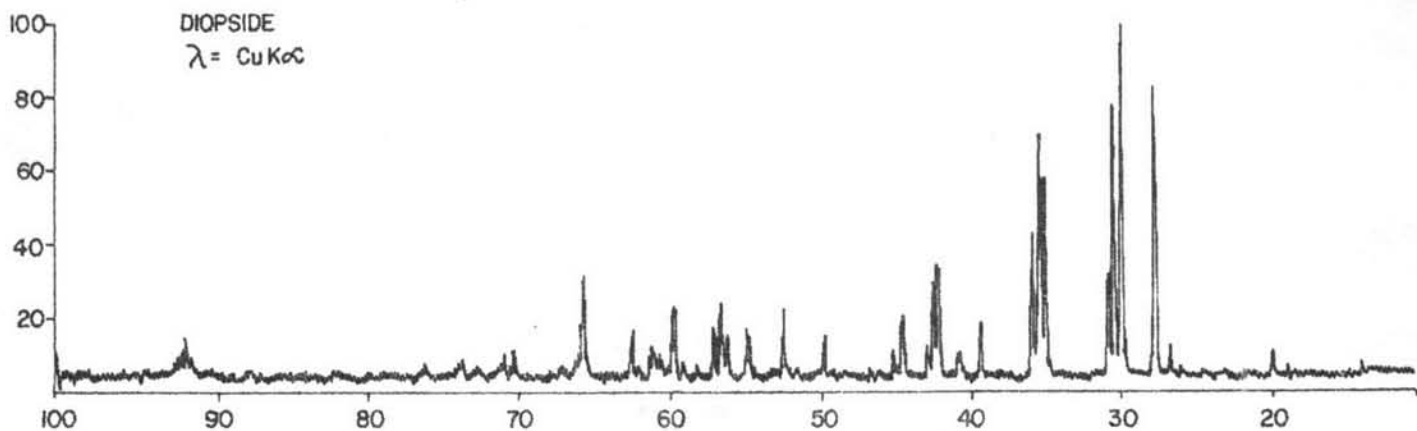
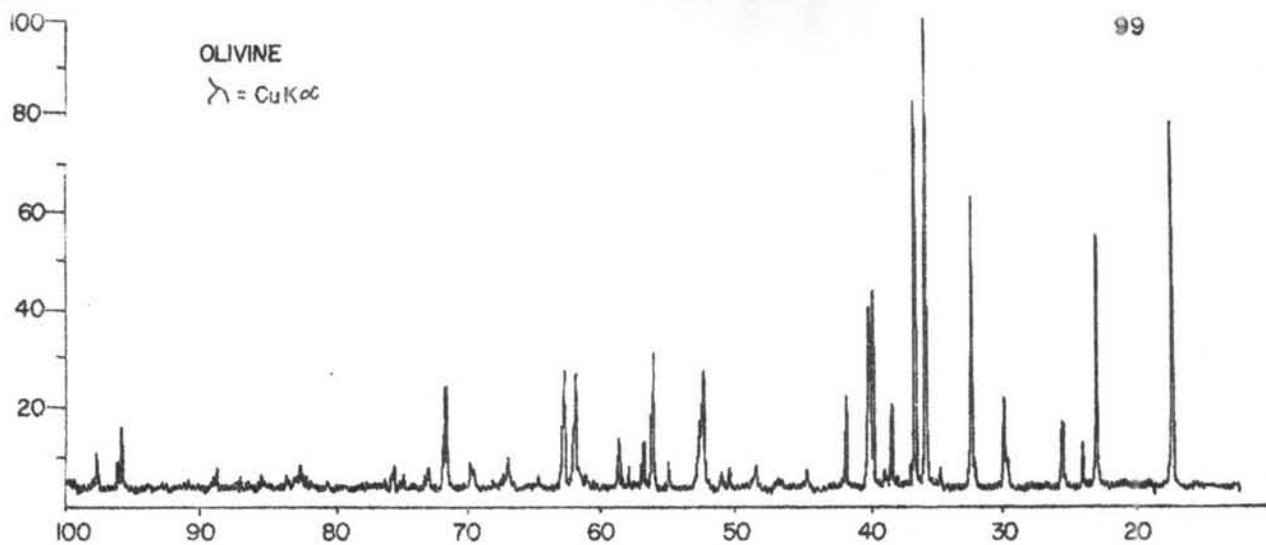
(Continued)

	T79-4-2	T79-4-3	T79-5-1	T79-5-4	T79-6-1
SiO ₂	45.90	46.03	47.08	45.49	48.63
TiO ₂	1.93	2.15	1.81	1.92	1.96
Al ₂ O ₃	14.86	15.45	15.60	15.26	14.77
Fe ₂ O ₃	3.73	3.60	4.03	4.52	4.07
FeO	5.56	6.24	5.28	5.21	5.06
MnO	0.18	0.18	0.17	0.18	0.17
MgO	6.93	7.08	7.26	6.86	6.50
CaO	9.67	7.58	7.48	9.15	8.32
Na ₂ O	3.78	3.70	3.97	3.44	4.17
K ₂ O	2.47	1.89	2.89	2.00	2.23
P ₂ O ₅	0.82	0.94	0.83	0.84	0.76
Cr ₂ O ₃	0.02	0.07	0.02	0.02	0.02

	T79-6-3	T79-6-6	T79-7-3	T79-7-4	T79-7-7
SiO ₂	46.06	46.84	45.40	46.88	46.73
TiO ₂	1.98	2.24	1.87	2.20	2.19
Al ₂ O ₃	15.73	15.78	15.74	15.80	16.08
Fe ₂ O ₃	4.37	4.69	3.45	3.37	3.56
FeO	5.10	4.98	6.03	5.63	5.78
MnO	0.15	0.17	0.17	0.17	0.19
MgO	7.78	7.05	7.21	7.15	7.21
CaO	8.30	7.08	7.32	7.81	7.71
Na ₂ O	3.95	4.76	4.98	4.53	3.70
K ₂ O	2.53	2.02	3.17	2.16	2.27
P ₂ O ₅	0.91	0.82	0.86	0.77	0.84
Cr ₂ O ₃	0.02	0.02	0.02	0.02	0.03

X-ray diffractogram of megacrysts and peridotite inclusion from
the Bo Phloi Basalt







VITA

Mrs. Ngarmpis Angkatavanich Yaemniyom was born in Bangkok, Thailand, on September 26, 1947. She graduated from the Department of Geology, Faculty of Science, Chulalongkorn University in 1971 with a B.Sc. degree in Geology. Then she joined the Department of Mineral Resources and was firstly assigned to work on the geological photo-interpretation for the Geological Survey Division in 1973. She was assigned to work on the compilation of data on mineral resources of Thailand for the Economic Geology Division in 1974. She had published some academic papers in the Economic Geology Bulletin i.e. Tungsten, Copper, Lead-Zinc (in Thai) and also the mineral resources map of Thailand in the scale of 1:2,500,000 ; in a number of 14 sheets. She is now working for the Geochemical Exploration Section, Economic Geology Division, and also responsible for the filing of geochemical exploration and mineral resources data. She has also edited the Economic Geology Bulletin including maps for the Economic Geology Division, Department of Mineral Resources, Thailand.