

REFERENCES

1. Bolognesi, C.; Bonatti, S.; Degan, P.; Gallerani, E.; Peluso, M.; Rabboni, R.; Roggieri, P. and Abbondandolo, A. Genotoxic activity of glyphosate and its technical formulation roundup. *J. Agric. Food Chem.* (1997) 45, 1957-1962.
2. Barry, J. P.; Carton, W. J.; Pesci, K. M.; Anselmo, R. T.; Radtke, D. R and Evans, J. V. Derivatization of low molecular weight polymers for characterization by matrix-assisted laser desorption/ionization time of flight mass spectrometry. *Rapid Commun. Mass Spectrom.* (1997) 11, 437-442.
3. Yan, W.; Gardella, J. A.; Wood, Jr. and Wood, T. Quantitative analysis of technical polymer mixtures by matrix-assisted laser desorption/ionization time of flight mass spectrometry. *J. Am. Soc. Mass. Spectrom.* (2002) 13, 914-920.
4. Peungjitton, P. *Preparation of surfactant from cardanol*. Master's Thesis, Program of Petrochemistry, Faculty of Science, Chulalongkorn University, 2002.
5. Rosen, M.J., *Surfactant and Interfacial Phenomena*, 2nd ed., New York; A Wiley interscience publications, (1989), 1-5.
6. Surface tension methods, Surface Tensiometry, Inc., Oklahoma City, OK [Online]. Available from: www.tensiometry.com/SSSTMethods.htm [1999, December 7].
7. Pringnitz, B. 1998. Clearing up confusion on adjuvants and additives. Iowa State University Extension Agronomy. <http://www.weeds/iastate.edu/mgmt/atr98-2/cropoils.html>
8. DiTomaso, J.M. Barriers to foliar penetration and uptake of herbicides. *Proceedings of the California Weed Science Society* . (1999) 5, 150-155.
9. Hull, H.M., Davis, D.G. and Stolzenberg, G.E. *Action of adjuvants on plant surfaces*. In: *Adjuvants for Herbicides*, WSSA, Champaign, IL. (1982), 26-67.
10. Hess, F.D. and C.L. Foy. Interaction of surfactants with plant cuticles. *Weed Technology*. (2000) 14, 807-813.
11. Green, J.M. 2001. Herbicide adjuvants. In: UC Davis WRIC Weed Science School, September 26-28, 2001, Woodland, CA.

12. Green, J.M. Increasing efficiency with adjuvants and herbicide mixtures. *Proceedings of the First International Weed Control Congress*, Melbourne, AU. (1992), 187-192.
13. Carroll, B. 2001. Selecting the right adjuvant. Helena Chemical Company's Guide to Adjuvants .<http://www.helenachemical.com/proprietary/products/adjuvants/introduction.htm#>.
14. Kirkwood, R.C. Recent developments in our understanding of the plant cuticle as a barrier to the foliar uptake of pesticides. *Pesticide Science*. (1999) 55, 69-77.
15. Coret, J., Bambonnet, B., Brabet, F. and A. Chamel. Diffusion of three ethoxylated octylphenols across isolated plant cuticles. *Pesticide Science*. (1993) 38, 201-209.
16. BASF Corportion 2002 3000 Continental Drive-North Mount Olive, New Jersey 07828-1234-800-443-6460.
17. Sainumpueng Sinjaroen. *Determination of molecular weight distribution of polyisobutenysuccinimide-type dispersant mass spectrometry*. Master's Thesis, Program of Petrochemistry, Faculty of science, Chulalongkorn University, 2002.
18. Bruker. *User' guide to the BIFLEX MALDI-TOF mass spectrometer*. 1995.
19. De Hoffmann E., Charette J. and Stroobant V., *Mass Spectrometry:Principals and Applicatons*, Wiley, West Sussex, 1996.
20. Dass C., *Principal and Practice of Biologiactal Mass Spectrometry*, Wiley, New York, 2000.
21. Montaudo G. and Lattimer P. R., *Mass spectrometry of polymers*, CRC PRESS, 2002.
22. Crescenzi, C.; Corcia, A. D. and Samperi, R. Determination of nonionic polyethoxylate surfactants in environmental water by liquid chromatography/electrospray mass spectrometry. *Anal. Chem.* (1995) 67, 1797-1804.
23. Krogh, K. A.; Vejrup, K. V.; Mogensen, B .B. and Bent Halling-Sørensen. Liquid chromatography-mass spectrometry method to determine alcohol ethoxylates and alkylamine ethoxylates in soil interstitial water, ground water and surface water sample. *J. Chromatogr.* (2002) 957, 45-47.

24. Murgasova R. and Hercules D. Quantitative characterization of a polystyrene/poly(α -methylstyrene) blend by MALDI Mass Spectrometry and Size-exclusion chromatography. *Anal. Chem.* (2003) 75, 3744-3750.

APPENDICES

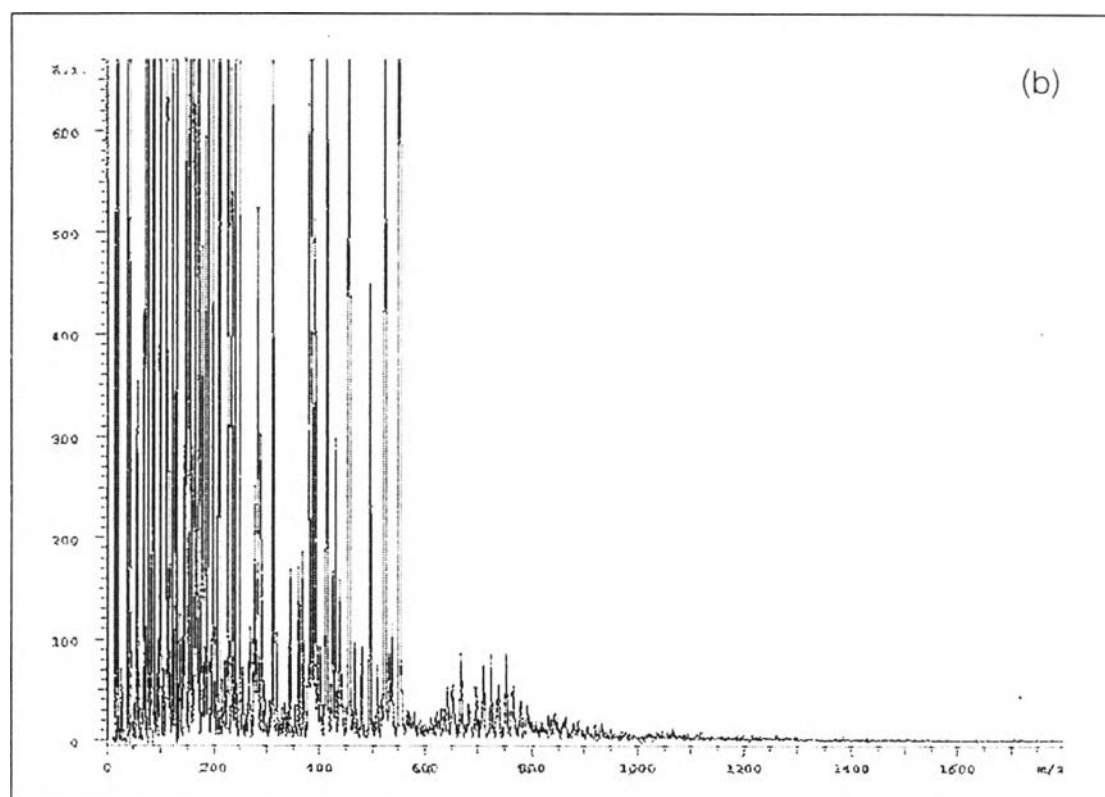
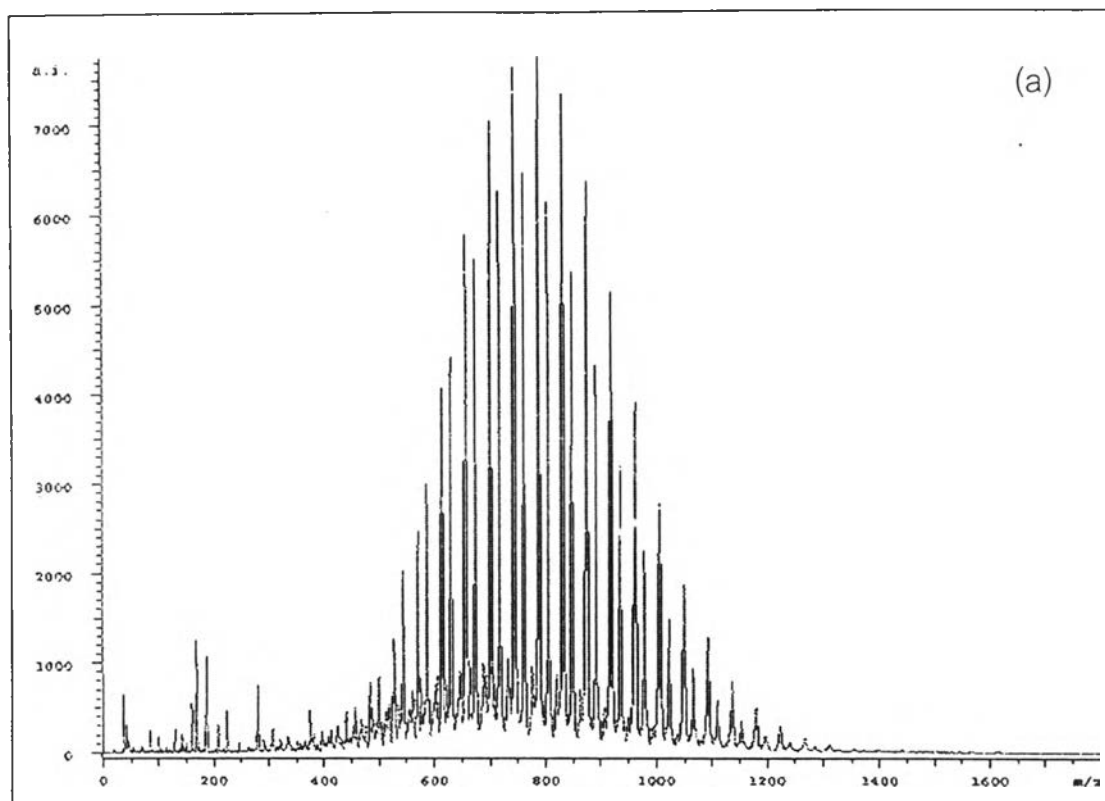


Figure A1. MALDI-MS mass spectra of alkylamine ethoxylate using a dried droplet method (a) and thin layer method (b).

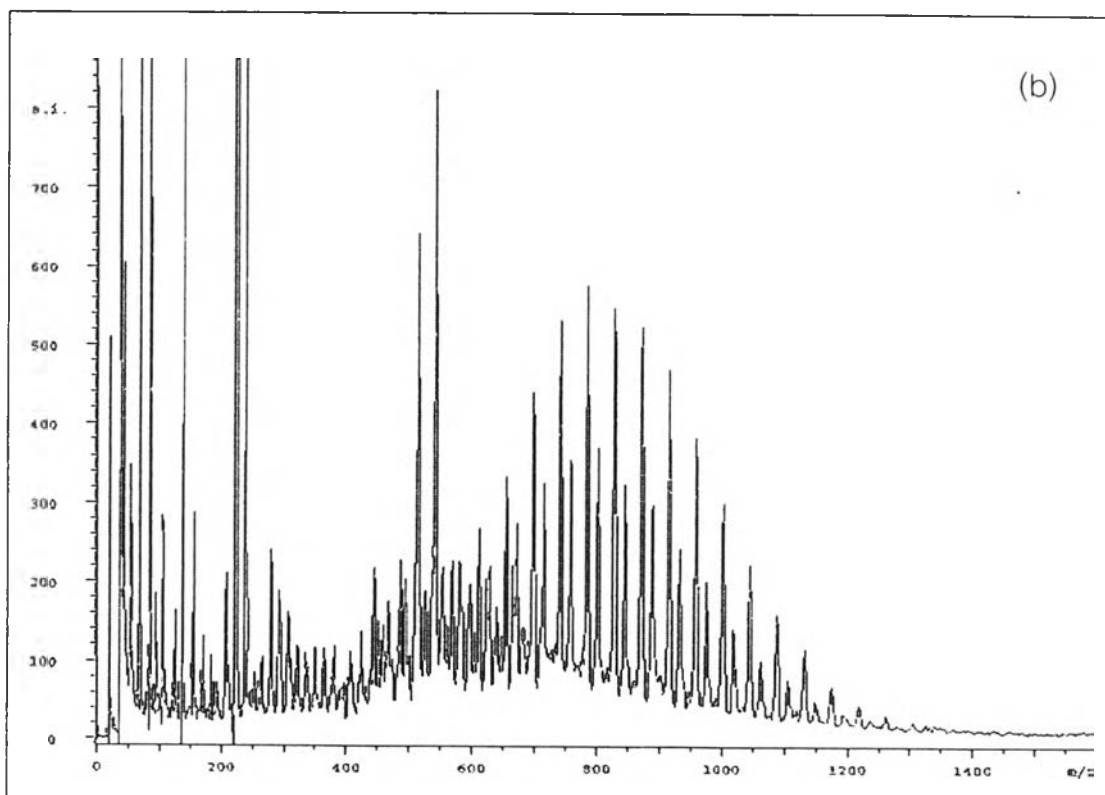
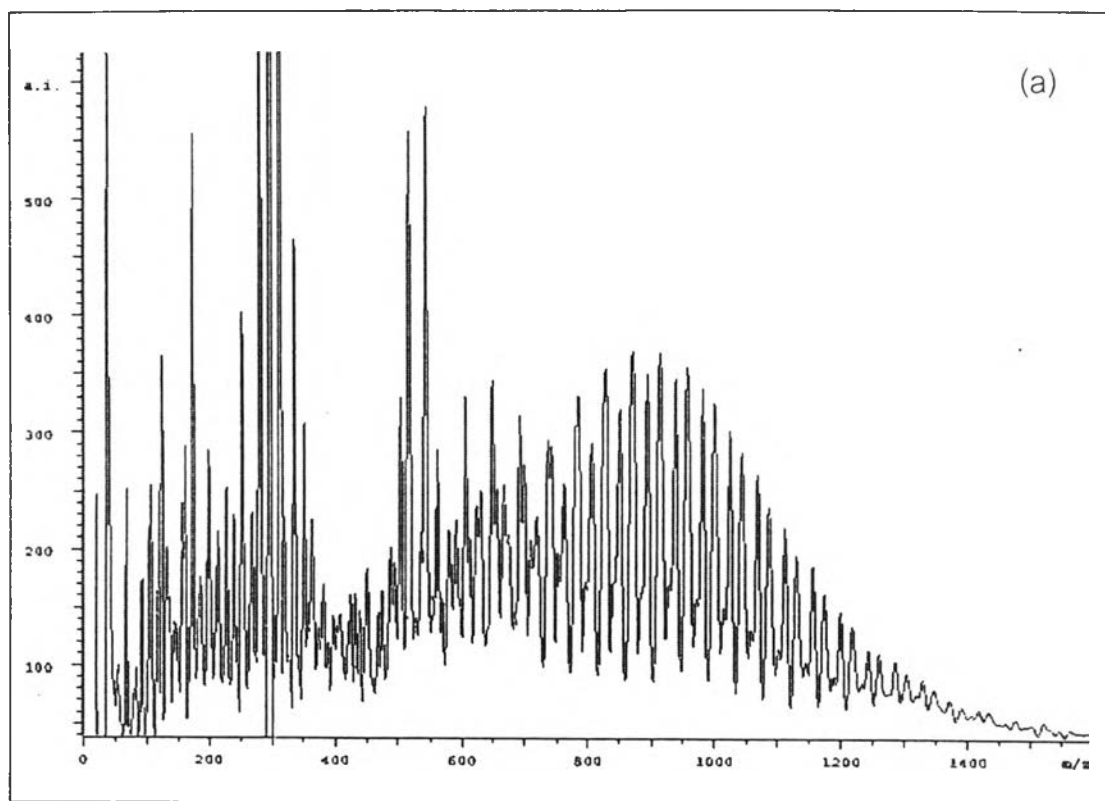


Figure A2. MALDI-MS mass spectrum of alkylamine ethoxylate using various matrix: (a) *all-trans* retinoic acid, (b) dithranol.

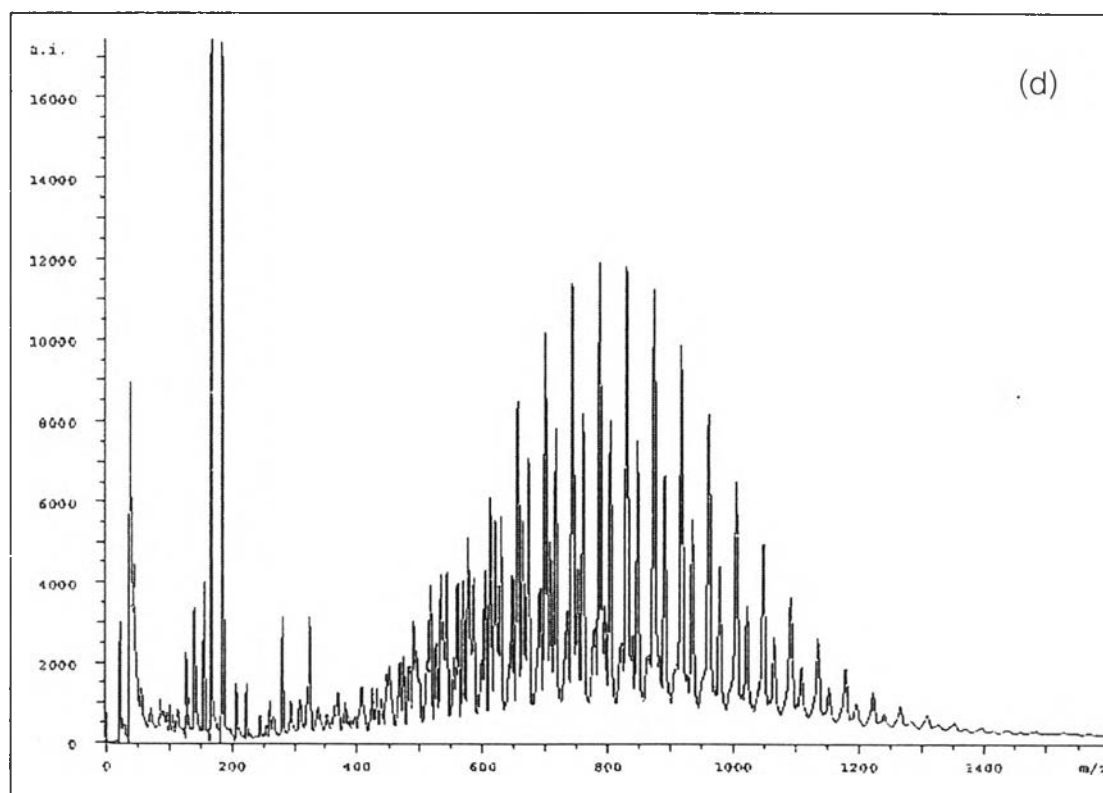
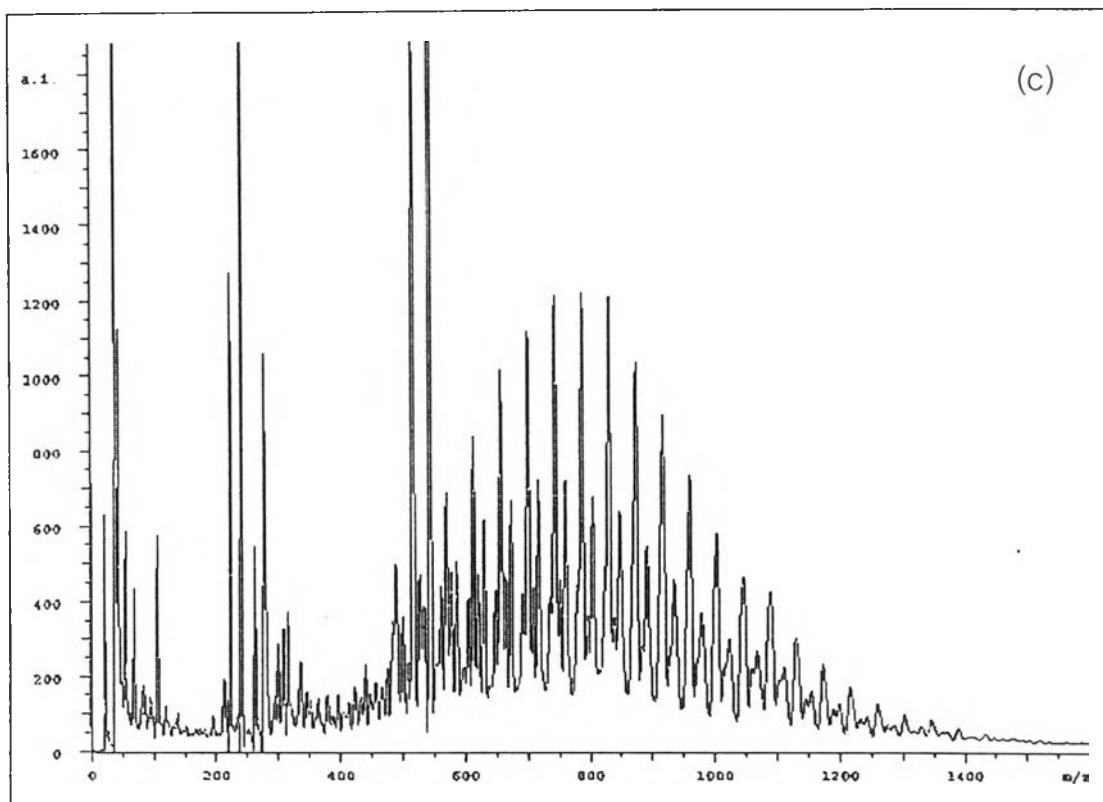


Figure A2 (continue). MALDI-MS mass spectra of alkylamine ethoxylate using various matrices: (c) 2-(4-Hydroxyphenylazo)-benzoic acid, (d) indole acrylic acid.

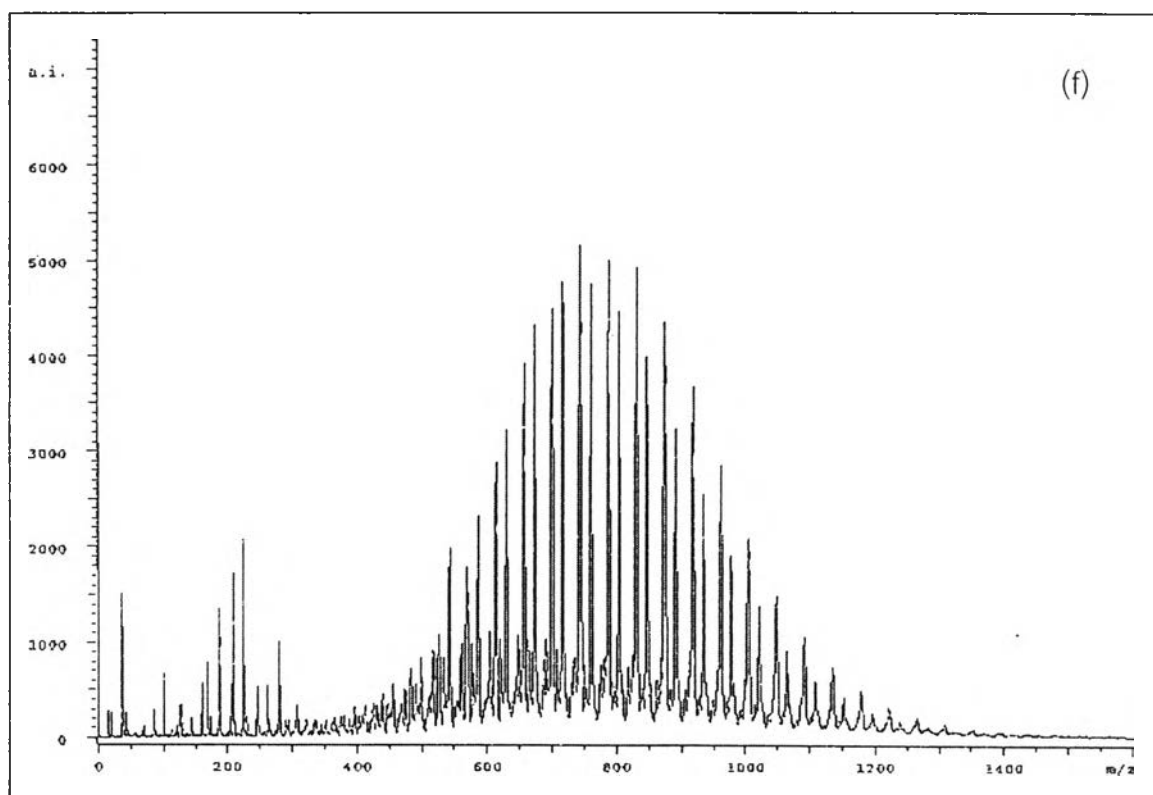
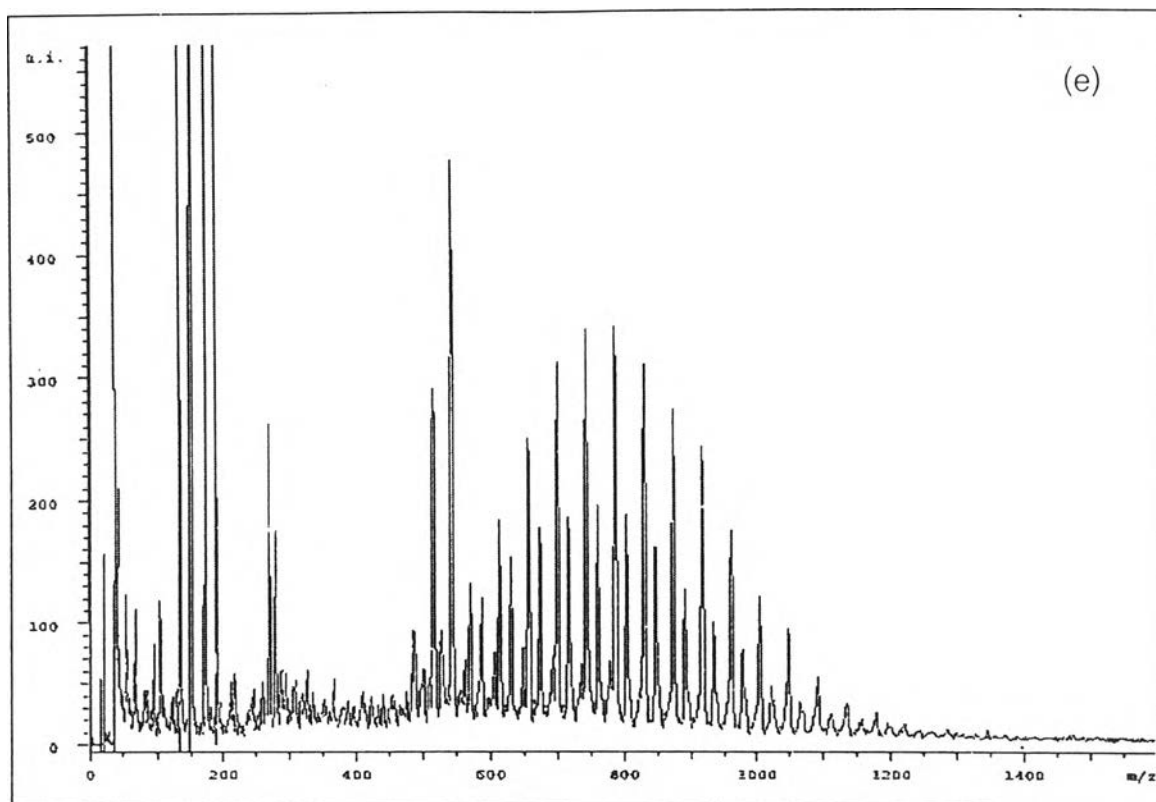


Figure A2 (continue). MALDI-MS mass spectra of alkylamine ethoxylate using various matrix: (e) 2,5-dihydroxybenzoic acid , (f) α - hydroxycyanocinnamic acid.

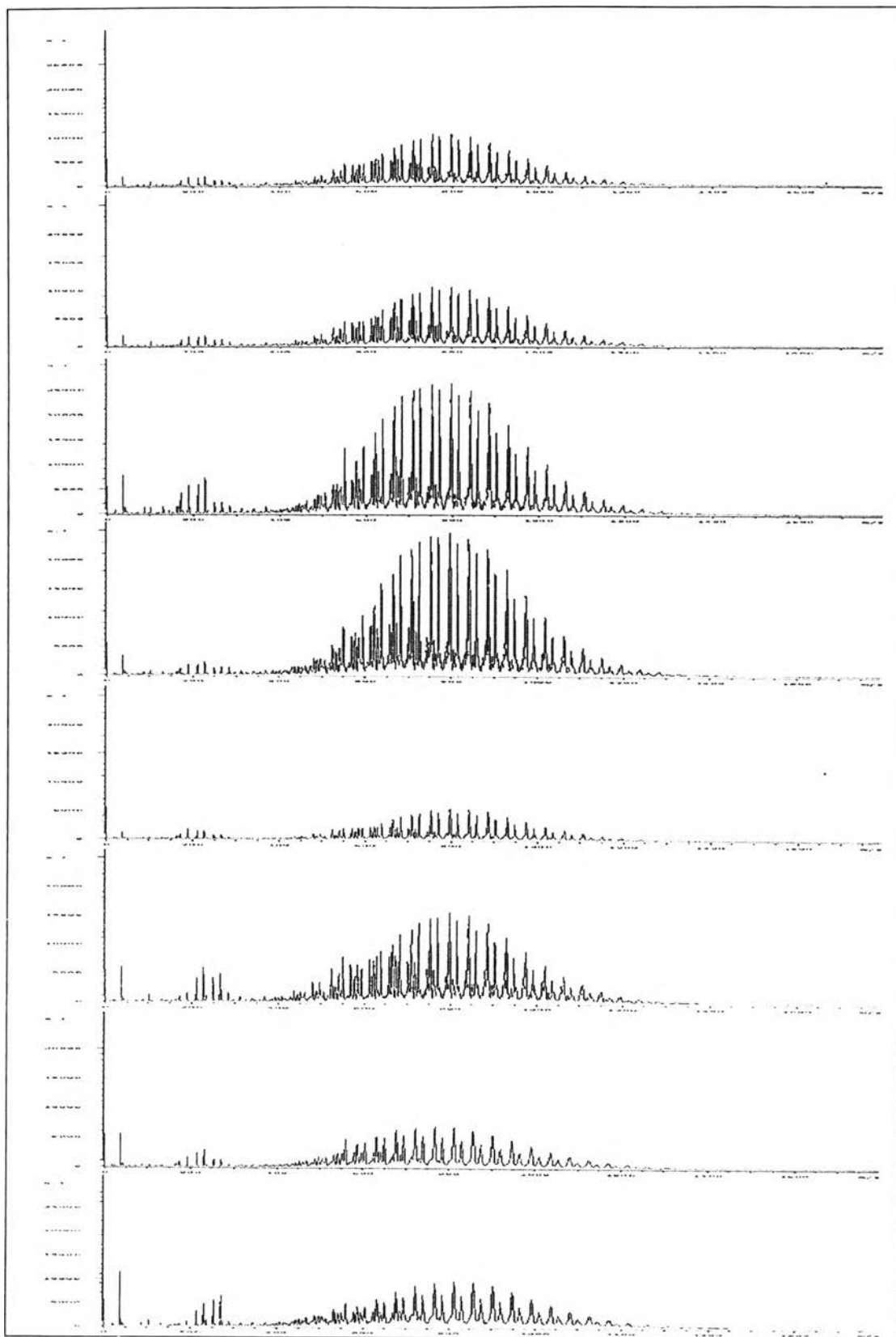


Figure A3. MALDI-MS mass spectra of alkylamine ethoxylate mixture when used 1.0 μL by load sample to the target with the same amount repeat in various positions.

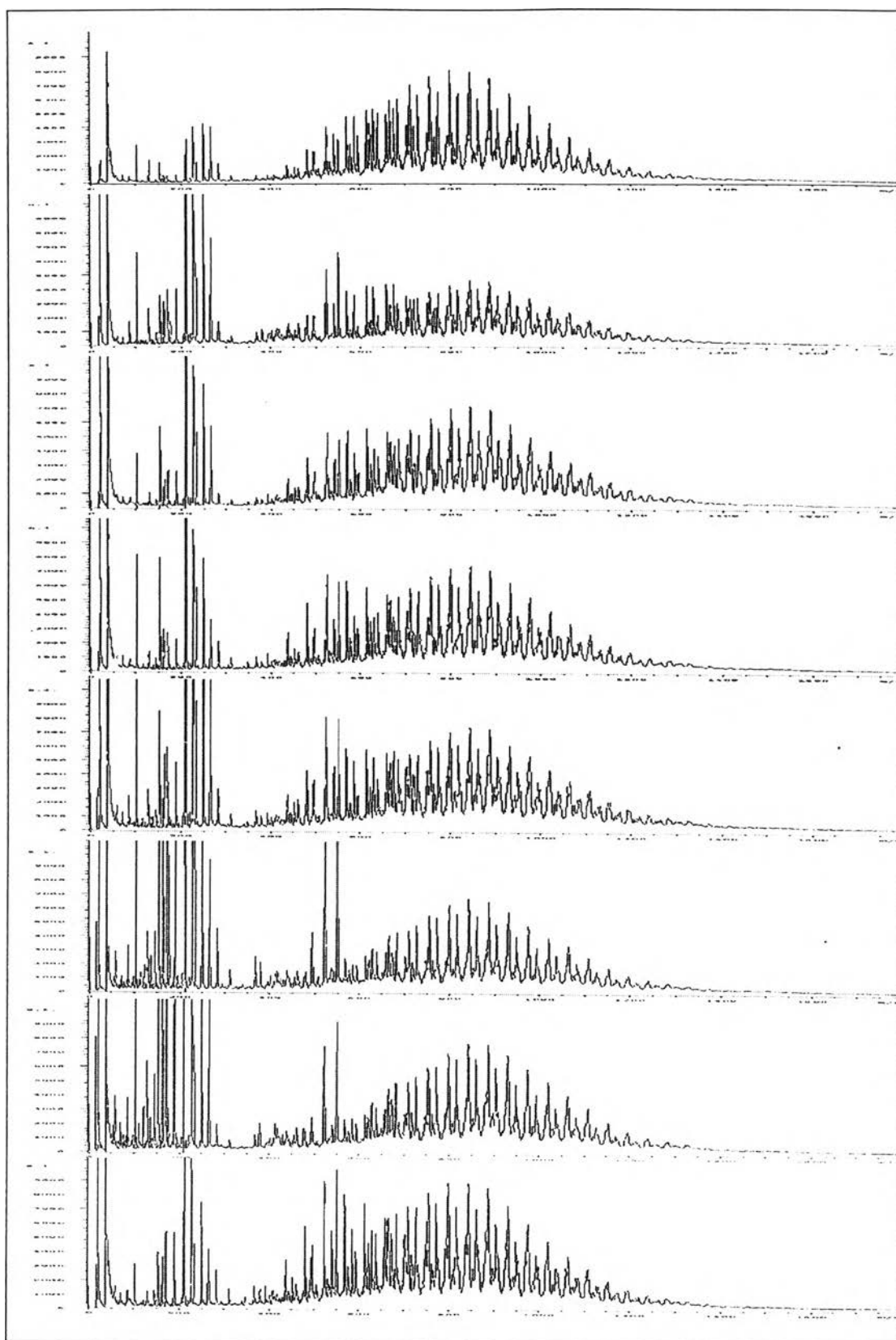


Figure A4. MALDI-MS mass spectra of alkylamine ethoxylate mixture when used 0.5 μL by load sample to the target with the same amount repeat in various positions.

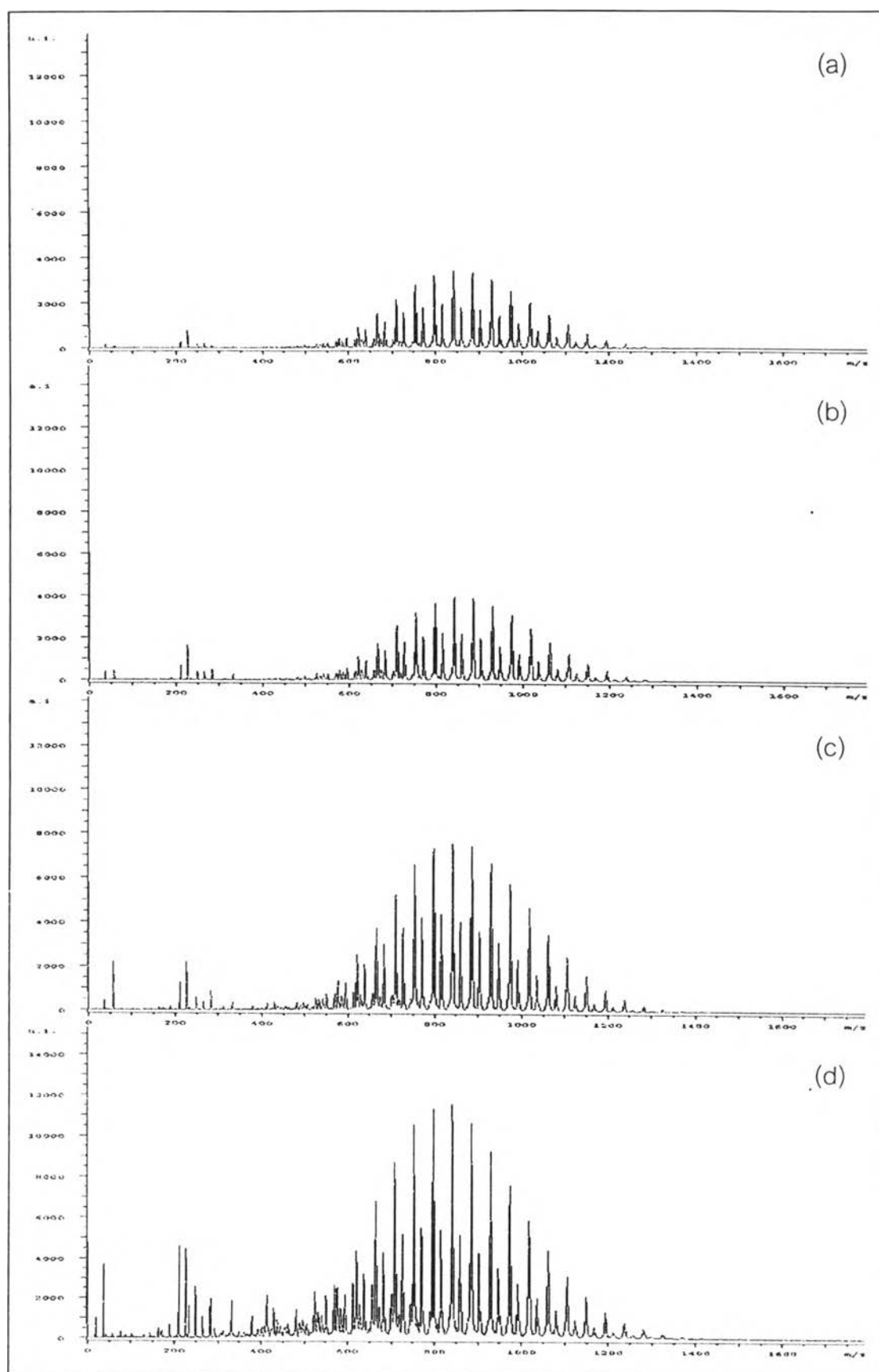


Figure A5. MALDI-MS mass spectra of alkylamine ethoxylate mixed with CCA with various ratios: (a) 1:140, (b) 1:160, (c) 1:180 and (d) 1:200.

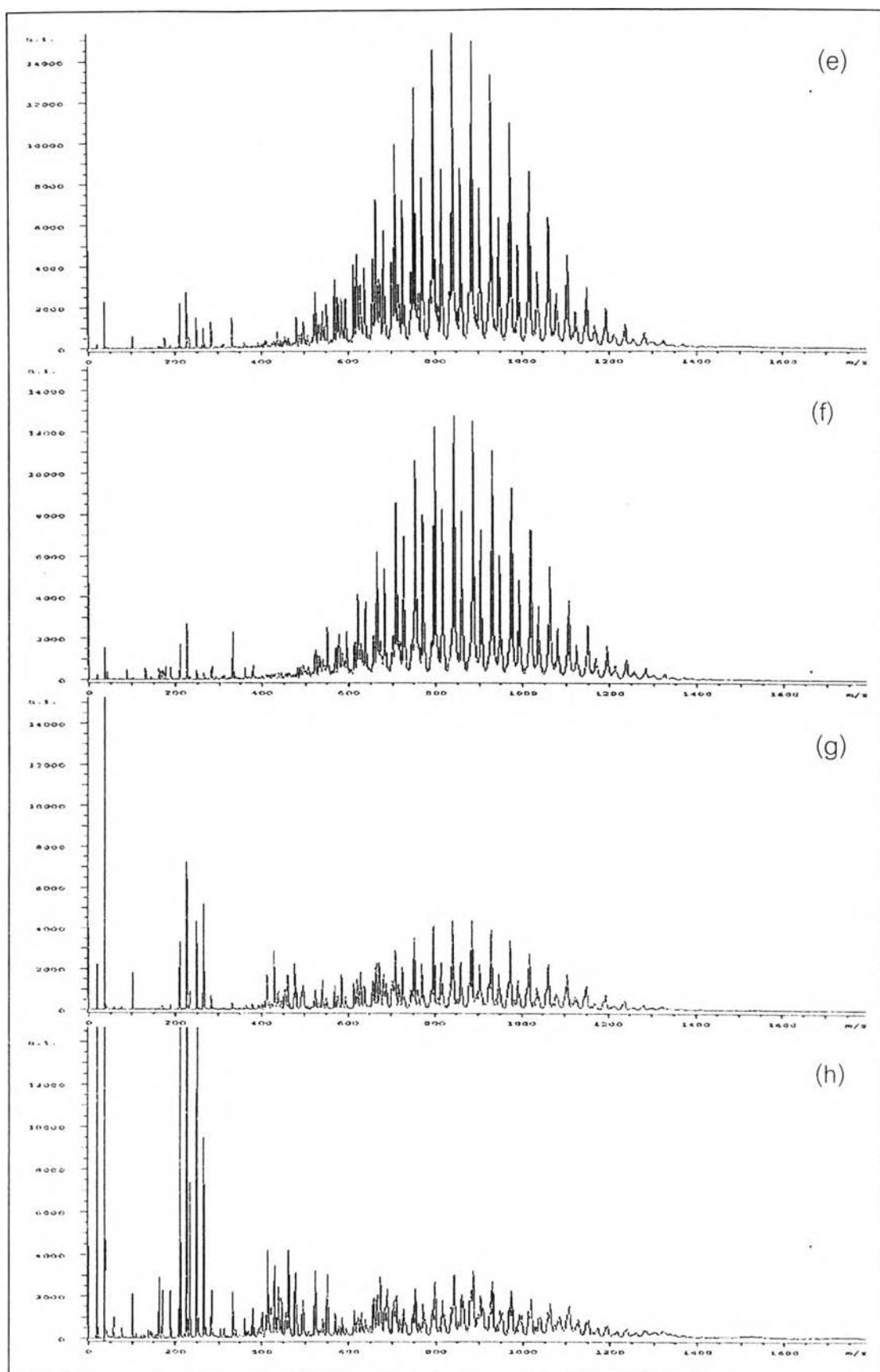


Figure A5 (continue). MALDI-MS mass spectra of alkylamine ethoxylate mixed with CCA with various ratios: (e) 1:220, (f) 1:240, (g) 1:260 and (h) 1:280.

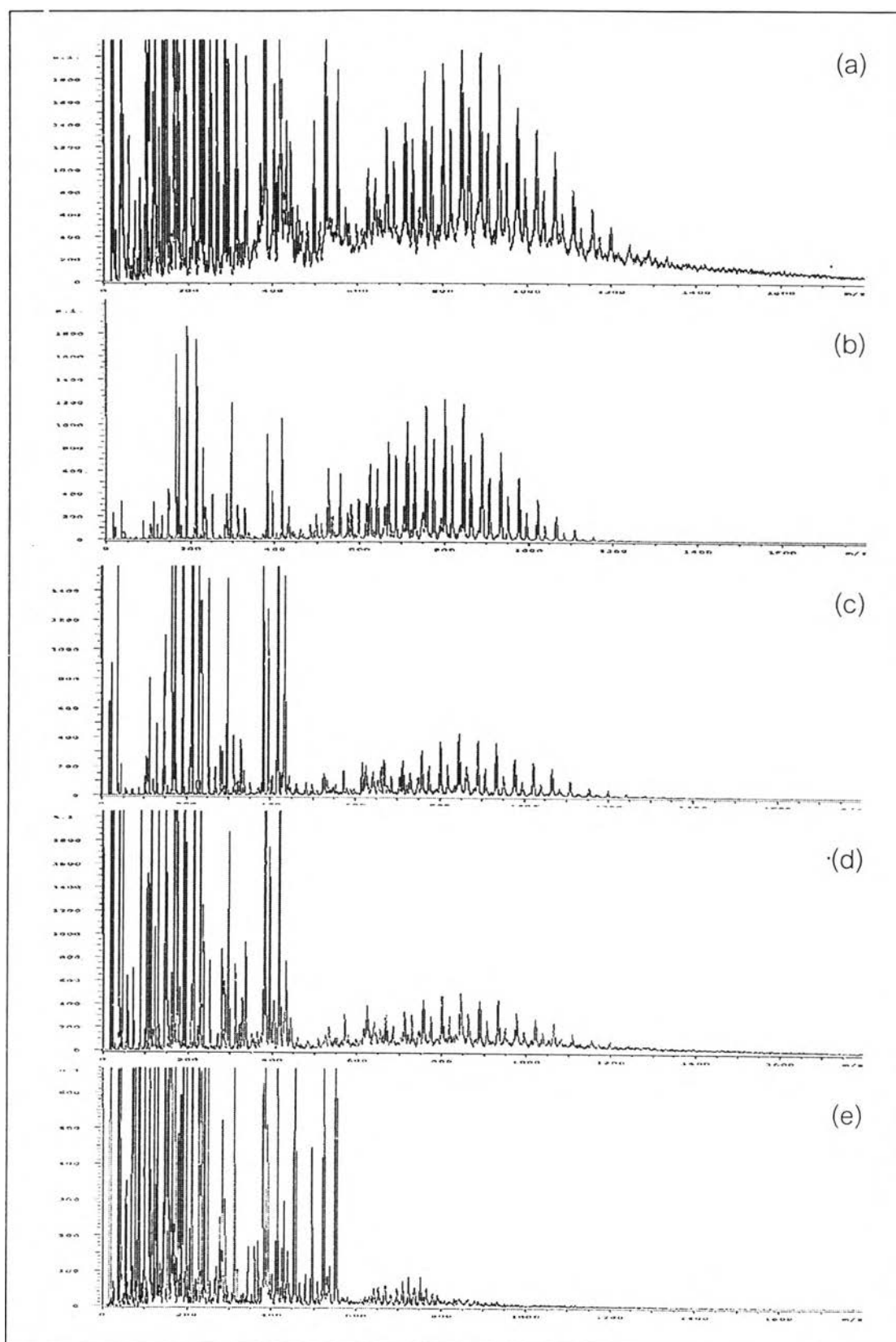


Figure A6. MALDI-MS mass spectra of various amounts of alkylamine ethoxylate mixtures: (a) 25.51, (b) 12.76, (c) 8.50, (d) 6.44 and (e) 5.06 femtomole.

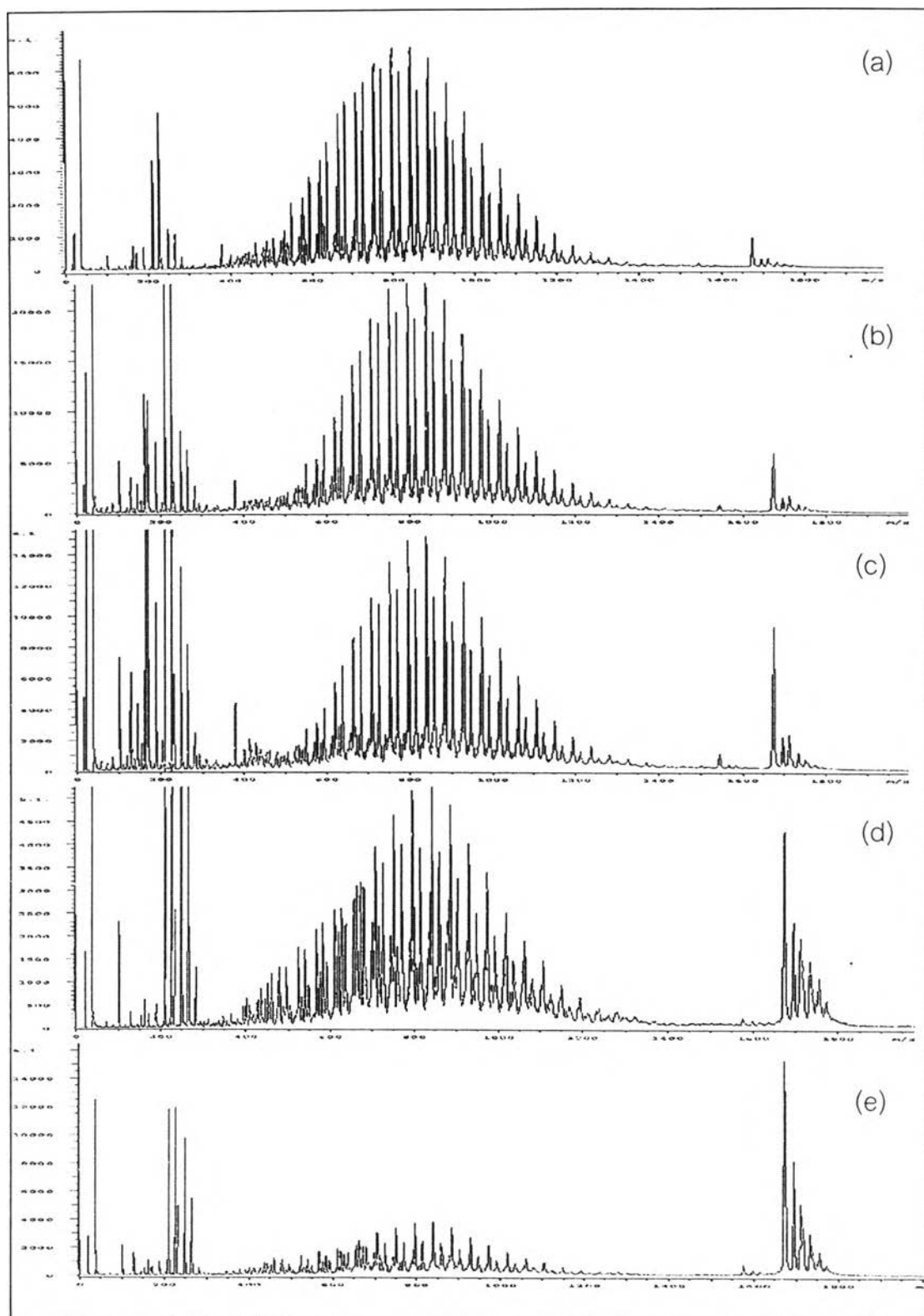


Figure A7. MALDI-MS mass spectra of various concentrations of alkylamine ethoxylate mixtures: (a) 10.00, (b) 5.00, (c) 2.50, (d) 2.00 and (e) 1.00 percent by weight.

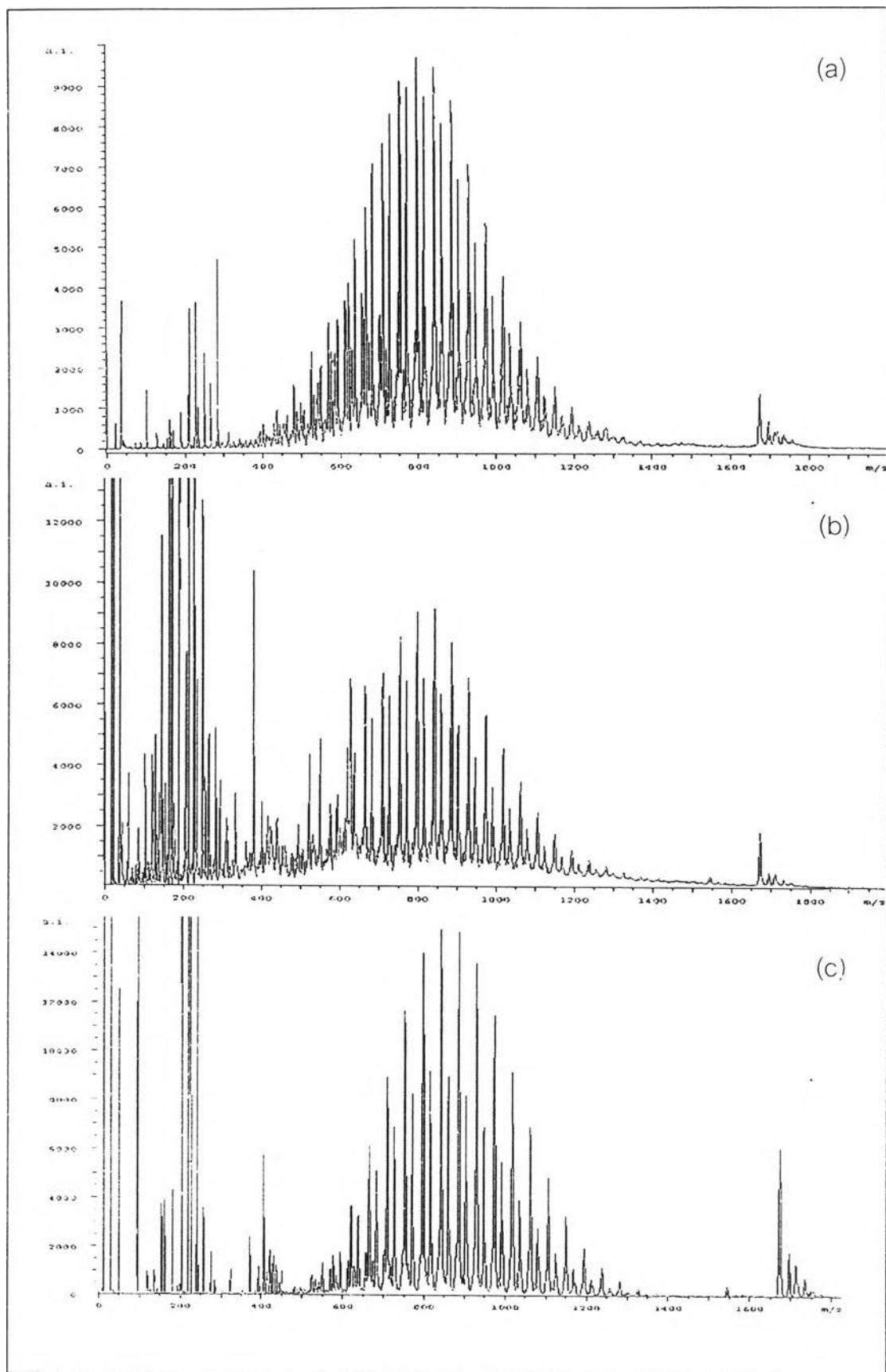


Figure A8. MALDI-MS mass spectra of various concentrations of alkylamine ethoxylate mixtures: (a) 9.00, (b) 6.50 and (c) 3.00 percent by weight.

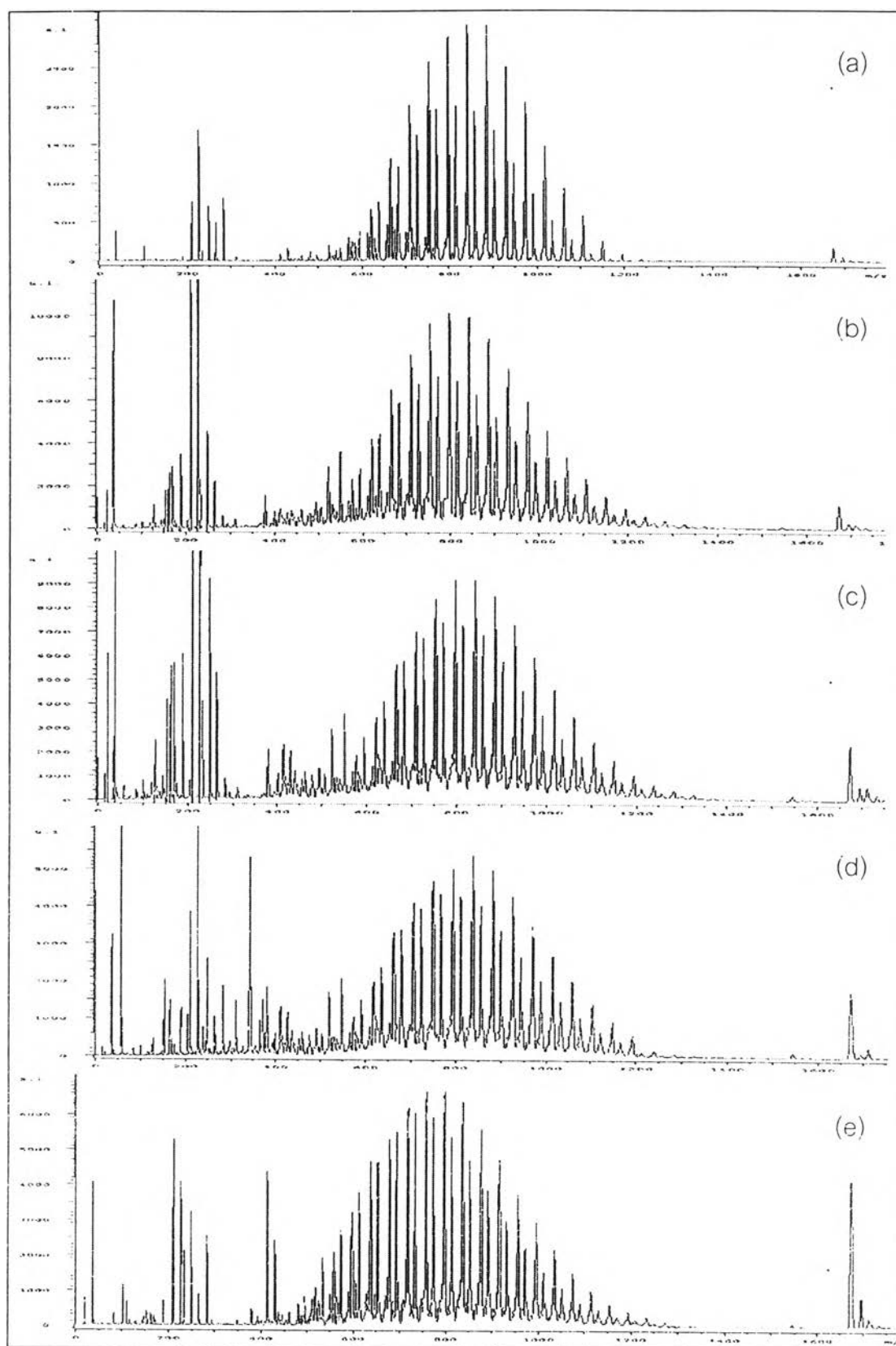


Figure A9. MALDI-MS mass spectra of various concentrations of alkylamine ethoxylate mixtures: (a) 10.00, (b) 5.00, (c) 2.50, (d) 2.00 and (e) 1.00 percent by weight to quantitative analysis of commercial-A.

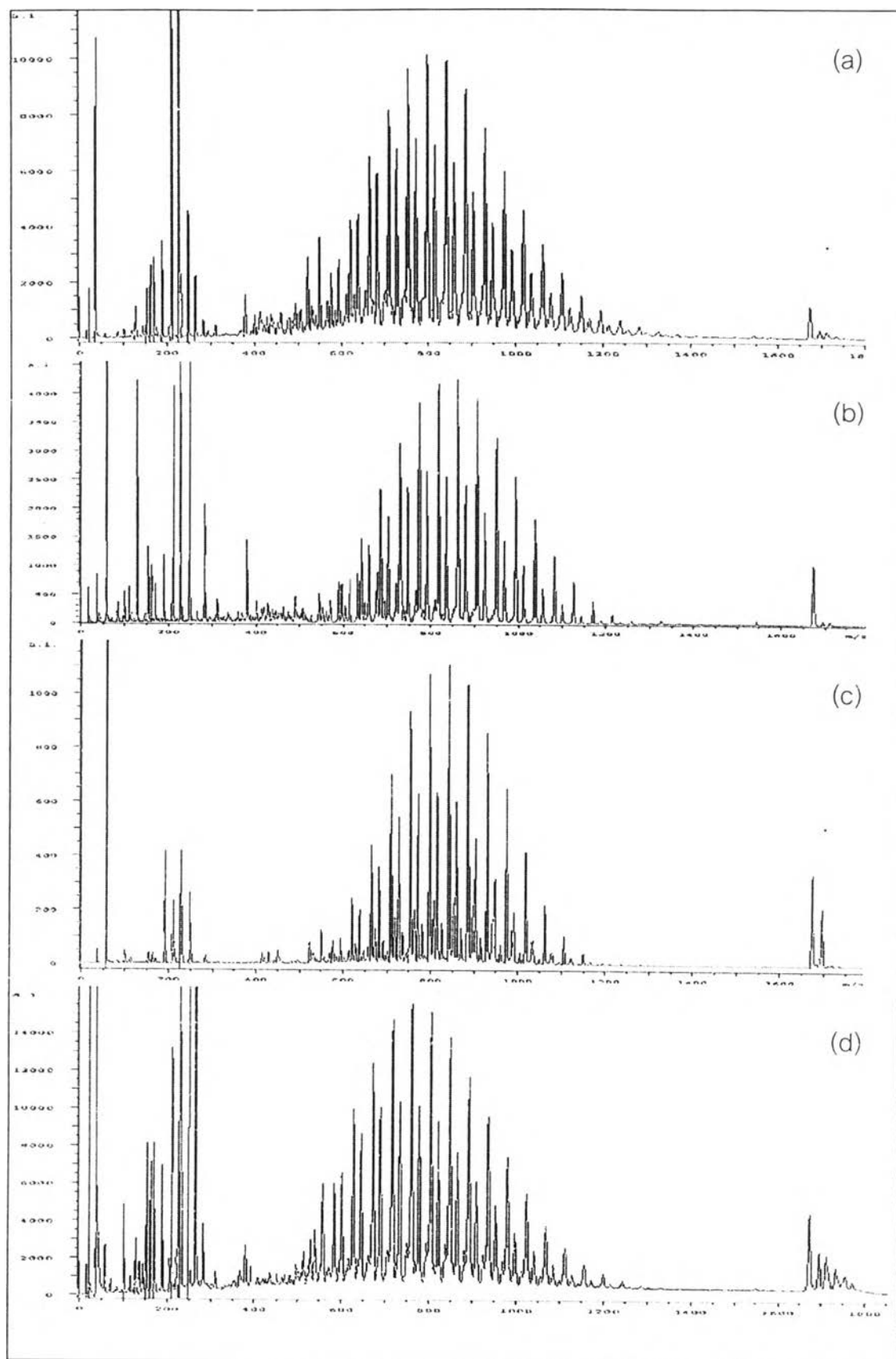


Figure A10. MALDI-MS mass spectra of various ratios diluting of commercial-
A: (a) 1:1, (b) 1:2, (c) 1:3 and (d) 1:5 by weight.

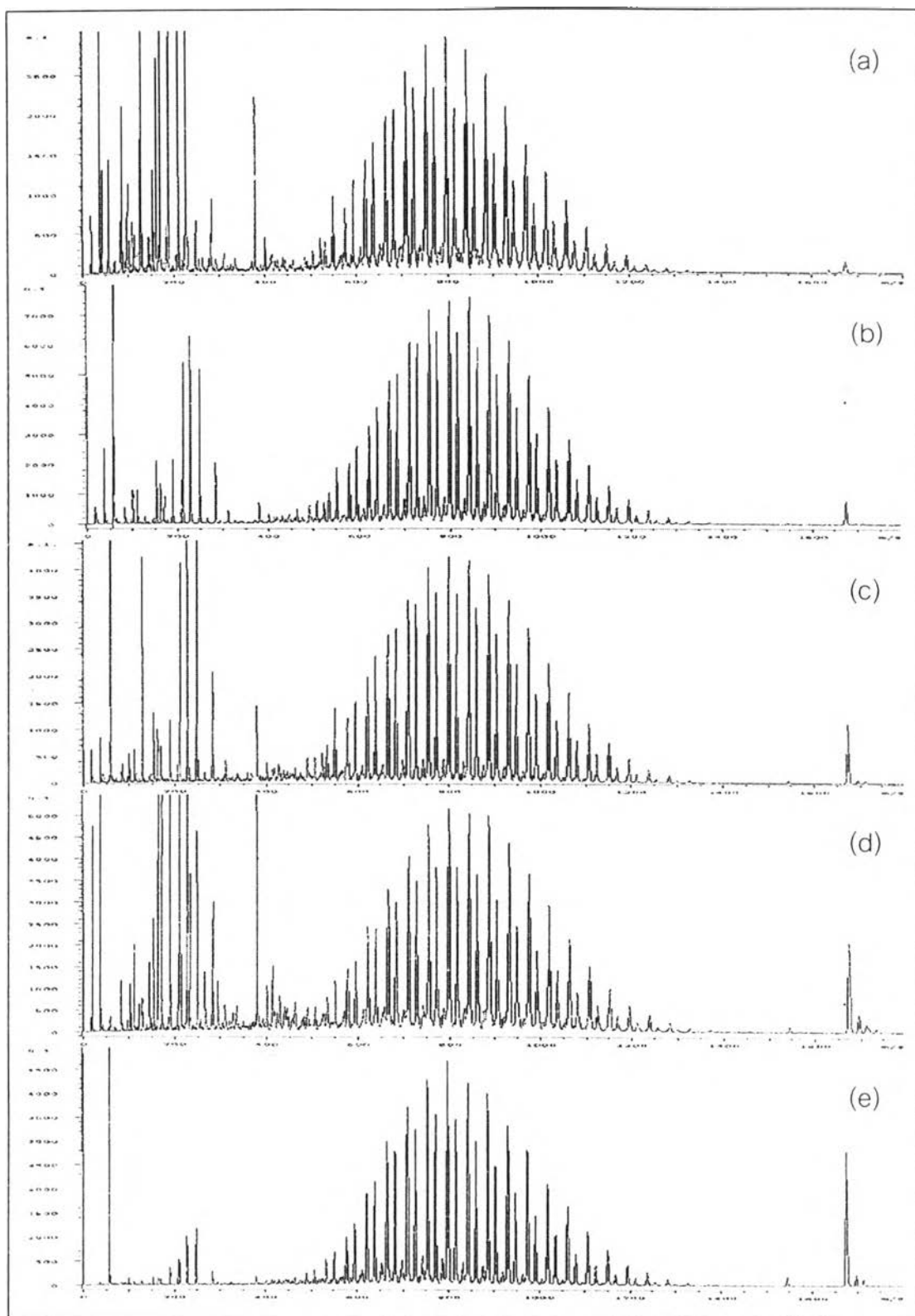


Figure A11. MALDI-MS mass spectra of various concentrations of alkylamine ethoxylate mixtures: (a) 10.00, (b) 5.00, (c) 2.50, (d) 2.00 and (e) 1.00 percent by weight to quantitative analysis of commercial-B.

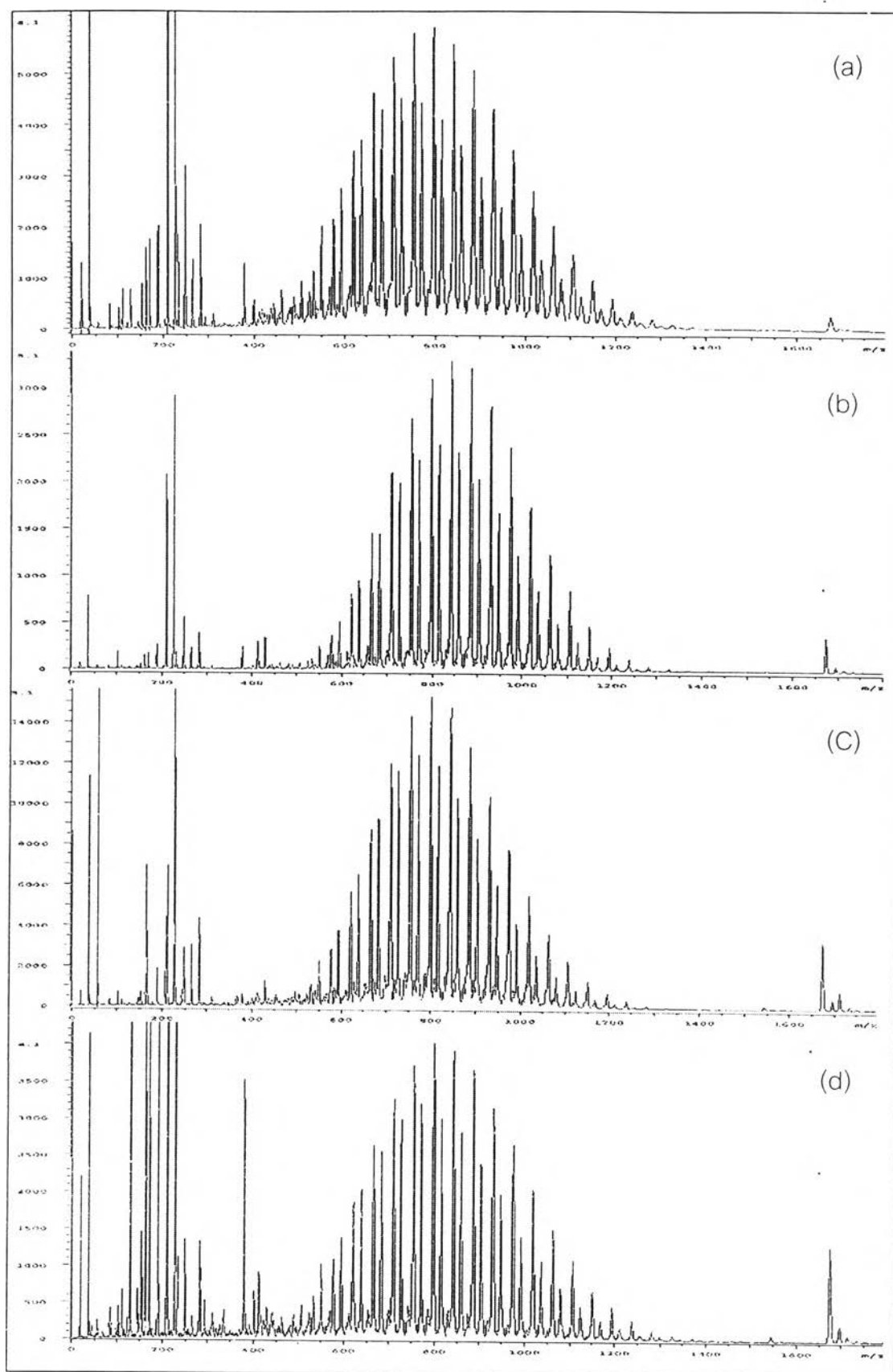


Figure A12. MALDI-MS mass spectra of various ratios diluting of commercial-B: (a) 1:1, (b) 1:2, (C) 1:4 and (d) 1:5 by weight.

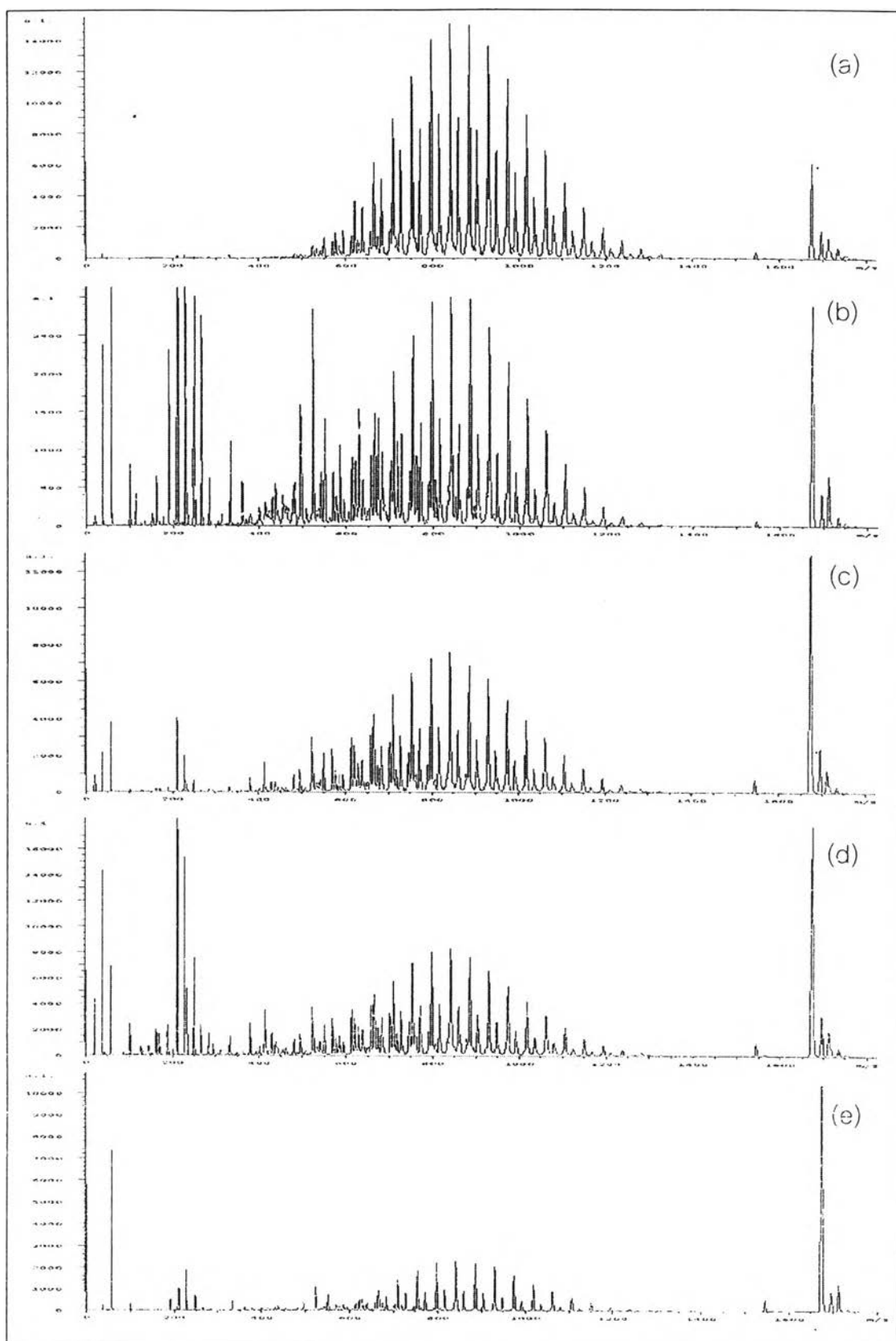


Figure A13. MALDI-MS mass spectra of various concentrations of alkylamine ethoxylate mixtures: (a) 10.00, (b) 5.00, (c) 2.50, (d) 2.00 and (e) 1.00 percent by weight to quantitative analysis of commercial-C.

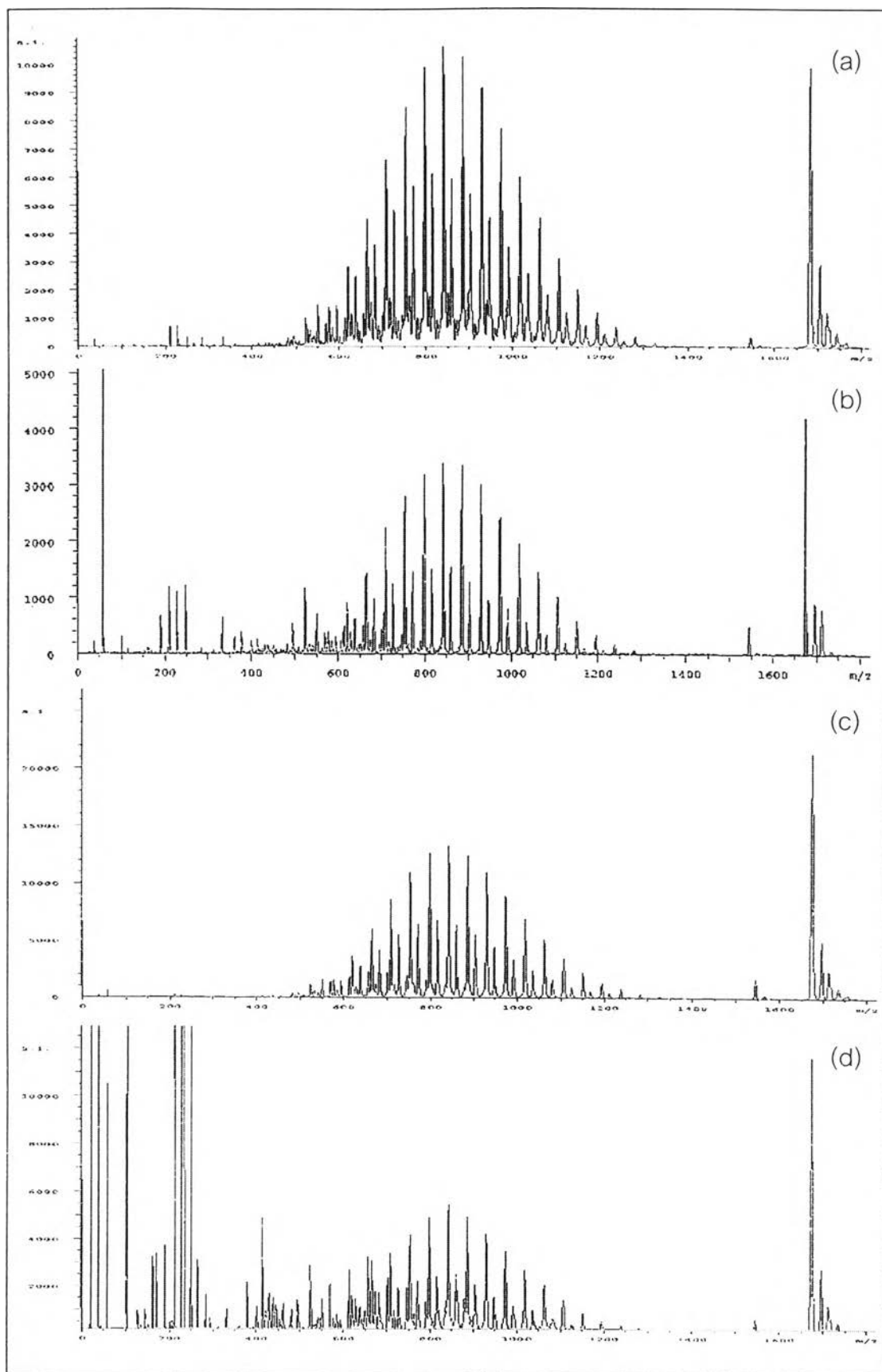


Figure A14. MALDI-MS mass spectra of various ratios diluting of commercial-C: (a) 1:2, (b) 1:3, (c) 1:4 and (d) 1:5 by weight.

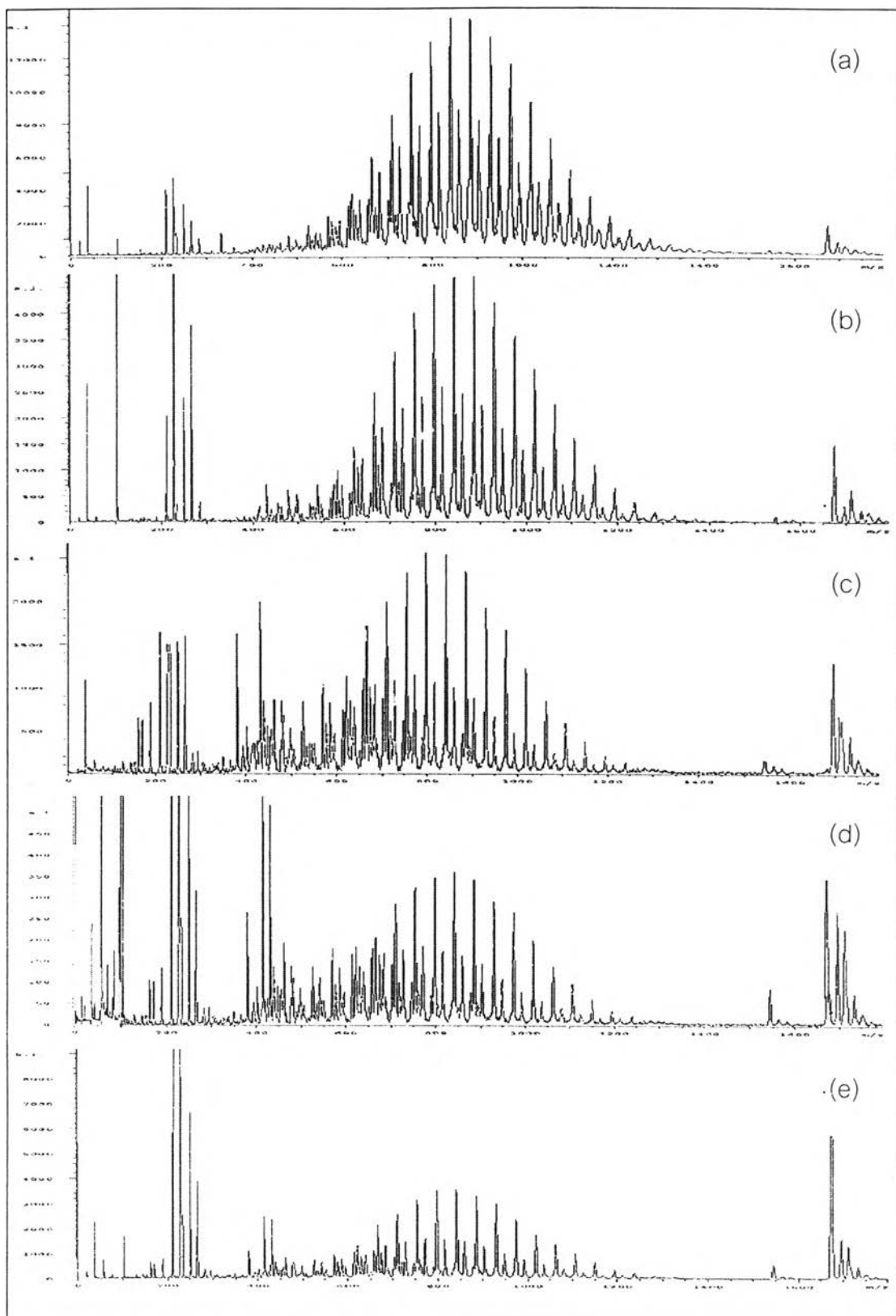


Figure A15. MALDI-MS mass spectra of various concentrations of alkylamine ethoxylate mixtures: (a) 5.00, (b) 2.50, (c) 2.00, (d) 1.00 and (e) 0.50 percent by weight to quantitative analysis of commercial-D.

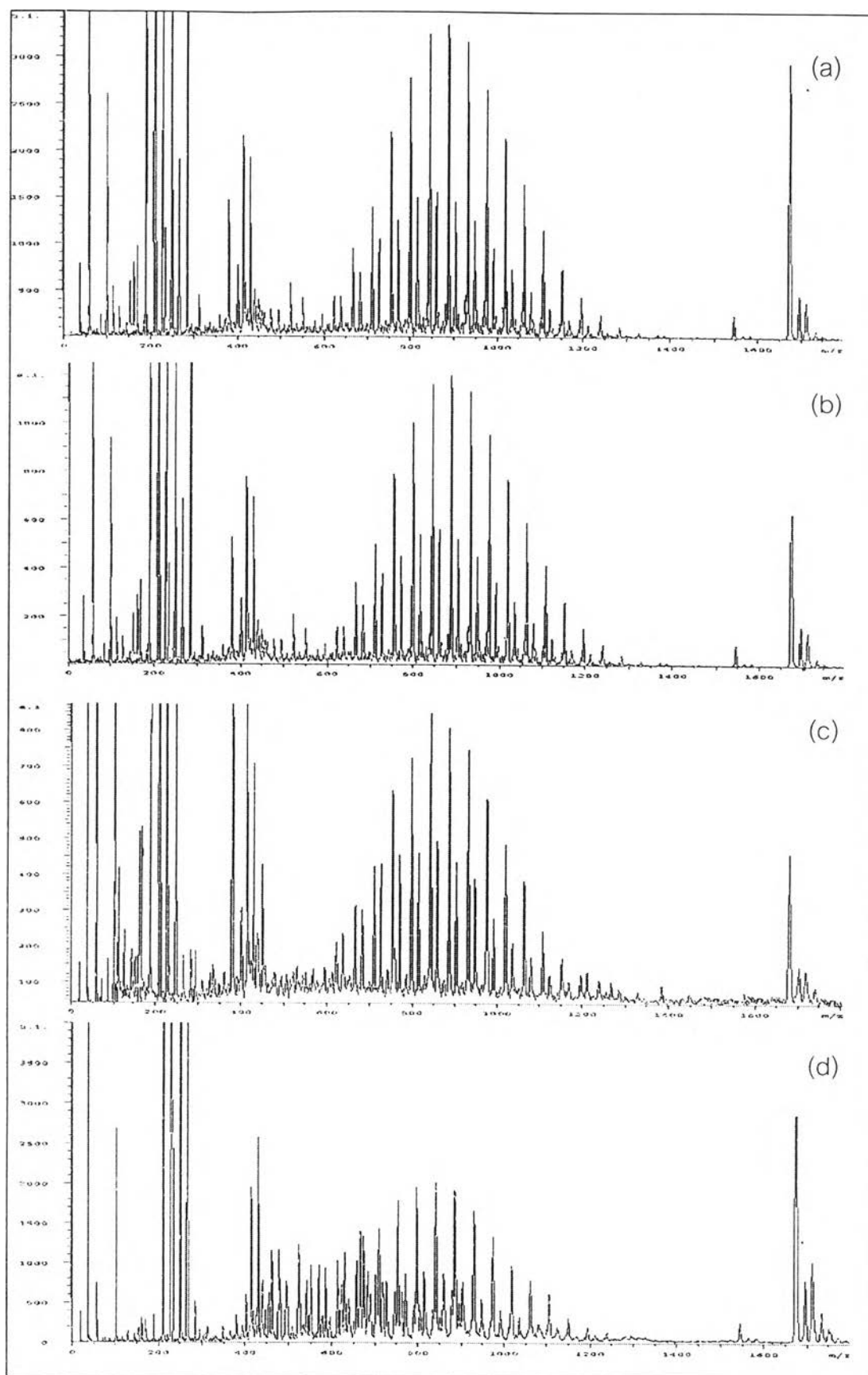


Figure A16. MALDI-MS mass spectra of various ratios diluting of commercial-D: (a) 1:1, (b) 1:1, (C) 1:1 and (d) 1:2 by weight.

VITA

Kamonrat Whanshaaim was born on September 19, 1980, in Bangkok, Thailand, She received her Bachelor's degree of Science in Chemistry, Chulalongkorn University in 2001. She continued the Master Program of Multidisciplinary of Petrochemistry and Polymer Science, Chulalongkorn University. She completed the program in 2004.

