



## REFERENCES

- Abel-Smith B. (1987). Improving Cost-effectiveness in Health Care. Health Care - Who Pays? World Health Forum, WHO, Geneva, Switzerland.
- \_\_\_\_\_ (1991). Financing Health For All. World Health Forum, WHO, Geneva, Switzerland.
- Aljunid S. (1995). The Role of Private Medical Practitioners and Their Interactions with Public Health Services in Asian Countries. Health Policy and Planning, 10(4), Oxford University Press.
- Bennet, S. (1991). The Mystique of Market: Public and Private Health Care in Developing Countries. Public Health Policy Unit, London School of Hygiene and Tropical Medicine.
- Drummond M. and Stoddart G. (1985). Principles of Economic Evaluation of Health Programmes. World Health Statistics Quarterly, WHO, Geneva, Switzerland.
- Hsiao W. C. (1993). Health Care Financing in Thailand: Challenges for the Future. Seminar presentation on Health Care Financing in Thailand sponsored by the NESDB, MOPH and the World Bank.
- Muschell J. (1995). Health Economics Technical Briefing Note: Privatization in Health. WHO Task Force on Health Economics, WHO, Geneva.
- Nittayaramphong S. et al. (1994) Thailand: Private Health Sector Out of Control? Health Policy and Planning; 9(1):30-40, Oxford University Press.
- Nopparat Rajathanee Hospital (1993): The Development of a Network of Public-Private mix Primary Medical Care Facilities in the Social Security Insurance System.
- Pannarunothai S. (1995) Present situation of the Thai Health Care Financing and Delivery System. A mimeograph.

Tangcharoensathien V. et al.(1995), The Public-Private Mix in Thailand, Health System in Transition; No. 1/95, Health System Research Institute, Bangkok, Thailand.

\_\_\_\_\_. (1995) Health Care Financing in Thailand, Health System in Transition; No. 1/95, Health System Research Institute, Bangkok, Thailand.

Thailand Health Research Institute (1994) The First National Health Examination Survey.

World Health Organization (1991). Inter-Regional Meeting on the Public/Private mix in National Health Systems and the Role of Ministries of Health. Mexico, 22-26 July, 1991.

## **APPENDIX**

Figure 4.1.1: Number of Inpatients in Ban Paew Hospital

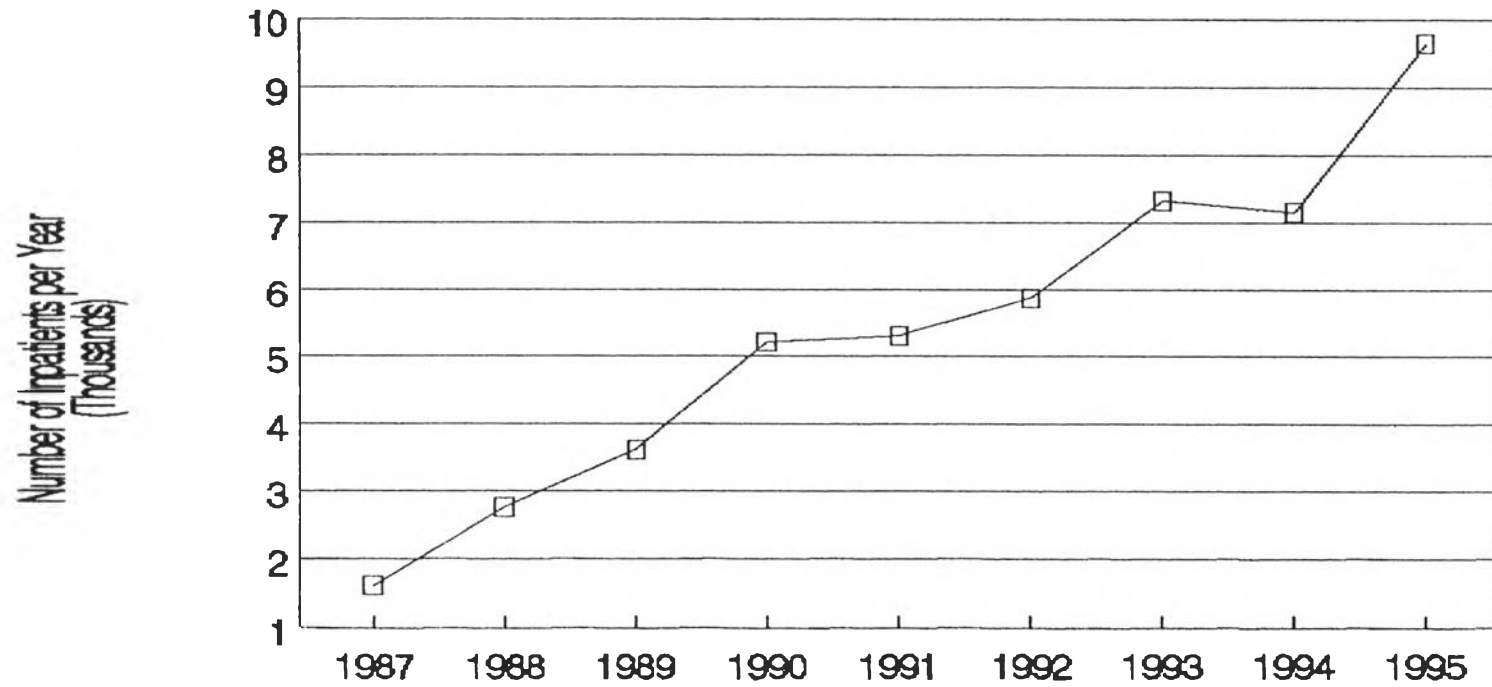


Figure 4.1.2: Growth of Inpatients in Ban Paew Hospital

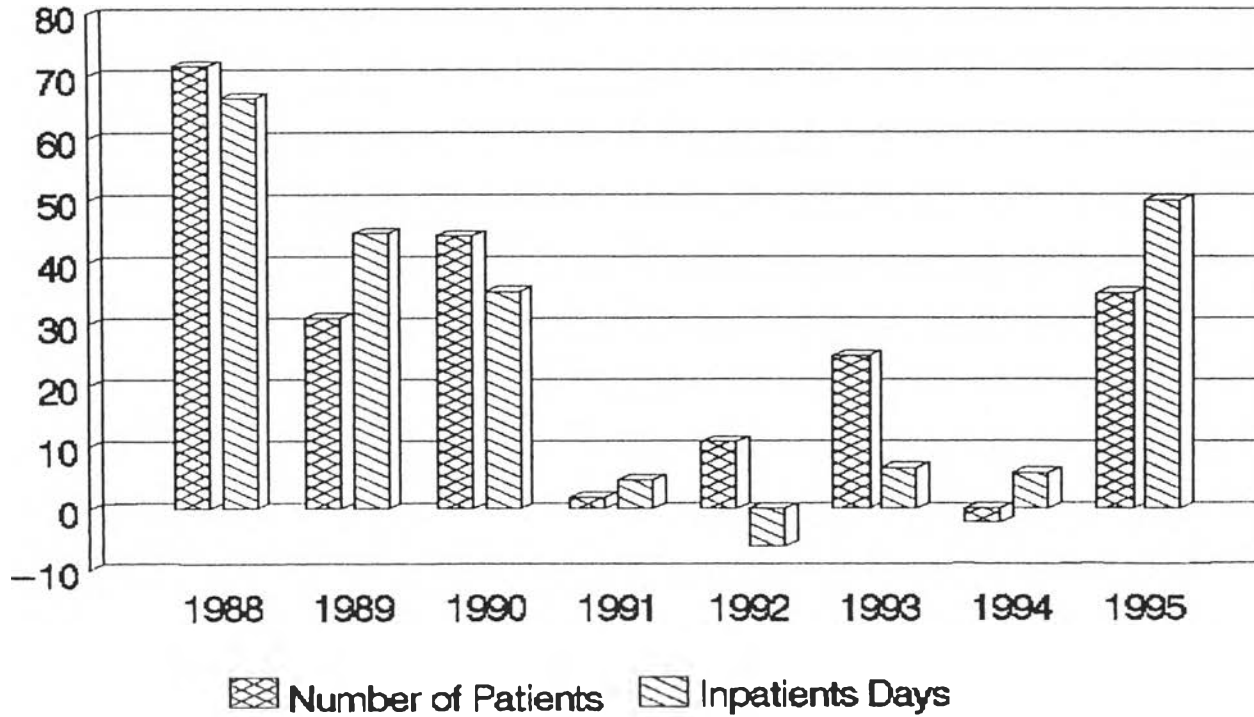


Figure 4.1.3: Bed Capacity versus Average Daily Census in Ban Paew

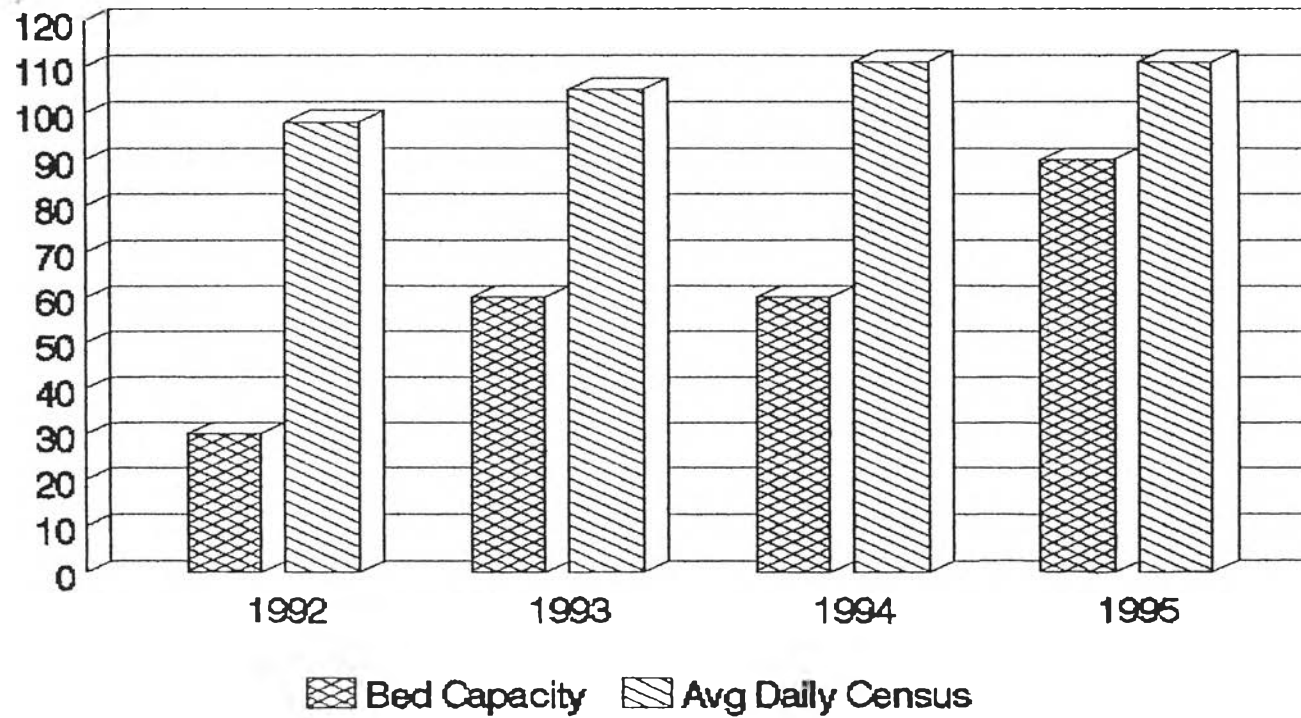


Figure 4.1.4: Inpatients by Department in Ban Paew Hospital

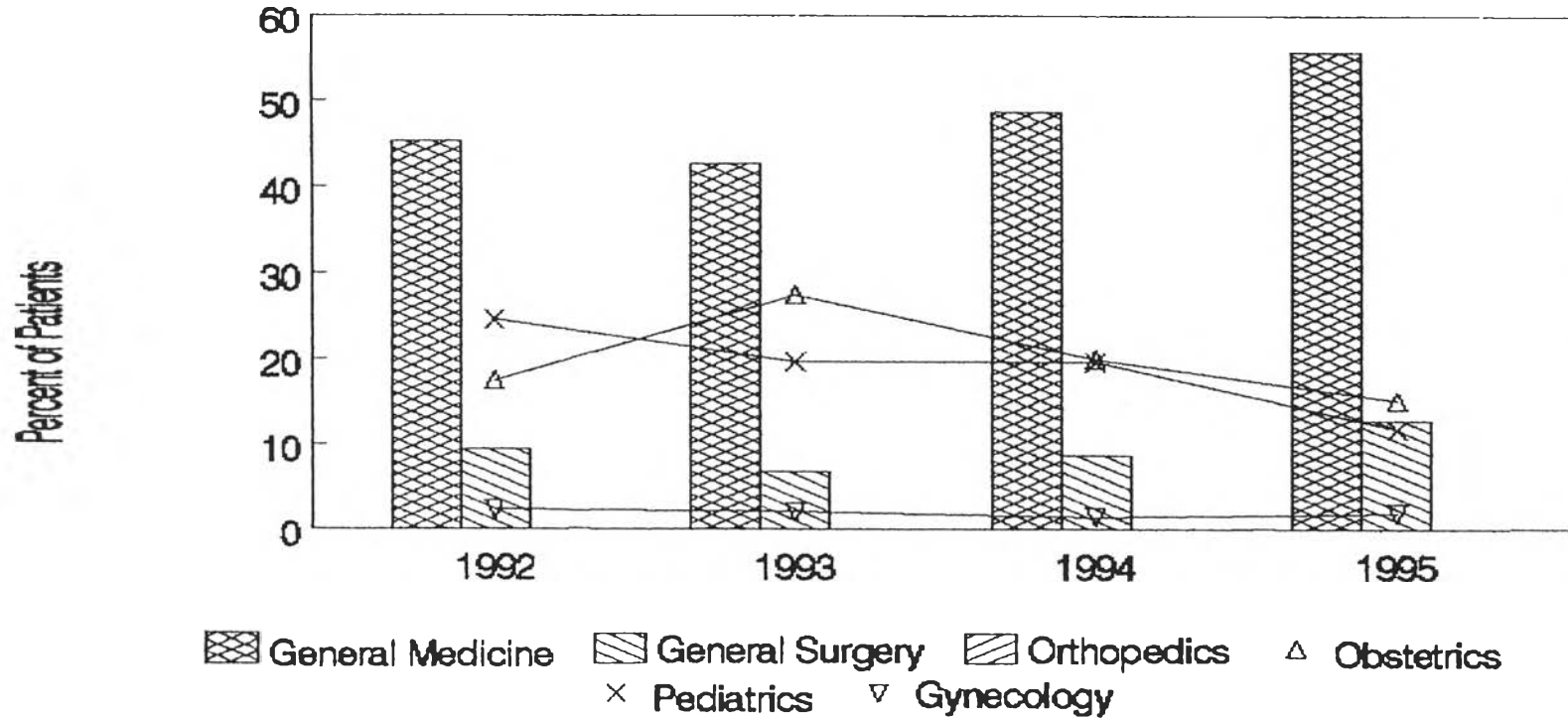
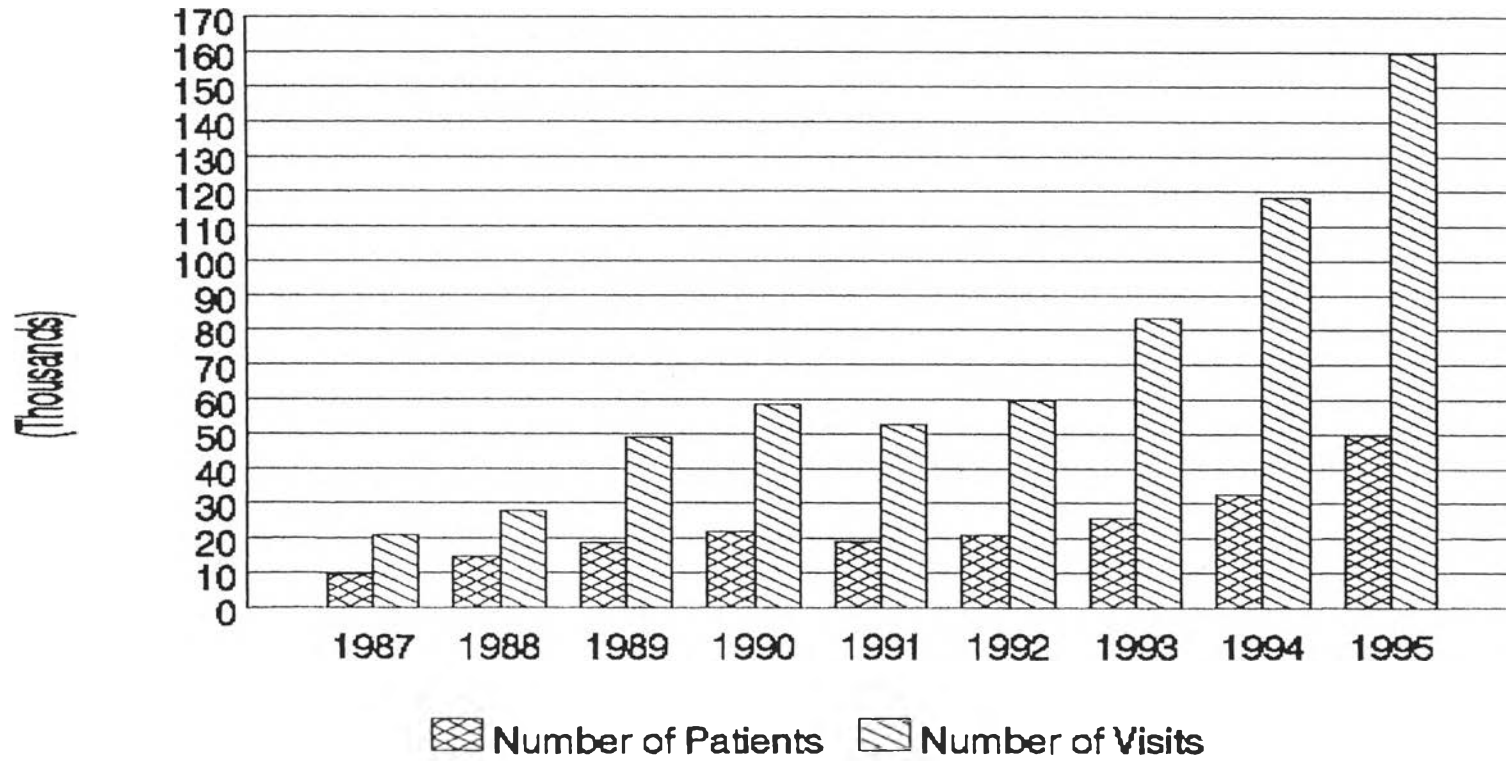
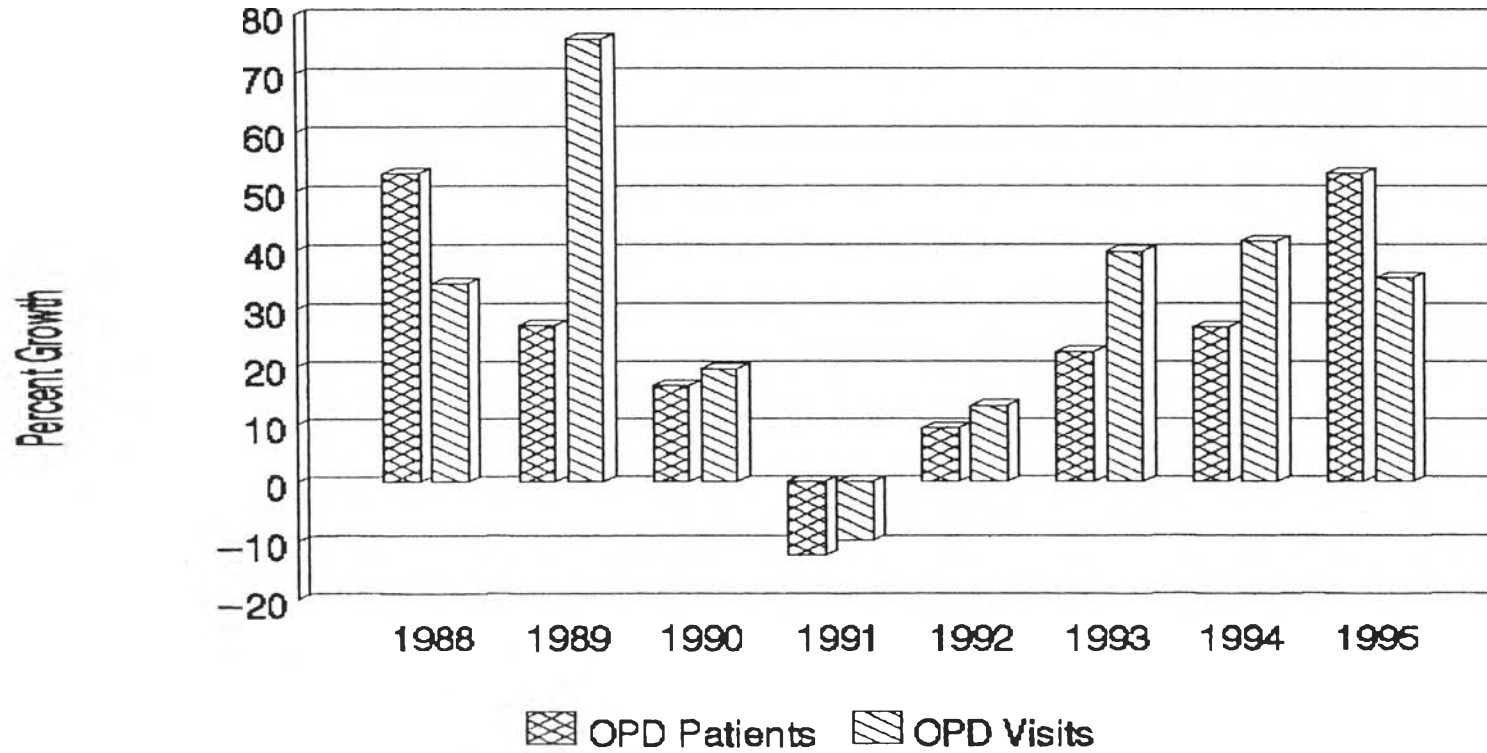


Figure 4.1.5: Number of OPD Patients and Visits in Ban Paew Hospital

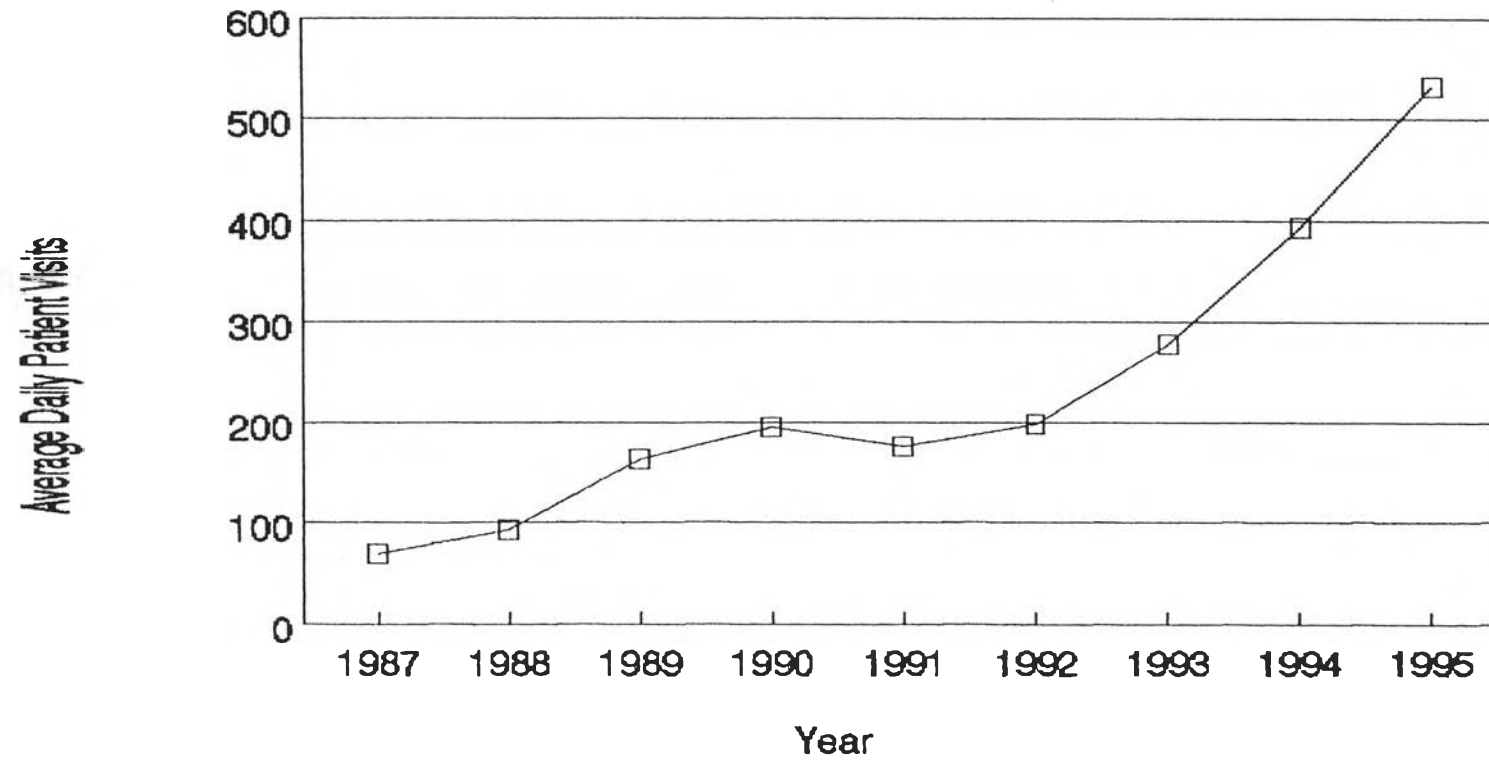




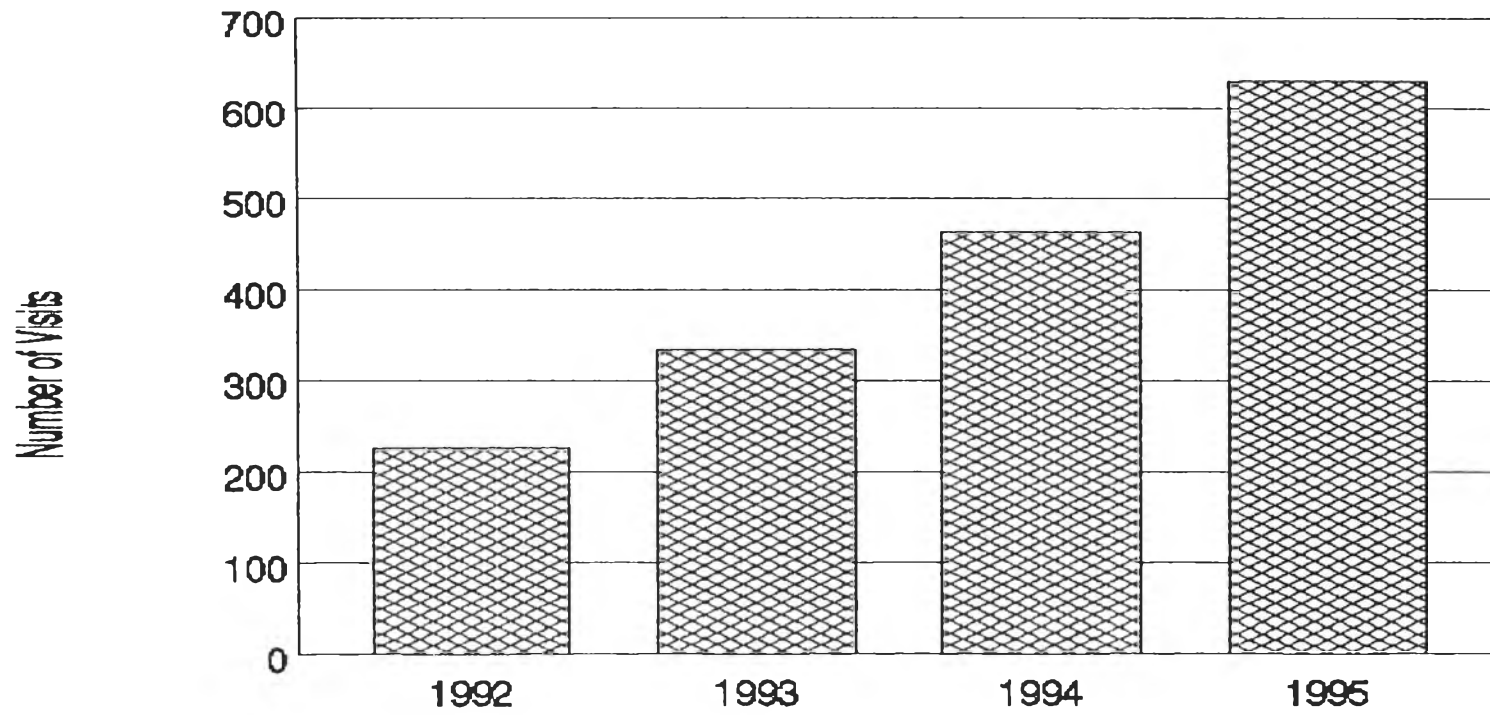
**Figure 4.1.6: Growth of OPD Patients/Visits in Ban Paew Hospital**



**Figure 4.1.9: Average Daily OPD Patient Visits in Ban Paew Hospital**



**Figure 4.1.8: Average Daily Visits of All Clients in Ban Paew Hospital**



**Figure 4.1.9: Number of OPD Visits by Department in Ban Paew Hospital**

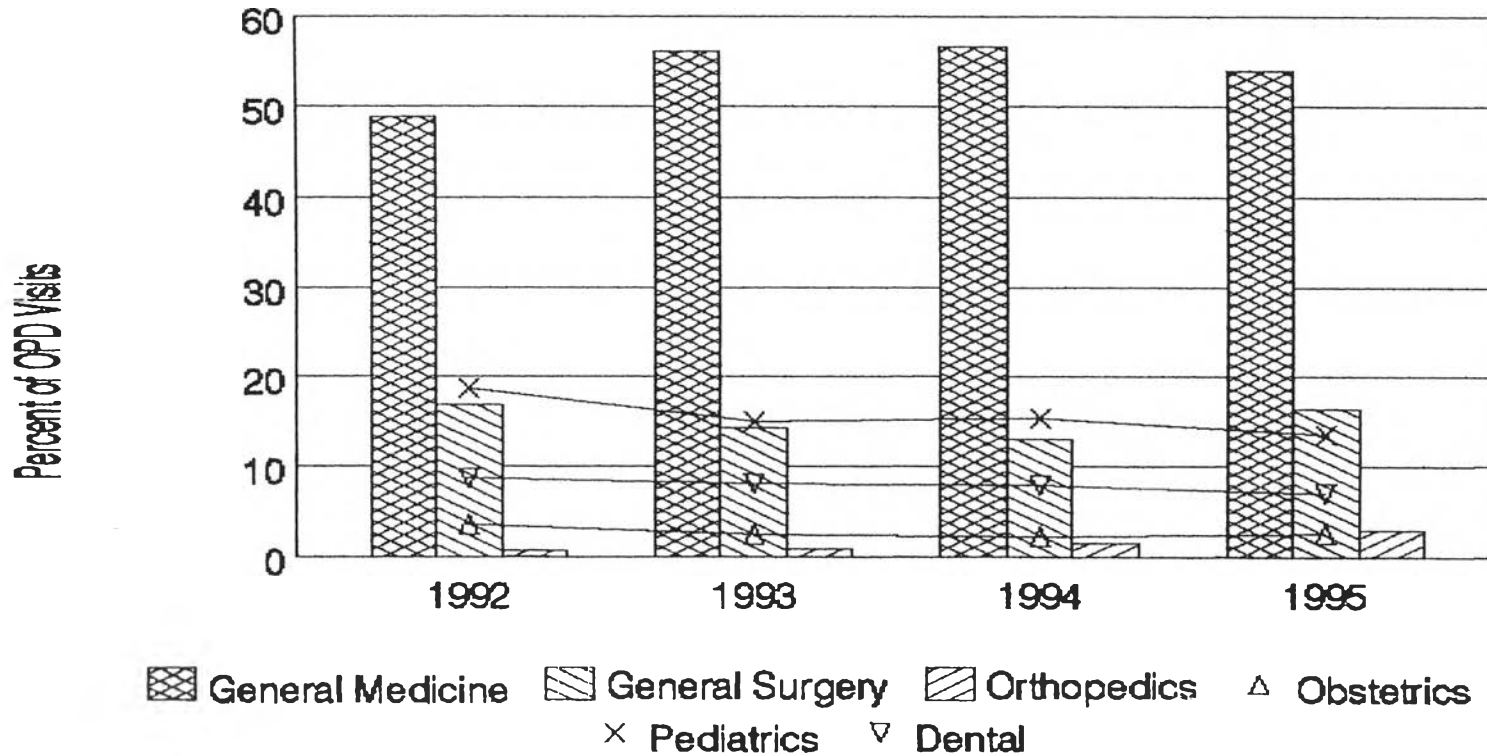


Figure 4.1.10: Comparison of Population, IPD and OPD Patients in Ban Paew

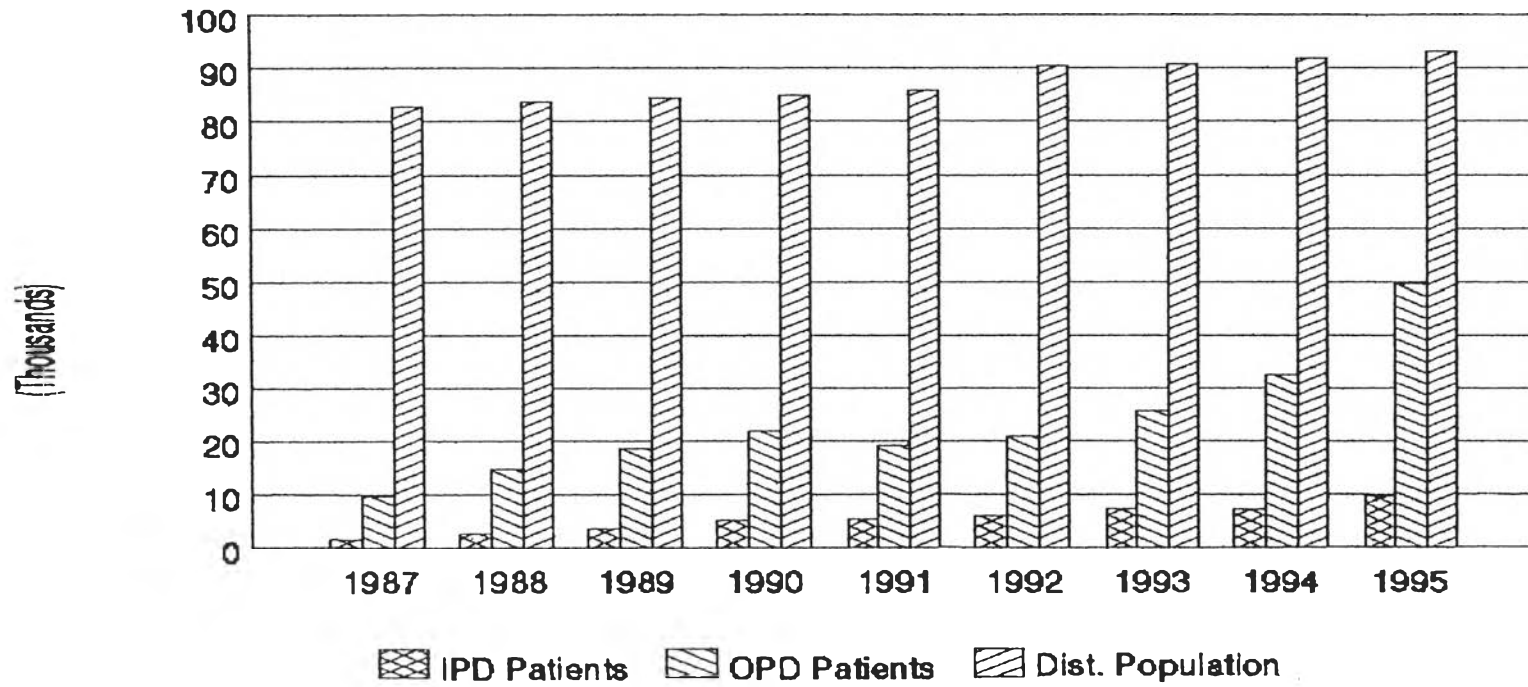


Figure 4.1.11: Percent of Population as IPD and OPD Patients in Ban Paew

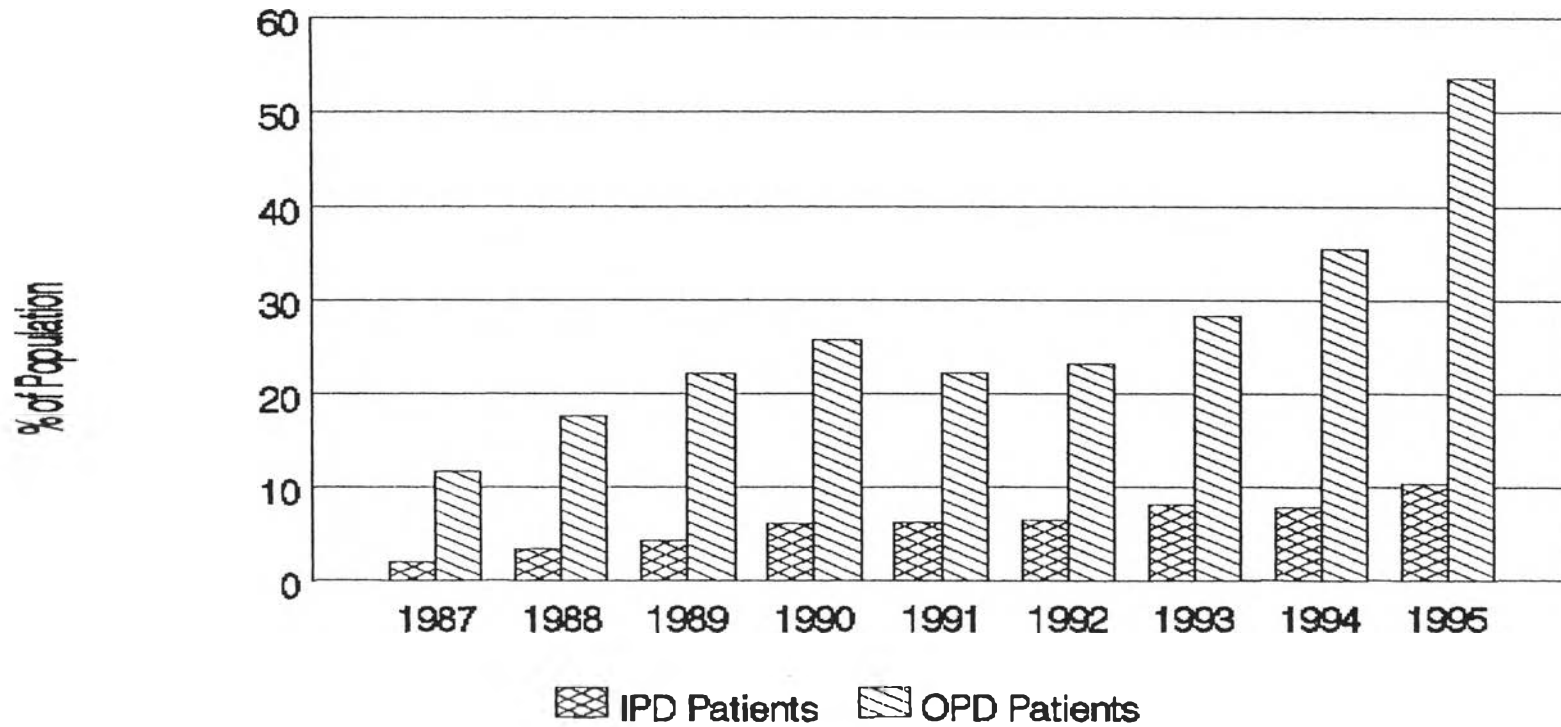


Figure 4.1.12: Growth of Population, IPD and OPD Patients in Ban Paew

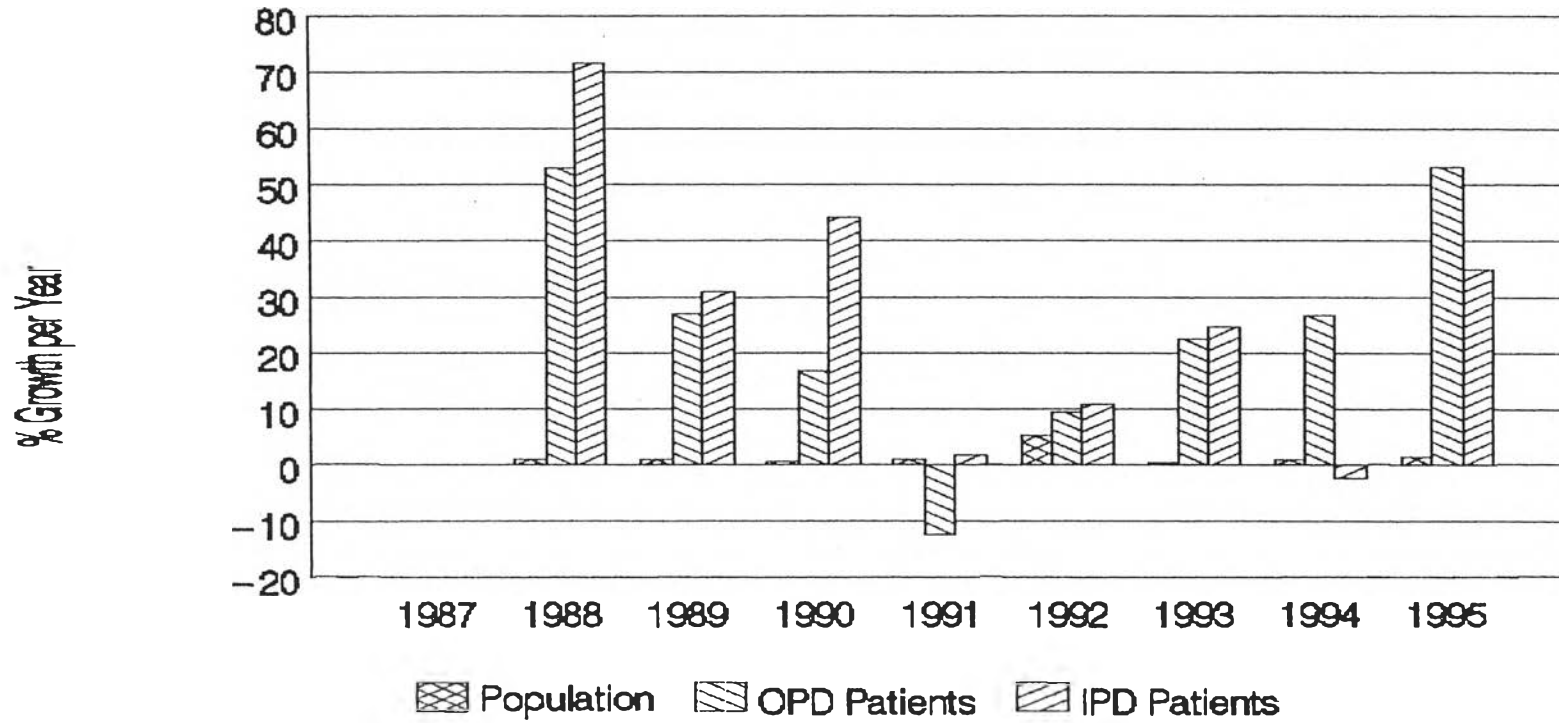


Figure 4.3.1: Comparison of Number of OPD Patients  
in Ban Paew and Krathum Baen Hospitals

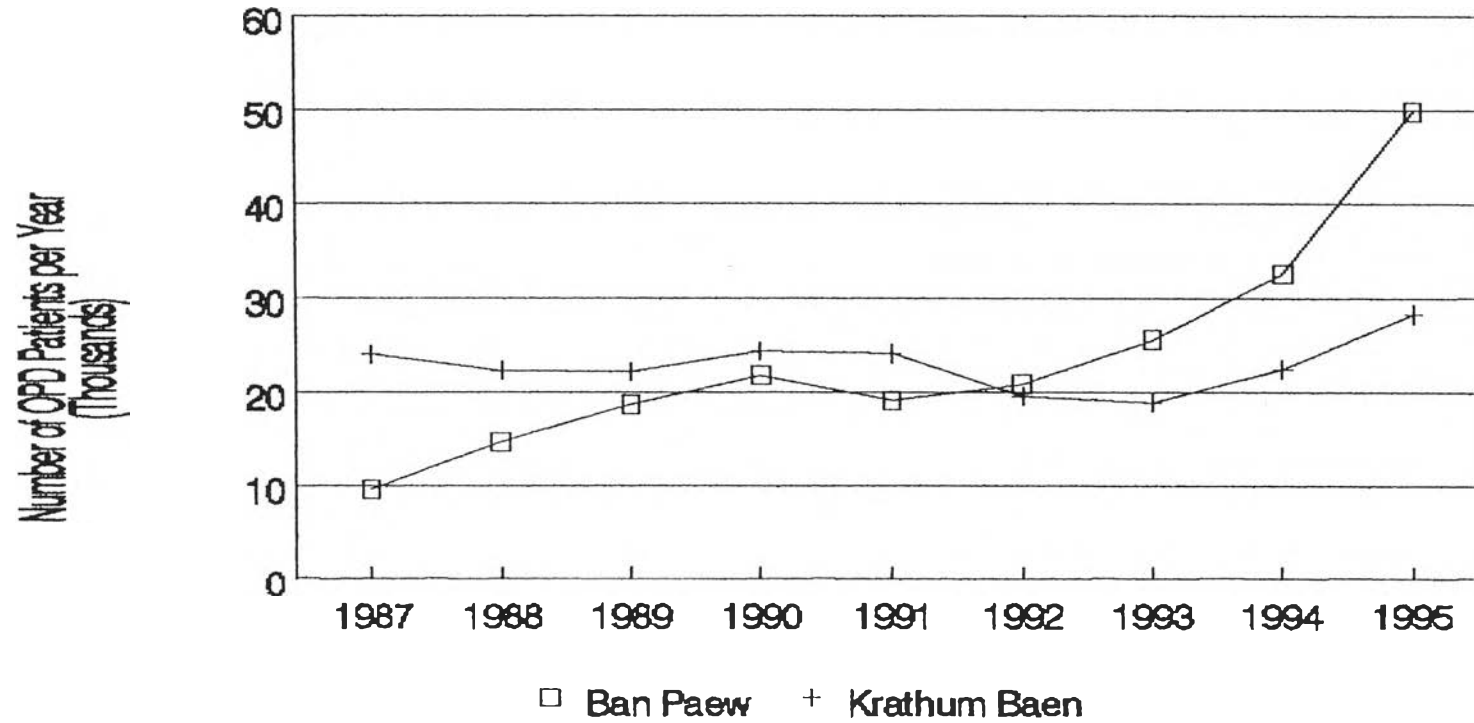




Figure 4.3.2: Comparison of Number of OPD Visits in Ban Paew and Krathum Baen Hospitals

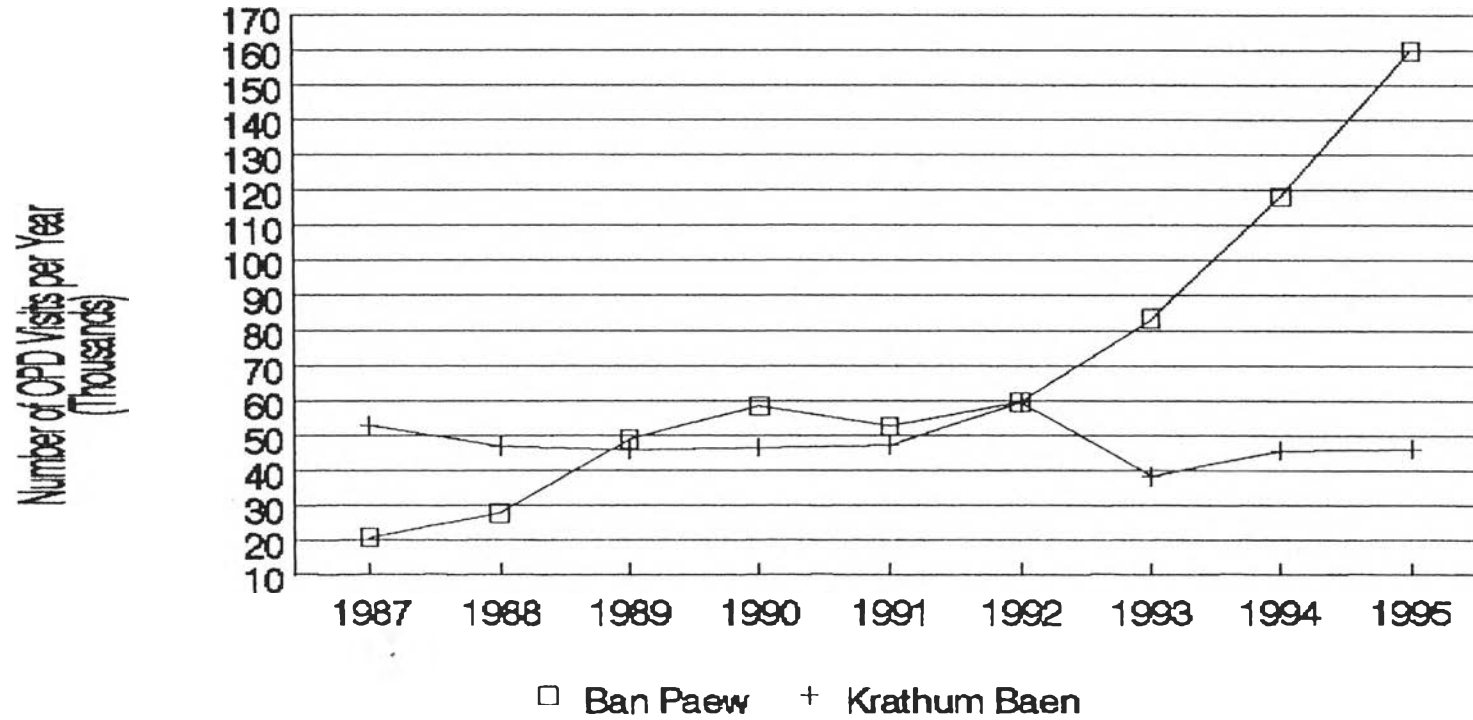


Figure 4.3.3: Comparison of Growth of Number of OPD Patients in Ban Paew and Krathum Baen Hospitals

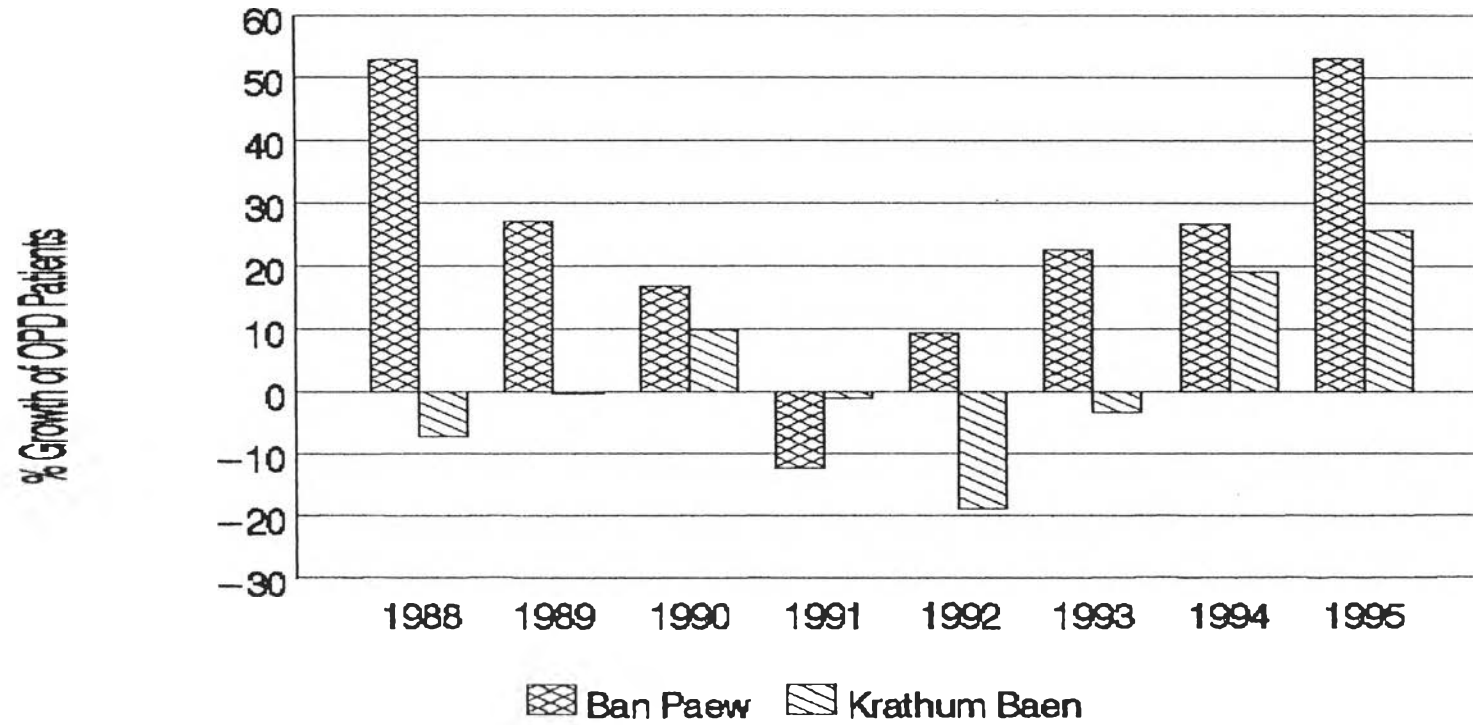


Figure 4.3.4: Comparison of Growth of OPD Visits  
in Ban Paew and Krathum Baen Hospitals

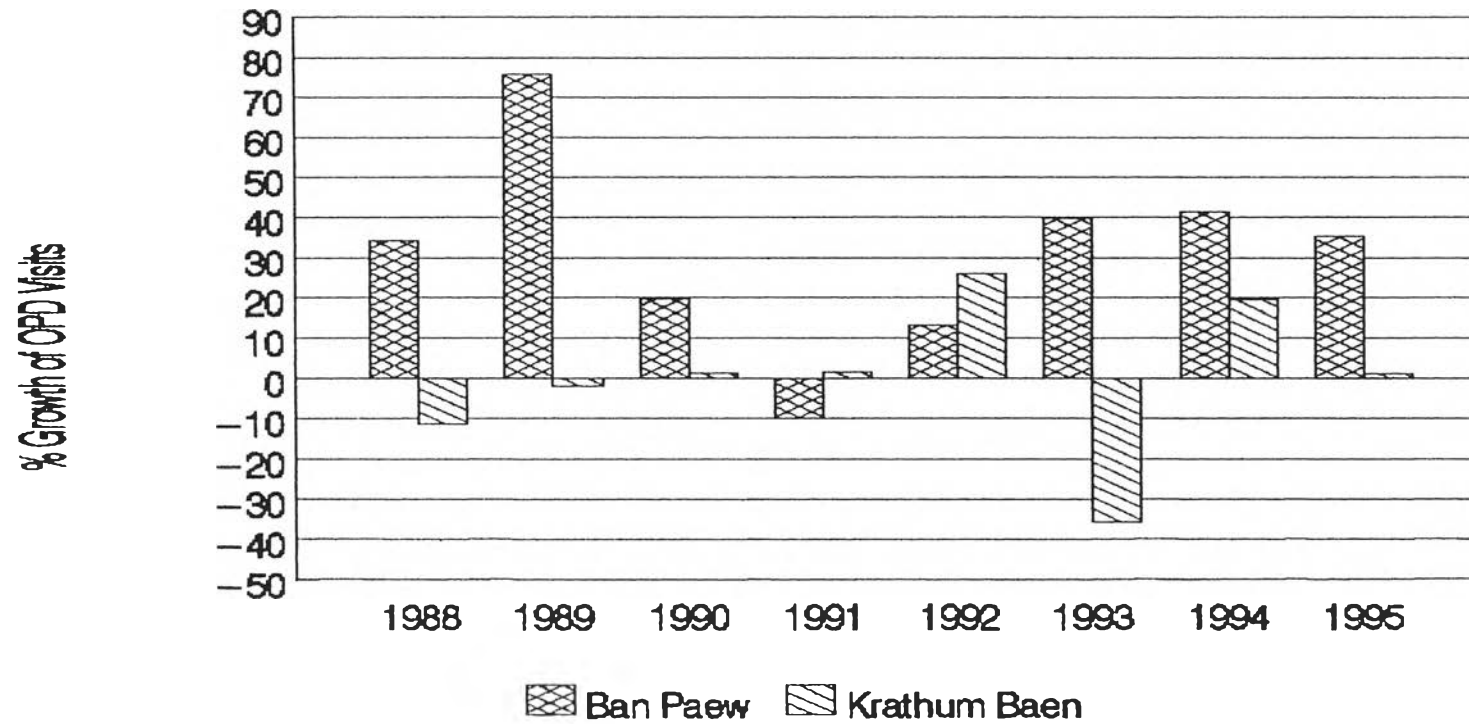


Figure 4.3.5: Comparison of Number of Inpatients in Krathum Baen and Ban Paew

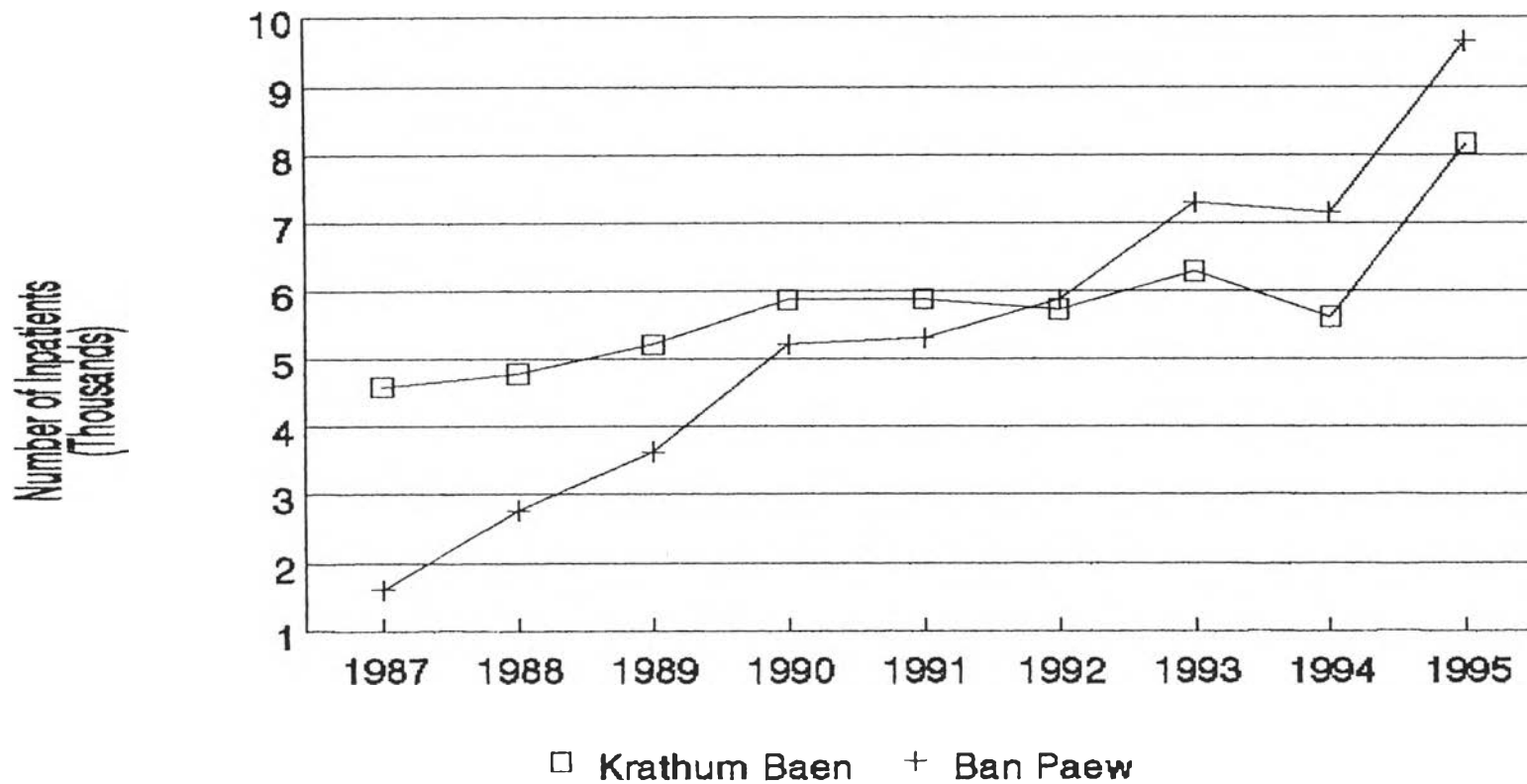


Figure 4.3.6: Comparison of Number of Inpatients Days in Krathum Baen and Ban Paew Hospital

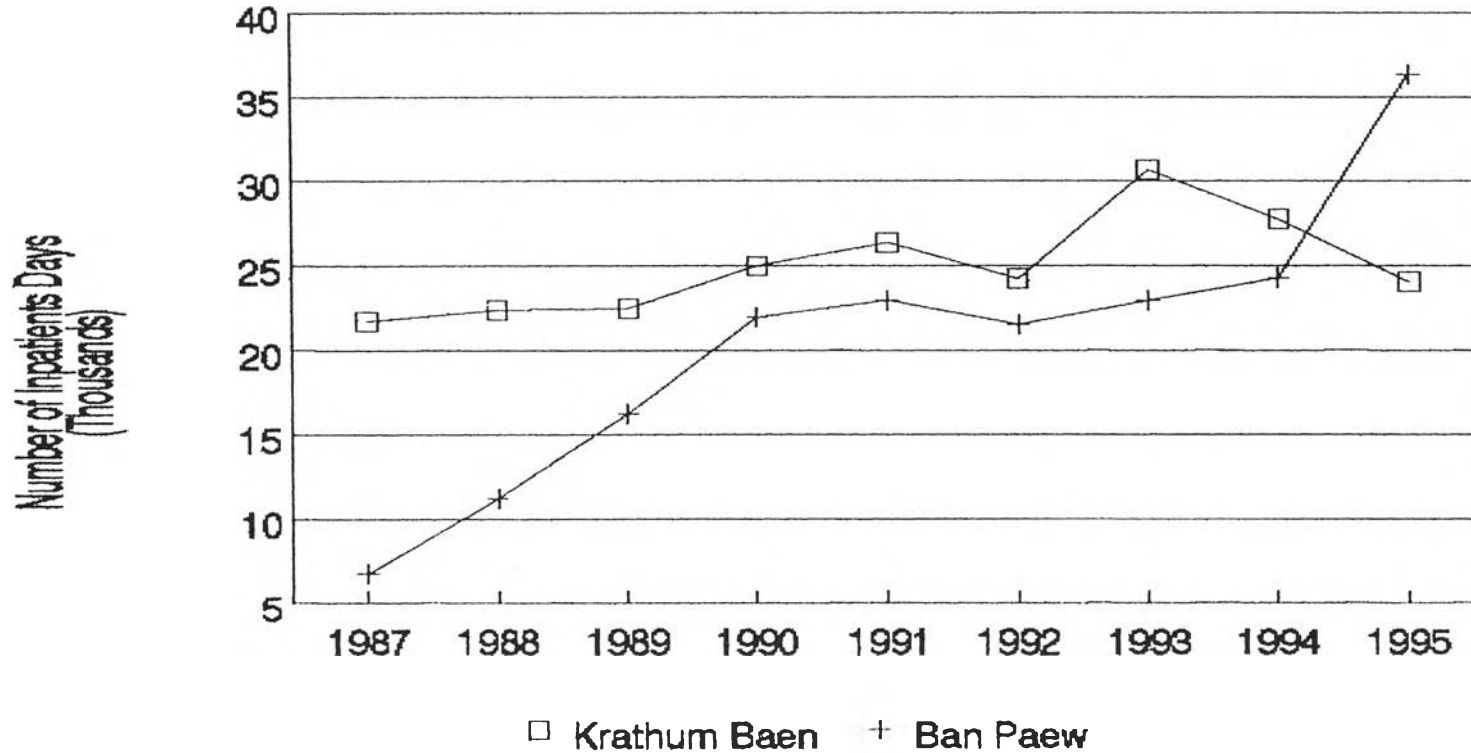


Figure 4.3.7: Comparison of Growth of Number of Inpatients in Krathum Baen and Ban Paew Hospital

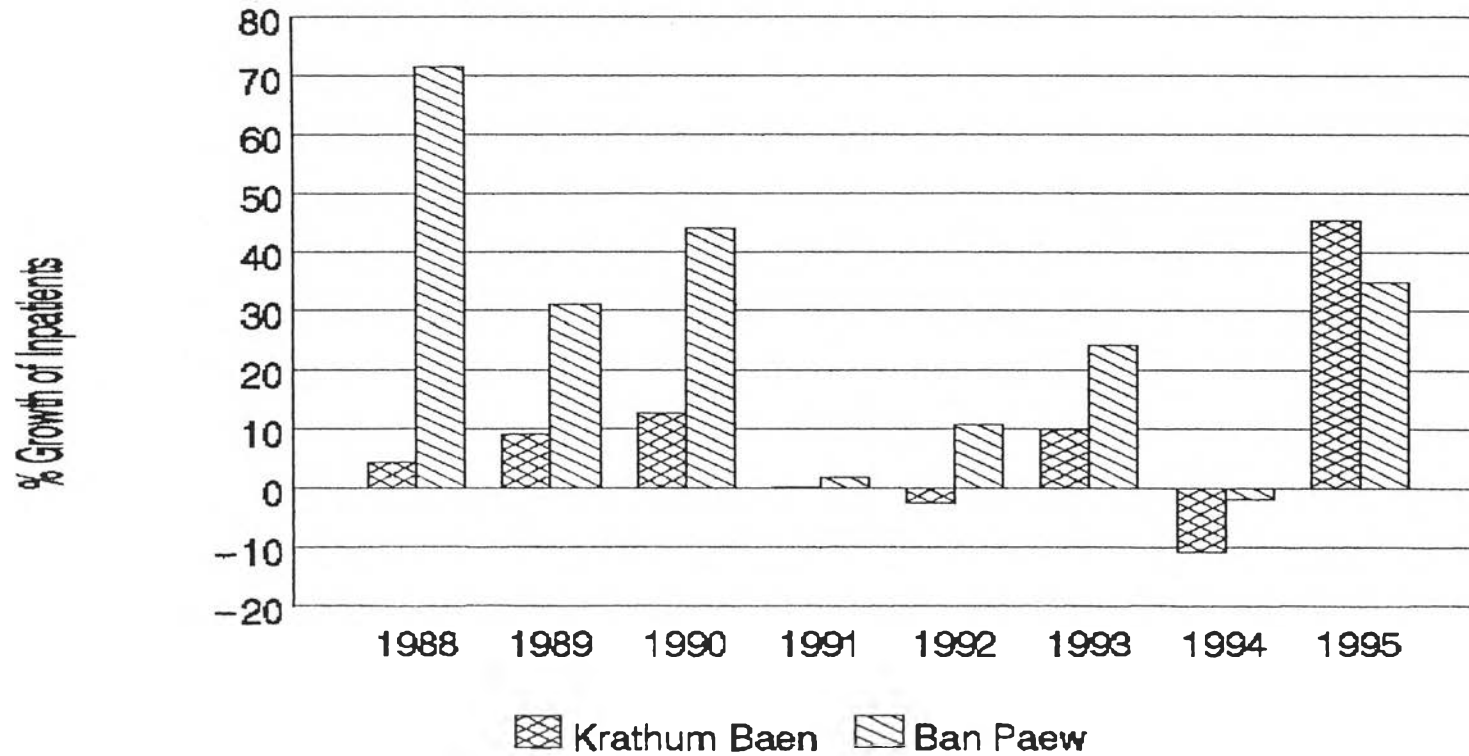
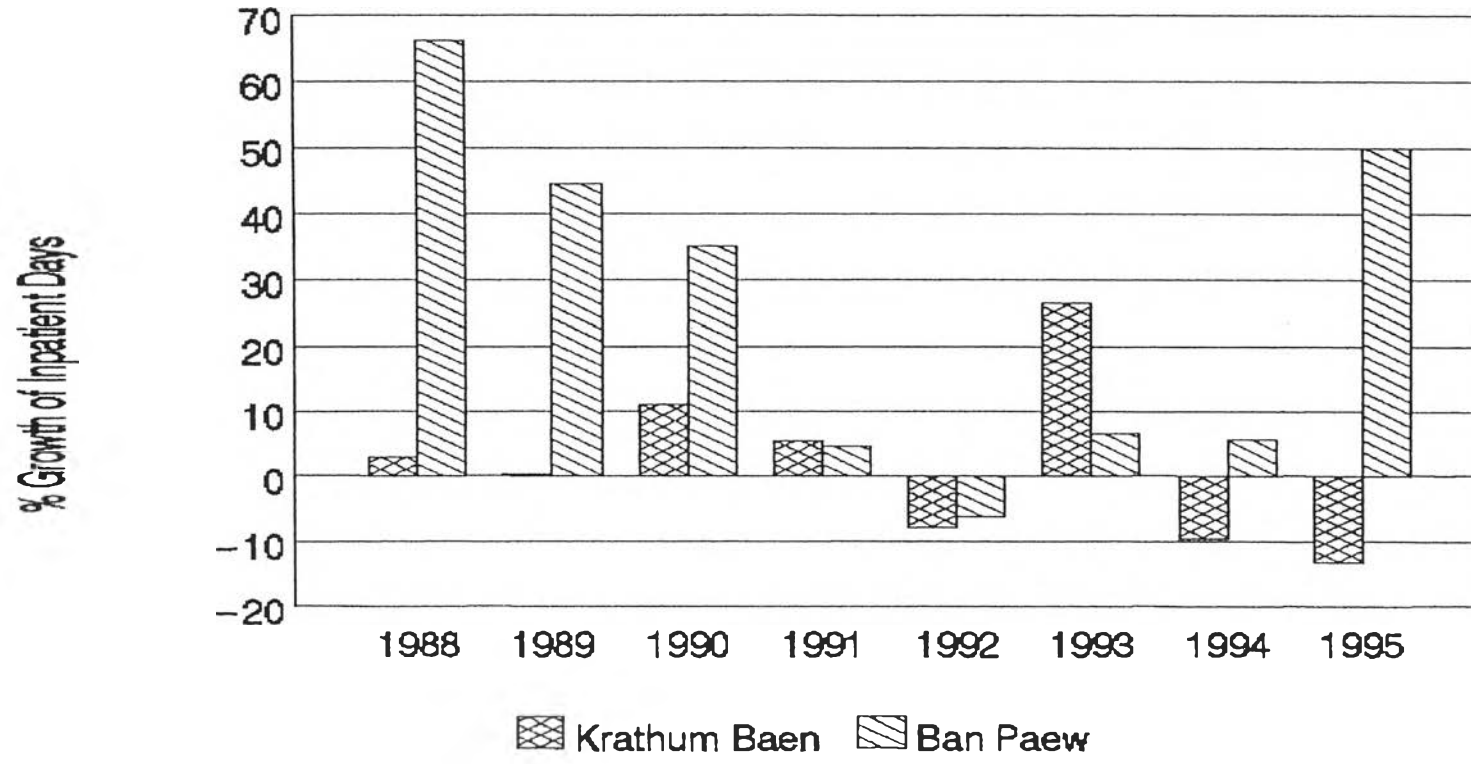
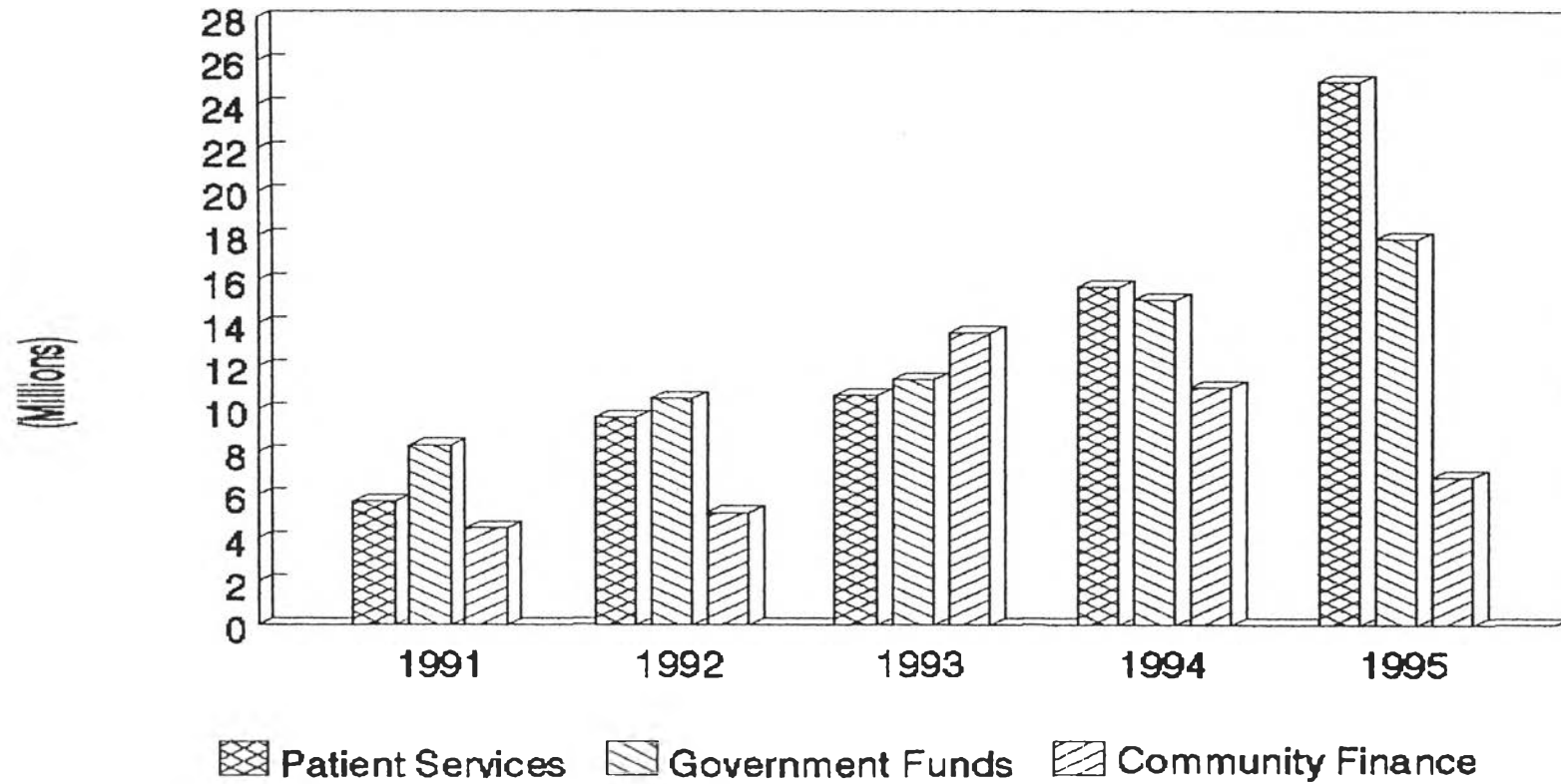


Figure 4.3.8: Comparison of Growth of Inpatients Days in Krathum Baen and Ban Paew Hospital



**Figure 4.4.1: Comparative Analysis of Three Sources of Income in Ban Paew Community Hospital**





**Figure 4.4.2: Comparison of Hospital Expenditure by Sources of Income**

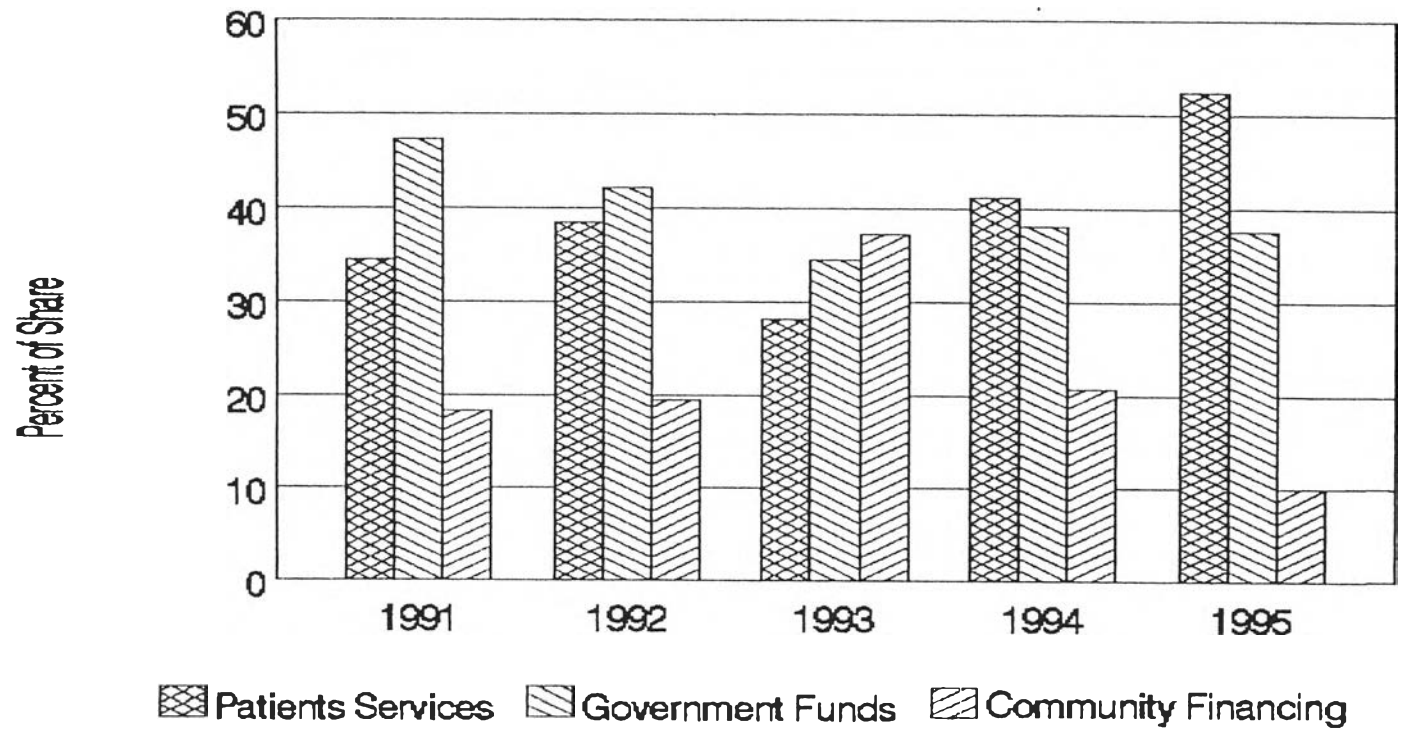


Table 4.4.2C: Government Expenditure in Ban Paew Hospital

Budget Items	1991	1992	1993	1994	1995
<b>1. Utilities –</b>	<b>160,000</b>	<b>162,000</b>	<b>271,500</b>	<b>499,200</b>	<b>619,000</b>
Water, Electricity, Telephone					
<b>2. Operational Costs</b>	<b>1,113,200</b>	<b>1,701,540</b>	<b>2,160,830</b>	<b>2,755,350</b>	<b>3,472,740</b>
2.1 Medicine	140,200	315,540	160,830	199,750	390,000
2.2 Hospital Food	250,000	200,000	n.a.	n.a.	230,000
2.3 Per diem for Staff	10,000	25,000	20,000	30,000	20,000
2.4 Transportation	3,000	1,000	10,000	20,000	n.a.
2.5 Maintenance of Equipment	25,000	70,000	50,000	100,000	20,000
2.6 Vehicle and Ambulance Maintenance	15,000	30,000	100,000	130,800	150,000
2.7 Patient Bedding, Linens etc.	70,000	80,000	100,000	300,000	300,000
2.8 Office Supplies	50,000	80,000	100,000	200,000	200,000
2.9 Medical Supplies	450,000	800,000	1,500,000	1,600,000	1,800,000
2.10 Fuel for Vehicles	100,000	100,000	120,000	155,600	203,940
2.11 Others	n.a.	n.a.	n.a.	19,200	158,800
<b>3. Special Funds</b>	<b>1,006,000</b>	<b>1,456,000</b>	<b>1,487,500</b>	<b>3,047,568</b>	<b>3,137,570</b>
3.1 Poor and War Veterans	956,000	1,090,000	1,117,500	1,848,500	n.a.
3.2 Elderly Program	50,000	366,000	370,000	793,285	n.a.
3.3 Others	n.a.	n.a.	n.a.	405,783	n.a.
<b>4. Special Projects</b>	<b>n.a.</b>	<b>n.a.</b>	<b>244,000</b>	<b>862,300</b>	<b>968,000</b>
4.1 Health For All	n.a.	n.a.	244,000	100,000	n.a.
4.3 Others*	n.a.	n.a.	n.a.	762,300	n.a.
<b>5. Staff Salaries</b>	<b>7,046,910</b>	<b>7,196,574</b>	<b>7,200,865</b>	<b>8,009,860</b>	<b>9,658,144</b>
<b>(As Percent of Total)</b>	<b>75.56</b>	<b>68.43</b>	<b>63.36</b>	<b>52.79</b>	<b>54.09</b>
<b>Grand Total</b>	<b>9,326,110</b>	<b>10,516,114</b>	<b>11,364,695</b>	<b>15,174,278</b>	<b>17,855,454</b>

n.a. = not available

\* HIV/AIDS, Mobile Clinics, Occupational Health etc.

**Figure 4.4.3: Comparison of Operational Expenditures of Ban Paew Hospital**

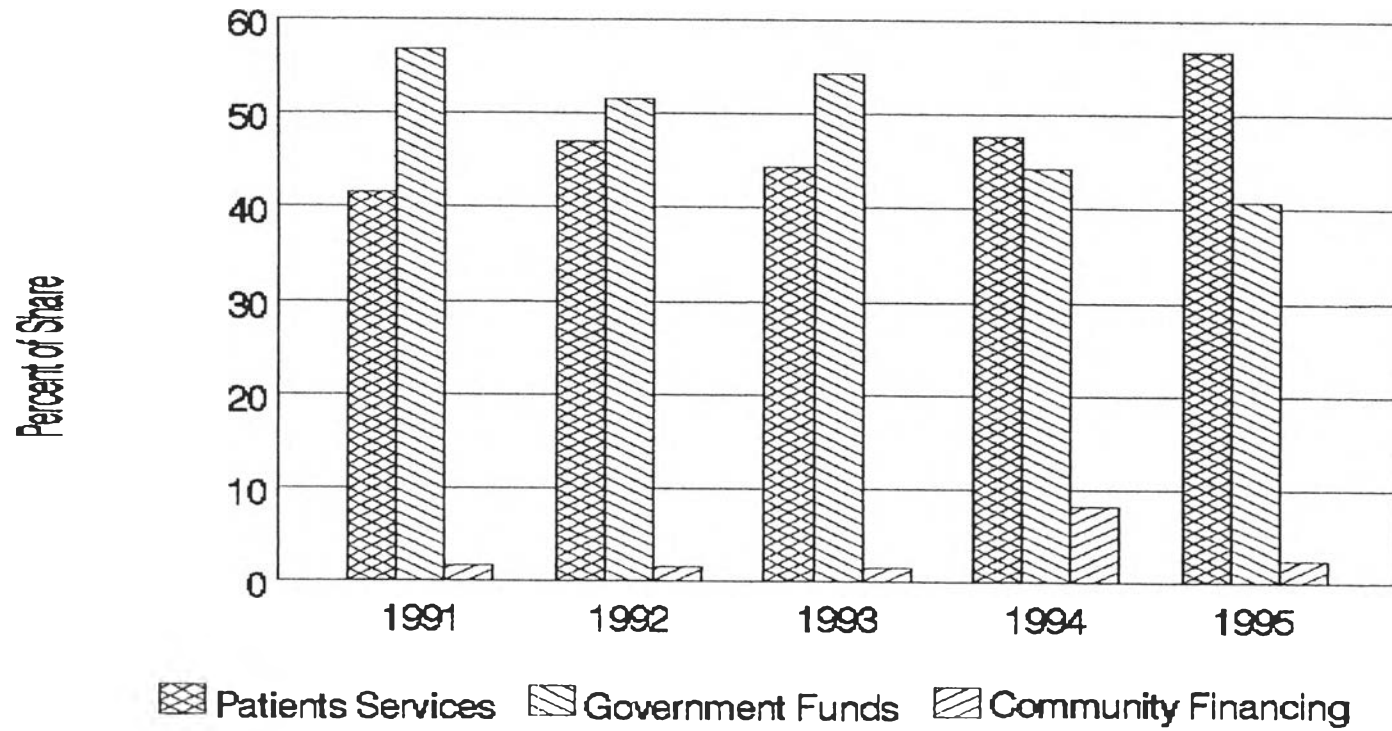


Figure 4.4.4: Comparison of Operational Expenditures (in Baht)

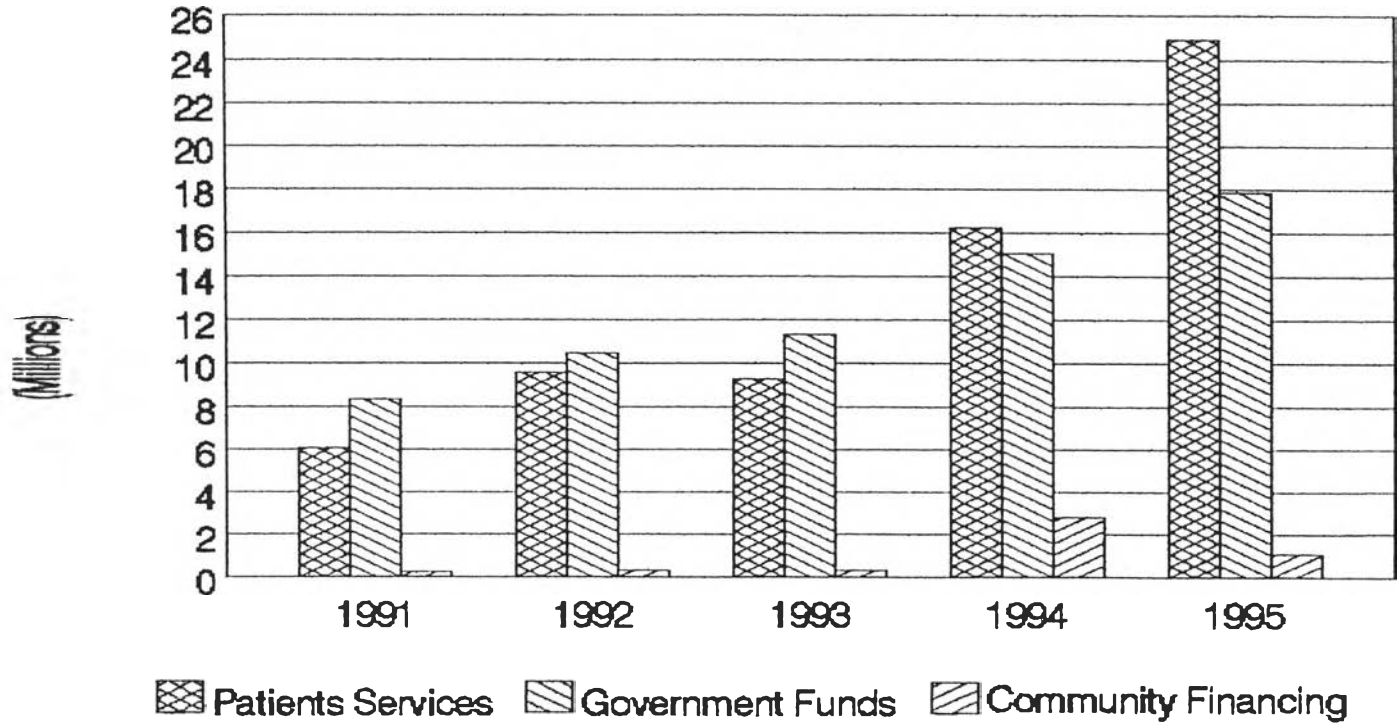
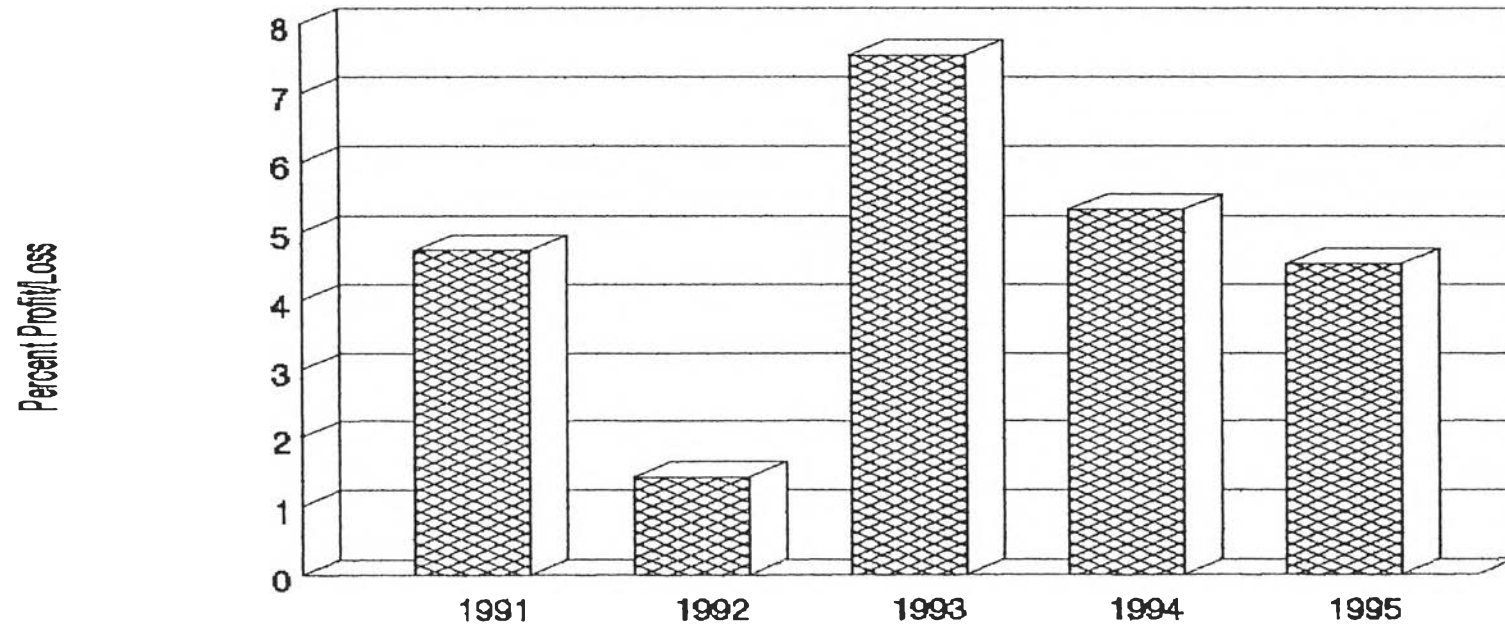


Table 4.4: Annual Income and Expenditure of Ban Paew Hospital

<b>Sources of Income</b>	<b>1991</b>	<b>1992</b>	<b>1993</b>	<b>1994</b>	<b>1995</b>	<b>ALL YEARS</b>
1. From Patients' Services	5,700,345	9,615,115	10,637,642	15,668,555	25,069,761	<b>66,691,418</b>
2. Government Contribution	8,320,110	10,516,114	11,364,695	15,074,278	17,855,454	<b>63,130,651</b>
3. Community Financing	4,456,207	5,183,485	13,563,616	11,018,694	6,846,633	<b>41,068,635</b>
<b>Total Income</b>	<b>18,476,662</b>	<b>25,314,714</b>	<b>35,565,953</b>	<b>41,761,527</b>	<b>49,771,848</b>	<b>170,890,704</b>
<b>Annual Growth of Income (%)</b>	n.a.	37.01	40.50	17.42	19.18	33.88
<b>Sources of Expenditure</b>						
1. From Patient Services	5,827,272	9,257,522	8,956,840	13,450,207	23,816,789	<b>61,308,630</b>
2. Government Funds	8,320,110	10,516,114	11,364,695	15,074,278	17,855,454	<b>63,130,651</b>
3. Community Financing	3,456,207	5,183,485	12,563,616	11,018,694	5,846,655	<b>38,068,657</b>
<b>Total Expenditure</b>	<b>17,603,589</b>	<b>24,957,121</b>	<b>32,885,151</b>	<b>39,543,179</b>	<b>47,518,898</b>	<b>162,507,938</b>
<b>Annual Growth of Expenditure (%)</b>	n.a.	41.77	31.77	20.25	20.17	33.99
<b>Annual Profit/Loss</b>	<b>873,073</b>	<b>357,593</b>	<b>2,680,802</b>	<b>2,218,348</b>	<b>2,252,950</b>	<b>8,382,766</b>
<b>Annual Profit/Loss (%)</b>	<b>4.73</b>	<b>1.41</b>	<b>7.54</b>	<b>5.31</b>	<b>4.53</b>	<b>4.91</b>

n.a. = not available

**Figure 4.4: Annual Profit/Loss in Ban Paew Hospital**



## Curriculum Vitae

Name: Shakti Ranjan Paul  
Date of Birth: January 2, 1954  
Place of Birth: Noakhali, Bangladesh  
Nationality: Bangladeshi

### Mailing Address:

#99/115, Soi - 11  
Mooban Pruksachat  
Sukhapiban - 3 Road  
Bangkapi, Bangkok 10240  
Thailand

### Educational Qualifications:

1. M.B.B.S. (MD equivalent), Chittagong University, Chittagong, Bangladesh, 1972-1978.
2. Disaster Management, Asian Institute of Technology, Bangkok, Thailand, 1987.
3. Modern Management, School of Business Studies, Singapore, 1991-1992.

### Work Experiences:

1. Medical Officer, Burmese Refugee Camp, Cox's Bazaar, Chittagong, Bangladesh, 1979.
2. Physician/Medical Coordinator, Catholic Relief Services (CRS), Songkhla and Surin, Thailand, 1981 - 1988.
3. Medical Coordinator, United Nations Border Relief Operation (UNBRO), Thailand, 1988 - 1991.
4. Deputy Field Coordinator, United Nations Border Relief Operation (UNBRO), Thailand, 1991-1992.
5. Public Health Officer, United Nations Development Programme (UNDP), Cambodia, 1992-1995.

