

## REFERENCES

- Abele, K. and Beeser, W.F. "Geology of the Muak Lek Area". Unpublished Manuscript in Files of Dept. Geol., Chulalongkorn Univ., Bangkok, 1963.
- Allum, J.A.E. in Photogeology and Regional Mapping. p. 111 Pergamon Press Ltd., Guilford, Surrey, England, 1966.
- Avery, T.E. in Interpretation of Aerial Photographs (3rd. ed.) pp. 125 - 281, Burgess Publishing Company, Minneapolis, Minnesota, 1977.
- Badgley, P.C. in Structural Method for Exploration Geologist, p. 280 Harper and Brothers Publishers Ltd., New York, 1959.
- . in Structural and Tectonic Principles; National Aeronautic and Space Administration. p. 521. A Harper International Student Reprint, New York, 1965.
- Baum, F., von Braun, E., Hahn, L., Hess, A., Koch, K.E., Kruze G., Quarch, H. and Siebenhuhner, M. "On the Geology of Northern Thailand". Hannover Beihefte Z. Geol. Jahrb., Heft 102 (1970): 1 - 24.
- Best, M.G. in Igneous and Metamorphic Petrology. pp. 35 - 221, W.H. Freeman and Company, San Francisco, California 1982.
- Billings, M.P. in Structural Geology, 3rd.ed., p. 606. Prentice-Hall Inc., Englewood Cliffs, New Jersey, 1972.

- Bloom, A.L. in Geomorphology, 2 Systematic Analysis of Late Cenozoic Landforms. p. 510. Prentice-Hall Inc., Englewood Cliffs, New Jersey, 1978.
- Borax, E. and Stewart, R.D., "Notes on the Paleozoic Stratigraphy of Northeastern Thailand". A Paper Prepared for Econ. Comm. Asia and Far East Meeting in Bangkok, Thailand. ECAFE, p. 17, August 1966.
- Brown, G.F., Buravas, S., Charaljavanaphet, J., Jalichandra, N., Johnston, W.D. Jr., Sethaput, V. and Taylor, G.C. Jr. "Geologic Reconnaissance of the Mineral Deposit of Thailand" U.S. Geol. Surv. Bull. No. 984 pp. 96 - 114, Washington, D.C., 1951.
- Bunopas, S. and Vella, P. "Late Palaeozoic and Mesozoic structural evolution of northern Thailand, A plate Tectonic Model". Proc. 3rd Regional Conf. Geol. Min. Res. S.E. Asia. pp. 113 - 140. Bangkok, 1978.
- Bunopas, S. "Paleogeographic history of Western Thailand and adjacent parts of Southeast Asia-A plate-tectonics interpretation". Ph. D. Thesis, Victoria University of Wellington, New Zealand, 1981 (Reprinted 1982 as Geological Survey Paper No. 5, Dept. Min. Resources, Thailand).
- Bunopas, S. and Vella, P. "Opening of the Gulf of Thailand-Rifting of Continental Southeast Asia and Late Cenozoic Tectonics". J. Geol. Soc. Thailand. 6(1983) : 1 - 12.
- Burton, C.K. "The Tectonic Framework of Mainland Southeast Asia". Proc. of the Conf. on Applications of Geol. and the National Development. pp. 255 - 268. Dept. Geol. Chulalongkorn Univ., Bangkok. November 1984.

- Butler, R.W.H. "A Structural Analysis of the Moine Thrust Zone between Loch EriBoll and Foinaven, NW Scotland". J. of Structural Geol. 4(1), (1982a) : 19 - 29.
- . "The Terminology of Structures in Thrust Belts". J. of Structural Geol. 4(3), (1982b) : 239 - 256.
- Campbell, K.V., Angkatavanich, N., Choldumrongul, S., Jaidee, S., Mangklaviraj, V., Parkpoom, S., Wongwanich, T., Busaracome, S., Cosiri, R., Kuptawanich, P., Nakapadungrat, S., Saw, S., and Silpanon, W. "An Outline of the Geology of the Thap Kwang Area, Changwat Saraburi, Thailand". Unpublished Report Compiled from Field Work II, Dept. Geol., Fac. Sci., Chulalongkorn Univ., Bangkok, 1972.
- Chantaramee, S. "The Analysis and Interpretation of Minor Folds Developed in the Mae Tha Group at Ban Cham Bon, Lamphun, Thailand". J. Geol. Soc. Thailand. 4(1 - 2), 1981 : 37 - 47.
- Chuaviroj, S. "Structural Analysis of ST. Gervais Area, Montagne Noire; France". Master's Thesis, ITC, Delft, The Netherlands, 1976.
- Comviravong, N. "Detailed Structural Geologic Study along Highway 21 from Km. 0 to Km. 12, Changwat Saraburi Central Thailand". Unpublished Fieldwork III. Report, Dept. Geol. Chulalongkorn Univ., Bangkok, 1985.
- Coward, M.P. "Thrust Tectonics, Thin Skinned or Thick Skinned, and the Continuation of Thrusts to Deep in the Crust". J. of Structural Geol. 5(2), (1983) : 113 - 123.

- . "The Strain and Textural of Thin-Skinned Tectonic Zones :  
Examples from the Assynt Region of the Moine Thrust Zone, NW  
Scotland". J. of Structural Geol., Special Issue. 6(1/2),  
(1984) : 89 - 99.
- Davis, G.H. in Structural Geology of Rocks And Regions. p. 492. John  
Wiley & Sons Inc., Canada, 1984.
- Dawson, O.T. "Note on Deformation Fabrics of the Permian Limestone  
from Central Thailand". J. Geol. Soc. Thailand. Geol. and  
Min. Resources of Thailand, Special Issue for III GEOSEA. 3(1),  
(1978a) : 1 - 14.
- . "Deposition and Diagenetic Fabrics of Permian Limestone  
from Saraburi, Central Thailand". Proc. 3rd. Regional Conf.  
Geol. and Min. Resources of Southeast Asia. pp. 47 - 60.,  
Bangkok, November, 1978b.
- Dheeradilok, P. "A Detailed Study of the Deformational History of  
Part of the Rockerville Area, Black Hills, South Dakota".  
Master's Thesis, South Dakota School of Mines and Technology,  
Rapid City, South Dakota, 1972.
- Dheeradilok, P., Thiramonkol, N., Vijarnsorn, P. and Sinsakul, S.  
"Quaternary Geology and Geomorphology of the Central Plain  
and Eastern Thailand". Published as Part of the Tour Guide  
for First Symposium on Geomorphology and Quaternary Geology of  
Thailand. p. 7 - 13. Bangkok, Thailand, 1983.

- Dott, R.H. Jr. "Wacke, Gray Wacke and Matrix - What Approach to Immature Sandstone Classification ?" J. Sed. Petro. 34 (1964) : 625 - 632.
- Dunbar, C.O. and Rodgers J. in Principles of Stratigraphy. pp. 97 - 167, John Wiley & Sons Inc., New York, 1957.
- Fletcher, C.J.N. in "Structures in Folded Rocks,". p. 39. London Ministry of Overseas Development, England 1978.
- Fleuty, M.J. "The Description of Folds". Geol. Assoc. Proc. 75 (1964) : 461 - 492.
- Folk R.L. "Practical Petrographic Classification of Limestones". Bulletin of The American Association of Petroleum Geologists, Vol.43 No. 1 pp. 1 - 38, January 1959.
- . in Petrology of Sedimentary Rocks. pp. 120 - 127. Hemphill's Book Store, Austin, Texas, 1968.
- Geological Society of London. "Thrust and Nappe Tectonics". Blackwell Scientific Publications, Bath, England 1981.
- Ghosh, S.K. and Ramberg, H. "Buckling Experiments on Intersecting Fold Patterns" Tectonophysics. 5(1968 ) : 89 - 105.
- Ghosh, S.K. "Experiments of Buckling of Multilayers which Permit Interlayer Gliding" Tectonophysics. 6(3), (1968 ) : 207 - 249.
- Greensmith, J.T. in Petrology of the Sedimentary Rocks. pp. 124 - 182, George Allen & Unwin Ltd., London 1978.

- Kobayashi, T. "Notes on the Geologic History of Thailand and Adjacent Territories". Japanese J. Geol. Geog. 32(1960) : 79 - 84.
- Krumbein, W.C. and Sloss, L.L. in Stratigraphy and Sedimentation 2nd. ed., pp. 150 - 330, W.H. Freeman and Company, San Francisco, 1963.
- LaMoreaux, P.E., Javanaphet, J.C., Jalichan, N., Na Chiengmai, P., Bunnag, D., Thaviori, A. and Rokprathum, C. "Reconnaissance of the Geology and Ground Water of the Khorat Plateau, Thailand". U.S. Geol. Surv. Water Supply Pap. No. 1429, Washington, D.C., 1959.
- Lee, W. "Reconnaissance Geological Report of the Khorat Region, Provinces of Nakhon Rajasima, Udon, Roi - Et and Ubon, Siam". Unpublished Manuscript in Files of Geol. Surv. Div., Dept. Min. Resources, Bangkok, 1923.
- . "Outline of the Geology of Siam, with Reference to Petroleum". Bull. Amer. Assoc. Petroleum Geologists". Vol. 11, No. 4 pp. 407 - 415, 1927.
- Mathews, R.K. in Dynamic Stratigraphy, An Introduction to Sedimentation and Stratigraphy. p. 489. Prentice - Hall Inc., Englewood Cliffs, New Jersey, 1984.
- Meteorological Department "Mean Annual and Monthly Rainfall over Thailand". Roy. Thai Surv. Dept., Office of the Prime Minister, Bangkok, 1974.

- \_\_\_\_\_. "Mean Annual and Monthly Temperatures Over Thailand".  
Roy. Thai Surv. Dept., Ministry of Communications, Bangkok,  
1981.
- Miller, V.C. in Photogeology. p. 248. McGraw - Hill Book Company Inc.,  
New York, 1961.
- Muangnoicharoen, N. "The Geology and Structure of a Portion of the  
Northern Piedmont, East Central Alabama". Master's Thesis,  
Department of Geology and Geography, Graduate School, The Uni-  
versity of Alabama, U.S.A., 1975.
- Oldew, J.S. "Kinematics of Late Mesozoic Thrusting, Pilot Mountains,  
West - Central Nevada, U.S.A." J. of Structural Geol. 3(1),  
(1981) : 39 - 49.
- Paterson, M.S. and Weiss, L.E. "Experimental Deformation and Folding  
in Phyllite". Geol. Soc. Amer. Bull. Vol. 77 pp. 343 - 374,  
New York, 1966.
- Pettijohn, F.J. "Classification of Sandstone". J. Geology. 62(1954) :  
360 - 365.
- \_\_\_\_\_. in Sedimentary rocks, 2<sup>nd</sup> ed., p. 718. Harper & Row  
Publishers, New York, 1957.
- \_\_\_\_\_. in Sedimentary Rocks, 3<sup>rd</sup> ed. pp. 194 - 259, Harper & Row  
Publishers Inc., New York, 1975.
- Potter, P.E., Maynard, J.B. and Wayne, A.P. in Sedimentology of Shale,  
Study Guide and Reference Source. pp. 12 - 17, Springer -  
-Verlag, New York, 1980.

- Price, N.J. in Fault and Joint Development in Brittle and Semi Brittle Rock. p. 176. Pergamon Press, London, 1981.
- Pitakpaivan, K. "The Fusulinacean Fossils of Thailand, Part I : Fusulines of the Ratburi Limestone of Thailand. Mem. Fac. Sci. Kyushu Univ., Series D, Geology. 17(1) 1965 : 47 - 68.
- Pitakpaivan, K., Ingavat, R. and Pariwatvorn, P. "Fossils of Thailand". Geol. Surv. Mem. 3, Vol. 1 p. 69. Dept. Min. Resources of Thailand, 1969.
- Ragan, M.D. in Structural Geology, An Introduction to Geometrical Techniques, 2<sup>nd</sup> ed., p. 2q8. John Wiley & Sons Inc., 1973.
- Ramsay, J.G. "The Geometry and Mechanics of Formation of Similar Type Folds". J. Geol. 70(3), (1962a) : 309 - 329.
- . "Interference Patterns Produced by the Superposition of Folds of Similar Type". J. Geol. 70(4), (1962b) : 466 - 481.
- . in Folding and Fracturing of Rocks. p. 568. McGraw-Hill Book Company, New York, 1967.
- Remote Sensing Division of National Research Council & Planning Division of Department of Highways". Highway Map Central Region by Using Landsat Imagery". A scale 1 : 1,000,000 Bangkok, 1981.
- Roberts, L.J. in Introduction to Geological Maps and Structures. p. 332. Pergamon Press, Oxford, 1982.
- Selley, R.C. in An Introduction to Sedimentology. pp. 77 - 91, Academic Press Inc. Ltd., London, 1982.



- Siddans, A.W.B. "Arcuate Fold and Thrust Patterns in the Subalpine Chains of Southeast France". J. of Structural Geol. 1(2), (1979) : 117 - 126.
- Stringer, P. and Treagus, J.E. "Non - axial Planar S1 Cleavage in the Hawick Rocks of the Galloway Area, Southern Uplands, Scotland". J. of Structural Geol. 2(3), (1980) : 317 - 331.
- Takaya Y. and Thiramongkol, N. "Chao Phraya Delta of Thailand, Asian Rice - Land Inventory". A Descriptive Atlas Number 1, Center for Southeast Asian Studies, Kyoto Univ., 1982.
- Thiramongkol, N. "Review of Geomorphology of Thailand". Proceedings of the First Symposium on Geomorphology and Quaternary Geology of Thailand: p. 6 - 23. Dept. Geol., Chulalongkorn Univ., Bangkok, Thailand, 1983.
- . "Geomorphology of the Lower Central Plain, Thailand". Proceedings of the Third Working Group. Meeting of Geomorphology of River and Coastal Plains. pp. 13 - 25. Dept. Geol., Chulalongkorn Univ., Bangkok and CCOP, Bangkok, 1984.
- Tittirananda, O. "Aspects of Stratigraphy and Palaeontology of the Permian Ratburi Limestone of Saraburi, Central Thailand". Ph.D. Thesis, University of London 1976.
- Toriyama, R. and Sugi, T., "Permian Fusulinids from Central Thailand". Mem. of the Fac. Sci., Kyushu Univ., Series D, 9(1), (1959) : 17 - 32.
- Turner, F.J. and Weiss, L.L. in Structural Analysis of Metamorphic Tectonites. p. 545. McGraw - Hill Book Company Inc., New York, 1963.

- Weiss, L.E. in The Minor Structures of Deformed Rocks. A Photographic Atlas, p. 431. Springer - Verlag, Berlin, Germany, 1972.
- Whitten, E.H.T. in Structural Geology of Folded Rocks. pp. 130 - 263, Rand McNally & Company, Chicago, 1966.
- Wielchowsky, C.C. and Young, J.D. "Regional Facies Variations in Permian Rocks, of the Petchabun Fold and Thrust Belt, Thailand". Proc. of the Conf. on Geology and Mineral Resources Development of the Northeast, Thailand, pp. 40 - 55. Dept. Geol., Khon Kaen Univ., Khon Kaen, November, 1985.
- Wilcox, R.E., Harding, T.P. and Sleely, D.R. "Basic Wrench Tectonics". Bull. Amer. Assoc. Petro. Geol., Vol. 57, no. 1 pp. 74 - 69, 1973.
- Williams, H., Turner, F.J. and Gilbert, C.M. in Petrography. p. 406. W.H. Freeman and Company, San Francisco, 1955.
- Williams, G.D. and Chapman, T.J. "The Geometrical Classification of Noncylindrical Folds". J. of Structural Geol. 1(3), (1979) : 181 - 185.
- Wilson, G. in Introduction to Small - Scale Geological Structures. p. 128. George Allen & Unwin (Publishers) Ltd., London, 1982.
- Workman, D.R. "Tectonic Evolution of Indochina". J. Geol. Soc. Thailand. 1(1 - 2), (1975) : 3 - 11.



ศูนย์วิทยทรัพยากร  
จุฬาลงกรณ์มหาวิทยาลัย

Appendix AThe Maps of Field Observed Information

The following maps illustrate the observed raw data, from where the interpretation of the structures in the entire study area was drawn.



ศูนย์วิทยทรัพยากร  
จุฬาลงกรณ์มหาวิทยาลัย

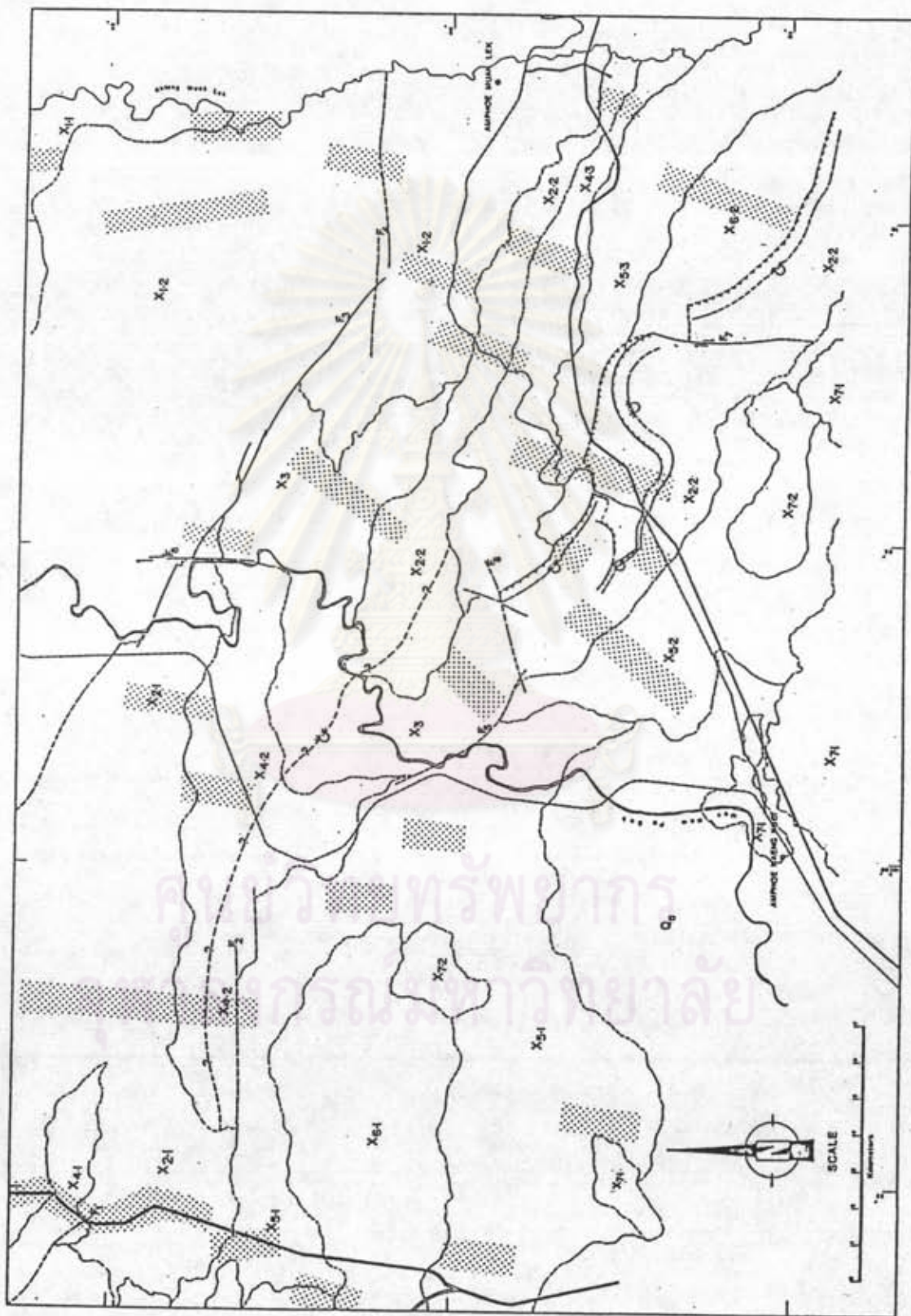


Figure 77 The locations of the sedimentary sections.

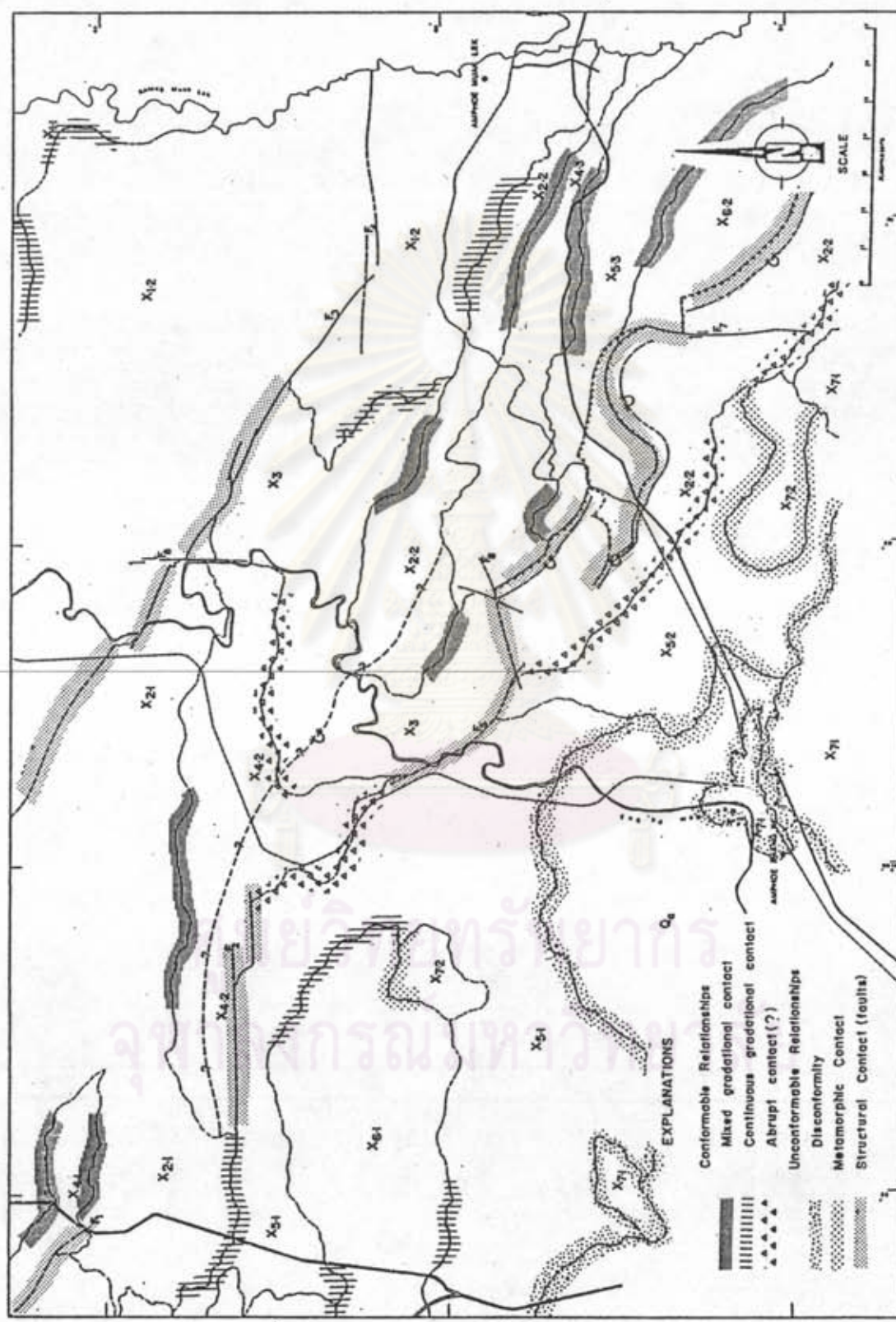


Figure 78 The contact relationship between the successive sedimentary units.

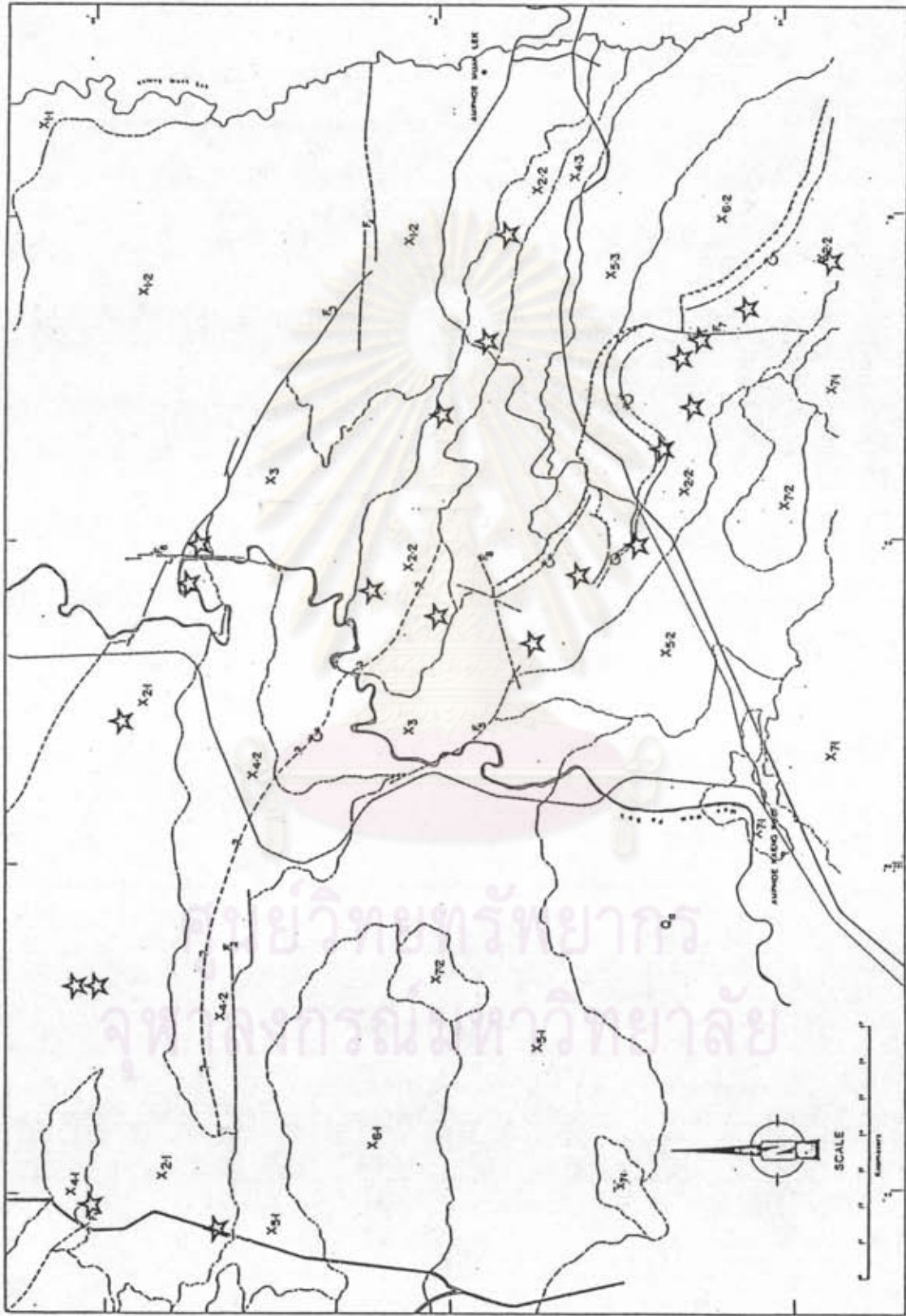


Figure 79 Distributions of dolomitic biosparite (★) in X2.1 and X2.2 members.

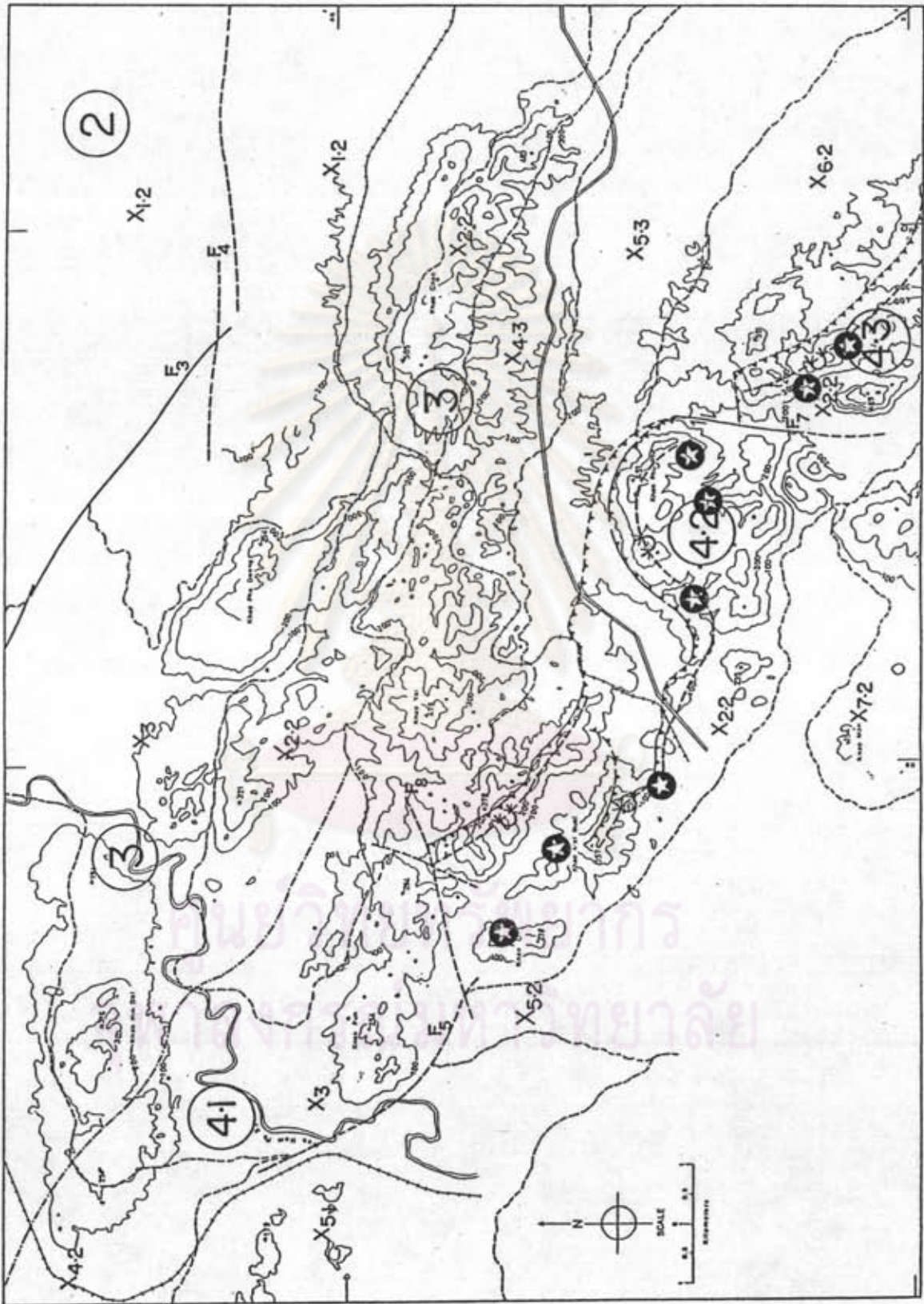


Figure 80 Distributions of tuff layers (★) in X2.2 member.



## Appendix B

### Localities of Several Rock Types

The hand-specimens were collected from several localities, many of which had a thinsection be prepared for a petrographic study. The followings are some of the localities of the rock types, with the thinsections. The rest are left out intensionally since they only supply a repetitive information for the stratigraphic corretlation.

Sample number	Rock name	Grid reference	Map sheet
1. <u>Xl.1 Member</u>			
850321078	Micrite	34063137	5238 III
851018185	Pseudosparite	36423169	5238 III
850325095	Shale	19393168	5238 III
851018186	Sublith-arenite, Graywacke	32463152	5238 III
850407119	Biosparite	35503177	5238 III
850412132	Micrite	33423196	5238 III
850524180	Pseudosparite	29443201	5238 IV
850325093	Shale	37203202	5238 IV
850524178	Subgraywacke, Graywacke	29433221	5238 IV
850524179	Biosparite	27363223	5238 IV
850325094	Micrite	31663190	5238 IV

Sample number	Rock name	Grid reference	Map sheet
---------------	-----------	----------------	-----------

## 2. X1.2 Member

850408124	Slaty shale	32372275	5238 III
850408123	Shale	35422235	5238 III
850824129	Subarkose	35172691	5238 III
850408121	Biosparite	38332417	5238 III
850509163	Biosparite	39082458	5238 III
850416140	Graywacke, Subgraywacke	34202972	5238 III
850509164	Subarkose	35823014	5238 III
850416141	Dolomitic biosparite	36942408	5238 III

## 3. X2.1 Member

850321079	Mudstone	13263278	5138 I
851017175	Micrite	12943066	5138 II
850326096	Pseudosparite	11473003	5138 II
850524181	Biomicrite	04333080	5138 II
850417142	Pelmicrite	05402878	5138 II
850417143	Dolomitic biosparite	05343140	5138 II
850326097	Biosparite	10163177	5138 I
850804127	Intramicrorite (?)	07333046	5138 I
850804128	Biopseudosparite	06443033	5138 II
850321080	Mudstone	06272854	5138 II
851016173	Biomicrite	15443182	5238 IV
851016174	Pelmicrite	15703044	5238 III
850326097	Dolomitic biosparite	16433070	5238 III

Sample number	Rock name	Grid reference	Map sheet
4. <u>X2.2 Member</u>			
850510167	Biosparite	39901794	5238 III
850414136	Dolomitic biosparite	37171768	5238 III
850510168	Dolomitic biosparite	40831580	5238 III
850420154	Pseudosparite	24061786	5238 III
850420155	Micrite	32242074	5238 III
850721121	Biomicrite	31611207	5238 III
850721122	Biomicrite	29981725	5238 III
850721123	Biomicrite	31801210	5238 III
850722124	Pelmicrite	28011746	5238 III
850328100	Dismicrite	21531944	5238 III
851001191	Crystal tuff	24141728	5238 III
851001192	Lithic tuff, Crystal tuff	31241372	5238 III
851001193	Vitric Crystal tuff	21561958	5238 III
5. <u>X3 Member</u>			
850321081	Micrite	25842552	5238 III
850421156	Biomicrite	25662433	5238 III
850413135	Biomicrite	25742642	5238 III
850421157	Biomicrite	25742406	5238 III
850327098	Pseudosparite	17742653	5238 III
850409125	Biosparite	19372644	5238 III
850510165	Micrite	27432663	5238 III
850409126	Pseudosparite	23542574	5238 III
850327099	Biosparite	21372563	5238 III

Sample number	Rock name	Grid reference	Map sheet
6. <u>X4.1 Member</u>			
850827137	Micrite	05443340	5138 I
850827138	Pseudosparite	06213233	5138 I
850827139	Biomicrite	09203197	5138 I
851015166	Dismicrite	07433264	5138 I
851015167	Calcareous shale	05663278	5138 I
850330103	Calcareous siltstone	06213230	5138 I
851014162	Mudstone	06443321	5138 I
851015168	Quartz wacke, Lithic wacke	07433262	5138 I
851014165	Micrite	05443236	5138 I
851016171	Pseudosparite	06373266	5138 I
850331104	Biomicrite	08443261	5138 I
851014163	Dismicrite	07333266	5138 I
7. <u>X4.2 Member</u>			
850825131	Micrite	12442891	5138 II
850329102	Pseudosparite	13442943	5138 II
850722125	Biomicrite	18432826	5238 III
850415138	Pseudosparite	16442777	5238 III
850511169	Mudstone	15562943	5238 III
850511170	Calcareous shale	16442870	5238 III
850322082	Micrite	14782851	5138 II
850825132	Pseudosparite	08012843	5138 II
850415139	Biomicrite	10442836	5138 II
850825132	Pseudosparite	22432746	5238 III
850329101	Mudstone	14552837	5138 I
850825133	Calcareous shale	11302940	5138 I

Sample number	Rock name	Grid reference	Map sheet
8. <u>X4.3 Member</u>			
850418145	Biomicrite	32171958	5238 III
850418146	Biomicrite	35071806	5238 III
850923158	Micrite	24332061	5238 III
850401106	Pseudosparite	27412066	5238 III
850411129	Pseudosparite	32931944	5238 III
850901140	Quartz wacke, Lithic wacke	28262671	5238 III
850901141	Shale	27432056	5238 III
850323088	Porcellanite	33421935	5238 III
850901142	Micrite	27282043	5238 III
850901143	Biosparite	24362172	5238 III
850323089	Pseudosparite	36331756	5238 III
850923160	Quartz wacke, Lithic wacke	37211733	5238 III
850401105	Shale	34361854	5238 III
850923161	Porcellanite	33211936	5238 III
9. <u>X5.1 Member</u>			
850525182	Chert	04172706	5138 II
850402107	Shale	05442633	5138 II
850410127	Porcellanite	06472053	5138 II
850525183	Micrite	12441930	5138 II
850402108	Pseudosparite	10112174	5138 II
850525184	Biomicrite	08371738	5138 II
850322083	Chert	10031760	5138 II
850410128	Shale	16532078	5238 III



Sample number	Rock name	Grid reference	Map sheet
9. <u>X5.1 Member</u>			
850323087	Porcellanite	11442733	5138 II
850525185	Micrite	13262154	5138 II
850422158	Pseudosparite	14442156	5138 II
850422159	Biomicrite	16722377	5238 III
10. <u>X5.2 Member</u>			
850616194	Calcareous shale	20311747	5238 III
850403112	Slaty shale	21331737	5238 III
850615191	Micrite	22441510	5238 III
850522174	Pseudosparite	21371536	5238 III
850522175	Biosparite	23411708	5238 III
850403109	Biomicrite	21631355	5238 III
850922154	Shale	20311778	5238 III
850922155	Chert	22431750	5238 III
850902144	Graywacke	22431750	5238 III
850902146	Slaty shale	25441436	5238 III
850403111	Shale	21081543	5238 III
851016169	Chert	19341704	5238 III
851016170	Quartz aretite, Graywacke	20471756	5238 III

Sample number	Rock name	Grid reference	Map sheet
11. <u>X5.3 Member</u>			
850322084	Biomicrite	35231647	5238 III
850521171	Quartz arenite, Graywacke	36071492	5238 III
850521172	Biosparite	37551370	5238 III
850419147	Shale	37421520	5238 III
850419148	Micrite	33561824	5238 III
850614187	Pseudosparite	25301749	5238 III
850614188	Biomicrite	25071931	5238 III
850614189	Quartz arenite, Quartz wacke	36281647	5238 III
850419150	Biosparite	30871833	5238 III
12. <u>X6.1 Member</u>			
850903147	Silt-shale	06332314	5138 II
850903148	Calcareous shale	08312452	5138 II
850903150	Micrite	12772431	5138 II
850405115	Pseudosparite	03312333	5138 II
850617195	Biomicrite	04782504	5138 II
850617196	Biosparite	07922511	5138 II
850405116	Shale	08312447	5138 II
850904151	Siltstone	11692631	5138 II
850323085	Chert	05242161	5138 II
850905152	Silt-shale	07632431	5138 II
850618197	Calcareous shale	09332364	5138 II
850618199	Pseudosparite	10332470	5138 II
850905153	Biosparite	04332363	5138 II

Sample number	Rock name	Grid reference	Map sheet
13. <u>X6.2 Member</u>			
850523176	Calcareous shale	31521550	5238 III
850324091	Micrite	33441576	5238 III
850411130	Pseudosparite	36411320	5238 III
850508162	Biomicrite	36401251	5238 III
850324092	Biosparite	34331327	5238 III
850508163	Shale	32881479	5238 III
850404113	Siltstone	31251540	5238 III
850523177	Chert	32331530	5238 III
850322084	Calcareous shale	30441650	5238 III
14. <u>X7.1 Member</u>			
850310068	Rhyolitic porphyry	21871277	5238 II
850310069	Dacitic porphyry	19361147	5238 II
850310070	Andesitic porphyry	20401168	5238 II
850311073	Andesitic tuff	22341073	5238 II
850311074	Rhyolitic porphyry	20540839	5238 II
850208011	Dacitic porphyry	18431133	5238 II
850208012	Andesitic porphyry	29741182	5238 II
850310071	Andesitic tuff	28951197	5238 II



Sample number	Rock name	Grid reference	Map sheet
---------------	-----------	----------------	-----------

15. X7.2 Member

841005021	Diorite	24561422	5238 III
841201039	Diorite	25941331	5238 III
841004017	Diorite	12562291	5138 II
85022148	Diorite	12202978	5138 II
85030762	Diorite	24691388	5238 III



ศูนย์วิทยทรัพยากร  
จุฬาลงกรณ์มหาวิทยาลัย

## BIOGRAPHY

Mr. Prasong Pothong was born in Changwat Lampang, northern part of Thailand on April 11, 1958. In 1983 he graduated from the Department of Geology, Faculty of Science, Chiang Mai University with a B.Sc. degree in geology. His past experiences are firstly the short times in private mines which concern mineral exploration of manganese, barite, scheelite and cassiterite. Beginning in 1984 he was employed as a field geologist by the Geological Survey Division, Department of Mineral Resources. Then he resigned from the work because he has attempted to study a Master degree in Geology of Chulalongkorn University.



ศูนย์วิจัยทรัพยากรธรณี  
จุฬาลงกรณ์มหาวิทยาลัย