

REFERENCES

- Aphiwantrakul, S. (2002). Synthesis and Characterization of Polymer-Clay Nanocomposites. M.S. Thesis in Science (Physics), Faculty of Graduate Studies, Mahidol University.
- Bosman, A.W., Janssen, H.M., and Meijer, E.W. (1999). About dendrimers: Structure, physical properties, and applications. Chemical Review, 99(7), 1665-1688.
- Buckman, H.O. and Brady, N.C. (1971). The Nature and Properties of Soils. 7th ed. New York: Macmillan.
- Buleier, E., Wehner, W., and Vögtle, F. (1978). Cascade and nonskid-chain-like syntheses of molecular cavity topologies. Synthesis, 155-158.
- Chang, Y., Kwon, Y.C., Lee, S.C., and Kim, C. (2000). Amphiphilic linear PEO-dendritic carbosilane block copolymers. Macromolecules, 33(12), 4496-4500.
- Chow, G.M. and Gonsalves, K.E. (1996). Nanotechnology: Molecularly Designed Materials: ACS Symposium Series 622.
- Everett, D.H. (1988). Basic Principles of Colloid Science. London: Royal society of chemistry.
- Fréchet, J.M.J. (1994). Functional polymers and dendrimers: Reactivity, molecular architecture, and interfacial energy. Science, 263, 1710-1714.
- Giannelis, E.P. (1996). Polymer layered silicate nanocomposites. Advanced Materials, 8(1), 29-35.
- Harris, D.J., Bonagamba, T.J., and Rohr, K.S. (1999). Conformation of poly(ethylene oxide) intercalated in clay and MoS₂ studied by two-dimensional double-quantum NMR. Macromolecules, 32(20), 6718-6724.
- Hawker, C.J. and Fréchet, J.M.J. (1990). Preparation of polymers with controlled molecular architecture. A new convergent approach to dendritic macromolecules. Journal of American Chemical Society, 112(21), 7638-7647.
- Hawker, C.J., Farrington, P.J., Mackay, M.E., Wooley, K.L., and Fréchet, J.M.J. (1995). Molecular ball bearings: The unusual melt viscosity behavior of

- dendritic macromolecules. Journal of American Chemical Society, 117, 4409-4410.
- Hobson, L.J. and Feast, W.J. (1999). Poly(amidoamine) hyperbranched systems: Synthesis, structure and characterization. Polymer, 40, 1279-1297.
- Kukkadapu, R.K. and Boyd, S.A. (1995). Tetramethylphosphonium- and tetramethylammonium-smectite as adsorbents of aromatic and chlorinated hydrocarbons: Effect of water on adsorption efficiency. Clays and Clay Minerals, 43, 318-323.
- Lilayuthalert, W. (1998). Polyimide-Clay Nanocomposites as Protective Coating for Microelectronics Applications. M.S. Thesis in Polymer Science, The Petroleum and Petrochemical College, Chulalongkorn University.
- Mckay, G. (1996). Use of Adsorbents for the Removal of Pollutants from Wastewaters. New York: CRC Press.
- Månson, J-A. E., Plummer, C.J.G., Garamszegi, L., Leterrier, Y., and Rodlert, M. (2002). Hyperbranched polymer layered silicate nanocomposites. Chemistry of Materials, 14, 486-488.
- Mitchell, J.Jr. (1991). Applied Polymer Analysis and Characterization. New York: Hanser V2.
- Murat, M. and Grest, G.S. (1996). Molecular dynamics study of dendrimer molecules in solvents of varying quality. Macromolecules, 29(4),1278-1285.
- Pinnavaia, T.J. and Beall, G.W. (2000). Polymer-Clay Nanocomposites. England: John Wiley & Sons.
- Swenson, J., Smalley, M.V., Hatharasinghe, H.L.M., and Fragneto, G. (2001). Interlayer structure of a clay-polymer-salt-water system. Langmuir, 17(13), 3813-3818.
- Sheng, G. and Boyd, S.A. (2000). Polarity effect on dichlorobenzene sorption by hexadacyltrimethylammonium-exchanged clays. Clays and Clay Minerals, 48(1), 43-50.
- Thaijaroen, W. (2000). Preparation and Mechanical Properties of NR/Clay Nanocomposite. M.S. Thesis in Polymer Science, The Petroleum and Petrochemical College, Chulalongkorn University.

- Tomalia, D.A., Baker, H., Dewald, J., Hall, M., Kallos, G., Martin, S., Roeck, J., Ryder, J., and Smith, P. (1985). Polymer Journal (Tokyo), 17, 117-132.
- Tomalia, D.A., Watkins, D.M., Sweet, Y.S., Klimash, J.W., and Turro, N.J. (1997). Dendrimers with hydrophobic cores and the formation of supramolecular dendrimer-surfactant assemblies. Langmuir, 13(12), 3136-3141.
- Wibulswas, R. and White, D.A. (2000). Introductory Study of Utilizing Montmorillonite as an Adsorbent in Aqueous System. Research report supported by the Thailand Research Fund.
- Wu, J. and Lerner, M. (1993). Structural, thermal, and electrical characterization of layered nanocomposites derived from Na-montmorillonite and polyethers. Chemistry of Materials, 5(6), 835-838.

APPENDIX A

Calculation of Na⁺-Exchanged Percentage by Atomic Adsorption Spectroscopy

Conditions of instrument

Instrument Mode	Absorbance
Calibration Mode	Concentration
Measurement Mode	Integration
Slit Width (nm)	0.5
Slit Height	Normal
Wavelength (nm)	589.0
Flame	Air-Acetylene
Sample Introduction	Manual
Delay Time	2
Time Constant	0.05
Measurement Time (sec)	1.0
Replicates	3
Background Correction	Off
Air Flow (L/min)	13.5
Acetylene Flow (L/min)	2.00

Condition of sodium lamp

Table A1 Light wavelengths of sodium lamp and their intensities

Wavelength (nm)	Slit width (nm)	Conc. for 0.2 ABS (mg/L)	Relative lamp intensity
589.0	0.5	0.15	100
589.6	0.5	0.30	60
330.3	0.5	80.0	2

The 1000 ppm Na⁺ solution was used as the stock solution. The 100 ppm Na⁺ solution was first prepared by dilution from the 1000 ppm Na⁺ solution. Then, the 10, 1, 0.5, 0.2 ppm Na⁺ solution were further prepared from the 100 ppm Na⁺ solution. The 1, 0.5, 0.2 ppm Na⁺ solution with KCl and 1:1 HCl solution were subsequently used as standard Na⁺ solutions to create a calibration curve.

Table A2 Relationship between concentration and absorbance of standard sodium solution for OC-MMT

Sample	Conc. (ppm)	% RSD	Mean ABS	Readings		
Blank	0.00		0.000	0.002	-0.001	0.000
Blank	0.00		0.000	0.000	0.000	0.000
Blank	0.00		0.000	0.000	0.000	0.000
Standard 1	0.20	0.2	0.107	0.107	0.107	0.107
Standard 2	0.50	0.4	0.258	0.259	0.257	0.258
Standard 3	1.00	1.0	0.540	0.538	0.546	0.535

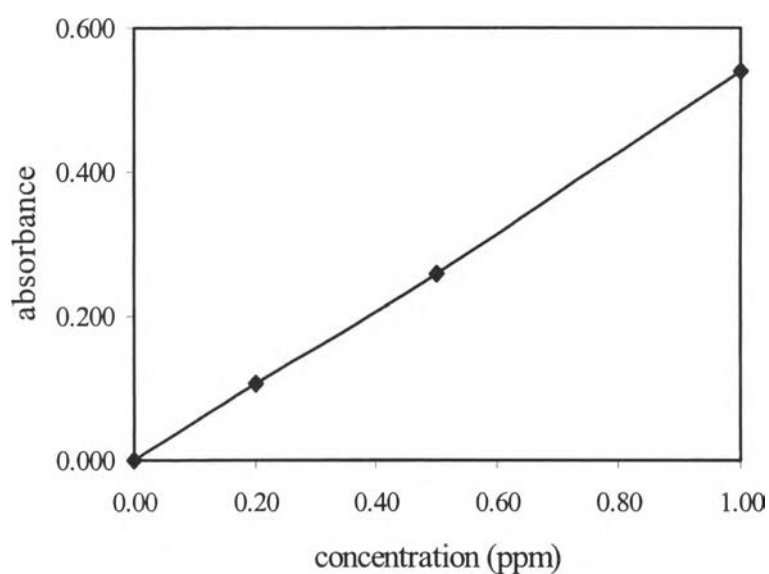


Figure A1 Calibration curve obtained from standard Na⁺ solutions for OC-MMT.

The sample solution was collected from the supernatant part in the preparation of organically modified MMT. This solution was diluted to 200 times and used as the sample solution for AAS test. The Na⁺ exchange percentage was calculated from the following data.

Table A3 Na⁺ concentration of the supernatant of OC-MMT

Sample	Conc. (ppm)	% RSD	Mean ABS	Readings		
OC 1	0.73	1.2	0.384	0.378	0.386	0.389
OC 2	0.72	0.9	0.378	0.376	0.376	0.383
OC 3	0.72	0.9	0.378	0.376	0.383	0.376

Calculation for Na⁺ content

$$\begin{aligned}
 \text{Na}^+ \text{ concentration from AAS} &= 0.72 \text{ ppm (or } \mu\text{g/ml)} \\
 \text{Dilution factor} &= 200 \\
 \text{Total concentration} &= 0.72 \times 200 \mu\text{g/ml} \\
 \text{Amount of supernatant} &= 1.8 \text{ L} \\
 \text{Amount of Na}^+ \text{ in the supernatant} &= 0.72 \times 200 \mu\text{g/ml} \times 1800 \text{ ml} \\
 &= 259,200 \mu\text{g} \\
 &= 259.2 \text{ mg}
 \end{aligned}$$

Calculation for Na⁺ exchange percentage

$$\begin{aligned}
 \text{CEC of Na-MMT} &= 119 \text{ meq} \\
 \text{Na-MMT 100 g contains Na}^+ &= 119 \text{ mmol} \\
 &= 0.119 \text{ mol} \\
 \text{Na}^+ \text{ in 10 g Na-MMT} &= 0.0119 \text{ mol} \\
 &= 0.0119 \times 23 \text{ g} \\
 &= 273.7 \text{ mg} \\
 \text{So, Na}^+ \text{ exchange percentage} &= (259.2 \text{ mg} / 273.7 \text{ mg}) \times 100 \\
 &= 94.70 \%
 \end{aligned}$$

Table A4 Relationship between concentration and absorbance of standard sodium solution for OH-MMT

Sample	Conc. (ppm)	% RSD	Mean ABS	Readings		
Blank	0.00		0.001	0.001	0.000	0.001
Blank	0.00		0.000	0.000	0.000	0.000
Blank	0.00		0.000	0.000	0.000	0.000
Standard 1	0.20	1	0.086	0.087	0.085	0.086
Standard 2	0.50	0.5	0.238	0.237	0.239	0.237
Standard 3	1.00	0.5	0.534	0.536	0.535	0.531

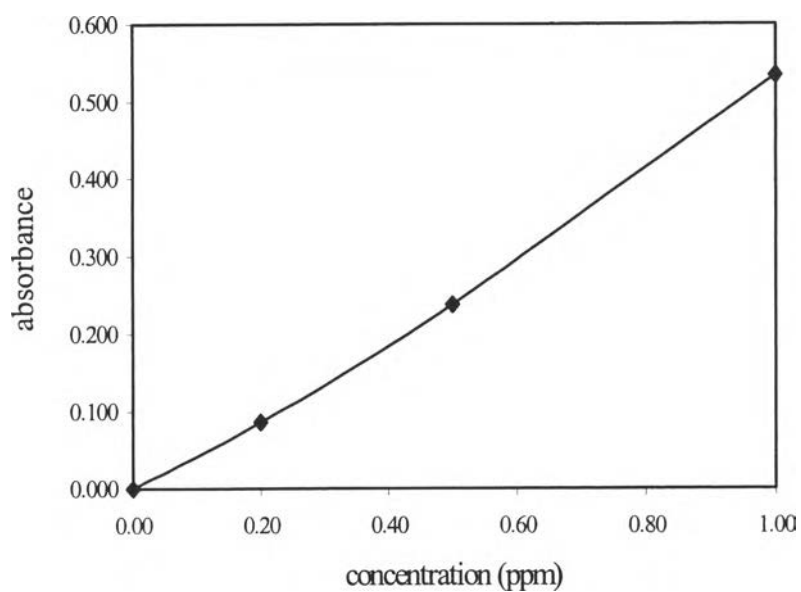


Figure A2 Calibration curve obtained from standard Na⁺ solutions for OH-MMT.

Table A5 Na⁺ concentration of the supernatant of OH-MMT

Sample	Conc. (ppm)	% RSD	Mean ABS	Readings		
OH 1	0.94	0.8	0.497	0.501	0.494	0.495
OH 2	0.94	0.9	0.503	0.501	0.509	0.500
OH 3	0.94	0.9	0.503	0.498	0.503	0.507

Calculation for Na⁺ content

$$\text{Na}^+ \text{ concentration from AAS} = 0.94 \text{ ppm (or } \mu\text{g/ml)}$$

$$\text{Dilution factor} = 200$$

$$\text{Total concentration} = 0.94 \times 200 \mu\text{g/ml}$$

$$\text{Amount of supernatant} = 1.4 \text{ L}$$

$$\text{Amount of Na}^+ \text{ in the supernatant} = 0.94 \times 200 \mu\text{g/ml} \times 1400 \text{ ml}$$

$$= 263,200 \mu\text{g}$$

$$= 263.2 \text{ mg}$$

Calculation for Na⁺ exchange percentage

$$\text{Na}^+ \text{ exchange percentage} = (263.2 \text{ mg} / 273.7 \text{ mg}) \times 100$$

$$= 96.16 \%$$

APPENDIX B

Viscosity and Particle Size Measurement Data of PEO/MMT Nanocomposites

Table B1 Specific viscosity data of PEO/Na-MMT nanocomposites in aqueous solution as a function of Na-MMT loading

Na-MMT (%)	Conc. (g/100ml)	Time (s)				SD	Specific viscosity
		t ₁	t ₂	t ₃	t _{ave}		
0	0.010	184.19	184.16	184.25	184.20	0.05	0.011
	0.050	192.03	191.99	192.07	192.03	0.04	0.054
	0.100	201.67	201.56	201.65	201.63	0.06	0.107
1	0.010	182.80	182.90	182.87	182.86	0.05	0.004
	0.050	189.97	190.02	190.08	190.02	0.06	0.043
	0.100	199.27	199.27	199.35	199.30	0.05	0.094
3	0.010	182.77	182.69	182.74	182.73	0.04	0.003
	0.050	191.07	190.89	190.99	190.98	0.09	0.048
	0.100	199.92	199.81	199.75	199.83	0.09	0.097
5	0.010	183.63	183.62	183.64	183.63	0.01	0.008
	0.050	190.39	190.33	190.27	190.33	0.06	0.045
	0.100	198.43	198.30	198.27	198.33	0.09	0.088
10	0.010	183.54	183.56	183.59	183.56	0.03	0.007
	0.050	189.50	189.55	189.50	189.52	0.03	0.040
	0.100	197.75	197.69	197.71	197.72	0.03	0.085
20	0.010	182.94	183.00	182.97	182.97	0.03	0.004
	0.050	187.22	187.28	187.21	187.24	0.04	0.028
	0.100	193.18	193.13	193.30	193.20	0.09	0.060
60	0.010	182.54	182.57	182.54	182.55	0.02	0.002
	0.050	186.33	186.40	186.52	186.42	0.10	0.023
	0.100	191.36	191.42	191.43	191.40	0.04	0.050

Table B2 Specific viscosity data of 0.1g/100ml PEO/Na-MMT nanocomposites in aqueous solution in the presence of NaCl as a function of Na-MMT loading

Na-MMT (%)	NaCl (M)	Time (s)				SD	Specific viscosity
		t ₁	t ₂	t ₃	t _{ave}		
1	0.001	199.57	199.54	199.56	199.56	0.02	0.095
	0.010	199.32	199.19	199.20	199.24	0.07	0.093
	0.100	199.87	199.67	199.76	199.77	0.10	0.096
3	0.001	199.53	199.47	199.49	199.50	0.03	0.095
	0.010	199.53	199.35	199.35	199.41	0.10	0.094
	0.100	200.79	200.83	200.89	200.84	0.05	0.102
5	0.001	198.64	198.56	198.76	198.65	0.10	0.090
	0.010	199.27	199.18	199.22	199.22	0.05	0.093
	0.100	198.62	198.52	198.48	198.54	0.07	0.090
10	0.001	196.29	196.21	196.14	196.21	0.08	0.077
	0.010	198.33	198.34	198.36	198.34	0.02	0.089
	0.100	197.78	197.67	197.77	197.74	0.06	0.085
20	0.001	194.13	194.17	194.03	194.11	0.07	0.065
	0.010	193.53	193.50	193.64	193.56	0.07	0.062
	0.100	192.30	192.31	192.19	192.27	0.07	0.055
60	0.001	191.39	191.23	191.33	191.32	0.08	0.050
	0.010	188.05	187.83	187.87	187.92	0.12	0.031
	0.100	185.15	185.19	185.23	185.19	0.04	0.016

Table B3 Particle size data obtained from dynamic light scattering of PEO/Na-MMT nanocomposites in aqueous solution as a function of Na-MMT loading

Na-MMT (%)	Conc. (g/100ml)	Diameter (nm)				P	% in range
		Z ₁	Z ₂	Z ₃	Z _{ave}		
1	0.010	250.5	236.0	234.4	240.3	0.783	82.10
	0.050	285.4	241.8	232.8	253.3	0.791	85.47
	0.100	97.7	113.1	116.5	109.1	0.888	76.40
3	0.010	305.3	329.6	324.8	319.9	0.882	71.03
	0.050	336.1	302.3	295.2	311.2	0.900	79.57
	0.100	256.8	229.5	233.4	239.9	1.000	78.37
5	0.010	404.5	394.0	382.0	393.5	0.943	74.00
	0.050	348.8	339.4	360.2	349.5	0.870	79.77
	0.100	256.9	259.7	218.1	244.9	1.000	78.67
10	0.010	492.8	434.9	415.3	447.7	0.718	80.37
	0.050	505.4	478.7	500.7	494.9	0.708	85.03
	0.100	511.8	545.5	508.6	522.0	0.774	83.83
20	0.010	483.5	491.2	471.1	481.9	0.635	86.90
	0.050	508.7	510.3	513.1	510.7	0.560	92.90
	0.100	504.9	502.8	504.1	503.9	0.526	96.63
60	0.010	498.2	491.2	502.3	497.2	0.545	92.20
	0.050	498.7	472.4	485.7	485.6	0.577	93.10
	0.100	501.2	509.4	497.5	502.7	0.516	97.13

Table B4 Particle size data obtained from dynamic light scattering of 0.1g/100ml PEO/Na-MMT nanocomposites in aqueous solution in the presence of NaCl as a function of Na-MMT loading

Na-MMT (%)	NaCl (M)	Diameter (nm)				P	% in range
		Z ₁	Z ₂	Z ₃	Z _{ave}		
1	0.001	309.3	282.9	287.5	293.23	0.958	79.67
	0.010	230.4	230.9	219.9	227.07	0.960	86.10
	0.100	307.2	267.0	278.0	284.07	1.000	82.13
3	0.001	228.4	231.9	241.8	234.03	1.000	75.60
	0.010	359.7	351.5	366.1	359.10	0.798	91.90
	0.100	196.0	200.7	181.5	192.73	1.000	83.73
5	0.001	290.7	260.8	246.4	265.97	0.946	86.47
	0.010	352.8	380.1	356.6	363.17	0.739	90.37
	0.100	339.2	344.9	339.1	341.07	0.732	95.80
10	0.001	766.7	702.9	617.0	695.53	0.764	88.27
	0.010	369.4	380.0	374.0	374.47	1.000	86.67
	0.100	158.4	150.1	171.9	160.13	1.000	79.63
20	0.001	444.7	447.8	446.8	446.43	1.000	84.87
	0.010	448.8	449.9	497.6	465.43	1.000	84.67
	0.100	350.2	430.5	412.1	397.60	1.000	74.77
60	0.001	506.4	516.0	499.2	507.20	0.901	85.67
	0.010	780.0	785.2	756.8	774.00	0.520	95.20
	0.100	3525.7	4056.6	4531.9	4038.07	0.262	92.60

Table B5 Specific viscosity data of PEO/OC-MMT nanocomposites in aqueous solution as a function of OC-MMT loading

MMTs	Conc. (g/100ml)	Time (s)				SD	Specific viscosity
		t ₁	t ₂	t ₃	t _{ave}		
OC-MMT1%	0.010	183.91	183.83	183.77	183.84	0.07	0.009
	0.050	190.38	190.32	190.35	190.35	0.03	0.045
	0.100	198.39	198.36	198.33	198.36	0.03	0.089
OC-MMT10%	0.010	183.33	183.28	183.23	183.28	0.05	0.006
	0.050	189.56	189.48	189.53	189.52	0.04	0.040
	0.100	197.71	197.72	197.63	197.69	0.05	0.085
OC-MMT60%	0.010	182.75	182.81	182.66	182.74	0.08	0.003
	0.050	188.62	188.53	188.55	188.57	0.05	0.035
	0.100	196.79	196.75	196.77	196.77	0.02	0.080

Table B6 Specific viscosity data of 0.1g/100ml PEO/OC-MMT nanocomposites in aqueous solution in the presence of NaCl as a function of OC-MMT loading

MMTs	NaCl (M)	Time (s)				SD	Specific viscosity
		t ₁	t ₂	t ₃	t _{ave}		
OC-MMT1%	0.001	199.10	199.12	199.02	199.08	0.05	0.093
	0.010	198.28	198.16	198.15	198.20	0.07	0.088
	0.100	199.87	199.76	199.74	199.79	0.07	0.097
OC-MMT10%	0.001	197.73	197.81	197.71	197.75	0.05	0.085
	0.010	196.67	196.51	196.52	196.57	0.09	0.079
	0.100	198.47	198.45	198.44	198.45	0.02	0.089
OC-MMT60%	0.001	196.75	196.79	196.76	196.77	0.02	0.080
	0.010	195.76	195.95	195.83	195.85	0.10	0.075
	0.100	197.61	197.69	197.73	197.68	0.06	0.085

Table B7 Specific viscosity data of PEO/OH-MMT nanocomposites in aqueous solution as a function of OH-MMT loading

MMTs	Conc. (g/100ml)	Time (s)				SD	Specific viscosity
		t ₁	t ₂	t ₃	t _{ave}		
OH-MMT1%	0.010	184.06	184.04	184.04	184.05	0.01	0.010
	0.050	190.53	190.53	190.60	190.55	0.04	0.046
	0.100	198.64	198.73	198.67	198.68	0.05	0.090
OH-MMT10%	0.010	183.30	183.30	183.45	183.35	0.09	0.006
	0.050	188.87	188.71	188.76	188.78	0.08	0.036
	0.100	196.06	196.13	196.06	196.08	0.04	0.076
OH-MMT60%	0.010	182.88	182.96	182.91	182.92	0.04	0.004
	0.050	187.34	187.30	187.24	187.29	0.05	0.028
	0.100	193.82	193.85	193.88	193.85	0.03	0.064

Table B8 Specific viscosity data of 0.1g/100ml PEO/OH-MMT nanocomposites in aqueous solution in the presence of NaCl as a function of OH-MMT loading

MMTs	NaCl (M)	Time (s)				SD	Specific viscosity
		t ₁	t ₂	t ₃	t _{ave}		
OH-MMT1%	0.001	199.08	198.99	199.19	199.09	0.10	0.093
	0.010	199.36	199.26	199.27	199.30	0.06	0.094
	0.100	200.27	200.11	200.10	200.16	0.10	0.099
OH-MMT10%	0.001	197.43	197.36	197.44	197.41	0.04	0.083
	0.010	197.06	196.91	196.86	196.94	0.10	0.081
	0.100	198.12	197.97	198.05	198.05	0.08	0.087
OH-MMT60%	0.001	196.21	196.20	196.25	196.22	0.03	0.077
	0.010	196.57	196.55	196.62	196.58	0.04	0.079
	0.100	196.97	196.93	196.95	196.95	0.02	0.081

APPENDIX C

UV Standard Calibration Curve for Adsorption Test

Standard solutions were prepared by dilution of the 8670 ppm toluene in n-hexane and the 8600 ppm xylene in cyclohexane to 86.7 and 86 ppm, respectively. These prepared solutions were further diluted to 8.67, 6.07, 4.34, 3.47 and 1.73 ppm for toluene and 8.60, 6.88, 5.16, 3.44 and 1.72 ppm for xylene, and they were used as standard solutions to create a calibration curve as shown in Figure C1 and C2.

Table C1 Relationship between concentration and absorbance of standard toluene in n-hexane solution

Concentration (ppm)	Readings			Mean ABS
	abs ₁	abs ₂	abs ₃	
1.73	0.15921	0.15932	0.15936	0.15930
3.47	0.34144	0.34138	0.34146	0.34143
4.34	0.44695	0.44701	0.44711	0.44702
6.07	0.59241	0.59238	0.59252	0.59244
8.67	0.83711	0.83701	0.83696	0.83703

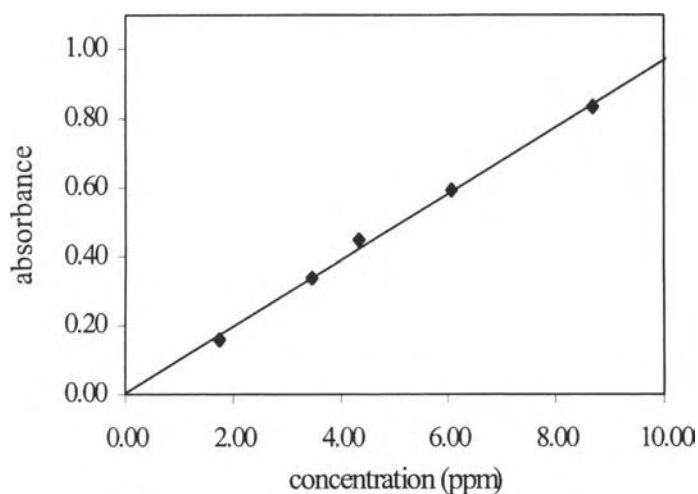


Figure C1 Calibration curve of standard toluene in n-hexane solution.

Table C2 Relationship between concentration and absorbance of standard xylene in cyclohexane solution

Concentration (ppm)	Readings			Mean ABS
	abs ₁	abs ₂	abs ₃	
1.72	0.05509	0.05493	0.05502	0.05501
3.44	0.11701	0.11707	0.11714	0.11707
5.16	0.16989	0.16991	0.16995	0.16992
6.88	0.23675	0.23664	0.23672	0.23670
8.60	0.28780	0.28775	0.28768	0.28774

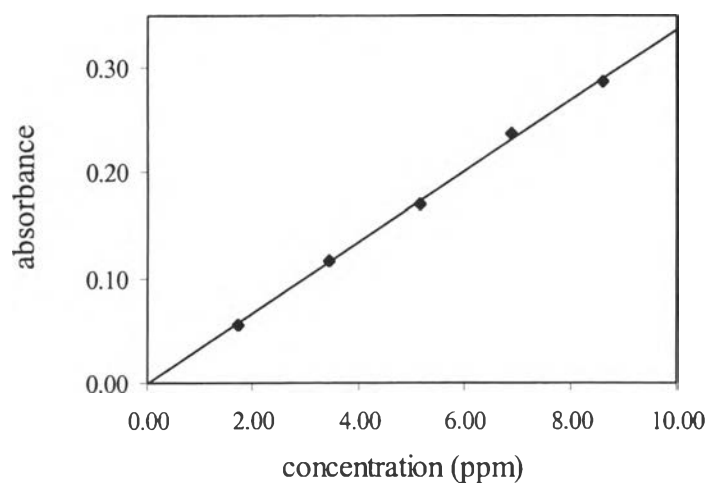


Figure C2 Calibration curve of standard xylene in cyclohexane solution.

The sample solutions were diluted into 5,000 times and the amounts of left over adsorbate were determined by using UV/VIS spectrometer.

APPENDIX D

Mass Balance Equation for Calculation of Adsorption Test

The concentration of adsorbed species on the adsorbent nanocomposites could be calculated from a simple mass balance equation by the assumption that the decrease from the initial concentration was due to the sorption by sorbent (Wibulswas, 2000).

$$ym = V(x_o - x)$$

where:

y = the quantity of adsorbate on nanocomposites (mg/g)

m = dry weight of adsorbent used (g)

V = volume of adsorbate solution (ml)

x_o = the initial concentration of adsorbate in solution (mg/ml)

x = the final concentration of adsorbate in solution (mg/ml)

APPENDIX E

Adsorption Data of Pure Na-MMT, OC-MMT and OH-MMT

Table E1 Toluene adsorption data of pure Na-MMT, OC-MMT and OH-MMT

MMTs	Absorbance				Dilution factor	Conc. (ppm)
	abs ₁	abs ₂	abs ₃	abs _{ave}		
Na-MMT	0.19320	0.20130	0.20580	0.20010	5000	10067.08
OC-MMT	0.29210	0.29160	0.29260	0.29210	1000	2962.00
OH-MMT	2.59560	2.61710	2.62280	2.61183	100	2690.23

Table E2 Xylene adsorption data of pure Na-MMT, OC-MMT and OH-MMT

MMTs	Absorbance				Dilution factor	Conc. (ppm)
	abs ₁	abs ₂	abs ₃	abs _{ave}		
Na-MMT	0.21583	0.21609	0.21613	0.21602	5000	32091.21
OC-MMT	0.28872	0.28864	0.28861	0.28866	5000	42773.11
OH-MMT	0.51807	0.51995	0.52136	0.51979	5000	76763.72

APPENDIX F

Adsorption Data of PEO/NA-MMT, PEO/OC-MMT and PEO/OH-MMT Nanocomposites

Table F1 Toluene adsorption data of PEO/Na-MMT, PEO/OC-MMT and PEO/OH-MMT nanocomposites

MMTs (%)	Absorbance				Dilution factor	Conc. (ppm)
	abs ₁	abs ₂	abs ₃	abs _{ave}		
MMT 3%	0.41286	0.41426	0.41553	0.41422	5000	21114.55
MMT 10%	0.75938	0.75960	0.75933	0.75944	5000	38926.73
MMT 60%	1.03890	1.04020	1.03900	1.03937	5000	53374.61
OC-MMT 3%	1.25870	1.25860	1.26000	1.25910	5000	64711.04
OC-MMT 10%	1.20470	1.20370	1.20400	1.20413	5000	61867.90
OC-MMT 60%	0.52492	0.52588	0.52727	0.52602	100	537.69
OH-MMT 3%	0.92005	0.92028	0.92046	0.92026	5000	47227.21
OH-MMT 10%	0.90783	0.90830	0.90843	0.90819	5000	46604.06
OH-MMT 60%	2.39870	2.40350	2.40440	2.40220	100	2473.89

Table F2 Xylene adsorption data of PEO/Na-MMT, PEO/OC-MMT and PEO/OH-MMT nanocomposites

MMTs (%)	Absorbance				Dilution factor	Conc. (ppm)
	abs ₁	abs ₂	abs ₃	abs _{ave}		
MMT 3%	0.54376	0.54229	0.54589	0.54398	5000	80320.59
MMT 10%	0.54080	0.55184	0.54895	0.54720	5000	80793.63
MMT 60%	0.45886	0.42241	0.48545	0.45557	5000	67319.61
OC-MMT 3%	0.54863	0.54856	0.54920	0.54880	5000	81028.92
OC-MMT 10%	0.35048	0.34981	0.34996	0.35008	5000	51806.37
OC-MMT 60%	0.00000	0.00000	0.00000	0.00000	5000	0.00
OH-MMT 3%	0.40889	0.40766	0.40816	0.40824	5000	60358.33
OH-MMT 10%	0.28849	0.28802	0.28885	0.28845	5000	42743.14
OH-MMT 60%	1.72790	1.73210	1.73220	1.73073	100	5096.86

APPENDIX G

Adsorption Data of PAMAM/Na-MMT, PAMAM/OC-MMT and PAMAM/OH-MMT Nanocomposites at 10wt% MMTs

Table G1 Toluene adsorption data of PAMAM/Na-MMT, PAMAM/OC-MMT and PAMAM/OH-MMT nanocomposites at 10wt% MMTs

MMTs	Absorbance				Dilution factor	Conc. (ppm)
	abs ₁	abs ₂	abs ₃	abs _{ave}		
Na-MMT	0.14838	0.14843	0.14829	0.14837	5000	7398.00
OC-MMT	0.93598	0.93571	0.93472	0.93547	5000	48011.87
OH-MMT	0.67347	0.67377	0.67419	0.67381	5000	34510.32

Table G2 Xylene adsorption data of PAMAM/Na-MMT, PAMAM/OC-MMT and PAMAM/OH-MMT nanocomposites at 10wt% MMTs

MMTs	Absorbance				Dilution factor	Conc. (ppm)
	abs ₁	abs ₂	abs ₃	abs _{ave}		
Na-MMT	0.49319	0.49800	0.54741	0.51287	5000	75745.59
OC-MMT	0.48795	0.49636	0.54501	0.50977	5000	75290.20
OH-MMT	0.35810	0.36480	0.38176	0.36822	100	54473.53

CURRICULUM VITAE

Name: Korawan Ratanarat

Date of Birth: 6 October 1980

Nationality: Thai

University Education:

1997-2000 Bachelor of Science Degree, Department of Materials Science,
Faculty of Science, Chulalongkorn University, Bangkok, Thailand.