

การทำให้บริสุทธิ์และลักษณะสมบัติของเมล็ดดินจากเหง้าของขมิ้นชัน *Curcuma longa* Linn.



นางสาวปริญพร เพ็ชรนวล

ศูนย์วิทยทรัพยากร
จุฬาลงกรณ์มหาวิทยาลัย

วิทยานิพนธ์นี้เป็นส่วนหนึ่งของการศึกษาตามหลักสูตรปริญญาวิทยาศาสตรมหาบัณฑิต

สาขาวิชาเทคโนโลยีชีวภาพ

คณะวิทยาศาสตร์ จุฬาลงกรณ์มหาวิทยาลัย

ปีการศึกษา 2552

ลิขสิทธิ์ของจุฬาลงกรณ์มหาวิทยาลัย

**PURIFICATION AND CHARACTERIZATION OF LECTIN FROM RIZOMES OF
Curcuma longa Linn.**



Miss Pariyaphon Petnual

ศูนย์วิทยทรัพยากร
จุฬาลงกรณ์มหาวิทยาลัย

**A Thesis Submitted in Partial Fulfillment of the Requirements
for the Degree of Master of Science Program in Biotechnology**


Faculty of Science Chulalongkorn University

Academic Year 2009

Copyright of Chulalongkorn University


Thesis Title PURIFICATION AND CHARACTERIZATION OF LECTIN
FROM RIZOMES OF *Curcuma Longa* Linn.
By Miss Pariyaphon Petnual
Field of Study Biotechnology
Thesis Advisor Associate Professor Polkit Sangvanich, Ph.D.
Thesis Co-Advisor Aphichart Karnchanatat, Ph.D.

Accepted by the Faculty of Science, Chulalongkorn University in Partial
Fulfillment of the Requirements for the Master's Degree

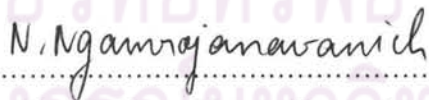

..... Dean of the Faculty of Science
(Professor Supot Hannongbua, Dr. rer. nat.)


THESIS COMMITTEE


..... Chairman
(Associate Professor Amorn Petsom, Ph.D.)


..... Thesis Advisor
(Associate Professor Polkit Sangvanich, Ph.D.)

Aphichart Karnchanatat
..... Thesis Co-Advisor
(Aphichart Karnchanatat, Ph.D.)


..... Examiner
(Associate Professor Nattaya Ngamrojanawanich, Ph.D.)


..... External Examiner
(Chantragan Phiphobmongkol, Ph.D.)

ปริยพร เพ็ชรนวล : การทำให้บริสุทธิ์และลักษณะสมบัติของเลคตินจากเหง้าของขมิ้นชัน *Curcuma longa* Linn. (PURIFICATION AND CHARACTERIZATION OF LECTIN FROM RHIZOMES OF *Curcuma longa* Linn.) อ. ที่ปรึกษาวิทยานิพนธ์หลัก : รศ.ดร.พลกฤษณ์ แสงวณิช, อ. ที่ปรึกษาวิทยานิพนธ์ร่วม: ดร.อภิชาติ กาญจนทัต, 81 หน้า.

ในงานวิจัยนี้ได้ทำการศึกษาลักษณะสมบัติของเลคตินจากเหง้าของขมิ้นชัน *Curcuma longa* Linn. โดยการนำเหง้าของขมิ้นชันมาสกัดด้วยสารละลายทริสบัฟเฟอร์ที่ค่าความเป็นกรดค่า 7.2 จากนั้นนำไปตีน้ำมาทำให้บริสุทธิ์โดยการตกตะกอนด้วยเกลือแอมโมเนียมซัลเฟตอิ่มตัวที่ 80 เปอร์เซ็นต์ ทำเลคตินให้บริสุทธิ์โดยเทคนิคโครมาโทกราฟีแบบสัมพรรคภาพด้วยคอลัมน์ ConA Sepharose เลคตินนี้ เมื่อใช้เทคนิคพอลิอะคริลาไมด์เจลอิเล็กโทรเฟอริซิสแบบเสียดภาพ ซึ่งเลคตินบริสุทธิ์ที่ได้มีน้ำหนักโมเลกุลประมาณ 17.3 กิโลดาลตัน และมีกิจกรรมการเกาะกลุ่มของเซลล์เม็ดเลือดแดงกับหมู่เลือดบีของคน กระต่าย หนูแรท หนูเมาส์ หนูตะเภา ห่าน และแกะ ตามลำดับ เลคตินเสถียรที่อุณหภูมิต่ำกว่า 50 องศาเซลเซียส เป็นเวลา 60 นาที และสูญเสียกิจกรรมอย่างสมบูรณ์ที่อุณหภูมิ 70 องศาเซลเซียสขึ้นไป ขณะที่เลคตินสามารถทนค่าความเป็นกรด-ด่างที่ 2 จนถึง 5 และเสถียรที่ ค่าความเป็นกรด-ด่างที่ 6 จนถึง 7 เลคตินมีความต้องการไอออนของแคลเซียม และแมงกานีสไอออนอย่างน้อย 50 มิลลิโมลาร์ ซึ่งจำเป็นสำหรับเสถียรภาพของโครงสร้าง และกิจกรรมของเลคติน การวิเคราะห์ลำดับกรดอะมิโนภายในโมเลกุลของเลคติน ด้วยการย่อยเลคตินด้วยทริปซิน แล้ววิเคราะห์ด้วยเครื่องแมสเปกโตรเมตรี ลำดับกรดอะมิโนที่พบ มีความคล้ายคลึงกับเลคตินในพืชตระกูล Fabaceae นอกจากนี้ เลคตินสามารถยับยั้งการเจริญเติบโตของราโรคพืช ได้แก่ *Exserohilum turcicum*, *Fusarium oxysporum* และ *Colectrotrichum cassicola* ที่ความเข้มข้น 47 จนถึง 94 ไมโครกรัม สามารถยับยั้งการเจริญเติบโตของจุลินทรีย์ด้วยค่าความเข้มข้นน้อยสุดที่สามารถยับยั้งของเชื้อ *P. aeruginosa*, *S. aureus*, *B. subtilis*, *C. albican* และ *E. coli* เรียงลำดับจากน้อยไปมาก ดังนี้ คือ 0.002, 0.005, 0.011, 0.046 และ 0.09 มิลลิกรัมต่อมิลลิลิตร และค่าความเข้มข้นการยับยั้งการทำงานของแอลฟา- กลูโคซิเดสที่ 50 เปอร์เซ็นต์ เท่ากับ 0.0166 มิลลิกรัมต่อมิลลิลิตร

สาขาวิชา:.....เทคโนโลยีชีวภาพ.....ลายมือชื่อนิติศ.....โรจน์ร.....จันทร์นวล.....
ปีการศึกษา:.....2552.....ลายมือชื่อ อ.ที่ปรึกษาวิทยานิพนธ์หลัก.....พลกฤษณ์ /ว.....
ลายมือชื่อ อ.ที่ปรึกษาวิทยานิพนธ์ร่วม.....อภิชาติ กาญจนทัต.....

5072349323 : MAJOR BIOTECHNOLOGY

KEY WORD: LECTIN / CONCAVALIN A SEPHAROSE / *Curcuma longa*

PARIYAPHON PETNUAL: PURIFICATION AND CHARACTERIZATION OF LECTIN FROM RIZOMES OF *Curcuma longa* Linn. THESIS ADVISOR: ASSOC. PROF. POLKIT SANGVANICH, Ph.D., THESIS CO-ADVISOR: APHICHART KARNCHANATAT, Ph.D, 81 pp.

A lectin was purified from the rhizomes of turmeric (*Curcuma longa* L.) by aqueous extraction, precipitation with 80% saturation ammonium sulfate, and affinity chromatography on ConA Sepharose with Methyl- α -D-glucopyranoside mediated elution. The enriched preparation had a specific activity of 64,566 HU/mg protein for a yield of 41.2% total protein. The molecular weight of this lectin was estimated by SDS-15% (w/v) PAGE to be 17.3 kDa. It has hemagglutinating activity against human blood group B, as well as rabbit, mouse, rat, guinea pig, geese and sheep erythrocytes, but no such activity was detected against human blood groups A, AB and O. The pH optimum of this lectin's hemagglutination activity is between pH 6 - 7, and it is stable up to 40 °C but is totally inactivated after exposure to 70 °C for 30 min. The hemagglutination activity was stimulated by Ca^{2+} and Mn^{2+} at less than 50 mM, but not by Mg^{2+} , Fe^{3+} , Hg^{2+} , Co^{2+} and EDTA. The amino acid sequence of an internal fragment of this purified *C. longa* rhizomal lectin had a similarity to the sequence of the phytohemagglutinin precursor from the plant legume lectin family. The purified *C. longa* lectin, at a concentration of 47 and 94 $\mu\text{g}/0.3 \text{ cm}^2$ disc showed antifungal activity against *Exserohilum turcicum*, *Fusarium oxysporum* and *Colectrotrichum cassiicola*. The lowest to highest minimal inhibitory concentration (MIC) values of 0.002, 0.005, 0.011, 0.09 and 0.046 mg/ml were obtained against the four bacterial species, *P. aeruginosa*, *S. aureus*, *B. subtilis*, and *E. coli*, plus the yeast *C. albicans*, respectively, for the purified lectin preparation, along with a high α -glucosidase inhibitory activity with an IC_{50} of 8 $\mu\text{g}/\text{ml}$.

Field of study:.....Biotechnology.....Student's signature.....Pariyaphon Petnual.....
 Academic year:.....2009.....Advisor's signature.....Polkit Sangvanich.....
 Co-advisor's signature.....Aphichart Karnchanatat.....

ACKNOWLEDGEMENTS

I would like to express my deepest appreciation and gratitude to Associate Professor Polkit Sangvanich my advisor and Dr. Aphichart Karnchanatat my co-advisor for their excellent instruction, guidance, encouragement and support throughout this dissertation. Without their kindness, this work could not be accomplished.

My gratitude is also extent to Associate Professor Amon Petsom, Associate Professor Nattaya Ngamrojnavanich and Dr. Chantragan Phiphopmongkol for serving as dissertation committee, for their available comments and also for useful suggestions.

My Special thanks to Dr. Supissara Techapremreecha for helping of bacterial stock for antibacterial and experiment and Miss Apaporn Boonmee for helping of every experiment method including she is commentators.

Sincere thanks also extent to all members and all friends of the Program of Biotechnology, member in Research Center for Bioorganic Chemistry and Institute of Biotechnology and Genetic Engineering for their kindness, friendship and helpfulness.

This work was financially supported by the Graduate School Research Fund of Chulalongkorn University.

Finally, my deepest gratitude is to my family for their support, understanding, and encouragement throughout my study.

ศูนย์วิทยทรัพยากร
จุฬาลงกรณ์มหาวิทยาลัย

CONTENTS

| | Pages |
|--|------------|
| ABSTRACT (THAI) | iv |
| ABSTRACT (ENGLISH) | v |
| ACKNOWLEDGEMENTS | vi |
| CONTENTS | vii |
| LIST OF FIGURES | x |
| LIST OF TABLES | xi |
| LIST OF ABBREVIATIONS | xii |
| CHAPTER | |
| I INTRODUCTION | 1 |
| II REVIWE OF THE LITERATURES | 3 |
| 2.1 The discovery of lectin..... | 3 |
| 2.2 Distribution of lectins..... | 4 |
| 2.2.1 Bacteria lectins..... | 4 |
| 2.2.2 Fungal lectins | 4 |
| 2.2.3 Algal lectins | 5 |
| 2.2.4 Viral lectins | 5 |
| 2.2.5 Animal lectins | 6 |
| 2.2.6 Plant lectins | 6 |
| 2.3 Isolate and Purification | 8 |
| 2.3.1 From natural sources..... | 8 |
| 2.3.2 By recombinant techniques..... | 10 |
| 2.4 Biological Activities of lectins..... | 11 |
| 2.4.1 Assay for Hemagglutinating | 11 |
| 2.4.2 Lectin with anti-viral activity..... | 11 |
| 2.4.3 Lectins with anti-bacteria activity..... | 12 |
| 2.4.4 Lectin with anti-fungal..... | 12 |
| 2.4.5 Lectin with anti-insect properties..... | 12 |

| CHAPTER | pages |
|---|-----------|
| 2.4.6 Plant lectin with toxicity for higher animals..... | 12 |
| 2.5 Sugar Binding Activity and Specificity of Plant Lectins..... | 12 |
| 2.5.1 Mannose/Glucose..... | 13 |
| 2.5.2 Galactose/N-acetylgalactosamine | 14 |
| 2.5.3 Fucose | 14 |
| 2.5.4 Sialic acids | 15 |
| 2.6 Lectins in edible plant..... | 15 |
| 2.7 Family of Zingiberaceae | 16 |
| 2.8 Species of <i>Curcuma longa</i> Linn..... | 17 |
| III EXPERIMENTALS..... | 20 |
| 3.1 Chemicals..... | 20 |
| 3.2 Equipment..... | 22 |
| 3.3 Plant material | 22 |
| 3.4 Blood Sample..... | 23 |
| 3.5 Microorganism..... | 23 |
| 3.6 Lectin Purification..... | 24 |
| 3.6.1 Determination of protein concentration..... | 24 |
| 3.6.2 Carbohydrate content..... | 25 |
| 3.6.3 Determination of protein pattern on native-PAGE | 25 |
| 3.6.4 Hemagglutination assay | 26 |
| 3.7 Biochemical characterization lectin from <i>Curcuma longa</i> | 26 |
| 3.7.1 Molecular weight determination..... | 26 |
| 3.7.2 Blood group specificity..... | 27 |
| 3.7.3 Effect of temperature on lectin activity..... | 27 |
| 3.7.4 Effect of pH on lectin activity..... | 27 |
| 3.7.5 Effect of metal ion | 28 |
| 3.7.6 Internal amino acid sequence of lectin by LC-MS/MS | 28 |
| 3.8 Other biological activity testing..... | 29 |
| 3.8.1 Alpha-glucosidase inhibition activity | 29 |
| 3.8.2 Assay of antifungal activity | 29 |

| CHAPTER | pages |
|---|--------------|
| 3.8.3 Assay of antibacteria activity by minimal inhibition concentration (MIC) | 30 |
| 3.8.3.1 Preparation of bacteria..... | 30 |
| 3.8.3.2 Assay of bacteria activities by MIC | 30 |
| IV RESULT & DISCUSSION..... | 31 |
| 4.1 Purification of lectin from <i>Curcuma longa</i> | 33 |
| 4.2 Molecular weight determination | 35 |
| 4.3 Assay for hemagglutinating activity | 36 |
| 4.4 Effect of temperature on the lectin hemagglutination activity and Stability | 38 |
| 4.5 Effect of pH on the lectin hemagglutination activity..... | 40 |
| 4.6 Effect of metal ions on the hemagglutination level | 41 |
| 4.7 Internal amino acid sequence of lectin by LC/MS/MS..... | 42 |
| 4.8 Assay of antifungal activity | 44 |
| 4.9 Assay of bacterial activity..... | 45 |
| 4.10 Alpha-glucosidase inhibition activity | 47 |
| V CONCLUSION..... | 48 |
| REFERENCES..... | 49 |
| APPENDIXS..... | 71 |
| APPENDIX A | 70 |
| APPENDIX B | 73 |
| APPENDIX C | 76 |
| APPENDIX D | 77 |
| APPENDIX E | 78 |
| APPENDIX F..... | 80 |
| BIOGRAPHY | 81 |

LIST OF FIGURES

| Figure | Pages |
|--------|--|
| 2.1 | Scheme for lectin purification.....9 |
| 2.2 | Common structure features of N-acetylneuraminic acid and N-acetylglucosamine..... 13 |
| 2.3 | Rhizome of <i>Curcuma longa</i> Linn.17 |
| 2.4 | Chemical structure of curcumin, demethoxy curcumin and bisdemethoxy curcumin..... 18 |
| 4.1 | Affinity chromatogram of <i>C. longa</i> rhizome lectin on a ConA Sepharose column.....33 |
| 4.2 | Coomassie blue stained non-denaturing PAGE of the <i>C. longa</i> rhizome lectin.....34 |
| 4.3 | Reducing SDS-PAGE analysis of the <i>C. longa</i> rhizome lectin36 |
| 4.4 | Effect of temperature on the agglutinating activity of the purified <i>C. longa</i> rhizome lectin.....39 |
| 4.5 | Thermostability of the same purified lectin towards a rabbit erythrocyte suspension in TBS.....40 |
| 4.6 | The effect of pH on the hemagglutinating activity of <i>C. longa</i> rhizome lectin towards rabbit erythrocytes41 |
| 4.7 | Amino acid sequence from the tryptic fragments of the purified <i>C. longa</i> lectin.....43 |
| 4.8 | LC/MS/MS spectra of the tryptic digest of the purified lectin.44 |
| 4.9 | The antifungal (colony growth inhibition) effect of the <i>C. longa</i> rhizome lectin towards (A) <i>E. turicicum</i> , (B) <i>F. oxysporum</i> and (C) <i>C. cassiicola</i> , showing the (a) negative control (10 μ l of 20 mM Tris-HCl buffer pH 7.4), (b) 47 μ g/ 0.3 cm^2 disc and (c) 94 μ g/ 0.3 cm^2 disc of <i>C. longa</i> rhizome lectin.....46 |

LIST OF TABLES

| Table | Pages |
|--|-------|
| 4.1 Purification of the lectin from the rhizomes of <i>C. longa</i> | 35 |
| 4.2 Hemagglutinating activity of the purified <i>C. longa</i> rhizome lectin against human and other animal erythrocytes | 37 |
| 4.3 <i>C. longa</i> lectin activity on metal ions and EDTA | 46 |
| 4.4 MIC value of purified lectin from <i>C. longa</i> | 54 |



ศูนย์วิทยทรัพยากร
จุฬาลงกรณ์มหาวิทยาลัย

LIST OF ABBREVIATIONS

| | |
|----------|---|
| % | percentage |
| °C | degree celsion |
| µg | microgram |
| µl | microliter |
| A | Absorbance |
| BSA | Bovine serum albumin |
| cm | centimeter |
| Da | Dalton |
| EDTA | Ethyllenediamine tetraacetic acid |
| g | gram |
| hr | hour |
| kDa | kilodalton |
| l | liter |
| LC-MS-MS | Liquid Chromatography-Mass Spectrometry-Mass Spectrometry |
| M | Molar |
| mA | Miliampere |
| mg | Miligram |
| min | minute |
| ml | milliliter |
| mM | milimolar |
| MW | Molecular weight |
| NaCl | Sodium Chloride |
| PAGE | Polyacrylamind gel electrophoresis |
| rpm | revolution per minute |

| | |
|-------|---------------------------------------|
| RT | Room temperature |
| SDS | Sodium dodecyl sulfate |
| TEMED | N,N,N',N'-tetramethyl ethylenediamine |
| Tris | Tris(hydroxymethyl)amionmethane |
| U | Unit activity |
| V | Volt |
| V/V | Volumn by volumn |
| W/V | Weight/volumn |



ศูนย์วิทยทรัพยากร
จุฬาลงกรณ์มหาวิทยาลัย

CHAPTER I

INTRODUCTION

Abundantly plants contain carbohydrate-binding proteins that are called lectins, agglutinins or phytohemagglutinins as enzymes bind substrates and inhibitors, antibodies bind antigens. Lectins are protein or glycoprotein specific with least two sugar-binding sites per unit. These molecules are nonimmune origin and bind reversibly with specific sugar lectins were precipitate polysaccharide, glycoprotein and glycolipids (Goldstein *et al.*, 1980) because lectin as polyvalent or univalent carbohydrate-binding oligomeric proteins. The interaction of lectins at all surface sugar and sugar binding site on lectin molecules they are usually noncovalant, related hydrogen bonding, hydrophobic interactions and van der Waal's forces. In plant lectins were found widely distributed in the Leguminoseae such as kidney beans (Shi *et al.*, 2007), *Parkia Ja Vanica* beans (Utarabhand and Akkayanont 1995), *Dolichos lablab* (Lavanya *et al.*, 2006). The biological activities of lectins had displayed including anti-tumor (Pusztai 1998), immunomodulatory (Abdullaev and Mejia 1997), anti-fungal (Rubinstein *et al.*, 2004), anti-human immunodeficiency virus (HIV) (Herre *et al.*, 2004), and anti-insect activities (Barrientos and Gronenborn 2005).

Turmeric (*Curcuma longa* L.) belongs to the Zingiberaceae family which noteworthy members like ginger, cardamom and galangal. The genus *Curcuma* consists of hundreds of species of plants that cover rhizomes and underground root like stems. Turmeric is specially importance to humans that discovery its rhizome powder, when added to various food preparations, preserves their freshness and sense of a characteristic flavors. Turmeric belongs to a group of aromatic spices, had been originally used as a food additive in curries to improve the storage condition palatability and preservation of food. Turmeric are grown in warm, rainy regions of the world such as China, India, Indonesia, Jamaica and Peru (Govindarajan 1980) including southern and southeastern tropical Asia.

In medically, turmeric has been used internally as a stomachic, tonic and blood purified and externally in the prevention and treatment of skin diseases (The Wealth of India, 2001). Traditional Indian medicine claims the use of its powder against biliary disorders, anorexia, coryza, cough, diabetic wounds, hepatic disorder,

rheumatism and sinusitis (Ammon *et al.*, 1992). In the part turmeric has been used in clinical testing but in present its has proved the bactericidal properties of turmeric and now its use is more than being merely cosmetic (Khanna 1999). In this study has objective of this work is to undertake the purification and characterization of lectin from rhizome of *C. longa* and study on its biological activity. It is noted the activity of lectin from *C. longa* has not yet been reported.



ศูนย์วิทยทรัพยากร
จุฬาลงกรณ์มหาวิทยาลัย

CHAPTER II

REVIEW OF THE LITERATURES

2.1 The discovery of lectins

The lectin had been found by Stillmark in 1888 (Stillmark 1988) that the toxicity of castor bean extracts it presence of a proteinaceous hemagglutinating factor called ‘‘ricin’’. In 1898 Elfstrand introduced the term ‘‘hemagglutinin’’ as a common name for all plant proteins that clump blood cells (Elfstrand 1898). In the following decade, lectins had been reported for the first time the presence of nontoxic lectins in the legumes *Phaseolus vulgaris*, *Pisum sativum*, *Lens culinaris*, and *Vicia sativa* (Landsteiner and Raubitschek 1907). In the subsequent years, many nontoxic lectins were discovered and it became clear that plant lectins are widespread in the plant kingdom. The discovery that some hemagglutinins selectively agglutinated erythrocytes of a particular human blood group within the ABO system can be considered a milestone in the history of plant lectins. Only in 1952 lectins were shown that the agglutination properties of lectins are based on a specific sugar binding activity (Watkins and Morgan 1952).

Goldstein showed definition of lectins are carbohydrate binding proteins of nonimmune origin which agglutinate cells and/or precipitate glycoconjugates (Goldstein *et al.*, 1980). The nomenclature of plant lectins is very diverse. Since the early discovery plant lectins were usually designated by a trivial name, often a composite of an abbreviation of the (scientific) name of the source plant followed by the suffix -in (e.g., ricin from *Ricinus communis*). Other plant lectins were designated by three-letter abbreviations derived from the plant or plant material in which the protein was found (e.g. WGA, wheat germ agglutinin; PNA, peanut agglutinin).

2.2 Distribution of lectins

2.2.1 Bacterial lectins

Among the bacteria found to react with lectins are a variety of Gram-positive and Gram-negative organisms as well as the specialized forms, mycobacteria and mycoplasma. Hamada et al. reported that 13 of 15 strains of *Streptococcus mutans* tested were agglutinated by Con A (Hamada et al., 1977). The study surface features on membranes used by Con A in many organism such as Con A agglutinates a variety of Gram-negative bacteria, especially *Salmonella* spp. Certain R mutants of *Escherichia coli* and *Salmonella* spp. are also reactive with this lectin (Kato et al., 1979). The site of lectin binding is exposed sugars on the lipopolysaccharide (LPS) molecule. Another Gram-positive of *Staphylococcus aureus* is agglutinated by a lectin from the horseshoe crab distinct from limulin (Gilbride and Pistole 1979). Furthermore inhibition studies using D-Glucose and D-galactose (Percin et al., 2009), and precipitin reactions with polysaccharides derived from these organisms, indicated that different ligands on streptococcal cells from different serogroups were responsible for the interactions with Con A (Kashket and Guilmette 1975)

2.2.2 Fungal lectins

Over 40 years ago Sumner & Howell reported that cells of *Saccharomyces cerevisiae* (baker's yeast) were markedly agglutinated by lectin (James and Stacey 1936). Since then, numerous reports on the interaction of Con A with yeast and fungi have appeared. The major binding site for Con A in yeast or fungi is mannan in particular the α -linked D-Man residues. Although most studies on lectin *Saccharomyces* interactions have used Con A, at least one report indicates that WGA also binds to these yeast cells, presumably to the disaccharide di-N-acetylchitose found in the cell wall (Horisberger and Rosset 1976). Con A binds to *Candida albicans* (Barkai-Golan and Sharon 1978; Cassone et al., 1978; Jansons and Paktor 1977), *Candida utilis* (Barkai-Golan and Sharon 1978; Horisberger and Rosset 1977; Horisberger et al., 1976; Horisberger and Rosset 1977), and other *Candida* spp. (Barkai-Golan and Sharon 1978; Cassone, et al., 1978; Guillot et al., 1974; Jansons and Paktor 1977) via the mannan located in the cell walls of these microorganisms.

Many of the reports noted above involving *Saccharomyces* spp. have been similarly carried out with *Candida* spp.; the results are comparable for both yeast forms. Con A reacts with blastospores of *C. albicans*, again via mannan receptors. Cells from which mannan was extracted reacted poorly if at all with this lectin (Cassone *et al.*, 1978). In *Fusarium* spp. binding of RCA is seen only after trypsinization. KOH treatment also exposes receptors for this lectin on *F. roseum*, but not on *F. solani*, adding support to the idea that these related forms differ in their cell wall organization

2.2.3 Algal lectins

Although molecules with agglutinating activity have been found in a large number of marine algae, only a few have been studied in detail. A few species that have been investigated are *Pilota plumose*, *Agardhelia tenera*, *Cystoclonium purpuream*, *Gracilaria verrucosa*, *Palmaria palmate*, *Fucus vesiculosum*, *Codium fragile* (Fabregus and Carracedo 1989).

2.2.4 Viral lectins

The viral lectins have been discussed in detail by Sharon and Lis. Influenza virus possesses a glycoprotein molecule in the membrane that mediates binding (Sharon and Lis 1989). The carbohydrate binding site is a pocket located in a domain of the lectin protruding from the membrane and is composed of the amino acids that are largely conserved in many strains of viruses. Vlasak reported that the differences in the specificity of different strains of influenza viruses to bind to enzymatically modified erythrocytes carrying terminal *N*-acetyl α -neuraminic acid attached to D-galactose either by (2→3) or (2→6) linkages could be correlated with the species origin of the virus (Vlasak 1988). Thus, human isolates preferentially agglutinated resialylated erythrocytes containing an α -Neu Ac-(2→6)-D-Gal sequence, whereas the equine and avian isolates associate with α -Neu Ac-(2→3)-D-Gal.

2.2.5 Animal lectins

The occurrence of hemagglutinins in animals was noted quite early, almost all in invertebrates or lower vertebrates, but till the middle of the 1970s, only the three of these mentioned above (of eel, snail and horseshoe crab) were isolated and characterized. The first of the animal lectins shown to be specific for a sugar (L-fucose) was from the eel (Watkins and Morgan 1952). The isolation in 1974 of the first mammalian lectin, the galactose-specific hepatic asialoglycoprotein receptor, was an outcome of the investigation by Gilbert Ashwell at the N.I.H. together with Anatol G. Morell at the Albert Einstein Medical School, New York, of the mechanisms that control the lifetime of glycoproteins in blood circulation (Hudgin *et al.* 1974). At the same time Vivian Teichberg from our department reported (Teichberg *et al.*, 1975) the isolation from the eel of the first member of the family of the β -galactose-specific lectins, indicate as galectins (Barondes *et al.*, 1994). Since the beginning of the 1980s the number of purified animal lectins also started to grow fast, largely to the advent of recombinant techniques.

2.2.6 Plant lectin

Lectins have been found in a wide variety of species almost every major taxonomical classification of flowering plants (Allen and Brilliantine 1969; Mialonier *et al.*, 1973; Toms and Western 1971). Many plants and their individual tissues have been routinely screened for lectins by measuring the ability of their extracts to agglutinate erythrocytes. Although this hemagglutination assay has been of great value in detecting lectins, it is at best semiquantitative; it will not detect inactive or monovalent lectin, nor will it provide accurate estimates of lectin if an endogenous receptor for that lectin is present in the extract. The assay can at times yield false positive results because of nonspecific hemagglutination caused by lipids (Tsivion and Sharon 1981) or by polyphenols such as tannins (Kriipe 1956 and Makela 1957) that are often abundant in plant tissues. It is therefore advisable to verify positive hemagglutination data by inhibiting the activity with specific sugars or by isolating the lectin.

The carbohydrate specificities and structures of lectins from a large variety of plants have been studied in considerable detail (Goldstein and Hayes 1978; Goldstein

and Poretz 1985; Lis and Sharon 1981). In general, lectins from plants within particular taxonomical groups have distinctive properties that distinguish them from lectins of less closely related plants. It is important to note that the lectins used in these comparisons represent the most abundant and therefore most intensively studied lectins in the plants of these families. These lectins are not all derived from homologous tissues. These differences in origin must be remembered in interpreting these comparisons since, as is discussed below, it is possible that different tissues within the same plant may contain different lectins. This reservation does not apply to comparisons of lectins obtained from homologous tissues of plants within the same family. Homologies within two of these families, the Graminaceae and Leguminosae, are discussed in further detail below.

Graminaceae: The lectin from monocotyledonous plants is the wheat germ agglutinin, which is a 36,000 molecular weight dimer of identical protein subunits linked by interchain disulfide bonds (Nagata and Burger 1974; Rice and Etzler 1974). The complete amino acid sequence of this lectin has recently been determined (Wright *et al.*, 1984). This lectin has a specificity for oligomers of β (1 \rightarrow 4)-*N*-acetylglucosamine (Allen *et al.*, 1973). Lectins with similar specificities and molecular properties have been isolated from rye (Peumans *et al.*, 1982b) and barley embryos (Mishkind *et al.*, 1983; Peumans *et al.*, 1982b). Indeed, these lectins are so similar that they can undergo subunit exchange to form heterodimers (Peumans *et al.*, 1982a).

Leguminosae: The seeds of legumes are particularly rich in lectins, and many of these lectins have been characterized extensively (Goldstein and Hayes 1978; Goldstein and Poretz 1985; Lis and Sharon 1981). As this review was prepared, the complete amino acid sequences of concanavalin A (Edelman *et al.* 1972), favin (Cunningham *et al.*, 1979), and lectins from lentil (Foliers *et al.*, 1981), sainfoin (Kouchalakov *et al.*, 1984), *Phaseolus vulgaris* (Hoffman *et al.*, 1982), soybean (Hemperly *et al.*, 1982; Vodkin 1983), and pea (Higgins *et al.*, 1983) have been determined. In addition, the NH₂ terminal amino acid sequences of at least 15 other legume lectins are available (Strosberg *et al.*, 1983). Comparisons of these sequences have shown extensive homologies, particularly among those lectins from plants within the same tribes. It is clear that these lectins have been conserved during evolution of the legumes and that the homologies in their NH₂ terminal amino acid

sequences reflect the taxonomical relationships of the plants in this family (Foliers *et al.*, 1977; Foliers *et al.*, 1979; Strosberg *et al.*, 1983).

2.3 Isolate and purification of lectin

Purified lectins are essential for establish their molecular properties and are highly desirable for their many applications. In the past, lectins have been obtained solely from native sources, but they can now be produced also by recombinant techniques

2.3.1 From natural sources

Isolation of a lectin begins commonly with extraction of the tissue or organ in which it is present. This is simple in the case of plants, especially their seeds (Figure. 2.1) (Goldstein and Poretz 1986; Rudiger 1993). The seeds are ground and the meal obtained is extracted with a neutral buffer. Often it is advisable to pre-extract the dry meal with an organic solvent, such as petroleum ether, to remove colored materials derived from the seed coat and lipids that may be present in large amounts. Animal tissues are either homogenized directly in the extraction buffer or the tissue is extracted first with acetone to remove water and lipids. The extraction buffer should preferably contain protease inhibitors to prevent degradation of the lectin during purification, and, in the case of membrane bound lectins, a detergent as well.

Preliminary fractionation of the crude extract (e.g., by ammonium sulfate precipitation) is often done to obtain a protein fraction devoid of other constituents (e.g., polysaccharides in the case of plants). Final purification is achieved by affinity chromatography on a suitable adsorbent. A wide variety of affinity adsorbents, to suit any taste or purse, have been described in the literature and many of them can be purchased ready-made. These include polysaccharides such as Sephadex, a polymer of glucose employed for the purification of concanavalin A and pea lectin agarose (or Sepharose), a polymer of galactose, for the purification of the lectins from castor bean; acid-treated Sepharose for the purification of SBA; and chitin, a polymer of *N*-acetylglucosamine, for the purification of WGA. In the absence of readily available polysaccharides, use can be made of adsorbents consisting of carbohydrates or glycoproteins as such, or in the form of a synthetic derivative, that are covalently

attached to an insoluble carrier. For instance, lactose coupled to Sepharose is the reagent of choice the purification of the lectins from peanut, eel electric organ or calf heartmuscle. *N*-Acetylglucosamine bound to the same support serves for the purification of potato lectin and WGA, whereas immobilized porcine AH blood type substance is employed for the purification of the blood type A specific DBL and HPA. When working with lectins of an uncommon specificity, adsorbents have to be tailor made, as for example Sepharosebound asialoglycophorin for the purification of the blood type *N*-specific for lectin from *Vicia graminea*.

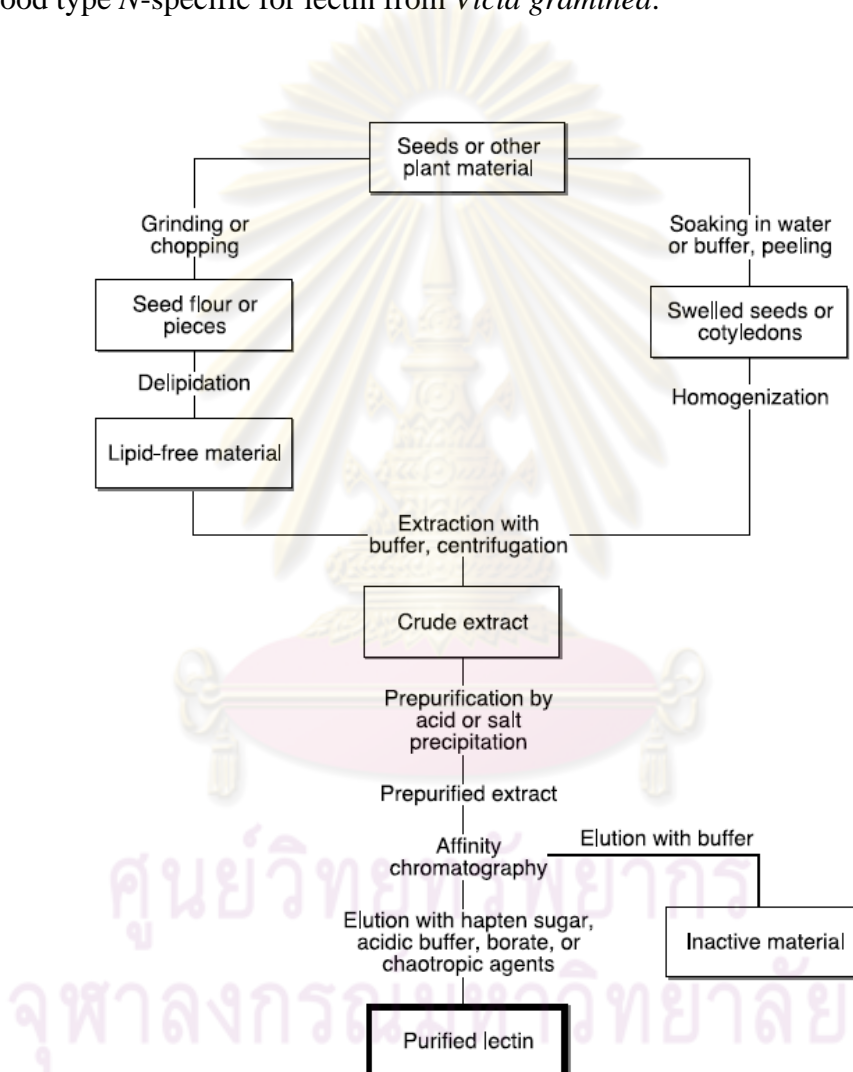


Figure 2.1 Scheme for lectin purification. reproduced with permission from Rudiger (Rudiger 1993)

2.3.2 By recombinant techniques

An alternative approach for the preparation of lectins has been made possible by the advent of recombinant DNA technology. It is based on the isolation of the cDNA or genomic DNA of the lectin, its insertion into a suitable vector and expression in an appropriate host cell. Isolation of the cDNA requires knowledge of at least part of the primary sequence of the lectin itself or of a structurally similar one. By this technique, several plant lectins, among them of pea (Stubbs *et al.*, 1986; Van Eijsden *et al.*, 1992), *Erythrina corallodendron* (Arango *et al.*, 1993), peanut (Sharma and Surolia 1994) and *Griffonia simplicifolia* (Zhu *et al.*, 1996) have been expressed in *E. coli*. Expression of plant lectins was also achieved in other systems, e.g. WGA in *Saccharomyces cerevisiae* (Nagahora *et al.*, 1992), PHA and GNA in *Pichia pastoris* (Raemaekers *et al.*, 1999), PNA in insect cells (Kumar *et al.*, 1999) and SBA in monkey cells (Adar *et al.* 1997); (for a more complete listing of recombinant plant lectins) (Streicher and Sharon 2003).

2.4 Biological activities of lectins

2.4.1 Assays for hemagglutinating

The agglutinating activity of lectins is usually measured with erythrocytes, using the serial 2-fold dilution technique, the endpoint is determined either visually or spectrophotometrically. Since the visual determination is a subjective operation, significant variations in the results may occur even in the same laboratory. The spectrophotometric method is more accurate, but also more laborious, requires larger amounts of material, and is used only in a limited number of laboratories. An additional difficulty in comparing hemagglutinating activities of lectins stems from the fact that different types of erythrocytes are used in different studies, e.g. human A, B, or O type, or rabbit, either untreated or after treatment with trypsin (the latter treatment increases markedly the sensitivity of the cells to agglutination). However highly purified lectins will, under suitable conditions, exhibit hemagglutinating activity at concentrations as low as 0.1 µg/ml (Irvin 1976).

2.4.2 Lectins with anti-viral activity

Diverse plant lectins exhibit a markedly inhibitory effect on animal and human viruses *in vitro*. For example, the chitin-binding lectin from stinging nettle (*Urtica dioica*) and the mannose-specific agglutinins from Amaryllidaceae and Orchidaceae species are potent inhibitors of the infection of target cells with retroviruses such as the human immunodeficiency virus and cytomegalovirus (Balzarini *et al.*, 1991; Balzarini *et al.*, 1992).

2.4.3 Lectins with anti-bacterial activity

Recent observations with regard to the binding of plant lectins to components of the bacterial cell wall peptidoglycans (such as muramic acid, *N*-acetylmuramic acid, *N*-acetylglucosamine and muramyl dipeptides) revealed that seed lectins from several legume species strongly interact with these bacterial surface carbohydrates (Ajouba *et al.*, 1994). Evidently, the observation that legume seed lectins can recognize and bind to the bacterial cell wall does not imply that such an interaction occurs *in vivo* and certainly does not prove that these lectins are involved in the protection of the seedlings against bacteria.

2.4.4 Lectins with anti-fungal activity

In 1975 Mirelman *et al.* was found wheat germ agglutinin (WGA) can be inhibits spore germination and hyphal growth of *Trichoderma viride* and interferes with the synthesis of chitin (Mirelman *et al.*, 1975). A novel mannose-binding lectin was purified from rhizomes of *Ophiopogon japonicus* was showed antifungal activity in three phytopathogenic fungi namely *Gibberella saubinetii* and *Rhizoctonia solani* (Tian *et al.*, 2008)

2.4.5 Lectins with anti-insect properties

In 1976 Janzen and his collaborators observed the phytohemagglutinin (PHA) from black beans (*Phaseolus vulgaris*) exhibited an insecticidal action on the bruchid beetle *Callosobruchus maculatus* (cowpea weevil) (Janzen *et al.*, 1976). Interestingly,

the R-amylase inhibitor which is a potent inhibitor of insect R-amylases it is structurally related to PHA, although it has no carbohydrate-binding properties (Moreno *et al.*, 1990; Moreno and Chrispeels 1989). Moreover, besides the R-amylase inhibitor, some wild accessions of beans contain arcelin, another PHA-like protein, which was shown to be toxic for the bean weevil (*Zabrotes subfasciatus*) (Osborn *et al.*, 1988). It appears, therefore, that beans do not rely on lectins for their defence against insects but rather on lectin related proteins.

2.4.6 Plant lectins with toxicity for higher animals

Many plant lectins are toxic to animal cells but not all. Lectins consumed in the diet may be innocuous; if it had been denatured by cooking and proteolytically digested upon consumption. However raw lectins can have deleterious effects, since uncooked lectins are extremely stable to proteases. For example consumption of raw beans not alters the intestinal microflora and results in gastrointestinal dysfunction. Raw soybean lectin and wheat-germ agglutinin induce release of cholecystokinin, suggesting that these types of lectins may have direct effects on gastrointestinal function and growth. While the experiment of Pereira *et al.* was extraction and purification of cassava leaf agglutinin and injected intraperitoneal via in mice. The results showed no deaths or any adverse effects were observed after 120 h (Pereira *et al.*, 2008).

2.5 Sugar binding activity and specificity of plant lectins

Broadly reveal, lectins can be divided into those that bind monosaccharides as well as oligosaccharides, and those that recognize oligosaccharides only (Wu *et al.*, 2001). It is noteworthy that almost all saccharides recognized by lectins are typical constituents of animal cell surfaces. This is perhaps a reflection of the method commonly used for lectin detection (Tsivion and Sharon 1981), as a result of which lectins recognizing sugars not present on erythrocytes might have been overlooked.

2.5.1 Mannose/glucose

A lectin with specificity for mannose and glucose residues has been isolated in crystalline form from the fava bean (*Vicia faba*) by a procedure which included absorption to Sephadex. It has a molecular weight of 50,000 Da and appears to be a tetramer made of two subunits of 18,000 Da and two subunits of 9,000 Da. These studies determine amino acid sequence and three-dimensional structure of lectin were similar with structural features of Concanavalin A (Irvin 1976)

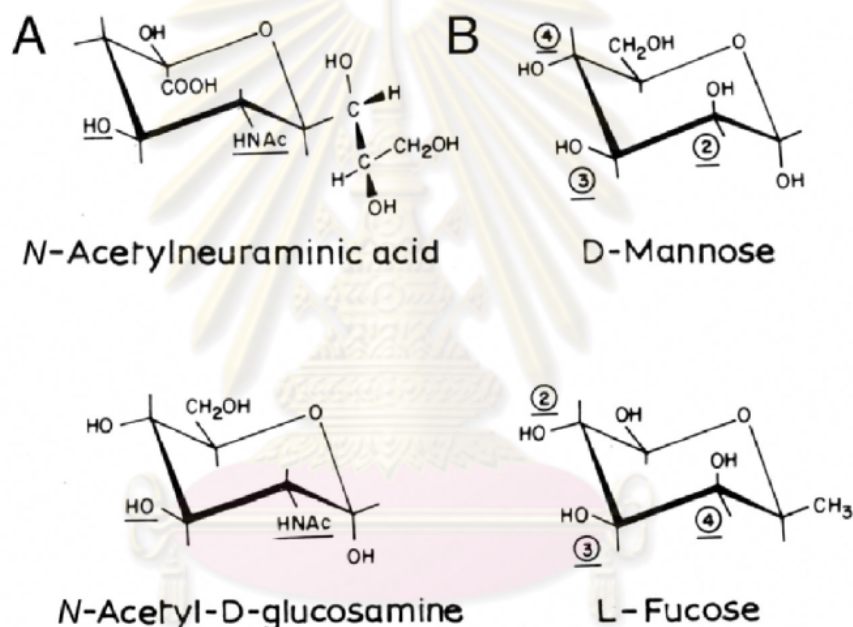


Figure 2.2 Common structural features of *N*-acetylneuraminic acid and *N*-acetylglucosamine (A) and of mannose and fucose (B). Similarity of *N*-acetylglucosamine and *N*-acetylneuraminic acid at positions C-2 (acetamido) and C-3 (hydroxyl) of the pyranose ring is observed when the sialic acid molecule is suitably rotated. Rotation of the fucose molecule by 180° allows superimposition of its ring oxygen, 4-OH, 3-OH and 2-OH with the ring oxygen, 2-OH, 3-OH and 4-OH of mannose, respectively. Groups that thus occupy the same positions in space are underlined. (Sharon and Lis 1993)

2.5.2 Galactose/*N*-acetylgalactosamine

As mentioned, lectins interact with galactose or *N*-acetylgalactosamine such as the lectin from the corn coleoptyle. It is a glycoprotein that had a molecular mass under non-denaturing conditions of 88.7 kDa and had carbohydrates that constituted 12% of the total weight, comprising galactose, mannose, and *N*-acetyl-D-glucosamine (Martinez-Cruz *et al.*, 2001). In 2003 Konozy *et al.* were found *Erythrina speciosa* seeds can be specific with D-galactose and had two identical subunits of molecular mass of 27.6 kDa. The lectin was a neutral carbohydrate with a content of 5.5% (Konozy *et al.*, 2003). *N*-acetyl-D-galactosamine-specific lectin isolation from *Glycine max* L. Merrill SA88. They were found the soybean lectin consists of four subunits with a molecular weight of each 30,000 Da in one-step purification with high purity and high yield (about 90% recovery from the crude extract) by using Poly(hydroxypropyl methacrylate-glycidyl methacrylate) beads as an affinity matrix and *N*-acetyl-D-galactosamine (GalNAc) as an affinity ligand (Percin *et al.*, 2009).

2.5.3 Fucose

Aleuria aurantia lectin (AAL) is a commercially available lectin that is known for its high affinity for α -1,6-fucosylated oligosaccharides and it is widely used to estimate the extent of α -1,6-fucosylation on glycoproteins and to fractionate glycoproteins. For research a novel probe for core fucose from *Aspergillus oryzae* L-fucose-specific lectin (AOL) has the strongest preference for the α -1,6-fucosylated chain among α -1,2-, α -1,3-, α -1,4-, and α -1,6-fucosylated pyridylaminated (PA)-sugar chains. These results suggest that AOL is a novel probe for detecting core fucose in glycoproteins on the surface of animal cells (Matsumura *et al.*, 2007). Furthermore, *Lotus tetragonolobus* lectin is a fucose-specific legume lectin. It is a homotetramer composed of four legume lectin domains with a molecular mass of 27,800 Da (Moreno *et al.*, 2008).

2.5.4 Sialic acids

Most of Sialic acid-specific lectins was found in invertebrates such as those from the Indian horseshoe crab (Mohan *et al.*, 1982), marine crab *Scylla serrata* (Mercy and Ravindranath 1992), lobster, tunicalase, fungus *Hericium arinaceum* (Kawagishi *et al.*, 1994) and leaves of mulberry (Ratanapo *et al.*, 1998). A lectin from the white shrimp *Litopenaeus setiferus* (LsL) hemolymph is a heterotetramer of two 80 kDa and two 52 kDa subunits, *N*-acetylated sugars, such as GlcNAc, GaINAc, and NeuAc, were the most effective inhibitors of the LsL hemagglutinating activity. Desialylation of erythrocytes or inhibitory glycoproteins abolished their capacity to bind LsL, confirming the relevance of sialic acid in LsL-ligand interactions (Alpuche *et al.*, 2005). In 2009 the *Phaseolus coccineus* lectin (PCL) specificity towards sialic acid showed the molecular mass of 30 kDa consisting of homodimer subunits. Moreover the purified PCL was devoid of antifungal activity against *C. albicans* and *P. italicum*, but markedly inhibited the growth of *H. maydis*, *Rhizoctonia solani*, *G. sanbinetti*, *S. sclerotiorum* while the same concentration of PCL decrease the 50% hemagglutinating activity was inhibited by sialic acid it suggesting a significant correlation between sialic acid-specific site and its bi-functional bioactivities (Chen *et al.*, 2009).

2.6 Lectins in edible plants

Many lectin-containing plants are common constituents of the diet of humans and farm animals. Since lectins are known to act on cells in a variety of ways, such as agglutination, mitogenic stimulation and killing, and they are often resistant to heat and proteolytic enzymes, including those of intestinal bacteria, the effects of consumption of these proteins deserve special consideration. (Liener 1986) For many years it has been known that they occur in legumes such as soybeans, kidney beans, lima beans, mung beans, lentils, garden peas and peanuts that are a major food source for humans and animals in one part of the world.

Although lectin containing foods are frequently consumed in cooked or otherwise processed form, such treatments may not always be adequate to completely inactivate the lectins present. Thus, lectins have been detected in roasted peanuts

(Wang *et al.*, 1999). Slow cooking of beans, without boiling, does not always eliminate lectin activity as observed with kidney beans cooked for 11 hr at 82 °C or for 5 hr at 91 °C. The stability of plant lectins in the stomach is evidenced, for example, by the finding that when concanavalin A, PHA or WGA were intragastrically administered into rats between 50 and 90% of the lectin was recovered after 1 hr from the stomach by homogenizing the tissue in phosphate-buffered saline containing the appropriate specific sugar (Pusztai and Bardocz 1995). Moreover, in the few experiments with humans that ate lectin-containing foods, namely tomatoes (Kilpatrick *et al.*, 1985), red kidney beans (Pusztai *et al.*, 1989) or peanuts, either raw or roasted (Wang *et al.*, 1999) the lectins have not only withstood the acidity and the proteolytic enzymes of the intestinal tract, but a significant proportion of the amount ingested has reached the circulatory system with unimpaired hemagglutinating and immunological activities. In rodents, a diet containing lectins provoked intestinal and systemic immune responses to these proteins (Gomez *et al.*, 1995). Furthermore, human serum was found to contain antibodies to the lectins of peanut, soybean and wheat germ (Tchernychev and Wilchek 1996)

2.7 Family of Zingiberaceae

The plants members of Zingiberaceae family are notice characterized by their tuberous rhizomes its have strong aromatic and medicinal properties. It is usually found as ginger, and exists in about 50 genera and 1,300 species worldwide, distributed mainly in South and Southeast Asia (Wu and Larsen 2000). The medicinal functions for treatment of diseases such as diarrhea, coryza, dermatosis disorders and rheumatism are also widely mentioned in traditional remedies (Ammon *et al.*, 1992; Charles and Charles 1992; Miquel *et al.*, 2009; Skrzypezac-Jankun *et al.*, 2000). Many essential oils had accessories of Zingiberaceae plants including terpenes, alcohols, ketones, flavonoids, carotenoids and phytoestrogens (Habsah *et al.*, 2000; Mau *et al.*, 2003; Suhai 2006). For example, the water extract of *Zingiber officinale* showed 6-Gingerol, and was mostly found in the rhizome in concentrations of 130-7,138 ppm. The major compound in *Curcuma* is curcumin, which has concentrations as high as 38,000 ppm in species (Suhai 2006). Besides Curcuminoids, gingerols and kava pyrones isolated from Zingiberaceous plants have been reported for their

biological activities in antifungal, antioxidant, insecticidal, and anti-inflammatory activities (Sirat 1994; Sirat *et al.*, 1996; Sirat and Liamen 1995).

2.8 Species of *Curcuma longa* Linn

Curcuma longa L. rhizomes or tumeric or chemical extract called curcumin. They are perennial herb belonging to the ginger family. Turmeric measures up to 1 m high with a short stem and tufted leaves. The distribution of tumeric was a tropical plant native to southern and southeastern tropical Asia especially South Asia mainly India such as Andhra Pradesh and Tamil Nadu. India produces 600,000 tons of turmeric annually which is 75% of world production of 800,000 tons. Turmeric extract is a yellow-orange powder that is insoluble in water and ether but soluble in ethanol, dimethylsulfoxide, and acetone. Three Chemical constituents of *C. longa* are 77% curcumin I, 17% curcumin II (Demethoxycurcumin) and 3% curcumin III (Bis-Demethoxycurcumin: less active). The structure of curcumin $C_{21}H_{20}O_6$ it has a melting point of 183 °C and a molecular weight of 368.37 g/mol. Curcumin is stable at acidic pH but unstable at neutral and basic pH, under which conditions it is degraded to ferulic acid and feruloylmethane.



Figure 2.3 Rhizome of *Curcuma longa* Linn.

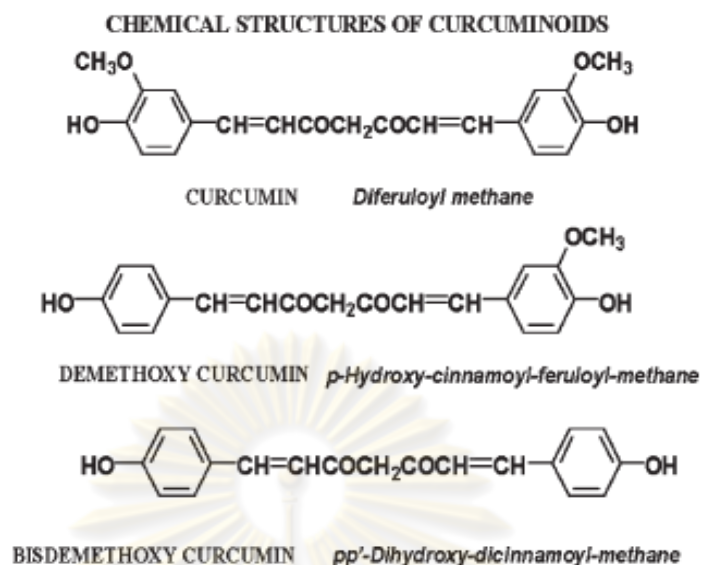


Figure 2.4 Chemical structures of curcumin, demethoxy curcumin and bisdemethoxy curcumin (Maheshwari *et al.*, 2005)

Tumeric has been widely used for consume in varies centuries such as added to various food preparations, preserves their freshness and imparts a characteristic flavour. Specific nutritional facts of tumeric in 100 g of edible turmeric contain 65 Kcal of total energy, 1.2 g of protein, 1.4 g of lipid, 11.4 g of carbohydrate, 9 g of calcium, 41 g of phosphorous, 2.3 g of iron, 0.02 g of vitamin B1, 0.03 g of vitamin B2, 1.3 g of niacin, and 12 g of vitamin C. (Onmettaaree 2005). Report of the pharmacological activities of curcumin including anti-inflammatory (Satoskar *et al.*, 1986; Srimal and Dhawan 1973), anti-cancer (Kuttan *et al.*, 1985), anti-oxidant (Sharma 1976; Toda *et al.*, 1985), wound healing (Sidhu *et al.*, 1998) and anti-microbial effects (Negi *et al.*, 1999).

Some research has demonstrated curcumin's ability to inhibit carcinogenesis at three stages: tumor promotion, angiogenesis and tumor growth. Curcumin suppresses mitogen-induced proliferation of blood mononuclear cells, inhibits neutrophil activation and mixed lymphocyte reaction and also inhibits both serum-induced and platelet derived growth factor (PDGF)-dependent mitogenesis of smooth muscle cells (Huang *et al.*, 1992). It has also been reported to be a partial inhibitor of protein kinase (Aggarwal *et al.*, 2003; Liu *et al.*, 1993). The other salient feature of

turmeric/curcumin is that despite being consumed daily for centuries in Asian countries, it has not been shown to cause any toxicity (Ammon and Wahl 1991).



ศูนย์วิทยทรัพยากร
จุฬาลงกรณ์มหาวิทยาลัย

CHAPTER III

EXPERIMENTAL

3.1 Chemicals

Acarbose (Glucobay-Bayer, Germany)
Acetic acid (Merck Ag Darmstadt, Germany)
Acrylamind (Plusone Pharmacia Biotech, Sweden)
Agar (Difco, USA)
Alpha Glucosidase (Sigma, USA)
Ammonium persulfate (Plusone Pharmacia Biotech, Sweden)
Ammonium sulfate (Merck Ag Darmstadt, Germany)
Barium chloride (Merck Ag Darmstadt, Germany)
Beef extract (Difco, USA)
Bis-acrylamide (Promega, USA)
Bovine serum albumin (Sigma, USA)
Bromophenol Blue (USB, USA)
Calcium Chloride (Merck Ag Darmstadt, Germany)
Cobalt chloride (Fluka, Switzerland)
Con A sepharose 4B (Sigma, USA)
Copper sulfate (Fluka, Switzerland)
Coomassie Brilliant Blue G-250 (USB, USA)
Copper sulfate (Fluka, Switzerland)
D-Glucose (Fluka, Switzerland)
Ethylenediaminetetraacetic acid, EDTA (Sigma, USA)
Ethanol (Merck Ag Darmstadt, Germany)
Ferric chloride (Merck Ag Darmstadt, Germany)
Glycerol (Fluka, Germany)
Glycine (Sigma, USA)
Hydrochloric acid (J.T. Baker, USA)
Manganese Chloride (Sigma, USA)
Magnesium sulfate (Fluka, Switzerland)

Malt extracts (Difco, USA)
Mercury chloride (Merck Ag Darmstadt, Germany)
Methanol (Merck Ag Darmstadt, Germany)
Methy- α -D-glucopyranoside (Sigma, USA)
2-mercaptoethanol (Merck Ag Darmstadt, Germany)
N, N'-methylene-bis-acrylamide (Plusone Pharmacia Biotech, Sweden)
p-nitrophenol (sigma,U.S.A)
p-nitrophenol- α -D-glucopyranoside, PNPG (Sigma, USA)
Peptone (Pronadisa-Conda, Spain)
Phenol (Merck Ag Darmstadt, Germany)
Phosphoric acid (Mallinckrodt Chemicals, USA)
Sodium acetate (Merck Ag Darmstadt, Germany)
Sodium carbonate (Merck Ag Darmstadt, Germany)
Sodium chloride (Merck Ag Darmstadt, Germany)
Sodium Dodecyl sulfate (Plusone Pharmacia Biotech, Sweden)
Sodium hydroxide (Merck Ag Darmstadt, Germany)
Standard Molecular Weight Marker (Sigma, U.S.A)
Sulfuric acid (J.T. Baker, USA)
Tetramethylethylenediamine, TEMED (Plusone Pharmacia Biotech, Sweden)
Tris (USB, U.S.A)
Yeast extract (Bio Basic, Canada)
Zine Sulfate (Merck Ag Darmstadt, Germany)

ศูนย์วิทยทรัพยากร
จุฬาลงกรณ์มหาวิทยาลัย

3.2 Equipment

Affinity Column Chromatography (AKTA prime, Amersham Pharmacia Biotech, Sweden)

Autoclave (Isuzu, Seisakushu Co., Ltd., Japan)

Autopipette (Pipetman, Gilson, France)

Dialysis bag (Snake Skin Dialysis Tubing, Pierce, U.S.A)

Electrophoresis unit (Hoefer mini VE, Amersham Pharmacia Biotech, Sweden)

Freeze dryer (Labconco, U.S.A)

High Speed Refrigerated Centrifuge (Kubota 6500, Japan)

Hot air oven (Mettmert, Germany)

Hot plate stirrer (HL instrument, Thailand)

Laminar Flow (Safety Lab, Asian Chemical and Engineering Co., Ltd., Thailand)

Microcentrifuge (Biofuge pico Heraeus, Kendro, Germany)

Orbital Shaker (OS-10 Biosan, Latvia)

pH meter (Mettler Toledo, U.S.A)

Pipette tips (Bioline, U.S.A)

Power Supply (EPS 301 Amersham Pharmacia Biotech, USA)

Refrigerated incubator shaker (Innova 4330, USA)

Sonicate (DHA-1000, Branson, U.S.A)

Spectrophotometer (Synergy HT Biotek, USA)

Speed vacuum centrifuge (Heto-Holten, Denmark)

96-well microtiter plate (Costar, USA)

Vortex mixer (Vortex-Genie2, Scientific Industries, U.S.A)

Water Bath (NTT-1200 Tokyo kikakikai, Japan)

3.3 Plant material

Rhizomes of *C. longa* purchased from the local market (Bangkok, Thailand). A voucher specimen (BK60689) is deposited at the Bangkok Herbarium (BK) of The Plant Variety Protection Division, Department of Agriculture, Thailand.

3.4 Blood Sample

Human blood cells (A, AB, B and O) of healthy donors obtained were kindly offered by the National Blood Center, Thai Red Cross Society. Rabbit, mouse, rat, guinea pig, goose and sheep blood cells were purchased from the National Laboratory Animal Center, Mahidol University. The blood sample were centrifuged at 5000 rpm for 5 min at 4°C then supernatant discard and washed in Tris-buffered saline (TBS) replete in 3 time and either used immediately or stored for up to 4 weeks at 4°C

3.5 Microorganisms

- Tested microorganisms

Bacillus subtilis ATCC6633 (Gram positive bacteria)

Staphylococcus aureus ATCC 25923 (Gram positive bacteria)

Escherichia coli ATCC 25922 (Gram negative bacteria)

Pseudomonas aeruginosa ATCC 27853 (Gram negative bacteria)

Candida albican ATCC 10231 (fungi)

Exserohilum turcicum (fungi)

Fusarium oxysporum (fungi)

Colectrotrichum cassiicola (fungi)

- Positive Control

Penicilin 1mg/ml

Amplicilin 1mg/ml

Ketoconazole 200 mg/ml

- Growth of microorganisms

B.subtilis, *S.aureus*, *E.Coli* and *P. aeruginosa* were growth on nutrient broth (Alpuche, J., et al., 2005) and nutrient agar (NA) at 37°C and were maintained in NA at 4°C. Their stocks were kept in NB with 10% sterile glycerol at -70°C.

C.albican was grown on yeast-malt medium (YM) and yeast-malt broth (YMB) at 30°C. It was maintained and kept as above with YM and YMB with 10% sterile glycerol.

3.6 Lectin Purification

All of the procedures were performed at 4°C, unless otherwise stated.

(i) *Protein extraction and (NH₄)₂SO₄ precipitation.* Rhizomes of *Curcuma longa* (400g) were peel off and cut. After that it was homogenized in 20 mM Tris-HCl buffer, pH 7.2, containing 0.15 M NaCl using a blender. The homogenate was extracted with isolation buffer (1L) by stirred overnight then filtered through cheesecloth and centrifuged at 8,000 rpm for 30 min. The supernatant were added with ammonium sulfate to give 80% saturation, and then stirred overnight. The suspension was collected by centrifugation at 8,000 rpm for 30 min and then supernatant was discarded. The precipitate was dissolved in 20 mM Tri-HCl buffer, pH 7.2 and then desalted by dialysis with the same buffer over 24 hour.

(ii) *Affinity chromatography.* The crude solution was applied to a Con A sepharose (1.6 x 20 cm) installed in an AKTA prime instrument equilibrated with buffer A (20 mM Tris-HCl buffer, pH 7.2, containing 0.15 M NaCl). The column was washed with 100 ml of buffer A (2.0 M Methyl α -D-glucopyranoside) to remove unbound proteins. And then bound proteins were eluted with Buffer B at a flow rate of 1.5 ml/min. The bound protein was dialyzed against distilled water for 24 h at 4 °C and freezes dry.

3.6.1 Determination of protein concentration

The protein which was obtained during purification process was determined the concentration using Bradford assay (Bradford 1976). Bovine serum albumin (BSA) was used as the standard. For the calibration curve, the solution of 1 mg/ml of BSA were pipetted triplicate volumes at 2.5, 5, 7.5, 10, 12.5, 15, 17.5, 20 μ L into microcentrifuge tubes, and then was adjusted volume to 100 μ L with 20 mM Tri-HCl buffer, pH 7.2. Pipette the 100 μ l of same buffer was used as blank. Then 10 μ l standard solution and protein sample was added to 96 well-microtiter plate and then 100 μ l of Bradford reagent was added to all well. Finally, the samples and standards solution was measured the absorbance at 595 nm. The calibration curve was prepared and the concentration of protein was calculated.

3.7.4 Carbohydrate content

The phenol sulfuric acid method was originally described as a nonspecific quantitative test for carbohydrate which that solution gives a brown color (Dubois *et al.*, 1956). This method can be used for the quantitative colorimetric micro determination of monosaccharide and their polymerization product, such as oligosaccharides and polysaccharide. Glucose was used as the standard. For the calibration curve, pipette triplicate volumes of 5, 10, 15, 20, 25, 30, 35, 40, 45 and 50 μ L of 1 mg/ml glucose standard solution into test tubes, and adjust the volume to 1 ml with sterile water while sample was add 200 μ l in test tube. To the each test tube were added consecutively 1 ml of 5% phenol solution and 10 ml of concentrated H₂SO₄ rapidly. All additions to the test tubes were made with mixing well. Hold on the solution in room temperature about 10 minutes and bring to ice box about 5 minutes. Then add 200 μ l of standard solution and sample solution to 96 well-microtiter plate. Finally Measure the absorbance at 490 nm of the samples and standards solution compare with 200 μ l of sterile water into a plate for the reagent blank, plot calibration curve x-axis is glucose concentration and y-axis is absorbance.

3.7.5 Determination of protein pattern on native-PAGE

Proteins from each step of purification were subjected for analysis of native protein pattern according to the method of Bollag (Bollag *et al.*, 1996).

Non-denaturing gel electrophoresis. The gel was carried out with 7.5% separating gel, and 5.0% stacking gel. Tris-glycine buffer pH 8.3 was used as the electrode buffer. The electrophoresis was run from cathode toward anode at a constant current of 20 mA per slab at room temperature in a Mini-Gel Electrophoresis unit. After electrophoresis, protein in the gel were visualized by coomassie Blue R-250 staining and destaining.

Coomassie blue staining and destaining. The gel was staining solution consist of 0.1% (w/v) coomassie Blue R-250 in 10% (v/v) acetic acid and 45% (v/v) methanol. Destaining was performed by immersing the gel in de-staining solution consist of 10% (v/v) acetic acid and 45% (v/v) methanol) followed by several changes of destaining solution unit the background was clear.

3.7.6 Hemagglutination assay

Fresh rabbit erythrocyte had been washed and make to 3% rabbit erythrocyte by 20 mM Tris-HCl buffer, pH 7.2. Hemagglutination assay was carried out in a microtiter plate following a two-fold serial dilution method. The lectin solution (50 μ l) was place in the first well and serially dilute into the successive well with the same buffer. Then, 50 μ l of 3% rabbit erythrocyte suspension was added to the entire well. Hemagglutination was visualized in the plate after 1 h of incubate at 37°C (Wong *et al.*, 2006). Titer define as the reciprocal of the highest dilution exhibiting hemagglutination, was considered equal to one hemagglutination unit. Specific activity was started as the number of unit per mg of lectin (Tiphara *et al.*, 2007).

3.8 Biochemical characterization lectin from *C. longa*

3.8.1 Molecular weight determination

The purified lectin was subjected to sodium dodecyl sulfate–polyacrylamide gel electrophoresis (SDS-PAGE) for molecular mass determination. The gel was prepared with 0.4% in 15% separating gels (pH 8.8) and 5% stacking gel (pH 6.8). Tris-glycine buffer pH 8.3 containing 0.1% SDS was used as the electrode buffer. The SigmaMarker™ wide molecular weight range used as the protein marker. Discontinuous SDS-PAGE in reducing condition (in the present of β -mercaptoethanol) was performed according to the procedure of Laemmli (Laemmli, U.K., 1970). Sample to be analyzed were treated with sample buffer and boiled for 5 min before application to the gel. Electrophoresis was run from the cathode to anode at constant current of 20 mA per slab at room temperature in a Mini-gel Electrophoresis unit. High and low molecular weight standards were used to determine the subunit molecular weight standards were used to determine the subunit molecular weight of the enzyme. After electrophoresis, protein in the gel were visualized by staining with Coomassie Blue R-250 and de-stain in solution of 10% methanol 10% acetic acid in water until band appeared

3.8.2 Blood group specificity

Human blood of groups A, B, AB and O collected from four donors and animal blood (rabbit, mouse, rat, guinea pig, goose and sheep) were used for checking the blood group specificity of the lectin. A serial twofold dilution of the lectin solution (50 μ l) in microtiter U-plates was mixed with 50 μ l of Tris-HCl buffer (pH 7.2) and add 3% suspension of human and animal blood cells in each well. The results were read after about 1 h when the blank had fully sediment. The hemagglutination titer, defined as the reciprocal of the highest dilution exhibiting hemagglutination, was reckoned as one hemagglutination unit or one titer. Specific activity is the number of hemagglutination units per mg protein.

3.8.3 Effect of temperature on lectin activity

The lectin solution was heated in a multiblock heater from 25 °C (RT) to 100 °C, at intervals of 10 °C, for a period of 30 min. The residual hemagglutinating activity was assayed after adjusting the temperature to 4°C compare with control, which was the sample solution incubate at room temperature was considered to be 100% activity. At least three replicates were done for each test to confirm the results. The inactivation kinetics of the protein was performed using lectin solution heating from 40 to 70 °C at intervals of 10 °C in a multiblock heater. Agglutination activity was checked every 10 min using a 50 μ l aliquot over a period of nearly 2 hour after adjusting the temperature to 4°C. An aliquot taken before heating served to estimate as control, which was considered to be 100% activity.

3.8.4 Effect of pH on lectin activity

Incubating the protein with buffer from pH 2-14 assessed the pH stability and pH optimal of the lectin. The buffer used were 20mM glycine-HCl (pH 2-4), 20mM Sodium acetate (pH 4-6), 20mM Potassium phosphate (pH 6-8), 20mM Tris-HCl (pH 8-10) and 20mM glycine-NaOH (pH 10-12). The purified lectin was mixed to difference buffer (lectin: buffer = 1:1 v/v). After being left for 1 hour at room temperature, the samples were adjusted back to pH 7.2 with 20 mM Tris-HCl pH 7.2 (sample : Tris-HCl = 1:4) and assay for agglutinating activity compare with control,

which was the lectin solution mixed with Tris-HCl buffer pH 7.2 and left standing for 1 hour at room temperature was considered 100%.

3.8.5 Effect of metal ion

The effect of metal ion and chelating agent on hemagglutinating activity was investigated. The purified lectin (1 mg/ml) was incubated for 24 hour in a various concentrations (12.5, 25, 50, 100 mM) of metal solution; Hg^{2+} , Ca^{2+} , Co^{2+} , Mn^{2+} , Mg^{2+} , Fe^{2+} and EDTA with continuous shaking. Agglutination assay was performed as mentioned earlier.

3.8.6 Internal amino acid sequence of lectin by LC-MS/MS

The internal amino acid sequence of the purified lectin from *C. longa* was performed by in-gel digestion of the protein and sequencing of the different peptides by mass spectrometry. The ion spectra were analyzed and the sequence determined. The analysis was performed at the Genome institute, National Center for Genetic Engineering and Biotechnology, Pathumthani, Thailand. Sequence comparison of internal peptides of lectin with those of the lectin family was performed using individual peptides. Peptide matching from sample mass spectra was based on an accuracy of ± 1 Da peptide. Amino acids were matched to the SWISSPROT data.

ศูนย์วิทยทรัพยากร
จุฬาลงกรณ์มหาวิทยาลัย

3.9 Other biological activity testing

3.9.1 Alpha-glucosidase inhibitory activity

α -glucosidase activity assay was developed according to Boonmee (Boonmee *et al.*, 2007). α -glucosidase was assayed using 50mM Sodium acetate buffer at pH 5.5 and 1mM *p*-nitrophenyl- α -D-glucopyranoside (PNPG) 20 μ l was used as substrate. The concentration of the enzyme was 1 Unit/ml in each incubate (20 μ l) in 0.077 mg/ml of purified lectin in 20mM Tris-HCl buffer at pH 7.2 and incubate at 37°C for 10 min. 20 μ l of 1mM PNPG was then added to the mixture to initiate the enzyme reaction. The reaction was incubated at 37°C for 30 min and stopped by adding 100 μ l of 1M Na₂CO₃. α -Glucosidase activity was determined by measuring release of the yellow *p*-nitrophenol at 400 nm. One unit of α -glucosidase is defined as the amount enzyme liberating 1.0 μ mole of *p*-nitrophenol (PNP) per minute under the conditions specified. 6.8 mg/ml acarbose was used as the positive control in this study.

$$\% \text{ Inhibition} = \frac{100 - (\text{Abs of sample} - \text{Abs of blank})}{\text{Abs of control}} \times 100$$

Abs = Absorbance at 405 nm
Control = no sample in experiment
Blank = buffer

Half Inhibition Concentrations (IC₅₀) of the extracts were determined by constructing a dose-response curve and examined the concentrations of concentration that inhibited 50% of enzyme activity. IC₅₀ is less corresponding to show high α -glucosidase inhibition. (Tunsaringkarn *et al.*, 2008)

3.9.2 Assay of antifungal activity

The assay of *C.longa* lectin for antifungal activity toward *Exserohilum turanicum*, *Fusarium oxysporum*, and *Colectrotrichum cassiicola* was carried out in 90x15 mm petri plates containing 10 ml potato dextrose agar. After the mycelial colony had developed, sterile blank filter paper disks (0.625 cm in diameter) at a distance were placed 1 cm away from the rim of the mycelial colony. The samples

were dissolved in 20mM Tris–HCl buffer pH 7.2 containing 0.15 M NaCl. The plates were incubated at 27°C until mycelial growth had enveloped peripheral disks containing the control and had formed crescents of inhibition around the paper disks containing samples with purified lectin. Petri dish was incubated at 25 °C for 3 day-period, at the end of which the diameter of the clear zone of inhibition surrounding the sample was taken as a measure of the inhibitory power of the sample against the particular test organism.

3.9.3 Assay of antibacterial activity by Minimum inhibition concentration

3.9.3.1 Preparation of bacteria

B.subtilis, *S.aureus* and *E.Coli* from stock were streaked on NA and incubated at 37°C for 24 hr. Then, their were picked up 5-6 fresh colonies, inoculated into 50 ml of fresh NB and shaking flask at 250 rpm, 37°C for 6hr.

C.albican was grown as above on YM at 30°C for 24 hours and in 50 ml YMB which shaking flash at 250 rpm, 30°C for 6 hours.

3.9.3.2 Assay of antibacterial activities by MIC

The inoculated of bacteria were prepared from 6 hours broth cultures and suspensions were adjusted to McFarland standard turbidity number 0.5. The purified lectin (50 µl) was diluted in serial 2-fold dilutions in 96-well microtiter plate with 50 µl of broth. The initial concentration was the highest lectin in tested solution in first well. Then, add 50 µl of bacteria in each well. The final volume in each well was 150 µl. The broth media were used as negative controls. Amplicillin and Penicillin (1mg/ml) were used as positive controls to determine the sensitivity of tested solutions. The plate was covered with a sterile plate sealer and incubates for 24 hours at 37°C and 30°C for *C.albican*. Next, 600 nm absorbance were indicated growth of organisms.

CHAPTER IV

RESULTS AND DISCUSSION

4.1 Purification of lectin from *C. longa* rhizomes

The present study reports the purification and characterization of a lectin from the rhizomes of *C. longa*. Following homogenization and overnight extraction of *C. longa* rhizomes in TBS, and clarification by cheese cloth filtration and centrifugation to give a crude rhizome homogenate, 80% saturation ammonium sulphate fractionation reduced the total protein yield some 3.5-fold (28.6% yield) but slightly increased the total lectin activity (1.07-fold) resulting in a 3.7-fold increase in the total specific activity (Table 4.1). The paradoxical increase in total lectin activity (as hemagglutination activity) to above that of the starting level, may simply reflect removal of inhibitors or competing agents, in addition to simple experimental variations, but nevertheless was only a slight increment.

Further purification of the crude ammonium sulphate cut extract to enrich for lectins by ConA Sepharose column based affinity chromatography further reduced the total protein level some 63.8-fold, for a decrease in the total hemagglutination activity of only 2.6 fold, giving a 24.7-fold increase in the specific activity for this stage (Table 4.1). Since the unbound protein fractions in TBS were devoid of hemagglutination activity, likely indicating that the lectin was fully adsorbed to the matrix, this apparent 2.6-fold decrease in lectin hemagglutination activity may reflect the incomplete elution of lectin from the ConA Sepharose matrix in the column by the methyl α -D-glucopyranoside competitor, but the possibility of co-purification of methyl α -D-glucopyranoside with the lectin, removal of required metal cation cofactors or other denaturing actions cannot be excluded, since lectin levels were monitored by hemagglutination activity.

Regardless, the recovered ConA Sepharose bound lectin was eluted as a single peak after desorption with TBS supplemented with 0.5 M methyl α -D-glucopyranoside (Figure 4.1), and this was used in subsequent further studies as the enriched lectin preparation, and was shown to be purified *C. longa* lectin (see below). The protein from each step of purification was analyzed for purity and protein pattern

by native-PAGE (Figure 4.2), where after ConA Sepharose affinity chromatography a single protein band on the native-PAGE gel was observed, indicating that the purified lectin obtained from the ConA sepharose column should be a relatively pure lectin protein. The amount of *C. longa* lectin, the activity and specific activity were shown in Table 1. Therefore, assuming both purification to homogeneity and a constant relationship between hemagglutination activity and total lectin mass, the total yield of *C. longa* lectin was 0.12 mg/g (wet weight) rhizomes which accounted for about 0.45% (w/w) of the total protein in the crude rhizome extract. The purified lectin was found to contain 5.2% (w/w) carbohydrate content, which is about the same as the lectin from *Helianthus tuberosus* L. tubers, which were reported to have a 5.3% (w/w) equivalent of carbohydrate (Suseelan *et al.*, 2002).



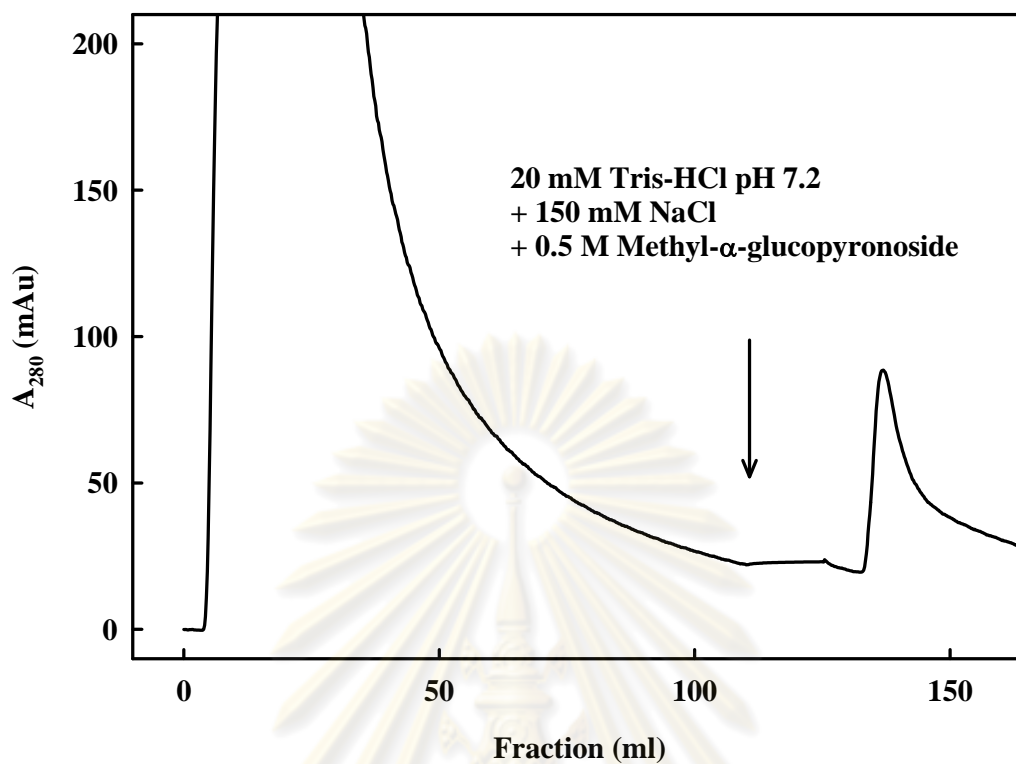


Figure 4.1 Affinity chromatogram of *C. longa* rhizome lectin on a ConA Sepharose column equilibrated and then washed with TBS. Lectin was then eluted with TBS containing 0.5 M Methyl α -D-glucopyranoside, as described in the methods section (start of elution indicated by the arrow).

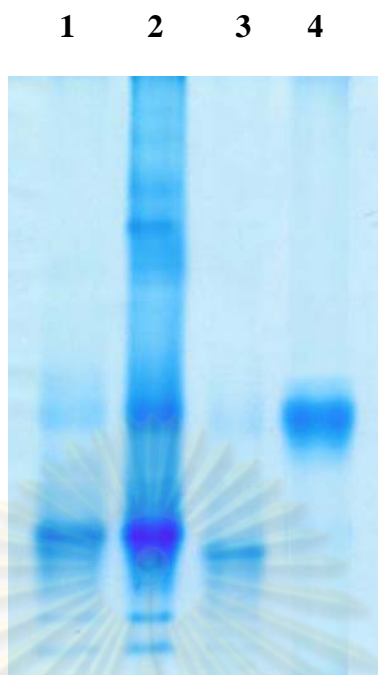


Figure 4.2 Coomassie blue stained non-denaturing PAGE of the *C. longa* rhizome lectin from each step of purification where lanes 1 - 4 show 20 μ g of total protein from (1) the crude extract (homogenate), (2) the 80% ammonium sulphate precipitated and kept fraction (3) the non bound ConA sepharose fraction discarded and (4) the bound fraction kept.

Modern isolation procedures generally employ affinity chromatography on an insoluble carbohydrate derivative (Lis and Sharon 1980; Goldstein and Hayes 1978). Such insoluble, naturally occurring, or chemically modified substances, such as insoluble hog gestic musin (Etzier and Kabat 1970), chitin (Shankar *et al.*, 1976), arabinogalactan (Majumdar and Surolia 1978), sephadex (Wang *et al.*, 1974) and agarose or sepharose, have also been employed as affinity matrices for purification of interesting lectins. For example, the mannose-glucose specific lectins from the seeds of the tepary bean (*Phaseolus acutifolius*) and mulberry, *Morus* sp. (Rosales: Moraceae), seeds were purified by a ConA Sepharose based affinity chromatography column (Richard *et al.*, 1990; Absar *et al.*, 2005). Another example is the lectin from ground elder (*Aegopodium podagraria*) rhizomes which could not be purified by Gal-NAG-Sepharose, but was purified using affinity chromatography of erythrocyte membrane proteins immobilized on cross-linked agarose (Peuman *et al.*, 1985).

Table 4.1 Purification of the lectin from the rhizomes of *C. longa*.

| Purification step | Total protein (mg)^a | Total activity (HU)^b | Specific activity (HU/mg)^c | Yield (%) | Purification (fold)^d |
|--|---|--|--|----------------------|--|
| Crude extract | 10,931 | 7.68 x 10 ⁶ | 702.6 | 100 | 1 |
| 80% (NH ₄) ₂ SO ₄ precipitation | 3132 | 8.19 x 10 ⁶ | 2,616 | 106.7 | 3.7 |
| Con A Sepharose (bound fraction) | 49.1 | 3.17 x 10 ⁶ | 64,566 | 41.2 | 91.9 |

^a Crude protein extract from 400 g wet weight of rhizomes

^b Minimal concentration of protein able to cause visible agglutination of a 2-4% (v/v) suspension of rabbit erythrocytes.

^c Specific activity is defined as the hemagglutination unit (HU) divided by the protein concentration (mg/ml) of the assay solution. Rabbit erythrocytes were used for the assay.

^d Purification index was calculated as the ratio between the minimal concentration of the crude extract able to cause visible agglutination of the rabbit erythrocytes and that of the protein fraction obtained at each purification step.

4.2 Molecular weight determination

The potential purity of the *C. longa* rhizomal lectin extract was evaluated at each step of the purification using SDS-PAGE under reducing conditions (Figure 4.3). The ammonium sulfate precipitated lectin showed many protein bands of a low molecular weight, with only a slight band at ~17 - 18 kDa. After the ConA-sepharose affinity purification step, a significant increase in the intensity of the 17.3 kDa band (estimated size) was seen, and only this band, suggesting a high degree of likely purity. The estimated mass (or subunit mass) for this lectin of ~17.3 kDa is in agreement with the previously published biochemical characteristics for other plant lectins, which reside within the 17 to 20 kDa range (Trifonova *et al.*, 2004; Gaidamashvili *et al.*, 2004)

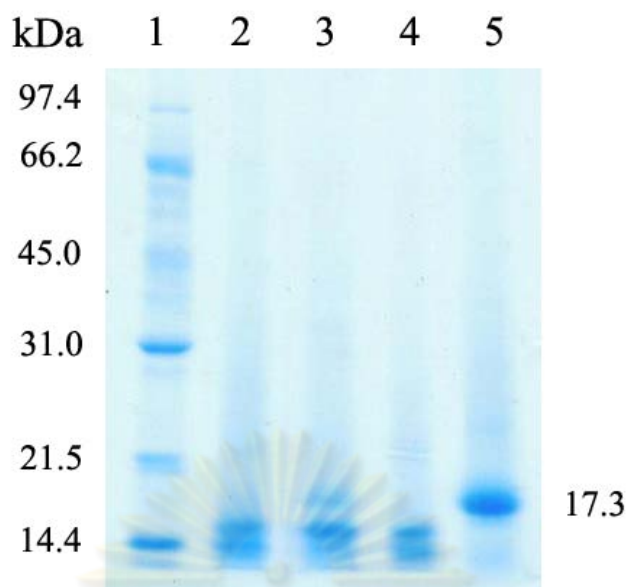


Figure 4.3 Reducing SDS-PAGE analysis of the *C. longa* rhizome lectin purification where lanes 2 - 5 show 20 μ g of total protein. Lane 1, molecular weight standards; Lane 2, the crude extract (homogenate); Lane 3, 80% saturation ammonium sulphate precipitated (kept) fraction; Lane 4, the non-bound ConA-sepharose fraction; Lane 5, the eluted ConA-sepharose-bound fraction (enriched lectin preparation).

4.3 Assay for hemagglutinating activity

Examination of the hemagglutination ability of the purified *C. longa* rhizomal lectin preparation with erythrocytes from different species (human, rabbit, mouse, rat, guinea pig, geese and sheep) revealed some interesting observations (Table 4.2). With respect to binding to human erythrocytes, the purified *C. longa* rhizomal lectin showed a moderately strong hemagglutination ability when tested against human blood group B, but, in contrast, no activity against the other three blood groups (A, AB and O), and thus shows a marked human blood group specificity. Moreover, the minimum concentration required to cause agglutination (MCA) of human blood group B cells (0.333 mg/ml) was much lower than that for the *Clitoria ternatea* lectin at 1.132 mg/ml (Naeem *et al.*, 2007). The lectin from the rhizomes of *Urtica dioica* also shows no apparent human blood group-specific discrimination (Peumans *et al.*, 1983), whilst that from *Galactia lindenii* seeds displayed a lower specific titer for human blood group A than that for groups B and O (Almanza *et al.*, 2004). This difference in

the agglutination activity between groups may be due to the nature of the different glycoprotein(s) protruding on the erythrocyte cell surfaces, which are weakly or not totally recognized by the lectin (Oliveria *et al.*, 2002).

However, outside of human erythrocytes, the purified *C. longa* rhizome lectin was a more potent agglutinin for, in order, native rat, rabbit, sheep and guinea pig erythrocytes (MCA = 0.01 - 0.08 mg/ml), with a weaker but significant avidity (hemagglutination activity) seen against geese and mouse erythrocytes (Table 4.2). These results, with the agglutination of native mouse, rat, guinea pig, and sheep RBCs, seem to be a novel character for the *C. longa* rhizome lectin as no other report concerning any lectin from other *Curcuma* species is currently available. In contrast, no agglutination was reported against mouse, cow, horse, dog and sheep erythrocytes for the lectin from *Galactia lindenii* seeds (Almanza *et al.*, 2004), whilst variable hemagglutination, with a relatively higher potency against rabbit erythrocytes, was observed for that the lectin from *Pisum sativum* (Sitohy *et al.*, 2007).

Table 4.2 Hemagglutinating activity of the purified *C. longa* rhizome lectin against human and other animal erythrocytes

| Blood type | MCA (mg/ml) |
|------------|-------------|
| Human A | NA |
| Human B | 0.333 |
| Human AB | NA |
| Human O | NA |
| Rabbit | 0.020 |
| Mouse | 0.665 |
| Rat | 0.010 |
| Guinea pig | 0.083 |
| Geese | 0.166 |
| Sheep | 0.042 |

The concentration of *C. amarissima* lectin used in this assays was 0.05 mg/ml and was serially 1:1 (v/v) diluted. Data shown are the mean \pm 1 S.D. and are derived from 3 repeats.

MCA = Minimum concentration required for a visible agglutination.

NA = none agglutination

4.4 Effect of temperature on the lectin hemagglutination activity and stability

The results of thermal denaturation of the *C. longa* rhizome derived lectin showed that the lectin remains stable when exposed to temperatures below 50 °C for 60 min as determined by the absence of loss of its hemagglutinating activity. Above 50 °C the hemagglutinating activity was gradually lost over time while at 60 °C the hemagglutination activity was reduced to 12.5% and was totally inactivated at 70 °C for more than 30 min (Figure 4.4, 4.5). This is in accord with that reported for the lectin from *Parkia Ja Vanica*, which completely lost hemagglutination activity at 70 °C (Utarabhan and Akkayanont 1995). Correspondingly, the hemagglutinating activity of the *Psophocarpus palustris* lectin rapidly declined when the lectin was heated above 50 °C, was reduced to half at 60 °C and was completely lost at 70 °C (Adenike *et al.*, 2005). In contrast, the lectin from the rhizomes of *Smilax glabra* was stable at temperatures up to 50 °C, although above 80 °C very little hemagglutination activity remained suggesting that the hemagglutination activity depends on the native conformation of the protein (Ng and Yu 2001). Indeed, the activity of the lectin is related to cations, just like the metal ions in Concanavalin A, which protect it from proteolytic and temperature degradation (Doyle and Keller 1986). In this work, the thermal stability of the purified *C. longa* rhizomal lectin was found to be stable between 25 and 50 °C.

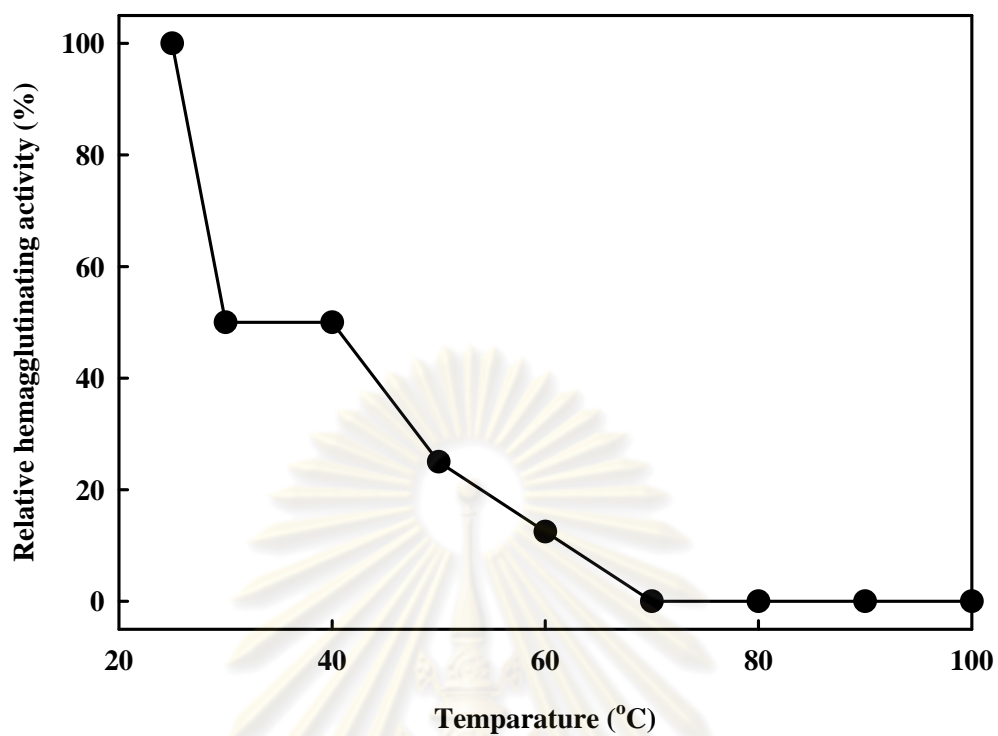


Figure 4.4 Effect of temperature on the agglutinating activity of the purified *C. longa* rhizome lectin towards a rabbit erythrocyte suspension in TBS. The data are shown as the mean \pm 1 S.D. and are derived from three repeats. Full activity (100%) corresponds to a titer of 2^5 .

ศูนย์วิทยทรัพยากร
จุฬาลงกรณ์มหาวิทยาลัย

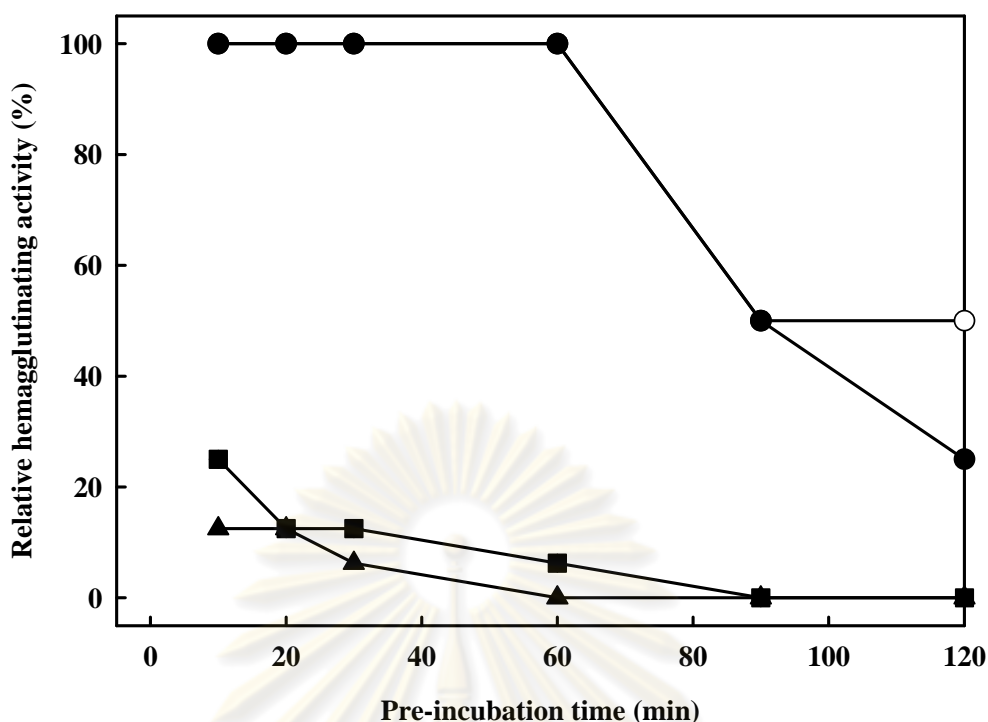


Figure 4.5 Thermostability of the same purified lectin towards a rabbit erythrocyte suspension in TBS at: (○) 40 °C, (●) 50 °C, (■) 60 °C and (▲) 70 °C. The data are shown as the mean \pm 1 S.D. and are derived from three repeats. Full activity (100%) corresponds to a titer of 2^5 .

4.5 Effect of pH on the lectin hemagglutination activity

When the purified *C. longa* rhizome lectin activity was tested at different pH values, it was found to be acid tolerant, with the same hemagglutination activity as the control (100%) at all pH values between 2 and 6 (Figure 4.6). In contrast, the lectin rapidly lost its activity at all pH values of 8.0 or higher, decreasing to 25% and 12.5% of the control hemagglutinating activity at pH 8 - 10 and pH 10 - 12, respectively. Interestingly, the hemagglutination activity of the lectin in potassium phosphate buffer at pH 6.0 - 7.0 was almost twofold higher than the control (Figure 4.6). The loss of lectin agglutination activity at alkali pH values seen here with the *C. longa* rhizome lectin has been reported before for other plant lectins, such as the 50% loss of activity at pH 8.5 with the lectin from *Helianthus tuberosus* L. tubers (Suseelan *et al* 2002).

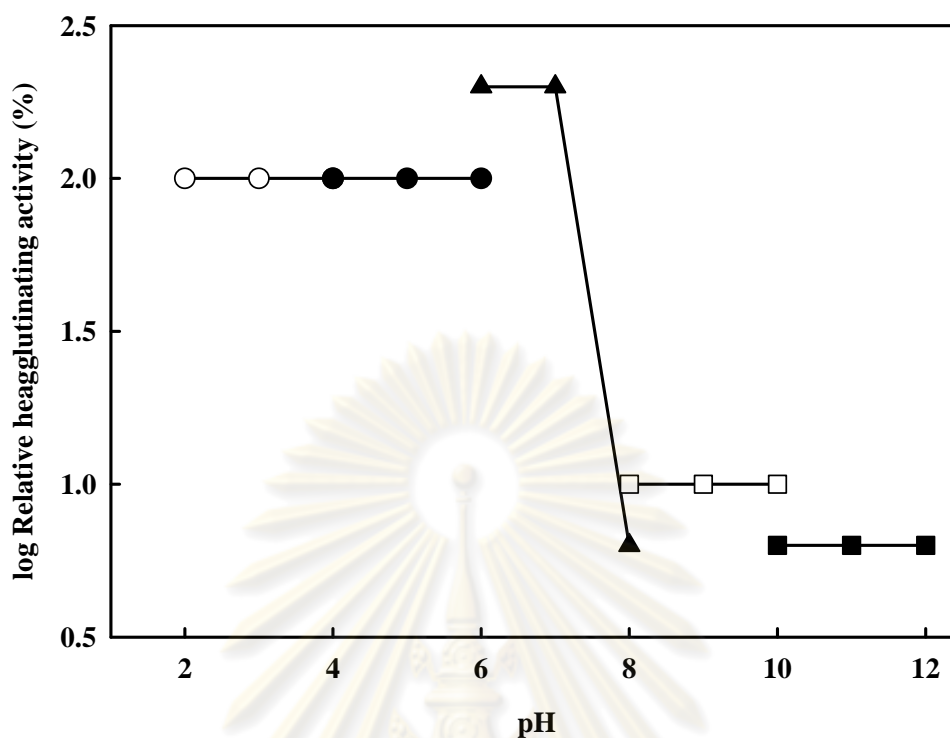


Figure 4.6 The effect of pH on the hemagglutinating activity of *C. longa* rhizome lectin towards rabbit erythrocytes. The data are shown as the mean \pm 1 S.D and are derived from three repeats. Full activity (100%) corresponded to a titer of 2^5 . The following buffer systems were used: (○) 20 mM glycine-HCl (pH 2.0 - 4.0), (●) 20 mM sodium acetate (pH 4.0 - 6.0), (▲) 20 mM Potassium phosphate (pH 6.0 - 8.0), (□) 20 mM Tris-HCl (pH 8.0 - 10.0) and (■) 20 mM glycine-NaOH (pH 10.0 - 12.0). The data are shown as the mean \pm 1 S.D. and are derived from three repeats. Full activity (100%) corresponds to a titer of 2^5 .

4.6 Effect of metal ions on the hemagglutination level

Incubating the purified lectin (about 1 mg/ml) with 0, 12.5, 25, 50 and 100 mM of Ca^{2+} , Mn^{2+} , Mg^{2+} , Fe^{3+} , Hg^{2+} , Co^{2+} and EDTA for 24 hours prior to assaying for hemagglutination activity, revealed a *C. longa* rhizome lectin requirement for Ca^{2+} and Mn^{2+} , with both metal cations being required at less than 50 mM to be effective, suggesting they are essential for the stability of the lectin structure and activity (Table 4.3). In contrast, Mg^{2+} , Fe^{3+} , Hg^{2+} , Co^{2+} and EDTA did not support hemagglutinating

activity. This result agrees with the report that the hemagglutination activity of the galactose / N-acetylgalactosamine-specific lectin from *Sophorus juponicus* was completely inhibited by the addition of 0.23 mM EDTA (Iglesias et al., 1982). In contrast, the lectin from the rhizomes of *Smilax glabra* was not affected by the monovalent cations (Na^+ , K^+ and NH_4^+), the divalent cations (Ca^{2+} , Mg^{2+} , Mn^{2+} and Cu^{2+}) and the trivalent cation Fe^{3+} (Ng and Yu 2001), whilst the presence of 0.05 M EDTA did not effect the agglutinating activity of the lectin from *Erythrina cristagalli*.

4.7 Internal amino acid sequence of lectin by LC/MS/MS

The sequence analysis of a partial internal fragment of the purified lectin from *C. longa* rhizomes, obtained by in gel digestion with trypsin and subsequent sequence analysis with LC/MS/MS, was performed. The products of the spectra were obtained and peptide sequences were then determined according to a *de novo* sequencing algorithm to derive a short list of possible sequence candidates. These served as query sequences in a subsequent homology base search against the in-house swiss-prot non-redundant protein database using MS BLAST (Shevchenko *et al.*, 2001) to find likely candidates. As a result, the query sequence, SVLPE WWSVG FSATT GINK (m/z of 1993.25) (Figure 4.7), which was similar to those previously isolated for a phytohemagglutinin precursor from *Phaseolus vulgaris* (Q8RVX9) and *P. coccinuous* (Q8RVY4) at amino acid residues 218 to 236, suggests that this protein could be a member of this lectin family as well (Figure 4.8).

ศูนย์วิทยทรัพยากร
จุฬาลงกรณ์มหาวิทยาลัย

| | | 5 | 10 | 15 | | Accession Number |
|---|-----|-----------|---------|-----------|-----------|------------------|
| <i>Curcuma longa</i> lectin | | S V L P E | W V S V | G F S A T | T G I N K | |
| Phytohemagglutinin precursor (<i>Phaseolus vulgaris</i>) | 218 | S V L P E | W V S V | G F S A T | T G I N K | 236 Q8RVX9 |
| Phytohemagglutinin precursor (<i>Phaseolus coccineus</i>) | 218 | S V L P E | W V S V | G F S A T | T G I N K | 236 Q8RVY4 |
| Phytohemagglutinin precursor (<i>Phaseolus costaricensis</i>) | 218 | S V L P E | W V S V | G F S A T | T G I E K | 236 Q5ZF33 |
| Lectin (<i>Robinia pseudoacacia</i>) | 231 | D V L P E | W V R F | G F S A T | T G I D K | 249 Q41159 |
| Lectin (<i>Glycine max</i>) | 226 | S N L P E | W V S V | G F S A T | T G L H E | 245 B4XQ48 |
| Lectin (<i>Glycyrrhiza glabra</i>) | 95 | D V L P E | F V R I | G F S A T | T G I S E | 113 Q9ZRN4 |
| Lectin (<i>Sophora japonica</i>) | 245 | T V L P E | W V R V | G F S A S | T G E N V | 263 P93537 |
| Lectin (<i>Medicago truncatula</i>) | 221 | K V L P E | W V R V | G F S A A | T G R D F | 239 Q43563 |

Figure 4.7 Amino acid sequence from the tryptic fragments of the purified *C. longa* lectin. Comparisons are made with other lectins from the lectin family that showed the highest sequence homology in BLAST searches of the NCBI and SwissProt databases. Shaded regions represent regions of identity.

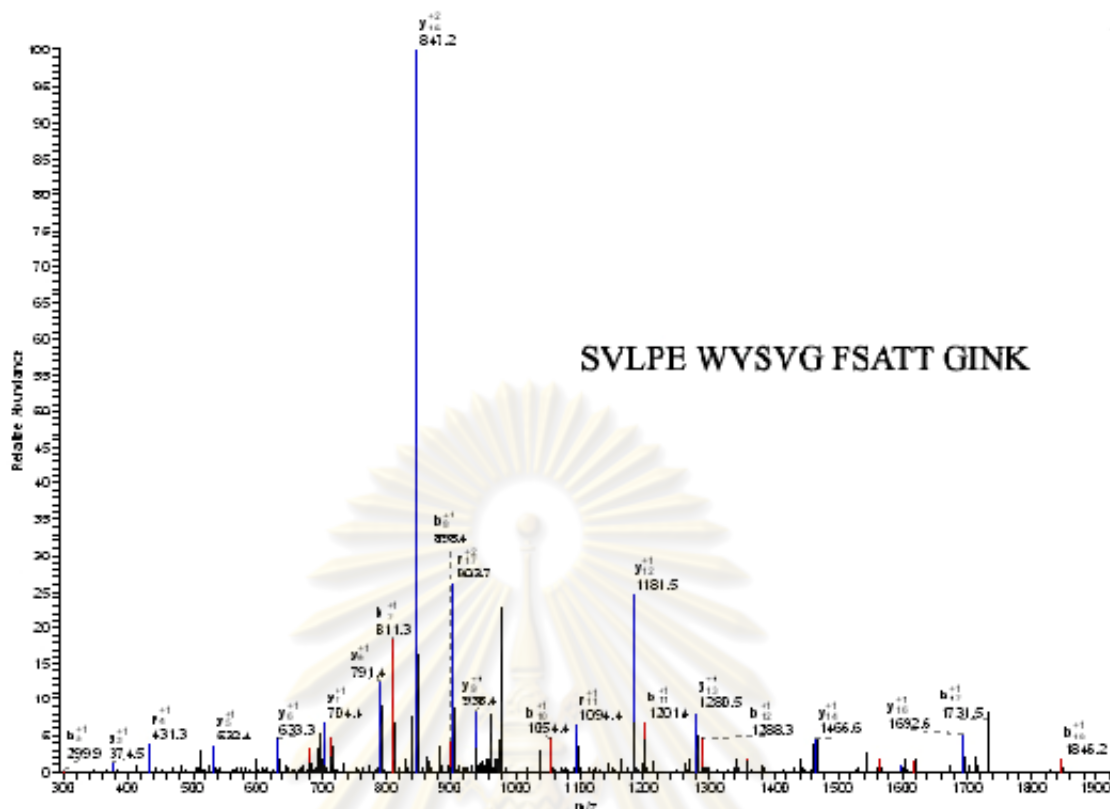


Figure 4.8 LC/MS/MS spectra of the tryptic digest of the purified lectin used to derive the data in (Figure 4.7) above.

4.8 Assay of antifungal activity

The purified *C. longa* lectin at a dose of 47 μg and 94 $\mu\text{g}/0.3\text{ cm}^2$ disc showed antifungal activity against the three tested phytopathogenic fungal species, *Exserohilum turcicum*, *Fusarium oxysporum* and *Colectrotrichum cassiicola*. While the lectin dose of 47 $\mu\text{g}/0.3\text{ cm}^2$ disc slightly inhibited the growth of these three fungi, that at 94 $\mu\text{g}/0.3\text{ cm}^2$ disc showed a higher and significant degree of antifungal activity on all three isolates (Figure 4.9). This effective lectin dose of around 100 $\mu\text{g}/0.3\text{ cm}^2$ disc is in accord with that reported for the lectin from *Annona muricata* seeds against the growth of *F. oxysporum*, *F. solani* and *Colletotrichum musae* (Damico *et al.*, 2003), and for the lectin from *Astragalus mongholicus* against *F. oxysporum*, *Colletotrichum* sp. and *D. turcia* (Yan *et al.*, 2005). Other lectins, such as those from potato (Gozaia *et al.*, 1995) and red kidney beans (Ye *et al.*, 2001), have also been reported to exhibit antifungal activity. However, novel non-lectin proteins

with antifungal activity in plant rhizomes are also known, such as the 32 kDa protein in ginger rhizomes which exhibits antifungal activity toward *F. oxysporum* at a dose of 32 - 160 $\mu\text{g}/0.3\text{ cm}^2$ disc of ginger rhizome (Wang and Ng 2005).

4.9 Assay of bacterial activity

The antimicrobial activity of *C. longa* lectin, expressed as the minimal inhibitory concentration (MIC), was found to inhibit the growth of all five microbial species tested, the four bacteria, *B. subtilis*, *S. aureus*, *E. coli* and *P. aeruginosa*, plus the yeast *C. albicans*, at MIC values of ≥ 0.011 , 0.005, 0.092, 0.002 and 0.0046 mg/ml, respectively. These results demonstrate that the *C. longa* rhizome lectin is likely to be at least one of the, if not the, candidate molecule responsible for the antibacterial action observed in rhizome extracts from this plant. An outstanding feature of the antibacterial activity of the isolated lectin is it is somewhat nonselective against this fairly diverse selection of bacteria. The potentially broad effect of the *C. longa* rhizome lectin on the growth inhibition of several diverse bacterial strains, confirms the important interaction between the lectin and all the strains under consideration. From the tested strains, *P. aeruginosa* (lowest MIC) seemed to be most sensitive to the presence of lectin. Previous studies of the binding of plant lectins to bacterial cell wall peptidoglycans indicate that several lectins of different carbohydrate specificities can recognize most of the components of the bacterial cell wall, such as muramic acid, *N*-acetylglucosamine, *N*-acetylmuramic acid and muramyl dipeptide (Ayoub *et al.*, 2006).

ศูนย์วิทยทรัพยากร
จุฬาลงกรณ์มหาวิทยาลัย

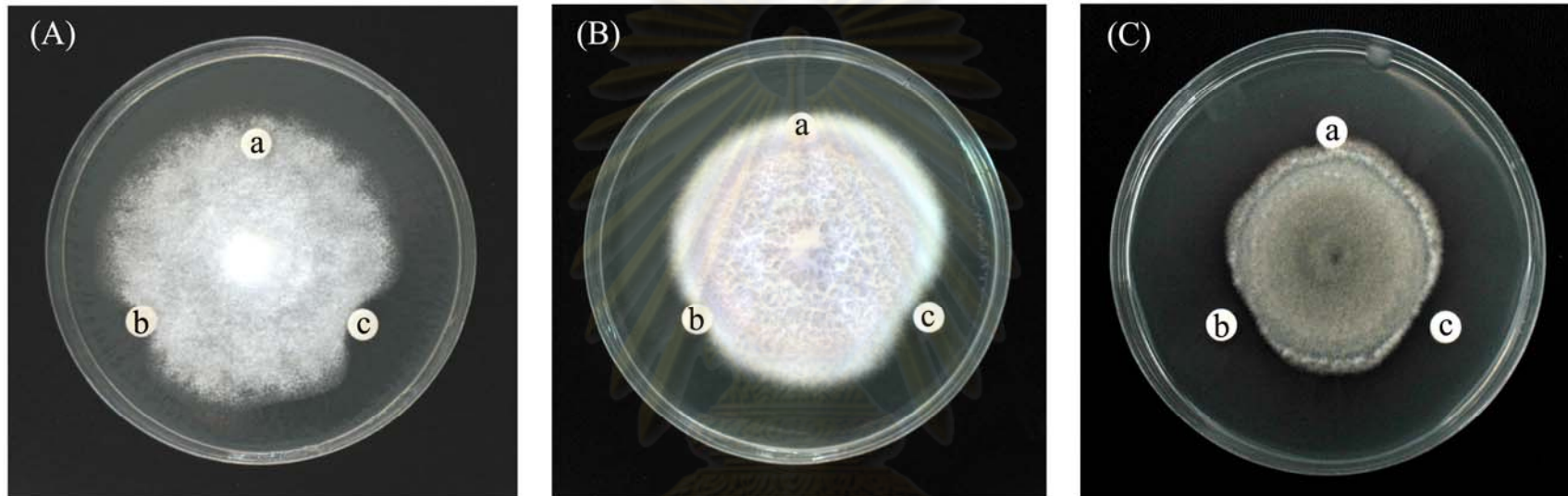


Figure 4.9 The antifungal (colony growth inhibition) effect of the *C. longa* rhizome lectin towards (A) *E. turicicum*, (B) *F. oxysporum* and (C) *C. cassicola*, showing the (a) negative control (10 μ l of 20 mM Tris-HCl buffer pH 7.2), (b) 47 μ g/ 0.3 cm² disc and (c) 94 μ g/ 0.3 cm² disc of *C. longa* rhizome lectin.

ศูนย์วิทยทรัพยากร
จุฬาลงกรณ์มหาวิทยาลัย

4.10 Alpha-glucosidase inhibition activity

Alpha-glucosidase inhibitors have been used for preventing the digestion of carbohydrates, with the aim of developing them as drugs for the dietary control of diabetes mellitus type 2 (Holman 1998). Carbohydrates are digested to monosaccharides which can be absorbed through the intestine. Hence, α -glucosidase inhibitors reduce the impact of carbohydrates on blood sugar. However, there are only a few proteins in different plant sources that are reported to have an α -glucosidase inhibitory activity. Recently, two proteins, Dolichin, isolated from field beans (*Dolichos lablab*) (Ye *et al.*, 2000) and Unguilin, isolated from seeds of the black-eyed pea (*Vigna unguiculata*) (Ye and Ng 2001), were reported to be able to inhibit human immunodeficiency virus (HIV) reverse transcriptase, as well as α - and β -glucosidases which are glycohydrolases implicated in HIV infection. In present study, the half maximal inhibition concentration (IC_{50}) of the purified *C. longa* rhizome lectin was found to be about 8 μ g/ml of protein. Therefore, this *C. longa* lectin may be suitable for the same applications as other currently used α -glycosidase inhibitors and may be a new candidate for disease control.



ศูนย์วิทยทรัพยากร
จุฬาลงกรณ์มหาวิทยาลัย

CHAPTER V

CONCLUSION

The purification of lectin from *C. longa* rhizome required single steps that is affinity chromatography by Con A sepharose column. The lectin was obtained with 91.9 fold purification and 41.2% yields evaluate as 0.12 mg protein/g rhizomes. The specific activity was 645.66×10^2 HU/mg proteins. The lectin was found to contain 5.2 % carbohydrate content. The lectin had an apparent molecular weight of 17.3 kDa as analyze by SDS-PAGE. The lectin specific B human blood group and it was specific agglutinin 0.010 and 0.020 mg/ml for rat and rabbit erythrocytes respectively. Effect of temperature on lectin activity it was stable below 50°C for 60 min and complete loss activity at 70°C more than 30 min while the pH optimum at 6-7. The activity of lectin was requirement for metal ion Ca^{2+} and Mn^{2+} at least 50 mM. The internal amino acid sequence of *C. longa* lectin has similarity the sequence of phytohemagglutinin precursor of *Phaseolus vulgaris*, *Phaseolus coccinuous*, *Phaseolus costaricensis* and other plants lectin in Fabaceae family. For other biological activity namely α -glucosidase inhibition activity, assay of phytopathogenic antifungal activity, assay of bacteria activities by MIC that are result as follow activity of α -glucosidase inhibitor from *C. longa* exhibited very high activities which IC_{50} was 0.0166 mg/ml. The purified lectin at concentration of 47 and 94 $\mu\text{g}/\text{disc}$ showed antifungal activity of the *Exserohilum turcicum*, *Fusarium oxysporum*, and *Colectrotrichum cassiicola*. And finally Minimal inhibitory concentration (MIC) of bacterial assay were determined for purified lectin. The lowest to highest MIC value 0.002, 0.005, 0.011, 0.046 and 0.09 mg/ml was obtained for *P. aeruginosa*, *S. aureus*, *B. subtilis*, *C. albican* and *E. Coli* respectively.

REFERENCES

- Abdullaev, F.I. and Mejia, E.G. 1997. Anti-tumor effect of plant lectins. Natural Toxins 5 : 157-163.
- Absar, N., Yeasmin, T., Raza, M.S., Sarkar, S.K. and Arisaka, F. 2005. Single Step Purification, Characterization and N-Terminal Sequences of a Mannose Specific Lectin from Mulberry Seeds. The protein journal 24(6) : 369-377.
- Adar, R., Streicher, H., Rozenblatt, S. and Sharon, N. 1997. Synthesis of soybean agglutinin in bacterial and mammalian cells. European Journal of Biochemistry 249 : 684-689.
- Adenike, K., Kayode, F.A. and Akintola, A. 2005. Purification and Characterization of a Lectin from the seeds of *Psophocarpus palustris*. Pakistan Journal of Biological Sciences 8 (12) : 1667-1671.
- Aggarwal, B.B., Kumar, A. and Bharti, A.C. 2003. Anticancer potential of curcumin: preclinical and clinical studies. Anticancer Research 23 (1A) : 363-398.
- Ajouba, A., Causse, H., Van Damme, E.J.M., Peumans, W.J., Cambillau, C. and Rouge, P. 1994. Interactions of plant lectins with the components of the bacterial cell wall peptidoglycan. Biochemical Systematics and Ecology 22 : 153-159.
- Allen, A.K., Neuberger, A. and Sharon, N. 1973. The purification, composition and specificity of wheat-germ agglutinin. Journal of Biochemistry 131 : 155-162.
- Allen, N.K and Brilliantine, L. 1969. A survey of hemagglutinins in various seeds. Journal of Immunology 102 : 1295-1299.
- Almanza, M., Vega, N. and Perez, G. 2004. Isolating and characterising a lectin from *Galactia lindenii* seeds that recognises blood group H determinants. Archives of Biochemistry and Biophysics. 429 : 180-190.

- Alpuche, J., Pereyra, A., Agundis, C., Rosas, C., Pascual, C., Slomianny, M.C., Vazquez, L. and Zenteno, E. 2005. Purification and characterization of a lectin from the white shrimp *Litopenaeus setiferus* (Crustacea decapoda) hemolymph. Biochimica et Biophysica Acta-General Subjects 1724 (1-2) : 86-93.
- Altschul, S.F., Gish, W., Miller, W., Mayers, E. and Lipman, D.J. 1990. Basic local alignment search tool. Journal of Molecular Biology 215 : 403-410.
- Ammon, H.P.T., Anazoda, M.I., Safayhi, H., Dhawan, B.N. and Srimal, R.C. 1992. Curcumin: A potent inhibitor of Leukotriene B4 formation in rat peritoneal polymorphonuclear neutrophils (PMNL). Planta Medica 58 : 26-28.
- Ammon, H.P.T. and Wahl, M.A. 1991. Pharmacology of *Curcuma longa*. Planta Medica 57 (1) : 1-7.
- Arango, R., Rodriguez-Arango, E., Adar, R., Belenky, D., Loontjens, F.G., Rozenblatt, S. and Sharon, N. 1993. Modification by site directed mutagenesis of the specificity of *Erythrina corallodendron* lectin for galactose derivatives with bulky substituents at C-2. FEBS Letters 330 : 133-136.
- Ayouba, A., Martin, D. and Rougé, P., 1992. Recognition of muramic acid and N-acetylmuramic acid by Leguminosae lectins: possible role in plant-bacteria interactions. FEMS Microbiology Letters 92 (1) : 41-46.
- Bains, J.S., Vikram, D., Jatinder, S., Kamboj, S.S., Nijjar, K.K. and Javed, N. A. 2005. Novel lectins from rhizomes of two Acorus species with mitogenic activity and inhibitory potential towards murine cancer cell lines." International Immunopharmacology 5 (9) : 1470-1478.
- Balzarini, J., Neyts, J., Schols, D., Hosoya, M., Van Demme, E., Peumans, W.K. and Clerco, E. 1992. The mannose-specific plant lectins from *Cymbidium* hybrid and *Epipactis helleborine* and the (N-acetylglucosamine) n-specific plant lectin from *Urtica dioica* are potent and selective inhibitors of human immunodeficiency virus and cytomegalovirus replication in vitro. Antiviral Research 18 : 191-207.

- Balzarini, J., Scohols, D., Neyts, J., Van Damme, E., Peumans, W.J. and De Clercq, E. 1991. α -(1-3)- and α -(1-6)-*D*-mannose-specific plant lectins are markedly inhibitory to human immunodeficiency virus and cytomegalovirus infections in vitro. Antimicrobial Agents and Chemotherapy 35 : 410-416.
- Barkai-Golan, R. and Sharon, N. 1978. Lectins as a tool for the study of yeast cell walls. Experimental Mycology 2 : 110-113.
- Barondes, S.H., Castronovo, V. and Cooper, D.N.W. 1994. Galectins – a family of beta-galactoside-binding lectins. The Journal of Cell Biology 76 : 597-598.
- Barrientos, L.G. and Gronenborn, A.M. 2005. The highly specific carbohydrate-binding protein cyanovirin-N: structure, anti-HIV/Ebola activity and possibilities for therapy. Mini Reviews in Medicinal Chemistry 5 : 21-31.
- Bollag, D.M, Rozycki, M.D and Edelstein, S.J. 1996. Protein Method. 2nd. New York : Wiley-Interscience,
- Boonmee, A., Reynolds, C.D. and Sangvanich, P. 2007. α -Glucosidase Inhibitor Proteins from *Sesbania grandiflora* Flowers. Planta Medica. 73 (11) : 1197-1201.
- Bradford, M.M. 1976. A rapid and sensitive method for the quantitation of microgram quantities of protein utilizing the principle of protein-dye binding. Analytical biochemistry 72 : 248-254.
- Casirola, D.M. and Ronaldo P.F. 2006. Alpha-Glucosidase inhibitors prevent diet-induced increases in intestinal sugar transport in diabetic mice. Metabolism 55 (6) : 832-841.
- Cassone, A., Mattia, E. and Boldrini, L. 1978. Agglutination of Blastospores of *Candida albicans* by Concanavalin A and its Relationship with the Distribution of Mannan Polymers and the Ultrastructure of the Cell Wall. Journal of General Microbiology 105 (2) : 263-273.

- Charles, V. and Charles, S.X. 1992. The use and efficacy of *Azadirachta indica* ADR (Neem) and *Curcuma longa* (Turmeric) in scabies. A pilot study. Tropical and Geographical Medicine 44 : 178-181.
- Chen, J., Liu, B., Ji, N., Zhou, J., Bian, H.J., Li, C.Y., Chen, F. and Bao, J.K. 2009. A novel sialic acid-specific lectin from *Phaseolus coccineus* seeds with potent antineoplastic and antifungal activities. Phytomedicine 16 (4) : 352-360.
- Cheung, A.H.K., Wong, J.H. and Ng, T.B. 2009. *Musa acuminata* (Del Monte banana) lectin is a fructose-binding lectin with cytokine-inducing activity. Phytomedicine 16 (6-7) : 594-600.
- Cunningham, B.A., Hemperly, J.J., Hopp, T.P. and Edelman, G.M. 1979. Favin versus concanavalin A: circularly permuted amino acid sequences. Proceedings of the National Academy of Sciences 76 : 3218-3222.
- Damico, D.C., Freire, M.G., Gomes, V.M., Toyama, M.H., Marangoni, S., Novello, J.C. and Macedo, M.L. 2003. Isolation and characterization of a lectin from *Annona muricata* seeds." Journal of protein chemistry 22 (7-8) : 655-61.
- De Santana, M.A., Santos, A.M.C., Oliveira, M.E., De Oliveira, J.S., Baba, E.H., Santoro, M.M. and De Andrade, M.H.G. 2008. A novel and efficient and low-cost methodology for purification of *Macrotyloma axillare* (Leguminosae) seed lectin. International Journal of Biological Macromolecules 43 (4) : 352-358.
- Devi, S.K., Devi, L.I. and Singh, L.R. 2009. Purification and Characterization of a New Dimeric Mannose/Glucose-Binding Isolectin from *Vicia tetrasperma* (L.) Schreber. Preparative Biochemistry & Biotechnology 39 (1) : 57-71.
- Doyle, R. J. and Keller, K. F. 1986. Lectins in the clinical microbiology laboratory." Clinical microbiology newsletter 8 : 157-159.
- Du, Z.Y., Liu, R.R., Shao, W.Y., Mao, X.P., Ma, L., Gu, L.Q., Huang, Z.S. and Chan, A.S.C. 2006. [alpha]-Glucosidase inhibition of natural curcuminoids and curcumin analogs. European Journal of Medicinal Chemistry 41 (2): 213-218.

- Dubois, M., Gilles, K.A., Hamilton, J.K., Rebers, P.A. and Smith, F. 1956. Calorimetric method for determination of sugars and related substances. Analytical Chemistry 28 : 350-56.
- Edelman, G.M., Cunningham, B.A., Reeke, G.N.Jr., Becker, J.W., Waxdal, M .J. and Wang, J.L. 1972. The covalent and three-dimensional structure of concanavalin A. Proceedings of the National Academy of Science 69 : 2580-2584.
- Elfstrand, M. 1898. Gorberdorfer Veroffentlichungen a. Band I. Kobert, R. Uber Blutkorperchenagglutinierende Eiweisse. 1-159. Germany: Enke Stuttgart,
- Etzier, M.E. and Kabat, E.A. 1970. Purification and characterization of a lectin (plant hemagglutinin) with blood group A specificity from *Dolichos biflorus*. The Journal of Biochemistry 9 : 869-877.
- Fabregus, J. and Carracedo, A. 1989. Purification and partial characterization of tomentin: an N-acetylglucosamine-specific lectin from the green algae *Codium tomentosum*. Journal of Experimental Marine Biology and Ecology 124: 21-30.
- Foiers, A., Lebrun, E., Van Rappenbusch, R., DeNeve, R. and Strosberg, A.D. 1981. The structure of the lentil (*Lens eulinaris*) lectin. Amino acid sequence determination and prediction of the secondary structure. Journal of Biological Chemistry 256 : 5550-5560.
- Foiers, A., DeNeve, R and Strosberg, A.D. 1979. Lectin sequences as a tool for chemotaxonomical classification. Physiologie Vegtale 17 : 597-606.
- Foiers, A., Wuilmart, C., Sharon, N. and Strosberg, A.D. 1977. Extensive sequence homologies among lectins from leguminous plants. Biochemical and Biophysical Research Communications 75 : 980-986.
- Gaidamashvili, M., Ohizumi, Y., Iijima, S., Takayama, T., Ogawa, T. and Muramoto, K. 2004. Characterization of the yam tuber storage proteins from *Dioscorea batatas* exhibiting unique lectin activities. Journal of Biological Chemistry 279 (25) : 26028-26035.

- Gilbride, K.J. and Pistole, T.G. 1979. Isolation and characterization of a bacterial agglutinin in the serum of *Limulus polyphemus*. Progress in Clinical Biological Research 29 : 525-535.
- Goldstein, I.J. and Hayes, C.E. 1978. The lectins: carbohydrate-binding proteins of plants and animals. Advances in Carbohydrate Chemistry and Biochemistry 35 : 127-340.
- Goldstein, I.J. and Poretz, R. 1985. Physical, chemical and carbohydrate binding specificities of lectins. New York : Academic,
- Goldstein, I.J., Hughes, R.C., Monsigny, M., Osawa, T. and Sharon, N. 1980. What should be called a lectin. Nature 256 : 266.
- Goldstein, I.J. and Poretz, R.D. 1986. Isolation, Physicochemical Characterization and Carbohydrate-Binding Specificity of Lectins. Liener, I.E., Sharon, N. and Goldstein, I.J. The Lectins: Properties, Functions and Applications in Biology and Medicine. 35-247. Orlando, Florida : Academic Press,
- Gomez, E., Ortiz, V., Ventura, J., Campos, R. and Bourges, H. 1995. Intestinal and systemic immune responses in rats to dietary lectins. Advances in Experimental Medicine and Biology 371A : 533-536.
- Govindarajan, V.S. 1980. Turmeric-chemistry, technology and quality. CRC Critical Reviews in Food Science and Nutrition 12 : 199-301.
- Gozia, O., Ciopraga, J., Bentia, T., Lungu, M., Zamfirescu, I., Tudor, R., Roseanu, A., and Nitu, F. 1995. Antifungal properties of lectin and new chitinases from potato tuber. FEBS Letter 370 : 245-249.
- Guillot, J., Scandarizto, M. and Coutet, M. 1974. Essaid application du pouvoir agglutinant des lectines a etude du genre *Candida*. Annals of Clinical Microbiology and Antimicrobials 125 (489) : 492.
- Habsah, M., Amran, M., Mackeen, M.M., Lajis, N.H., Kikuzaki, H., Nakatani, H., Rahman, A., Ghafar, A. and Ali, A.M. 2000. Screening of Zingiberaceae

extracts for antimicrobial and antioxidant activities. Journal of Ethnopharmacology 72 : 403-410.

Hamada, S., Slade Gill, K. and Slade, H.D. 1977. Binding of lectins to *Streptococcus mutans* cells and type-specific polysaccharides, and effect on adherence. Infection and Immunity 18 : 708-716.

Hemperly, J.J., Becker, J.W. and Cunningham, B.A. 1982. The Structure and Biological Activities of Plant Lectins. Bradshaw, R.A., Hill, R., Tang, J., Liang, C., Tsao, T. and Tson, C. Proteins in Biology and Medicine. 295-409. New York: Academic,

Herre, J., Willment, J.A., Gordon, S. and Brown, G.D. 2004. The role of dectin-1 in antifungal immunity. Critical Reviews in Immunology 24 : 193-203.

Higgins, T.J.Y., Chandler, P.M., Zurawski, G., Button, S.C., and Spencer, D. 1983. The biosynthesis and primary structure of pea seed lectin. Journal of Biological Chemistry 258 : 9544-49.

Hoffman, L.M., Ma, Y. and Barker, R.F. 1982. Molecular cloning of *Phaseolus vulgaris* lectin mRNA and use of cDNA as a probe to estimate lectin transcript levels in various tissues. Nucleic Acids Research 10 : 7819-7828.

Holman, R.R. 1998. Assessing the potential for α -glucosidase inhibitors in prediabetic states. Diabetes Research and Clinical Practice 40 (Supplement 1) : s21-s25.

Horisberger, M. and Rosset, J. 1976. Localization of wheat germ agglutinin receptor sites on yeast cells by scanning electron microscopy. Experientia 32 : 998-1000.

Horisberger, M. and Rosset, J. 1977. Colloidal gold, a useful marker for transmission and scanning electron microscopy. Journal of Histochemistry and Cytochemistry 25 (4) : 295-305.

Horisberger, M., Jacqueline, R., and Heinz, B., 1976. Localization of mannan at the surface of yeast protoplasts by scanning electron microscopy. Archives of Microbiology 109 (1) : 9-14.

- Horisberger, M. and Monique, V. 1977. Location of mannan and chitin on thin sections of budding yeasts with gold markers. Archives of Microbiology 115 (1) : 1-7.
- Huang, H.C., Jan, T.R., and Yeh, S.F. 1992. Inhibitory effect of curcumin, an antiinflammatory agent, on vascular smooth muscle cell proliferation. European Journal of Pharmacology 221 (2-3) : 381-84.
- Hudgin, R.L., Pricer, W.E.Jr., Ashwell, G., Stockert, R.J. and Morell, A.G. 1974. The isolation and properties of a rabbit liver binding protein specific for asialoglycoproteins. Journal of Biological Chemistry 249 : 5536-5543.
- Iglesias, J.L., Lis, H. and Sharon, N. 1982. Purification and Properties of a D-Galactose/N-Acetyl-D- galactosamine-Specific Lectin. European Journal of Biochemistry 123 : 247-252.
- Irvin, E.L. 1976. Phytohemagglutinins (Phytolectins). Annual Review of Plant Physiology 27 : 291-319.
- James, B.S. and Stacey, F.H. 1936. Identification of Hemagglutinin of Jack Bean with Concanavalin A. Journal of Bacteriology 32 : 227-237.
- Jansons, V.K. and Paktor, J.A. 1977. The effect of temperature on concanavalin A-mediated agglutination of cells with rigid receptors. Biochimica et Biophysica Acta 467 (3) : 321-326.
- Janzen, D.H., Juster, H.B. and Liener, I.E. 1976. Insecticidal action of the phytohemagglutinin in black beans on a bruchid beetle. Science 192 : 795-796.
- Kalsi, G., Das, H.R., Babu, C.R. and Das, R.H. 1992. Isolation and characterization of a lectin from peanut roots. Biochimica et Biophysica Acta (BBA) - General Subjects 1117 (2) : 114-119.
- Kashket, S. and Guilmette, K.M. 1975. Aggregation of oral streptococci in the presence of concanavalin A. Archives of Oral Biology 20 (5-6) : 375-379.

- Kato, G., Maruyama, Y. and Nakamura, M. 1979. Role of lectins and lipopolysaccharides in the recognition process of specific legume-*Rhizobium* symbiosis. Agricultural Biology and Chemistry 43 : 1085-1092.
- Kawagishi, M., Mori, H., Uno, A., Kimura, A., Chiba, S., 1994. A sialic acid-binding lectin from the mushroom *Hericium erinaceum*. FEBS Lett 340 : 56-58.
- Khanna, N.M. 1999. Khanna, Turmeric – Nature's precious gift. Current Science 76 : 1351-1356.
- Kilpatrick, D.C., Pusztai, A., Grant, G., Graham, C. and Ewen, S.W.B. 1985. Tomato lectin resists digestion in the mammalian alimentary tract and binds to intestinal villi without deleterious effects. FEBS Lett 185 : 299-305.
- Konozy, E.H., Bernardes, E.S., Rosa, C., Faca, V., Greene, L.J. and Ward, R.J. 2003. Isolation, purification, and physicochemical characterization of a D-galactose-binding lectin from seeds of *Erythrina speciosa*. Archives of Biochemistry and Biophysics 410 (2) : 222-229.
- Kouchalakos, R.N., Bates, O.J., Bradshaw, R.A. and Hapner, K.D. 1984. Lectin from sainfoin (*Onobrychis viciifolia* Scop.) Complete amino acid sequence. Biochemistry 23 : 1824-1830.
- Kriipe, M. 1956. Blutgruppenspezifische Pflanzliche Eiweisskörper (Phyttagglutine). Stuttgart: Ferdinand Enke. 131.
- Kumar, M., Behera, A.K., Kumar, S., Srinivas, V.R., Das, H.R., Surolia, A. and Das, R.H. 1999. Expression, purification and characterization of peanut (*Arachis hypogaea*) agglutinin (PNA) from baculovirus infected insect cells. Bioscience reports 19 : 227-234.
- Kuttan, R., Bhanumathy, P., Nirmala, K. and George, M.C. 1985. Potential anticancer activity of turmeric (*Curcuma longa*). Cancer Letters 129 (2) : 197-202.
- Laemmli, U.K. 1970. Cleavage of structural proteins during the assembly of the head of bacteriophage T4. Nature 227 (5259) : 680-685.

- Lam, S.H., Chen, J.M., Kang, C.J., Chen, C.H. and Lee, S.S. 2008. [alpha]-Glucosidase inhibitors from the seeds of *Syagrus romanzoffiana*. Phytochemistry 69 (5) : 1173-1178.
- Landsteiner, K. and Raubitschek, H. 1907. Beobachtungen uber Hamolyse und Hamagglutination. Zentralblatt fur Bakteriologie, Parasitenkunde, Infektionskrankheiten und Hygiene. Zweite naturwissenschaftliche Abt.: Allgemeine, landwirtschaftliche und technische Mikrobiologie 45 : 660-667.
- Lavanya, L.V., Rameshwaram, N.R., and Siva, K.N. 2006. Affinity purification, physicochemical and immunological characterization of a galactose-specific lectin from the seeds of *Dolichos lablab* (Indian lablab beans). Protein Expression and Purification 45 (2) : 296-306.
- Liener, I.E. 1986. Nutritional Significance of Lectins. Liener, I.E., Sharon, N. and Goldstein, I.J. The Lectins: Properties, Functions and Applications in Biology and Medicine. 527-552. Orlando Florida : Academic Press,
- Lis, H. and Sharon, N. 1980. Lectins in higher plants. Marcus, A. The biochemistry of plants: a comprehensive treatise. 371-447. New York : Academic Press
- Liu, J.Y., Lin, S.J. and Lin, J.K. 1993. Inhibitory effects of curcumin on protein kinase C activity induced by 12-O-tetradecanoyl-phorbol-13-acetate in NIH 3T3 cells. Carcinogenesis 14 (5) : 857-861.
- Maheshwari, R.K., Singh, A.K., Gaddipati, J. and Srimal, R.C. 2005 Multiple biological activities of curcumin: A short review. Life Sciences 78 : 2081-2087.
- Majumdar, T. and Surolia, A. 1978. A Large Scale Preparation of Peanut Agglutinin on a New Affinity Matrix. Preparative Biochemistry and Biotechnology. 8 (2-3) : 119-131.
- Makela, O. 1957. Studies in hemagglutinins of leguminosae seeds. Annales medicae experimentalis et biologiae Fenniae 35 (11) : 1-133.

- Martinez-Cruz, M., Zenteno, E. and Cordoba, F. 2001. Purification and characterization of a galactose-specific lectin from corn (*Zea mays*) coleoptyle. Biochimica et Biophysica Acta-General Subjects 1568 (1) : 37-44.
- Matsumura, K., Higashida, K., Ishida, H., Hata, Y., Yamamoto, K., Shigeta, M., Mizuno-Horikawa, Y., Wang, X.C., Miyoshi, E., Gu, J.G. and Taniguchi, N. 2007. Carbohydrate binding specificity of a fucose-specific lectin from *aspergillus oryzae* - A novel probe for core fucose. Journal of Biological Chemistry 282 (21) : 15700-15708.
- Mau, J.L., Eric Lai, Y.C., Wang, N.P., Chen, C.C., Chang, C.H. and Chyau, C.C. 2003. Composition and antioxidant activity of the essential oil from *Curcuma zedoaria*. Food Chemistry 82 : 583-591.
- Mercy, P.D., and Ravindranath, M.H. 1992. An agglutinin with unique specificity for N-glycolyl sialic acid residues of thyroglobulin in the hemolymph of a marine crab, *Scylla serrata* (Forsk.). Experientia 48 : 498-500.
- Mialonier, G., Privat, J.P., Monsigny, M., Kahlen, G. and Durand, R. 1973. Isolement, proprietes physico-chimiques et localisation in vivo d'une phytohemagglutine (Iectine) de *Phaseolus vulgaris* L. (var. rouge). Physiologie Vegetale 2 (3) : 519-537.
- Miquel., J., Bernd, A., Sempere, J.M., Diaz-Alperi, J. and Ramirez, A. 2009. The curcuma antioxidants: pharmacological effects and prospects for future clinical use. Annual review of gerontology & geriatrics 34 : 37-46.
- Mirelman, D., Galun, E.S.R.A., Sharon, N., Lotan, R.E.U.B. 1975. Inhibition of fungal growth by wheat germ agglutinin. Nature 256 (5516) : 414-416.
- Mishkind, M.L, Palevitz, B.A. and Raikhe1, N.V. 1983. Localization of wheat germ agglutinin-like lectins in various species of the Gramineae. Science 220 : 1290-92.
- Mohan, S., Dorai, D.T., Srimal, S. and Bachhawat, B.K. 1982. Binding studies of a sialic acid-specific lectin from the horseshoe crab *Carcinoscorpius rotunda caudata* with various sialoglycoproteins. Biochemical Journal 203 : 253-261.

- Moreno, F.B.M.B., De Oliveira, T.M., Martil, D.E., Vicoti, M.M., Bezerra, G.A., Abrego, J.R.B., Cavada, B.S. and De Azevedo, W.F. 2008. Identification of a new quaternary association for legume lectins. Journal of Structural Biology 161 (2) : 133-143.
- Moreno, J., Altabblla, T. and Chrispeels, M.J. 1990. Characterization of a-amylase-inhibitor, a lectin-like protein in the seeds of *Phaseolus vulgaris*. Plant Physiology 92 : 703-709.
- Moreno, J. and Chrispeels, M.J. 1989. A lectin gene encodes the c-amylase inhibitor of the common bean. Proceedings of the National Academy of Sciences of the United States of America 86 : 7885-7889.
- Naeem, A., Ahmad, E. and Khan, R.H. 2007. An alternate high yielding purification method for *Clitoria ternatea* lectin. International Journal of Biological Macromolecules 41 : 481-486.
- Nagahora, H., Ishikawa, K., Niwa, Y., Muraki, M. and Jigami, Y. 1992. Expression and secretion of wheat germ agglutinin by *Saccharomyces cerevisiae*. European Journal of Biochemistry 210 : 989-997.
- Nagata, Y. and Burger, M. 1974. Molecular characteristics and specificity for sugar binding. Journal of Biological Chemistry 249 : 3116-3122.
- Negi, P.S., Jayaprakasha, G.K., Jagan M.R.L. and Sakariah, K.K. 1999. Antibacterial activity of turmeric oil: a byproduct from curcumin manufacture. Journal of Agricultural and Food Chemistry 47 (10) : 4297-4300.
- Ng, T.B. and Yu, Y.L. 2001. Isolation of a novel heterodimeric agglutinin from rhizomes of *Smilax glabra*, the Chinese medicinal material tufuling. The international journal of biochemistry & cell biology 33 (3) : 269-277.
- Oliveira, M.D.L., Andrade, C.A.S., Santos-Magalhaes, N.S., Coelho, L.C.B.B., Teixeira, J.A., Carneiro-Da-Cunha, M.G. and Correia, M.T.S. 2008. Purification of a lectin from *Eugenia uniflora* L. seeds and its potential antibacterial activity. Letters in Applied Microbiology 46 (3) : 371-376.

- Oliveria, J.T., Melo, V.M., Camara, M.F., Vassconcelos, I.M., Beltramini, L.M. and Machado, O.L. 2002. Purification and physicochemical characterization of a cotyledonary lectin from *Luetzelburgia Auriculata*. Phytochemistry 61 : 301-310.
- Oonmettaaree, J. 2005. Effect of the Zingiberaceae spice extracts on growth and morphological change of foodborne pathogens. Degree of Doctor of Philosophy The School of Food Technology Suranaree University of Technology.
- Osborn, T.C., Sun, A.D.C., Cardona, S.S.M., Bliss, F.A. 1988. Insecticidal activity and lectin homology of arcelin seed protein. Science 240 : 207-210.
- Percin, I., Yavuz, H., Aksoz, E. and Denizli, A. 2009. N-Acetyl-D-galactosamine-Specific Lectin Isolation from Soyflour with Poly(HPMA-GMA) Beads. Journal of Applied Polymer Science 111 (1) : 148-154.
- Pereira, C.A., Correa, A.D., Dos Santos, C.D., De Abreu, C.M.P., De Sousa, R.V. and Magalhaes, M.M. 2008. Hemagglutinin of cassava leaves (*Manihot esculenta Crantz*): partial purification and toxicity. Ciencia e Agrotecnologia 32 (3) : 900-907.
- Peumans, W.J., Ley, M.D. and Broekaert, W.F. 1983. An unusual lectin from stinging nettle (*Urtica dioica*) rhizomes. FEBS Letters 177 : 99-103.
- Peumans, W.J., Nsimba-Lubaki, M., Peeters, B., Broekaert, W.F. 1985. Isolation and characterization of a lectin from ground elder (*Aegopodium podagraria*) rhizomes. Planta 164 : 75-82
- Peumans, W.J., Stinissen, H.M. and Carlier, A.R. 1982a. Subunit exchange between lectins from different cereal species. Planta 154 : 568-572.
- Peumans, W.J., Stinissen, H.M. and Carlier, A.R. 1982b. Isolation and partial characterization of WGA-like lectins from rye (*Secale cereale*) and barley (*Hordeum vulgare*) embryos. Biochemical Journal 203 : 239-243.

- Pusztai, A. 1998. Effect of Lectin Investigation on Animal Growth and Internal Organs. Rhodes, J.M. and Mitton, J.D., lectin methods an protocols, 485-494. Totowa, New Jersey : Human Press,
- Pusztai, A. and Bardocz, S. 1995. Lectins. Biomedical Perspectives. 331. London: Taylor&Francis,
- Pusztai, A., Greer, F. and Grant, G. 1989. Specific uptake of dietary lectins into the systemic circulation of rats. Biochemical Society transactions 17 : 481-482.
- Raemaekers, R.J., De Muro, L., Gatehouse, J.A. and Fordham-Skelton, A.P. 1999. Functional phytohemagglutinin (PHA) and *Galanthus nivalis* agglutinin (GNA) expressed in *Pichia pastoris*: correct N-terminal processing and secretion of heterologous proteins expressed using the PHA-E signal peptide. European Journal of Biochemistry 265 : 394-403.
- Ratanapo, S., Ngamjunyaporn, W. and Chulavatnatol, M. 1998. Sialic acid binding lectins from leaf of mulberry (*Morus alba*). Plant Science 139 : 141-148.
- Rice, R.H and Etzler, M.E. 1974. Subunit structure of wheat germ agglutinin. Biochemical and Biophysical Research Communications 59 : 414-419.
- Richard, C., Narendra, P., Singh, K., Shade, R.E., Murdock, L.L. and Bressan, R.A. 1990. Isolation and Partial Characterization of a Seed Lectin from Tepary Bean that Delays Bruchid Beetle Development. Plant Physiology 93: 1453-1459.
- Rubinstein, N., Ibarregui, J.M., Toscano, M.A. and Rabinovich, G.A. 2004. The role of galectins in the initiation, amplification and resolution of the inflammatory response. Tissue Antigens 64: 1-12.
- Rudiger, H. 1993. Purification of Plant Lectins. Gabius, H.J. and Gabius, S., Lectins and Glycobiology, 31-46. Berlin: Springer,
- Sa, R.A., Gomes, F.S., Napoleao, T.H., Santos, N.D.L., Melo, C.M.L., Gusmao, N.B., Coelho, L.C.B.B., Paiva, P.M.G. and Bieber, L.W. 2009. Antibacterial and antifungal activities of *Myracrodruon urundeuva* heartwood. Wood Science and Technology 43 (1-2) : 85-95.

- Satoskar, R.R., Shah, S.J. and Shenoy, S.G. 1986. Evaluation of anti-inflammatory property of curcumin (diferuloyl methane) in patients with postoperative inflammation. International Journal of Clinical Pharmacology, Therapy and Toxicology 24 (12) : 651-654.
- Schlumbaum, A., Mauch, F., Vogeli, U. and Boller, T. 1986. Plant chitinases are potent inhibitors of fungal growth. Nature 324 : 365-367.
- Selitrennikoff, CP. 2001. Antifungal proteins. Applied and Environmental Microbiology 67 : 2883-2894.
- Shankar, I.P.N., Wilkinson, K.D. and Goldstein, I.J. 1976. An N-acetyl-D-glucosamine binding lectin from *Bandeiraea Simplicifolia* seeds. Archives of Biochemistry and Biophysics. 177 (1) : 330-333.
- Sharma, A., Ng, T.B., Wong, J.H. and Lin, P. 2009. Purification and Characterization of a Lectin from *Phaseolus vulgaris* cv. (Anasazi Beans). Journal of Biomedicine and Biotechnology. 2009 : 1-9.
- Sharma, O.P. 1976. Antioxidant activity of curcumin and related compounds. Biochemical Pharmacology 25 (15) : 1811-1812.
- Sharma, V. and Suroliya, A. 1994. Cloning by genomic PCR and production of peanut agglutinin in *Escherichia coli*. Gene 148 : 299-304.
- Sharon, N. and Lis, H. 1989. Lectins as cell recognition. The Journal Science 246 : 227-234.
- Sharon, N. and Lis, H. 1993. Lectins. Netherlands : Springer, 73.
- Shevchenko, A., Sunyaev, S., Loboda, A., Shevchenko, A., Bork, P., Ens, W. and Standing, K.G. 2001. Charting the Proteomes of Organisms with Unsequenced Genomes by MALDI-Quadrupole Time-of-Flight Mass Spectrometry and BLAST Homology Searching. Analytical Biochemistry 73 : 1917-1926.
- Shi, J., Xue, S.J., Kakuda, Y., Ilic, S. and Kim, D. 2007. Isolation and characterization of lectins from kidney beans (*Phaseolus vulgaris*). Process Biochemistry 42 (10) : 1436-1442.

- Sidhu, G.S., Singh, A.K., Thaloor, D., Banaudha, K.K., Patnaik, G.K., Srimal, R.C. and Maheshwari, R.K. 1998. Enhancement of wound healing by curcumin in animals." Wound Repair and Regeneration 6 (2) : 167-177.
- Sitohy, M., Doheim, M. and Badr, H. 2007. Isolation and characterization of a lectin with antifungal activity from Egyptian *Pisum sativum* seeds. Food Chemistry 104 (3) : 971-979.
- Sirat, H.M. 1994. Study on the terpenoids of *Zingiber ottensi*. Planta Medica 60 : 497.
- Sirat, H.M. and Liamen, M.R. 1995. Chemical constituents of *Alpinia purpurata*. Pertanika journal of science & technology 3 : 67-71.
- Sirat, H.M., Ranman, A.A., Itokawa, H. and Morita, H. 1996. Constituents of the rhizomes of two *Alpinia* species of Malaysia. Planta Medica 62 : 188-189.
- Skrzypezac-Jankun, E., McCabe, N.P., Selman, S.H. and Jankun, J. 2000. Curcumin inhibits lipoxygenase by binding to its central cavity: theoretical and X-ray evidence." International journal of molecular medicine 6 : 521-526.
- Srimal, R.C. and Dhawan, B.N. 1973. Pharmacology of diferuloyl methane (curcumin), a non-steroidal anti-inflammatory agent. Journal of Pharmacy and Pharmacology 25 (6) : 447-452.
- Stillmark, H. 1988. Ricin, a toxic enzyme from seeds of *Ricinus communis* L. and some other *Euphorbiaceae*. Medical School of Dorpat, Estonia.
- Stockert, R.J., Morell, A.G. and Scheinberg, I.H. 1974. Mammalian hepatic lectin. Science 186 : 365-366.
- Streicher, H. and Sharon, N. 2003. Recombinant plant lectins and their mutants. Methods Enzymol 363 : 47-77.
- Strosberg, A.D., Lauwereys, M. and Foriers, A. 1983. Molecular Evolution of Legume Lectins. Goldstein, I.J. and Etzler, M.E., Chemical Taxonomy, Molecular Biology and Function of Plant Lectins, 7-20. New York : Liss,

- Stubbs, M.E., Carver, J.P. and Dunn, R.J. 1986. Production of pea lectin in *Escherichia coli*. Journal of Biological Chemistry 261 : 6141-6144.
- Suhai, M. 2006. Spice antioxidants isolation and their antiradical activity. Journal of food composition and analysis 19 : 531-537.
- Suseelan, K.N., Mitra, R., Pandey, R., Sainis, K.B. and Krishna, T.G. 2002. Purification and characterization of a lectin from wild sunflower (*Helianthus tuberosus* L.) tubers. Archives of Biochemistry and Biophysics. 407 (2) : 241-247.
- Tunsaringkarn, T., Rungsiyothin, A. and Ruangrungrasi, N. 2008. Alpha-glucosidase inhibitory activity of Thai mimosaceous plant extracts. International Journal of Health Research 22 (1) : 29-33.
- Tchernychev, B. and Wilchek, M. 1996. Natural human antibodies to dietary lectins." FEBS Letters 397 : 139-142.
- Teichberg, V.I., Silman, I., Beitsch, D.D. and Resheff, G. 1975. A-b-galactoside binding protein from electric organ tissue of *Electrophorus electricus*." Proceedings of the National Academy of Sciences of the United States of America 72 : 1383-1387.
- Thamlikitkul, V., Jintanothaitavorn, D., Sathitmethakul, R., Vaithayaphichet, S., Trakulsomboon, S. and Danchaivijitr, S. 2001. Bacterial infections in hospitalized patients in Thailand in 1997 and 2000. Journal of The Medical Association of Thailand 84 : 666-673.
- The Wealth of India. 2001. A dictionary of Indian raw materials and industrial products, first supplement series (Vol. II). NewDelhi: National Institute of Science Communication, CSIR : 264-93.
- Tian, Q., Wang, W., Miao, C., Peng, H., Liu, B., Leng, F., Dai, L., Chen, F and Bao, J. 2008. Purification, characterization and molecular cloning of a novel mannose-binding lectin from rhizomes of *Ophiopogon japonicus* with antiviral and antifungal activities. Plant Science 175 (6) : 877-884.

- Tiphthara, P., Sangvanich, P., Maeth, M. and Petsom, A. 2007. Mannose-Binding Lectin from *Curcuma zedoaria* Rosc. Journal of Plant Biology 50 (2) : 167-173.
- Toda, S., Miyase, T., Arichi, H., Tanizawa, H. and Takino, Y. 1985. Natural antioxidants. III. Antioxidative components isolated from rhizome of *Curcuma longa* L. Chemical and Pharmaceutical Bulletin 33 (4) : 1725-1728.
- Toms, G.C and Western, A. 1971. In Chemotaxonomy of Legumes. Harborne, J.B. Boulte, D. and Turne, L., Phytohemagglutinins, 367-462. New York : Academic,
- Trifonova, T.V., Maksyutova, N.N., Timofeeva, O.A. and Chernov, V.M. 2004. Change in lectin specificity of winter wheat seedlings in the course of infection with mycoplasmas. Applied Biochemistry and Microbiology 40 (6) : 588-591.
- Tsvion, Y. and Sharon, N. 1981. Lipidmediated hemagglutination and its relevance to lectin-mediated agglutination. Biochimica et Biophysica Acta 642 : 336-344.
- Tunsaringkarn, T., Rungsiyothin, A. and Ruangrunsi, N. 2008. alpha-glucosidase inhibitory activity of thai mimosaceous plant extracts. Journal of Health Research 22 (1) : 29-33.
- Utarabhan, P. and Akkayanont, P. 1995. Purification of a lectin from *Parkia Ja Vanica* beans. Phytochemistry 38 : 281-285.
- Van de Laar, F.A., Lucassen, P.L.B.J., Akkermans, R.P., Van de Lisdonk, E.H., Rutten, G.E.H.M. and Van Weel, C. 2005. Alpha-Glucosidase inhibitors for type 2 diabetes mellitus. Cochrane Database of Systematic Reviews Journal 18 (2) : 1-146.
- Van Eijsden, R.R., Hodmaker, F.J., Diaz, C.L., Lugtenberg, B.J.J., De Pater, S. and Kijne, J.W. 1992. Mutational analysis of pea lectin. Substitution of Asn135 for Asp in the monosaccharide-binding site eliminates mannose/glucose binding activity. Plant molecular biology 20 : 1049-1058.

- Vlasak, P., Luytjes, W., Spaan, W., Palese, P., Human and bovine coronaviruses recognize sialic acid containing receptor similar to those of influenza C viruses. Proceedings of the National Academy of Sciences U.S.A. 85 : 4526-4529.
- Vodkin, L.O. 1983. Structure and Expression of Soybean Lectin Genes. Goldstein, I.J. and Etzler, M.E., Chemical Taxonomy, Molecular Biology and Function of Plant Lectins, 87-98. New York : Liss,
- Wang, H. and Ng, T.B. 2005. An antifungal protein from ginger rhizomes. Biochemical and Biophysical Research Communications 336 (1) : 100-104.
- Wang, J.L. Becker, J.W. Reeke, G.N.J. and Edelman, G.M. 1974. Favin, a crystalline lectin from *Vicia faba*. Journal of Molecular Biology 88 (1) : 259-262.
- Wang, Q., Lu-Gang, Y., Campbell, B.J., Miton, J.D. and Rhodes, J.M. 1999. Identification of intact peanut lectin in peripheral venous blood. Lancet 352 : 1831-1832.
- Watkins, W.M. and Morgan, W.T.J. 1952. Neutralization of the anti H agglutinin in eel by simple sugars. Nature 169 : 825-826.
- Wong, J.H., Wong, C.C. and Ng, T.B. 2006. Purification and characterization of a galactose-specific lectin with mitogenic activity from pinto beans." Biochemical and Biophysical Research Communications 1760 (5) : 808-813.
- Wright, C.S., Gavilanes, F. and Peterson, D.L. 1984. Primary structure of wheat germ agglutinin isolectin 2. Peptide order deduced from X-ray structure. Biochemistry 23 : 280-287.
- Wu, T.L. and Larsen, K. 2000. Zingiberaceae. Flora of China 24 : 322-377.
- Wu, A.M., Song, S., Tsai, M. and Herp, A. 2001. A Guide to the Carbohydrate Specificities of Applied Lectins-2. Wu, A.M., The Molecular Immunology of Complex Carbohydrates 2, 551-585. New York : Kluwer Academic Plenum Publishers,

- Yan, Q., Jiang, Z., Yang, S., Deng, W. and Han, L. 2005. A novel homodimeric lectin from *Astragalus mongholicus* with antifungal activity. Archives of Biochemistry and Biophysics. 442 (1) : 72-81.
- Ye, X.Y. and Ng, T.B. 2001. Isolation of Unguilin, a Cyclophilin-Like Protein with Anti-Mitogenic, Antiviral, and Antifungal Activities, from Black-Eyed Pea. Journal of Protein Chemistry 20 (5) : 353-359.
- Ye, X.Y., Ng, T.B., Tsang, P.W. and Wang, J. 2001. Isolation of a homodimeric lectin with antifungal and antiviral activities from red kidney bean (*Phaseolus vulgaris*) seeds. Journal of protein chemistry 20 (5) : 367-375.
- Ye, X.Y., Wang, H.X. and Ng, T.B. 2000. Dolichin, a New Chitinase-like Antifungal Protein Isolated from Field Beans (*Dolichos lablab*). Biochemical and Biophysical Research Communications. 269 (1) : 155-159.
- Zhu, K., Bressan, R.A., Hasegawa, P.M. and Murdock, L.L. 1996. Identification of Nacetylglucosamine binding residues in *Griffonia simplicifolia* lectin II. FEBS Letters 390 : 271-74.



ศูนย์วิทยทรัพยากร
จุฬาลงกรณ์มหาวิทยาลัย



APPENDICES

ศูนย์วิทยทรัพยากร
จุฬาลงกรณ์มหาวิทยาลัย

APPENDIX A

Preparation for non-denaturing polyacrylamide gel electrophoresis (Native-PAGE)

1. Stock solution

2 M Tris-HCl (pH 8.8)

Tris (hydroxymethyl)-aminomethane 24.2 g
Adjusted pH to 8.8 with 1 M HCl and adjusted volume to 100 ml with distilled water.

1M Tris-HCl (pH6.8)

Tris (hydroxymethyl)-aminomethane 12.1 g
Adjustes pH to 6.8 with 1M HCl and adjusted volume to 100 ml with distilled water.

1% Bromopenol blue (w/v)

Bromphenol blue 100 mg
Brought to 10 ml with distilled water and stirred until dissolved.
Filtration will remove aggregated dye.

2. Working solution

Solution A (30% (w/v) acrylamide, 0.8% (w/v) bis-acrylamide)

Acrylamide 29.2 g
N,N-methylene-bis-acrylamide 0.8 g
Adjust volume to 100 ml with distilled water

Solution B (1.5 M Tris-HCl pH 8.8)

2M Tris-HCl (pH8.8) 75 ml
Distilled water 25 ml

Solution C (0.5M Tris-HCl pH 6.8)

| | |
|-----------------------|-------|
| 1 M Tris-HCl (pH 6.8) | 50 ml |
| Distilled water | 50 ml |

10% Ammonium persulfate

| | |
|---------------------|-------|
| Ammonium persulfate | 0.5 g |
| Distilled water | 5 ml |

Electrophoresis buffer (25 mM Tris, 192 mM glycine)

| | |
|---|--------|
| Tris (hydroxymethyl-aminomethane) | 3 g |
| Glycine | 14.4 g |
| Dissolved in distilled water to 1 liter without pH adjustment (Final pH should be 8.8) | |

5x sample buffer**(312.5 mM Tris-HCl pH 6.8, 50% glycerol, 0.05% bromophenol blue)**

| | |
|----------------------|--------|
| 1M Tris-HCl (pH 6.8) | 3.1 ml |
| Glycerol | 5 ml |
| 1% Bromophenol blue | 0.5 ml |
| Distilled water | 1.4 ml |

3. Native-PAGE**7.5% Separating gel**

| | |
|-------------------------|------------|
| Solution A | 2.5 ml |
| Solution B | 2.5 ml |
| Distilled water | 5 ml |
| 10% Ammonium persulfate | 50 μ l |
| TEMED | 5 μ l |

5.0% Stacking gel

| | |
|-------------------------|------------|
| Solution A | 0.67 ml |
| Solution C | 1 ml |
| Distilled water | 2.3 ml |
| 10% Ammonium persulfate | 30 μ l |
| TEMED | 5 μ l |

Coomassie Gel Stain

| | |
|----------------------|--------|
| Coomassie Blue R-250 | 1 g |
| Methanol | 450 ml |
| Distilled water | 450 ml |
| Glacial Acetic Acid | 100 ml |

Coomassie Gel Destain

| | |
|---------------------|--------|
| Methanol | 100 ml |
| Glacial Acetic Acid | 100 ml |
| Distilled water | 800 ml |



ศูนย์วิทยทรัพยากร
จุฬาลงกรณ์มหาวิทยาลัย

APPENDIX B

Preparation for denaturing polyacrylamide gel electrophoresis

1. Stock solution

2 M Tris-HCl (pH 8.8)

Tris (hydroxymethyl)-aminomethane 24.2 g
Adjusted pH to 8.8 with 1 M HCl and adjusted volume to 100 ml with distilled water.

1M Tris-HCl (pH 6.8)

Tris (hydroxymethyl)-aminomethane 12.1 g
Adjusted pH to 6.8 with 1M HCl and adjusted volume to 100 ml with distilled water.

10% SDS (w/v)

Sodium dodecyl sulfate (SDS) 10 g
Adjusted volume to 100 ml with distilled water.

50% Glycerol (w/v)

100% Glycerol 50 ml
Added 50 ml of distilled water

1% Bromophenol blue (w/v)

Bromophenol blue 100 mg
Brought to 10 ml with distilled water and stirred until dissolved.
Filtration will remove aggregated dye.

2. Working solution

Solution A (30% (w/v) acrylamide, 0.8% (w/v) bis-acrylamide)

| | |
|--|--------|
| Acrylamide | 29.2 g |
| N, N-methylene-bis-acrylamide | 0.8 g |
| Adjust volume to 100 ml with distilled water | |

Solution B (1.5 M Tris-HCl pH 8.8, 0.4% SDS)

| | |
|----------------------|-------|
| 2M Tris-HCl (pH 8.8) | 75 ml |
| 10% SDS | 4 ml |
| Distilled water | 21 ml |

Solution C (0.5M Tris-HCl pH 6.8, 0.4% SDS)

| | |
|-----------------------|-------|
| 1 M Tris-HCl (pH 6.8) | 50 ml |
| 10% SDS | 4 ml |
| Distilled water | 46 ml |

10% Ammonium persulfate

| | |
|---------------------|-------|
| Ammonium persulfate | 0.5 g |
| Distilled water | 5 ml |

Electrophoresis buffer (25 mM Tris, 192 mM glycine, 0.1% SDS)

| | |
|-----------------------------------|--------|
| Tris (hydroxymethyl)-aminomethane | 3 g |
| Glycine | 14.4 g |
| SDS | 1 g |

Dissolved in distilled water to 1 liter without pH adjustment
(Final pH should be 8.3)

5x sample buffer (60 mM Tris-HCl pH 6.8, 25% glycerol, 2% SDS, 14.4 mM 2-mercaptoethanol, 0.1% bromophenol blue)

| | |
|---------------------|--------|
| 1M Tris-HCl (pH6.8) | 0.6 ml |
| 50% Glycerol | 5 ml |
| 10% SDS | 2 ml |
| 2-mercaptoethanol | 0.5 ml |
| 1% Bromophenol blue | 0.5 ml |
| Distilled water | 0.9 ml |

3. SDS-PAGE

15% Seperating gel

| | |
|-------------------------|------------|
| Solution A | 5 ml |
| Solution B | 2.5 ml |
| Distilled water | 2.5 ml |
| 10% Ammonium persulfate | 50 μ l |
| TEMED | 5 μ l |

5.0% Stacking gel

| | |
|-------------------------|------------|
| Solution A | 0.67 ml |
| Solution C | 1 ml |
| Distilled water | 2.3 ml |
| 10% Ammonium persulfate | 30 μ l |
| TEMED | 5 μ l |

Coomassie Gel Stain

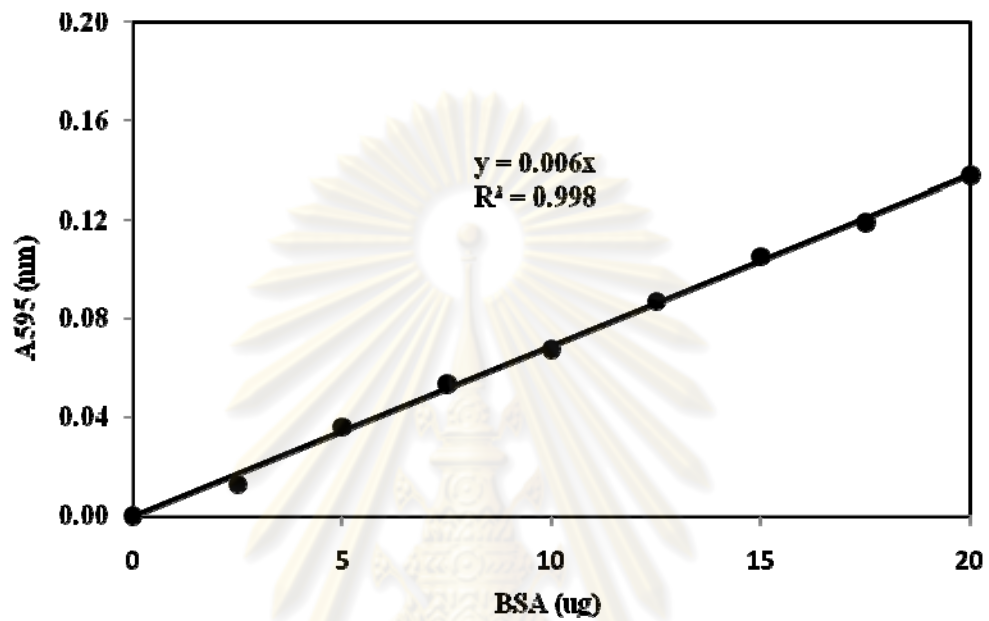
| | |
|----------------------|--------|
| Coomassie Blue R-250 | 1 g |
| Methanol | 450 ml |
| Distilled water | 450 ml |
| Glacial Acetic Acid | 100 ml |

Coomassie Gel Destain

| | |
|---------------------|--------|
| Methanol | 100 ml |
| Glacial Acetic Acid | 100 ml |
| Distilled water | 800 ml |

APPENDIX C

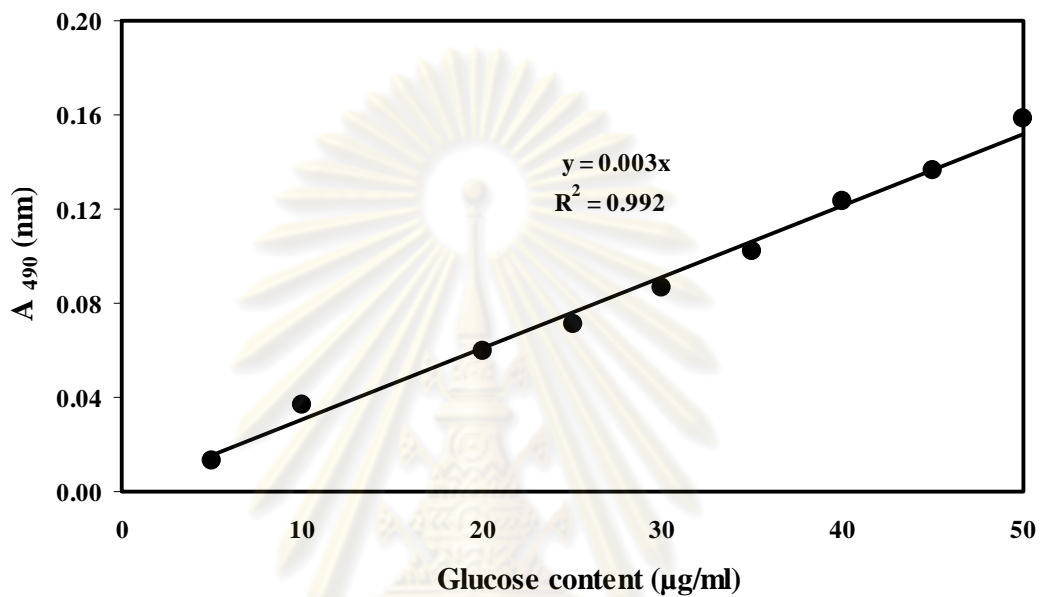
Calibration curve for protein determination Bradford method



ศูนย์วิทยทรัพยากร
จุฬาลงกรณ์มหาวิทยาลัย

APPENDIX D

Calibration curve for carbohydrate content determination by
phenol sulfuric acid method



ศูนย์วิทยทรัพยากร
จุฬาลงกรณ์มหาวิทยาลัย

APPENDIX E

Culture media

The media were prepared by sterilization in the autoclave at 121°C for 15 minutes.

1. Potato dextrose agar (PDA)

| | |
|--------------------------|---------|
| Potato, peeled and diced | 200 g |
| Glucose | 20.0 g |
| Agar | 15.0 g |
| Distilled water | 1000 ml |

Boil 200 g of peel, dried potato for 1 hours in 1000 ml of distilled water. Filter and make up the filtrate to one liter and add the glucose and agar finally sterilize by autoclaving at 121°C for 15 minutes.

2. Nutrient broth (NB)

| | |
|-----------------|---------|
| Beef extract | 3 g |
| Peptone | 5 g |
| Distilled water | 1000 ml |

3. Nutrient agar (NA)

| | |
|-----------------|---------|
| Beef extract | 3 g |
| Peptone | 5 g |
| Agar | 20 g |
| Distilled water | 1000 ml |

4. Yeast Malt broth (YB)

| | |
|-----------------|---------|
| Malt extract | 3 g |
| Yeast extract | 3 g |
| Peptone | 5 g |
| Glucose | 10 g |
| Distilled water | 1000 ml |

5. Yeast Malt agar

| | |
|-----------------|---------|
| Malt extract | 3 g |
| Yeast extract | 3 g |
| Peptone | 5 g |
| Glucose | 10 g |
| Agar | 20 g |
| Distilled water | 1000 ml |



ศูนย์วิทยทรัพยากร
จุฬาลงกรณ์มหาวิทยาลัย

APPENDIX F

Abbreviation for amino acid residues

| Amino acid | Abbreviation | |
|---------------|--------------|------------|
| | Three-letter | One-letter |
| Alanine | Ala | A |
| Arginine | Arg | R |
| Asparagine | Asn | N |
| Aspartic acid | Asp | D |
| Cysteine | Cys | C |
| Glutamic acid | Glu | E |
| Glutamine | Gln | Q |
| Glycine | Gly | G |
| Histidine | His | H |
| Isoleucine | Ile | I |
| Leucine | Leu | L |
| Lysine | Lys | K |
| Methionine | Met | M |
| Phenylalanine | Phe | F |
| Proline | Pro | P |
| Serine | Ser | S |
| Threonine | Thr | T |
| Tryptophan | Trp | W |
| Tyrosine | Tyr | Y |
| Valine | Val | V |

BIOGRAPHY

Miss Pariyaporn Petnual was born on January 26, 1984 in Bangkok, Thailand. She graduated with a Bachelor Degree of Science from the Faculty of Animal Science And Agricultural Technology, Silpakorn University in 2006. She had been studies for a Master Degree of Science in Biotechnology, the Faculty of Science, Chulalongkorn University since 2007.

Academic presentation;

1) Petnual, P., Karnchanatat, A. and Sangvanich, P. Isolate of lectin from rhizomes of *Curcuma longa* L. with antifungal activity. The 2nd BMB Conference: Biochemistry and Molecular Biology for Regional Sustainable Development. 7-8 May 2009. Faculty of Science, Khon Kaen Universtiy, Khon Kaen, Thailand.

2) Petnual, P., Karnchanatat, A. and Sangvanich, P. Isolate of lectin from rhizomes of *Curcuma longa* L. with antifungal activity. The 4th Annual Symposium of the Protein Society of Thailand (PST). 26-28 August 2009. Chulabhorn Research Institute Conference Center. Bangkok, Thailand.

ศูนย์วิทยทรัพยากร
จุฬาลงกรณ์มหาวิทยาลัย