

CHAPTER III

RESULTS & DATA

Descriptions of the Plants

Barleria cristata Linn.: (Fig. 5, 6, 7, 8, 9)

"Angkaap" is an erect, unarmed, much-branched shrub, 1 to 3 metres in height, usually cultivated for ornamental purposes as a hedge.

The branches are sparingly hairy. The leaves are elliptic-oblong-lanceolate or subobovate, opposite, entire, up to 16 centimetres long and 5 centimetres broad, pointed at the tip, and somewhat hairy beneath; the petioles are about 1 centimetre long.

The flowers are borne singly or in pairs, and are terminal or in the upper axils of the leaves.

The bracteoles are linear, 0.8 to 1.8 centimetres long, with an apical spinule.

Sepals 4, in opposite pairs. The two outer sepals are green, ovate-lanceolate, nearly 2 centimetres long, persistent, and laciniately toothed. The inner sepals are 0.75 to 1 centimetre long, very acute, much narrower than the outer ones. The sepals have an apical spinule.

The corolla is 5 to 7 centimetres long, slender-tubed, and winged above, with five subequal ovate lobes; the limb is 3.5 to 5 centimetres in diameter, violet or violet with white bands, rarely entirely white.

The androecium consists of four epipetalous stamens, inserted at the base of the widening of the corolla-tube. The two anterior stamens are fertile, exerted, with oblong 2-celled anthers; the two posterior ones are very much smaller, with effete anthers. The longer filaments are basally distinctly pubescent; the shorter ones are villous throughout. Anantherous staminodes are present.

The gynoecium consists of a superior ovary, half-enclosed by a toothed cup disc. It is bicarpellary, with two ovules in each carpel. The style is long, slender, filiform and terminates with a subentire stigma.

The fruit is a compressed ovate oblong capsule, pointed at the apex, 1.5 to 1.8 centimetres long, containing four compressed seeds. The seeds is orbicular and silky.

Barleria lupulina Lindl.: (Fig. 10, 11, 12, 13, 14)

"Salet phangphon" is a small spiny bush, 1 to 2 metres in height, often cultivated for medicinal and ornamental purposes.

All or for the greater part of the flowerless leaf-axils of the plant bear a fascicle of two divaricated, diclivityous, very sharp, 1 to 2 centimetres long spines.

The leaves are linear-lanceolate, opposite, entire, rather rigidly coriaceous, dark green with a red midrib above, paler beneath, glabrous or subglabrous, up to 15 centimetres long and 2.7 centimetres broad, with an apical spinule; the petioles are about 0.5 centimetres long.

The flowers are all in erect or nodding, 3.5 to 9 centimetres long terminal spikes.

The bracteoles are erect, imbricate, conspicuously convex, broadly obovate, green with a purple upper half, shortly pubescent, with many small cupular glands on the back of the lower half, 1.5 to 2 centimetres long and 1.2 to 2 centimetres broad, with an apical spinule.

Sepals 4, in opposite pairs. The segments are shortly aristate, pubescent, little differing in length, 1 to 1.2 centimetres long, spine-tipped, persistent.

The corolla is orange-yellow, 4 to 5 centimetres long, slender-tubed, funnel-shaped upwards, with five subequal elliptic lobes; the lobe is 1 to 1.5 centimetres long.

Stamens 4, inserted at the base of the widening of the corolla-tube. The two anterior stamens are fertile, with oblong 2-celled anthers; the two posterior ones are rudimentary, very much smaller, and are accompanied by a minute staminode. The shorter stamens and the staminodes are straight.

The ovary is superior, half-enclosed by an annular disc. It consists of two carpels, with one ovule in each. The style is long, slender, filiform, glabrous; the stigma is subentire.

The fruit is a compressed ovate capsule, 1.5 to 1.7 centimetres long, tipped by a robust, solid beak. It contains two compressed, ovate, silky seeds. The seed is about 0.6 centimetre in diameter.

Barleria prionitis Linn.: (Fig. 15, 16, 17, 18, 19)

"Angkaap nuu" is a small, stiff, prickly, branched shrub, 1 to 2 metres in height, often cultivated as a garden ornamental in low hedges.

The branchlets are cylindrical, swollen above nodes, usually very prickly, rarely unarmed; and are densely scabrid lineolate, sometimes puberulous. The slender, very sharp, 0.5 to 1 centimetre long spines occur in all or most axils, in a fascicle of three to five patent or declivitous, divaricated branches.

The leaves are elliptic, opposite, entire, narrowed and pointed at both ends, firmly herbaceous to thinly coriaceous, light green or grass-green with a not-red costa on the upper surface, glabrous or pubescent on the nerves beneath, 5 to 18 centimetres long and 3 to 6.5 centimetres broad, with an apical spinule. The petioles are about 0.5 centimetre long; the petioles of the lower leaves are usually distinct, sometimes 1.3 to 4 centimetres long.

The flowers are axillary, 1 to 3 nate, with the upper ones in terminal spikes.

The bracts are green, patent during anthesis, linear-lanceolate-channelshaped, spine-tipped, hard, glandless, glabrous, entire, 1.2 to 2.6 centimetres long and 0.2 to 0.6 centimetre broad, with the larger outer bract usually foliaceous.

The calyx is persistent, formed of four glabrous green sepals, in opposite pairs. The sepals are broadly lanceolate, acuminate, long aristate, with an apical spinule. The two outer sepals are 1.5 to 2 centimetres long; the inner ones are about 1.3 centimetres long.

The corolla is yellow, 4 to 5 centimetres long, glabrous or puberulous. The corolla-tube is elongate, funnel-shaped upwards, pubescent outside, with five subequal elliptic lobes; the limb is 3.5 to 4 centimetres in diameter.

The stamens are epipetalous, inserted at the base of the widening of the corolla-tube, with two anterior ones fertile, exerted; the two posterior ones are very much smaller, accompanied by a minute staminode. The shorter stamens and the staminodes are apically curved.

The ovary is superior, half enclosed by an annular disc, consisting of two 1-ovuled carpels. The style is long, slender, glabrous, with an entire stigma.

The fruit is a compressed ovoid capsule, 1.5 to 2 centimetres long, with a long tapering solid beak. It contains two compressed, ovate, silky seeds. The seed is about 0.7 centimetre in diameter.

Barleria strigosa Willd.: (Fig. 20, 21, 22, 23, 24)

"Sangkoranee" is a small, branched-shrub, 1 to 1.5 metres in height. The plant grows wild in forests, and is sometimes cultivated as a garden ornamental.

The branches of the plant are covered with depressed, sharp, thin, straight hairs.

The leaves are ovate acute, long decurrent on the petiole, opposite, entire, up to 21 centimetres long and 7.5 centimetres broad, subglabrous above, fulvous-strigose on the nerves beneath; the petioles are 1 to 2.5 centimetres long or none, subulate by the much decurrent leaf-base.

The flowers are in many-flowered cincinni, or very dense spikes, more or less crowded at the tops of the branchlets. The flower spikes are often glomerate, 3 to 8 centimetres in diameter, always turned to one side.

The bracteoles are 1.5 to 2.5 centimetres long, lanceolate or subovate, conspicuously reticulate-veined when viewed in transmitted light.

The sepals are in two opposite pairs, without an apical spinule. The two outer sepals are very much the larger, 2.5 to 3 centimetres long, ovate, nervose, ciliate-denticulate, on both sides densely covered with appressed, rather long, yellowish-brown hairs; the anterior one is

acutely bidentate; the posterior one is entire. The inner sepals are 1.7 to 2.3 centimetres long.

The corolla is light blue, 4.5 to 7 centimetres long, slender-tubed, funnel-shaped upwards, shortly glandular pubescent, with five subequal ovate lobes; the lobe is 1.2 to 1.7 centimetres long.

The stamens are epipetalous, with two anterior ones fertile, exerted; the two posterior ones are rudimentary, very much smaller, accompanied by a minute staminode. The longer filaments are glabrous or subglabrous; the shorter ones are villous throughout.

The disc is a toothed cup half enclosing the ovary. The ovary is superior, consisting of two 2-ovuled carpels. The style is long, slender, filiform, glabrous, with a shortly bifid stigma.

The fruit is a compressed ovate-oblong capsule, 1.7 to 2 centimetres long, tipped by a robust, solid beak, and containing four compressed seeds. The seed is silky, orbicular, about 0.5 centimetre in diameter.

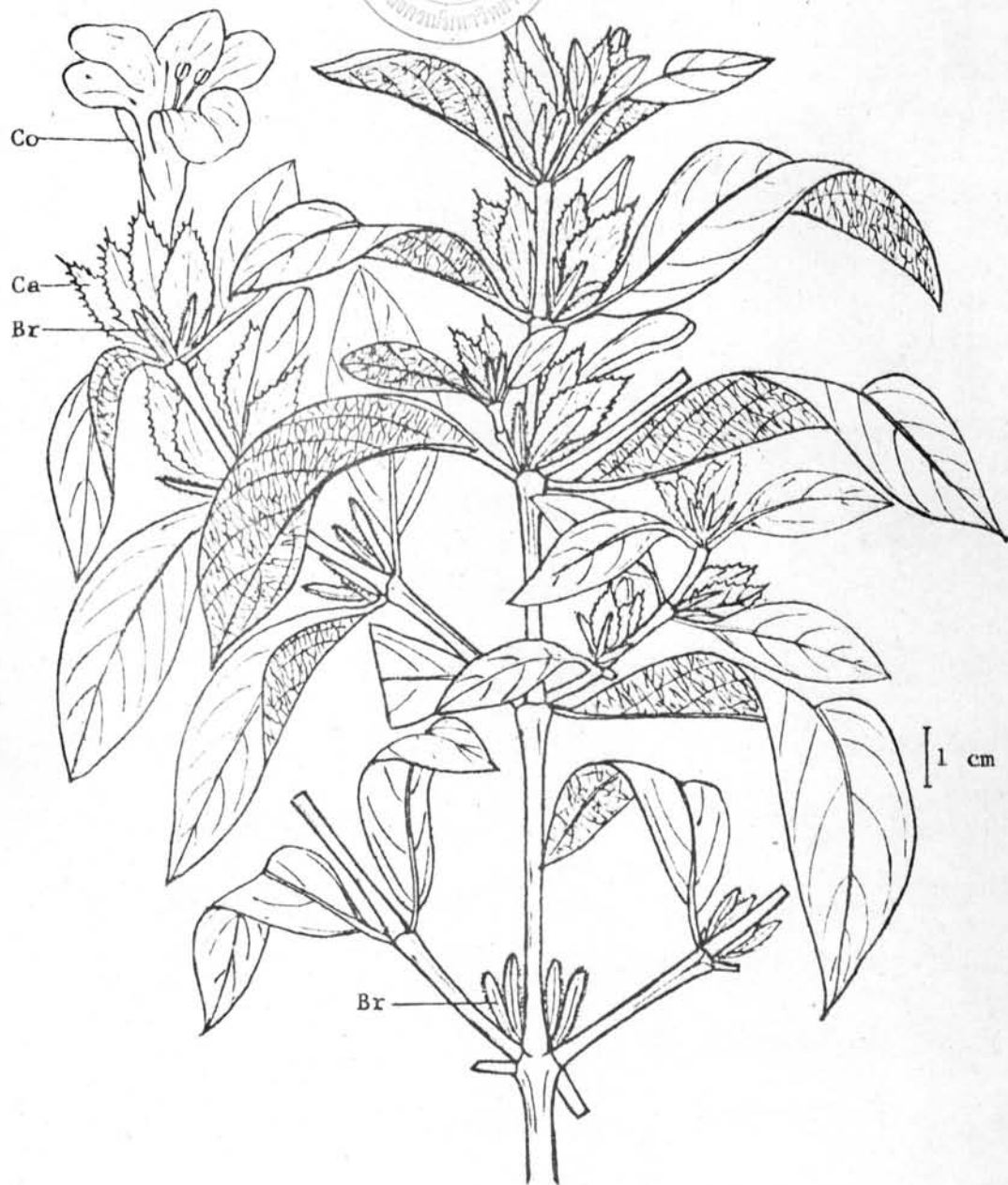


Fig. 5. *Barleria cristata* Linn. - x 4/5

Flowering branches showing opposite leaves, flower spikes and persistent bracts.

Br = bract; Ca = calyx; Co = corolla.

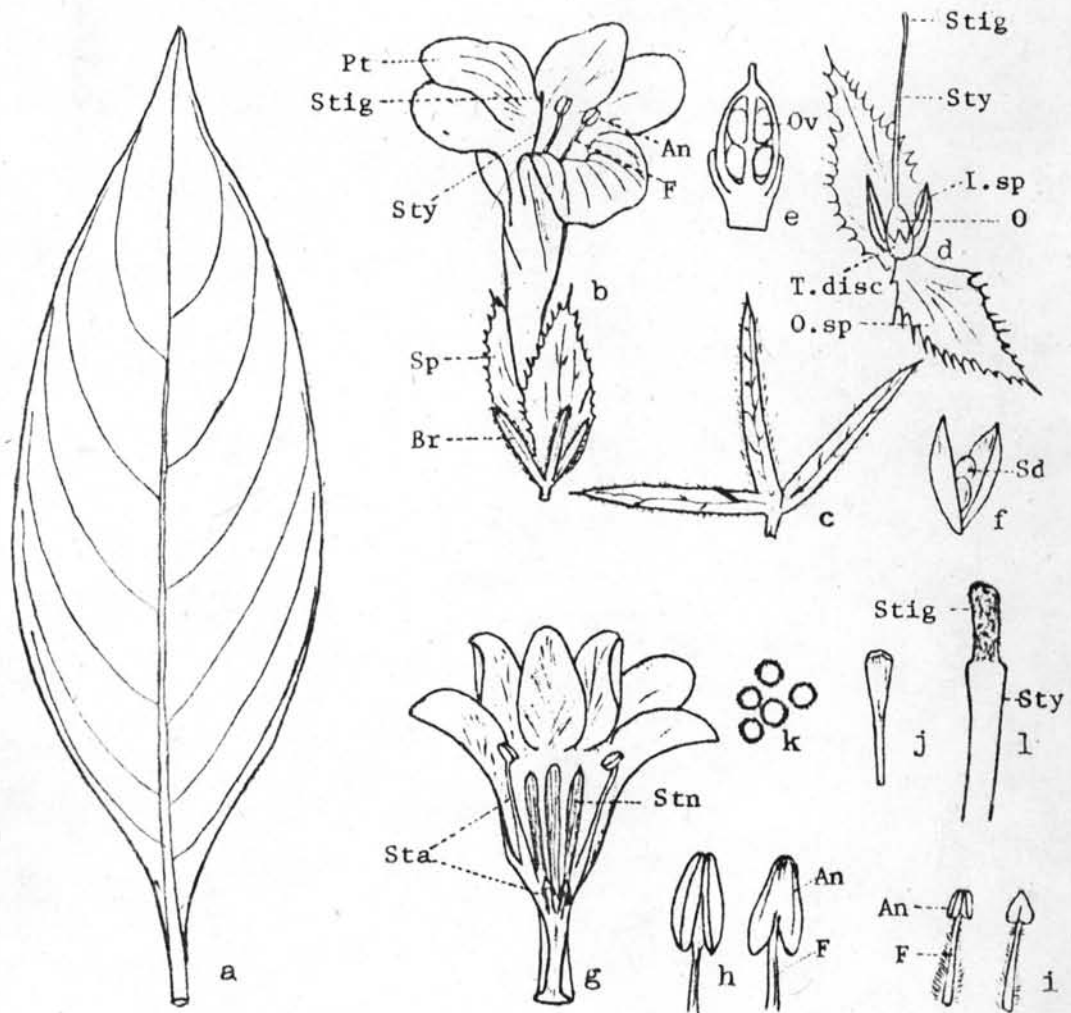


Fig. 6. *Barleria cristata* Linn.

- a = Leaf - x 1
 b = Flower - x 1
 c = Bracts - x 2
 d = Pistil with disc, inner and outer sepals - x 1
 e = Ovary, longitudinal section, with ovules - x 3
 f = Splitting capsule with seeds - x 1
 g = Opened corolla-tube - x 1
 h = Fertile anthers of the longer stamens - x 4
 i = Shorter stamens with effete anthers - x 4
 j = Staminode - x 2
 k = Pollen grains - x 40; l = Stigma and style - x 10.

An = anther; Br = bract; F = filament; I.sp = inner sepal; O = ovary;
 O.sp = outer sepal; Ov = ovule; Pt = petal; Sd = seed; Sp = sepal;
 Sta = stamen; Stig = stigma; Stn = staminode; Sty = style;
 T.disc = toothed cup disc.

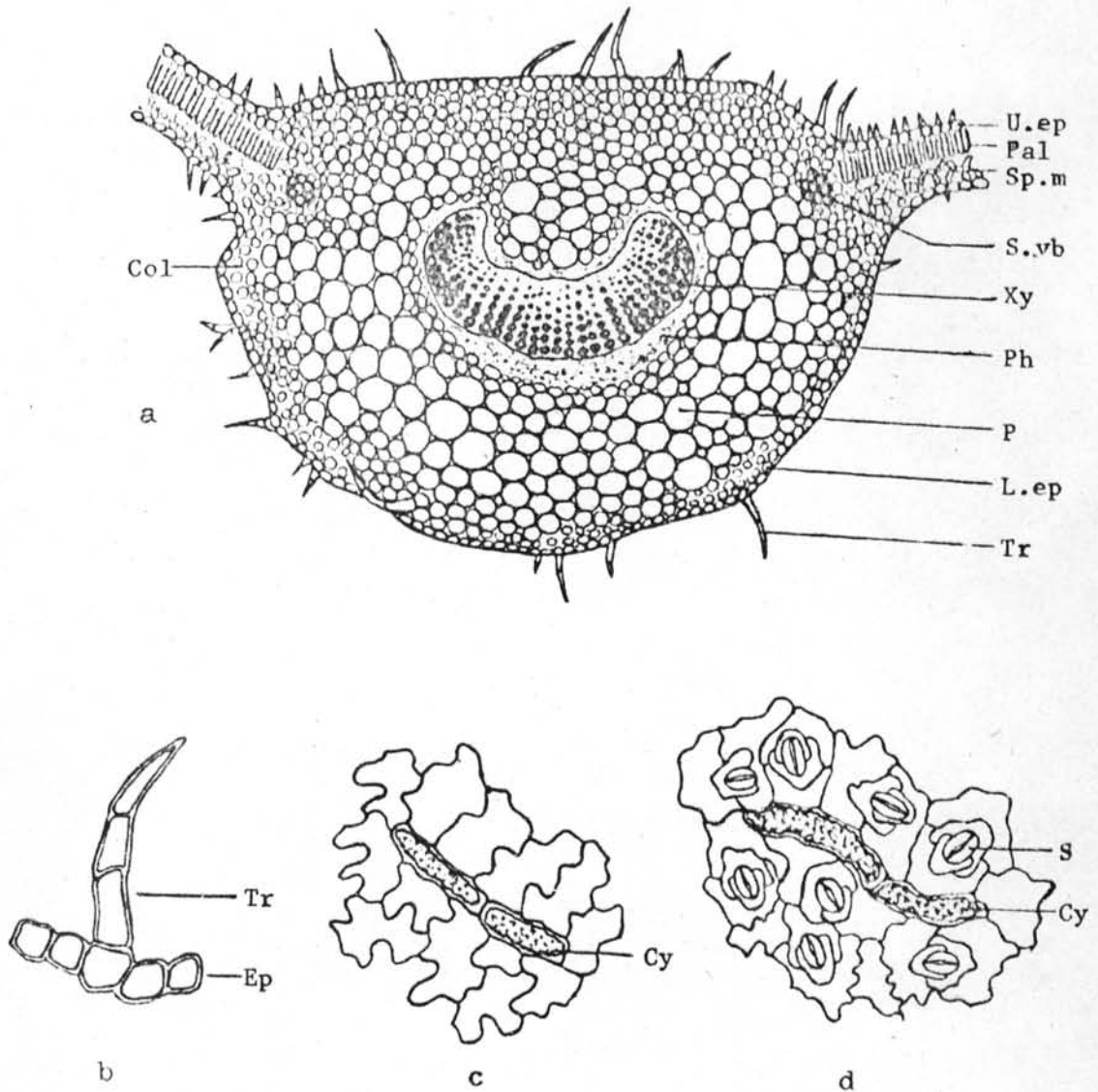


Fig. 7. *Barleria cristata* Linn.

a = Transverse section of the midrib of the leaf from the basal region - x 75

b = Epidermal trichome - x 300

c = Upper epidermis of the leaf in surface view - x 300

d = Lower epidermis of the leaf in surface view - x 300.

Col = collenchyma; Cy = cystolith; Ep = epidermis; L.ep = lower epidermis; P = parenchyma; Pal = palisade; Ph = phloem; S = stomata; Sp.m = spongy mesophyll; S.vb = small vascular bundle; Tr = trichome; U.ep = upper epidermis; Xy = xylem.

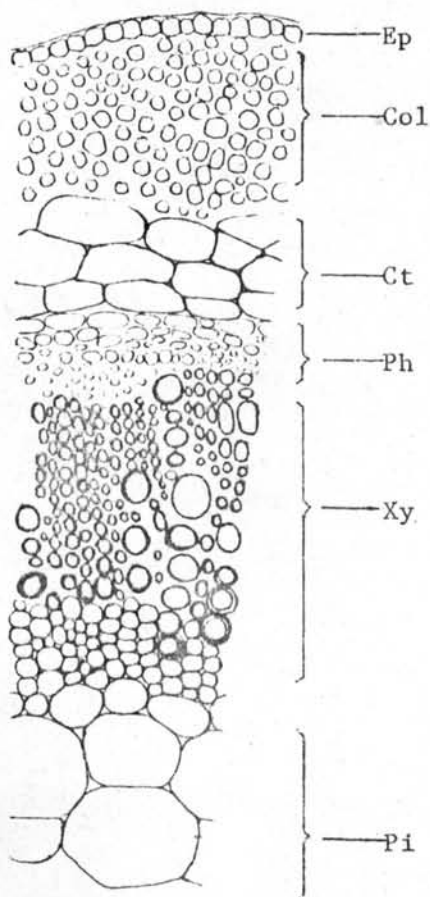


Fig. 8. *Barleria cristata* Linn.
Transverse section of young stem - x 100.

Col = collenchyma; Ct = cortex;
Ep = epidermis; Ph = phloem; Pi = pith;
Xy = xylem.

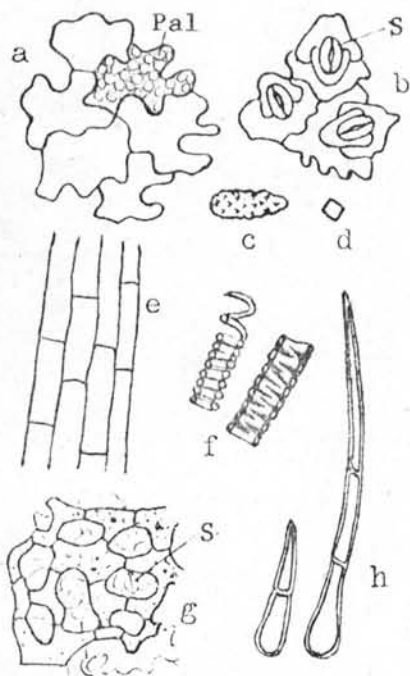


Fig. 9. *Barleria cristata* Linn.
Elements of leaf powder - x 300.

a = Upper epidermal cells and the
underlying palisade cells
b = Lower epidermal cells with stomata
c = Calcium carbonate crystal
d = Calcium oxalate crystal
e = Epidermis over the midrib
f = Vessel elements: helical, reticulate
g = Spongy cells with the underlying
lower epidermal cells and stomata
h = Trichomes.

Pal = palisade; S = stomata.

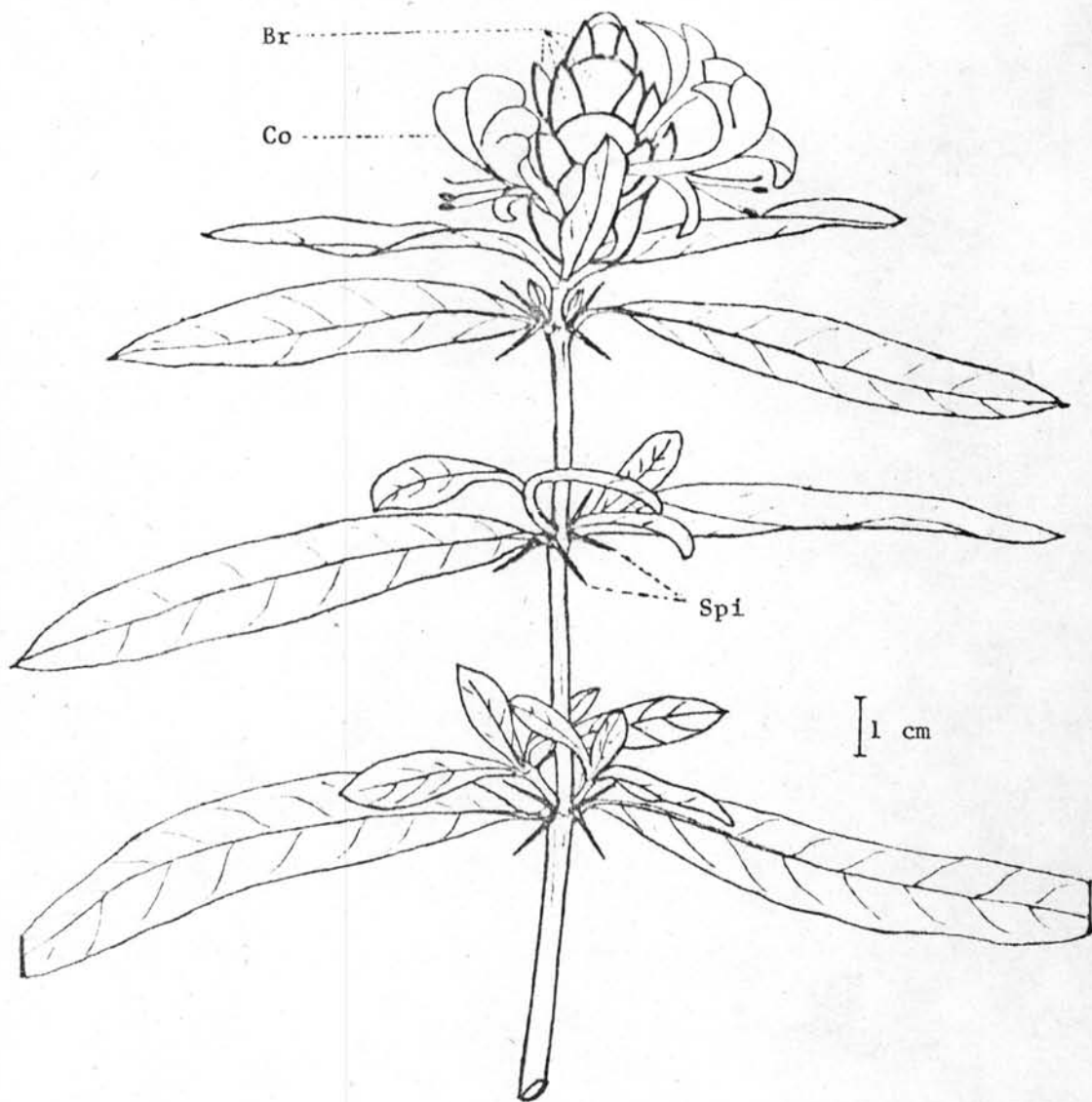


Fig. 10. *Barleria lupulina* Lindl. - x 4/5

A flowering branch showing opposite leaves, spines in the flowerless leaf-axils, and a flower spike.

Br = bract; Co = corolla; Spi = spine.

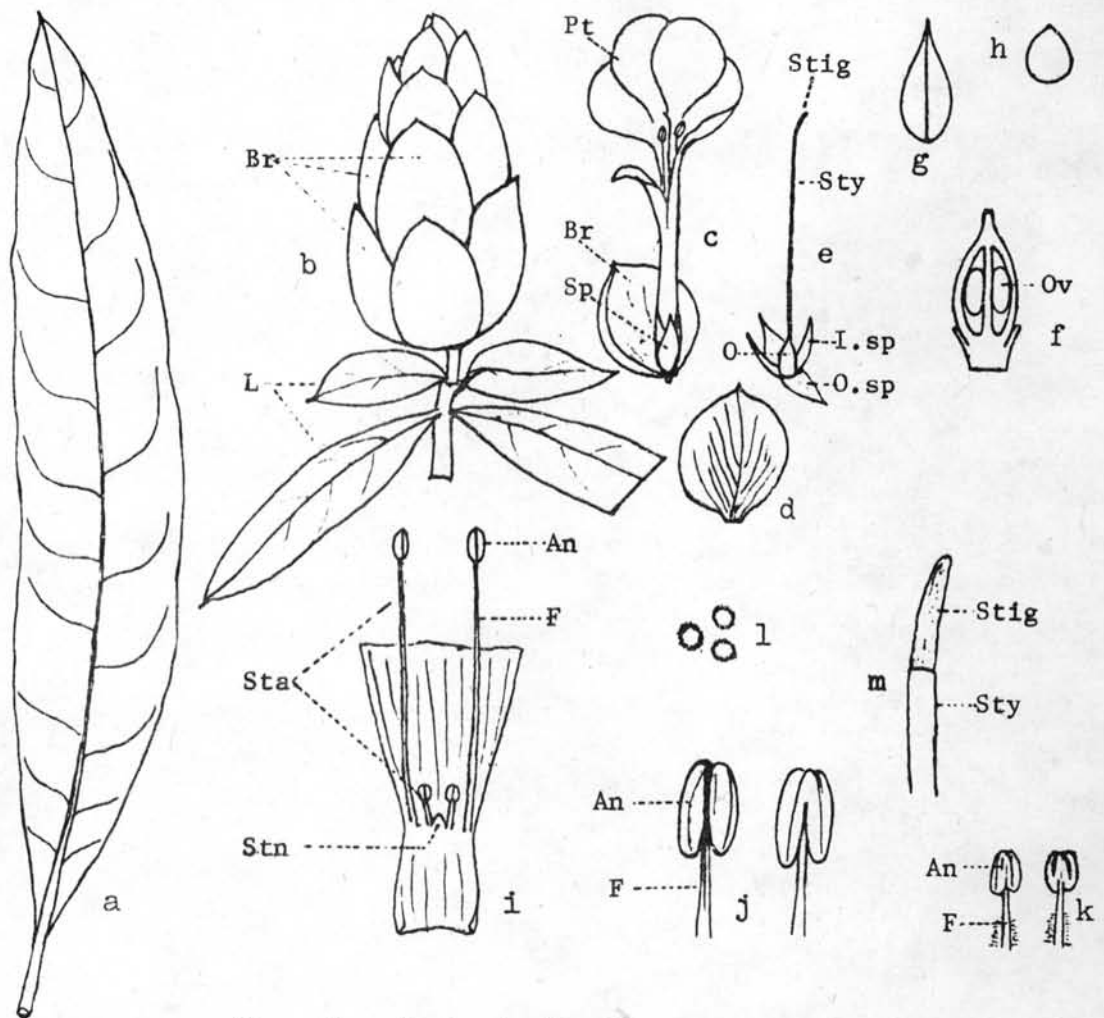


Fig. 11. *Barleria lupulina* Lindl.

- a = Leaf - x 1
 b = Young flower spike - x 1
 c = Floret - x 1
 d = Bract - x 1
 e = Pistil with inner and outer sepals - x 1
 f = Ovary, longitudinal section, with ovules - x 4
 g = Capsule - x 1
 h = Seed - x 1
 i = Opened corolla-tube - x 1½
 j = Fertile anthers of the longer stamens - x 6
 k = Shorter stamens - x 6
 l = Pollen grains - x 40
 m = Stigma and style - x 10.

An = anther; Br = bract; F = filament; I.sp = inner sepal; L = leaf;
 O = ovary; O.sp = outer sepal; Ov = ovule; Pt = petal; Sp = sepal;
 Sta = stamen; Stig = stigma; Stn = staminode; Sty = style.

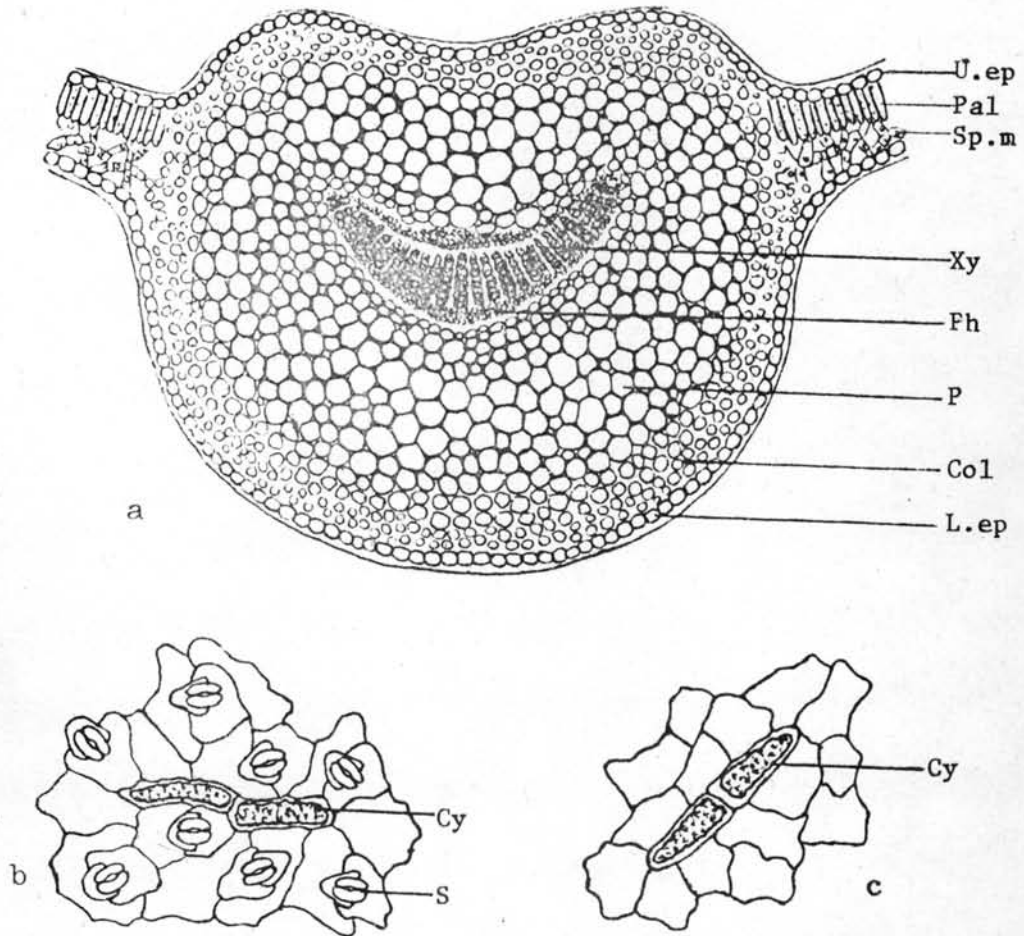


Fig. 12. *Barleria lupulina* Lindl.

a = Transverse section of the midrib of the leaf from the basal region - x 80

b = Lower epidermis of the leaf in surface view - x 300

c = Upper epidermis of the leaf in surface view - x 300.

Col = collenchyma; Cy = cystolith; L.ep = lower epidermis;
 P = parenchyma; Pal = palisade; Ph = phloem; S = stomata;
 Sp.m = spongy mesophyll; S.vb = small vascular bundle; Tr = trichome;
 U.ep = upper epidermis; Xy = xylem.

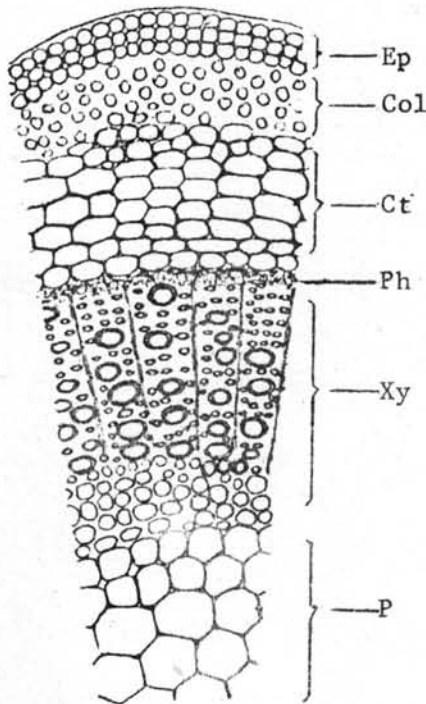


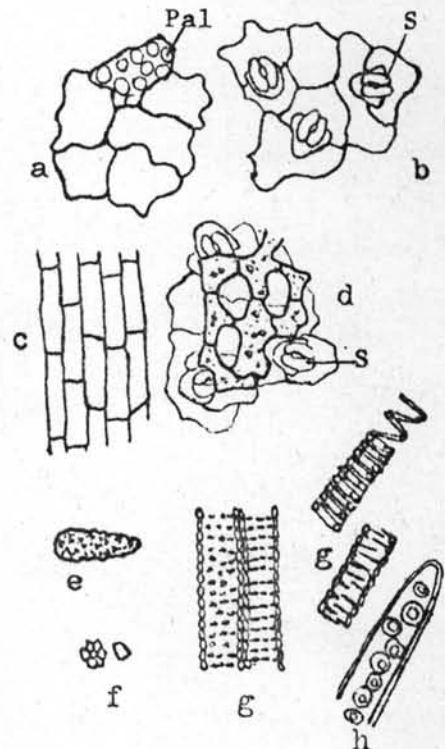
Fig. 13. *Barleria lupulina* Lindl.
Transverse section of young stem - x 70.

Col = collenchyma; Ct = cortex;
Ep = epidermis; Ph = phloem; P = pith;
Xy = xylem.

Fig. 14. *Barleria lupulina* Lindl.
Elements of leaf powder - x 300.

- a = Upper epidermal cells and the underlying palisade cells
b = Lower epidermal cells with stomata
c = Epidermis over the midrib
d = Spongy cells with the underlying lower epidermal cells and stomata
e = Calcium carbonate crystal
f = Calcium oxalate crystals
g = Vessel elements: pitted, scalariform, helical, reticulate
h = Trachied.

Pal = palisade; S = stomata.



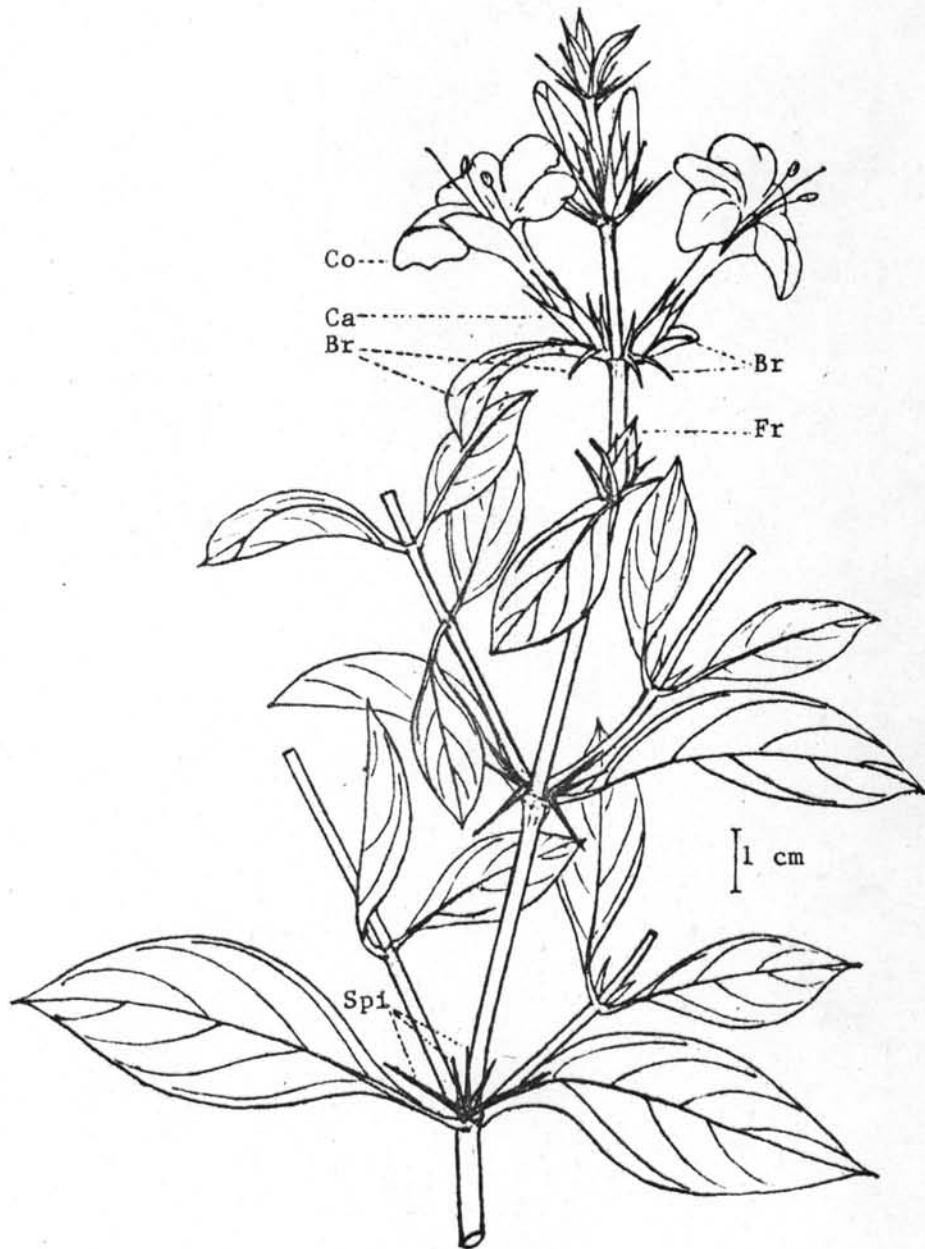


Fig. 15. *Barleria prionitis* Linn. - x 4/5

A flowering branch showing opposite leaves, spines, flower spike and fruit.

Br = bract; Ca = calyx; Co = corolla; Fr = fruit; Spi = spine.

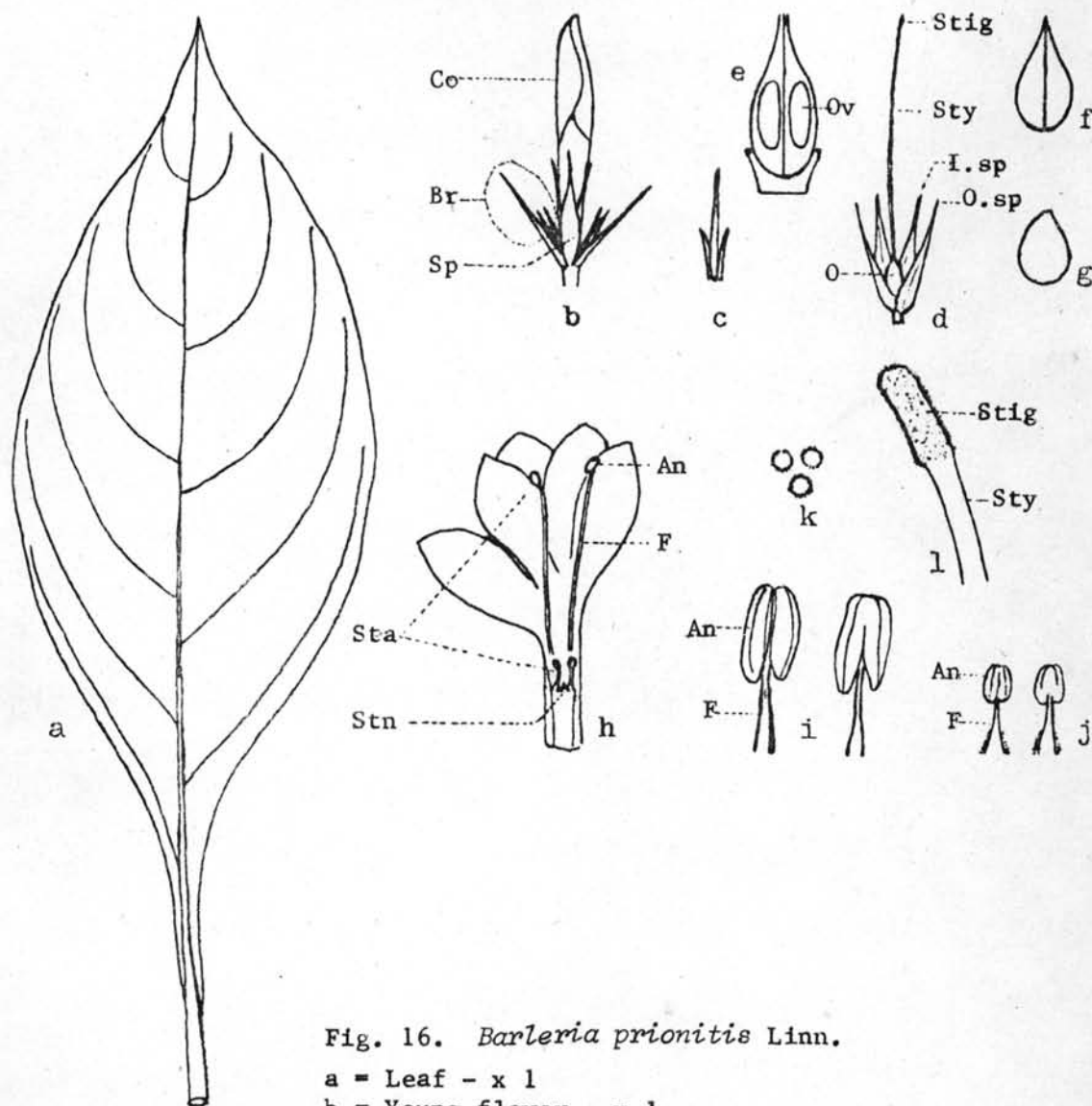


Fig. 16. *Barleria prionitis* Linn.

- a = Leaf - x 1
 b = Young flower - x 1
 c = Bracts - x 1
 d = Pistil with inner and outer sepals - x 1
 e = Ovary, longitudinal section, with ovules - x 5
 f = Capsule - x 1
 g = Seed - x 1
 h = Opened corolla-tube - x 1
 i = Fertile anthers of the longer stamens - x 4
 j = Shorter stamens with effete anthers - x 4
 k = Pollen grains - x 40
 l = Stigma and style - x 10.

An = anther; Br = bract; Co = corolla; F = filament; I.sp = inner sepal;
 O = ovary; O.sp = outer sepal; Ov = ovule; Sp = sepal; Sta = stamen;
 Stig = stigma; Stn = staminode; Sty = style.

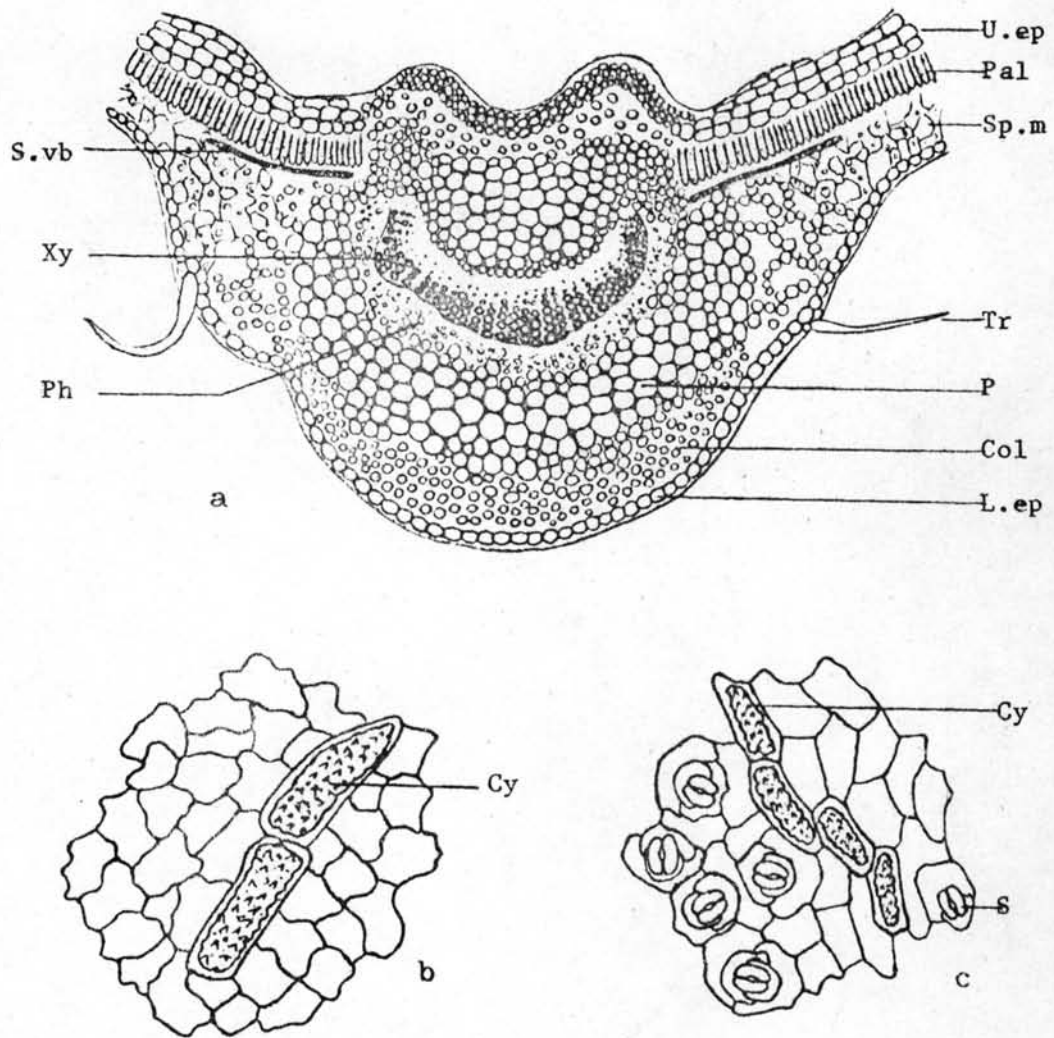


Fig. 17. *Barleria prionitis* Linn.

a = Transverse section of the midrib of the leaf from the basal region - x 75

b = Upper epidermis of the leaf in surface view - x 300

c = Lower epidermis of the leaf in surface view - x 300.

Col = collenchyma; Cy = cystolith; L.ep = lower epidermis; P = parenchyma; Pal = palisade; Ph = phloem; S = stomata; Sp.m = spongy mesophyll; S.vb = small vascular bundle; Tr = trichome; U.ep = upper epidermis; Xy = xylem.

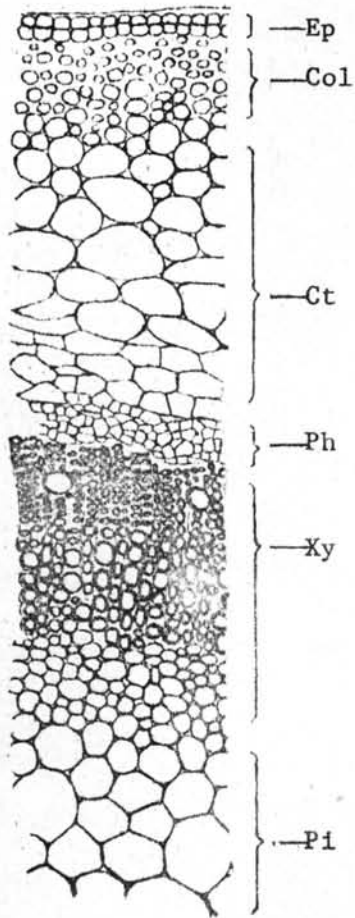


Fig. 18. *Barleria prionitis* Linn.
Transverse section of young stem -
x 100.

Col = collenchyma; Ct = cortex;
Ep = epidermis; Ph = phloem; Pi = pith;
Xy = xylem.

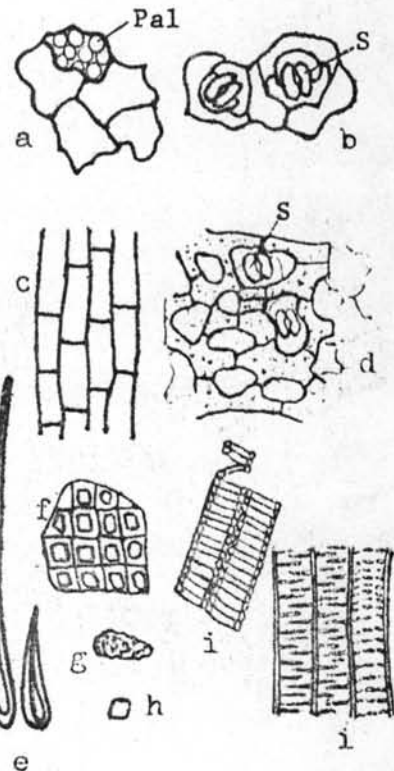


Fig. 19. *Barleria prionitis* Linn.
Elements of leaf powder - x 300.

- a = Upper epidermal cells and the
underlying palisade cells
b = Lower epidermal cells with stomata
c = Epidermis over the midrib
d = Spongy cells with the underlying
lower epidermal cells and stomata
e = Trichomes
f = Crystal fibre fragment
g = Calcium carbonate crystal
h = Calcium oxalate crystal
i = Vessel elements: helical,
reticulate, scalariform.

Pal = palisade; S = stomata.

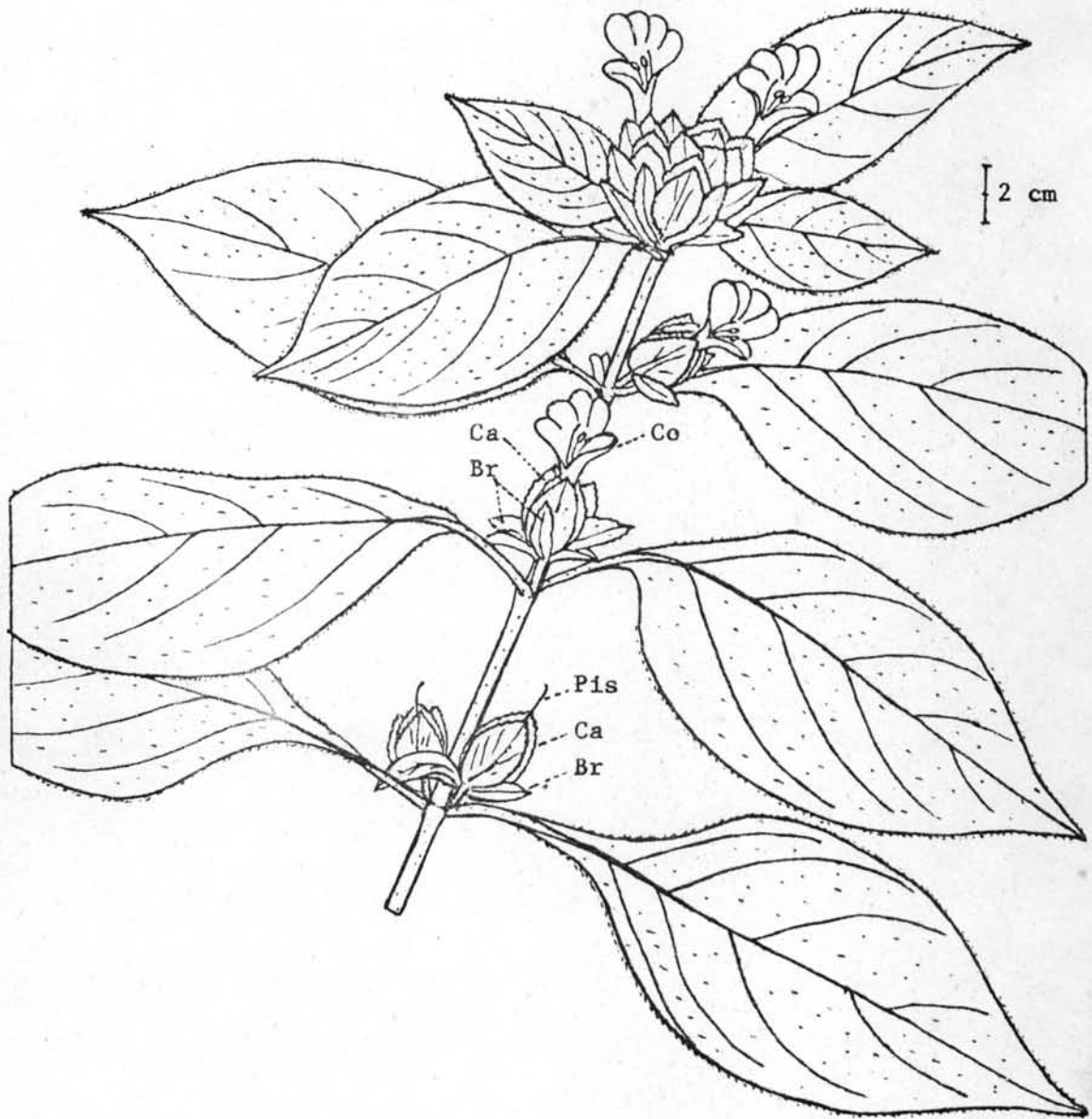


Fig. 20. *Barleria strigosa* Willd. - x 2/5

A flowering branch showing opposite leaves and flower spikes.

Br = bract; Ca = calyx; Co = corolla; Pis = pistil.

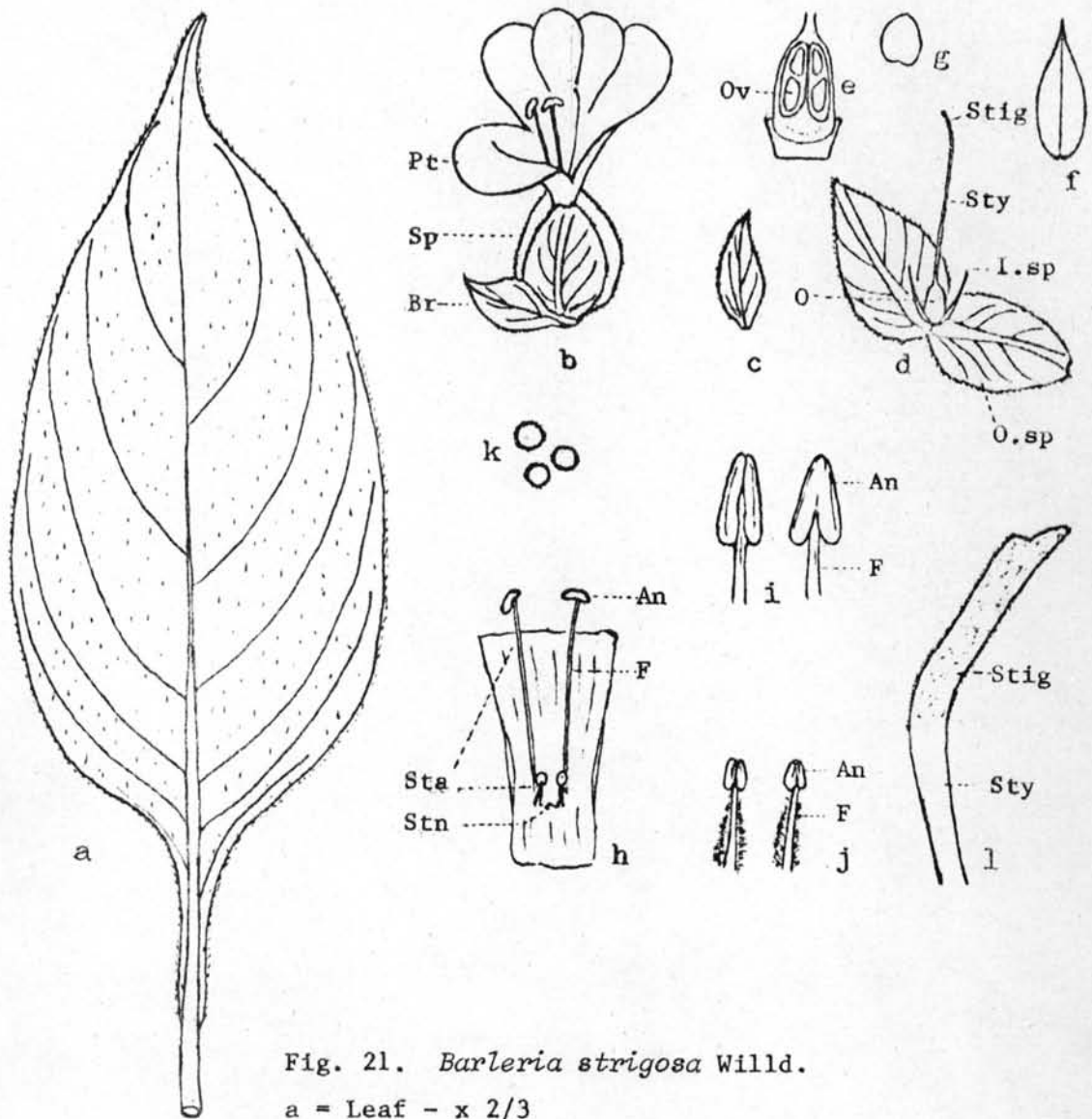


Fig. 21. *Barleria strigosa* Willd.

a = Leaf - x 2/3

b = A floret - x 4/5

c = Bract - x 4/5

d = Pistil with inner and outer sepals - x 4/5

e = Ovary, longitudinal section, with ovules - x 3

f = Capsule - x 1

g = Seeds - x 1

h = Opened corolla-tube - x 1

i = Fertile anthers of the longer stamens - x 4

j = Shorter stamens with effete anthers - x 4

k = Pollen grains - x 40

l = Stigma and style - x 10.

An = anther; Br = bract; F = filament; I.sp = inner sepal; O = ovary;
 O.sp = outer sepal; Ov = ovule; Pt = petal; Sp = sepal; Sta = stamen;
 Stig = stigma; Stn = staminode; Sty = style.

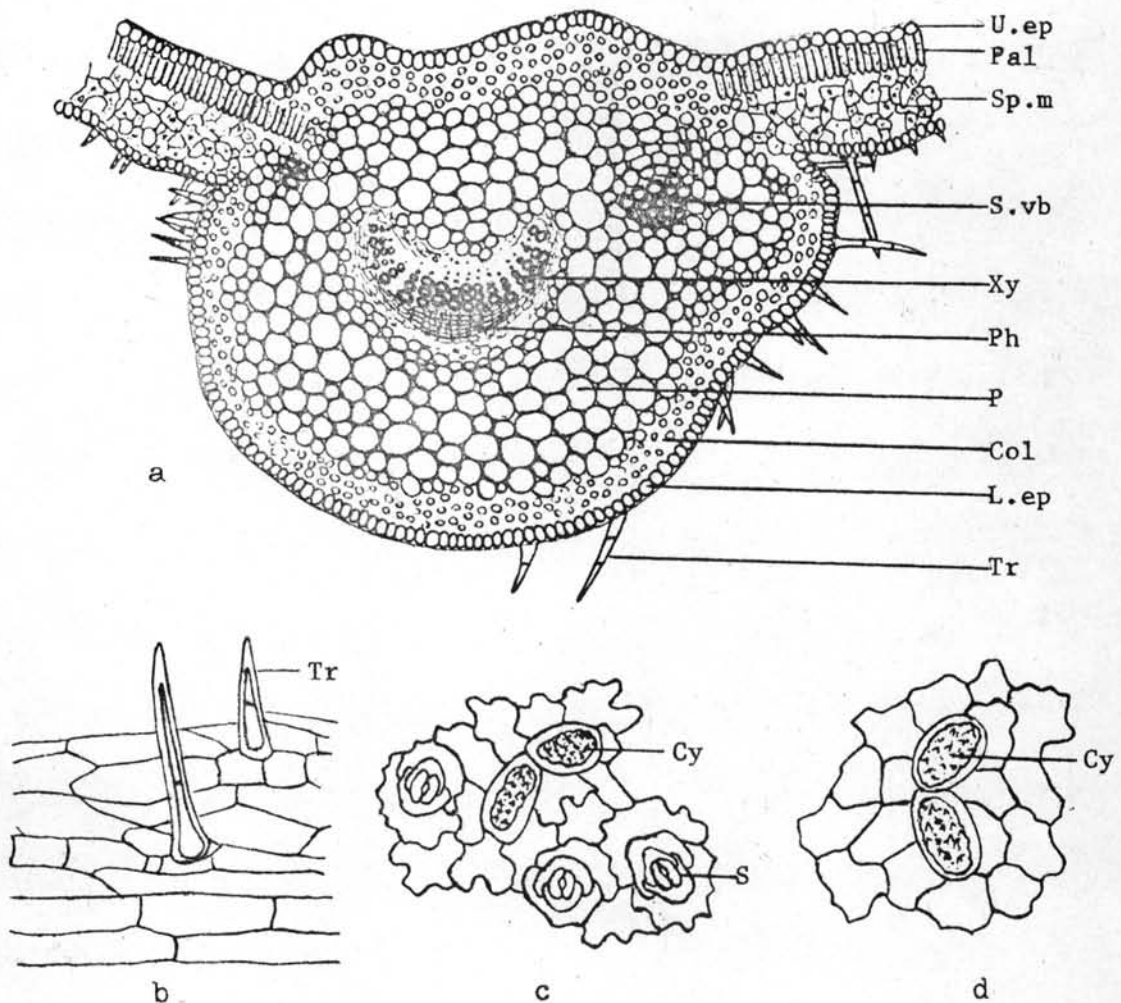


Fig. 22. *Barleria strigosa* Willd.

- a = Transverse section of the midrib of the leaf from the basal region - x 75
 b = Lower epidermis of the leaf over lateral vein in surface view - x 300
 c = Lower epidermis of the leaf in surface view - x 300
 d = Upper epidermis of the leaf in surface view - x 300.

Col = collenchyma; Cy = cystolith; L.ep = lower epidermis; P = parenchyma;
 Pal = palisade; Ph = phloem; S = stomata; Sp.m = spongy mesophyll;
 S.vb = small vascular bundle; Tr = trichome; U.ep = upper epidermis;
 Xy = xylem.

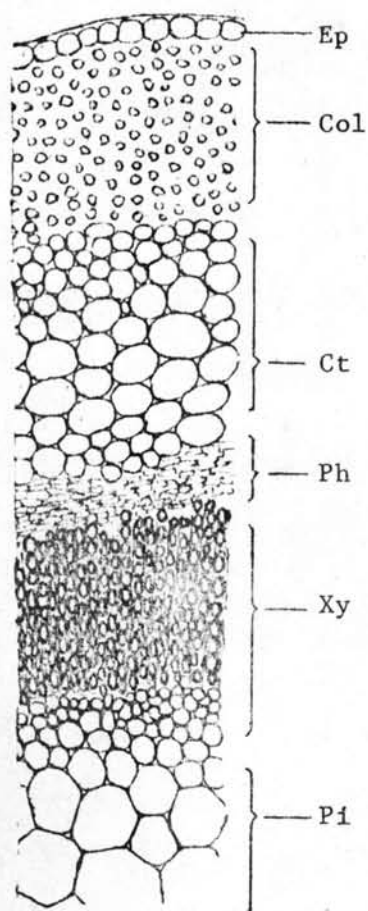


Fig. 23. *Barleria strigosa* Willd.
Transverse section of young stem -
x 100.

Col = collenchyma; Ct = cortex;
Ep = epidermis; Ph = phloem; Pi = pith;
Xy = xylem.

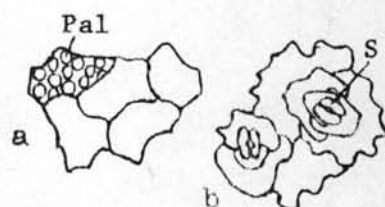
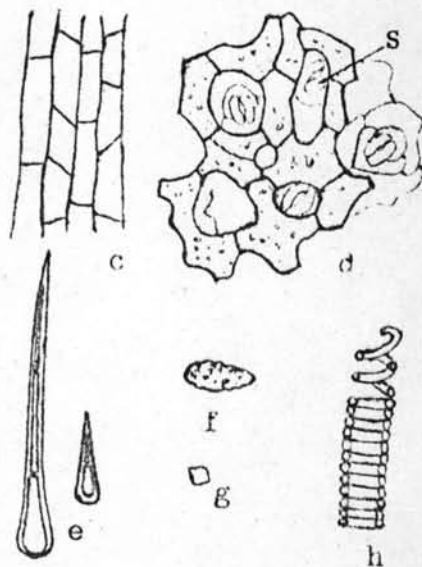


Fig. 24. *Barleria strigosa* Willd.
Elements of leaf powder - x 300.

- a = Upper epidermal cells and the
underlying palisade cells
b = Lower epidermal cells with stomata
c = Epidermis over the midrib
d = Spongy cells with the underlying
lower epidermal cells and stomata
e = Trichomes
f = Calcium carbonate crystal
g = Calcium oxalate crystal
h = Vessel element; helical.
Pal = palisade; S = stomata.



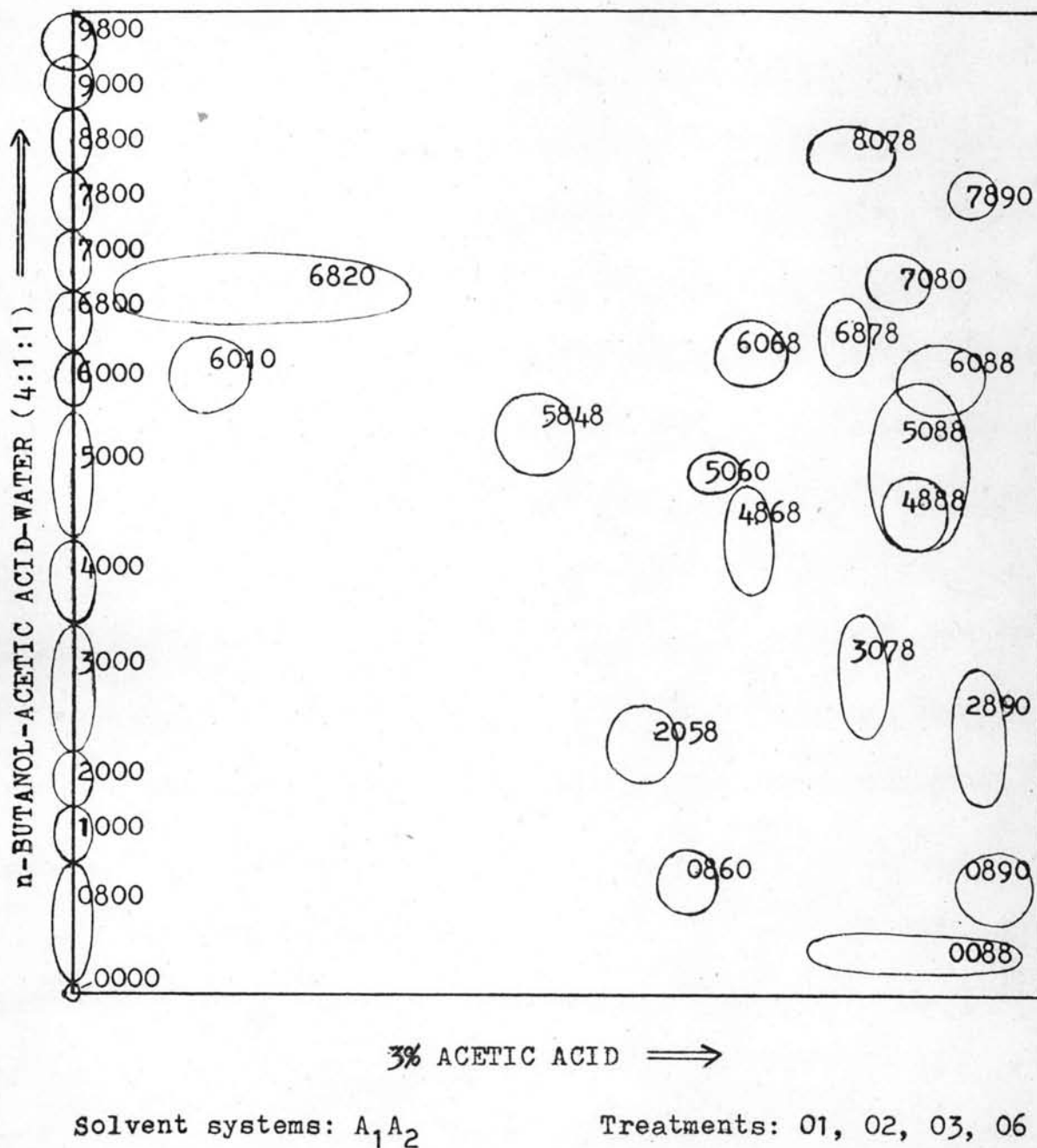
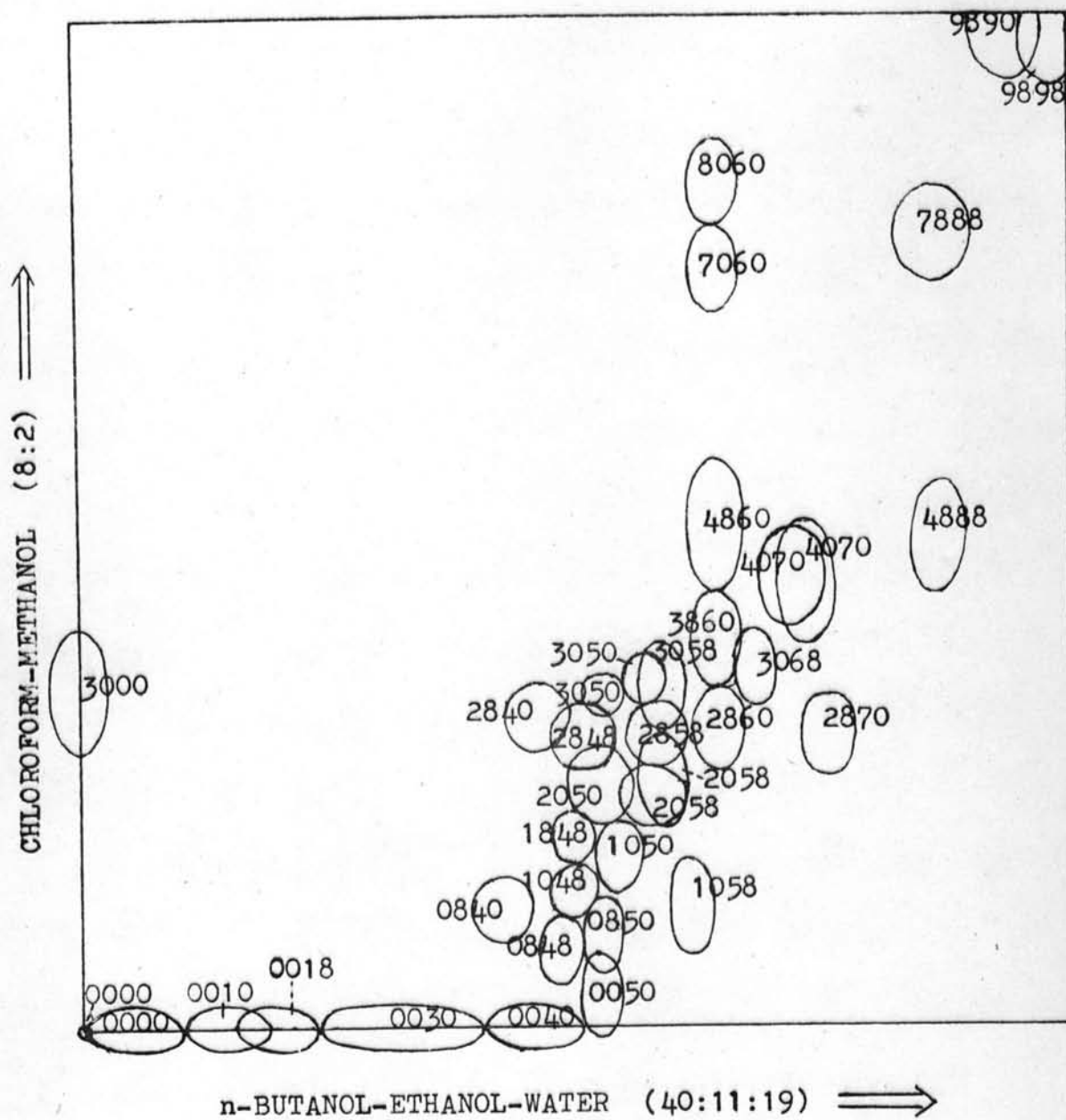


Fig. 25. Two-dimensional thin-layer chromatogram of leaf of *Barleria cristata* Linn.



Solvent systems: B₁B₂

Treatments: 01, 02, 03, 06

Fig. 26. Two-dimensional thin-layer chromatogram of leaf of *Barleria cristata* Linn.

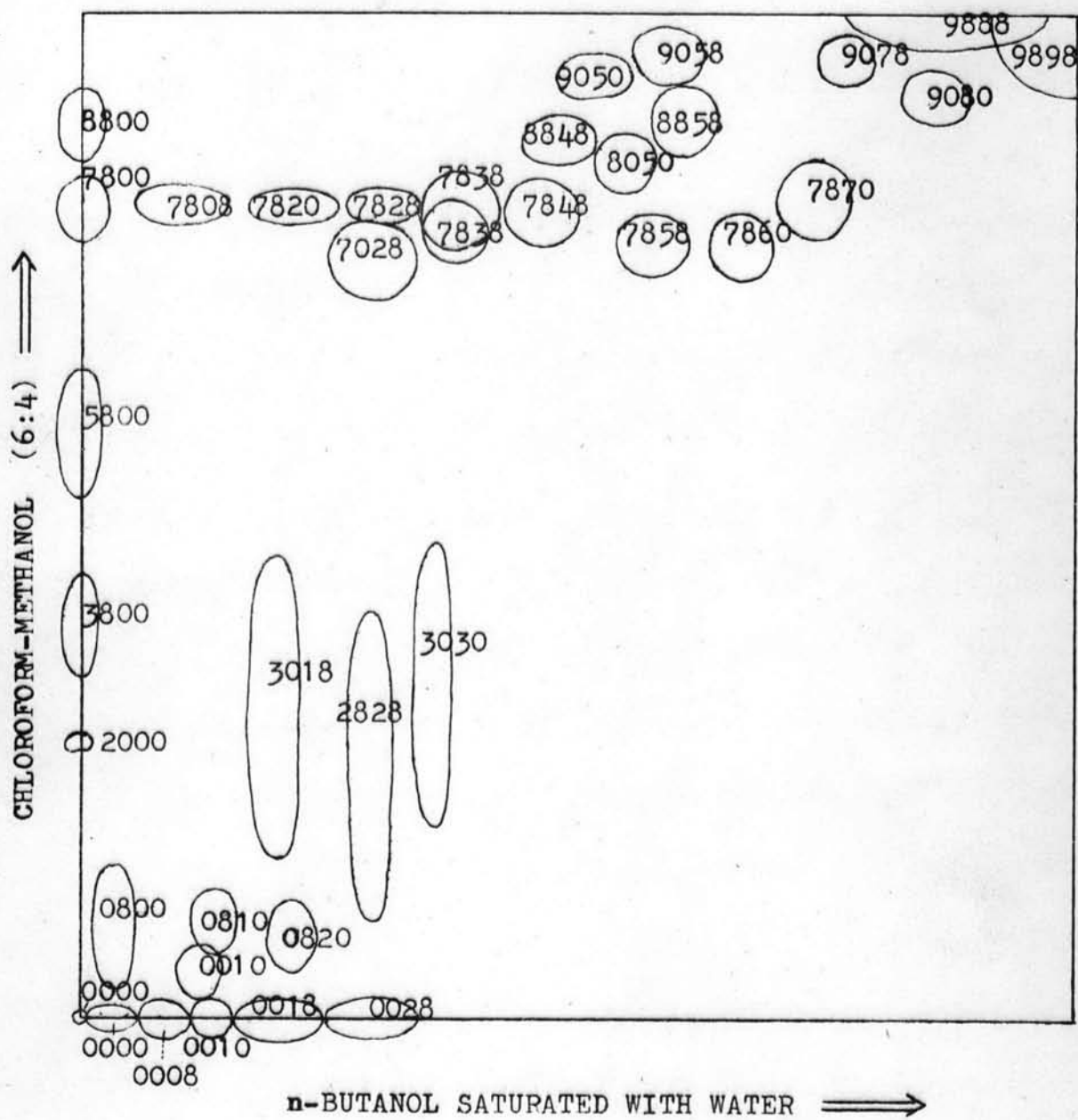
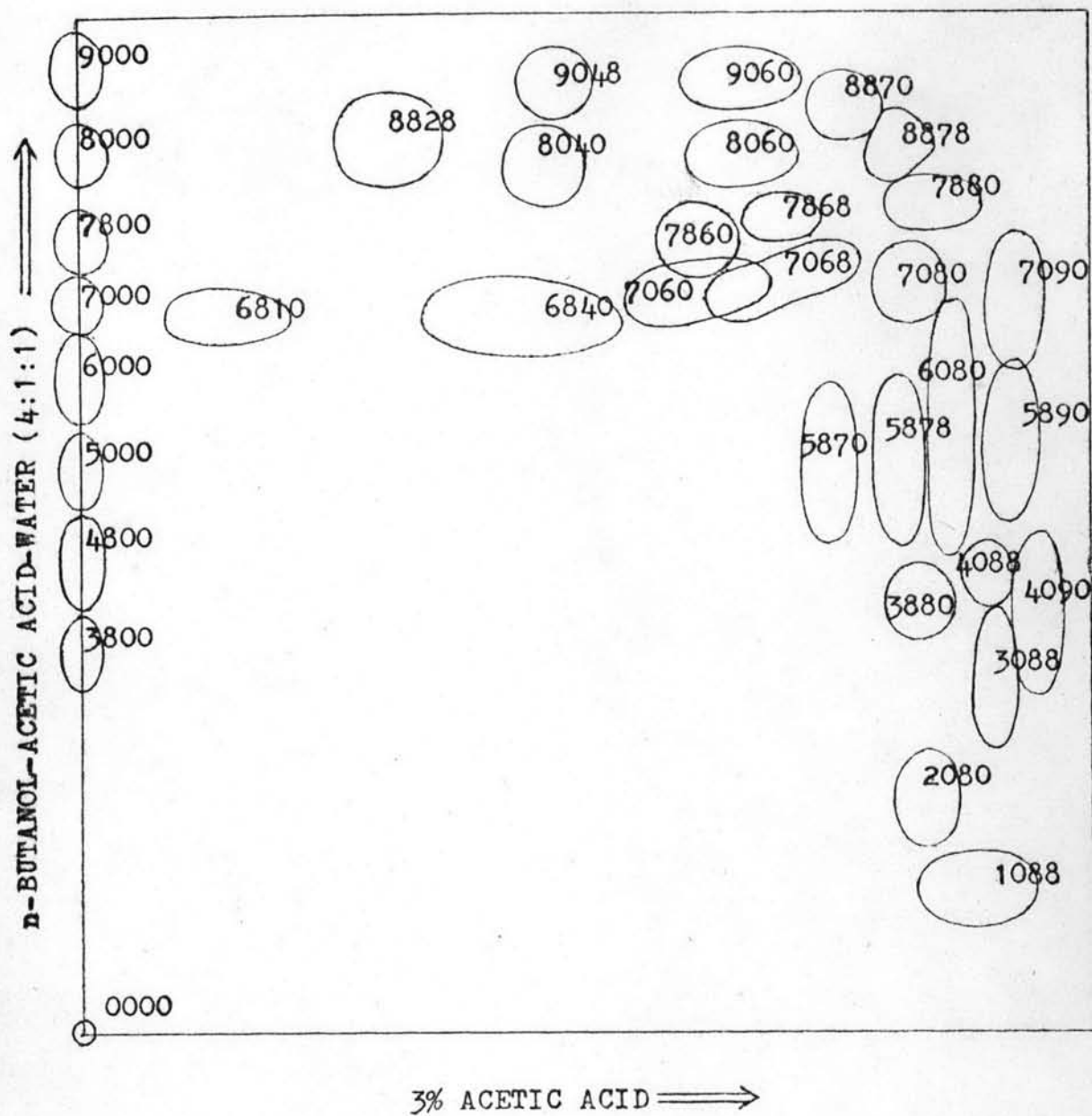


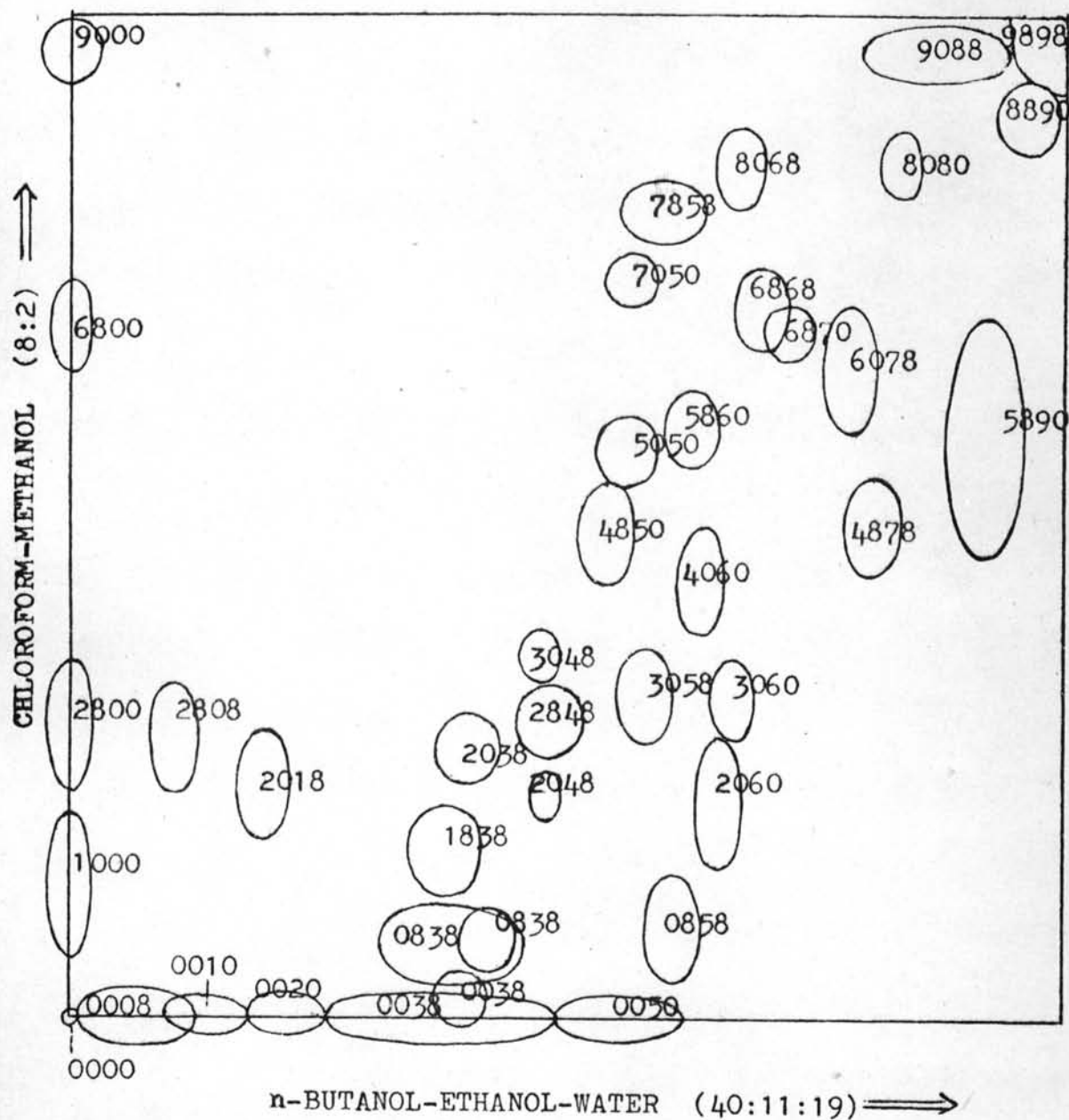
Fig. 27. Two-dimensional thin-layer chromatogram of leaf of *Barleria cristata* Linn.



Solvent systems: A_1A_2

Treatments: 01, 02, 03, 06

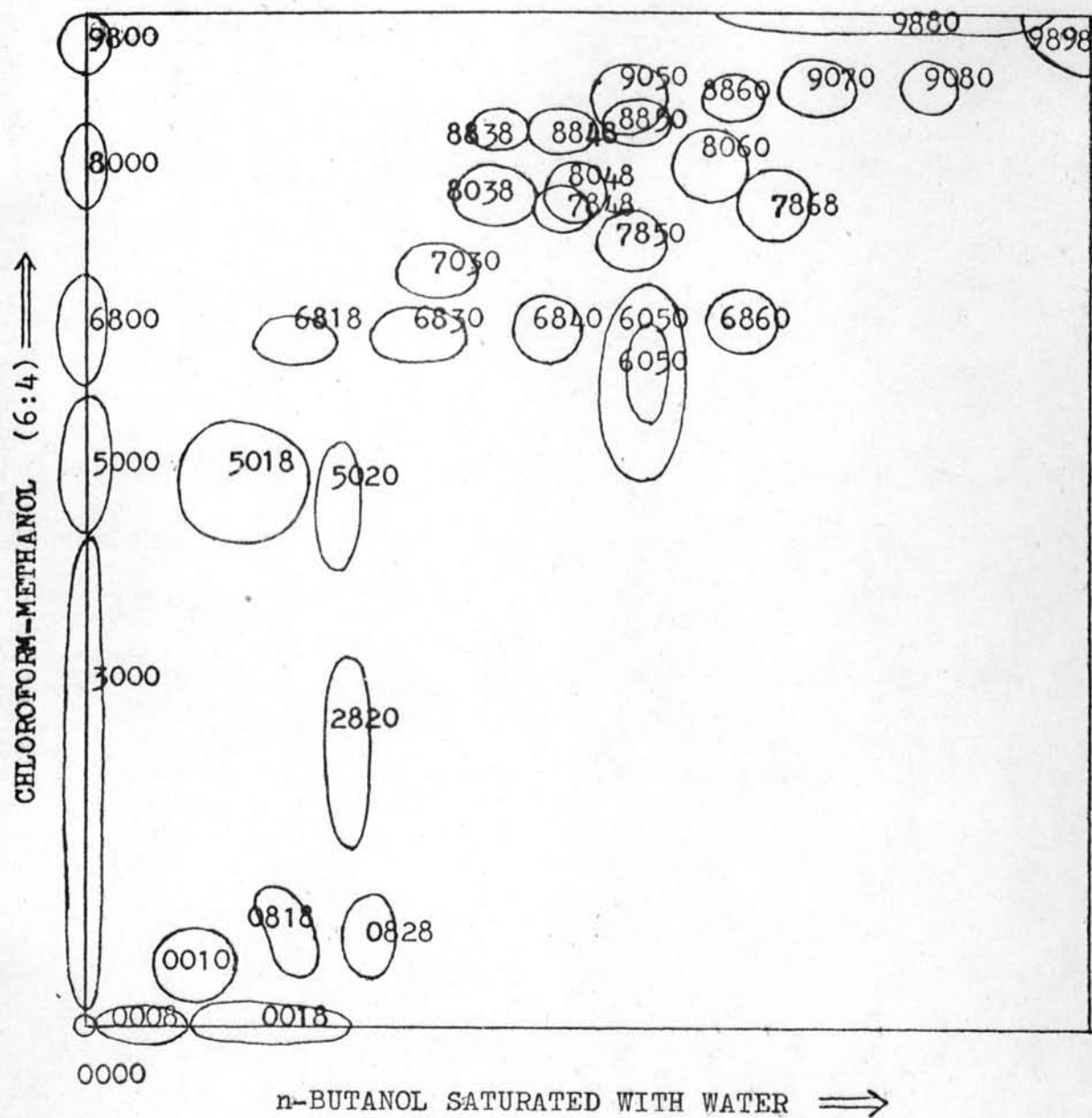
Fig. 28. Two-dimensional thin-layer chromatogram of leaf of *Barleria lupulina* Lindl.



Solvent systems: B₁B₂

Treatments: 01, 02, 03, 06

Fig. 29. Two-dimensional thin-layer chromatogram of leaf of *Barleria lupulina* Lindl.



Solvent systems: C_1C_2

Treatments: 01, 02, 03, 06

Fig. 30. Two-dimensional thin-layer chromatogram of leaf of *Barleria lupulina* Lindl.

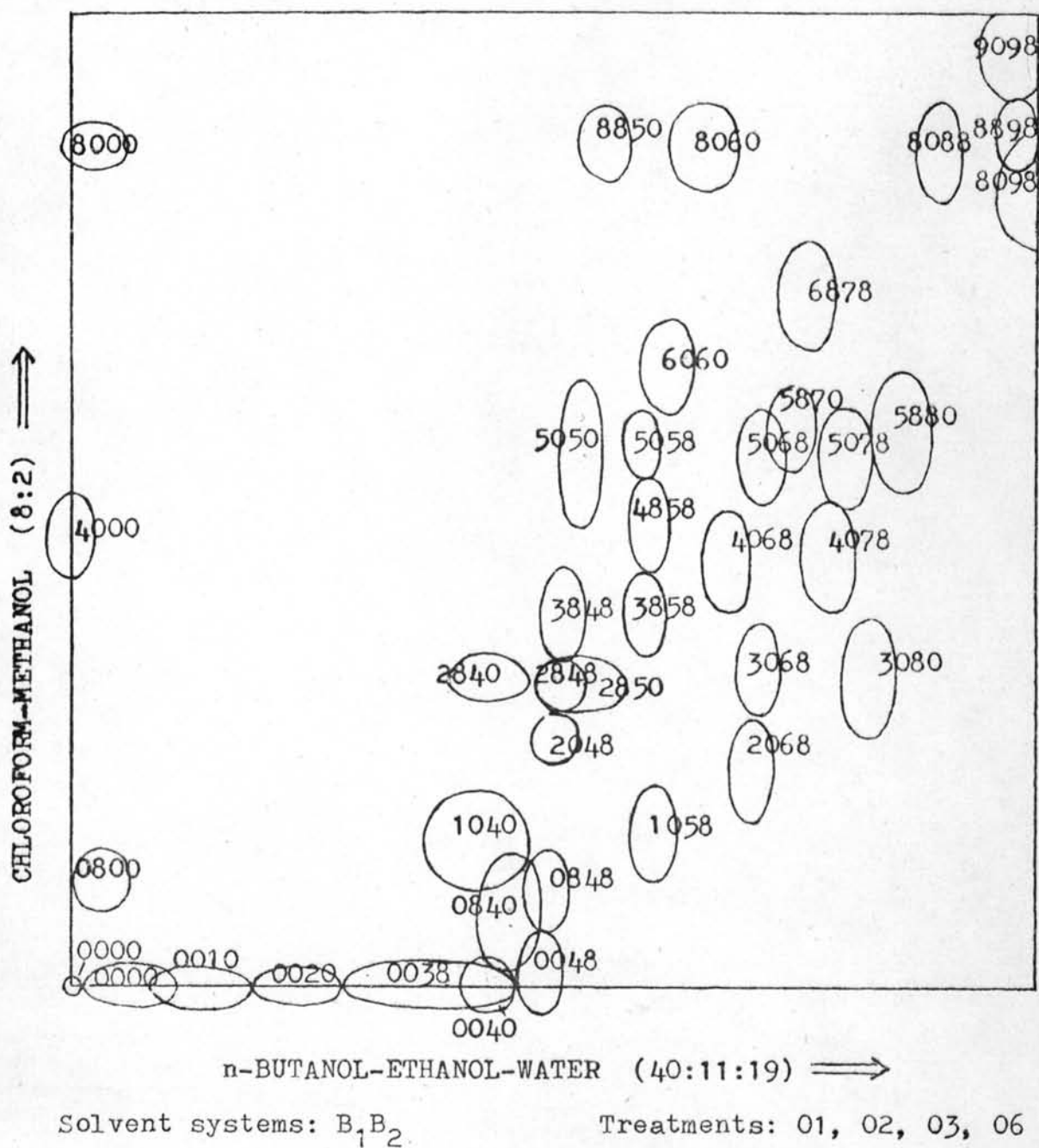


Fig. 32. Two-dimensional thin-layer chromatogram of leaf of *Barleria prionitis* Linn.

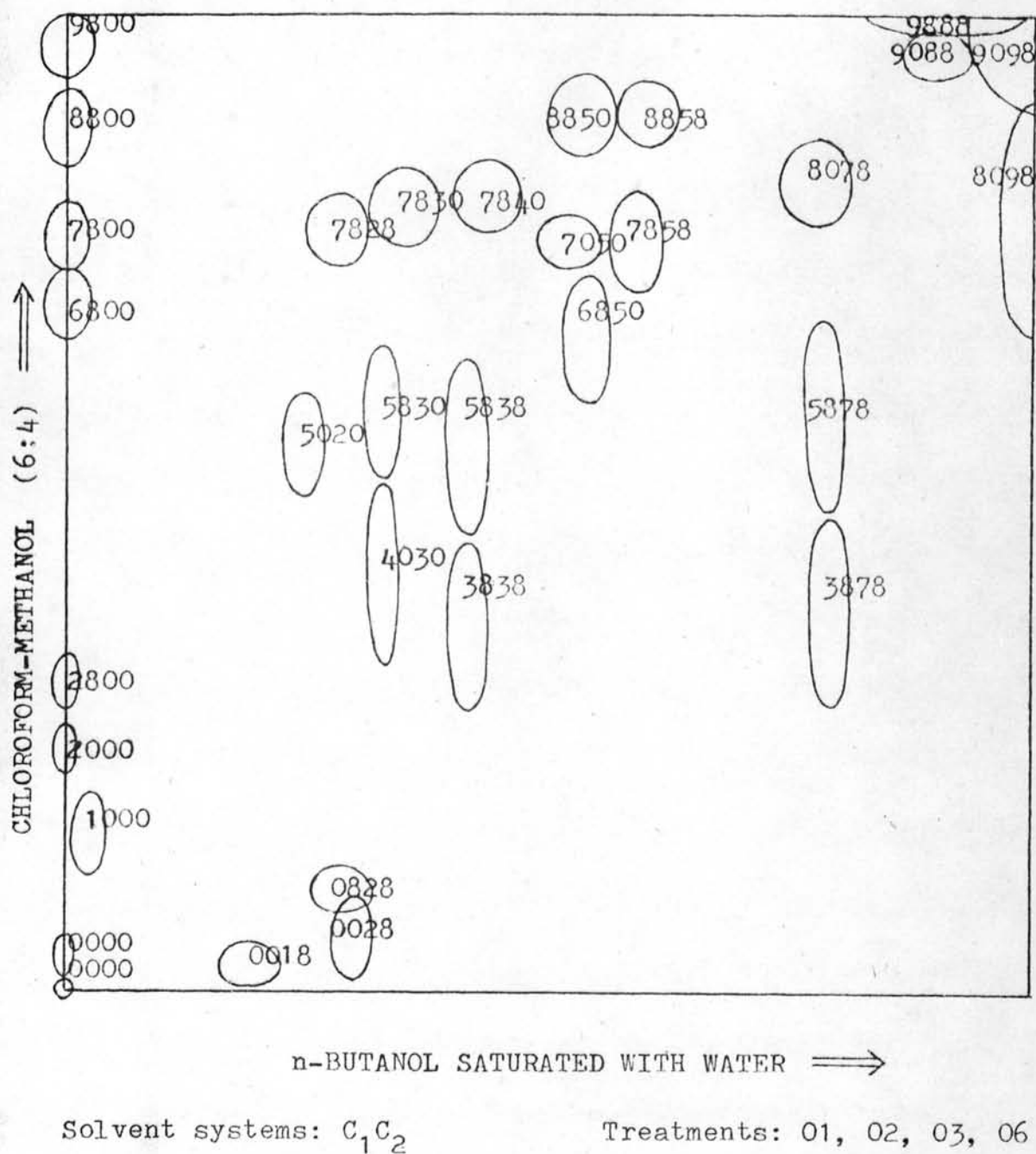
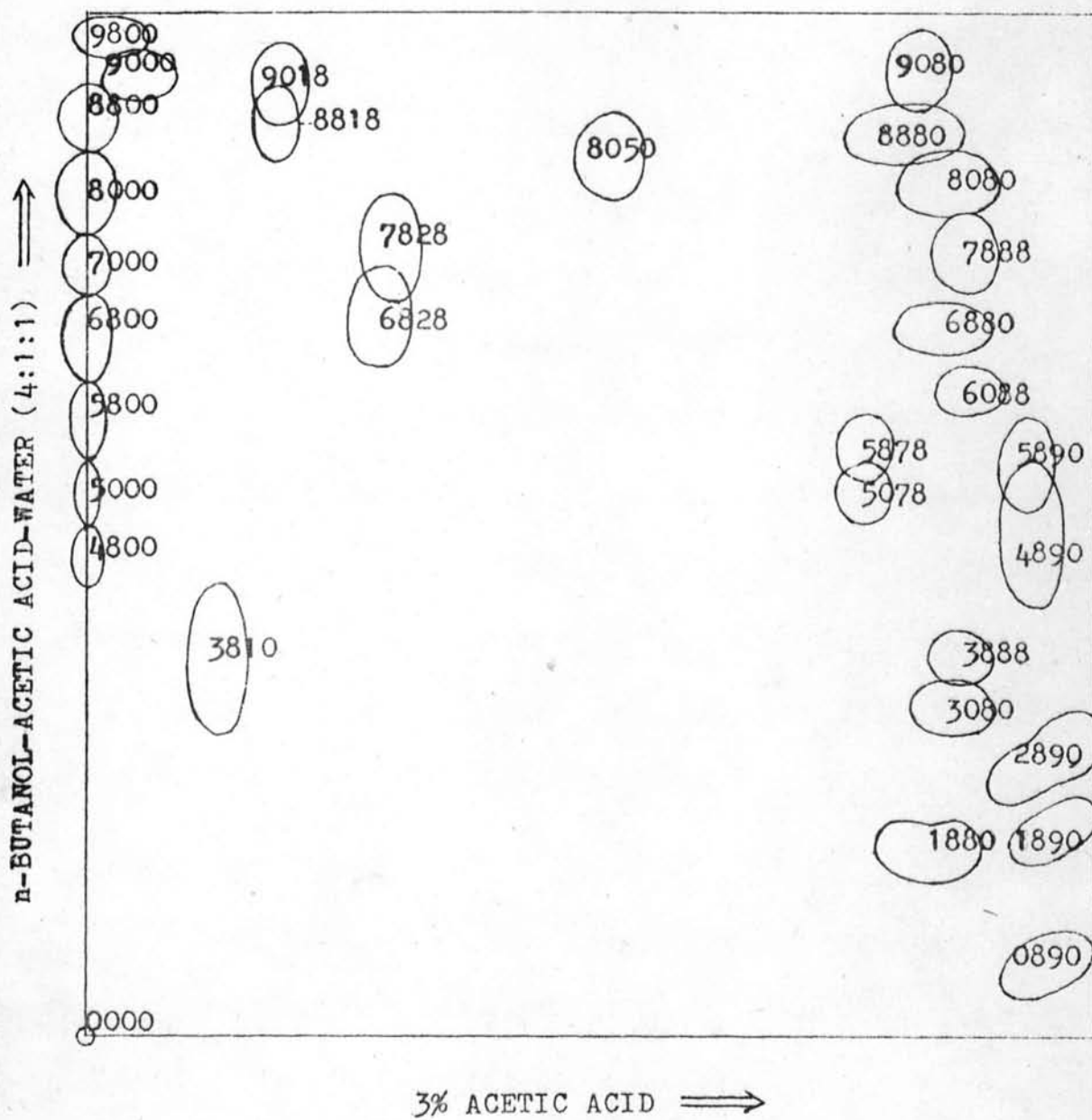


Fig. 33. Two-dimensional thin-layer chromatogram of leaf of *Barleria prionitis* Linn.



Solvent systems: A₁A₂

Treatments: 01, 02, 03, 06

Fig. 34. Two-dimensional thin-layer chromatogram of leaf of *Barleria strigosa* Willd.

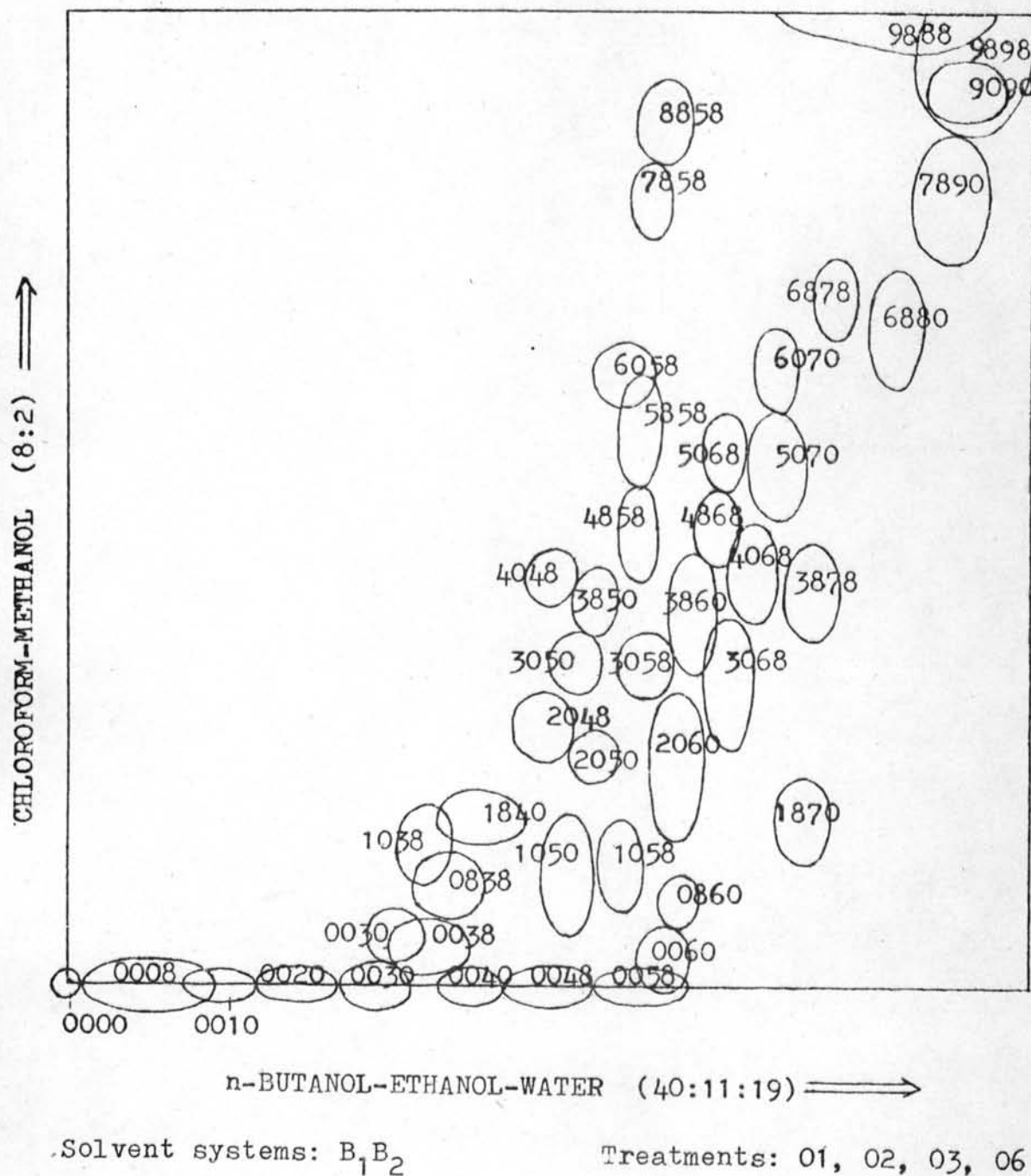
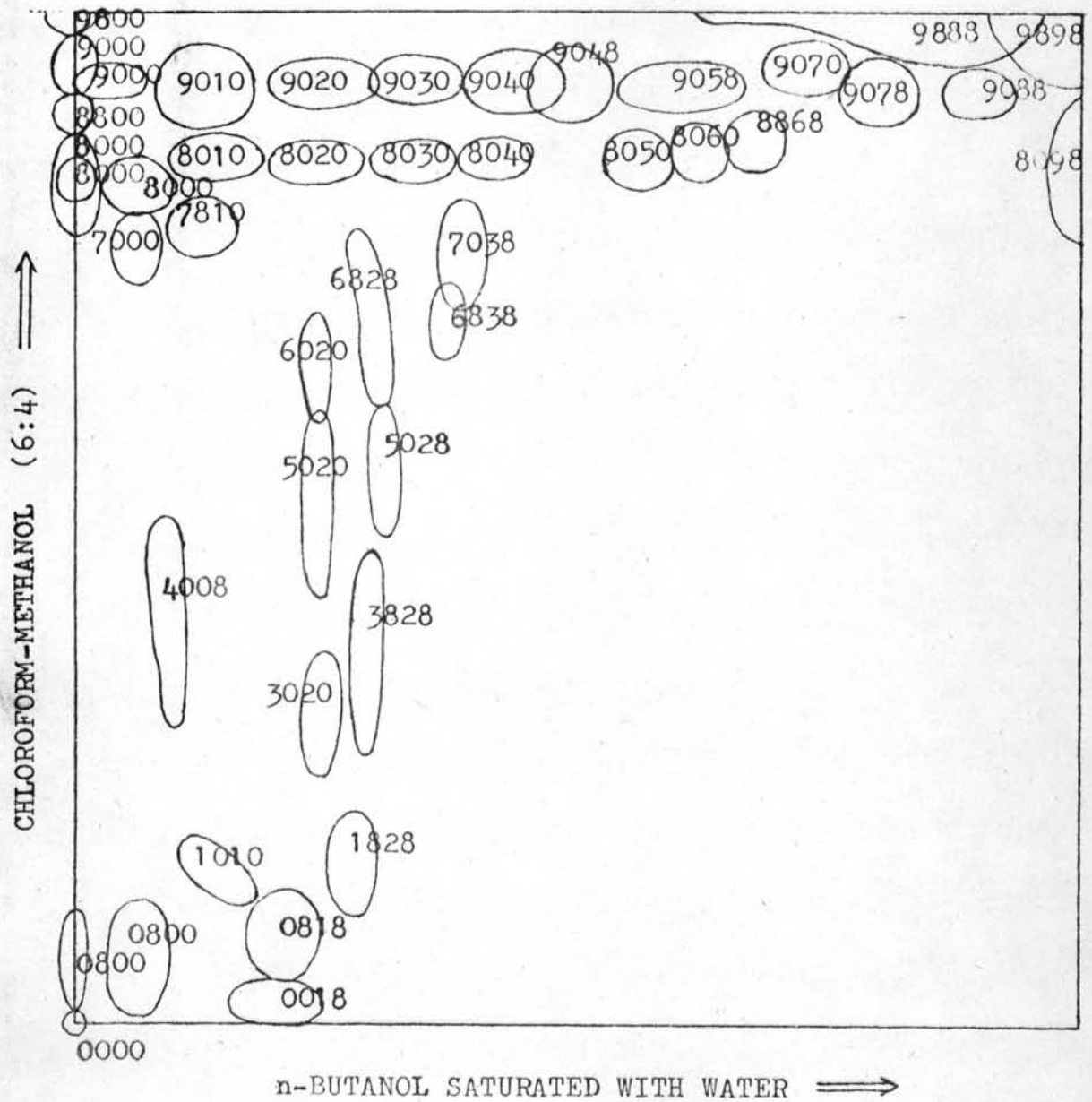


Fig. 35. Two-dimensional thin-layer chromatogram of leaf of *Barleria strigosa* Willd.



Solvent systems: C_1C_2

Treatments: 01, 02, 03, 06

Fig. 36. Two-dimensional thin-layer chromatogram of leaf of *Barleria strigosa* Willd.



Table 2.

Data on Palisade Ratio Determination of *Barleria cristata* Linn.

Number of Palisade cells to four epidermal cells	Palisade Ratio	D	D ²
63	15.75	0.71	0.5041
55	13.75	-1.29	1.6641
69	17.25	2.21	4.8841
49	12.25	-2.79	7.7841
62	15.50	0.46	0.2116
55	13.75	-1.29	1.6641
59	14.75	-0.29	0.0841
51	12.75	-2.29	5.2441
59	14.75	-0.29	0.0841
46	11.50	-3.54	12.5316
55	13.75	-1.29	1.6641
62	15.50	0.46	0.2116
48	12.00	-3.04	9.2416
63	15.75	0.71	0.5041
74	18.50	3.46	11.9716
72	18.00	2.96	8.7616
69	17.25	2.21	4.8841
71	17.75	2.71	7.3441
63	15.75	0.71	0.5041
50	12.50	-2.54	6.4516
62	15.50	0.46	0.2116
64	16.00	0.96	0.9216
47	11.75	-3.29	10.8241
56	14.00	-1.04	1.0816
74	18.50	3.46	11.9716
50	12.50	-2.54	6.4516
69	17.25	2.21	4.8841
59	14.75	-0.29	0.0841
68	17.00	1.96	3.8416
61	15.25	0.21	0.0441

Mean of Palisade Ratio = 15.04

Standard deviation = 2.053

D = Deviation from mean.

Table 3.

Stomatal Number and Stomatal Index Determinations of
Barleria cristata Linn.

Number of Stomata	Number of Epidermal Cells	Stomatal Number (Sn)	Stomatal Index (SI)	D (SI)	D ² (SI)
12	22	413.79	35.29	6.35	40.3225
8	31	275.86	20.51	-8.43	71.0649
14	33	482.76	29.79	0.85	0.7225
14	33	482.76	29.79	0.85	0.7225
14	31	482.76	31.11	2.17	4.7089
13	29	448.28	30.95	2.01	4.0401
12	27	413.79	30.77	1.83	3.3489
14	30	482.76	31.82	2.88	8.2944
10	28	344.83	26.32	-2.62	6.8644
10	26	344.83	27.78	-1.16	1.3456
15	32	517.24	31.91	2.97	8.8209
18	45	620.69	28.57	-0.37	0.1369
12	32	413.79	27.27	-1.67	2.7889
12	30	413.79	28.57	-0.37	0.3169
17	37	586.21	31.48	2.54	6.4516
11	32	379.31	25.58	-3.36	11.2896
16	39	551.72	29.09	0.15	0.0225
14	33	482.76	29.79	0.85	0.7225
15	33	517.24	31.25	2.31	5.3361
10	24	344.83	29.41	0.47	0.2209
11	24	379.31	31.23	2.29	5.2441
14	31	482.76	31.11	2.17	4.7089
11	35	379.31	23.91	-5.03	25.3009
13	30	448.28	30.23	1.29	1.6641
12	34	413.79	26.09	-2.85	8.1225
16	41	551.72	28.07	-0.87	0.7569
12	28	413.79	30.00	1.06	1.1236
10	19	344.83	34.48	5.54	30.6916
11	36	379.31	23.40	-5.54	30.6916
7	24	241.38	22.58	-6.36	40.4496

Area of Determination = 0.029 mm²

Mean of Stomatal Number (lower epidermis) = 434.48

Mean of Stomatal Index (lower epidermis) = 28.94

Standard deviation of the stomatal Index = 3.297

D = Deviation from mean.

Table 4.

Vein-Islet Number Determination of *Barleria cristata* Linn.

Number of Vein-Islets to 4 mm ²	Vein-Islet Number	D	D ²
36	9.00	-3.18	10.1124
48	12.00	-0.18	0.0324
61	15.25	3.07	9.4249
42	10.50	-1.68	2.8224
60	15.00	2.82	7.9524
62	15.50	3.32	11.0224
39	9.75	-2.43	5.9049
51	12.75	0.57	0.3249
33	8.25	-3.93	15.4449
43	10.75	-1.43	2.0449
53	13.25	1.07	1.1449
57	14.25	2.07	4.2849
47	11.75	-0.43	0.1849
33	8.25	-3.93	15.4449
46	11.50	-0.68	0.4624
43	10.75	-1.43	2.0449
52	13.00	0.82	0.6724
41	10.25	-1.93	3.7249
28	7.00	-5.18	26.8324
45	11.25	-0.93	0.8649
62	15.50	3.32	11.0224
52	13.00	0.82	0.6724
66	16.50	4.32	18.6624
71	17.75	5.57	31.0249
42	10.50	-1.68	2.8224
63	15.75	3.57	12.7449
64	16.00	3.82	14.5924
43	10.75	-1.43	2.0449
42	10.50	-1.68	2.8224
36	9.00	-3.18	10.1124

Mean of Vein-Islet Number = 12.18

Standard deviation = 2.752

D = Deviation from mean.

Table 5.

Veinlet Termination Number Determination of *Barleria cristata* Linn.

Number of Veinlet Terminations to 4 mm ²	Veinlet Termination Number	D	D ²
23	5.75	1.37	1.8769
11	2.75	-1.63	2.6569
29	7.25	2.87	8.2369
11	2.75	-1.63	2.6569
23	5.75	1.37	1.8769
24	6.00	1.62	2.6244
11	2.75	-1.63	2.6569
18	4.50	0.12	0.0144
13	3.25	-1.13	1.2769
15	3.75	-0.63	0.3969
23	5.75	1.37	1.8769
17	4.25	-0.13	0.0169
15	3.75	-0.63	0.3969
17	4.25	-0.13	0.0169
14	3.50	-0.88	0.7744
14	3.50	-0.88	0.7744
18	4.50	0.12	0.0144
14	3.50	-0.88	0.7744
16	4.00	-0.38	0.1444
15	3.75	-0.63	0.3969
17	4.25	-0.13	0.0169
17	4.25	-0.13	0.0169
21	5.25	0.87	0.7569
11	2.75	-1.63	2.6569
11	2.75	-1.63	2.6569
32	8.00	3.62	13.1044
24	6.00	1.62	2.6244
15	3.75	-0.63	0.3969
18	4.50	0.12	0.0144
19	4.75	0.37	0.1369

Mean of Veinlet Termination Number = 4.38

Standard deviation = 1.315

D = Deviation from mean.

Table 6.

Data on Palisade Ratio Determination of *Barleria lupulina* Lindl.

Number of Palisade cells to four epidermal cells	Palisade Ratio	D	D ²
19	4.75	-0.07	0.0049
20	5.00	0.18	0.0324
17	4.25	-0.57	0.3249
17	4.25	-0.57	0.3249
21	5.25	0.43	0.1849
19	4.75	-0.07	0.0049
22	5.50	0.68	0.4624
17	4.25	-0.57	0.3249
23	5.75	0.93	0.8649
20	5.00	0.18	0.0324
18	4.50	-0.32	0.1024
21	5.25	0.43	0.1849
18	4.50	-0.32	0.1024
18	4.50	-0.32	0.1024
18	4.50	-0.32	0.1024
19	4.75	-0.07	0.0049
18	4.50	-0.32	0.1024
18	4.50	-0.32	0.1024
18	4.50	-0.32	0.1024
21	5.25	0.43	0.1849
19	4.75	-0.07	0.0049
19	4.75	-0.07	0.0049
18	4.50	-0.32	0.1024
20	5.00	0.18	0.0324
18	4.50	-0.32	0.1024
20	5.00	0.18	0.0324
19	4.75	-0.07	0.0049
20	5.00	0.18	0.0324
19	4.75	-0.07	0.0049
21	5.25	0.43	0.1849
22	5.50	0.68	0.4624

Mean of Palisade Ratio = 4.82

Standard deviation = 0.388

D = Deviation from mean.

Table 7.

Stomatal Number and Stomatal Index Determinations of
Barleria lupulina Lindl.

Number of Stomata	Number of Epidermal Cells	Stomatal Number (Sn)	Stomatal Index (SI)	D _(SI)	D _(SI) ²
7	33	241.38	17.50	-5.94	38.2836
9	32	310.34	21.95	1.49	2.2201
8	38	275.86	17.39	-6.05	36.6025
10	42	344.83	19.23	-4.21	17.7241
9	29	310.34	23.68	0.24	0.0576
10	32	344.83	23.81	0.37	0.1369
10	33	344.83	23.26	-0.18	0.0324
10	39	344.83	20.41	-3.03	9.1809
11	33	379.31	25.00	1.56	2.4336
11	33	379.31	25.00	1.56	2.4336
10	34	344.83	22.73	-0.71	0.5041
11	37	379.31	22.92	-0.52	0.2704
11	41	379.31	21.15	-2.29	5.2441
12	41	413.79	22.64	-0.80	0.6400
11	38	379.31	22.45	-0.99	0.9801
12	32	413.79	27.27	3.83	14.6689
11	37	379.31	22.92	-0.52	0.2704
11	31	379.31	26.19	2.75	7.5625
12	35	413.79	25.53	2.09	4.3681
12	39	413.79	23.53	0.09	0.0081
12	35	413.79	25.53	2.09	4.3681
12	39	413.79	23.53	0.09	0.0081
13	37	448.28	26.00	2.56	6.5536
14	34	482.76	29.17	5.73	32.8329
13	43	448.28	23.21	-0.23	0.0529
14	39	482.76	26.42	2.98	8.8804
13	43	448.28	23.21	-0.23	0.0529
12	40	413.79	23.08	-0.36	0.1296
14	43	482.76	24.56	1.12	1.2544
12	38	413.79	24.00	0.56	0.3136

Area of Determination = 0.029 mm²

Mean of Stomatal Number (lower epidermis) = 387.36

Mean of Stomatal Index (lower epidermis) = 23.44

Standard deviation of the Stomatal Index = 2.550

D = Deviation from mean.

Table 8.

Vein-Islet Number Determination of *Barleria lupulina* Lindl.

Number of Vein-Islets to 4 mm ²	Vein-Islet Number	D	D ²
16	4.00	-0.27	0.0729
15	3.75	-0.52	0.2704
14	3.50	-0.77	0.5929
18	4.50	0.23	0.0529
17	4.25	-0.02	0.0004
19	4.75	0.48	0.2304
18	4.50	0.23	0.0529
14	3.50	-0.77	0.5929
19	4.75	0.48	0.2304
14	3.50	-0.77	0.5929
14	3.50	-0.77	0.5929
15	3.75	-0.52	0.2704
19	4.75	0.48	0.2304
17	4.25	-0.02	0.0004
15	3.75	-0.52	0.2704
19	4.75	0.48	0.2304
18	4.50	0.23	0.0529
16	4.00	-0.27	0.0729
18	4.50	0.23	0.0529
19	4.75	0.48	0.2304
17	4.25	-0.02	0.0004
18	4.50	0.23	0.0529
16	4.00	-0.27	0.0729
18	4.50	0.23	0.0529
19	4.75	0.48	0.2304
19	4.75	0.48	0.2304
17	4.25	-0.02	0.0004
19	4.75	0.48	0.2304
17	4.25	-0.02	0.0004
18	4.50	0.23	0.0529

Mean of Vein-Islet Number = 4.27

Standard deviation = 0.433

D = Deviation from mean.

Table 9.

Veinlet Termination Number Determination of *Barleria lupulina* Lindl.

Number of Veinlet Terminations to 4 mm ²	Veinlet Termination Number	D	D ²
14	3.50	-0.42	0.1764
19	4.75	0.83	0.6889
14	3.50	-0.42	0.1764
14	3.50	-0.42	0.1764
14	3.50	-0.42	0.1764
16	4.00	0.08	0.0064
16	4.00	0.08	0.0064
13	3.25	-0.67	0.4489
18	4.50	0.58	0.3364
16	4.00	0.08	0.0064
17	4.25	0.33	0.1089
17	4.25	0.33	0.1089
17	4.25	0.33	0.1089
14	3.50	-0.42	0.1764
14	3.50	-0.42	0.1764
18	4.50	0.58	0.3364
14	3.50	-0.42	0.1764
15	3.75	-0.17	0.0289
14	3.50	-0.42	0.1764
16	4.00	0.08	0.0064
14	3.50	-0.42	0.1764
16	4.00	0.08	0.0064
15	3.75	-0.17	0.0289
17	4.25	0.33	0.1089
18	4.50	0.58	0.3364
17	4.25	0.33	0.1089
15	3.75	-0.17	0.0289
17	4.25	0.33	0.1089
16	4.00	0.08	0.0064
16	4.00	0.08	0.0064

Mean of Veinlet Termination Number = 3.92

Standard deviation = 0.388

D = Deviation from mean.

Table 10.

Data on Palisade Ratio Determination of *Barleria prionitis* Linn.

Number of Palisade cells to four epidermal cells	Palisade Ratio	D	D ²
38	9.50	0.68	0.4624
41	10.25	1.43	2.0449
36	9.00	0.18	0.0324
35	8.75	-0.07	0.0049
36	9.00	0.18	0.0324
35	8.75	-0.07	0.0049
38	9.50	0.68	0.4624
41	10.25	1.43	2.0449
38	9.50	0.68	0.4624
39	9.75	0.93	0.8649
34	8.50	-0.32	0.1024
40	10.00	1.18	1.3924
29	7.25	-1.57	2.4649
36	9.00	0.18	0.0324
35	8.75	-0.07	0.0049
34	8.50	-0.32	0.1024
40	10.00	1.18	1.3924
38	9.50	0.68	0.4624
36	9.00	0.18	0.0324
34	8.50	-0.32	0.1024
33	8.25	-0.57	0.3249
32	8.00	-0.82	0.6724
32	8.00	-0.82	0.6724
34	8.50	-0.32	0.1024
39	9.75	0.93	0.8649
26	6.50	-2.32	5.3824
41	10.25	1.43	2.0449
32	8.00	-0.82	0.6724
33	8.25	-0.57	0.3249
23	5.75	-3.07	9.4249

Mean of Palisade Ratio = 8.82

Standard deviation = 1.049

D = Deviation from mean.

Table 11.

Stomatal Number and Stomatal Index Determinations of
Barleria prionitis Linn.

Number of Stomata	Number of Epidermal Cells	Stomatal Number (Sn)	Stomatal Index (SI)	D (SI)	D ² (SI)
10	49	344.83	16.95	-4.66	21.7156
13	58	448.28	18.31	-3.30	10.8900
14	40	482.76	25.93	4.32	18.6624
11	46	379.31	19.30	-2.31	5.3361
12	51	413.79	19.05	-2.56	6.5531
14	35	482.76	28.57	6.96	48.4416
14	41	482.76	25.45	3.84	14.7456
16	39	551.72	29.09	7.48	55.9504
13	44	448.28	22.81	1.20	1.4400
15	40	517.24	27.27	5.66	32.0356
19	61	655.17	23.75	2.14	4.5796
9	45	310.34	16.67	-4.94	24.4036
9	32	310.34	21.95	0.34	0.1156
9	39	310.34	18.75	-2.86	8.1796
10	48	344.83	17.24	-4.37	19.0969
10	42	344.83	19.23	-2.38	5.6644
13	40	448.28	24.53	2.92	8.5264
12	38	413.79	24.00	2.39	5.7121
8	44	275.86	15.38	-6.23	38.8129
12	45	413.79	21.05	-0.56	0.3136
9	38	310.34	19.15	-2.46	6.0516
13	35	448.28	27.08	5.47	29.9209
14	49	482.76	22.22	0.61	0.3721
9	37	310.34	19.57	-2.04	4.1616
17	37	586.21	31.48	9.87	97.4169
12	48	413.79	20.00	-1.61	2.5921
7	38	241.38	15.56	-6.05	36.6025
14	55	482.76	20.29	-1.32	1.7424
12	51	413.79	19.05	-2.56	6.5536
9	39	310.34	18.75	-2.86	8.1796

Area of Determination = 0.029 mm²

Mean of Stomatal Number (lower epidermis) = 412.64

Mean of Stomatal Index (lower epidermis) = 21.61

Standard deviation of the Stomatal Index = 4.182

D = Deviation from mean.

Table 12.

Vein-Islet Number Determination of *Barleria prionitis* Linn.

Number of Vein-Islets to 4 mm ²	Vein-Islet Number	D	D ²
19	4.75	-0.69	0.4761
30	7.50	2.06	4.2436
23	5.75	0.31	0.0961
12	3.00	-2.44	5.9536
33	8.25	2.81	7.8961
22	5.50	0.06	0.0036
31	7.75	2.31	5.3361
28	7.00	1.56	2.4336
22	5.50	0.06	0.0036
15	3.75	-1.69	2.8561
23	5.75	0.31	0.0961
33	8.25	2.81	7.8961
25	6.25	0.81	0.6561
26	6.50	1.06	1.1236
12	3.00	-2.44	5.9536
11	2.75	-2.69	7.2361
12	3.00	-2.44	5.9536
27	6.75	1.31	1.7161
14	3.50	-1.94	3.7636
13	3.25	-2.19	4.7961
15	3.75	-1.69	2.8561
34	8.50	3.06	9.3636
25	6.25	0.81	0.6561
28	7.00	1.56	2.4336
30	7.50	2.06	4.2436
12	3.00	-2.44	5.9536
15	3.75	-1.69	2.8561
24	6.00	0.56	0.3136
19	4.75	-0.69	0.4761
20	5.00	-0.44	0.1936

Mean of Vein-Islet Number = 5.44

Standard deviation = 1.806

D = Deviation from mean.

Table 13.

Veinlet Termination Number Determination of *Barleria prionitis* Linn.

Number of Veinlet Terminations to 4 mm ²	Veinlet Termination Number	D	D ²
24	6.00	0.47	0.2209
28	7.00	1.47	2.1609
24	6.00	0.47	0.2209
19	4.75	-0.78	0.6084
20	5.00	-0.53	0.2809
28	7.00	1.47	2.1609
36	9.00	3.47	12.0409
34	8.50	2.97	8.8209
29	7.25	1.72	2.9584
18	4.50	-1.03	1.0609
23	5.75	0.22	0.0484
24	6.00	0.47	0.2209
27	6.75	1.22	1.4884
26	6.50	0.97	0.9409
12	3.00	-2.53	6.4009
14	3.50	-2.03	4.1209
17	4.25	-1.28	1.6384
18	4.50	-1.03	1.0609
13	3.25	-2.28	5.1984
14	3.50	-2.03	4.1209
16	4.00	-1.53	2.3409
29	7.25	1.72	2.9584
30	7.50	1.97	3.8809
23	5.75	0.22	0.0484
21	5.25	-0.28	0.0784
12	3.00	-2.53	6.4009
10	2.50	-3.03	9.1809
17	4.25	-1.28	1.6384
25	6.25	0.72	0.5184
33	8.25	2.72	7.3984

Mean of Veinlet Termination Number = 5.53

Standard deviation = 1.734

D = Deviation from mean.

Table 14.

Data on Palisade Ratio Determination of *Barleria strigosa* Willd.

Number of Palisade cells to four epidermal cells	Palisade Ratio	D	D ²
37	9.25	-1.89	3.5721
45	11.25	0.11	0.0121
43	10.75	-0.39	0.1521
39	9.75	-1.39	1.9321
42	10.50	-0.64	0.4096
50	12.50	1.36	1.8496
47	11.75	0.61	0.3721
34	8.50	-2.64	6.9696
37	9.25	-1.89	3.5721
50	12.50	1.36	1.8496
44	11.00	-0.14	0.0196
33	7.75	-3.39	11.4921
38	9.50	-1.64	2.6896
36	9.00	-2.14	4.5796
41	10.25	-0.89	0.7921
52	13.00	1.86	3.4596
35	8.75	-2.39	5.7121
41	10.25	-0.89	0.7921
51	12.75	1.61	2.5921
55	13.75	2.61	6.8121
42	10.50	-0.64	0.4096
57	14.25	3.11	9.6721
36	9.00	-2.14	4.5796
43	10.75	-0.39	0.1521
52	13.00	1.86	3.4596
55	13.75	2.61	6.8121
55	13.75	2.61	6.8121
56	14.00	2.86	8.1796
49	12.25	1.11	1.2321
44	11.00	-0.14	0.0196

Mean of Palisade Ratio = 11.14

Standard deviation = 1.834

D = Deviation from mean.

Table 15.

Stomatal Number and Stomatal Index Determinations of
Barleria strigosa Willd.

Number of Stomata	Number of Epidermal Cells	Stomatal Number (Sn)	Stomatal Index (SI)	D (SI)	D ² (SI)
11	42	379.31	20.75	-3.77	14.2129
12	38	413.79	24.00	-0.52	0.2704
14	36	482.76	28.00	3.48	12.1104
14	43	482.76	24.56	0.04	0.0016
13	42	488.28	23.64	-0.88	0.7744
14	42	482.76	25.00	0.48	0.2304
12	42	413.79	22.22	-2.30	5.2900
17	38	586.21	30.91	6.39	40.8321
11	48	379.31	18.64	-5.88	34.5744
18	38	620.69	32.14	7.62	58.0644
16	45	551.72	26.23	1.71	2.9241
14	34	482.76	29.17	4.65	21.6225
13	35	448.28	27.08	2.56	6.5536
15	39	517.24	27.78	3.26	10.6276
14	49	482.76	22.22	-2.30	5.2900
13	42	448.28	23.64	-0.88	0.7744
13	46	448.28	22.03	-2.49	6.2001
13	41	448.28	24.07	-0.45	0.2025
12	48	413.79	20.00	-4.52	20.4304
13	33	448.28	28.26	3.74	13.9876
10	38	344.83	20.83	-3.69	13.6161
13	38	448.28	25.49	0.97	0.9409
13	40	448.28	24.53	0.01	0.0001
11	32	379.31	25.58	1.06	1.1236
12	42	413.79	22.22	-2.30	5.2900
10	35	344.83	22.22	-2.30	5.2900
11	36	379.31	23.40	-1.12	1.2544
15	46	517.24	24.59	0.07	0.0049
13	47	448.28	21.67	-2.85	8.1225
16	49	551.72	24.62	0.10	0.0100

Area of Determination = 0.029 mm²

Mean of Stomatal Number (lower epidermis) = 455.17

Mean of Stomatal Index (lower epidermis) = 24.52

Standard deviation of the Stomatal Index = 3.112

D = Deviation from mean.



Table 16.

Vein-Islet Number Determination of *Barleria strigosa* Willd.

Number of Vein-Islets to 4 mm ²	Vein-Islet Number	D	D ²
9	2.25	-2.68	7.1824
23	5.75	0.82	0.6724
9	2.25	-2.68	7.1824
16	4.00	-0.93	0.8649
11	2.75	-2.18	4.7524
21	5.25	0.32	0.1024
22	5.50	0.57	0.3249
22	5.50	0.57	0.3249
20	5.00	0.07	0.0049
19	4.75	-0.18	0.0324
22	5.50	0.57	0.3249
20	5.00	0.07	0.0049
18	4.50	-0.43	0.1849
23	5.75	0.82	0.6724
22	5.50	0.57	0.3249
25	6.25	1.32	1.7424
19	4.75	-0.18	0.0324
15	3.75	-1.18	1.3924
23	5.75	0.82	0.6724
23	5.75	0.82	0.6724
20	5.00	0.07	0.0049
20	5.00	0.07	0.0049
25	6.25	1.32	1.7424
18	4.50	-0.43	0.1849
25	6.25	1.32	1.7424
25	6.25	1.32	1.7424
25	6.25	1.32	1.7424
20	5.00	0.07	0.0049
17	4.25	-0.68	0.4624
15	3.75	-1.18	1.3924

Mean of Vein-Islet Number = 4.93

Standard deviation = 1.103

D = Deviation from mean.

Table 17.

Veinlet Termination Number Determination of *Barleria strigosa* Willd.

Number of Veinlet Terminations to 4 mm ²	Veinlet Termination Number	D	D ²
8	2.00	-0.72	0.5184
14	3.50	0.78	0.6084
13	3.25	0.53	0.2809
14	3.50	0.78	0.6084
6	1.50	-1.22	1.4884
18	4.50	1.78	3.1684
6	1.50	-1.22	1.4884
9	2.25	-0.47	0.2209
12	3.00	0.28	0.0784
13	3.25	0.53	0.2809
13	3.25	0.53	0.2809
15	3.75	1.03	1.0609
15	3.75	1.03	1.0609
8	2.00	-0.72	0.5184
13	3.25	0.53	0.2809
14	3.50	0.78	0.6084
11	2.75	0.03	0.0009
10	2.50	-0.22	0.0484
15	3.75	1.03	1.0609
7	1.75	-0.97	0.9409
7	1.75	-0.97	0.9409
11	2.75	0.03	0.0009
12	3.00	0.28	0.0784
9	2.25	-0.47	0.2209
8	2.00	-0.72	0.5184
14	3.50	0.78	0.6084
7	1.75	-0.97	0.9409
10	2.50	-0.22	0.0484
8	2.00	-0.72	0.5184
7	1.75	-0.97	0.9409

Mean of Veinlet Termination Number = 2.72

Standard deviation = 0.805

D = Deviation from mean.

Table 18.

Basic Plant Data of Leaf of *Barleria cristata* Linn.

Plant Identification						TRT	A ₁ A ₂ C	B ₁ B ₂ C	C ₁ C ₂ C
PHY	CL	ORD	FAM	GEN	SP				
24	2	32	03	01	01	01	000030 000830 080030 100030 200030 500050 680050 682030 780050 900055 980055	000030 000030 001030 001830 003030 004040 205840 285840 286050 305050 305050 386050 486050 706050 806050 989055 989840	000030 000030 001840 002840 082040 301840 784830 785830 786030 884850 905050 907850 988855
24	2	32	03	01	01	02	000045 008890 080045 086040 089045 205840 289065 300045 307865 400045 486865 488845 500015 584840 600045 601040 606860 608845 680015 682090 700045 780015 789060	000045 000045 001045 001860 003045 004045 005060 084845 085060 104815 105015 105845 205845 284865 285845 286015 287060 300045 305015 305015 386015 407065 486015	000030 000845 001045 001065 001845 002845 080045 081065 082045 200015 282860 301845 303060 380045 580045 780045 780815 782015 782845 783845 787060 880045 884815

Table 18 - continued
 Basic Plant Data of Leaf of *Barleria cristata* Linn.

Plant Identification						TRT	A ₁ A ₂ C	B ₁ B ₂ C	C ₁ C ₂ C
PHY	CL	ORD	FAM	GEN	SP				
24	2	32	03	01	01	02	807860 880045 900015 980015	706015 806015 989015 989845	885865 905015 905845 907815 908045 988815 989845
24	2	32	03	01	01	03	000045 008890 080045 086040 089045 205840 289065 300020 307865 400020 486865 488845 500015 506045 584840 600045 601040 606860 680015 682090 700045 780015 789060 807860 880045 900015 980015	000045 000045 001045 001860 003045 004045 005060 084015 084845 085060 104815 105015 105845 284015 284865 205845 285845 286015 287060 300045 305015 305015 386015 407065 407045 486015 488845 706015 788845 806015 989015 989845	000030 000845 001045 001065 001845 002845 080045 081065 082045 200015 282860 301845 303060 380045 580045 780045 780815 782015 782845 783845 787060 880045 884815 885865 905015 905845 907815 908045 988815 989845

Table 18 -- continued
 Basic Plant Data of Leaf of *Barleria cristata* Linn.

Plant Identification						TRT	A ₁ A ₂ C	B ₁ B ₂ C	C ₁ C ₂ C
PHY	CL	ORD	FAM	GEN	SP				
24	2	32	03	01	01	04			908830 988830 989830
24	2	32	03	01	01	05	000045 008845 080040 086040 089045 100040 200045 205840 289045 300045 307840 308815 388015 400045 407865 486840 500045 507865 508890 584840 600045 601060 606840 680045 682045 687815 700045 708015 780010 789040 807840 880010 900028 980028	000045 000045 001045 001845 003045 003070 004045 004045 005060 082845 083070 084070 084845 085060 104045 105845 105840 184870 205070 205895 284040 284840 287045 300045 305895 307825 386045 407045 486045 488845 507845 706045 788810 806045 887845 888845 989024 989840	000090 000045 000845 001045 001040 001845 081040 082045 282860 301845 303060 380040 402845 481060 404045 502045 580040 580810 602060 603845 604045 681860 702040 702865 780840 782040 782840 783825 784890 785840 786040 787045 805025 806045 884840 885865 886845 887045 905040

Table 18 - continued
 Basic Plant Data of Leaf of *Barleria cristata* Linn.

Plant Identification						TRT	A ₁ A ₂ C	B ₁ B ₂ C	C ₁ C ₂ C
PHY	CL	ORD	FAM	GEN	SP				
24	2	32	03	01	01	05			905840 907845 908040 908010 908810 988845 989825
24	2	32	03	01	01	06	000030 008830 080030 100030 200030 500050 508835 680050 682045 687865 708065 780050 900055 980055	000030 000030 001030 001830 003030 004045 084845 184865 205065 205835 305835 306865 386055 486055 486056 706055 806055 989055	000030 000030 001845 002845 080045 082045 301845 702865 782845 783865 784835 805065 884855 905056 907855 988855 989838
24	2	32	03	01	01	07	000030 002810 007010 008830 087810 100010 107810 108825 200010 207010 208825 286821 288875 308810 407870 500070 507810	000030 000030 000010 000010 000010 001075 001075 001810 002010 003010 004010 081010 082845 085010 989053	000030 000010 000075 000821 080010 080075 080810 180010 180810 200010 200821 200810 302010 402810 988853

Table 18 - continued
 Basic Plant Data of Leaf of *Barleria cristata* Linn.

Plant Identification						TRT	A ₁ A ₂ C	B ₁ B ₂ C	C ₁ C ₂ C
PHY	CL	ORD	FAM	GEN	SP				
24	2	32	03	01	01	07	607010 682030 900053 980053		
24	2	32	03	01	01	08	000030 008830 080030 089030 289030 300030 308865 388065 400030 407865 500010 507865 508835 600035 609010 682045 687870 700080 708080 785040 786080 787030 788010 789010 880080 900058 980058	000030 000030 001030 001830 003030 004080 004080 005835 085080 086013 104021 105835 205835 286013 305835 306813 387845 407080 488870 507845 608870 788870 909080 989053	000030 001845 082045 180810 200810 301845 401010 481075 484010 502010 580821 602010 603845 604010 681875 700010 702875 782845 783880 784835 788821 805013 885080 886810 887010 908070 908880 988858 989830
24	2	32	03	01	01	09	000080 008880 080080 089080 288880 300080 308865	000080 000058 001080 001080 001880 002080 003080	000035 000080 000080 000880 001845 080080 080080

Table 19.

Basic Plant Data of Leaf of *Barleria lupulina* Lindl.

Plant Identification						TRT	A ₁ A ₂ C	B ₁ B ₂ C	C ₁ C ₂ C
PHY	CL	ORD	FAM	GEN	SP				
24	2	32	03	01	02	01	000030	000030	000030
							308830	000830	000830
							380030	001030	001830
							388030	002030	300030
							480050	003830	502030
							500050	005030	605040
							587830	083850	684040
							700050	100030	686030
							706830	203850	784850
							786030	284850	803850
							786830	485050	833850
							800050	505050	884850
							887830	687050	885050
							900055	705050	886050
								785850	907050
								806850	988055
								808050	
							900050		
							908855		
24	2	32	03	01	02	02	000045	000045	000045
							380015	000845	000890
							409065	001060	001065
							480015	002045	001845
							500015	003845	082860
							587065	003865	282060
							587890	005090	200045
							589065	083810	500045
							600045	083865	501815
							608040	085890	605090
							681040	100045	680045
							684060	183845	681845
							700015	201845	683045
							706890	203815	703045
							709065	206065	784815
							780045	280045	785045
							786060	284815	786860
							786860	304845	800015
							788065	306065	803815
							800015	406045	806045
							804040	485015	883815

Table 19 - continued
 Basic Plant Data of Leaf of *Barleria lupulina* Lindl.

Plant Identification						TRT	A ₁ A ₂ C	B ₁ B ₂ C	C ₁ C ₂ C
PHY	CL	ORD	FAM	GEN	SP				
24	2	32	03	01	02	02	806040	487865	884815
							882840	505015	885015
							887060	607865	886015
							887890	680045	907015
							900015	686845	908060
							904840	687015	980015
							906040	705015	988015
								785815	989845
								806815	
								808015	
								889045	
								900015	
								908815	
								989845	
24	2	32	03	01	02	03	000030	000045	000045
							108845	000845	000890
							208045	001060	001065
							308845	002045	001845
							380015	003845	081865
							408845	003865	082860
							409065	005090	282060
							480015	083810	300045
							500015	083865	500045
							587065	085890	501815
							587890	100045	605090
							589065	183845	680045
							600045	201845	681845
							608045	203815	683045
							681040	204845	703045
							684060	206065	784815
							700015	280045	785045
							706890	280845	786860
							708045	284815	800015
							709065	304845	803815
							780045	306065	806045
							786060	406045	883815
							786860	485015	884815
							788060	487865	885015
							800015	505015	886015
							804040	589045	907015
							806065	687865	908060
							882840	680045	980015

Table 19 - continued
 Basic Plant Data of Leaf of *Barleria lupulina* Lindl.

Plant Identification						TRT	A ₁ A ₂ C	B ₁ B ₂ C	C ₁ C ₂ C
PHY	CL	ORD	FAM	GEN	SP				
24	2	32	03	01	02	03	887060 887890 900015 904840 906065	686845 687015 705015 785815 806815 808015 889045 900015 908815 989845	988015 989845
24	2	32	03	01	02	04	000030 108838 109030 208038 286865 289030 308830 380030 386865 388038 408830 409030 480030 486865 500030 586865 587030 587838 589030 600030 608030 681030 684030 685865 686870 687865 700030 708030 709030 780065 784065 786070	000030 000835 001030 002030 002065 003830 003810 005045 082865 083830 083810 085845 100030 103810 104870 183830 185830 201830 203830 204870 205870 206030 280030 280830 284830 304830 305870 306030 386870 404865 407030 485030	000030 000845 001030 001830 081830 082830 282030 300030 301030 380830 382065 401830 480830 500030 502065 583830 602065 603830 605045 680030 681830 683030 684045 686030 702810 703045 705865 786830 800030 804870 806030 880065

Table 19 - continued
 Basic Plant Data of Leaf of *Barleria lupulina* Lindl.

Plant Identification						TRT	A ₁ A ₂ C	B ₁ B ₂ C	C ₁ C ₂ C
PHY	CL	ORD	FAM	GEN	SP				
24	2	32	03	01	02	04	786065	485870	881865
							787870	486070	883065
							788030	487830	884070
							800035	505030	905070
							804030	586070	906070
							806030	589030	907070
							882830	607810	908030
							887030	680030	988030
							887845	685065	989830
							900035	686870	
							904830	687875	
							906030	700065	
								706870	
								707010	
								785830	
								806830	
								807830	
								808030	
								809035	
								889030	
								900030	
								908830	
								909835	
								989830	
24	2	32	03	01	02	05	000045	000045	000090
							108840	000845	000845
							109045	001040	001040
							208040	002045	001840
							286825	002025	081840
							289045	003845	082840
							308845	003825	282060
							380045	005090	300045
							386825	082825	301040
							388040	083840	380840
							408840	083825	382025
							409045	085890	401845
							480045	100045	480840
							486825	103825	500040
							500045	104824	502025
							586825	183840	583845
							587040	185860	602025
							587840	201845	603840

Table 19 - continued
 Basic Plant Data of Leaf of *Barleria lupulina* Lindl.

Plant Identification						TRT	A ₁ A ₂ C	B ₁ B ₂ C	C ₁ C ₂ C
PHY	CL	ORD	FAM	GEN	SP				
24	2	32	03	01	02	05	589045	203840	680040
							600045	204824	681840
							608040	205824	683040
							681040	206025	684045
							684040	280040	686040
							685825	280845	703045
							686890	284840	705825
							687865	304840	786840
							700045	305890	800040
							708045	306025	806040
							709045	386825	880025
							780025	404865	881825
							784025	407025	883025
							786090	485040	908060
							786025	485890	988045
							787890	486025	989840
							788040	487840	
							800025	505040	
							804040	586025	
							806040	589045	
							882840	607810	
							887040	680040	
							887845	685040	
							900025	686890	
							904840	687810	
							906040	700025	
								706890	
								707010	
								785840	
								806840	
								807845	
								808045	
								809045	
								889045	
								900040	
								908845	
								909845	
								989845	
24	2	32	03	01	02	06	000030	000030	000030
							308830	000830	000830
							388030	001030	001830
							587830	002030	300030

Table 19 - continued
 Basic Plant Data of Leaf of *Barleria lupulina* Lindl.

Plant Identification						TRT	A ₁ A ₂ C	B ₁ B ₂ C	C ₁ C ₂ C
PHY	CL	ORD	FAM	GEN	SP				
24	2	32	03	01	02	06	706065 706830 786030 786830 800055 887830 900055	003830 005045 085845 203850 284850 305865 485055 505055 586055 687050 705055 785855 806850 808055 908855	605045 684045 686030 803865 804865 883855 884855 886055 905065 907055 988055
24	2	32	03	01	02	07	000030 007810 207010 286875 308010 408010 487810 587810 687010 800030 887830 900053	000030 000830 001075 001810 002010 002810 003010 004810 080810 082075 085845 908853	000030 000010 000830 000810 080010 080810 100010 180021 180810 200875 281810 282810 300030 988053
24	2	32	03	01	02	08	000030 386810 486810 586810 685813 686813 687813 700010 780010 783010 784010 786013	000030 000830 001030 002010 003010 003830 004810 005045 083010 085845 103021 103810	000030 000845 100010 280010 300030 301010 380810 382010 401810 480810 500030 502010

Table 19 - continued
 Basic Plant Data of Leaf of *Barleria lupulina* Lindl.

Plant Identification						TRT	A ₁ A ₂ C	B ₁ B ₂ C	C ₁ C ₂ C
PHY	CL	ORD	FAM	GEN	SP				
24	2	32	03	01	02	08	787813 800010 887830 900053	104810 204810 205810 287010 305813 386810 407070 485813 486010 507010 580010 586013 607810 686813 687875 706813 707010 809080 908853 909870	504010 584810 602010 603810 605045 684045 702810 703045 704810 705810 803010 804813 805810 880010 881810 883010 884010 886870 888080 905013 906013 907010 909080 988058
24	2	32	03	01	02	09	000080 108880 208080 308080 408080 480080 487880 587880 600080 685870 686870 687880 780080 786070 787880 800080 887830 900058	000080 000080 000880 001080 002080 003080 005045 082880 085845 100080 103880 104880 205880 305870 386880 485813 486080 586013	000030 000858 001830 100080 100080 280080 300080 301080 380880 382080 401880 480880 500080 502050 503080 584810 501880 502010

Table 19 - continued
 Basic Plant Data of Leaf of *Barleria lupulina* Lindl.

Plant Identification						TRT	A ₁ A ₂ C	B ₁ B ₂ C	C ₁ C ₂ C
PHY	CL	ORD	FAM	GEN	SP				
24	2	32	03	01	02	09		607810 686813 706813 707010 809080 908853 909880	602880 603810 605045 682021 684045 705810 783080 803080 804813 805880 880010 884080 886880 888080 905013 906013 909080 988080

Table 20.

Basic Plant Data of Leaf of *Barleria prionitis* Linn.

Plant Identification						TRT	A ₁ A ₂ C	B ₁ B ₂ C	C ₁ C ₂ C
PHY	CL	ORD	FAM	GEN	SP				
24	2	32	03	01	03	01	000030	000030	000030
							180030	000030	000030
							200030	000030	885050
							686830	002030	885850
							686830	003830	908850
							707830	285050	988855
							787030	385850	
							788030	485850	
							807830	505850	
							880050	506850	
							900055	606050	
							980055	806050	
								889850	
								909850	
24	2	32	03	01	03	02	000045	000045	000045
							000040	000045	000045
							100040	001060	001865
							109045	002045	002865
							180045	003840	082865
							186845	004860	200045
							187845	080065	280045
							200045	084040	383860
							206045	084860	387865
							207845	104025	403040
							209065	105865	583065
							383065	206860	583860
							409065	284045	587865
							500045	285015	680045
							587865	306860	705045
							588840	384845	780045
							600045	385815	782845
							600840	400045	783045
							601840	407840	784045
							609060	485815	785860
							680045	505015	807865
							683840	505815	809845
							686860	506815	880045
							686860	588040	885015
							700045	606015	885815
							701840	800045	908815

Table 20 - continued
 Basic Plant Data of Leaf of *Barleria prionitis* Linn.

Plant Identification						TRT	A ₁ A ₂ C	B ₁ B ₂ C	C ₁ C ₂ C
PHY	CL	ORD	FAM	GEN	SP				
24	2	32	03	01	03	02	707860 786845 787060 788060 800045 806040 807860 880025 884040 887065 889060 900015 906840 980015	806015 808840 809045 889815 909815	909845 980015 988815
24	2	32	03	01	03	03	000045 000040 100045 109045 180045 186845 187845 188845 200045 206045 207845 209065 409065 500045 587865 588840 600045 600840 601840 609060 680045 683840 686860 686860 700045 701840 707860	000045 000045 001060 002045 003840 004045 004845 080065 084040 084845 104025 105865 206860 284045 284845 285015 306860 308045 384845 385815 400045 406845 407840 485815 505015 505815 506815	000060 000060 001865 002865 082865 200045 280045 383860 387865 403045 502045 583065 583860 587865 680045 705045 780045 782845 783045 784045 785860 807865 809845 880045 885015 885815 908815

Table 20 - continued
 Basic Plant Data of Leaf of *Barleria prionitis* Linn.

Plant Identification						TRT	A ₁ A ₂ C	B ₁ B ₂ C	C ₁ C ₂ C
PHY	CL	ORD	FAM	GEN	SP				
24	2	32	03	01	03	03	786840	507865	909845
							787060	587045	980015
							788060	588040	988815
							800045	606015	
							806040	687840	
							807860	800045	
							880025	806015	
							884040	808840	
							887065	809845	
							889060	885040	
							900015	889815	
							906840	909815	
							980015		
24	2	32	03	01	03	04	000030	000030	000030
							109030	000030	000030
							109830	001030	001830
							180030	002030	002830
							186830	003010	080830
							187830	003830	082830
							188830	004870	100030
							200030	004830	200030
							206030	005865	200830
							207830	084830	280030
							209030	102830	383830
							380065	104030	387830
							386865	105030	403030
							408065	105830	404865
							409030	184870	502030
							480030	204830	583030
							486865	206830	583830
							506865	280065	584865
							587830	283830	587830
							588830	284030	680030
							600030	285030	683830
							609030	285870	684865
							680030	285865	685030
							683830	306830	780030
							685870	307030	782830
							686870	308030	783030
							688870	384830	784030
							700065	385830	785830
							706865	400065	804870

Table 20 - continued
 Basic Plant Data of Leaf of *Barleria prionitis* Linn.

Plant Identification						TRT	A ₁ A ₂ C	B ₁ B ₂ C	C ₁ C ₂ C
PHY	CL	ORD	FAM	GEN	SP				
24	2	32	03	01	03	04	707870	406870	807830
							786870	407830	809830
							787030	485065	880065
							788870	505030	884065
							800030	506070	885870
							806070	507870	906870
							807830	587030	908830
							880030	588030	908830
							884030	606030	909830
							887030	687870	980030
							889030	688070	
							900030	707865	
							906830	800030	
							980030	806030	
								808030	
								808830	
								809830	
								889830	
								909830	
24	2	32	03	01	03	05	000045	000045	000045
							109045	000045	000045
							109845	001045	001845
							180045	002045	002845
							186840	003070	080845
							187865	003840	082845
							188840	004815	100045
							200045	004845	200040
							206040	005825	200845
							207865	084845	280040
							209045	102870	383860
							380025	104010	387840
							383040	105040	403045
							386825	105845	404825
							408065	184810	502045
							409045	204840	583040
							480040	206840	583860
							486825	280010	584825
							506825	283840	587840
							587845	284040	680040
							588865	285040	683845
							600045	285890	684825
							600840	285825	685045

Table 20 - continued
 Basic Plant Data of Leaf of *Barleria prionitis* Linn.

Plant Identification						TRT	A ₁ A ₂ C	B ₁ B ₂ C	C ₁ C ₂ C
PHY	CL	ORD	FAM	GEN	SP				
24	2	32	03	01	03	05	601865	306840	780040
							609045	307010	782845
							680045	308040	783045
							683840	384840	784045
							685890	385840	785860
							686890	400010	804813
							688825	406890	807840
							700025	407840	809824
							701840	485025	880025
							706825	505040	884025
							707890	506090	885813
							786890	507815	906813
							787040	587040	908845
							788825	588040	908825
							800045	606040	909824
							806070	687890	980045
							807840	688015	
							880045	707825	
							884040	800040	
							887040	806040	
							889045	808045	
							900045	808845	
							906840	809845	
							980045	889838	
								909838	
24	2	32	03	01	03	06	000030	000030	000030
							180030	000030	000030
							200030	001030	100045
							686830	002030	403045
							686830	285050	502045
							707830	385855	685045
							787030	485855	885055
							788030	505855	885855
							807830	506850	908855
							880055	606055	988855
							900055	806055	
							980055	889855	
								909855	
24	2	32	03	01	03	07	000030	000010	000010
							000010	000075	000075
							002010	000875	000010

Table 20 - continued
 Basic Plant Data of Leaf of *Barleria prionitis* Linn.

Plant Identification						TRT	A ₁ A ₂ C	B ₁ B ₂ C	C ₁ C ₂ C
PHY	CL	ORD	FAM	GEN	SP				
24	2	32	03	01	03	07	006810	001010	000075
							080010	001810	000810
							107810	002075	080075
							108010	002010	080810
							185810	002810	081010
							187010	083010	100075
							188845	084010	100810
							200010	100875	101010
							287010	102010	180075
							288010		180810
							306810		200010
							388075		200875
							388810		201010
							408810		280010
							480010		283810
							487010		300010
							487875		300810
							488810		302010
							502810		380010
							587010		383010
							587810		400010
							607810		400010
							686810		483010
							687075		988853
							687875		
							706875		
							708810		
							900053		
							980053		
24	2	32	03	01	03	08	000030	000030	000030
							109030	000030	000078
							109830	001030	100045
							209030	001810	180810
							380010	002010	200878
							480010	002865	382810
							487810	003080	401010
							489030	003830	403045
							506010	004065	481010
							509030	004810	482810
							585810	005030	485810
							588830	005810	501010
							680078	083810	502045
							684810	102821	502810

Table 20 - continued
 Basic Plant Data of Leaf *Barleria prionitis* Linn.

Plant Identification						TRT	A ₁ A ₂ C	B ₁ B ₂ C	C ₁ C ₂ C
PHY	CL	ORD	FAM	GEN	SP				
24	2	32	03	01	03	08	685813	104030	585810
							686813	184810	682010
							688813	206010	682810
							700010	280010	685045
							707813	283610	705810
							708810	285813	781810
							780010	400010	782010
							786813	406813	804813
							788813	506013	880010
							800010	507878	881010
							806013	687813	883010
							880035	688078	884010
							900080	808078	885813
							900058	808878	887810
							980058	889830	889080
								909078	906813
	909830	988835							
24	2	32	03	01	03	09	000030	000030	000080
							109080	000078	000010
							209080	001078	000045
							386810	001810	100880
							480035	003880	180880
							489080	083880	200880
							509080	102878	322880
							607810	104080	401080
							685870	105080	403045
							686870	285870	481080
							688870	307080	482880
							700010	406870	502045
							707870	506070	502880
							780080	507810	581080
							786870	587080	683880
							788870	687870	685045
							800080	688010	782080
							806070	707880	804813
							900080	808058	880010
							900058	808858	881010
							980058	889858	883010
								909080	884010
								909858	885813
		886080							
		887080							

Table 20 - continued
 Basic Plant Data of Leaf of *Barleria prionitis* Linn.

Plant Identification						TRT	A ₁ A ₂ C	B ₁ B ₂ C	C ₁ C ₂ C
PHY	CL	ORD	FAM	GEN	SP				
24	2	32	03	01	03	09			887810 889080 906813 908880 988835

Table 21.

Basic Plant Data of Leaf of *Barleria strigosa* Willd.

Plant Identification						TRT	A ₁ A ₂ C	B ₁ B ₂ C	C ₁ C ₂ C
PHY	CL	ORD	FAM	GEN	SP				
24	2	32	03	01	04	01	000030	000030	000030
							480030	002030	080040
							500030	003030	700050
							580030	003830	781050
							680030	083830	800050
							700030	184050	801050
							800030	204830	804050
							880055	205030	901050
							900055	305050	902050
							980055	305850	903050
								385050	904050
								404850	904850
								485850	905850
								486850	907050
								506850	908850
								585850	988855
								605850	
								607050	
								687850	
	785850								
	885850								
	909050								
	988855								
24	2	32	03	01	04	02	000045	000045	000045
							089045	000845	001860
							188045	001060	080045
							189045	002060	080040
							289045	003060	081860
							308045	003060	101060
							381040	003845	182865
							388845	004060	302060
							480045	004845	382865
							489060	005845	502060
							500045	006045	502865
							507865	083845	602060
							580045	086045	682865
							587865	105065	700015
							589060	184015	781015
							608860	187015	800045
							680045	204845	800015

Table 21 - continued
 Basic Plant Data of Leaf of *Barleria strigosa* Willd.

Plant Identification						TRT	A ₁ A ₂ C	B ₁ B ₂ C	C ₁ C ₂ C
PHY	CL	ORD	FAM	GEN	SP				
24	2	32	03	01	04	02	682845	205045	800015
							688045	206045	801015
							700045	305015	802045
							782845	305815	803045
							788845	306845	804015
							800045	385015	805060
							805045	386065	806045
							808045	387815	880045
							880015	406845	886845
							881865	485815	900045
							888045	486815	900015
							900015	506815	901015
							901865	585815	902015
							908060	605815	903015
							980015	607015	904015
								687815	904815
								688045	905815
								785815	907015
								885815	907840
								909015	908815
								909045	980045
								988815	988815
									989845
24	2	32	03	01	04	03	000045	000045	000045
							089045	000845	001860
							188045	001060	080045
							189045	002060	080065
							289045	003060	081860
							308045	003060	101060
							381040	003845	182865
							388845	004060	302060
							480045	004845	382865
							489060	005845	400840
							500045	006045	502060
							507865	083845	502865
							580045	086045	602060
							587865	103815	682865
							589060	105065	683865
							608860	105815	700015
							680045	184015	703865
							682845	187015	781015
							688045	204845	800045

Table 21 - continued
 Basic Plant Data of Leaf of *Barleria strigosa* Willd.

Plant Identification						TRT	A ₁ A ₂ C	B ₁ B ₂ C	C ₁ C ₂ C
PHY	CL	ORD	FAM	GEN	SP				
24	2	32	03	01	04	03	700045	205045	800015
							782845	206045	800015
							788845	305015	801015
							800045	305815	802045
							805040	306845	803045
							808045	385015	804015
							880015	386065	805060
							881865	387815	806045
							888045	404815	809045
							900015	406845	880045
							901865	485815	886860
							908060	486815	900045
							980015	506815	900015
								507045	901015
								585815	902015
								605815	903015
								607015	904015
								687815	904815
								688045	905815
								785815	907015
								789045	907865
								885815	908015
								909015	980045
								909045	988815
								988815	989845
24	2	32	03	01	04	04	000030	000030	000030
							089030	000830	080038
							188030	001030	080030
							189030	002030	180030
							289030	003030	182830
							308030	003030	300830
							381030	003830	400830
							388830	004030	502830
							480030	004830	600030
							489030	005830	602030
							500030	006030	682830
							507830	083030	683830
							580030	083830	700030
							587830	084830	702035
							589030	086030	703830
							608830	103830	781030
							680030	105030	800030

Table 21 - continued
 Basic Plant Data of Leaf of *Barleria strigosa* Willd.

Plant Identification						TRT	A ₁ A ₂ C	B ₁ B ₂ C	C ₁ C ₂ C
PHY	CL	ORD	FAM	GEN	SP				
24	2	32	03	01	04	04	682830	105830	800030
							688030	184030	801030
							700030	203830	802030
							782830	204830	803030
							788830	205030	804030
							800030	206030	805030
							805030	206030	806030
							808030	305030	809830
							880035	305830	880030
							888030	306830	886830
							900030	385030	900030
							908030	385030	900030
							980030	386030	901030
								404830	902030
								406835	903038
								485830	904055
								486830	904035
								487830	904855
								506830	905835
								507030	907030
								585855	907835
								605855	908830
								607030	980030
								608030	988835
								687830	989830
								688070	
								785830	
								789030	
								885830	
								887830	
								888830	
								889830	
								909030	
								909030	
								988830	
24	2	32	03	01	04	05	000045	000045	000045
							089040	000840	080045
							138040	001045	080045
							189040	002060	180045
							289040	003060	182840
							308040	003040	300845
							381040	003845	382845



Table 21 - continued
 Basic Plant Data of Leaf of *Barleria strigosa* Willd.

Plant Identification						TRT	A ₁ A ₂ C	B ₁ B ₂ C	C ₁ C ₂ C
PHY	CL	ORD	FAM	GEN	SP				
24	2	32	03	01	04	05	388840	004060	400860
							480040	004840	502845
							489040	005840	600045
							500040	006040	602045
							507865	083045	682845
							580040	083845	683845
							587865	084845	700045
							589040	086040	702045
							608840	103840	703845
							680040	105045	781045
							682840	105840	800045
							688040	184040	800045
							700040	203840	801040
							782840	204840	802045
							788840	205040	803045
							800040	206045	804045
							805040	206040	805045
							808040	305040	806045
							880010	305840	809840
							888040	306840	880040
							900038	385040	886845
							908040	385040	900040
							980038	386040	900040
								404840	901040
								406845	902040
								485840	903015
								486845	904015
								487845	904025
								506840	904815
								507040	905825
								585815	907010
								605815	907810
								607040	908840
								608040	980040
								687840	988840
								688010	989845
								785840	
								789045	
								885825	
								887845	
								888845	
								889840	
								909045	
								909040	
								988845	

Table 21 - continued
 Basic Plant Data of Leaf of *Barleria strigosa* Willd.

Plant Identification						TRT	A ₁ A ₂ C	B ₁ B ₂ C	C ₁ C ₂ C
PHY	CL	ORD	FAM	GEN	SP				
24	2	32	03	01	04	08	000030	000030	000030
							209810	000078	080030
							389010	003021	100080
							409010	005021	401010
							480010	082021	482845
							489010	083821	500810
							509010	102821	681810
							609010	105021	702010
							709010	105821	703010
							800013	203880	782810
							805013	205010	784845
							809010	206013	800035
							880013	406821	803810
							886013	486070	882080
							888865	488821	882870
							900053	687010	885010
							906865	688070	900078
							907810	789070	904080
							908870	889870	905880
							980053	988853	909010
									980080
									988835
24	2	32	03	01	04	09	000080	000030	000080
							089880	001080	080080
							108880	002080	100080
							209880	003080	180080
							389080	004080	200080
							800080	083880	280880
							880080	084878	602080
							900053	105080	800038
							908880	105880	806080
							980053	205080	882880
								206080	885010
								287010	900038
								307880	904080
								387080	905880
								407880	980080
								487880	988880
								587080	989835
								688080	
								788880	

Table 21 - continued
 Basic Plant Data of Leaf of *Barleria strigosa* Willd.

Plant Identification						TRT	A ₁ A ₂ C	B ₁ B ₂ C	C ₁ C ₂ C
PHY	CL	ORD	FAM	GEN	SP				
24	2	32	03	01	04	09		887880 888880 988858	