

REFERENCES

- Ad Hoc Sub-Committee of Population. 1981. Population plan 1982-1986. National Economic and Social Development Board, Bangkok.
- Alan, A., and Banks, J. (1998). Principles of simulation modeling. In: Banks, J. (ed.) Handbook of simulation: Principles, Methodology, Advances, Applications, and Practice, pp: 31-54. New York: John Wiley & Sons, Inc.
- Andersen, D.F., and Richardson, G.P. 1997. Scripts for group model building. System Dynamics Review. 13: 107-129.
- Ashby, J.A. (2003). Introduction: uniting science and participation in the process of innovation-research development. In: Pound, B., Snapp, S., McDoegall, C., et al. (eds.), Managing natural resources for sustainable livelihoods: Uniting science and participation, pp: 1-19. London: Earthscan.
- Ashby, J.A., and Sperling, L. 1995. Institutionalizing participatory, client-driven research and technology development in agriculture. Development and Change. 26: 753-770.
- Asian Institute of Technology. 1978. The Small Water Resources Development (SWRD). SWRD Report, the Asian Institute of Technology (AIT), Bangkok.
- Axelrod, R.M. 1976. Structure of Decisions: The Cognitive Map of Political Elites. Princeton, New Jersey.
- Axtell, R.L., Andrews, C.J., and Small, M.J. 2003. Agent-Based Models of Industrial Ecosystems, Rutgers University.
- Balci, O. (1998). Verification, validation, and testing. In: Banks, J. (ed.) Handbook of simulation: Principles, Methodology, Advances, Applications, and Practice, pp: 335-396. New York: John Wiley & Sons, Inc.
- Baldwin-Edwards, M. 2008. Towards a theory of illegal migration: historical and structural components. Third World Quarterly. 29: 1449 - 1459.
- Bangkok Business News. Water tunnel: practical but not worthy development project [Online]. 2008. Available from Bangkok Biz News: <http://www.bangkokbiznews.com> [2008, June 5].

- Banks, J. (1998). Principles of simulation. In: Banks, J. (ed.) Handbook of simulation: Principles, Methodology, Advances, Applications, and Practice, pp: 3-30. Atlanta, GA: John Wiley & Sons, Inc.
- Barnaud, C., Trébuil, G., Dufumier, M., and Suphanchaimart, N. (2004). Rural poverty and diversification of farming systems in upper northeast Thailand. In: Dufumier, M. (ed.) Agriculture in Southeast Asia: an update, pp: 157-187.
- Barnaud, C., Paassen, A.V., Trébuil, G., and Promburom, T. (2006). Power relations and participatory water management: lessons from a companion modelling experiment in northern Thailand. Proceedings of 1st Challenge for International Forum on Water and Food (CPWF-CGIAT): 20. 12-17 November 2006, Vientiane, Laos.
- Barnaud, C., Trébuil, G., Dumrongrojwathana, P., and Marie, J. 2008. Area study prior to Companion Modelling to integrate multiple interests in upper watershed management of Northern Thailand. Southeast Asian Studies. 45: 559-585.
- Barreteau, O. 2003a. The joint use of role-playing games and models regarding negotiation processes: characterization of associations. Journal of Artificial Societies and Social Simulation (JASSS). 2.
- Barreteau, O. 2003b. Our companion modelling approach. Journal of Artificial Societies and Social Simulation (JASSS). 6.
- Barreteau, O., and Bousquet, F. 2000. SHADOC: a multi-agent model to tackle viability of irrigated systems. Annual of operations research. 94: 139-162.
- Barreteau, O., Bousquet, F., and Attonaty, J.M. 2001. Role-playing games for opening the black box of multi-agent systems: method and lessons of its application to Senegal River Valley irrigated systems. Journal of Artificial Societies and Social Simulation (JASSS). 4.
- Barreteau, O., Le Page, C., and Perez, P. 2007. Contribution of simulation and gaming to natural resource management issues: an introduction Simulation & Gaming. 38: 185-194.

- Becu, N., Neef, A., Schreinemachers, P., and Sangkapitux, C. 2007. Participatory computer simulation to support collective decision-making: Potential and limits of stakeholder involvement. Land Use Policy. 10: 498-509.
- Becu, N., Perez, P., Walker, A., Barreteau, O., and Le Page, C. 2003. Agent based simulation of a small catchment water management in northern Thailand Description of the CATCHSCAPE model. Ecological Modelling. 170: 319-321.
- Berkes, F., Colding, J., and Folke, C. (2003). Navigating Social-ecological Systems: Building Resilience for Complexity and Change. Cambridge: Cambridge University Press.
- Bimber, B., Flanagin, A.J., and Stohl, C. 2005. Reconceptualizing Collective Action in the Contemporary Media Environment. Communication Theory. 15: 365-388.
- Bonabeau, E. (2001). Agent-based modeling: Methods and techniques for simulating human systems. Proceedings of the National Academy of Sciences: 280-287. October 4-6, 2001, the Arnold and Mabel Beckman Center of the National Academies of Science and Engineering in Irvine, CA.
- Bousquet, F., and Le Page, C. 2004. Multi-agent simulations and ecosystem management: a review. Ecological Modelling. 176: 313-332.
- Bousquet, F., and Trébuil, G. (2005). Introduction to companion modeling and multi-agent systems for integrated natural resource management in Asia. In: Bousquet, F., Trébuil, G. and Hardy, B. (eds.), Companion Modeling and Multi-Agent Systems for Integrated Natural Resource Management in Asia, pp: 1-20. Los Baños, Laguna, Philippines: IRRI.
- Bousquet, F., Bakam, I., Proton, H., and Le Page, C. (1998). CORMAS: common-pool resources and multi-agent systems. Proceedings of International Conference on Industrial and Engineering Applications of Artificial Intelligence and Expert Systems: 826-837. Benicasim (Spain). Berlin (Germany): Springer-Verlag.
- Bousquet, F., Barreteau, O., Le Page, C., Mullon, C., and Weber, J. (1999). An environmental modelling approach. The use of multi-agents simulations. In:

- Blasco, F. and Weill, A. (eds.), Advances in Environmental and Ecological Modelling, pp: 113-122. Paris: Elsevier.
- Bureau of Rice Research and Development. Rice varieties recommended for the northeast Thailand [Online]. 1999. Available from Bureau of Rice Research and Development, Rice Department, Ministry of Agriculture and Cooperatives: http://www.ricethailand.go.th/brrd/rice_tech.htm [2005, August 23].
- Cain, J.D., Jinapala, K., Makin, I.W., Somaratna, P.G., Ariyaratna, B.R., and Perera, L.R. 2003. Participatory decision support for agricultural management: A case study from Sri Lanka. Agricultural Systems. 76: 457-482.
- Carley, K.M. 1999. On generating hypotheses using computer simulations. Systems Engineering. 2: 69-77.
- Carpenter, S.R., and Gunderson, H.L. 2001. Coping with collapse: ecological and social dynamics in ecosystem management. BioScience. 51: 451-457.
- Casti, J.L. (1997). Would-be worlds: how simulation is changing the frontiers of science. New York: John Wiley and Sons, Inc.
- Chamratrithirong, A., Archavanitkul, K., Richter, K., Guest, P., Thangthai, V., Boonchalaksi, W., Piriathamwong, N., and Vong-Ek, P. 1995. National migration survey of Thailand. Institute for Population and Social Research, Nakhonpathom.
- Chantavanich, S., and Risser, G. (2000). Intra-regional migration in Southeast and East Asia: theoretical overview, trends of migratory flows, and implications for Thailand and Thai migrant workers. In: Chantavanich, S., Germershausen, A. and Beesey, A. (eds.), Thai migrant workers in East and Southeast Asia 1996-1997, pp: 10 - 27. Bangkok: Asian Research Center for Migration (ARCM).
- Chantawong, M., Boonkrob, P., Chunjai, C., and Kochasawasdi, P. (2003). Water privatisation in Thailand. Proceedings of Politics of the Commons: articulating development and strengthening local practices: 69-71. July 11-14, 2003, Chiang Mai, Thailand.

- Charoensutipun, P. 2001. Decentralization and Governmental Administration in Thailand. Policy and Planning Division, Community Development Department, Ministry of Interior, Bangkok.
- Cochrane, S. 1979. The population of Thailand: its growth and welfare. World Bank Working Paper No. 337, The World Bank, Washington.
- Cockerill, K., Passell, H., and Tidwell, V. 2006. Cooperative modeling: building bridges between science and the public. Journal of the American Water Resources Association. 42: 457-471.
- Conway, H.J. 1970. The Game of Life. Scientific American, 223: 120-123.
- Cooper, M., Harbert, R., and Hill, G. (2000). Mesozoic and Cenozoic thick-skinned deformation in Northeast Thailand. Proceedings of 2000 CSEG conference.
- Coxhead, I., and Plangpraphan, J. (1998). Thailand's economic boom and bust, and the fate of agriculture. In: Anderson, B. and Suwanraks, R. (eds.), Thai Development and Research Institute (TDRI): quarterly review. pp: 15-24.
- d'Aquino, P., Le Page, C., Bousquet, F., and Bah, A. 2003. Using Self-Designed Role-Playing Games and a Multi-Agent System to Empower a Local Decision-Making Process for Land Use Management: The SelfCormas Experiment in Senegal. Journal of Artificial Societies and Social Simulation (JASSS). 6.
- d'Aquino, P., Barreteau, O., Etienne, M., Boissau, S., Aubert, S., Bousquet, F., Le Page, C., and Dare, W. (2002). The role playing games in an ABM participatory modeling process: outcomes from five different experiments carried out in the last five years. In: Rizzoli, A.E. and Jakeman, A.J. (eds.), Integrated assessment and decision support. iEMSs "1st biennial meeting of the international environmental modeling and software society", pp: 23-34. Lugano, Switzerland.
- Daniell, K.A., and Ferrand, N. 2006. Participatory modelling for water resource management and planning. AQUASTRESS: Mitigation of water stress through new approaches to integrating management, technical, economic and institutional instrument. CEMAGREF, Montpellier, France.
- Daniels, S., and Walker, G.B. 1996. Collaborative learning: improving public deliberation in ecosystem-based management. Environmental Impact Assessment Review. 16: 71-102.

- David, W.B. (2002). An introduction to Object-Oriented Analysis: Objects and UML in plain English. 2nd Edition. New York; John Wiley & Sons, Inc.
- De Jong, G.F. (1997). Temporary and more permanent rural-urban migration in Thailand. Proceedings of Population Association of America Annual Meeting: 23-32. Washington, D.C.
- De Jong, G.F. 2000. Expectations, gender, and norms in migration decision-making. Population Studies. 54: 307-319.
- De Jong, G.F., and Fawcett, J.T. (1981). Motivations for migration: an assessment and a value-expectancy research model. In: De Jong, G.F. and Gardner, R.W. (eds.), Migration decision making: multidisciplinary approaches to microlevel studies in developed and developing countries, pp: 13-57. New York, USA: Program Press Inc. Maxwell House.
- Deaton, M.L., and Winebrake, J.J. (1999). Dynamic modeling of environmental systems. Harrisonburg, VA: Spring-Verlag New York.
- Deshingkar, P. (2004). Understanding the implications of migration for pro-poor agricultural growth. Proceedings of the DAC POVNET Agriculture Task Group Meeting: 22. June 2004, Helsinki. Oversea Development Institute.
- Eden, C., and Ackermann, F. 1996. Horses for courses: a stakeholder approach to the evaluation of GDSSs. Group decision and negotiation. 5: 501-519.
- Epstein, J.M. 2008. Why Model? Journal of Artificial Societies and Social Simulation (JASSS). 11.
- Epstein, J.M., and Axtell, R.L. (1996). Growing artificial societies-social science from bottom up (Complex Adaptive Systems). Cambridge, MA: MIT press.
- Faculty of Economics Kasetsart University. 2000. Outline and policy for sustainable agricultural development: case study in Northeast region. Department of Agricultural Economics, Faculty of Economics, Kasetsart University, Bangkok.
- Feeny, D. 2003. The political economy of regional inequality: the Northeast of Thailand 1800-2000. An Interdisciplinary Journal of Southeast Asian Studies. 17: 29-59.
- Ferber, J. (1999). Multi-agent systems: an introduction to distributed artificial intelligence. New York: Addison-Wesley Longman.

- Fitzpatrick, P., and Sinclair, A.J. 2003. Learning through public involvement in environmental assessment hearing. Journal of Environmental Management. 67: 161-174.
- Food and Agriculture Organization. All about rice: Thailand. International year of rice 2004 [Online]. 2004. Available from Food and Agriculture Organization of the United Nations (FAO): <http://www.fao.org/rice2004/en/p17.htm> [2004, June 18].
- Ford, D.N., and Sterman, J.D. 1998. Expert knowledge elicitation to improve formal and mental models. System Dynamics Review. 14: 309-340.
- Fowler, M. (2004). UML distilled: a brief guide to the standard object modeling language 3rd edition. Boston, MA: Addison-Wesley.
- Fuller, T.D., Lightfoot, P., and Kamnuansila, P. 1985. Rural-urban mobility in Thailand: a decision-making approach. Demography. 22: 565-579.
- Funtowicz, S.O., and Ravetz, J.R. 1993. Science for the Post-Normal Age. Futures. 25: 735-755.
- Gardner, R.W. (1981). Macrolevel influences on the migration decision process. In: DeJong, G.F. and Gardner, R.W. (eds.), Migration decision making: multidisciplinary approaches to microlevel studies in developed and developing countries, pp: 59-87. New York, USA: Program Press Inc. Maxwell House.
- Gilbert, N. (2008). Agent-Based Models. 153 vols. Quantitative Applications in the Social Sciences. London: Sage Publications.
- Gilbert, N., and Troitzsch, K.G. (1999). Simulation for the social scientist. Guildford and Kings Lynn: Biddles.
- Gilbert, N., Maltby, S., and Asakawa, T. (2002). Participatory simulations for developing scenarios in environmental resource management. Proceedings of 3rd international workshop on agent-based simulation: 6. April 07-09, 2002, University of Passau, Germany.
- Godet, M., and Roubelat, F. 1996. Creating the future: the use and misuse of scenarios. Long Range Planning. 29: 164-171.
- Goldstein, S. 1987. Forms of mobility and their policy implications: Thailand and China compared. Social Forces. 65: 915-942.

- Gonzalez, R.M. 2002. Joint learning with GIS: multi-actor resource management. Agricultural Systems. 73: 99-111.
- Grandstaff, T.B. (1988). Environment and economic diversity in Northeast Thailand. In: Charoenwatana, T. and Rambo, T. (eds.), Sustainable rural development in Asia, pp: 11-22. Khon Kaen, Thailand: Symposium on agroecosystem research.
- Green Research Unit. 2003. CORMAS: Common-pool Resources and Multi-Agents Systems Tutorial 1. Green Research Unit, Centre de coopération internationale en recherche agronomique pour le développement (CIRAD), Montpellier, France.
- Grimm, V., and Railsback, S.F. (2005). Individual-based Modeling and Ecology. Princeton, NJ.: Princeton University Press.
- Grimm, V., Berger, U., Bastiansen, F., Eliassen, S., Ginot, V., Giske, J., Goss-Custard, J., Grand, T., Heinz, S.K., Huse, G., Huth, A., Jepsen, J.U., Jørgensen, C., Mooij, W.M., Muller, B., Peer, G., Piou, C., Railsback, S.F., Robbins, A.M., Robbins, M.M., Rossmannith, E., Ruger, N., Strand, E., Souissi, S., Stillman, R.A., Vabø, R., Visser, U., and DeAngelis, D.L. 2006. A standard protocol for describing individual-based and agent-based models. Ecological modelling. 198: 115-126.
- Gross, D., and Strand, R. 2000. Agent-based models assist decisions on large-scale practical problems? A philosophical analysis, Complexity. 5: 26-33.
- Gunderson, H.L., and Holling, C.S. (2002). Panarchy: Understanding Transformations in Human and Natural Systems. Washington, DC: Island Press.
- Gurung, T.R. 2006. Companion Modeling, Conflict Resolution, and Institution Building: Sharing Irrigation Water in the Lingmuteychu Watershed, Bhutan. Ecology and Society. 11: 49.
- Gurung, T.R., Promburom, P., Naivinit, W., Thongnoi, M., Barnaud, C., and Trébuil, G. (2008). Effects of companion modeling on water management: comparative analysis across five sites in Bhutan and Thailand. Proceedings of Second International Forum on Water and Food (IFWF2), CPWF-CGRAI. 16-18 November 2008, Addis Ababa, Ethiopia.

- Hales, D., Rouchier, J., and Edmonds, B. 2003. Model-to-model analysis. Journal of Artificial Societies and Social Simulation (JASSS). 6.
- Hansen, L.P., and Heckman, J.J. 1996. The empirical foundations of calibration. Journal of Economic Perspectives. 10: 87-104.
- Hare, M., Heeb, J., and Pahl-Wostl, C. 2002. The symbiotic relationship between role-playing games and model development: a case study in participatory model building and social learning for sustainable urban water management. Proceedings of Communication to ISEE'2002. 6-9 March 2002. Sousse.
- Hare, M., Letcher, R.A., and Jakeman, A.J. 2003. Participatory Modelling in Natural Resource Management: A Comparison of Four Case Studies. Integrated Assessment. 4: 62-72.
- Hewison, K. 2004. Thai migrant workers in Hong Kong. Journal of Contemporary Asia. 34: 318-335.
- Holling, C.S. 2001. Understanding the complexity of economic, ecological, and social systems. Ecosystems. 4: 390-405.
- Hoong, T., and Chang, P. (1981). A review of micro migration research in the third World context. In: De Jong, G.F. and Gardner, R.W. (eds.), Migration decision making: multidisciplinary approaches to microlevel studies in developed and developing countries, pp: 303-327. New York: Program Press Inc. Maxwell House.
- Hornby, W.F., and Jones, M. (1993). An introduction to population geography. Cambridge: Cambridge University Press.
- Hulse, D.W., and Gregory, S.V. (2001). Alternative futures as an integrative framework for riparian restoration of large rivers. In: Dale, V.H. and Haeuber, R.A. (eds.), Applying Ecological Principles to Land Management, pp: 194-212. New York: Springer-Verlag.
- Jakeman, A.J., Letcher, R.A., and Norton, J.P. 2006. Ten iterative steps in development and evaluation of environmental models. Environmental Modelling and Software. 21: 602-614.
- Janssen, M.A. (2002). Complexity and ecosystem management: the theory and practice of multi-agent systems. Northampton, MA: Edward Elgar.

- Jaynes, E.T., and Bretthorst, G.L. (2003). Probability theory: the logic of science. Cambridge: The University Press.
- Jitsanguan, T. 2000. Sustainable development policy and guideline: northeast region. Faculty of Economics, Kasetsart University, Bangkok.
- Jitsanguan, T. 2001. Sustainable agricultural systems for small-scale farmers in Thailand: implications for the environment. Food and fertilizer technology center (FFTC), Taipei, Taiwan.
- Jitsuchon, S. (2001). Development and Poverty: Executive Summary. Proceedings of Poverty Reduction Strategies. November 24, 2001, Ambassador City Jomtien, Chon Buri. Thailand Development Research Institute (TDRI).
- Jones, H., and Pardthaisong, T. 1999. The impact of overseas labour migration on rural Thailand: Regional, community and individual dimensions. Journal of Rural Studies. 15: 35-47.
- Jongdee, B., Pantuwan, G., Fukai, S., and Fischer, K. 2006. Improving drought tolerance in rainfed lowland rice: An example from Thailand. Agricultural Water Management. 80: 225-240.
- Jorgensen, S.E., and Bendoricchio, G. (2001). Fundamentals of ecological modelling. 3rd ed. Kindlington, Oxford: Elsevier Science.
- Khon Kaen University. 1994. Study of potential development of water resources in the Chi and Mun River basins. Khon Kaen.
- KKU-Ford Cropping System Project. 1982. An agroecosystem analysis of Northeast Thailand. Faculty of Agriculture, Khon Kaen University (KKU), Khon Kaen, Thailand.
- Kok, P., O'Donovan, M., Bouare, O., and VanZyl, J. (2003). Post-apartheid patterns of internal migration in South Africa. Cape Town: HSRC Publishers.
- Komklom, K., and Puckdeewattanakul, K. (2005). Object oriented system analysis and design with UML. Bangkok: KTP Com and Consult.
- Lacombe, G., and Naivinit, W. (2005). Modeling a biophysical environment to better understand the decision-making rules for water the use in the rainfed lowland rice ecosystem. In: Trébuil, G., Bousquet, F. and Hardy, B. (eds.), Companion Modeling and Multi-agent system for Integrated Natural Resource Management in Asia. pp: 191-210. Los Baños, Laguna, Philippines: IRRI.

- Le Page, C., and Bommel, P. (2005). A methodology for building agent-based simulations of common-pool resources management: from conceptual model designed with UML to its implementation in CORMAS. In: Bousquet, F., Trebil, G. and Hardy, B. (eds.), Introduction to companion modeling and multi-agent systems for integrated natural resource management in Asia, pp: 327-350. Los Baños, Laguna, Philippines: IRRI.
- Library of Congress. Country profile: Thailand [Online]. 2007. Available from Federal Research Division, Library of Congress: <http://lcweb2.loc.gov/frd/cs/profiles/Thailand.pdf> [2007, February 8].
- Limpinuntana, V. (2001). Physical factors related to agricultural potential and limitations in northeast Thailand. In: Kam, S.P., Hoanh, C.T., Trébuil, G., et al. (eds.), Natural Resource Management Issue in the Korat Basin of northeast Thailand: an overview, pp: 3-18. La Baños, Laguna, Philippines: International Rice Research Institute.
- Liu, Y., Takeuchi, Y., and Okada, N. 2007. Multi-agent based collaborative modelling for flood evacuation planning-Case study of Hagata, Kobae. Annals of Dias. 50: 241-249.
- Mackill, D.J., Coffma, W.R., and Garrity, D.P. (1996). Rainfed lowland rice improvement. Manila: International Rice Research Institute.
- Manarangsang, S. (2002). Evolution of agriculture and its impact to Thai farmers between post world war II and 1993. Bangkok: Chulalongkorn University Press.
- Mann, S.R. 1991. Chaos, criticality, and strategic thought. National Defense University National War College Fort McNair, Washington, DC.
- Massey, D.S., Arango, J., Hugo, G., Kouaouci, A., Pellegrino, A., and Taylor, J.E. 1993. Theories of International Migration: A Review and Appraisal Population and Development Review. 19: 431-466.
- Maticchon. Water supply in Northeast Thailand: local water management or water tunnel [Online]. 2008. Available from Maticchon: www.maticchon.co.th [2008, February 7].

- Matsumura, M., Isarabhakdi, P., and Pleumcharoen, S. 2003. Rural industrialization and return migration: a case study of female factory workers in Northeast Thailand. Journal of Population and Social Studies. 10: 105-130.
- Mayer, I., and De Jong, M. 2004. Combining GDSS and Gaming for Decision Support. Group Decision and Negotiation 13: 223–241.
- McCarthy, J.J., Canziani, O.F., Leary, N.A., Dokken, D.J., and White, K.S. (2001). Climate Change 2001: Impacts, Adaptation, and Vulnerability : Contribution of Working Group II to the Third Assessment Report of the Intergovernmental Panel on Climate Change. Cambridge: Cambridge University Press.
- McKinnon, J.M. (2005). Mobile interactive GIS (MIGIS): Bridging indigenous knowledge and scientific information together. A narrative account. In: Neef, A. (ed.) Participatory approaches for sustainable land use in Southeast Asia, pp: 217-232. Bangkok: White Lotus.
- Means, E., Patrick, R., Ospina, L., and West, N. 2005. Scenario planning: a tool to manage future water utility uncertainty. Journal of American Water Works Association. 97: 68-75.
- Mendoza, G.A., and Prabhu, R. 2006a. Participatory modeling and analysis for sustainable forest management: Overview of soft system dynamics models and applications. Forest Policy and Economics. 9: 179-196.
- Mendoza, G.A., and Martins, H. 2006b. Multi-criteria decision analysis in natural resource management: A critical review of methods and new modelling paradigms. Forest Ecology and Management. 230: 1-22.
- Molle, F., and Koma, Y.S. 2005. Inter-basin Diversions and the Mega-project of Thailand's Proposed Water Grid. Proceedings of the Annual Meeting of the International Studies Association. March 5, 2005. Hilton Hawaiian Village, Honolulu, Hawaii.
- Mongsawad, P. 2007. Sufficiency economy: a contribution to development theory. The School of Development Economics, National Institute of Development Administration.
- Moss, S. 2008. Alternative approaches to the empirical validation of agent-based models. Journal of Artificial Societies and Social Simulation (JASSS). 11.

- Musselman, K.J. (1998). Guideline for success. In: Banks, J. (ed.) Handbook of simulation: Principles, Methodology, Advances, Applications, and Practice, pp: 721-744. John Wiley & Sons, Inc.
- Na Ranong, V. 2000. National strategies for sustainable development in Thailand: a preliminary proposal. Proceedings of the Seminar on Development Strategies organized by TDRI and NESDB. 15 September 2000.
- Naivinit, W. (2005). Companion modelling to understand interactions between land&water use and labour migration in lower northeast Thailand: context, methodology, and preliminary findings. Proceedings of the International Conference on Simulation and Modeling (SIMMOD) 2005: 444-452. Nakornpathom, Thailand. Asian Institute of Technology (AIT).
- Naivinit, W., and Trébuil, G. (2004). Interactions between water use and labour migrations in northeast Thailand: Context, methodology, and preliminary findings. Proceedings on CD-ROM of 4th International and Interdisciplinary Seminar of the Common Program on Irrigated System (PCSI): Hydraulic Coordinations and Social Justice: 11. 25-26 November 2004, Agropolis, Montpellier, France.
- Narayan, D. 1996. What is Participatory Research?. Toward Participatory Research. World Bank, Washington, D.C.
- National Economic and Social Development Board. 2003. Thailand's official poverty line. National Economic and Social Development Board (NESDB), Bangkok.
- National Statistical Office. 2002. Report of the 2002 household socioeconomic survey. National Statistical Office (NSO), Ministry of Information and Communication Technology, Bangkok, Thailand.
- National Statistical Office. 2005. Key statistics of Thailand. National Statistical Office (NSO), Ministry of Information and Communication Technology, Bangkok.
- National Statistical Office. 2007. Statistical yearbook of Thailand. National Statistical Office (NSO), Ministry of Information and Communication Technology, Bangkok.
- Neef, A. (2005). Participatory approaches for sustainable land use in Southeast Asia. Bangkok: White Lotus.

- Neubert, D. 2000. A new magic term is not enough: Participatory approaches in agricultural research. Quarterly Journal of International Agriculture. 39: 25-50.
- Nico Hjortsø, C. 2004. Enhancing public participation in natural resource management using Soft OR—an application of strategic option development and analysis in tactical forest planning. European Journal of Operational Research. 152: 667-683
- Nico Hjortsø, C., Christensen, S.M., and Tarp, P. 2005. Rapid stakeholder and conflict assessment for natural resource management using cognitive mapping: The case of Damdoi Forest Enterprise, Vietnam. Agriculture and Human Values. 22: 149-167.
- Nicolis, G., and Prigogine, I. (1989). Exploring complexity: an introduction. New York: W.H Freeman and Company.
- Office of Agricultural Economics. 2007. Agricultural statistics of Thailand, crop year 2006/2007. Office of Agricultural Economics (OAE), Ministry of Agriculture and Co-operatives, Bangkok.
- Ollagnon, H. 1991. Vers une gestion patrimoniale de la protection et de la qualité biologique des forêts. Forest Trees & People Newl. 3: 2-35.
- Ostrom, E., Schroeder, L., and Wynne, S. (1993). Institutional incentives and sustainable development: Infrastructure policies in perspective. Boulder: Westview Press.
- Pahl-Wostl, C. 2006. The importance of social learning in restoring the multifunctionality of rivers and floodplains. Ecology and Society. 11: 10.
- Paris, T. 2003. Labor out-migration, rice farming and gender roles: synthesis of important findings in major rice production environments in Southeast and South Asia. International Rice Research Institute.
- Parker, D., Berger, T., and Manson, M.S. 2001. Agent-Based Models of Land-Use and Land-Cover Change. Report and Review of an International Workshop, Irvine, California, USA.
- Phupak, S., and Theerapongtanakorn, S. 2006. Whole-farm rubber based agro-forestry analysis: A case study of a rubber farm at UbonRatchathani province. Proceedings of the 3rd conference of Agro-Forestry Network in Thailand. 11-

- 12 August 2006. Faculty of Natural Resource, Prince of Songkla University, Songkla, Thailand.
- Piyasin, S. (1995). The hydrocarbon potential of Khorat Plateau. Proceedings of the international conference on geology, geotechnology and mineral resources of Indochina (Deo-Indo '95): 551-562. 22-25 November 1995, Khon Kaen, Thailand.
- Polhill, G.I., Parker, D., Brown, D., and Grimm, V. 2008. Using the ODD protocol for describing three agent-based social simulation models of land-use change. Journal of Artificial Societies and Social Simulation (JASSS). 11.
- Polthanee, A. (1997). Rice-based cropping system in northeast Thailand. In: Fukai, S., Cooper, M. and Salisbury, J. (eds.), Breeding strategies for rainfed lowland rice in drought-prone environments, pp: 13-23. Australian Centre for International Agricultural Research, Canberra, Australia.
- Prell, C., Huback, K., Reed, M., Quinn, C., Jin, N., Holden, J., Burt, T., Kirby, M., and Sendzimir, J. 2007. If you have a hammer everything tools like a nail: 'traditional' versus participatory model building. Interdisciplinary Science Reviews. 32: 20.
- Progress Technology Consultant Co. Ltd. 2005. Water resource management plan in the Mun basin. 3/15. Department of Water Resources, Ministry of Natural Resources and Environment, Bangkok.
- Promjuy, S., Panvisit, S., Kongsap, S., and Phosan, W. (2003). Community economic of South Esan (Northeast) Thailand: transformation and survival. Bangkok: Sangsan publishing.
- Pukdeewanakul, K., and Komklom, K. (2005). Object oriented system analysis and design with UML. Bangkok: KTP Comp and Consult.
- Purnomo, H., Yasmi, Y., Prabhu, R., Hakim, S., Jafar, A., and Jafar, S. 2003. Collaborative modelling to support forest management: Qualitative systems analysis at Lumut Mountain, Indonesia. Small-scale Forest Economics, Management and Policy. 2: 259-275.
- Rambalsi, G., and Callosa-Tarr, J. (2005). Participatory 3-D modelling: Bridging the gap between communities and GIS technology. In: Neef, A. (ed.)

- Participatory approaches for sustainable land use in Southeast Asia, pp: 205-216. Bangkok: White Lotus.
- Rattanawarang, W., and Punpuing, S. 2003. Migration and land size change: a case study in Nang Rong, Buriram, Thailand. Journal of Population and Social Studies. 11: 95-119.
- Renger, M.,Kolfshoten, G.L., and de Vreede, G.L. 2008. Challenges in Collaborative Modeling: A Literature Review and Research Agenda. International Journal of Simulation and Process Modelling. 4: 248-263.
- Richiardi, M.,Leombruni, R.S., Nicole, and Sonnessa, M. 2006. A common protocol for Agent-Based Social Simulation. Journal of Artificial Societies and Social Simulation (JASSS). 9.
- Richter, K.,Chamratrithirong, A., and Archavanitkul, K. 1990. Migration policy in Thailand: Needed data. Institute for Population and Social Research, Mahidol University, Nakhon Pathom.
- Richter, K.,Guest, P.,Boonchanaksi, W.P., N, and Ogena, N.B. 1997. Migration and the rural family: sources of support and strain in a mobile society. Report of the Northeastern follow-up to the National Migration Survey. Institute for Population and Social Research, Mahidol University, Bangkok.
- Rindfuss, R.R.,Jampaklay, A.,Entwisle, B.,Sawangdee, Y.,Katherine, F., and Prasartkul, P. (2004). The collection and analysis of social network data in Nang Rong, Thailand In: Morris, M. (ed.) Network Epidemiology, pp: 175-200. Oxford, UK: Oxford University Press.
- Röling, N.G., and Wagmaker, M.A.E. (1998). A new practice: facilitating sustainable agriculture. In: Facilitating sustainable agriculture: participatory learning and adaptive management in times of environmental uncertainty, pp: 3-22. Cambridge: Cambridge University Press.
- Roux, D.J.,Rogers, K.H.,Biggs, H.C.,Ashton, P.J., and Sergeant, A. 2006. Bridging the science management divide: Moving from unidirectional knowledge transfer to knowledge interfacing and sharing. Ecology and Society. 11: 4.
- Ruankaew, N.,Le Page, C.,Gajasen, N.,Barnaud, C.,van Paassen, A., and Trébuil, G. (2008). Companion Modelling for Integrated Renewable Resource Management: A new collaborative research approach to create common values

- for sustainable development. . Proceedings of the 2nd ISC2008 Conference. 20-22 August 2008, Basel, Switzerland.
- Rumbaugh, J., Jacobson, I., and Booch, G. (1999). The unified modeling language reference manual. Massachusetts: Addison Wesley Longman.
- Santiphop, T. 2000. The relevant population dynamics to land degradation in the northeast region. Journal of Population and Social Studies. 8: 67-89.
- Schank, P., and Hamel, L. (2004). Collaborative modeling: hiding UML and promoting data examples in NEMo. Proceedings of the 2004 ACM conference on Computer supported cooperative work: 574-577. Chicago, Illinois, USA. ACM New York, NY, USA.
- Schuler, D., and Namioka, A. (1993). Participatory design: Principles and practices. Hillside, NJ: Lawrence Erlbaum Associates.
- Schwartz, P. (1996). The art of the long view: planning for the future in an uncertain world. New York, USA: Currency Doubleday.
- Selener, D. (1997). Participatory action research and social change. New York: Cornell Participatory Action Research Network, Cornell University.
- Shinawatra, B., and Pitackwong, J. (1996). Migration, gender roles and technological change. Proceedings of Competition and Conflict in Asian Agricultural Resource Management: Issue, Options and Analytical Paradigms: 225-236. International Rice Research Institute, Manila, Philippines.
- Siamwalla, A., Vajragupta, Y., and Vichyanond, P. 1999. Foreign Capital Flows to Thailand: Determinants and Impact. Thailand Development Research Institute (TDRI), Bangkok.
- Skeldon, R. 1997. Rural-to-urban migration and its implications for poverty alleviation Asia-Pacific Population Journal. 12: 3-16.
- Skeldon, R. 2002. Migration and poverty. Asia-Pacific Population Journal. 17: 67-82.
- Somrith, B. (1997). Cultivar improvement for rainfed lowland rice in Thailand. Proceedings of Breeding strategies for rainfed lowland rice in drought-prone environments, ACIAR Proceedings 77: 36-42. 5-8 November 1996, Ubon Ratchathani, Thailand.

- Stringer, L., Dougill, A.J., Fraser, E.D.G., Kubacek, K., Prell, C., and Reed, M.S. 2006. Unpacking “participation” in the adaptive management of social–ecological systems: a critical review. *Ecology and Society*. 11.
- Subhadhira, S., Simaraks, S., and Srila, S. 2004. The economic crisis and rural households in Thailand: impact and response. *Southeast Asian Studies*. 42: 46-59.
- Sullivan, C.A., and Meigh, J. 2007. Integration of the biophysical and social sciences using an indicator approach: addressing water problems at different scales. *Water Resource Management*. 21: 111-128.
- Sullivan, K. 2004. Preliminary report of the NSF Workshop on the Science of Design. Department of Computer Science, University of Virginia, Charlottesville, VA.
- Suphanchaimart, N., Wongsamun, C., and Panthong, P. (2005). Role-playing games to understand farmers' land-use decisions in the context of cash-crop price reduction in upper northeast Thailand. In: Bousquet, F., Trébul, G. and Hardy, B. (eds.), Companion Modeling and Multi-Agent Systems for Integrated Natural Resource Management in Asia, pp: 121-139. Los Baños, Laguna, Philippines: IRRI.
- Thai Rice Mills Association. Price of rice by month [Online]. 2008. Available from Thai Rice Mills Association: <http://www.thairicemillers.com> [2008, January 28].
- The World Commission on Dams. 2000. Pak Mun Dam, Mekong River Basin Thailand. Final Report: November 2000, The World Commission on Dams (WCD), Cape Town, South Africa.
- Thongnoi, M. 2009. Assessment of the effects of Companion Modeling for sustainable labor, land and water management: Application to integrated farming in the Lam Dome Yai watershed, Ubon Ratchathani province. Master of Science in Integrated Farming System. Integrated farming program, Faculty of Agriculture Ubon Rajathanee University.
- Thongpao, T. (2005, May 5). Farmers face collateral damage. *Bangkok Post*. 3.
- Tidwell, V.C., Passell, H.D., Conrad, S.H., and Thomas, R.P. 2004. System dynamics modeling for community-based water planning: Application to the Middle Rio Grande. *Aquatic Sciences - Research Across Boundaries*. 66: 357-372.

- Trébuil, G. (2008). Companion Modelling for Resilient and Adaptive Social Agro-Ecological Systems in Asia. Proceedings of National Agricultural System Seminar: 90-104. 27-28 May 2008, International Conference Center, The Empress Hotel, Chiang Mai. Nopburi Print.
- Trébuil, G., and Dufumier, M. 1993. Regional agrarian systems and sustainability of agricultural production systems in Thailand. Asian Farming Systems Association. 4: 557-568.
- Trébuil, G., Kam, S.P., Turkelboom, F., and Shinawatra, B. (1997). System diagnoses at field, farm and watershed levels in diversifying upland agroecosystems: towards comprehensive solutions to farmers' problems. In: Teng (ed.) Applications of Systems Approaches at the Farm and Regional Levels, pp: 99-114. UK: Kluwer Academic Publisher.
- Trébuil, G., Shinawatra-Ekasingh, B., Bousquet, F., and Thong-ngam, C. (2002). Multi-agent systems companion modeling for integrated watershed management: A Northern Thailand Experience. Proceedings of 3rd International Conference on Montane Mainland Southeast Asia (MMSEA 3): 14. 25-28 August 2000, Lijiang, Yunnan, China.
- Troitzsch, K.G. 2004. Validating simulation models. Proceedings of the 18th European Simulation Multiconference. SCS Europe.
- United Nations. 2001. Atlas of mineral resources of the ESCAP region: Mineral resources of Thailand. United Nations Publication.
- van Asselt, B.A.M., and Rijkens-Klomp, N. 2002. A look in the mirror: reflection on participation in integrated assessment from a methodological perspective. Global Environmental Change. 12: 167-184.
- van Asselt, B.A.M., Mellors, J., Rijkens-Klomp, N., Greeuw, C.H.S., Molendijk, G.P.K., Beers, P.J., and Notten, P. 2001. Building Blocks for Participation in Integrated Assessment: A review of participatory methods. The International Centre for Integrative Studies (ICIS): working paper I01-E003 ICIS, Maastricht, The Netherlands.
- Van den Belt, M. (2004). Mediated modeling: a system dynamics approach to environmental consensus building. Washington: Island press.

- Vennix, J.A.M. (1996). Group model building: facilitating team learning using system dynamics Chichester, UK: John Wiley & Sons Ltd.
- Vityakon, P., Subhadhira, S., Limpinuntana, V., Srila, S., Trelo-ges, V., and Sriboonlue, V. 2004. From forest to farmfield: Changes in land use in undulating terrain of Northeast Thailand at different scales during the past century. Southeast Asian Studies. 41: 444-472.
- Voinov, A., and Bouman, R.M.J. 2004. Ecological modeling for conservation and management training course. Faculty of Science, Chulalongkorn University, Bangkok, Thailand.
- Voinov, A., and Gaddis, E.J.B. 2008. Lessons for successful participatory watershed modeling: A perspective from modeling practitioners. Ecological Modelling. 216: 197-207.
- Wade, L.J. (1999). Critical characteristics for rainfed rice environments and implications for rice improvement. In: Ito, O., O'Toole, J.C. and Hardy, B. (eds.), Genetic Improvement of Rice for Water-limited Environments, pp: 1-10. Los Baños, Laguna, Philippines.
- Wade, L.J., Fukai, S., Samson, B.K., Ali, A., and Mazid, M.A. 1999. Rainfed lowland rice: physical environment and cultivar requirements. Field Crops Research. 64: 3-12.
- Wagener, T., Liu, Y., Stewart, S., Hartman, H., and Mahmoud, M. (2006). Imagine - Scenario Development for Environmental Impact Assessment Studies. Proceedings of the iEMSs Third Biennial Meeting, "Summit on Environmental Modelling and Software": 16. July 2006, Burlington, USA
- Wainwright, J., and Mulligan, M. (2004). Environmental modeling: finding simplicity in complexity. In: Wainwright, J. and Mulligan, M. (eds.), Modeling and model building, pp: 5-68. Chippenham, Wiltshire, UK: Antony Rowe Ltd.
- Walkerden, G. 2006. Adaptive management planning projects as conflict resolution processes. Ecology and Society. 11: 48.
- Walters, C.J. (1986). Adaptive Management of Renewable Resources. New York: McGraw Hill.

- Wigzell, S., and Setboonsarng, S. 1995. The diffusion of integrated farming in Northeast Thailand. TEI quarterly Environment Journal. 3: 14-40.
- Winz, I., and Brierley, G. (2007). Participatory Methods in Environmental System Dynamics Projects. Proceedings of The 2007 International Conference of the System Dynamics Society and 50th Anniversary Celebration: 21. 29 July - 2 August, 2007, Boston, Massachusetts, USA.
- Wirojanagud, P., and Sriwaoramat, S. 2000. Discharge characteristics of watersheds in northeast Thailand. Research report, Water resource research center, Faculty of Engineering, Ubon Ratchathani University, Ubon Ratchathani.
- Woodhill, J., and Röling, N.G. (1998). The second wing of the eagle: the human dimension in learning our way to more sustainable futures. In: Roling, N.G. and Wagemaker, M.A.E. (eds.), Facilitating sustainable agriculture: participatory learning and adaptive management in times of environmental uncertainty. pp: 46-69. Cambridge, United Kingdom: Cambridge University Press.
- Wooldridge, M. (1999). Intelligent agents. In: Weiss, G. (ed.) Multi-agent systems: a modern approach to distributed artificial intelligence, pp: 27-78. Boston: MIT Press.
- Zeigler, R.S., and Puckridge, D.W. 1995. Improving sustainable productivity in rice-based rainfed lowland system of South and Southeast Asia. GeoJournal. 35: 307-324.

APPENDICES

Appendix A: Materials used to produce GIS maps in this study.

Year	1973		1984	1989	1991	1995	1996	1999		2000	2002	
Types	Aerial photos	Landsat MSS	Aerial photos	Landsat TM	Land use map	Land use map	Aerial photos	Topomap (raster)	Topomap (vector)	Landsat ETM	Land use map	Landsat ETM
Date	20-Dec	3-Jan	18-Dec	25-Dec			28-Nov			31-Dec		20-Feb
Materials	pictures and scanned images	digital: 4 bands	pictures and scanned images	digital: 7 bands	digital file	digital file	pictures and scanned images	papers and digital files	digital file	digital: 7 bands	digital file	digital: 7 bands
Scale	1:40,000	60 x 60 sq.m.	1:40,000	30 x 30 sq.m.			1:50,000	1:50,000		30 x 30 sq.m.		30 x 30 sq.m.
File extension	GeoTIFF	GeoTIFF	GeoTIFF	GeoTIFF	ArcInfo	ArcInfo	GeoTIFF	GeoTIFF	dgn	GeoTIFF	ArcInfo	GeoTIFF
Sources	RTSD	http://glcfa.pp.umiacs.umd.edu	RTSD	http://glcfa.pp.umiacs.umd.edu	LDD	DEQP	RTSD	RTSD	RTSD	http://glcfa.pp.umiacs.umd.edu	UBU	UBU

Notes:

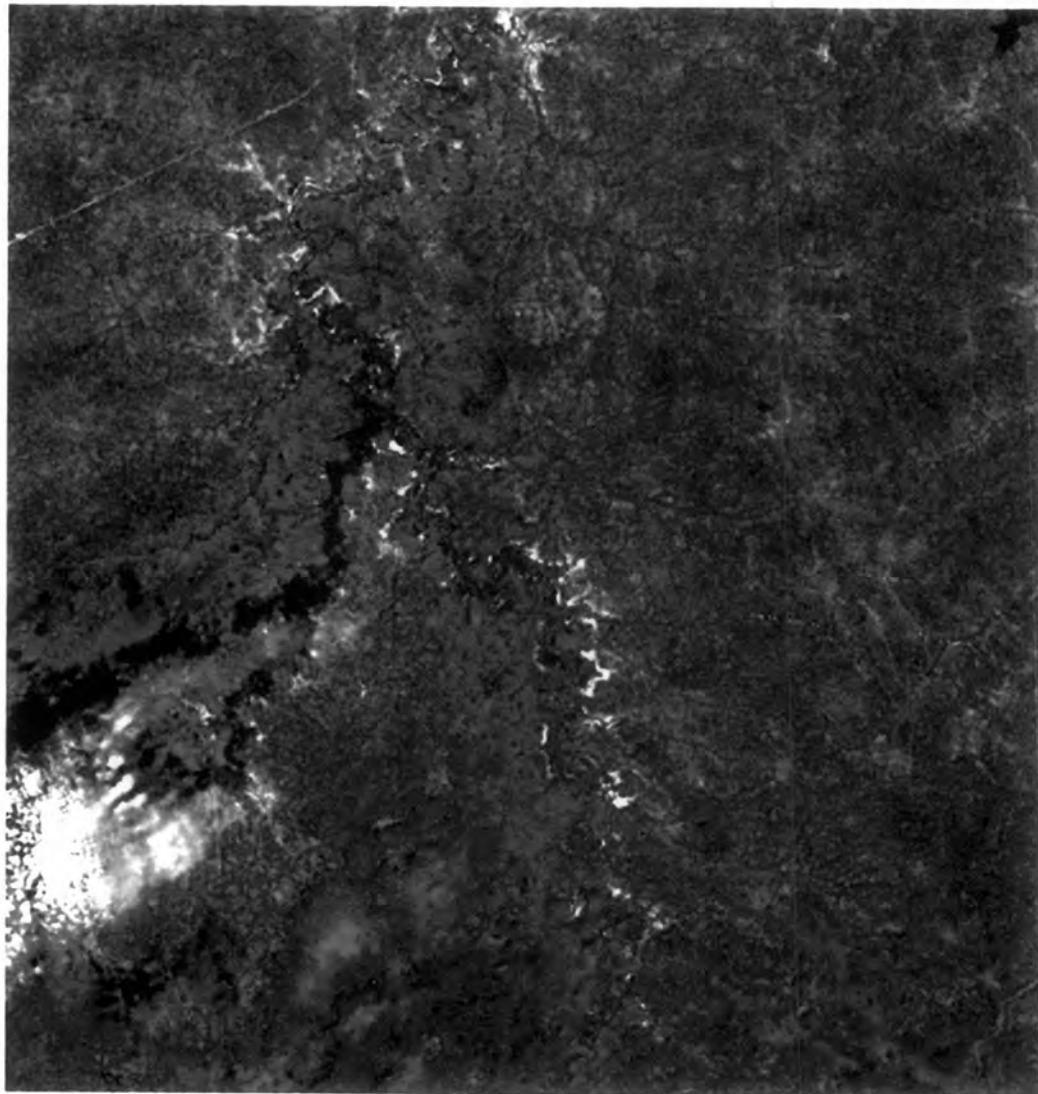
RTSD: Royal Thai Survey Department, Royal Thai Army, Ministry of Defence

DEGP: Department of Environmental Quality Promotion, Ministry of Natural Resources and Environment.

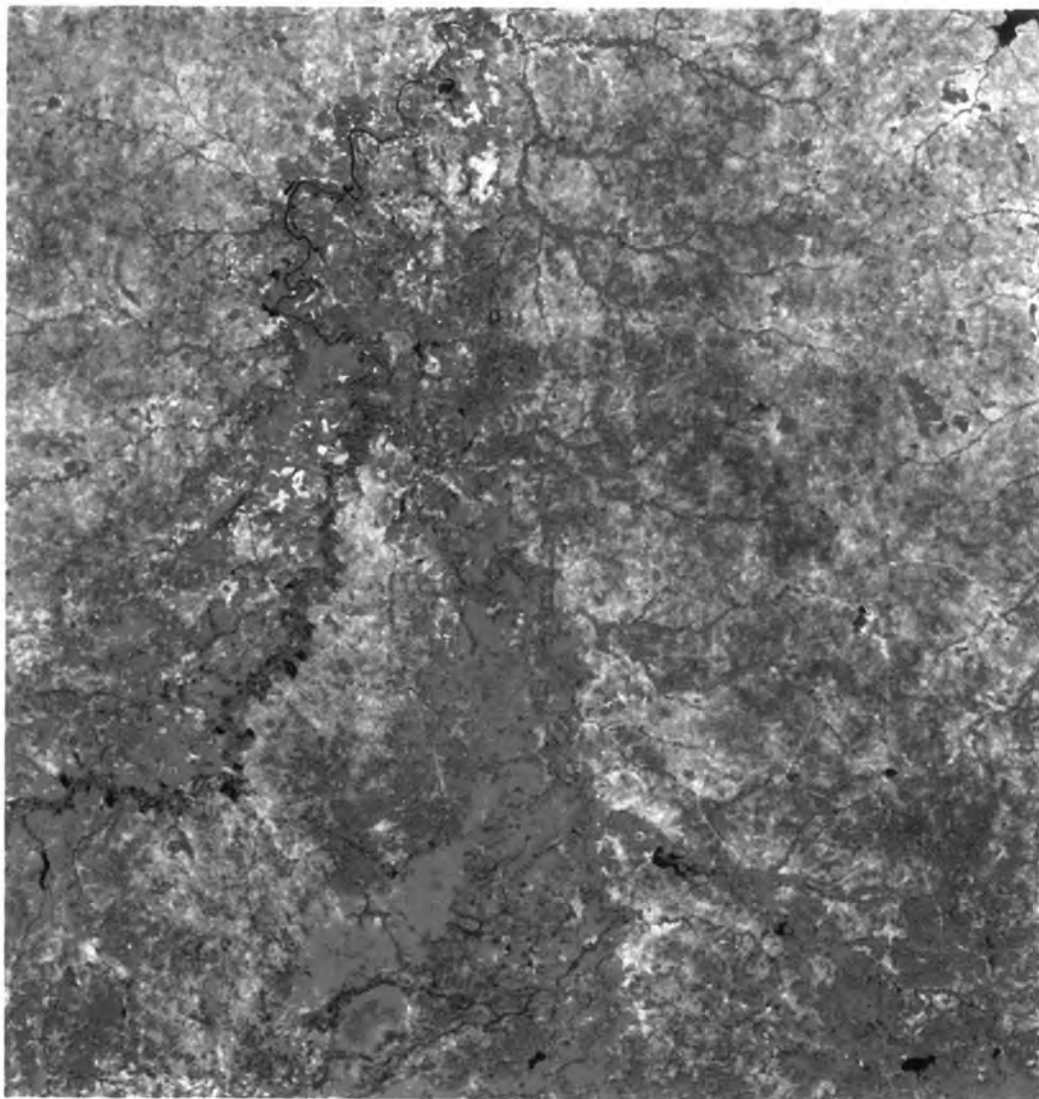
LDD: Land Development Department: Ministry of Agriculture and Cooperatives

UBU: Ubon Rajathanee University

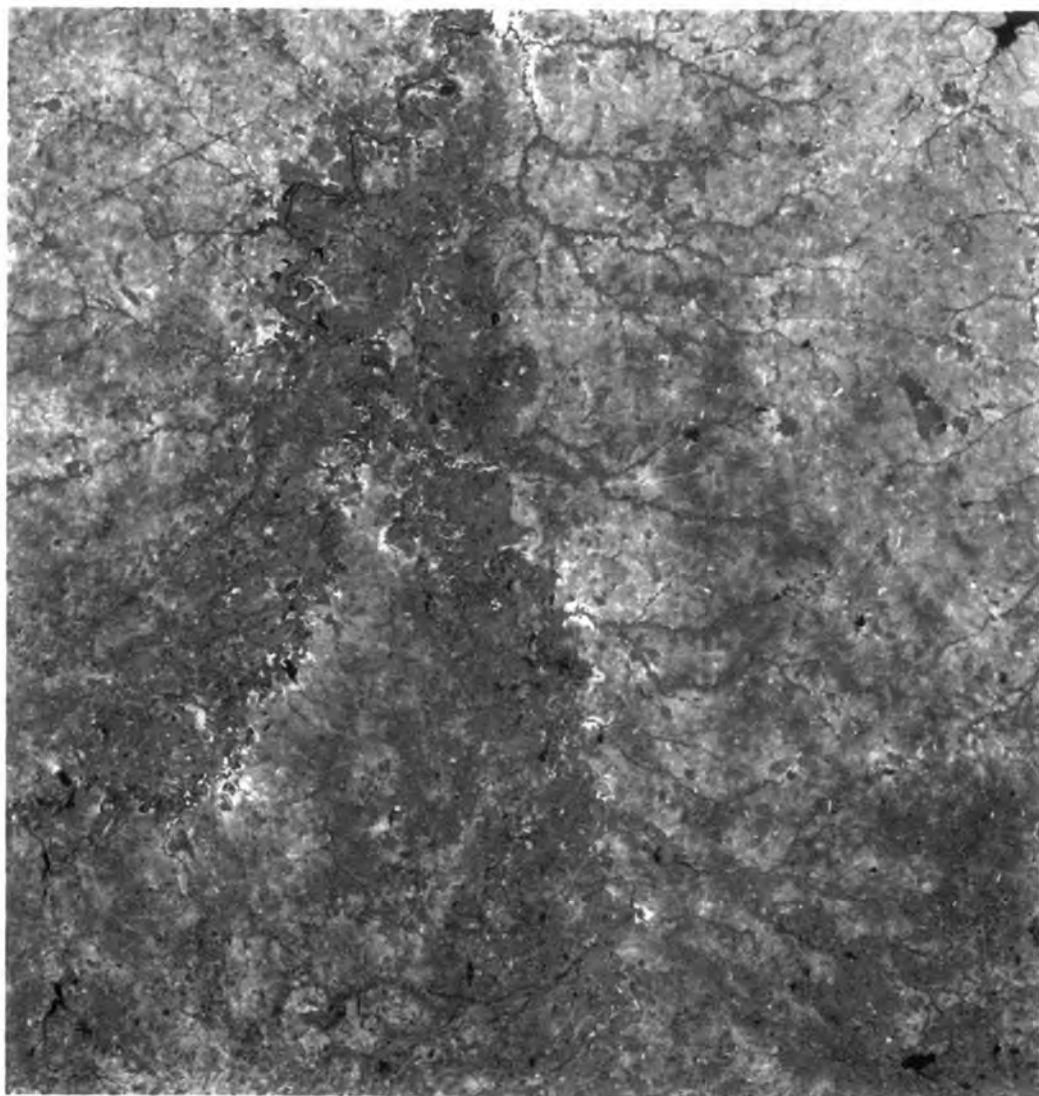
Appendix B: Standard false colour composite band 1, 2, 4 of the study site based on the Landsat MSS image taken on 3 January 1973.



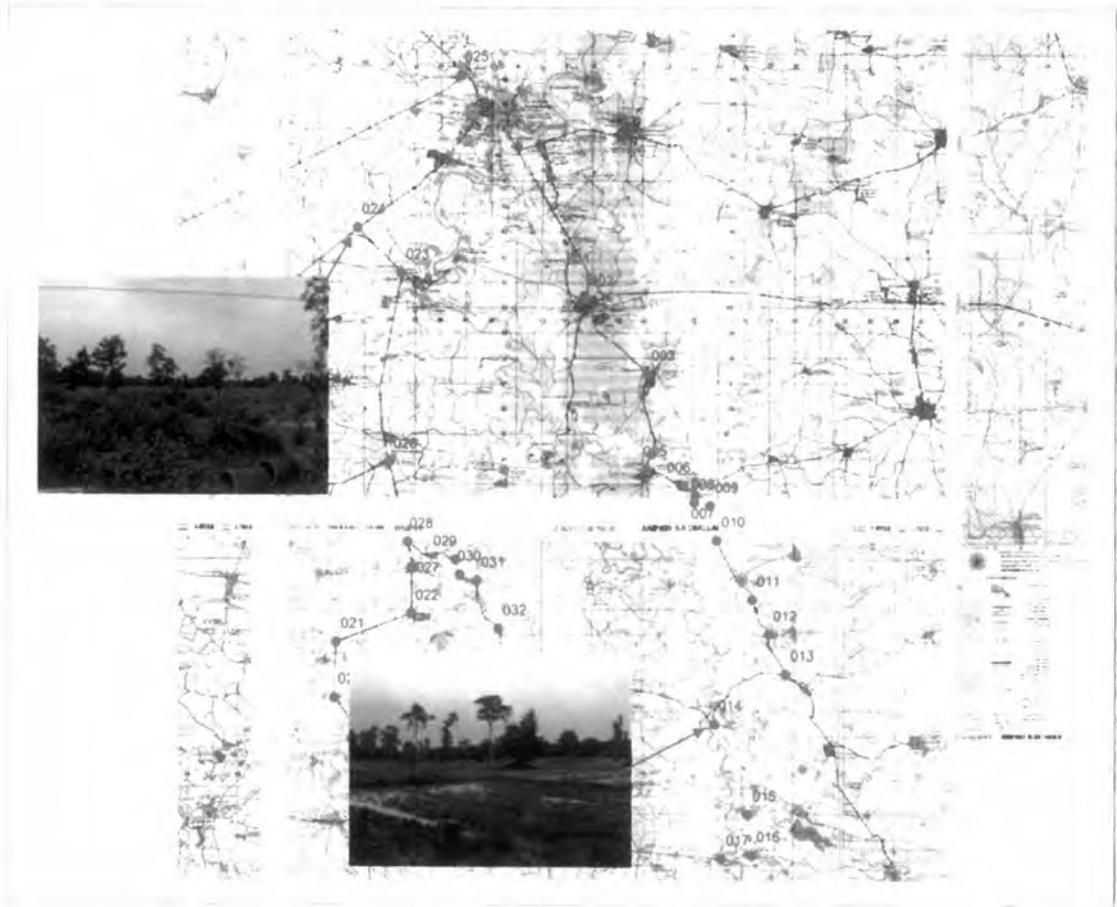
Appendix C: Standard false colour composite band 2, 3, 4 of the study site based on the Landsat TM image taken on 25 December 1989.



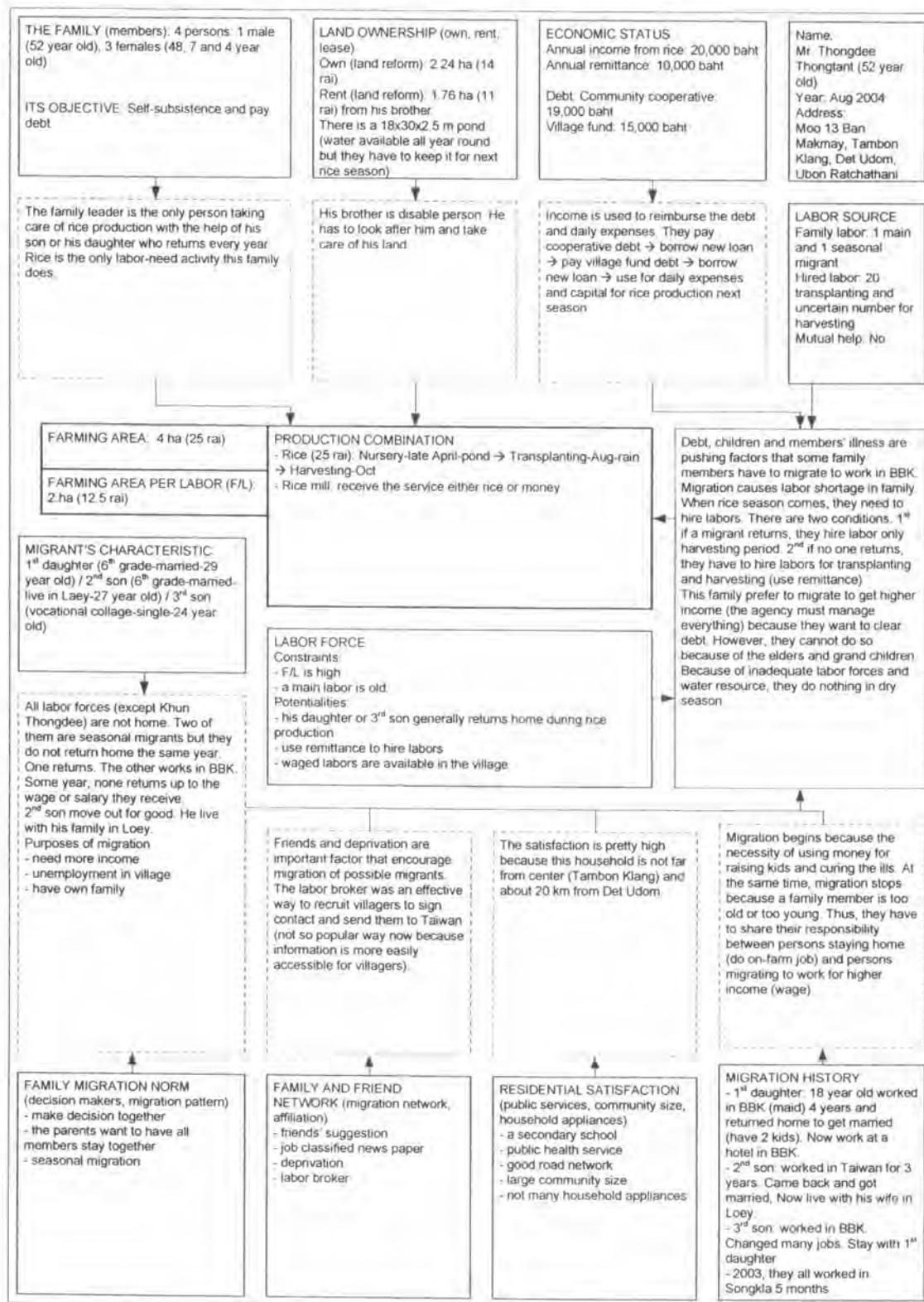
Appendix D: Standard false colour composite band 2, 3, 4 of the study site based on the Landsat ETM image taken on 20 February 2002.



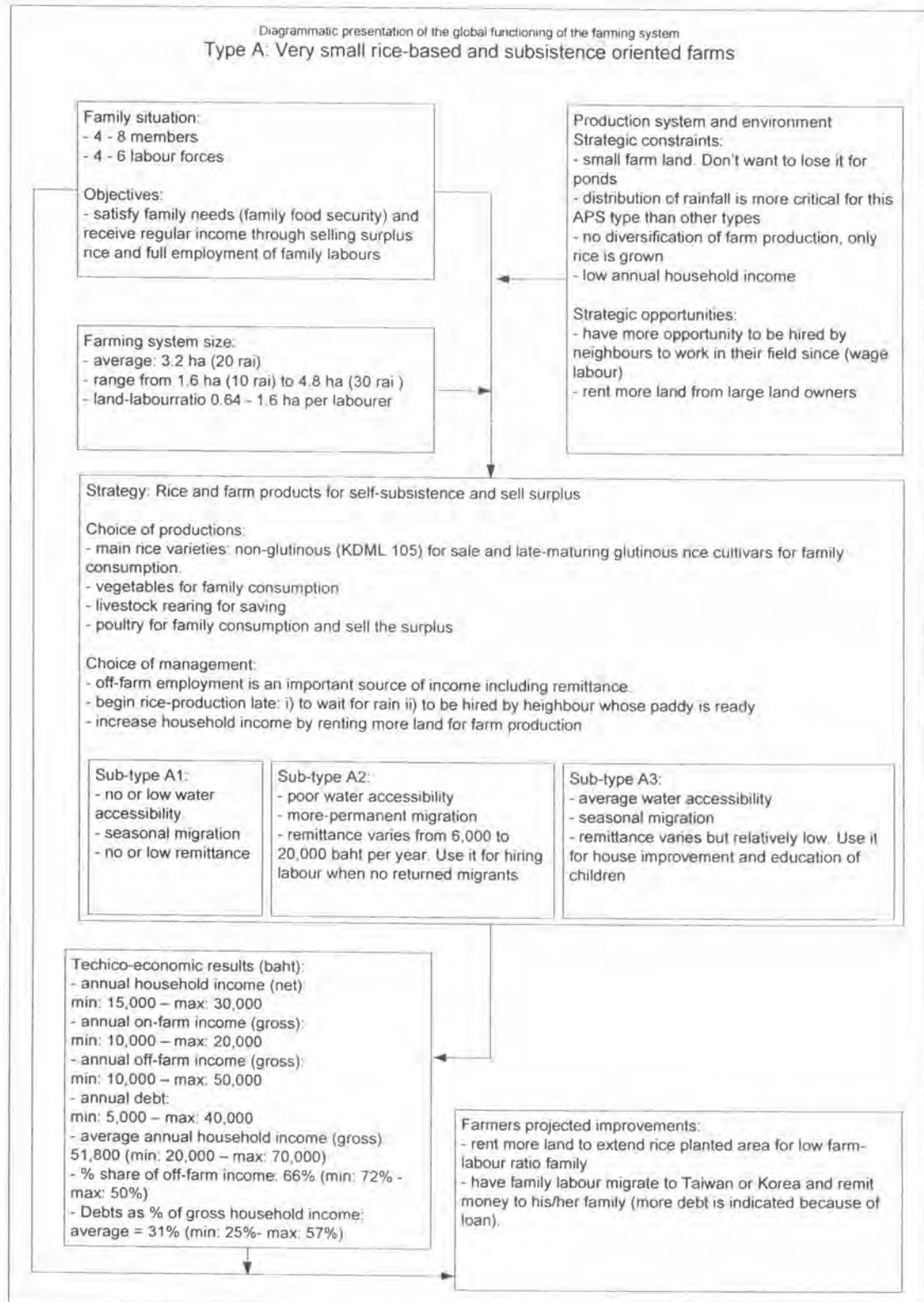
Appendix E: Ground truth and GPS operation carried out in the central part of Lam Dome Yai watershed on 11-12 August 2005.



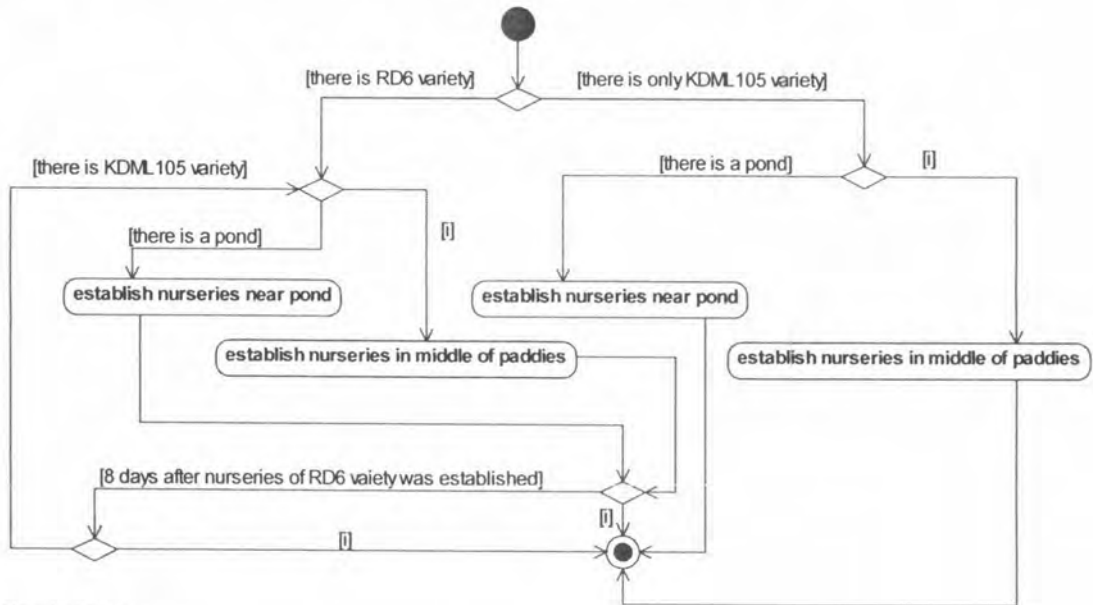
Appendix F: An example of determining factors and conditions of the combination of productions completed after the farm survey in April and August 2004.



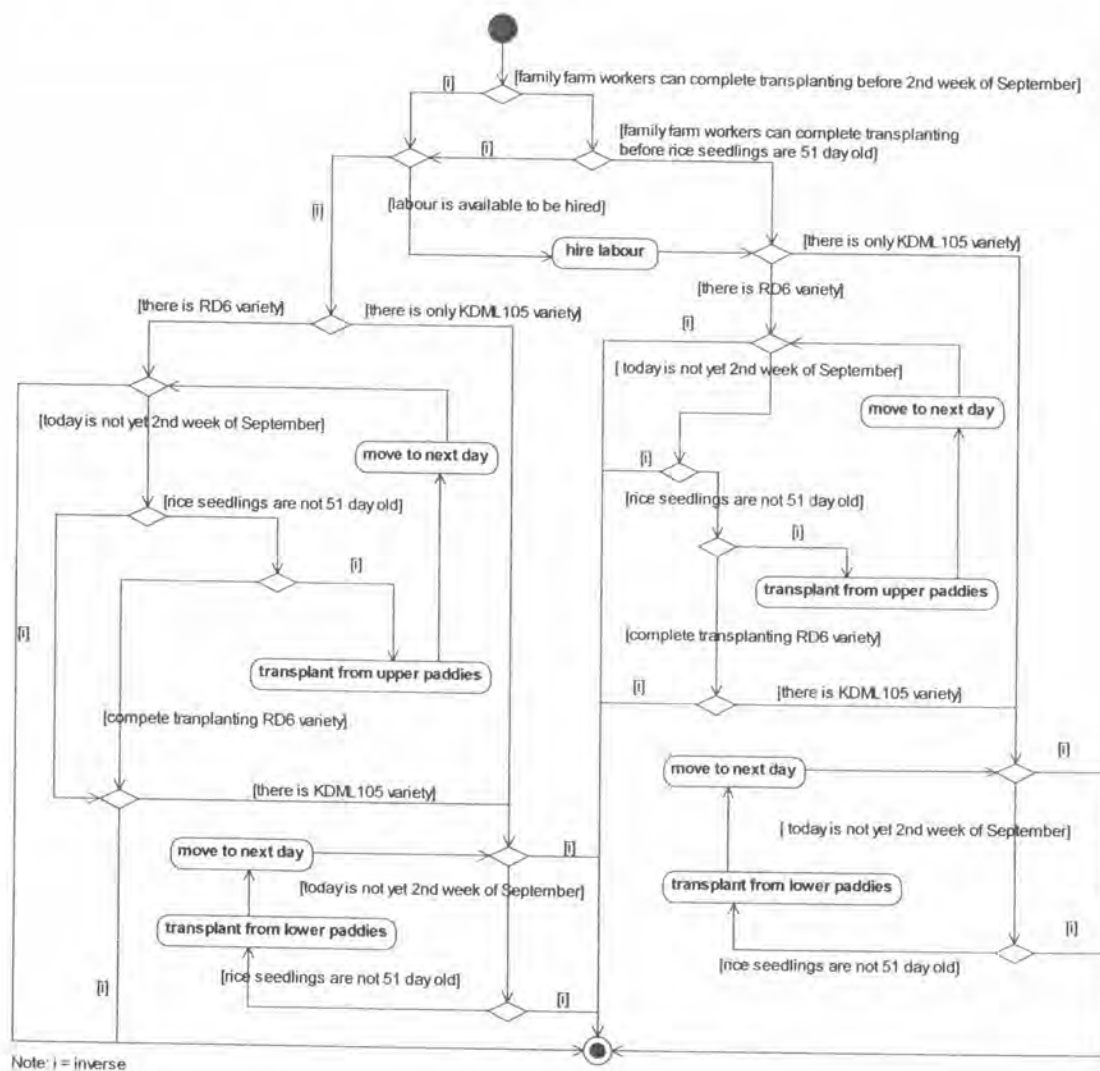
Appendix G: An example of diagrammatic presentation of the global functioning of farming unit.



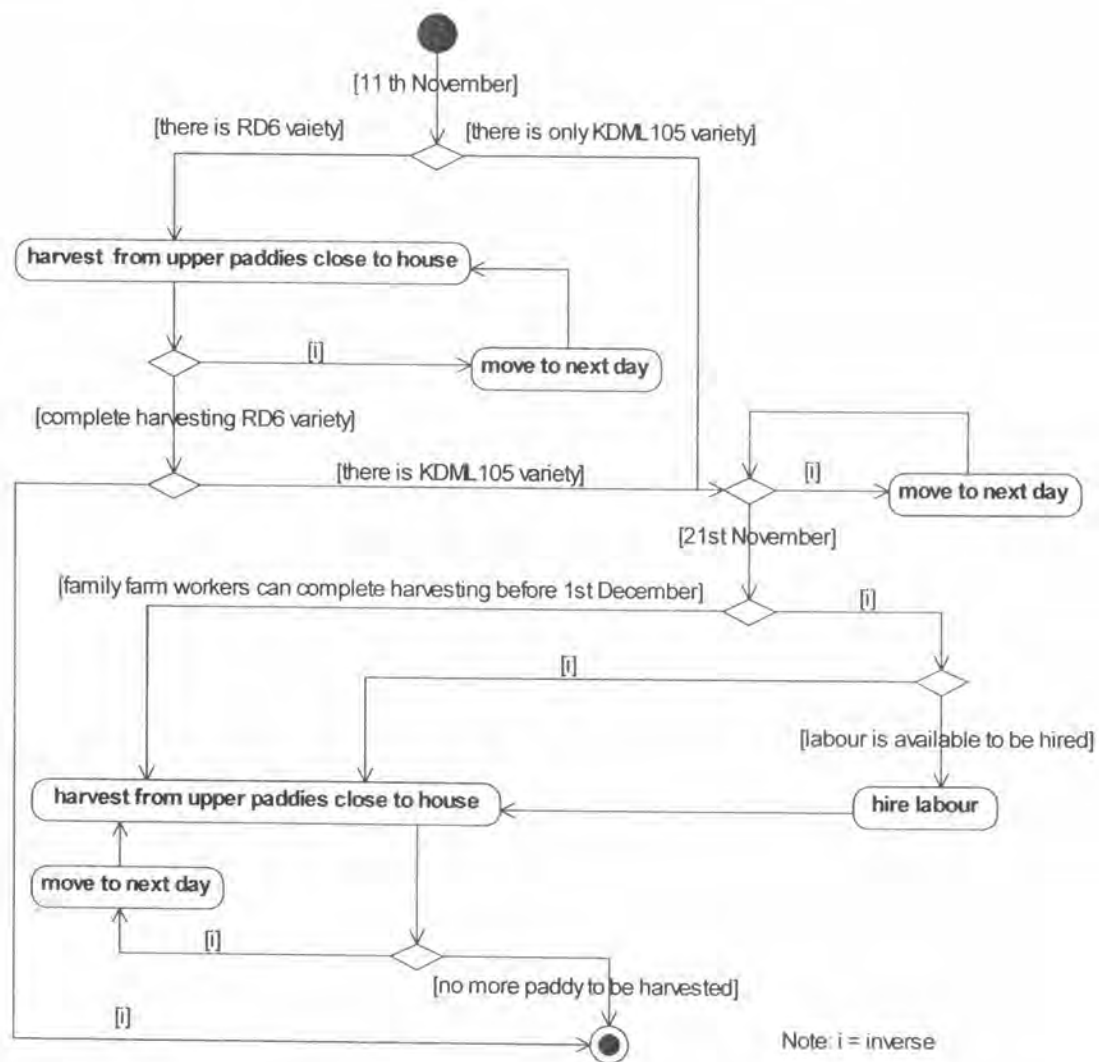
Appendix H: Algorithm representing household decision to locate nursery for RD6 and/or KDM105 in a UML activity diagram.



Appendix I: Algorithm representing household decision to transplant RD6 and/or KDML105 in a UML activity diagram.



Appendix J: Algorithm representing household decision to transplant RD6 and/or KDML105 in a UML activity diagram.



BIOGRAPHY

Mr. Warong NAIVINIT

Date of birth: 26 August 1969

Place of birth: Kanchanaburi, Thailand

Education:

1988- 1992: Kasetsart University Bangkok, Thailand. Bachelor of Science in Agriculture (Horticulture).

1994-1997: The University of Oklahoma, OK, USA. Master of Landscape Architecture (M.L.A.).

Professional experience:

2003 – Present: Doctoral candidate of co-advisor program between Faculty of Science, Chulalongkorn University and Département de géographie, Université Paris X – Nanterre

1997 – 2003: Ubon Ratchathani University Ubon Ratchathani, Thailand

Assistant Dean for Facility Resource and Environmental Management of Faculty of Agriculture, June 2001-2003.

Full-time teaching in Landscape gardening, Principle of art for landscape design, Landscape design 1, and Digital design studio

Publications:

- Naivinit W., and Trébuil G. 2004. Interactions between water use and labour migrations in northeast Thailand: Context, methodology, and preliminary findings. 4th International and Interdisciplinary Seminar of the Common Program on Irrigated System (PCSI). 25-26 November 2004. 12 p.

- Naivinit W. 2005. Companion modelling to understand interactions between land & water use and labour migration in lower northeast Thailand: context, methodology, and preliminary findings. the International Conference on Simulation and Modeling (SIMMOD) 2005, Bangkok, Thailand. Pp 444-452.

- Naivinit W., and Trébuil G. 2006. Using Companion modeling to understand interactions between water dynamics and labor migrations in lower Northeast Thailand. 3rd APHW Conference. 16-18 October 2006, Bangkok, Thailand. 9 p.

- Naivinit W., Le Page C., Thongnoi M., Trébuil G., and Sribombot N. 2007. Use of participatory modelling to validate and build a multi-agent system model regarding rainfed lowland rice and labour management in lower northeast Thailand. 2nd International Conference on Asian Simulation and Modeling (ASIMMOD) 2007. 9-11 January 2007, Chiang Mai, Thailand. 6 p.

- Naivinit W., Trébuil G., Thongnoi M., and Le Page C. 2008. Collaborative Multi-Agent Modelling to improve Farmers' Adaptive Capacity to Manage Water and Migrations Dynamics in Northeast Thailand. 13th IWRA World Water Congress 2008. 1-4 September 2008, Montpellier, France. 15 p.

- Naivinit W., Le Page C., Thongnoi M., and Trébuil G. 2009. Participatory agent-based modeling and simulation of rice farming in the rainfed lowlands of Northeast Thailand. In: 3rd International Conference on Asian Simulation and Modeling (ASIMMOD) 2009. 22-23 January 2009, Miracle Grand Conventional Hotel. Pp 370-379.

Working address:

Lecturer and researcher at Department of Horticulture, Faculty of Agriculture, Ubon Rajathanee University, Warinchamrap, Ubon Ratchathani 34190, Thailand

