

การวิเคราะห์การแสดงออกของยีนและการผลิตรีคอมบิแนนต์ดีเอ็นเอของข้าว *Oryza sativa* L.

นางสาวกมลวรรณ วีรวานิช



จุฬาลงกรณ์มหาวิทยาลัย

CHULALONGKORN UNIVERSITY

บทคัดย่อและแฟ้มข้อมูลฉบับเต็มของวิทยานิพนธ์ตั้งแต่ปีการศึกษา 2554 ที่ให้บริการในคลังปัญญาจุฬาฯ (CUIR)

เป็นแฟ้มข้อมูลของนิสิตเจ้าของวิทยานิพนธ์ ที่ส่งผ่านทางบัณฑิตวิทยาลัย

The abstract and full text of theses from the academic year 2011 in Chulalongkorn University Intellectual Repository (CUIR)

are the thesis authors' files submitted through the University Graduate School.

วิทยานิพนธ์นี้เป็นส่วนหนึ่งของการศึกษาตามหลักสูตรปริญญาวิทยาศาสตรมหาบัณฑิต

สาขาวิชาชีวเคมีและชีววิทยาโมเลกุล ภาควิชาชีวเคมี

คณะวิทยาศาสตร์ จุฬาลงกรณ์มหาวิทยาลัย

ปีการศึกษา 2559

ลิขสิทธิ์ของจุฬาลงกรณ์มหาวิทยาลัย

GENE EXPRESSION ANALYSIS AND RECOMBINANT DEFENSINS PRODUCTION OF RICE

*Oryza sativa* L.

Miss Kamonwan Weerawanich



A Thesis Submitted in Partial Fulfillment of the Requirements  
for the Degree of Master of Science Program in Biochemistry and Molecular Biology

Department of Biochemistry

Faculty of Science

Chulalongkorn University

Academic Year 2016

Copyright of Chulalongkorn University

Thesis Title	GENE EXPRESSION ANALYSIS AND RECOMBINANT DEFENSINS PRODUCTION OF RICE <i>Oryza sativa</i> L.
By	Miss Kamonwan Weerawanich
Field of Study	Biochemistry and Molecular Biology
Thesis Advisor	Assistant Professor Supaart Sirikantaramas, Ph.D.
Thesis Co-Advisor	Assistant Professor Waranyoo Phoolcharoen, Ph.D.

---

Accepted by the Faculty of Science, Chulalongkorn University in Partial  
Fulfillment of the Requirements for the Master's Degree

.....Dean of the Faculty of Science  
(Associate Professor Polkit Sangvanich, Ph.D.)

THESIS COMMITTEE

.....Chairman  
(Assistant Professor Kanoktip Packdibamrung, Ph.D.)

.....Thesis Advisor  
(Assistant Professor Supaart Sirikantaramas, Ph.D.)

.....Thesis Co-Advisor  
(Assistant Professor Waranyoo Phoolcharoen, Ph.D.)

.....Examiner  
(Professor Aran Incharoensakdi, Ph.D.)

.....External Examiner  
(Assistant Professor Anchanee Kubera, Ph.D.)

กมลวรรณ วีรวานิช : การวิเคราะห์การแสดงออกของยีนและการผลิตรีคอมบิแนนต์ดีเฟนซินของข้าว *Oryza sativa* L. (GENE EXPRESSION ANALYSIS AND RECOMBINANT DEFENSINS PRODUCTION OF RICE *Oryza sativa* L.) อ.ที่ปรึกษาวิทยานิพนธ์หลัก: ผศ. ดร. ศุภอรจรจ ศิริกันทรมาศ, อ.ที่ปรึกษาวิทยานิพนธ์ร่วม: ผศ. ดร. วรัญญ พูลเจริญ, 89 หน้า.

เปปไทด์ต้านจุลชีพเป็นเปปไทด์สายสั้น ๆ ที่โดยทั่วไปประกอบด้วยกรดอะมิโนน้อยกว่า 100 ตัว โดยมีกรดอะมิโนซิสเทอีนเป็นจำนวนมาก เปปไทด์เหล่านี้มีคุณสมบัติการต้านเชื้อแบคทีเรียและรา ด้วยกลไกการเข้าทำลายเยื่อหุ้มเซลล์ของจุลชีพ ดีเฟนซินเป็นหนึ่งในกลุ่มเปปไทด์ต้านจุลชีพในพืช ที่สามารถพบได้ในข้าว *Oryza sativa* L. ก่อนหน้านี้ ดีเฟนซิน 7 และดีเฟนซิน 8 จากข้าวที่ผลิตในแบคทีเรียสามารถออกฤทธิ์ยับยั้งการเจริญของจุลชีพก่อโรคพืช ในงานวิจัยนี้จึงโคลนยีนทั้งสองและวิเคราะห์รูปแบบการแสดงออกโดยใช้ quantitative RT-PCR ในข้าวหอมมะลิไทย *Oryza sativa* L. ssp. *indica* cv. KDML105 แล้วนำมาเปรียบเทียบกับข้าวญี่ปุ่น *Oryza sativa* L. ssp. *japonica* แม้ว่าลำดับนิวคลีโอไทด์ของทั้งสองยีนในข้าวสองสายพันธุ์เหมือนกัน 100 เปอร์เซ็นต์ และมีรูปแบบการแสดงออกที่เหมือนกันในทุกช่วงอายุ แต่ระดับการแสดงออกในแต่ละอวัยวะแตกต่างกัน เมื่อใบข้าวมีการติดเชื้อของ *Xanthomonas oryzae* pv. *oryzae* ยีนดีเฟนซินทั้งสองจะมีการเพิ่มระดับการแสดงออกในวันที่ 8 หลังจากการติดเชื้อ แสดงถึงความเกี่ยวข้องกับการต้านเชื้อจุลชีพก่อโรคของยีนดีเฟนซิน นอกจากนี้ ผลจากการวิเคราะห์ *in silico* แสดงให้เห็นว่าความเครียดที่เกิดจากสิ่งไม่มีชีวิต ได้แก่ ความแห้ง ความเย็น การดูดซึมน้ำ การขาดออกซิเจน และการขาดน้ำ ส่งผลกระทบต่อระดับการแสดงออกของยีนทั้งสองเมื่อดีเฟนซิน 7 และ 8 ถูกเชื่อมต่อกับ GFP สามารถพบโปรตีนได้ในส่วนภายนอกเซลล์ อย่างไรก็ตามรีคอมบิแนนต์ดีเฟนซินไม่สามารถตรวจพบได้จากส่วนของอาหารเหลวที่ใช้เลี้ยงรากลอยของ *Nicotiana benthamiana* และเซลล์แขวนลอย BY-2 ของยาสูบที่มีการแสดงออกของยีนดีเฟนซิน ผู้วิจัยจึงได้ทำให้เกิดการแสดงออกเพียงชั่วคราวของดีเฟนซินในใบ *N. benthamiana* โดยใช้เทคนิค agroinfiltration และทดสอบฤทธิ์ต้านเชื้อจุลชีพของโปรตีนนี้ในพืช แม้ว่าโปรตีนที่ผลิตได้จากใบจะมีปริมาณต่ำแต่รีคอมบิแนนต์ดีเฟนซินทั้งสองมีฤทธิ์ในการยับยั้งเชื้อก่อโรคพืช *Xanthomonas campestris* pv. *glycines* ในเซลล์พืชได้ จากผลการทดลองแสดงให้เห็นว่าเปปไทด์เหล่านี้อาจถูกนำมาใช้ประโยชน์ในการควบคุมโรคพืชและ *N. benthamiana* สามารถใช้เป็นเจ้าบ้านทางเลือกในการคัดเลือกเปปไทด์ต้านจุลชีพอื่น ๆ ได้

ภาควิชา ชีวเคมี

สาขาวิชา ชีวเคมีและชีววิทยาโมเลกุล

ปีการศึกษา 2559

ลายมือชื่อนิสิต .....

ลายมือชื่อ อ.ที่ปรึกษาหลัก .....

ลายมือชื่อ อ.ที่ปรึกษาร่วม .....

# # 5771909223 : MAJOR BIOCHEMISTRY AND MOLECULAR BIOLOGY

KEYWORDS: ANTIMICROBIAL PEPTIDES / DEFENSIN / ORYZA SATIVA L. / NICOTIANA BENTHAMIANA / PLANT-BASED SYSTEMS

KAMONWAN WEERAWANICH: GENE EXPRESSION ANALYSIS AND RECOMBINANT DEFENSINS PRODUCTION OF RICE *Oryza sativa* L.. ADVISOR: ASST. PROF. SUPAART SIRIKANTARAMAS, Ph.D., CO-ADVISOR: ASST. PROF. WARANYOO PHOOLCHAROEN, Ph.D., 89 pp.

Antimicrobial peptides (AMPs) are small cysteine-rich peptides which generally contain less than 100 amino acid residues. They have a non-specific antimicrobial activity against bacteria and fungi by invading their cell membranes. Defensin (DEF) represents a group of AMPs in plants including rice *Oryza sativa* L. Previously, rice DEF7 (OsDEF7) and rice DEF8 (OsDEF8) were heterologously produced in bacteria exhibiting a growth inhibitory effect against several phytopathogens. In this study, both DEFs were cloned and analysed for gene expression patterns using quantitative RT-PCR in Thai jasmine rice, *Oryza sativa* L. ssp. *indica* cv. KDML105 comparing to the results of those Japanese rice *Oryza sativa* L. ssp. *japonica*. Although the nucleotide sequences of both genes in the two cultivars show 100% identity and similar gene expression pattern at the examined developmental stages was observed, their expression levels were shown to be different between organs. Upon *Xanthomonas oryzae* pv. *oryzae* infection in rice leaves, both *OsDEFs* showed high upregulation at 8 days post-infection suggesting their involvement in pathogen defense. In addition, *in silico* analysis also demonstrated that the expression levels of these two *OsDEFs* were affected by abiotic stress including drought, cold, imbibition, anoxia, and dehydration. Using GFP fusion approach, *OsDEFs* were demonstrated to localize to the extracellular compartment. However, the recombinant *OsDEFs* cannot be detected in culture medium when expressed in the hairy roots of *Nicotiana benthamiana* and tobacco BY-2 suspension cells. Subsequently, transiently expression of these peptides in *N. benthamiana* leaves was performed by agroinfiltration and *in planta* inhibitory activity of these proteins was tested. Even though the low levels of these proteins were detected in the leaves, both recombinant proteins exhibited *in planta* inhibitory activity against phytopathogens, *Xanthomonas campestris* pv. *glycines*. These results suggested that these peptides might be exploited further for disease control and *N. benthamiana* could be used as an alternative host for screening other antimicrobial peptides.

Department: Biochemistry Student's Signature .....

Field of Study: Biochemistry and Molecular Biology Advisor's Signature .....

Biology Co-Advisor's Signature .....

Academic Year: 2016

## ACKNOWLEDGEMENTS

I would like to express my sincere appreciation to my advisor, Assistant Professor Supaart Sirikantaramas, Ph.D. for his guidance, continuous support, and encouragement throughout my Master's course. He taught me not only scientific knowledge but also self-discipline, research skill and scientific communications. I also thank my co-advisor, Assistant Professor Waranyoo Phoolcharoen, Ph.D. for her guidance and encouragement. My work would not be successful without them.

I specially thank Professor Julian K-C Ma, Ph.D. for giving me an opportunity to perform some parts of my experiment at Infection and Immunity Institute, St George's university of london, London, UK. I also thank the members at that Institute for their helps and guidances.

My deep appreciation would go to the Department of Biochemistry, Faculty of Science, Chulalongkorn University and particularly to those of my colleagues, Room 708 members and all alliances of the department who have given me beneficial suggestions to improve and develop my knowledge, skills and background in Biochemistry and other related fields.

I am thankful to Assistant Professor Kanoktip Packdibamrung, Ph.D., Professor Aran Incharoensakdi, Ph.D., and Assistant Professor Anchanee Kubera, Ph.D. for being my thesis committee, valuable comments and constructive suggestions.

Chulalongkorn University Graduate Scholarship to Commemorate the 72nd Anniversary of His Majesty King Bhumibol Adulyadej, the 90th Anniversary of Chulalongkorn University fund (Ratchadaphiseksomphot Endowment Fund), and Overseas Research Experience Scholarship for Graduate Student are gratefully acknowledged.

Finally I am grateful to my family, especially my parents for their love, encouragement and support for my whole life.

## CONTENTS

	Page
THAI ABSTRACT .....	iv
ENGLISH ABSTRACT .....	v
ACKNOWLEDGEMENTS .....	vi
CONTENTS .....	vii
LIST OF FIGURES .....	xii
LIST OF TABLES .....	xiii
CHAPTER I INTRODUCTION .....	1
1.1 Statement of problem.....	1
1.2 Antimicrobial peptide (AMP).....	2
1.2.1 Types and structures of plant AMP.....	3
1.2.1.1 Defensin (DEF).....	3
1.2.1.2 Thionin (THION).....	4
1.2.1.3 Lipid transfer protein (LTP).....	4
1.2.1.4 Hevein-type peptide .....	4
1.2.1.5 Knottin-type peptide.....	4
1.2.1.6 Cyclotide.....	5
1.2.1.7 Snakin .....	5
1.2.2 Mechanism of AMP .....	7
1.2.2.1 Barrel-stave model .....	7
1.2.2.2 Carpet model.....	8
1.2.2.3 Toroidal model.....	9
1.2.3 Subcellular localization of AMP.....	9

	Page
1.2.4 Defensin (DEF) .....	10
1.3 Rice DEFs ( <i>OsDEF7</i> and <i>OsDEF8</i> ).....	15
1.4 Plant-based recombinant protein production .....	17
1.4.1 Suspension cultures of plant cells.....	17
1.4.2 Hairy root cultures .....	18
1.4.3 Transient expression.....	19
1.5 <i>In planta</i> activity of plant AMP .....	19
CHAPTER II MATERIALS AND METHODS .....	20
2.1 Materials.....	20
2.1.1 Equipments.....	20
2.1.2 Chemicals.....	21
2.1.3 Enzymes .....	23
2.1.4 Plasmids.....	24
2.1.5 Molecular kits .....	24
2.1.6 Miscellaneous.....	24
2.1.7 Antibiotics.....	24
2.1.8 Antibody .....	25
2.1.9 Bacterial strains .....	25
2.1.10 Plant materials.....	25
2.1.11 Softwares and database .....	25
2.2 Methods .....	26
2.2.1 Gene expression patterns and nucleotide sequencing of <i>OsDEF7</i> and <i>OsDEF8</i> in Thai jasmine rice.....	26



	Page
2.2.1.1 Gene expression patterns of <i>OsDEF7</i> and <i>OsDEF8</i> in normal condition .....	26
2.2.1.1.1 Rice cultivation .....	26
2.2.1.1.2 RNA extraction and cDNA synthesis.....	27
2.2.1.1.3 Determination of DNA and RNA concentration.....	27
2.2.1.1.4 Gene expression analysis by real-time quantitative RT-PCR.....	27
2.2.1.2 Gene expression analysis of <i>OsDEF7</i> and <i>OsDEF8</i> in an infected condition .....	28
2.2.1.3 Nucleotide sequencing of <i>OsDEF7</i> and <i>OsDEF8</i> of Thai jasmine rice .....	29
2.2.1.3.1 Amplification of <i>OsDEF7</i> and <i>OsDEF8</i> from cDNA .....	29
2.2.1.3.2 Agarose gel electrophoresis.....	29
2.2.1.3.3 Cloning of <i>OsDEF7</i> and <i>OsDEF8</i> to ColneJET vector	29
2.2.1.4 The Genevestigator tool analysis .....	30
2.2.2 Construction and transformation of plant expression vector.....	30
2.2.2.1 Codon optimization for <i>N. benthamiana</i> .....	30
2.2.2.2 Amplification of <i>OsDEF7</i> and <i>OsDEF8</i> .....	30
2.2.2.3 Cloning vector ligation.....	31
2.2.2.4 LR recombination of pEAQ3- <i>OsDEF</i> , pEAQ1-opt <i>OsDEF</i> -His-SEKDEL, pGWB2- <i>OsDEF</i> , and pGWB5- <i>OsDEF</i> .....	32
2.2.2.5 <i>Agrobacterium</i> transformation.....	33
2.2.3 Subcellular localization .....	33
2.2.3.1 <i>N. benthamiana</i> cultivation for infiltration.....	33

	Page
2.2.3.2 Tobacco BY-2 cells cultivation .....	34
2.2.3.3 Agroinfiltration in <i>N. benthamiana</i> leaves.....	34
2.2.3.4 Transient transformation of BY-2 cells.....	34
2.2.4 In plant production of recombinant OsDEFs .....	35
2.2.4.1 Hairy root .....	35
2.2.4.1.1 <i>N. benthamiana</i> cultivation in sterile condition .....	35
2.2.4.1.2 Generating hairy root.....	35
2.2.4.2 BY-2 cells .....	36
2.2.4.2.1 BY-2 cells transformation .....	36
2.2.4.2.2 Protein detection .....	36
2.2.4.3 <i>N. benthamiana</i> leaves .....	37
2.2.5 <i>In planta</i> inhibitory activity.....	37
CHAPTER III RESULTS.....	39
3.1 Nucleotide analysis of <i>OsDEF7</i> and <i>OsDEF8</i> in Thai jasmine rice ( <i>Oryza sativa</i> L. ssp. <i>indica</i> cv. KDML105).....	39
3.2 <i>In silico</i> analysis .....	40
3.2.1 Expression level of <i>OsDEFs</i> in Japanese rice ( <i>Oryza sativa</i> L. ssp. <i>japonica</i> cv. Nipponbare).....	40
3.2.2 Expression level of <i>OsDEFs</i> under abiotic stress.....	41
3.3 Gene expression patterns of <i>OsDEF7</i> and <i>OsDEF8</i> in Thai jasmine rice using quantitative RT-PCR .....	42
3.3.1 Under normal condition .....	42
3.3.2 Infection with <i>X. oryzae</i> pv. <i>oryzae</i> .....	44
3.4 Subcellular localization .....	45

	Page
3.5 Production of recombinant rice AMPs in different system of plant tissues.	47
3.5.1 Hairy roots.....	47
3.5.2 BY-2 cells.....	49
3.5.3 <i>N. benthamiana</i> leaves .....	51
3.6 <i>In planta</i> antimicrobial activity of recombinant OsDEF7 and OsDEF8 .....	53
CHAPTER IV DISCUSSION .....	54
CHAPTER V CONCLUSIONS .....	61
REFERENCES .....	62
APPENDIX.....	79
VITA.....	89



## LIST OF FIGURES

	Page
Figure 1. Phylogenetic tree of plant AMP groups.....	6
Figure 2. The barrel-stave model of mechanism of AMP.....	7
Figure 3. The carpet model model of mechanism of AMPs.....	8
Figure 4. The toroidal model of mechanism of AMP.....	9
Figure 5. Conserved structures of plant DEFs.....	11
Figure 6. Gene coexpression network analysis.....	16
Figure 7. Nucleotide sequence alignment of <i>OsDEF7</i> .....	39
Figure 8. Nucleotide sequence alignment of <i>OsDEF8</i> .....	40
Figure 9. The expression levels of <i>OsDEFs</i> in <i>Oryza sativa</i> L. ssp. <i>japonica</i> .....	41
Figure 10. The expression levels of <i>OsDEF7</i> and <i>OsDEF8</i> in abiotic stress.....	42
Figure 11. Relative gene expression of <i>OsDEFs</i> in Thai jasmine rice.....	43
Figure 12. The leaves of Thai jasmine rice infected by <i>X. oryzae</i> pv. <i>oryzae</i> .....	44
Figure 13. Relative gene expression of <i>OsDEFs</i> after infected by <i>X. oryzae</i> .....	45
Figure 14. Subcellular localization of <i>OsDEFs</i> in <i>N. benthamiana</i> leaf.....	46
Figure 15. Subcellular localization of <i>OsDEFs</i> in BY2-cell.....	47
Figure 16. Transgenic hairy root generated from <i>N. benthamiana</i> leaves.....	48
Figure 17. PCR amplification of <i>OsDEFs</i> from cDNAs of transgenic hairy roots.....	49
Figure 18. Transgenic BY-2 cell.....	50
Figure 19. PCR amplification of <i>OsDEFs</i> from cDNAs of transgenic BY-2 cell.....	50
Figure 20. Western blot analysis of protein from <i>N. benthamiana</i> .....	52
Figure 21. <i>In planta</i> antimicrobial activity of <i>OsDEFs</i> .....	53

## LIST OF TABLES

	Page
Table 1. Subcellular localization of plant AMP.....	10
Table 2. Overview of transgenic plants overexpressing a plant DEF.....	13
Table 3. Summary of the vectors used in this study.....	33



# CHAPTER I

## INTRODUCTION

### 1.1 Statement of problem

Thailand is an agricultural country that exports agricultural products to many countries all over the world. Rice (*Oryza sativa* L.) is one of the top exported products generating a great amount of income. However, rice cultivation has been facing many problems affecting the grain yield. One of the important issues is pathogen invasion causing rice diseases. Many farmers use chemical to deal with the problem but this can potentially affect health of both farmers and consumers, and the environment. There are many rice diseases caused by microbial infection such as brown spot disease infected by *Helminthosporium oryzae*, Fusarium wilt infected by *Fusarium oxysporum*, rice blast infected by *Magnaporthe grisea*, and bacterial blight infected by *Xanthomonas oryzae*. Alternative way that might solve this problem is to introduce antimicrobial peptide (AMP) to disease control. AMP is small and naturally peptides which play role as host defense peptides against microbial invasion. Natural AMP are found in both prokaryotic and eukaryotic organisms (Montesinos, 2007). Although plant AMP has been studied less than that from animals, many studies have confirmed that AMP overexpression showed significantly improved microbial resistance in plants (Carlson *et al.*, 2006; Hammami *et al.*, 2009b). From previous studies, Silverstein *et al.* (2007) have identified 825 and 598 genes encoding putative AMP in *Arabidopsis thaliana* and *O. sativa*, respectively. These high numbers of genes open an opportunity to discover potent peptides to be used in controlling diseases. However, most of those rice AMP has not been functionally characterized. Therefore, our group has been attempting to explore those rice AMP. Previously, we performed *in silico* analyses to screen potent rice AMP and reported that the recombinant rice AMP, namely OsDEF7 and OsDEF8, produced in *Escherichia coli* exhibit antimicrobial activity against

phytopathogens such as *X. oryzae* and *F. oxysporum* (Tantong *et al.*, 2016). Therefore, in this thesis, the alternative system for these peptide productions changing from bacteria to plants since plant system provides cost-effective production, low cost for purification, and exhibit high scale-up capacity (Holaskova *et al.*, 2015) were explored. In addition, gene expression profiles and subcellular localization of these peptides were performed to provide additional *in vivo* functions of both peptides.

## 1.2 Antimicrobial peptide (AMP)

In plants, the first-line of defense to prevent their cells from microbes is their physical barrier as known as cell walls composed of cellulose, lignin, cutin, and polysaccharides. Plants also produce secondary metabolites for protecting themselves from microbial pathogens and predators. Moreover, plants have their own small peptides that eliminate microbial invasion without requiring adaptive immunity (Kulkarni, 2006). This is known as AMP which is a small cysteine-rich peptide generally having less than 100 amino acids. Thus, AMPs are peptides that have ability to protect host cells from infection of any microbes, but do not include enzymes eliminating microbes (Maroti *et al.*, 2011). It has a non-specific antimicrobial activity against bacteria and fungi by invading their cell membranes (Jenssen *et al.*, 2006). It shows activity over other antibiotics because AMP targets to the cell membrane of pathogens making it harder for the AMP target to develop resistance.

Plant AMP has a function to protect plant from bacteria and fungi. AMP from *Oudneya africana* seed exhibited antibacterial activity against *E. coli*, *Listeria monocytogenes*, *Bacillus subtilis*, *Pseudomonas aeruginosa*, *Enterococcus hirae* *Staphylococcus aureus* and also yeast *Candida albicans* (Hammami *et al.*, 2009b). In addition, there are many studies reported that AMP helps protecting plants from virus and insects (Castro and Fontes, 2005; Padovan *et al.*, 2010). Because of the antimicrobial activity of AMP, transgenic plants overexpressing AMP were constructed. Metchnikowin peptide from *Drosophila melanogaster* was overexpressed in barley

showing antifungal activity against powdery mildew (Rahnamaeian and Vilcinskis, 2012). An AMP from *Pinus monticola* was overexpressed in canola exhibiting antifungal activity against *Leptosphaeria maculans*, *Sclerotinia Sclerotiorum* and *Alternaria brassicae* (Verma *et al.*, 2012). Transgenic rice overexpressing either cecropin B from *Bombyx mori* (Sharma *et al.*, 2000) or Np3, Np5 from *Fenneropenaeus chinensis* exhibited antibacterial activity against *X. oryzae* (Wang *et al.*, 2011).

### 1.2.1 Types and structures of plant AMP

In plants, a specific group of defense-related proteins are cysteine rich peptides (CRPs) that are specifically represented in the plant kingdom. The arrangement and the number of cysteine residues in the primary structure distinguish AMP groups. Those cysteine residues form different patterns of disulfide bridges in secondary structure that can be classified into seven groups including defensin (DEF), thionin (THION), lipid transfer protein (LTP), hevein-type peptides, knottin-type peptide, cyclotide, and snakine (Hammami *et al.*, 2009a) (Figure 1). Most of these peptides contain eight cysteine residues that form four disulfide bonds, which are responsible for stabilizing their three-dimensional structures and the folding of proteins (Carvalho and Gomes, 2009).

#### 1.2.1.1 Defensin (DEF)

Normally, plant DEF contains 45-54 amino acids in the primary structure which consists of a basic mature peptide and an N-terminal acidic signal peptide. DEFs have been reported to display the antimicrobial activities against bacteria, fungi, yeast, and also insects. Previously, they are known as  $\alpha$ -thionins with an approximately size of 5 to 10 kDa. In general, DEFs consist of six to eight cysteines and conserve in almost all plants. These three dimensional DEFs are stabilized by four disulfide bridges. Their structures are quite resemble to each other by forming disulfide bond from two positions of cysteine for connecting three  $\beta$ -sheets with one  $\alpha$ -helix. These disulfide bonds help stabilizing the protein structure (Tavares *et al.*, 2008).



### 1.2.1.2 Thionin (THION)

THION is a short peptide around 45–48 amino acids with four to eight of cysteine residues. THIONS have been classified into three groups,  $\alpha$ -,  $\beta$ -, and  $\gamma$ -THIONS by the pattern of disulfide bridges and  $\beta$ -sheet differently. Nevertheless, three-dimensional structures of  $\alpha$ - and  $\beta$ -THIONS are similar. It has been found that their C-terminal domains are important for antimicrobial activity, as well as basic amino acids; histidine arginine and lysine (Stec, 2006).

### 1.2.1.3 Lipid transfer protein (LTP)

It is a basic peptide which contains 70 to 93 amino acids with four disulfide bridges forming by eight cysteine residues. There are two families of LTPs; LTP1 and LTP2 (Kader, 1996). Some LTPs have been confirmed for their three-dimensional structures demonstrating a flexible hydrophobic tunnel within the molecule that could bind to lipids at different sizes (Lerche *et al.*, 1997; Charvolin *et al.*, 1999) suggesting their associated function with transportation of lipids and sphingolipids via the cell membrane. LTP proteins are also involved in microbial resistance (Tavares *et al.*, 2008).

### 1.2.1.4 Hevein-type peptide

This type of peptide is a small chitin-binding peptide which is structurally similar to hevein that is the peptide isolated from rubber latex (*Hevea brasiliensis*). These peptides form four disulfide bridges from eight cysteine residues. These AMPs are effective fungicides or plant defensive peptides against pests and microorganisms (Tavares *et al.*, 2008; Odintsova *et al.*, 2009) since the main composition of the cell walls of fungi and invertebrates is chitin.

### 1.2.1.5 Knottin-type peptide

This peptide type is formed by the inhibitor cystine knot (ICK) and a triple-stranded  $\beta$ -sheet stabilizing by the three disulfide bonds (Nawrot *et al.*, 2014). The intramolecular bonds of knottins known as cystine knots which have multiple

biological functions in plants against any pathogens. There are a few peptides of this group exhibiting  $\alpha$ -amylase inhibitor activity (Chagolla-Lopez *et al.*, 1994; Gao *et al.*, 2001). Knottins are formed as proproteins containing an N-terminus signal peptide that directs protein for secretion (De Bolle *et al.*, 1996). Moreover, the knottin have been isolated from plants; PAFP-S from *Phytolacca americana* and Mj-AMP1 from *Mirabilis jalapa* L. exhibiting antifungal activities (Cammue *et al.*, 1992; Gao *et al.*, 2001). Besides, PA1b peptide from garden pea plays role as insecticides by inhibition of vacuolar ATPase (Chouabe *et al.*, 2011).

#### 1.2.1.6 Cyclotide

This group of AMP was firstly found in the coffee-family plant *Oldenlandia affinis* (Rubiaceae) (Gran, 1973). They are ribosomally synthesized CRPs that are cyclized head-to-tail backbone. They are small peptides approximately 30 amino acids with three disulfide bonds forming by six conserved cysteine residues. Their hydrophobic face locating on different regions of the peptide surface might affect the membrane disruption of pathogens (Kamimori *et al.*, 2005).

#### 1.2.1.7 Snakin

Snakin is a basic AMP consisting of approximately 60 amino acid residues. These peptides form six disulfide bridges from twelve cysteine residues. Their amino acid sequences are similar to the members of gibberellic acid stimulated in *Arabidopsis* (GASA) family and the gibberellic acid stimulated transcript (GAST) family from tomato (Segura *et al.*, 1999; Berrocal-Lobo *et al.*, 2002). Moreover, plant hormones can control most of these genes suggesting their involvement in hormonal signaling pathways regulating hormonal levels and responses (Nahirňak *et al.*, 2012).



## 1.2.2 Mechanism of AMP

There are several models explaining the mechanisms of AMP interacting with membranes of microbial. Many AMPs have a potential to fold into amphipathic  $\alpha$ -helices with hydrophobic and hydrophilic sides. The hydrophobic side groups of these peptides bind to the hydrophobic lipidic core of the bilayer, leading to three different possible outcomes; barrel-stave model (Figure 2), carpet model (Figure 3), and toroidal model (Figure 4) (Giuliani *et al.*, 2008).

### 1.2.2.1 Barrel-stave model

In this model, peptides first get assembled in the surface of the membrane and then  $\alpha$ -helical peptides bind to the membrane. The hydrophobic site of peptide binds with the hydrophobic lipid core of the membrane bilayer and the hydrophilic peptide parts forming the interior pores on the membrane.

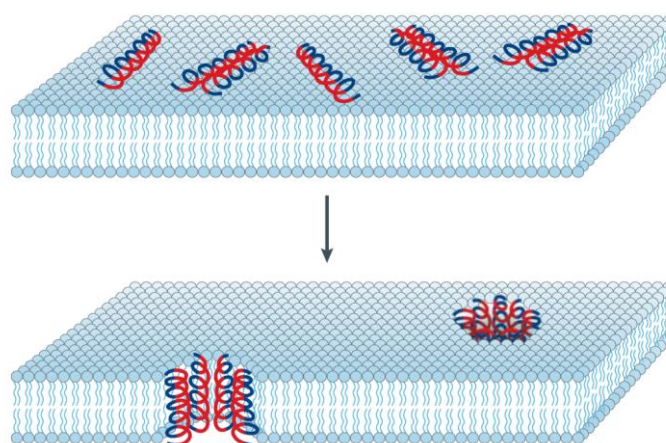


Figure 2. The barrel-stave model of mechanism of AMP (Taken from Brogden, 2005).

The hydrophilic and hydrophobic regions of the peptides are shown in red and blue, respectively.

### 1.2.2.2 Carpet model

In this model, peptides invade the microbial membrane by covering the lipid bilayer with an extensive layer of peptides. Firstly, peptides bind to the surface of lipid membrane so that their hydrophilic groups face with water molecules and hydrophobic groups of peptides bind with the bilayer. When the high concentration of peptides is present on the surface of phospholipids, membrane permeation is triggered. Lipid membranes are then disintegrated leading to micellization and pore formation.

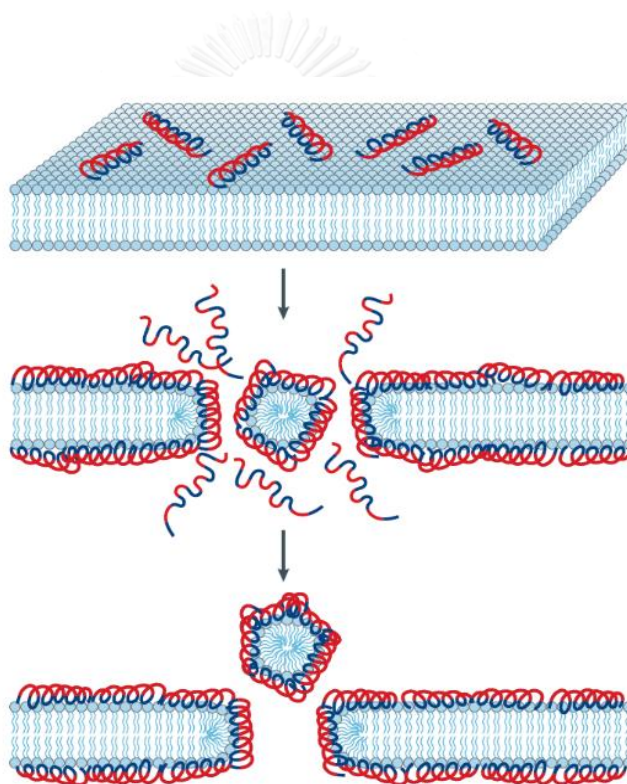


Figure 3. The carpet model model of mechanism of AMPs (Taken from Brogden, 2005). The hydrophilic and hydrophobic regions of the peptides are shown in red and blue, respectively.

### 1.2.2.3 Toroidal model

In this model, the helix peptides bind to membrane and insert themselves into the membrane bilayer and induce lipid monolayers to bend continuously through the pore so that the water core is lined by both the lipid head groups and the inserted peptides. To form a toroidal pore, the polar faces of the peptides are associated with the polar head groups of the lipids.

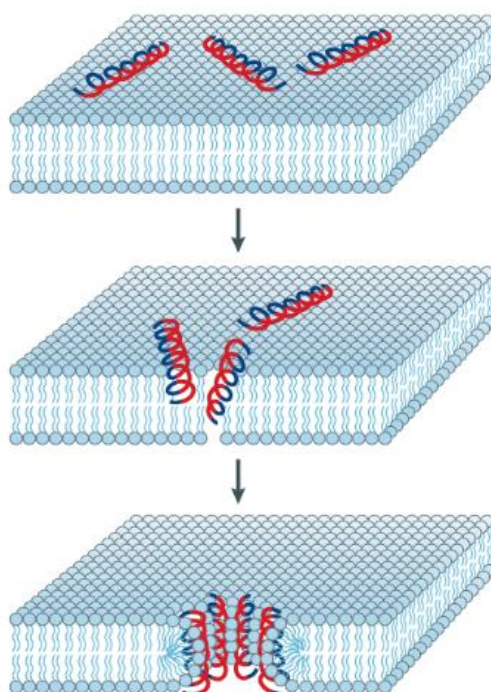


Figure 4. The toroidal model of mechanism of AMP (Taken from Brogden, 2005). The hydrophilic and hydrophobic regions of the peptides are shown in red and blue, respectively.

### 1.2.3 Subcellular localization of AMP

Understanding where peptides localize subcellularly would make one speculating their possible *in vivo* function(s). Plant AMP has been reported to be

localized to different parts of the cells depending on their signal/transit peptides (Table 1) suggesting their various biological functions. However, most of them are extracellular proteins strongly suggesting their involvement during pathogen attack.

Table 1. Subcellular localization of plant AMPs

Plant	AMP	Subcellular localization	Reference
<i>Dahlia merckii</i>	Dm-AMP1	extracellular	Jha <i>et al.</i> , 2009
<i>Medicago sativa</i>	MsDef1	extracellular	Terras <i>et al.</i> , 1995
<i>Medicago sativa</i>	alfAFP	extracellular	Gao <i>et al.</i> , 2000
<i>Nicotiana alata</i>	NaD1	vacuole	Lay <i>et al.</i> , 2003
<i>Oryza sativa</i>	OsGASR1	extracellular or the cell wall	Furukawa <i>et al.</i> , 2006
<i>Oryza sativa</i>	OsGASR2	extracellular or the cell wall	Furukawa <i>et al.</i> , 2006
<i>Raphanus sativus</i>	Rs-AFP2	cell membrane	Jha and Chattoo, 2010
<i>Solanum tuberosum</i>	SN1	cell membrane	Nahirnak <i>et al.</i> , 2012
<i>Triticum aestivum</i>	TaGASR1	cell membrane or cytosol	Zhang <i>et al.</i> , 2016
<i>Vitis vinifera</i>	VvAMP1	extracellular	de Beer and Vivier, 2008

#### 1.2.4 Defensin (DEF)

Plant DEFs are a plant AMP family of small basic peptide. The first plant DEF was isolated from barley (*Hordeum vulgare*) and wheat (*Triticum aestivum*). Initially, this AMP group was classified as a subgroup of the thionin family, called the  $\alpha$ -thionins (Colilla *et al.*, 1990). After that, they were renamed this group of proteins as “plant DEF” because of functional and structural similarities with mammalian and insect DEF (Terras *et al.*, 1995). Usually, most plant DEFs were isolated from seeds (Broekaert *et al.*, 1995) but It is now clear that plant DEFs can express in all tissues of the plant

including pollen, leaves, flowers, fruits, roots, shoots, cotyledons, and barks (de Oliveira Carvalho and Gomes, 2009). The mature peptide of plant DEF is basic with a pI of approximately 9 and molecular mass between 5 and 7 kDa. There are conserved eight cysteine residues which form four disulfide bonds for the stabilization of the three-dimensional structure. Plant DEFs show conserved structure in different plants. Despite their usual fold, the overall of sequence identity between these DEFs is normally less than 35 % and they also differ in their activities (eg, *NaD1* from *Nicotiana glauca* and *RsAFP1R* from *Aphanus sativus*) exhibit antifungal activities, *VrD2* from *Vigna radiata* inhibits  $\alpha$ -amylase, and *Brazzein* from *Pentadiplandra brazzeana* one is a sweet tasting protein (Figure 5) (Van der Weerden *et al.*, 2013).

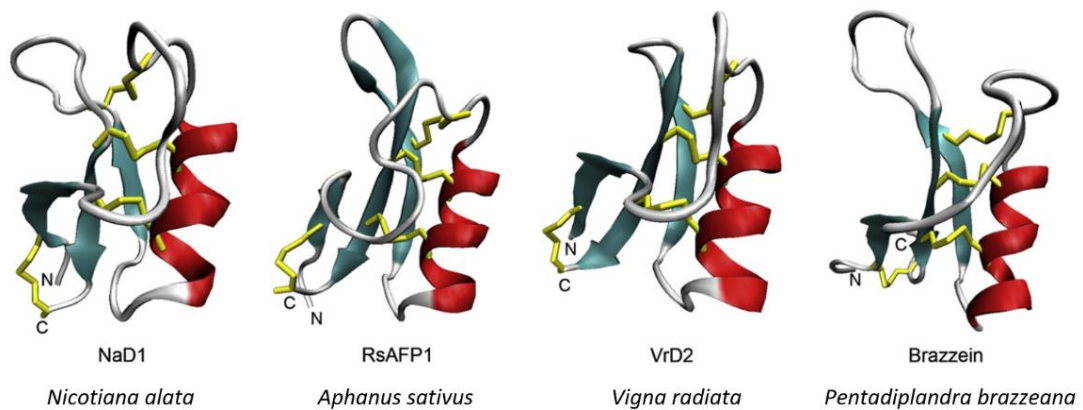


Figure 5. Conserved structures of plant DEFs. A comparison of the three-dimensional structure of DEFs from different plants. All peptides share a conserved triple-stranded  $\alpha$ -helix (red) to  $\beta$ -sheet (cyan) tethered by three disulfide bonds (yellow) with a fourth disulfide bond joining the N- and C-termini (Taken from Van der Weerden *et al.*, 2013).



Over the last decade, transgenic plants overexpressing plant DEFs have been shown to increase resistance against several fungal and bacterial diseases indicating their *in planta* potential to act as defense peptides (Table 2). However, a direct *in vivo* role of plant DEFs in defense response has not yet been established (De coninck *et al.*, 2012). Heterologous expression of peptides in transgenic plants are mostly used for increased crop yield and quality and improved cost-efficient crop production. (Holaskova *et al.*, 2015).



Table 2. Overview of transgenic plants overexpressing a plant DEF and their resulting resistance/tolerance (Modified from De Coninck *et al.*, 2013)

Defensin name	Transformed plant	Increased resistance/tolerance	Reference
AtPDF1.1	<i>Arabidopsis thaliana</i>	<i>Cercospora beticola</i>	De Coninck <i>et al.</i> , 2010
BsD1	<i>Nicotiana tabacum</i>	<i>Phytophthora parasitica</i>	Park <i>et al.</i> , 2002
BjD	<i>Arachis hypogaea</i>	<i>Pheoisariopsis personata</i> , <i>Cercospora arachidicola</i>	Anuradha <i>et al.</i> , 2008
	<i>Nicotiana tabacum</i>	<i>Fusarium moniliforme</i> , <i>Phytophthora parasitica</i>	
BrD1	<i>Oryza sativa</i>	<i>Nilaparvata lugens</i>	Choi <i>et al.</i> , 2009
DmAMP1	<i>Carica papaya</i>	<i>Phytophthora palmivora</i>	Zhu <i>et al.</i> , 2007
	<i>Oryza sativa</i>	<i>Magnaporthe oryzae</i> , <i>Rhizoctonia solani</i>	Jha <i>et al.</i> , 2009
	<i>Solanum melongena</i>	<i>Botrytis cinerea</i> , <i>Verticillium albo-atrum</i>	Turrini <i>et al.</i> , 2004a
MsDEF1/alfAFP	<i>Solanum lycopersicum</i>	<i>Fusarium oxysporum</i> f.sp. <i>lycopersici</i>	Abdallah <i>et al.</i> , 2010
	<i>Solanum tuberosum</i>	<i>Verticillium dahliae</i>	Gao <i>et al.</i> , 2000
NmDef02	<i>Solanum tuberosum</i>	<i>Phytophthora infestans</i> , <i>Alternaria solani</i>	Portieles <i>et al.</i> , 2010
	<i>Nicotiana tabacum</i>	<i>Phytophthora parasitica</i> var. <i>nicotianae</i> , <i>Peronospora hyoscyami</i> f.sp. <i>tabacina</i>	
Ovd	<i>Brassica napus</i>	<i>Sclerotinia sclerotiorum</i>	Wu <i>et al.</i> , 2009
DRR230	<i>Brassica napus</i>	<i>Leptosphaeria maculans</i>	Wang <i>et al.</i> , 1999
RsAFP2	<i>Nicotiana tabacum</i>	<i>Alternaria longipes</i>	Terras <i>et al.</i> , 1995
	<i>Oryza sativa</i>	<i>Magnaporthe oryzae</i> , <i>Rhizoctonia solani</i>	Jha and Chattoo, 2010
	<i>Solanum lycopersicum</i>	<i>Fusarium oxysporum</i> f.sp. <i>lycopersici</i> , <i>Botrytis cinerea</i>	Kostov <i>et al.</i> , 2009
		<i>Triticum aestivum</i>	<i>Fusarium graminearum</i> , <i>Rhizoctonia cerealis</i>
DEF2	<i>Solanum lycopersicum</i>	<i>Botrytis cinerea</i> , reduced seed setting, pollen viability, growth changes	Stotz <i>et al.</i> , 2009b
WT1/WjAMP1	<i>Colocynthis citrullus</i>	<i>Alternaria solani</i> , <i>Fusarium oxysporum</i>	Ntui <i>et al.</i> , 2010
	<i>Oryza sativa</i>	<i>Magnaporthe grisea</i>	Kanzaki <i>et al.</i> , 2002
	<i>Phalaenopsis orchid</i>	<i>Erwinia carotovora</i>	Sjahril <i>et al.</i> , 2006
	<i>Solanum tuberosum</i>	<i>Botrytis cinerea</i>	Khan <i>et al.</i> , 2006
ZmDEF1	<i>Nicotiana tabacum</i>	<i>Phytophthora parasitica</i>	Wang <i>et al.</i> , 2011

Not only plant DEFs are involved in defense response but also they have been reported to be induced by other stresses including cold (Koike *et al.*, 2002; Carvalho *et al.*, 2006), wounding (Pervieux *et al.*, 2004; Bahramnejad *et al.*, 2009), and drought stresses (Do *et al.*, 2004). Moreover, they also play roles in plant growth and development. Previous work reported that tomato DEF, *DEF2*, expresses during early developing flowers. DEFs at the mRNA, peptide and post-translational processing levels are differentially regulated in developing flowers. Constitutive overexpression or antisense suppression of *DEF2* affect reduced seed production and pollen viability (Stotz *et al.*, 2009). Interestingly, many plant DEFs and DEF-like peptides were found to be expressed in the female gametophyte cells of *A. thaliana* (Punwani *et al.*, 2007; Wuest *et al.*, 2010), *Z. mays* (Cordts *et al.*, 2001; Amien *et al.*, 2010) and *Torenia fournieri* (Okuda *et al.*, 2009). For example, DEF *ZmES4* from *Z. mays* is found to be expressed in the synergid cells (Amien *et al.*, 2010). Nevertheless, plant defensin-like peptides also have been expressed in the male gametophyte. They are involved in the self-incompatibility system, developed by plants to prevent self-fertilization in *Brassicaceae* (Higashiyama, 2010; Marshall *et al.*, 2011).

Regarding the structures of DEFs, both monomeric and multimeric forms of DEFs have been reported. Purified protein extracts from the leaves of a *DEF2*-overexpressing transgenic tomato in a monomer form inhibit the tip growth of *B. cinerea* (Stotz *et al.*, 2009). Dimerization of NaD1, a potent antifungal plant DEF from *Nicotiana glauca* flowers, enhances its fungal cell killing when comparing with monomeric protein. This studies identified Lys4 as an important residues for the formation of NaD1 dimer. The site-directed mutagenesis of Lys4 reduces the dimer formation. Importantly, the reduced ability of the Lys4 mutant to dimerize involves in decreased antifungal activity (Lay *et al.*, 2012). Terras *et al.* (1992) demonstrated that non-reduced radish DEFs Rs-AFP1 and Rs-AFP2 had molecular masses of 15 kDa (trimer) and/or 20 kDa (tetramer) using SDS-PAGE analysis. This was in contrast to the reduced and S-pyridylethylated

derivatives of both peptides which appeared in single bands with a molecular weight around 5 kDa. Similar demonstration for multimers of other plant DEFs, namely Ah-AMP1, Dm-AMP1, Dm-AMP2, Ct-AMP1, and Hs-AFP1 was also reported (Osborn *et al.*, 1995).

### 1.3 Rice DEFs (*OsDEF7* and *OsDEF8*)

There are almost 600 putative genes encoding AMP, predicted from the cysteine-rich characteristic of translated peptides in rice (Silverstein *et al.*, 2007). However, the possible activities/functions of most rice AMP has not been determined. Our group used bioinformatics tools, such as gene coexpression network analysis (Lee *et al.*, 2009) and gene expression pattern analysis (Jain *et al.*, 2007) to identify and characterize rice DEFs. Coexpression network analysis employs gene expression profiles from publicly available microarray data and is based on the assumption that coexpressed genes participate in the same biosynthetic pathways/biological functions. Then, out of 59 rice DEFs annotated in the genome database, we chose two genes which are *OsDEF7* (LOC\_Os02g41904) and *OsDEF8* (LOC\_Os03g03810). This is because these two genes show higher gene expression *in planta* than the other rice DEFs and also are coexpressed with pathogen-responsive genes (Figure 6). Our group heterologously produced rice *OsDEF7* and *OsDEF8* from Japanese rice (*Oryza sativa* L. ssp. *Japonica* cv. Nipponbare) in bacteria *E. coli* using glutathione S-transferase (GST) fusion protein. After cleaving GST, the recombinant peptides showed a growth inhibitory effect against bacteria; *X. oryzae* pv. *oryzicola*, *X. oryzae* pv. *oryzae*, and *Erwinia carotovora* with minimum inhibitory concentration (MIC) 0.6 to 63 µg/ml and slightly active against the phytopathogenic fungi *Fusarium oxysporum* and *Helminthosporium oryzae*. The calculated molecular weights of mature *OsDEF7* and *OsDEF8* were 5.6 and 6.0 kDa, respectively, but *OsDEF7* and *OsDEF8* were showed

single 11 and 12 kDa bands, respectively, in SDS-PAGE after purification. We proposed that OsDEF7 and OsDEF8 form homodimeric peptides (Tantong *et al.*, 2016).

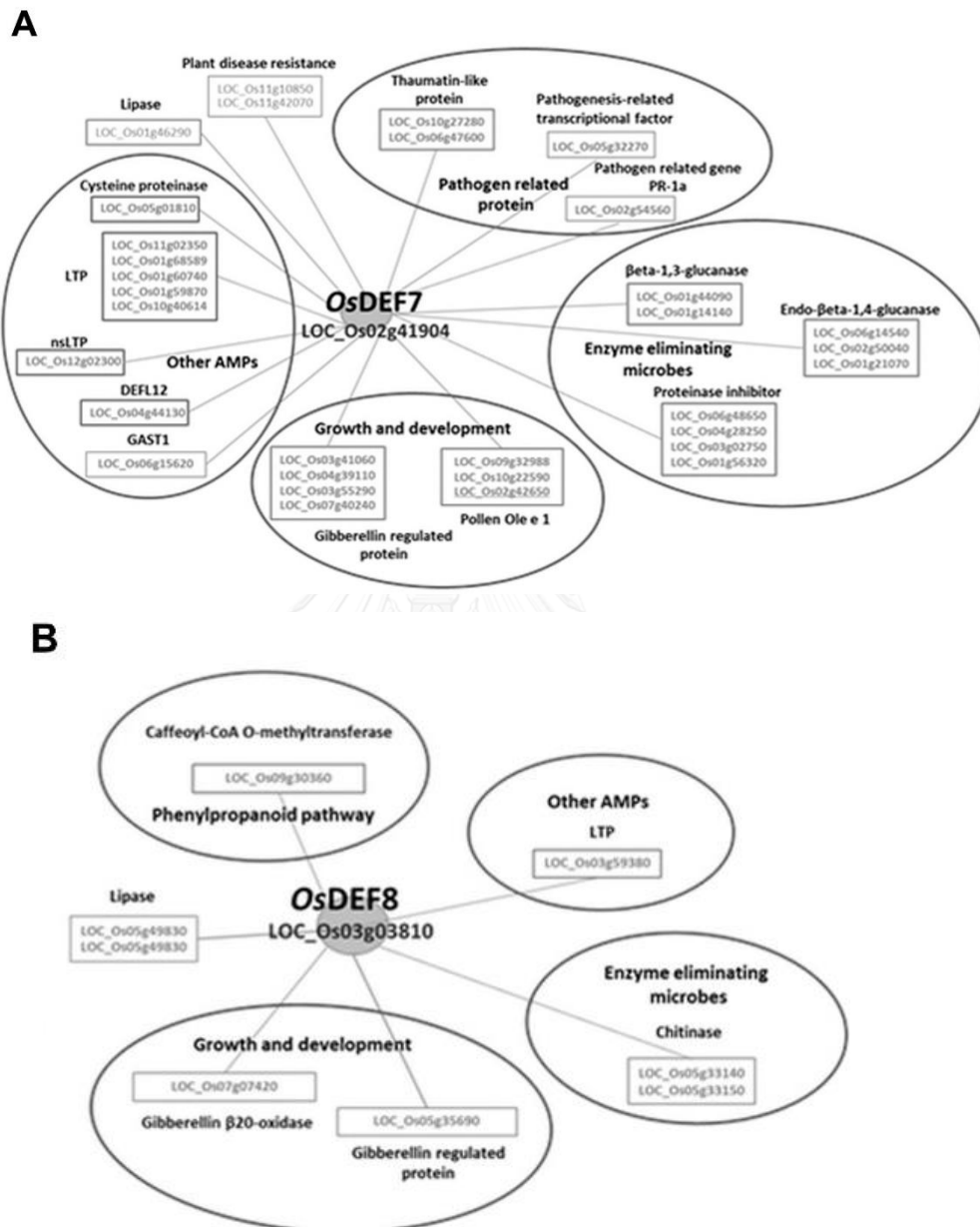


Figure 6. Gene coexpression network analysis of *OsDEF7* (A) and *OsDEF8* (B) (Taken from Tantong *et al.*, 2016).

## 1.4 Plant-based recombinant protein production

Plant-based system provides cost-effective production, low purification cost, and high scale-up capacity (Holaskova *et al.*, 2015). The major advantages of plant-based system are high quality, yield product and homogeneity. Proper folding, glycosylation, and disulfide bond formation which are important for protein activity, can also be achieved (Ma *et al.*, 2003; Ramessar *et al.*, 2008). When plant-based expression systems are compared with bacterial expression platforms, bacterial expression systems are more desirable because yeast and bacteria are easy to maintain and transform while plant-based systems require more effort, cost, and time. Nevertheless, once accepted, plant-based systems offer high-capacity scale-up, cost-efficient production, fast, easy, and low-cost storage and purification (Holaskova *et al.*, 2015). Thus, plants might be a suitable alternative system for production of AMP without the requirement for controlled expression while bacterial expression systems of an AMP needs controlled or induced transcription and/or fusion to protein or a carrier peptide. Moreover, plant-based systems are considered to be safe because plants are independent of endotoxins and human or animal pathogens, and there is almost no danger of product contamination (Daniell *et al.*, 2001; Fischer *et al.*, 2004; Magnusdottir *et al.*, 2013). There are different system to be used in this study. Each system is reviewed here.

### 1.4.1 Suspension cultures of plant cells

Undifferentiated cultured cells of plants are easy to manipulate. Plant cells suspension cultures are composed of comparatively homogeneous suspensions of quickly dividing cells established by transferring of callus into liquid media. Cell suspension culture of transgenic plant could also be prepared by direct transformation (Xu *et al.*, 2011). The most popular plant suspension cells for recombinant production in suspension cultures is tobacco (*N. tabacum*), because these cells are multiply

rapidly and easy to maintain and transform. Nevertheless, there are other plant species have been used for establishment of cell suspension cultures including soybean, tomato, carrot, and rice (Xu *et al.*, 2011). Transgenic rice cell cultures was used for expression of human lysozyme (Huang *et al.*, 2002). The carrot root cell suspension culture is a plant-based system that have been reported to produce first commercially available therapeutic protein (Shaaltiel *et al.*, 2007). This cell suspension culture was produced recombinant glucocerebrosidase protein, formulated as Elelyso™ (Protalix Biotherapeutics Inc., Israel), has been approved by the US Food and Drug Administration (FDA). The recombinant glucocerebrosidase was used for enzyme replacement therapy of Gaucher's disease (Aviezer *et al.*, 2009; Grabowski *et al.*, 2014). Production of glucocerebrosidase in carrot cell suspensions also provides pathogen-free manufacturing and cost-efficient compared to produce in mammalian cell or ovary cells of Chinese hamster.

#### 1.4.2 Hairy root cultures

This systems are widely used for biotechnological applications such as synthesis of phytochemicals, therapeutic protein production, and biotransformation of exogenous substrates (Banerjee *et al.*, 2012; Ono and Tian, 2011). Hairy root cultures are generated by the *Agrobacterium rhizogenes* infection into plant cells. This is a stable incorporation of genetic material into the host plant cell genome. Normally, after transformation two to four weeks, hairy roots grow in a highly branched with many lateral roots (Pavlov *et al.*, 2002; Sevón and Oksman-Caldentey, 2002). Hairy root cultures can be used for rapid evaluation of protein activity as well as yield and efficiency of protein production in plant-based systems. Hairy root cultures can be used to display a defensive role of AMP in disease-susceptible tissues of plants. Hairy roots of transgenic potato overexpressing a levamisole-mimetic synthetic peptide (LEV-I-7.1) were investigated the effects against nematodes *Globodera pallida*. The

transgenic hairy roots exhibited around 50% reduction in the number of obligate root parasites (Liu *et al.*, 2005).

### 1.4.3 Transient expression

From all of plant-based expression systems, transient expression by *Agrobacterium* or viral infection attracts much attention because of short time scale for production and development, high yields obtained, and expression levels. Gene expression starts within one day to a few weeks depending on the hosts, products, and the expression vectors employed. Nowadays, infiltration into leaf tissues with a suspension of *Agrobacterium tumefaciens* harboring the gene of interest in an expression vector represents the most commonly used for testing new constructs. Usually, *N. benthamiana* leaves were used for transient expression (Yang *et al.*, 2000; Sparkes *et al.*, 2006). Moreover, subcellular localization and production of a plant AMP was demonstrated in a transient expression system using a fluorescent tag. Western blot analysis of extracted proteins from *N. benthamiana* leaves clearly demonstrated the presence of the recombinant AMP product in protein bodies derived from ER (Company *et al.*, 2014).

### 1.5 *In planta* activity of plant AMP

Although *in vitro* assays of AMP is quite easier than tests of *in planta* assays, there are also limitations. Activity of a protein in a transformed plant can be significantly different from *in vitro* performance; therefore, *in vitro* data can provide some direction on AMP selection but must be considered with prudence. It has also been reported that plant AMP is more effective *in planta* than *in vitro* (Cary *et al.*, 2000; Visser *et al.*, 2012). This is because AMP might require post-translational processing to achieve the best functional conformation. *In vitro* experiment may provide an initial screen to determine candidate AMP but it might also considerably



underestimate activity of peptide sequences requiring post-translational modifications. In addition, highly amphipathic AMPs are more effective *in planta* than *in vitro* and there is an evidence that AMP *in vitro* form large aggregates that hinder function, whereas *in planta*, AMP likely exist as discrete molecules or much smaller aggregates (Stover *et al.*, 2013).



## CHAPTER II

### MATERIALS AND METHODS

#### 2.1 Materials

##### 2.1.1 Equipments

Agarose gel electrophoresis: Mupid®-exU (Advance Co., LTD, Japan)

Autoclave: Labo Autoclave MLS-3020 (Sanyo Electric Co., Ltd., Japan)

Autopipette (Gilson, France)

Balance: PB303-L (Mettler Toledo, USA)

Benchtop Centrifuge Mikro 120 (Hettich, Germany)

Biospectrometer (Eppendorf, Germany)

Blotting equipment (Biorad, USA)

CFX96 Touch Real-Time PCR (Biorad, USA)

Cooled Incubator/climatic chamber KBF720 (Binder, Germany)

Digital Balance (Mettler Toledo, USA)

Fridge and Freezer (Electrolux, Sweden)

Gel Documentation: Gel Doc™ (Syngene, England)

Incubator: Memmert (Wisconsin Oven Distributors, LLC., USA)

Incubator shaker (Kuhner shaker, Switzerland)

Incubator shaker: Innova™ 4000 (New Brunswick Scientific, UK)

Laminar flow: Bio Clean Bench (SANYO, Japan)

Magnetic stirrer and heater: C-MAG HS7 (IKA®, Germany)

Magnetic stirrer: Fisherbrand (Fisher Scientific, USA)

MicroPulser electroporator (Bio-Rad, USA)

Microwave (Sharp, Thailand)

Mini Centrifuge (Bio-Rad, USA)

Mixer mill: MM400 (Retsch®, Germany)

Power supply: PowerPac™ Basic (Bio-Rad, USA)

Refrigerated centrifuge: Legend XTR (Thermo Scientific, USA)

Refrigerated centrifuge: Universal 320R (Hettich, Switzerland)

Rotary shaker (IKA Labortechnik, Germany)

SDS-gel electrophoresis: AE-6530 (ATTO, Japan)

Thermal Cycler: T100™ Thermal Cycle (Bio-Rad, USA) 392935047216

ThermoE Cooling & Heating Block CHB-A4-2415 (Bioer Technology, China)

ThermoMixer C (Eppendorf, Germany)

pH meter (Mettler Toledo, USA)

Vortex (Scientific industries, USA)

### 2.1.2 Chemicals

(NH<sub>4</sub>)<sub>6</sub>Mo<sub>7</sub>O<sub>24</sub>·4H<sub>2</sub>O (Ajax, New Zealand)

2, 4-Dichlorophenoxyacetic acid (Sigma, USA)

2-(N-morpholino)ethanesulfonic acid (Bio Basic, USA)

5-bromo-4-chloro-3-indolylphosphate *p*-toluidine salt (Thermo Scientific, USA)

Absolute ethanol (Carlo Erba Reagenti, Italy)

Acetosyringone (PhytoTechnology Laboratories, USA)

Acrylamide (ACROS, Belgium)

Agar powder (HiMedia, India)

Agarose (Bioline, UK)

Ammonium nitrate (Ajax, New Zealand)

Ammonium persulfate: (NH<sub>4</sub>)<sub>2</sub>S<sub>2</sub>O<sub>8</sub> (Sigma, USA)

Beta-mercaptoethanol (Sigma, USA)

Bis-Acrylamide (Sigma, USA)

Boric acid (Bio Basic, USA)

Bromophenol blue (Carlo Erba Reagenti, Italy)

Calcium chloride (Carlo Erba Reagenti, Italy)

Citric acid (Bio Basic, USA)

Coomassie brilliant blue R-250 (Bio Basic, USA)

Copper (II) sulfate heptahydrate (Ajax, New Zealand)

dATP, dCTP, dGTP, and dTTP (Fermentas, USA)

Disodium phosphate (Ajax, New Zealand)

Dithiothreitol: DTT (Bio Basic, USA)

EDTA (Bio Basic, USA)

Gel red nucleic acid gel stain (Biotium, USA)

Glacial acetic acid (Merck, Germany)

Glycerol (Ajax, New Zealand)

Glycine (Bio Basic, USA)

Heiter (Kao, Thailand)

Hydrochloric acid (Merck, Germany)

Imidazole (Bio Basic, USA)

Iron (III) chloride hexahydrate (Ajax, New Zealand)

Kelcogel Gellan Gum (CP kelco, USA)

Magnesium chloride (Ajax, New Zealand)

Magnesium chloride hexahydrate (Ajax, New Zealand)

Magnesium sulfate hexahydrate (Ajax, New Zealand)

Manganese (II) chloride tetrahydrate (Ajax, New Zealand)

Methanol (Merck, Germany)

Monosodium phosphate (Ajax, New Zealand)

Murashige and Skoog basal salt mixture (PhytoTechnology Laboratories, USA)

Murashige and Skoog vitamins (PhytoTechnology Laboratories, USA)

Nitro-blue tetrazolium chloride (Thermo Scientific, USA)

Peptone (Himedia, India)

Potassium chloride (Ajax, New Zealand)

Potassium dihydrogen phosphate (Ajax, New Zealand)

Potassium hydroxide (Ajax, New Zealand)

Potassium sulfate (Ajax, New Zealand)

Skim milk (Himedia, India)

Sodium chloride (Ajax, New Zealand)

Sodium dihydrogen phosphite (Ajax, New Zealand)

Sodium dodecyl sulfate (Bio Basic, USA)

Sodium hydroxide (Ajax, New Zealand)

Sucrose (Carlo Erba Reagenti, Italy)

Sulfuric acid (Merck, Germany)

TEMED (Invitrogen, USA)

Thiamine hydrochloride (Bio Basic, USA)

Tricine (Bio Basic, USA)

Tris (Bio Basic, USA)

Triton™ X-100 (Sigma, USA)

Tween (Fluka, Switzerland)

Yeast extract (Himedia, India)

Zinc sulfate heptahydrate (Ajax, New Zealand)

### 2.1.3 Enzymes

Gateway® LR Clonase® Enzyme II mix (Thermo Scientific, USA)

iScript™ Reverse Transcription Supermix for RT-qPCR (Bio-Rad, USA)

Phusion® High-Fidelity DNA polymerase (New England Biolabs, USA)

RNase-Free DNase set (Qiagen, Germany)

SsoFast EvaGreen Supermix (Bio-Rad, USA)

Taq DNA polymerase (New England Biolabs, UK)

#### **2.1.4 Plasmids**

CloneJET PCR Cloning Kit (Thermo Scientific, USA)

pCR<sup>TM</sup>8/GW/TOPO<sup>®</sup> TA Cloning Kit (Thermo Scientific, USA)

pEAQ-HT-DEST3 (pEAQ3) (Peyret and Lomonossoff, 2013)

pEAQ-HT-DEST1 (pEAQ1) (Peyret and Lomonossoff, 2013)

pGBW2 (Nakagawa et al., 2007)

pGWB5 (Nakagawa et al., 2007)

#### **2.1.5 Molecular kits**

Bio-Rad protein assay (Bio-Rad, USA)

Ge/PCR DNA Fragments Extraction Kit (Geneaid, Taiwan)

His SpinTrap<sup>TM</sup> Spin Columns and Kit (GE Healthcare, UK)

Presto<sup>TM</sup> Mini Plasmid kit (Geneaid, Taiwan)

RNeasy<sup>®</sup> Plant Mini kit (Qiagen, Germany)

#### **2.1.6 Miscellaneous**

100 bp DNA Ladder (New England Biolabs, USA)

Gel Loading Dye, Purple (6X), no SDS (New England Biolabs, USA)

Spectra<sup>TM</sup> Multicolor Low Range Protein Ladder (Thermo Scientific, USA)

#### **2.1.7 Antibiotics**

Ampicillin (Bio Basic, USA)

Carbenicillin (Bio Basic, USA)

Cefotaxime (Bio Basic, USA)

Gentamycin (Bio Basic, USA)

Hygromycin B (Bio Basic, USA)

Kanamycin (Bio Basic, USA)

Rifampicin (Bio Basic, USA)

Spectinomycin (Bio Basic, USA)

Streptomycin (Bio Basic, USA)

### 2.1.8 Antibody

Pierce His tag mouse mAB (Thermo Scientific, USA)

Goat anti-mouse IgG secondary antibody (Thermo Scientific, USA)

### 2.1.9 Bacterial strains

*Agrobacterium rhizogenes* strain ATCC 43057

*Agrobacterium tumefaciens* strain GV3101

*Escherichia coli* DH5 $\alpha$

*Xanthomonas campestris* pv. *glycines* (TISTR 786)

*Xanthomonas oryzae* pv. *oryzae* (DOAC 4-1570)

### 2.1.10 Plant materials

Thai jasmine rice (*Oryza sativa* L. ssp. *indica* cv. KDML105)

*Nicotiana benthamiana*

Tobacco BY-2 cells

### 2.1.11 Softwares and database

ClustalW (<http://www.ebi.ac.uk/Tools/clustalw2/index.html>)

ExPaSy Bioinformatics Resource Portal (<http://au.expasy.org/tools/protparam.html>)

GENVESTIGATOR (<https://geneinvestigator.com/gv/>)

NCBI (<http://www.ncbi.nlm.nih.gov/>)

Phytozome (<http://www.phytozome.net/>)

PrediSi PREDiction of Signal peptides (<http://www.predisi.de/>)

WOLF PSORT ([http://www.genscript.com/psort/wolf\\_psort.html](http://www.genscript.com/psort/wolf_psort.html))

## 2.2 Methods

### 2.2.1 Gene expression patterns and nucleotide sequencing of *OsDEF7* and *OsDEF8* in Thai jasmine rice

#### 2.2.1.1 Gene expression patterns of *OsDEF7* and *OsDEF8* in normal condition

##### 2.2.1.1.1 Rice cultivation

Thai jasmine rice (*Oryza sativa* L. ssp. *indica* cv. KDML105) seeds were germinated in DI water at room temperature without light 2-3 days until coleoptiles appeared. DI water was changed every day. Germinated seeds were then transferred to a plastic net placing on floating plastic tray with 0.5x Yoshida's nutrient solution (Yoshida *et al.*, 1976) and put in a growth chamber under the condition, 60% relative humidity, 25 °C, and light intensity of 6000 lux with a 16 h photoperiod. Half- strength Yoshida's solution was added to maintain the solution level. After one week, rice plants were moved into separate glass bottle supplemented with Yoshida's solution. The cultivation continues in the growth chamber and rice samples were collected at 5 days (germinating seed), 2 weeks (seedling), and 1 month (mature). Flowers were also collected. Rice leaves and roots were collected separately. Samples were wrapped in aluminum foil and frozen in liquid nitrogen. Frozen tissues were then ground into a fine powder using a mixer mill (Retsch, MM400) at 30 Hz for 30 s.



#### 2.2.1.1.2 RNA extraction and cDNA synthesis

Approximately 100 mg of ground sample was used for RNA extraction. Total RNA was isolated from the ground frozen rice tissue samples at different developmental stages and organs using the RNeasy® Plant Mini kit (Qiagen, USA). Total RNAs were treated with RNase-Free DNase for 10 min at room temperature. The cDNAs were synthesized by iScript cDNA synthesis kit (Bio-Rad, USA) using 1 µg RNA as the template.

#### 2.2.1.1.3 Determination of DNA and RNA concentration

DNA or RNA concentrations were determined using spectrophotometry. Their concentrations can be calculated by absorbance at 260 nm (A<sub>260</sub>) of the solution. DNA solution has the concentration of 50 µg/ml when A<sub>260</sub> is equal to 1 while RNA solution is 40 µg/ml.

#### 2.2.1.1.4 Gene expression analysis by real-time quantitative RT-PCR

The quantitative RT-PCR was performed using SsoFast EvaGreen Supermix (Bio-Rad, USA). Each PCR reaction contained 5 µl of EvaGreen Supermix, 2 µl of the diluted cDNA (20 ng RNA), 2 µl of nuclease free water and 10 µM of each primer in a total reaction volume of 8 µl. The primers used to amplify *OsDEF7* were def7RT-F (5'-GTGAGCAGCAACAACACTGCG-3') and def7RT-R (5'-CGACGAGCAATGCGACTG-3'), and that used to amplify *OsDEF8* were def8RT-F (5'-TGATCGATGAACCAGCAGCTA-3') and def8RT-R (5'-GGATGGATGGTGGATGCAC-3'). Real-time PCR reactions were performed in a CFX96™ Real-Time PCR (BIO-RAD, USA). PCR reactions were performed under the following conditions: denaturation at 95 °C for 30 sec, 40 cycles of denaturation (95 °C for 5 sec); and annealing and extension (58 °C for 10 sec), denaturation at 95 °C for 15 sec, and melt curve construction starting from 65 °C for 15 sec (0.5 °C increment until 95 °C). Plate read was conducted every cycle at the end of annealing and extension step, and after each increment for melting curve. To determine efficiency of the primer

pair, real-time PCR was performed with a serial dilution of template concentration. CT values of at least five cDNA concentrations were plotted on x-axis against log cDNA dilution on y-axis to create standard curve. PCR efficiency was calculated from:  $E = 10^{-1/\text{slope}}$ , which E is the efficiency. Percent PCR efficiency should be within 90-110%. All real-time PCRs were done in three technical replicates. Relative gene expression levels were calculated by comparative CT method (Schmittgen and Livak, 2008) using *OsEF-1 $\alpha$*  as a reference gene. The primers used to amplify *OsEF-1 $\alpha$*  were *OsEF1 $\alpha$ -F* (5'-ATGGTTGTGGAGACCTTC-3') and *OsEF1 $\alpha$ -R* (5'-TCACCTTGGCACCGTTG-3'). Fold change of gene expression between two samples is equal to  $2^{-\Delta\Delta CT}$  that  $\Delta\Delta CT = (\text{CT gene of interest} - \text{CT } OsEF-1\alpha) \text{ sample A} - (\text{CT gene of interest} - \text{CT } OsEF-1\alpha) \text{ sample B}$ . At least three biological replicates were used in every quantitative RT-PCR experiment. These expression pattern in Thai jasmine rice was compared to the Geneinvestigator microarray database of Japanese rice (Hruz, 2008).

#### 2.2.1.2 Gene expression analysis of *OsDEF7* and *OsDEF8* in an infected condition

*X. oryzae* pv. *oryzae* was cultured in nutrient broth at 28°C with 250 rpm shaking for 48 h. The cultures were diluted with nutrient broth to an appropriate optical density at 600 nm ( $OD_{600}$ ) of 0.2. Then, two weeks old rice leaves were cut out around 1 inch from the tip and dipped into the suspension culture of *X. oryzae* pv. *oryzae* for 1 min. For, the control set, rice leaves were dipped in autoclaved nutrient broth. Infected rice and control rice plants were left for 6 h, 4 days, and 8 days. The treated leaves, two inches from the cut edge, were collected. Then, RNA was extracted from the samples. The cDNAs were synthesized. The quantitative RT-PCR was performed as previously described.

### 2.2.1.3 Nucleotide sequencing of *OsDEF7* and *OsDEF8* of Thai jasmine rice

#### 2.2.1.3.1 Amplification of *OsDEF7* and *OsDEF8* from cDNA

*OsDEF7* and *OsDEF8* were amplified using cDNA from seedling leaf. The primers used to amplify *OsDEF7* were def7-F (5'-ATGGCTCCGTCT CGTCGCATG -3') and def7-R (5'- CTAGCAGACCTTCTTGCAGAAG -3'), and that used to amplify *OsDEF8* were def8-F (5'- ATG GAGGCTTCACGCAAGGTGTT -3') and def8-R (5'- TCAGGGGCAGGGCTTGGTGC -3'). PCR amplifications were performed with Phusion®High-Fidelity DNA polymerase (New England Biolabs, USA). The PCR conditions of 50 µl amplification reaction were consisted of 1x phusion buffer, 200 µM dNTP, 0.5 µM each primer, 1 µl cDNA and Phusion DNA polymerase 1.0 units/50 µl PCR . The PCR thermal cycling conditions were 98°C for 30 s, 30 cycles of 98°C for 10 s, 55°C for 30 s and 72°C for 15 s, and then a final extension at 72°C 5 min.

#### 2.2.1.3.2 Agarose gel electrophoresis

The PCR products were analyzed by using 1% agarose gel electrophoresis. Agarose powder was dissolved in 1X TBE buffer (Tris-HCl, Boric acid, EDTA), boiled the solution. The gel was poured into tray and the plastic comb was placed in the gel. After the gel was completely set, PCR products were mixed with 5X loading dye DNA which mix with gelred nucleic acid gel stain and loaded each well. The size was determined by comparing with DNA Marker 100 bp. Electrophoresis was performed at 100 mV 25 min. DNA fragment was detected by gel documentation under UV transilluminator.

#### 2.2.1.3.3 Cloning of *OsDEF7* and *OsDEF8* to ColneJET vector

The PCR products were ligated into CloneJET PCR Cloning Kit (Thermo Scientific, USA). The 3 µl of ligation reaction was transformed into *E. coli* DH5α by electroporation at 1.5 kV. The culture was recovered at 37 °C for 1 h. The recombinant plasmid was

selected in 50 µg/ml ampicillin LB agar plate. Colony PCR was performed for selecting of transformed *E. coli*. The transformed colony was cultured in 3 ml of LB containing 50 µg/ml ampicillin in the temperature-controlled shaker at 37°C, 250 rpm overnight. The recombinant plasmid was extracted using Presto™ mini plasmid kit (Geneaid, Taiwan) and sent to Bio-basic, Canada for sequencing analysis. After that, the nucleotide sequences of *OsDEF7* and *OsDEF8* in Thai jasmine rice were compared with the nucleotide sequences of Japanese rice from phytozome database (<http://www.phytozome.net/>).

#### 2.2.1.4 The Genevestigator tool analysis

Genevestigator microarray database (<https://genevestigator.com/gv/>) (Hruz, 2008) was used to analyze the expression levels of *OsDEF7* and *OsDEF8* in Japanese rice at different developmental stages and organs. The abiotic stress including drought, cold, imbibition, anoxia, and dehydration of *OsDEF7* and *OsDEF8* in japonica, amaro, and indica rice was also examined.

### 2.2.2 Construction and transformation of plant expression vector

#### 2.2.2.1 Codon optimization for *N. benthamiana*

*OsDEFs* were codon-optimized for *N. benthamiana* using codon optimization tool (<https://www.idtdna.com/CodonOpt>). The synthetic codon-optimized *OsDEF7* or *OsDEF8* gene (gBlocks® Gene Fragments, Integrated DNA Technologies, Singapore) which was included 6xHis-tag and a peptide, SEKDEL, as ER retention motif at the downstream.

#### 2.2.2.2 Amplification of *OsDEF7* and *OsDEF8*

The pUC18 containing either *OsDEF7* or *OsDEF8* was used as templates for destination vector pEAQ-HT-DEST3 (pEAQ3) (Peyret and Lomonosoff, 2013), pGWB2 and pGWB5 (Nakagawa *et al.*, 2007). All vectors used in this study are listed in Table 3.

The following primers were designed to exclude the stop codon for pEAQ3 and pGWB5: def7-F (5'-ATGGCTCCGTCTCGTCGCATG-3'), def7nostopcodon-R (5'-GCAGACCTTCTTGCAAGCA -3'), def8-F (5'-ATGGAGGCTTCACGCAAGGTGTT-3'), and def8 nostopcodon -R (5'-GGGGCAGGGCTTGGTGCA-3'). The primers were designed including stop codon for pGWB2: def7-F (5'-ATGGCTCCGTCT CGTCGCATG -3'), def7-R (5'-CTAGCAGACCTTCTTGCAAG -3'), (5'- ATGGAGGCTTCACGCAAGGTGTT -3') and def8-R (5'- TCAGGGCAGGGCTTGGTGC -3'). OptOsDEF-His-SEKDEL gene synthetic were used as a template for destination vector pEAQ-HT-DEST1 (pEAQ1) (Peyret and Lomonosoff, 2013). The primer which used to amplify optOsDEF7-His-SEKDEL were def7sekdel-F (5'-ATGGCACCTTCACGAAGGAT-3') and sekdel-R (5'-TTCAGAAAAGGACGAATTGTAG -3'), and that used to amplify optOsDEF8-His-SEKDEL were def8sekdel-F (5'- ATGGAAGCCAGTCGTAAAGTG -3') and sekdel-R (5'-TTCAGAAAAGGACGAATTGTAG -3') PCR amplifications were performed with Phusion® High-Fidelity DNA polymerase (New England Biolabs, USA). The 50 µl of PCR reactions were consisted of 1x Phusion buffer, 200 µM of dNTP, 0.5 µM of each primer, 1 µl of cDNA and Phusion DNA polymerase 1.0 units/50 µl PCR. The PCR thermal cycling conditions were 98°C for 30 s, 30 cycles of 98°C for 10 s, 55°C for 30 s and 72°C for 15 s, and then a final extension at 72°C 5 min. Then, agarose gel electrophoresis was performed to confirm the size of PCR products

### 2.2.2.3 Cloning vector ligation

PCR product was purified using Gel/PCR DNA fragments extraction kit (Geneaid, Taiwan). Then, 3' A overhang was added to the purified PCR product. The reaction consists of 1 µl of 10 mM dNTP, Taq 1 µl of polymerase, 1 µl of 10x Taq buffer, and 7 µl of purified PCR product and were incubated at 72 °C for 10 min. Subsequently, the A overhanged-PCR product was ligated into pCR®8/GW/TOPO®TA cloning kit (Thermo Scientific, USA). The ligation reaction mixture with 1 µl PCR product, 0.5 µl salt solution, 0.5 µl pCR™8/GW/TOPO® TA vector and 1 µl water was incubated at 22-23 °C for 5 min. The 3 µl of ligation reaction was transformed into *E. coli* DH5α by electroporation.

The recombinant plasmid was selected in LB agar plate containing 50 µg/ml spectinomycin. Colony PCR was performed for selecting of transformed *E. coli*. The transformed colony was cultured in 3 ml of LB containing 50 µg/ml spectinomycin in the temperature-controlled shaker at 37°C, 250 rpm overnight. The recombinant plasmid was extracted using Presto™ mini plasmid kit (Geneaid, Taiwan). Sequencing analyses were performed by Bio-basic, Canada.

#### **2.2.2.4 LR recombination of pEAQ3-*OsDEF*, pEAQ1-opt*OsDEF*-His-SEKDEL, pGWB2-*OsDEF*, and pGWB5-*OsDEF***

*OsDEF7* and *OsDEF8* in the expression vectors were generated using Gateway cloning technology. Either *OsDEF7* or *OsDEF8* coding region in pCR™8/GW/TOPO® TA vector was recombined into the pGWB2 destination vector, or the C-terminal GFP fusions destination vector, pGWB5, or the pEAQ1 vector, or the C-terminal His-tag fusions destination vector, pEAQ3) using LR Clonase® Enzyme II mix (Thermo Scientific, USA). The reaction was consisted of 1–7 µl entry clone (50–150 ng), 1 µl destination vector (150 ng/µl), TE buffer pH 8.0 to 8 µl and 2 µl of LR Clonase, and was incubated at 25°C for 1 h. The 3 µl of ligation reaction was transformed into *E. coli* DH5α by electroporation. The recombinant plasmid was cultured in a LB selection agar medium with 50 µg/ml kanamycin and hygromycin B for pGWB2, pGWB5 and 50 µg/ml kanamycin for pEAQ1, pEAQ3. Colony PCR was performed for selecting of transformed *E. coli*. The transformed colony was cultured. The recombinant plasmid was extracted using Presto™ mini plasmid kit (Geneaid, Taiwan).

Table 3. Summary of the vectors used in this study.

vector	purpose
CloneJET	Cloning vector for sequencing
pCR <sup>TM</sup> 8/GW/TOPO <sup>®</sup> TA	Cloning vector for LR recombination
pEAQ-HT-DEST3 (pEAQ3)	Expression vector containing His-tag used for BY2 transformation and transient expression in <i>N. benthamiana</i> leaf
pEAQ-HT-DEST1 (pEAQ1)	Expression vector used for transient expression in <i>N. benthamiana</i> leaf
pGWB2	Expression vector used for hairy root transformation
pGWB5	Expression vector containing GFP tag used for subcellular localization

#### 2.2.2.5 *Agrobacterium* transformation

All constructed expression vectors containing either *OsDEF7* or *OsDEF8* were transformed into *A. tumefaciens* by electroporation at 1.5 kV. For only the constructed pGWB2 vector were transformed into *A. rhizogenes*. After transformation, *Agrobacterium* culture was recovered at 28 °C for 1.5 h. The transformed *A. tumefaciens* cell was selected in LB agar medium with 50 µg/ml of kanamycin, hygromycin B, gentamycin, and rifampicin for pGWB2, pGWB5 and 50 µg/ml kanamycin, gentamycin, and rifampicin for pEAQ1, pEAQ3. The transformed *A. rhizogenes* cell was selected in 50 µg/ml kanamycin and hygromycin B LB agar medium for pGWB2.

#### 2.2.3 Subcellular localization

##### 2.2.3.1 *N. benthamiana* cultivation for infiltration

*N. benthamiana* seeds were germinated in small pots with peat moss and grown under controlled condition 25 °C, and light intensity of 4000 lux with a 16 h photoperiod for one and a half months. The plants were watered 3 times per week.

### 2.2.3.2 Tobacco BY-2 cells cultivation

Tobacco BY-2 cell were obtained from RIKEN BRC, Japan. The plant cells were cultured on Murashige and Skoog salt mixture medium containing 3% sucrose, 0.2 mg/ml  $\text{KH}_2\text{PO}_4$  and 0.2  $\mu\text{g}/\text{ml}$  2, 4-dichlorophenoxyacetic acid in dark at 25 °C. Plant cultures on agar plate were subcultured once a month and the culture in liquid medium were subcultured every week with 120 rpm shaking on orbital shaker.

### 2.2.3.3 Agroinfiltration in *N. benthamiana* leaves

A single colony of recombinant *A. tumefaciens* harboring either of pGWB5-*OsDEFs* was cultured in LB medium containing 50  $\mu\text{g}/\text{ml}$  kanamycin, 50  $\mu\text{g}/\text{ml}$  hygromycin B, 50  $\mu\text{g}/\text{ml}$  gentamycin, and 50  $\mu\text{g}/\text{ml}$  rifampicin and then grown for 2 nights at 28°C with shaking at 250 rpm. The cultures were harvested by centrifugation at 5000 × g for 15 min, and the pellet was resuspended in 10 mM MMA buffer (MES-MgCl<sub>2</sub>-acetosyringone) to an appropriate optical density at 600 nm ( $\text{OD}_{600}$ ) of 1 and was incubated at room temperature for 2-3 h. The cells were used for the co-infiltration of 1:1 ratio with *A. tumefaciens* containing p19, silencing suppressor (Lindbo, 2007) which cultured in LB medium containing 50  $\mu\text{g}/\text{ml}$  kanamycin, 50  $\mu\text{g}/\text{ml}$  gentamycin, and 50  $\mu\text{g}/\text{ml}$  rifampicin into the abaxial of six week-old plants, using a needleless 1-ml syringe. The infiltrated plants were left for five days. Pieces of the infiltrated leaves were sampled from the infected area and observed under the confocal laser scanning microscopy (Olympus FluoView FV1000). GFP was excited at 488 nm and the emission filter wavelengths were 497 to 526 nm for GFP.

### 2.2.3.4 Transient transformation of BY-2 cells

Single colony of *A. tumefaciens* harbouring gene of interest was cultured in LB medium containing proper antibiotic then grown for 2 nights at 28°C with shaking at 250 rpm. Agrobacterium culture was harvested and resuspended in MS salt mixture medium to an appropriate optical density at 600 nm ( $\text{OD}_{600}$ ) of 1. The *A. tumefaciens*



harbouring gene of interest culture 100  $\mu$ l and 100  $\mu$ l of *A. tumefaciens* containing p19 was co-incubated with 5 ml of 3 days BY-2 cell which was subcultured in MS salt mixture liquid medium and then add 20 mM acetosyringone 5  $\mu$ l. The co-incubated culture was sat at 25°C in dark. After 5 days, the cultures were harvested by centrifugation at 12000  $\times$  g for 15 min. The supernatant was observed under the UV light.

## 2.2.4 In plant production of recombinant OsDEFs

### 2.2.4.1 Hairy root

#### 2.2.4.1.1 *N. benthamiana* cultivation in sterile condition

*N. benthamiana* seeds were washed with 70% alcohol for 1 min with shaking and then removed. Subsequently, they were washed in a mixture of 200  $\mu$ l Heiter, 1 ml sterile water, and 2  $\mu$ l triton-x100 with shaking at 40 rpm for 10 min. Then, seeds were washed with sterile water 3-5 times and dried them on filter paper. Sterile seeds were grown in MS vitamin agar medium containing  $\frac{1}{2}$  MS vitamin, 2% glucose, and 0.1% kelcogel in glass bottle at 25 °C, and light intensity of 4000 lux with a 16 h photoperiod for one and a half months.

#### 2.2.4.1.2 Generating hairy root

Single colony of the transformed *A. rhizogenes* cell was cultured in LB medium with antibiotic and then grown for 2 nights at 28°C with shaking at 250 rpm. Agrobacterium culture was harvested and resuspended in MS vitamin medium to an appropriate optical density at 600 nm (OD<sub>600</sub>) of 1. The leaf of *N. benthamiana* was cut into 1-1.5 square and transfer to 20 ml MS liquid medium in plate. Subsequently, 100  $\mu$ l of *A. rhizogenes* harboring gene of interest was added into plate and incubated at 28 °C in dark for 2 night. After that, infected leaf was washed with MS medium 3 times for eliminating Agrobacterium and then transferred onto MS agar containing 500

µg/ml of cefotaxime. The transgenic root from *N. benthamiana* leaf was selected in MS agar containing 50 µg/ml kanamycin and 50 µg/ml hygromycin B. The transgenic root that was capable of growing in MS selection medium was transferred to MS liquid medium.

#### 2.2.4.2 BY-2 cells

##### 2.2.4.2.1 BY-2 cells transformation

Five ml of three days old BY-2 cells was transferred into a culture dish, then incubated at 25 °C with 100 µl of *A. tumefaciens* ( $OD_{600}=1$ ) harboring either of transgene expression constructs, pEAQ3-*OsDEFs*, and 5 µl 20 mM acetosyringone in the dark. After 48 h of cocultivation, the cultures were washed with MS salt mixture medium for three times and plated on MS salt mixture agar medium containing 50 µg/ml kanamycin and 500 µg/ml carbenicillin. After 2-3 weeks, the transformed BY-2 cell were transferred onto fresh solid MS medium salt mixture plate containing 50 µg/ml kanamycin for selection. The positive clone was inoculated into liquid medium containing 50 µg/ml kanamycin for one week with 120 rpm shaking.

##### 2.2.4.2.2 Protein detection

The supernatants of cell suspension culture were collected by centrifugation at 5000 ×g for 15 min. Proteins were separated by 12% SDS polyacrylamide gel electrophoresis at a constant 20 mA per gel for 1.30 h in tricine buffer and stained with coomassie brilliant blue. For Western blot analysis, gel and filter papers were incubated with a transfer buffer (25 mM Tris, 150 mM glycine and 20% methanol). PVDF membrane was activated with absolute methanol. Gel, membrane, and filter paper were placed on Wet/Tank Blotting System (Bio-RAD) at a constant 350 mA for 30 min. After that 10% of skim milk was blocked in 1x Tris-buffered saline (TBS) and 0.05 % (v/v) tween 20 (TBST) at room temperature with shaking for one h before stored at 4 °C. After washing out the blocking solution using TBST 3 times for 10 min each, PVDF

membrane was incubated with primary antibody (Pierce his tag mouse mAB diluted) at 1:2000 dilution in TBST for 1.30 h at room temperature with 40 rpm shaking. Then, the membrane was washed three times and incubated with secondary antibody (alkaline phosphatase conjugated goat anti-mouse) at 1:1000 dilution in TBST for 1 h at room temperature with 40 rpm shaking. After that, membrane was washed three times with TBST before the protein detection by color development using BCIP (5-bromo-4-chloro-3-indolyl-phosphate) is used in a conjunction with nitroblue tetrazolium (Thermo Scientific, USA) for the colorimetric detection of alkaline phosphatase activity.

#### **2.2.4.3 *N. benthamiana* leaves**

*A. tumefaciens* harboring either pEAQ3-OsDEFs or pEAQ1-OsDEF-His-SEKDELs was infiltrated into of six week-old plants same as mentioned in 2.2.3.3 without co-infiltration with p19. After 5 days, infiltrated leaves were collected and frozen by liquid nitrogen. Frozen leaves of 0.1 mg fresh weight were ground into a fine powder using a mixer mill and extracted in 1 ml lysis buffer (10 mM Tris-HCl pH 6.2, 50 mM KCl, 6 mM MgCl<sub>2</sub>, 0.4 M NaCl, 1% (v/v) Triton X-100, and 10 mM EDTA), centrifuged at 15,000 g for 15 min at 4 °C and then purified using His SpinTrap (GE Healthcare, UK). Purified protein was separated and performed western blot analysis as previously described in 2.2.4.2.2.

#### **2.2.5 *In planta* inhibitory activity**

*A. tumefaciens* harboring either pEAQ3-OsDEFs or pEAQ1-OsDEF-His-SEKDELs adjusted the OD<sub>600</sub> of 2 was co-infiltrated at 1:1 ratio with *X. campestris*, which was cultured in nutrient broth at 28 °C 250 rpm, adjusted the OD<sub>600</sub> of 0.4 into the abaxial of six week-old plants same as mentioned in 2.2.3.3. The infiltrated plants were left

for 7-9 days and observed the disease symptoms of *N. benthamiana* leaf comparing with control in same leaf.




## CHAPTER III

### RESULTS

#### 3.1 Nucleotide analysis of *OsDEF7* and *OsDEF8* in Thai jasmine rice (*Oryza sativa* L. ssp. *indica* cv. KDML105)

Both *OsDEFs* of Thai jasmine rice were cloned into CloneJET vector for comparing nucleotide sequences with that of Japanese rice from phytozome database (<http://www.phytozome.net/>). The nucleotide sequences of both genes in these two subspecies showed 100% identity (Figure 7) (Figure 8).



Japanese <i>OsDEF7</i>	1	ATGGCTCCGTCTCGTCGCATGGTCGCGTCCGCCTTCCTCCTCCTGGCCAT	50
Thai <i>OsDEF7</i>	1	ATGGCTCCGTCTCGTCGCATGGTCGCGTCCGCCTTCCTCCTCCTGGCCAT	50
Japanese <i>OsDEF7</i>	51	CCTCGTCGCCACAGAGATGGGGACGACCAAGGTGGCGGAGGCAGGGCACT	100
Thai <i>OsDEF7</i>	51	CCTCGTCGCCACAGAGATGGGGACGACCAAGGTGGCGGAGGCAGGGCACT	100
Japanese <i>OsDEF7</i>	101	GCCTGTGCGCAGAGCCACAGGTTCAAGGGCATGTGCGTGAGCAGCAACAAC	150
Thai <i>OsDEF7</i>	101	GCCTGTGCGCAGAGCCACAGGTTCAAGGGCATGTGCGTGAGCAGCAACAAC	150
Japanese <i>OsDEF7</i>	151	TGCGCCAACGTGTGCAGGACGGAGAGCTTCCCGACGGCGAGTGCAAGTC	200
Thai <i>OsDEF7</i>	151	TGCGCCAACGTGTGCAGGACGGAGAGCTTCCCGACGGCGAGTGCAAGTC	200
Japanese <i>OsDEF7</i>	201	GCACGGCCTCGAGCGCAAGTGCTTCTGCAAGAAGGTCTGCTAG	243
Thai <i>OsDEF7</i>	201	GCACGGCCTCGAGCGCAAGTGCTTCTGCAAGAAGGTCTGCTAG	243

Figure 7. Nucleotide sequence alignment of *OsDEF7* from *Oryza sativa* L. ssp. *indica* cv. KDML105 and *Oryza sativa* L. ssp. *japonica* cv. Nipponbare



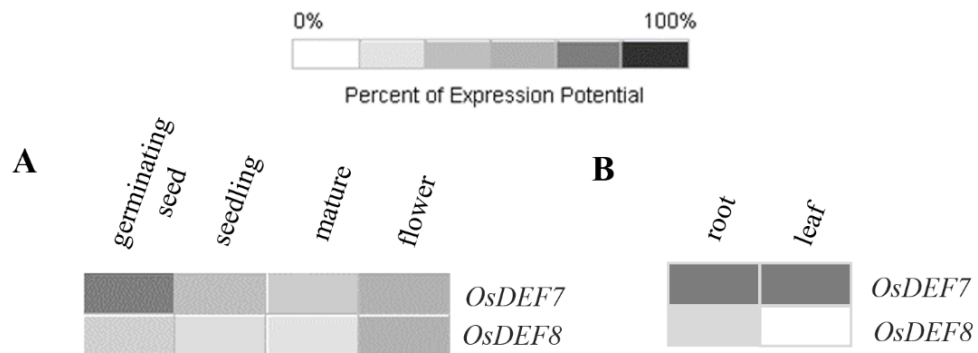


Figure 9. The expression levels of *OsDEF7* and *OsDEF8* in *Oryza sativa* L. ssp. *japonica* at different developmental stages; germinating seed, seedling (leaf and root), mature, and flower (A) and between organs; root and leaf of seedling (B) from the Genevestigator microarray database (<https://www.genevestigator.ethz.ch>)

### 3.2.2 Expression level of *OsDEFs* under abiotic stress

We also investigated the expression of these two genes under abiotic stress using the Genevestigator tool. *OsDEF7* and *OsDEF8* expression levels were influenced by several stress conditions (Figure 10). Particularly, *OsDEF7* was upregulated when treated under imbibition and anoxia conditions whereas *OsDEF8* was upregulated under drought, cold, and dehydration treatments.

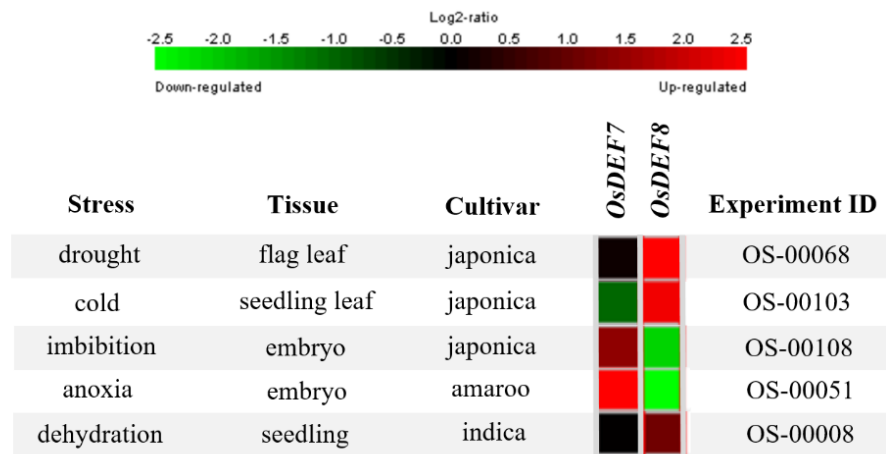


Figure 10. The expression levels of *OsDEF7* and *OsDEF8* in abiotic stress by the following stress: drought, cold, imbibition, anoxia, and dehydration from the Genevestigator microarray database (<https://www.genevestigator.ethz.ch>).

### 3.3 Gene expression patterns of *OsDEF7* and *OsDEF8* in Thai jasmine rice using quantitative RT-PCR

#### 3.3.1 Under normal condition

The level of gene expression of both DEFs in Thai jasmine rice was compared at the different stages including germination, seedling, mature until flowering. The results from quantitative RT-PCR showed that *OsDEF7* was highly expressed in the germinating stage whereas inflorescence was the organ in which *OsDEF8* was most expressed (Figure 11). These findings were similar to the patterns found in the Genevestigator database showing the data from Japanese rice (Figure 9). Noticeably, almost all tissues tested, *OsDEF7* was higher expressed than *OsDEF8*. Although similar gene expression pattern in developmental stages was found between Thai and Japanese rice, the gene expression pattern of *OsDEF7* in roots and leaves was different. *OsDEF7* in Japanese rice exhibited equally expression in roots and leaves but, in Thai rice, *OsDEF7* expressed much higher in roots more than leaves in both seedling and mature stages.



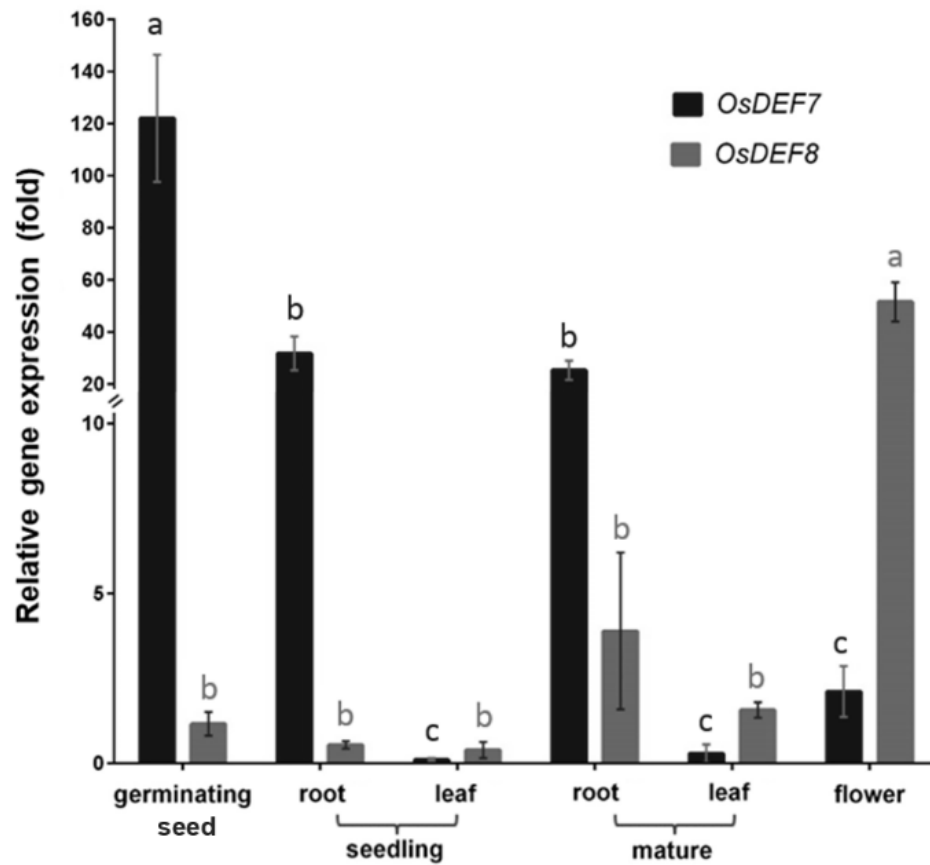


Figure 11. Relative gene expression of *OsDEF7* and *OsDEF8* in Thai jasmine rice from quantitative RT-PCR which were normalized to the standard *EF1 $\alpha$*  gene and were calculated to relatively compare with the germinating stage of *OsDEF8*. Each value represents the mean  $\pm$  SD (n = 3) with different letters indicate significant differences (P < 0.05) for each gene.

### 3.3.2 Infection with *X. oryzae* pv. *oryzae*

Thai jasmine rice was infected by *X. oryzae* pv. *oryzae* causing bacterial blight disease and collected at 6 hpi, 4 dpi, and 8 dpi. The disease symptom of the infected rice and the control were shown in Figure 12. The results from quantitative RT-PCR showed that *OsDEF7* and *OsDEF8* were upregulated upon infection with a high upregulation at 8 dpi (Figure 13). At the early infection time, *OsDEF8* was upregulated much quicker than *OsDEF7* at 4 dpi. Eventually, at 8 dpi, *OsDEF7* was expressed higher than the *OsDEF8*. The induction of both genes upon *X. oryzae* pv. *oryzae* infection suggests their involvement in pathogen defense.



Figure 12. The leaves of Thai jasmine rice infected by *X. oryzae* pv. *oryzae*. Control leaves at 4 days post-infection (dpi) (A), and 8 dpi (C). Infected leaves at 4 dpi (B), and 8 dpi (D).

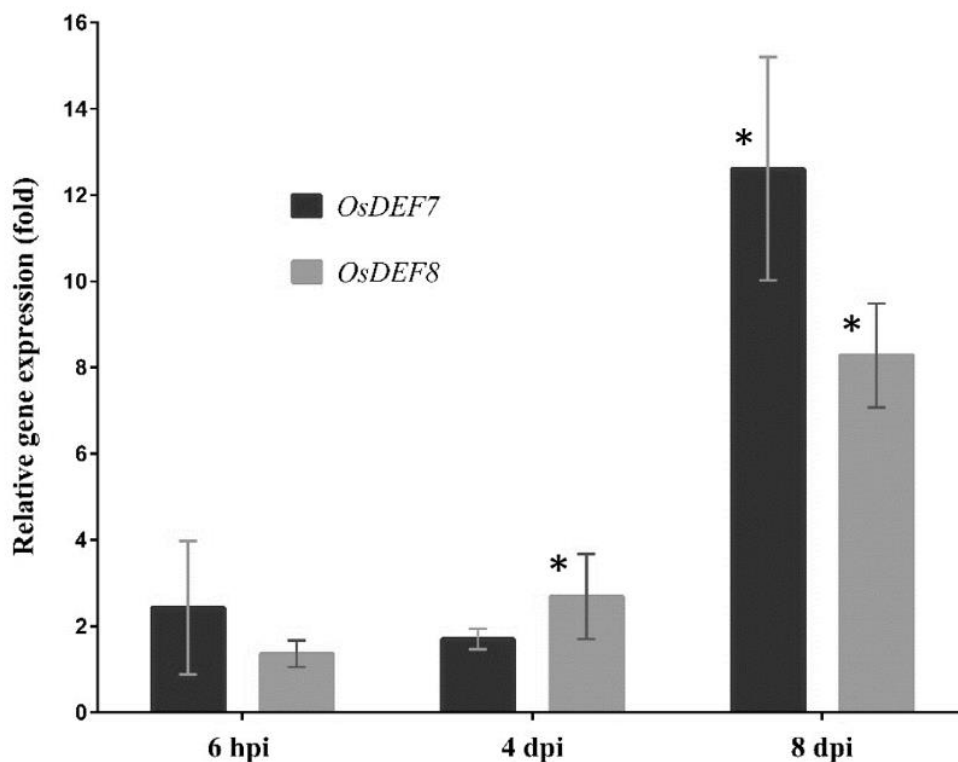


Figure 13. Relative gene expression of *OsDEF7* and *OsDEF8* in Thai jasmine rice after infected by *X. oryzae* pv. *oryzae*. determined by quantitative RT-PCR. Gene expression data were normalized to the standard *EF1 $\alpha$*  gene and were calculated to relatively compare with the controls at each time point. Each value represents the mean  $\pm$  SD (n = 3) with the asterisks indicate significant differences (P < 0.05) compared to their respective controls. (hpi, hours post-infection; dpi, days post-infection)

### 3.4 Subcellular localization

According to the prediction of protein subcellular localization using WoLF PSORT (Horton et al., 2007; <http://wolfsort.org>), *OsDEF7* and *OsDEF8* were predicted to be localized to the extracellular compartment. To confirm the localization of both *OsDEFs* in plant, GFP was fused to the peptide's C terminus in a binary vector under 35S promoter. After that, either *OsDEF7::GFP* or *OsDEF8::GFP* fusion protein was

transiently expressed in the leaves of *N. benthamiana* and tobacco BY2-cell by agrobacterium-mediated gene transfer. For *N. benthamiana* leaf, at five days after infiltration, leaf cells were analyzed using confocal laser scanning microscopy. Most cells showed GFP fluorescence only in the periphery of the cell (Figure 14), indicating either extracellular or membrane localization of the fusion proteins compared with GFP control which localized in nucleus and periphery of the cell (Salinas *et al.*, 2006; Bartetzko *et al.*, 2009). In addition, we did not find any membrane-anchore sequences in both DEFs.

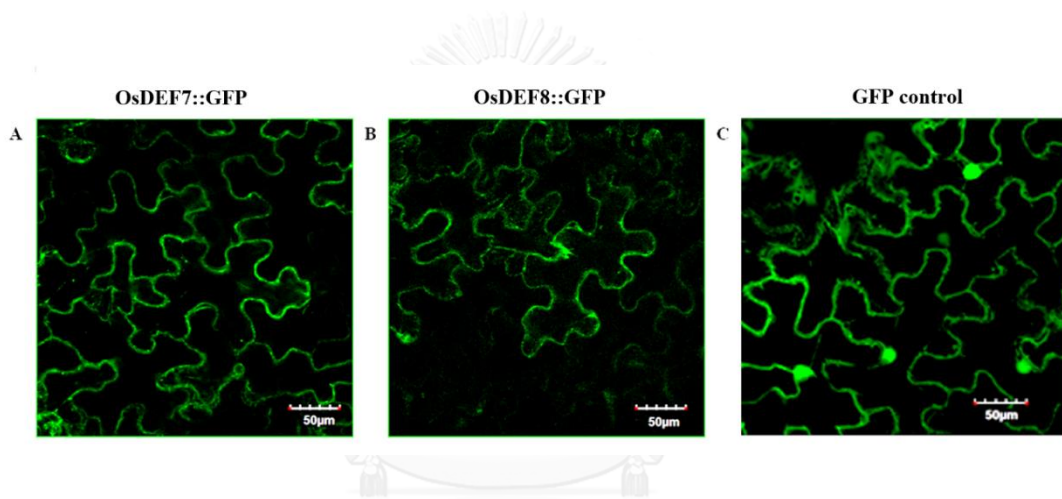


Figure 14. Confocal images showing fluorescence signals from *Agrobacterium* infiltrated leaf epidermal cells. *N. benthamiana* leaves were agroinfiltrated with (A) OsDEF7::GFP, (B) OsDEF8::GFP, and (C) GFP control. Scale bars represent 50  $\mu\text{m}$ .

To demonstrate if the peptides are localized to cell membrane/cell wall or secreted, transient expression in BY2-cell was performed. OsDEF7::GFP and OsDEF8::GFP co-incubated with P19, which is a suppressor for RNAi, showed higher fluorescence in the culture medium under UV light than OsDEF::GFP without P19 while GFP control did not show fluorescence in the culture medium (Figure 15). These results strongly confirm that both OsDEFs are secreted into the extracellular compartment and P19 helps for higher protein production.

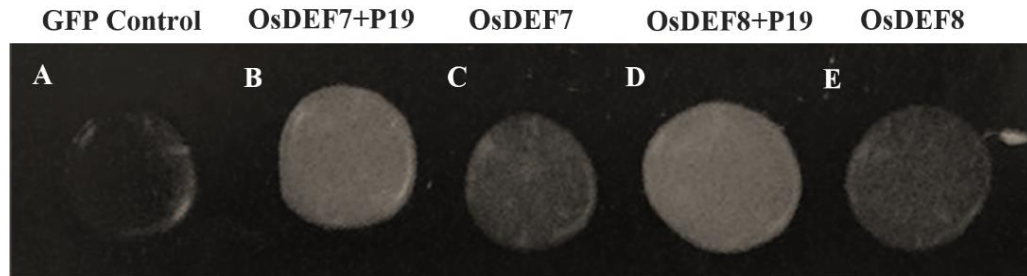


Figure 15. Fluorescence observed in the culture medium of transiently transformed BY2-cell with (A) 35S:GFP, (B) 35S:OsDEF7::GFP co-infected with 35S:P19, (C) 35S:OsDEF7, (D) 35S:OsDEF8::GFP co-infected with 35S:P19, and (E) 35S:OsDEF8

### 3.5 Production of recombinant rice AMPs in different system of plant tissues

#### 3.5.1 Hairy roots

To produce the recombinant DEFs in plants, *OsDEF7* or *OsDEF8* were separately cloned into the pGWB2 expression vector which has the CaMV 35S promoter. We firstly evaluate the production from *N. benthamiana* hairy roots. *A. rhizogenes* harboring the gene of interest was infected into leaf of *N. benthamiana* for generating transgenic root. After 1-2 month(s), transformed roots were generated (Figure 16A) and transferred into a selection medium plate (Figure 16B). Finally, the selected hairy roots were cultured in the liquid medium (Figure 16C). According to the previous subcellular localization experiment, we expected to detect OsDEF proteins in the culture medium. Unfortunately, DEFs cannot be detected on SDS-PAGE analysis (data not show). Subsequently, RNAs of transgenic roots were extracted and cDNA was synthesized for investigation of the RNA expression. Although we cannot detected protein on SDS-PAGE, the expression of mRNA can be detected (Figure 17), suggesting that the transgenic roots expressed the genes.

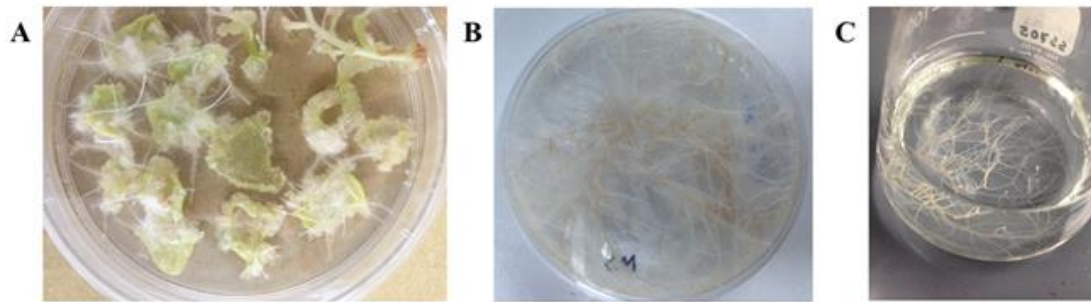


Figure 16. (A) The hairy root generated from *N. benthamiana* leaves on MS agar containing 500 µg/ml of cefotaxime. (B) The transgenic hairy root on a selection MS agar plate containing 50 µg/ml kanamycin and 50 µg/ml hygromycin B. (C) The transgenic hairy root cultured in the MS liquid medium

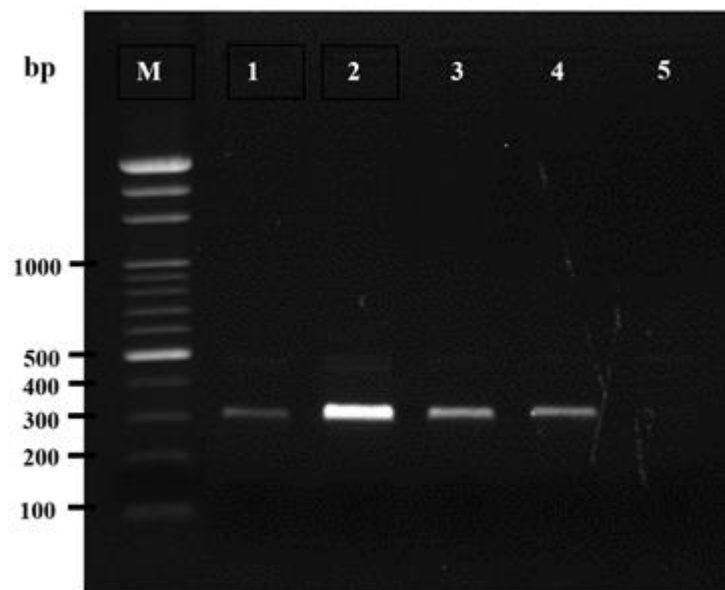


Figure 17. Gel electrophoresis results of PCR amplification of *OsDEF* genes from cDNAs of respective transgenic hairy roots. Gene products were visualised on 1 % agarose gel. Lane M: 100 bp DNA ladder marker; Lane 1: pGWB2-*OsDEF7* line 1; Lane 2: pGWB2-*OsDEF7* line 2; Lane 3: pGWB2-*OsDEF8* line 1; Lane 4: pGWB2-*OsDEF8* line 2; Lane 5: negative control

### 3.5.2 BY-2 cells

Since the peptide production from the transgenic hairy roots was unsuccessful, the peptide production from BY-2 suspension cells was performed. Either *OsDEF7* or *OsDEF8* was cloned into the pEAQ3 expression vector containing His-tag. *A. tumefaciens* harboring the gene of interest was transformed into BY-2 cell. After 1-2 month(s), transformed BY-2 cells were grown and transferred into selection medium plates (Figure 18A). Then, the transgenic BY-2 was cultured in the liquid medium containing a suitable antibiotic. (Figure 18B). We expected to detect *OsDEF* proteins in the culture medium according to our subcellular localization. Unfortunately, *DEFs* cannot be detected by Western blot analysis. Subsequently, RNA of transformed BY-2

cell was extracted and synthesized cDNA for investigation of the RNA expression. Although we could not detect any protein, the expression of mRNA can be detected (Figure 19) as same as that of the transgenic hairy root.

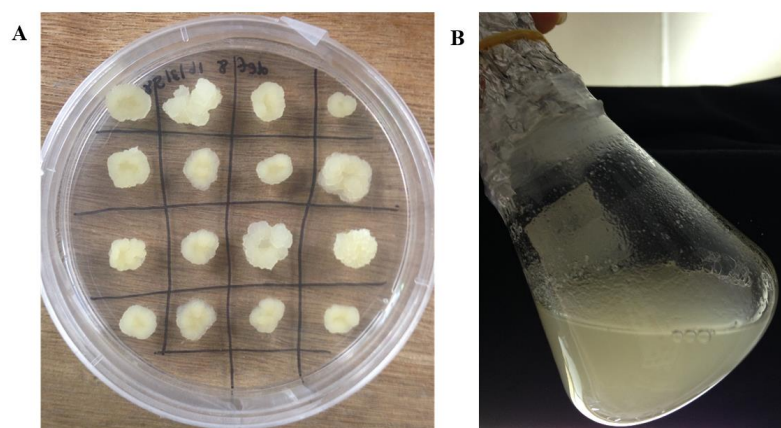


Figure 18. (A) Transgenic BY-2 cell on a selection medium plate (2 weeks after transfer to the plate) (B) Transgenic BY-2 in liquid medium at day 7 after inoculation to the liquid medium.

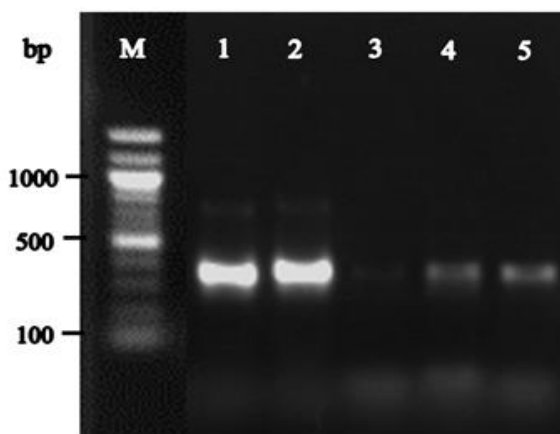
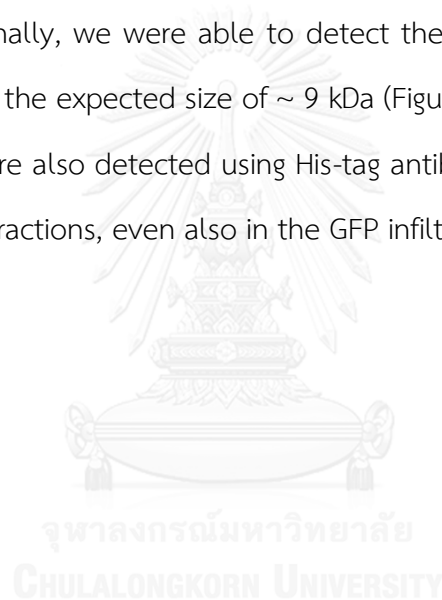


Figure 19. Gel electrophoresis results of PCR amplification of *OsDEF* genes from cDNAs of respective transgenic BY-2 cell. Gene products were visualised on 1% agarose gel. Lane M: DNA ladder; Lane 1: pEAQ3-*OsDEF7* line 1; Lane 2: pEAQ3-*OsDEF7* line 2; Lane 3: negative control; Lane 4: pEAQ3-*OsDEF8* line 1; Lane 5: pEAQ3-*OsDEF8* line 2



### 3.5.3 *N. benthamiana* leaves

To confirm the transient expression of recombinant DEFs, the infiltration of *N. benthamiana* leaves was performed. *A. tumefaciens* harboring either pEAQ3-*OsDEF7* or pEAQ3-*OsDEF8* was infiltrated into leaves and then crude proteins were extracted from leaves. Though, the OsDEFs could not be detected by western blot analysis. Since DEF has a strong cationic charge, we thought that DEFs might form strong interactions with the cell wall compartment. To relocalize OsDEFs subcellularly, we designed another construct targeting the OsDEFs to the ER compartment; pEAQ1-*OsDEF*-His-SEKDEL. Finally, we were able to detect the recombinant peptides which showed the bands at the expected size of ~ 9 kDa (Figure 20). However, the unknown bands of ~17 kDa were also detected using His-tag antibody in crude protein extracts and purified protein fractions, even also in the GFP infiltrated leaves.



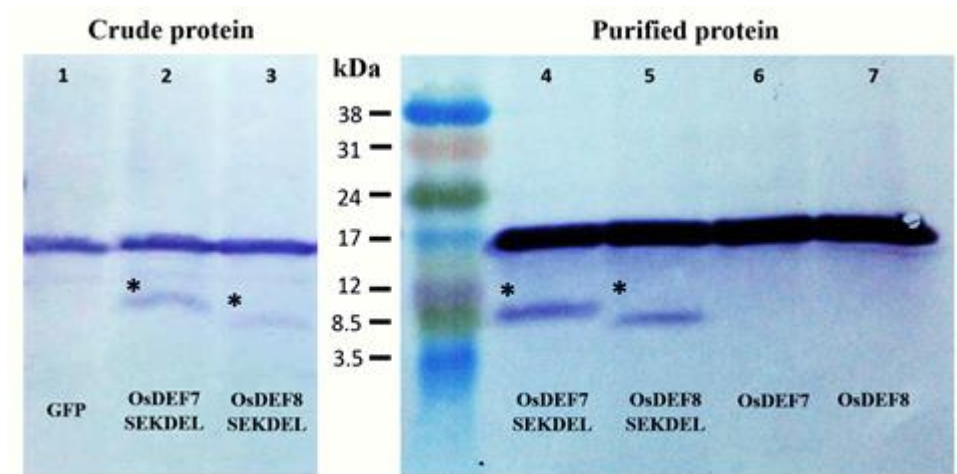


Figure 20. Western blot analysis of crude and purified protein from *N. benthamiana* leaves after 5 days infiltration. Total soluble protein was extracted from leaves 0.1 g/ml fresh weight in Tris-HCl buffer. For purified protein, 2 ml of crude protein was purified using His Spin Trap and loaded 20  $\mu$ l of purified protein (lane 4-7) or crude protein (lane 1-3) per lane. Proteins were separated by 12% SDS-PAGE before transfer to PVDF membrane. Recombinant proteins were detected using Pierce His tag mouse primary antibody diluted 1:2000 followed by the alkaline phosphatase conjugated goat anti-mouse IgG secondary antibody diluted 1:1000. The signal was detected by BCIP/NBT.

### 3.6 *In planta* antimicrobial activity of recombinant OsDEF7 and OsDEF8

Although *in vitro* antimicrobial activity from recombinant OsDEF7 and OsDEF8 produced from *E. coli* was confirmed. Here, we performed *in planta* inhibitory activity test. *A. tumefaciens* harboring either pEAQ3-OsDEFs or pEAQ1-OsDEFs-SEKDEL were co-infiltrated with *X. campestris* into *N. benthamiana* leaf. After 9 days, both secreted-OsDEFs and ER-localized OsDEFs exhibited the disease resistance comparing with both controls which were co-infiltrated *X. campestris* and *A. tumefaciens* with either empty vector or non-transformed (Figure 21).

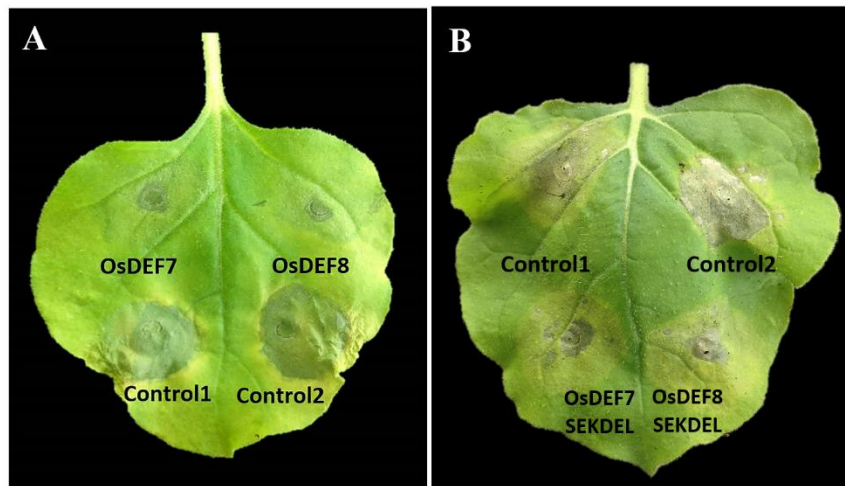


Figure 21. *A. tumefaciens* harboring (A) pEAQ3-OsDEF7, pEAQ3-OsDEF8 (B) pEAQ1-OsDEF7-SEKDEL, pEAQ1-OsDEF8-SEKDEL, blank pEAQ3 vector (control 1) or none (control 2) only was co-infiltrated with a ratio of 1:1 with *X. campestris* into *N. benthamiana* leaf. This photo was taken at 9 days after infiltration.

## CHAPTER IV

### DISCUSSION

DEFs are AMPs that are part of the innate immune system, contributing to the first line of defense against invading pathogens. Post-translational modifications such as disulfide bond formation and folding are critical for maintaining AMP structure and biological activity. These modifications can be performed properly by plant-based systems (Holaskova *et al.*, 2015). Although our group successfully produced the recombinant OsDEF7 and OsDEF8 in *E. coli* and the proteins exhibited antimicrobial activities, detailed characterizations and alternative production system have never been reported. In this thesis, I performed characterization of these genes and investigated their expression in plant-based systems.

#### ***OsDEF7* and *OsDEF8* show subspecies-specific expression pattern**

To further characterize *OsDEF7* and *OsDEF8*, additional *in silico* analysis was performed using the databases in which most information were from *Oryza sativa* L. ssp. *japonica* cv. Nipponbare. The *in silico* analyses showed that the expressions of *OsDEFs* are most highly expressed in seed and inflorescence while the common target organ, leaf, for phytopathogen infection showed very low expression (Tantong *et al.*, 2016). Some DEFs are also supposed to play a role in protection of the vulnerable germinating seed against pathogen. For example, RsAFP1 and RsAFP2 from radish seeds are preferentially released during seed germination after disruption of the seed coat and the amount of released proteins is sufficient to create a microenvironment around the seed in which fungal growth is suppressed (Terras *et al.*, 1995). The results from quantitative RT-PCR analysis in Thai jasmine rice also showed highly express in seed and inflorescence. Although *OsDEF7* and *OsDEF8* showed similar gene expression patterns in developmental stages with the database while it was different between

organs root and leaf. These findings suggest a difference in gene regulation between subspecies.

### ***OsDEF7* and *OsDEF8* are involved in pathogen response**

Although *OsDEF7* and *OsDEF8* showed relatively low expression in the leaf, they were upregulated upon infection with *X. oryzae* pv. *oryzae* when compared to the controls. Previously, *in silico* analysis showed that *OsDEF7* and *OsDEF8* were also upregulated when infected with rice blast fungus, *M. oryzae* at 48 hpi and rice bacterial blight, *X. oryzae* pv. *oryzae* at 24 hpi (Tantong *et al.*, 2016). However, quantitative RT-PCR results in this thesis demonstrated that both genes were upregulated at very late infection stage (after 4 dpi). Taken together with the low expression of *OsDEFs* in the leaves and the late upregulation, this might be a reason that rice plants are susceptible to *X. oryzae* pv. *oryzae* and also other pathogens. If there is any process to induce the expression of antimicrobial *OsDEFs* much quicker, it might be possible that rice plant will be tolerant to the pathogens. It has been reported in many plants such as pea, tobacco, *Arabidopsis*, and spruce that *DEFs* gene are also upregulated upon pathogen infection (Lay and Anderson, 2005).

### ***In silico* expression analysis hints the involvement of *OsDEF7* and *OsDEF8* in various functions**

*DEFs* might be involved in other functions. Since in this study using the Genevestigator tool, we showed that the expression levels of these two *OsDEF* genes were affected by abiotic stress including drought, cold, imbibition, anoxia, and dehydration. This observation suggested that *OsDEFs* might be involved in other processes and was supported by several reports. A *DEF*, *Tad1*, isolated from the crown tissues of winter wheat (*Triticum aestivum*) was induced during cold acclimation (Koike *et al.*, 2002). Strong accumulation of *CADEF1* mRNA in pepper leaves was activated in

response to wounding, high salinity and drought (Do *et al.*, 2004). Moreover, tomato DEF *DEF2* is expressed during early flower development. DEF mRNA abundance, peptide expression and processing are differentially regulated in developing flowers. Antisense suppression or constitutive overexpression of *DEF2* reduces pollen viability and seed production (Stotz *et al.*, 2009). In *Zea mays*, the DEF *ZmES4* is demonstrated to be expressed in the synergid cells and shown to be involved in pollen tube bursting by activating the potassium channel *KZM1* (Amien *et al.*, 2010). Furthermore, we have previously found using *in silico* analysis that *OsDEF7* and *OsDEF8* are coexpressed with gibberellin-regulated protein (Tantong *et al.*, 2016). The question is whether or not these hormones/small molecules play a role in the expression of AMP when plants defend themselves against disease. There is an evidence showing that plant hormones indeed regulate the expression of AMP. A tomato DEF, *tgas118*, seems to be regulated by gibberellins throughout flower development (Van den Heuvel *et al.*, 2001). However, molecular details how DEF works have not been completely understood.

### ***OsDEF7* and *OsDEF8* are secreted to extracellular compartment**

Subcellular localization of *OsDEF* strongly supports the involvement in pathogen response since they are secreted to extracellular that could interact with pathogen first. Secretory proteins have to pass through endoplasmic reticulum for correct folding and assembly of proteins (Vitale and Denecke, 1999). Expression of AMPs in the apoplast is preferred because most pathogenic microorganisms are present in the extracellular space during the early stages of infection. *OsDEFs* localized in the apoplastic region of the plant tissue could interact with the microbial membrane leading to membrane destabilization, and reduced proliferation of pathogen in the plant tissue, thus imparting enhanced disease resistance to phytopathogens (Jha *et al.*, 2009). Moreover, the result from transient BY-2 cell showed that P19 could help for transient protein expression. Previous studies showed that p19 of *Cymbidium ringspot*

virus (CymRSV) inhibits RNA silencing via its small RNA-binding activity *in vivo*. Small RNAs bound by p19 *in planta* are bona fide double-stranded siRNAs and they are silencing competent in the *in vitro* RNA-silencing system. P19 also suppresses RNA silencing in the heterologous *Drosophila in vitro* system by preventing siRNA incorporation into RISC (Lakatos *et al.*, 2004). Hence, these results from transient expression *N. benthamiana* leaf and transient BY-2 cell strongly confirm that both OsDEFs are secreted into extracellular compartment and P19 helps for higher protein production.

### **OsDEF7 and OsDEF8 are successfully produced in *N. benthamiana* leaves**

OsDEF7 and OsDEF8 were clearly demonstrated to be localized in the extracellular compartment. However, they could not be detected in the medium of transformed hairy roots and BY-2 cell cultures, even though the expression of mRNA was found. This might be because the low level of protein expression and/or there is a strong interaction with cell wall component. How OsDEF::GFP can be secreted but OsDEF could not. It might be explained that OsDEF::GFP could not form a strong interaction with cell wall component since GFP is a large protein (~27 kDa) and OsDEFs are just only 6 kDa. Therefore, any interactions that retain OsDEFs to the cells could be disrupted. Subsequently, I tried another plant system, *N. benthamiana* leaves, to express both peptides. After protein purification, I still cannot detect the OsDEF proteins. From previous study, it is suggested that cationic AMPs tend to be difficult to detect and isolate from complex plant tissue (Company *et al.*, 2014). They, therefore, expressed synthetic linear AMP BP100, a short cecropin A-melittin hybrid AMP, with the addition of SEKDEL (ER retention signal) at C-terminal of which preserved its antimicrobial activity and provided easier detection (Company *et al.*, 2014). Then, I optimized codon of *OsDEF* for *N. benthamiana* and added His-tag together with SEKDEL peptide. The result from Western blot analysis showed that both OsDEFs can

be detected in monomer forms. This is in contrast to our previous recombinant OsDEF productions in *E. coli*, that OsDEF7 and OsDEF8 formed homodimers around 15 kDa (Tantong *et al.*, 2016). Even though the ER-localized OsDEFs were detected as monomers, it cannot be ruled out that the secreted OsDEFs would also form monomers. Nevertheless, Stover *et al.* (2013) suggested that proteins in *in vitro* usually form large aggregates that could hinder their functions, whereas *in planta*, AMPs likely exist as discrete molecules or much smaller aggregates. This might explain how OsDEF7 and OsDEF8 produced *in planta* form monomers. It has been found that most DEFs are produced as monomers (Kovalskaya and Hammond, 2009; De Beer and Vivier, 2011). However, a previous study reported that dimerization of NaD1, a DEF from *N. alata* flowers, enhances its antifungal activity when compared to the monomeric protein (Lay *et al.*, 2012). Therefore, it can be concluded that different DEFs might form differently either as monomers or dimers, possibly depending on their primary amino acid sequences. Definitely, their overall structures would affect antimicrobial activity.

Although the purification of ER-localized OsDEFs has been performed using polyhistidine affinity tag, unfortunately, there was an unexpected band around 17 kDa which is clearly a protein from *N. benthamiana* leaf that can bind with His-tag antibody. To improve the purification, gel filtration chromatography might be used to separate OsDEFs from the unknown protein. Nevertheless, the purified proteins yielded in a low concentration and they might not be sufficient to perform *in vitro* activity testing so *in planta* activity testing was preferred. Since the previous works reported that *X. campestris* and *X. oryzae* are considered as non-adaptive pathogens for *N. benthamiana* but they could induce a hypersensitive response in this plant (Metz *et al.*, 2005; Gonzalez *et al.*, 2007). I demonstrated that both OsDEFs show *in planta* inhibition against *X. campestris* in *N. benthamiana* leaves. It has been reported that many AMPs are more effective *in planta* than *in vitro* (Cary *et al.*, 2000; Visser *et al.*, 2012). These observations suggest that AMP may require post-translational processing



to achieve functional conformation and to contribute to a better activity of a peptide (Holaskova *et al.*, 2015). Also, Stover *et al.* (2013) suggested a higher activity of AMP *in planta* because of an ability to form smaller AMP aggregates, in contrast to larger aggregates formed *in vitro* that would interfere their inhibitory functions. Therefore, transgenic plants overexpressing OsDEFs could develop resistance against pathogen infection.

Various reports on DEFs demonstrated the heterologous DEF production in diverse hosts, such as bacteria, yeasts, and plants, mainly for research purposes. Among bacteria, *E. coli* is the most commonly used for DEF expression. *Arabidopsis halleri* foliar DEF (Marquès *et al.*, 2009), *Tephrosia villosa* DEF (Vijayan *et al.*, 2008) and DEF from sweet potato (Huang *et al.*, 2008; Kovalskaya *et al.*, 2009) have been expressed using this heterologous system that benefits from a wealth of commercially available strains and plasmids, besides short generation times. Plant DEFs expression in yeast has mainly been performed using the yeasts *Saccharomyces cerevisiae* or *Pichia pastoris* (Cabral *et al.*, 2003; Kant *et al.*, 2009). Heterologous DEF expression has also been tested in plants (Jha *et al.*, 2009; Anuradha *et al.*, 2008; Abdallah *et al.*, 2010). From this study, OsDEF7 and OsDEF8 were successfully expressed in plant-based systems but they were produced in low concentrations and difficult to extract and purify when comparing with the expression in *E. coli* (Tantong *et al.*, 2016). There are a few suggestions for production improvement of OsDEF7 and OsDEF8. Since we used His-tag for purification and got the unexpected band on Western blot so if there is a DEF antibody might can solve this problem. Even though we cannot get highly purified peptides, it is possible that we can use crude protein of OsDEF from transient expression to test *in vitro* activity but we have to make sure that crude proteins contain no *Agrobacterium* after the infiltration. In Addition, the expression vector could be changed for a higher protein production, although the vector used in this study was claimed for a very high protein production (Sainsbury *et al.*, 2009; Peyret and

Lomonossoff, 2013). Generating transgenic plants might also be a proper way for expression of OsDEF7 and OsDEF8 because there are many previous studies successfully expressing DEFs in transgenic plants for example; overexpression of DmAMP1 in *O. sativa* exhibited antimicrobial activities against *M. oryzae* and *Rhizoctonia solani* (Jha *et al.*, 2009), the transgene BJD in *N. tabacum* could resist *Fusarium moniliforme* and *Phytophthora parasitica* pv. *nicotianae* (Anuradha *et al.*, 2008). In term of application, transient expression in *N. benthamiana* leaf might be suitable for screening other AMPs because of short-time period expression. Furthermore, Wu *et al.* (2011) expressed Trx-Ace-AMP1 from onion in *E. coli*. Trx-Ace-AMP1 protein was spreaded together with a pathogen *A. solani* causing early blight disease onto tomato leaves with a cotton swab. One week after inoculation, leaves treated with Trx-Ace-AMP1 had less disease symptoms compared with control. If the production of OsDEF7 and OsDEF8 were improved to achieve high concentration of protein, we might be able to use them to spray onto the crop field for increasing resistance against phytopathogens.

## CHAPTER V

### CONCLUSIONS

In this study, the alternative system for OsDEF7 and OsDEF8 productions changing from bacteria to plants was evaluated. Gene expression profiles and subcellular localization of these peptides were also performed to provide additional *in vivo* functions of both peptides.

The nucleotide sequences of Thai jasmine rice *Oryza sativa* L. ssp. *indica* cv. KDML105 and Japanese rice *Oryza sativa* L. ssp. *japonica* cv. Nipponbare showed 100% identity. Although the similar gene expression patterns at developmental stages were found between, the OsDEF7 expression levels in roots and leaves were shown to be different suggesting a difference in gene regulation between subspecies. In addition, the infected Thai jasmine rice by *X. oryzae* pv. *oryzae* showed the upregulations of OsDEF7 and OsDEF8 suggesting the involvement in pathogen response. Moreover, *in silico* gene expression analyses using Geneinvestigator tool confirm that the expression levels of these two *OsDEF* genes were affected by abiotic stress including drought, cold, imbibition, anoxia, and dehydration.

For recombinant peptide production, both OsDEFs were shown to be localized to the extracellular compartment using GFP fusion approach. Even though OsDEFs cannot be detected in the medium of transformed hairy root of *N. benthamiana* and tobacco BY-2 cell culture, the expression of mRNA was found suggesting that OsDEFs might be produced but not secreted. Nevertheless, the ER-retained OsDEFs in *N. benthamiana* leaves was successfully produced at low concentrations but both secreted OsDEFs and ER-retained OsDEFs exhibit the disease resistance *in planta* when infected with *X. campestris*. These results provide information to develop an alternative host producing these secreted AMPs.

## REFERENCES

Amien, S., Kliwer, I., Márton, M.L., Debener, T., Geiger, D., Becker, D., Dresselhaus, T., 2010. Defensin-like ZmES4 mediates pollen tube burst in maize via opening of the potassium channel KZM1. *PLoS Biology* 8, e1000388.

Anuradha, T.S., Divya, K., Jami, S., Kirti, P., 2008. Transgenic tobacco and peanut plants expressing a mustard defensin show resistance to fungal pathogens. *Plant Cell Reports* 27, 1777-1786.

Aviezer, D., Brill-Almon, E., Shaaltiel, Y., Hashmueli, S., Bartfeld, D., Mizrachi, S., Liberman, Y., Freeman, A., Zimran, A., Galun, E., 2009. A plant-derived recombinant human glucocerebrosidase enzyme—a preclinical and phase I investigation. *PLoS One* 4, e4792.

Bahramnejad, B., Erickson, L., Chuthamat, A., Goodwin, P., 2009. Differential expression of eight defensin genes of *N. benthamiana* following biotic stress, wounding, ethylene, and benzothiadiazole treatments. *Plant Cell Reports* 28, 703-717.

Banerjee, S., Singh, S., Rahman, L.U., 2012. Biotransformation studies using hairy root cultures—a review. *Biotechnology Advances* 30, 461-468.

Berrocal-Lobo, M., Segura, A., Moreno, M., López, G., Garcia-Olmedo, F., Molina, A., 2002. Snakin-2, an antimicrobial peptide from potato whose gene is locally induced by wounding and responds to pathogen infection. *Plant Physiology* 128, 951-961.

Broekaert, W.F., Terras, F., Cammue, B., Osborn, R.W., 1995. Plant defensins: novel antimicrobial peptides as components of the host defense system. *Plant Physiology* 108, 1353.

Brogden, K.A., 2005. Antimicrobial peptides: pore formers or metabolic inhibitors in bacteria? *Nature Reviews Microbiology* 3, 238-250.

Cabral, K.M., Almeida, M.S., Valente, A.P., Almeida, F.C., Kurtenbach, E., 2003. Production of the active antifungal *Pisum sativum* defensin 1 (Psd1) in *Pichia pastoris*: overcoming the inefficiency of the STE13 protease. *Protein Expression and Purification* 31, 115-122.

Cammue, B., De Bolle, M., Terras, F., Proost, P., Van Damme, J., Rees, S.B., Vanderleyden, J., Broekaert, W.F., 1992. Isolation and characterization of a novel class of plant antimicrobial peptides from *Mirabilis jalapa* L. seeds. *Journal of Biological Chemistry* 267, 2228-2233.

Carlson, A., Skadsen, R., Kaeppler, H.F., 2006. Barley hordothionin accumulates in transgenic oat seeds and purified protein retains anti-fungal properties *in vitro*. *In Vitro Cellular and Developmental Biology* 42, 318-323.

Carvalho, A.O., Ferreira, B.S., Branco, A.T., Okorokova-Facanha, A.L., Gomes, V.M., 2006. Cloning and characterization of a cDNA encoding a cowpea seed defensin and analysis of its expression. *Protein and Peptide Letters* 13, 1029-1036.

Cary, J.W., Rajasekaran, K., Jaynes, J.M., Cleveland, T.E., 2000. Transgenic expression of a gene encoding a synthetic antimicrobial peptide results in inhibition of fungal growth *in vitro* and *in planta*. *Plant Science* 154, 171-181.

Castro, M.S., Fontes, W., 2005. Plant defense and antimicrobial peptides. *Protein and Peptide Letters* 12, 11-16.

Chagolla-Lopez, A., Blanco-Labra, A., Patthy, A., Sánchez, R., Pongor, S., 1994. A novel alpha-amylase inhibitor from amaranth (*Amaranthus hypocondriacus*) seeds. *Journal of Biological Chemistry* 269, 23675-23680.

Charvolin, D., Douliez, J.P., Marion, D., Cohen-Addad, C., Pebay-Peyroula, E., 1999. The crystal structure of a wheat nonspecific lipid transfer protein (ns-LTP1) complexed with two molecules of phospholipid at 2.1 Å resolution. *European Journal of Biochemistry* 264, 562-568.

Choi, M.-S., Kim, Y.-H., Park, H.-M., Seo, B.-Y., Jung, J.-K., Kim, S.-T., Kim, M.-C., Shin, D.-B., Yun, H.-T., Choi, I.-S., 2009. Expression of BrD1, a plant defensin from *Brassica rapa*, confers resistance against brown planthopper (*Nilaparvata lugens*) in transgenic rices. *Molecules and Cells* 28, 131-137.

Chouabe, C., Eyraud, V., Da Silva, P., Rahioui, I., Royer, C., Soulage, C., Bonvallet, R., Huss, M., Gressent, F., 2011. New mode of action for a knottin protein bioinsecticide pea albumin 1 subunit b (PA1b) is the first peptidic inhibitor of V-ATPase. *Journal of Biological Chemistry* 286, 36291-36296.

Colilla, F.J., Rocher, A., Mendez, E., 1990.  $\gamma$ -Purothionins: amino acid sequence of two polypeptides of a new family of thionins from wheat endosperm. *FEBS Letters* 270, 191-194.

Company, N., Nadal, A., Paz, L., Martínez, S., Rasche, S., Schillberg, S., Montesinos, E., Pla, M., 2014. The production of recombinant cationic  $\alpha$ -helical antimicrobial peptides in plant cells induces the formation of protein bodies derived from the endoplasmic reticulum. *Plant Biotechnology Journal* 12, 81-92.

Cordts, S., Bantin, J., Wittich, P.E., Kranz, E., Lörz, H., Dresselhaus, T., 2001. *ZmES* genes encode peptides with structural homology to defensins and are specifically expressed in the female gametophyte of maize. *Plant Journal* 25, 103-114.

Daniell, H., Streatfield, S.J., Wycoff, K., 2001. Medical molecular farming: production of antibodies, biopharmaceuticals and edible vaccines in plants. *Trends in Plant Science* 6, 219-226.

De Beer, A., Vivier, M.A., 2008. Vv-AMP1, a ripening induced peptide from *Vitis vinifera* shows strong antifungal activity. *BMC Plant Biology* 8, 75.

De Beer, A., Vivier, M.A., 2011. Four plant defensins from an indigenous South African *Brassicaceae* species display divergent activities against two test pathogens despite high sequence similarity in the encoding genes. *BMC Research Notes* 4, 459.

De Bolle, M.F., Osborn, R.W., Goderis, I.J., Noe, L., Acland, D., Hart, C.A., Torrekens, S., Van Leuven, F., Broekaert, W.F., 1996. Antimicrobial peptides from *Mirabilis jalapa* and *Amaranthus caudatus*: Expression, processing, localization and biological activity in transgenic tobacco. *Plant Molecular Biology* 31, 993-1008.

De Coninck, B., Cammue, B.P., Thevissen, K., 2013. Modes of antifungal action and in planta functions of plant defensins and defensin-like peptides. *Fungal Biology Reviews* 26, 109-120.

De Coninck, B., Sels, J., Venmans, E., Thys, W., Goderis, I.J., Carron, D., Delauré, S.L., Cammue, B., De Bolle, M.F., Mathys, J., 2010. Arabidopsis thaliana plant defensin AtPDF1.1 is involved in the plant response to biotic stress. *New Phytologist* 187, 1075-1088.

De Oliveira Carvalho, A., Gomes, V.M., 2009. Plant defensins—prospects for the biological functions and biotechnological properties. *Peptides* 30, 1007-1020.

Do, H.M., Lee, S.C., Jung, H.W., Sohn, K.H., Hwang, B.K., 2004. Differential expression and in situ localization of a pepper defensin (*CADEF1*) gene in response to pathogen

infection, abiotic elicitors and environmental stresses in *Capsicum annuum*. Plant Science 166, 1297-1305.

Fischer, R., Stoger, E., Schillberg, S., Christou, P., Twyman, R.M., 2004. Plant-based production of biopharmaceuticals. Current Opinion in Plant Biology 7, 152-158.

Furukawa, T., Sakaguchi, N., Shimada, H., 2006. Two *OsGASR* genes, rice GAST homologue genes that are abundant in proliferating tissues, show different expression patterns in developing panicles. Genes & Genetic Systems 81, 171-180.

Gao, A.-G., Hakimi, S.M., Mittanck, C.A., Wu, Y., Woerner, B.M., Stark, D.M., Shah, D.M., Liang, J., Rommens, C.M., 2000. Fungal pathogen protection in potato by expression of a plant defensin peptide. Nature Biotechnology 18, 1307-1310.

Gao, G.-H., Liu, W., Dai, J.-X., Wang, J.-F., Hu, Z., Zhang, Y., Wang, D.-C., 2001. Solution Structure of PAFP-S: A New Knottin-Type Antifungal peptide from the seeds of *Phytolacca americana*. Biochemistry 40, 10973-10978.

Giuliani, A., Pirri, G., Bozzi, A., Di Giulio, A., Aschi, M., Rinaldi, A., 2008. Antimicrobial peptides: natural templates for synthetic membrane-active compounds. Cellular and Molecular Life Sciences 65, 2450-2460.

Gonzalez, C., Szurek, B., Manceau, C., Mathieu, T., Séré, Y., Verdier, V., 2007. Molecular and pathotypic characterization of new *Xanthomonas oryzae* strains from West Africa. Molecular Plant-Microbe Interactions 20, 534-546.

Grabowski, G.A., Golembo, M., Shaaltiel, Y., 2014. Taliglucerase alfa: an enzyme replacement therapy using plant cell expression technology. Molecular Genetics and Metabolism 112, 1-8.



Gran, L., 1973. On the effect of a polypeptide isolated from “Kalata-Kalata” (*Oldenlandia affinis* DC) on the oestrogen dominated uterus. *Basic & Clinical Pharmacology & Toxicology* 33, 400-408.

Hammami, R., Ben Hamida, J., Vergoten, G., Fliss, I., 2009a. PhytAMP: a database dedicated to antimicrobial plant peptides. *Nucleic Acids Research* 37, D963-968.

Hammami, R., Hamida, J.B., Vergoten, G., Lacroix, J.M., Slomianny, M.C., Mohamed, N., Fliss, I., 2009b. A new antimicrobial peptide isolated from *Oudneya africana* seeds. *Microbiology and Immunology* 53, 658-666.

Higashiyama, T., 2010. Peptide signaling in pollen–pistil interactions. *Plant and Cell Physiology* 51, 177-189.

Holaskova, E., Galuszka, P., Frebort, I., Oz, M.T., 2015. Antimicrobial peptide production and plant-based expression systems for medical and agricultural biotechnology. *Biotechnology Advances* 33, 1005-1023.

Hruz, T., Laule, O., Szabo, G., Wessendorp, F., Bleuler, S., Oertle, L., Widmayer, P., Gruissem, W., Zimmermann, P., 2008. Genevestigator v3: a reference expression database for the meta-analysis of transcriptomes. *Advances in Bioinformatics* 2008.

Huang, G.-J., Lai, H.-C., Chang, Y.-S., Sheu, M.-J., Lu, T.-L., Huang, S.-S., Lin, Y.-H., 2008. Antimicrobial, dehydroascorbate reductase, and monodehydroascorbate reductase activities of defensin from sweet potato [*Ipomoea batatas* (L.) Lam. ‘tainong 57’] storage roots. *Journal of Agricultural and Food Chemistry* 56, 2989-2995.

Huang, J., Wu, L., Yalda, D., Adkins, Y., Kelleher, S.L., Crane, M., Lonnerdal, B., Rodriguez, R.L., Huang, N., 2002. Expression of functional recombinant human lysozyme in transgenic rice cell culture. *Transgenic Research* 11, 229-239.

Jain, M., Nijhawan, A., Arora, R., Agarwal, P., Ray, S., Sharma, P., Kapoor, S., Tyagi, A.K., Khurana, J.P., 2007. F-box proteins in rice. Genome-wide analysis, classification, temporal and spatial gene expression during panicle and seed development, and regulation by light and abiotic stress. *Plant Physiology* 143, 1467-1483.

Jenssen, H., Hamill, P., Hancock, R.E., 2006. Peptide antimicrobial agents. *Clinical Microbiology Reviews* 19, 491-511.

Jha, S., Chattoo, B.B., 2010. Expression of a plant defensin in rice confers resistance to fungal phytopathogens. *Transgenic Research* 19, 373-384.

Jha, S., Tank, H.G., Prasad, B.D., Chattoo, B.B., 2009. Expression of Dm-AMP1 in rice confers resistance to *Magnaporthe oryzae* and *Rhizoctonia solani*. *Transgenic Research* 18, 59-69.

Kader, J.-C., 1996. Lipid-transfer proteins in plants. *Annual Review of Plant Biology* 47, 627-654.

Kamimori, H., Hall, K., Craik, D.J., Aguilar, M.-I., 2005. Studies on the membrane interactions of the cyclotides kalata B1 and kalata B6 on model membrane systems by surface plasmon resonance. *Analytical Biochemistry* 337, 149-153.

Kant, P., Liu, W.-Z., Pauls, K.P., 2009. PDC1, a corn defensin peptide expressed in *Escherichia coli* and *Pichia pastoris* inhibits growth of *Fusarium graminearum*. *Peptides* 30, 1593-1599.

Kanzaki, H., Nirasawa, S., Saitoh, H., Ito, M., Nishihara, M., Terauchi, R., Nakamura, I., 2002. Overexpression of the wasabi defensin gene confers enhanced resistance to blast fungus (*Magnaporthe grisea*) in transgenic rice. *Theoretical and Applied Genetics* 105, 809-814.

Khan, R.S., Nishihara, M., Yamamura, S., Nakamura, I., Mii, M., 2006. Transgenic potatoes expressing wasabi defensin peptide confer partial resistance to gray mold (*Botrytis cinerea*). *Plant Biotechnology* 23, 179-183.

Koike, M., Okamoto, T., Tsuda, S., Imai, R., 2002. A novel plant defensin-like gene of winter wheat is specifically induced during cold acclimation. *Biochemical and Biophysical Research Communications* 298, 46-53.

Kostov, K., Christova, P., Slavov, S., Batchvarova, R., 2009. Constitutive expression of a radish defensin gene *Rs-AFP2* in tomato increases the resistance to fungal pathogens. *Biotechnology & Biotechnological Equipment* 23, 1121-1125.

Kovalskaya, N., Hammond, R.W., 2009. Expression and functional characterization of the plant antimicrobial snakin-1 and defensin recombinant proteins. *Protein Expression and Purification* 63, 12-17.

Kulkarni, M.M., McMaster, W.R., Kamysz, E., Kamysz, W., Engman, D.M., McGwire, B.S., 2006. The major surface-metalloprotease of the parasitic protozoan, *Leishmania*, protects against antimicrobial peptide-induced apoptotic killing. *Molecular Microbiology* 62, 1484-1497.

Lakatos, L., Szittyá, G., Silhavy, D., Burgyán, J., 2004. Molecular mechanism of RNA silencing suppression mediated by p19 protein of tombusviruses. *EMBO Journal* 23, 876-884.

Lay, F., Anderson, M., 2005. Defensins-components of the innate immune system in plants. *Current Protein and Peptide Science* 6, 85-101.

Lay, F.T., Brugliera, F., Anderson, M.A., 2003. Isolation and properties of floral defensins from ornamental tobacco and petunia. *Plant Physiology* 131, 1283-1293.

Lay, F.T., Mills, G.D., Poon, I.K., Cowieson, N.P., Kirby, N., Baxter, A.A., van der Weerden, N.L., Dogovski, C., Perugini, M.A., Anderson, M.A., 2012. Dimerization of plant defensin NaD1 enhances its antifungal activity. *Journal of Biological Chemistry* 287, 19961-19972.

Lee, T.-H., Kim, Y.-K., Pham, T.T.M., Song, S.I., Kim, J.-K., Kang, K.Y., An, G., Jung, K.-H., Galbraith, D.W., Kim, M., 2009. RiceArrayNet: a database for correlating gene expression from transcriptome profiling, and its application to the analysis of coexpressed genes in rice. *Plant Physiology* 151, 16-33.

Lerche, M.H., Kragelund, B.B., Bech, L.M., Poulsen, F.M., 1997. Barley lipid-transfer protein complexed with palmitoyl CoA: the structure reveals a hydrophobic binding site that can expand to fit both large and small lipid-like ligands. *Structure* 5, 291-306.

Li, Z., Zhou, M., Zhang, Z., Ren, L., Du, L., Zhang, B., Xu, H., Xin, Z., 2011. Expression of a radish defensin in transgenic wheat confers increased resistance to *Fusarium graminearum* and *Rhizoctonia cerealis*. *Functional & Integrative Genomics* 11, 63-70.

Lindbo, J.A., 2007. High-efficiency protein expression in plants from agroinfection-compatible Tobacco mosaic virus expression vectors. *BMC Biotechnology* 7, 52.

Liu, B., Hibbard, J.K., Urwin, P.E., Atkinson, H.J., 2005. The production of synthetic chemodisruptive peptides *in planta* disrupts the establishment of cyst nematodes. *Plant Biotechnology Journal* 3, 487-496.

Ma, J.K., Drake, P.M., Christou, P., 2003. The production of recombinant pharmaceutical proteins in plants. *Nature Reviews Genetics* 4, 794-805.

Magnusdottir, A., Vidarsson, H., Björnsson, J.M., Örvar, B.L., 2013. Barley grains for the production of endotoxin-free growth factors. *Trends in Biotechnology* 31, 572-580.

Maróti, G., Kereszt, A., Kondorosi, E., Mergaert, P., 2011. Natural roles of antimicrobial peptides in microbes, plants and animals. *Research in Microbiology* 162, 363-374.

Marques, L., Oomen, R., Aumelas, A., Le Jean, M., Berthomieu, P., 2009. Production of an *Arabidopsis halleri* foliar defensin in *Escherichia coli*. *Journal of Applied Microbiology* 106, 1640-1648.

Marshall, E., Costa, L.M., Gutierrez-Marcos, J., 2011. Cysteine-rich peptides (CRPs) mediate diverse aspects of cell–cell communication in plant reproduction and development. *Journal of Experimental Botany* 62, 1677-1686.

Metz, M., Dahlbeck, D., Morales, C.Q., Sady, B.A., Clark, E.T., Staskawicz, B.J., 2005. The conserved *Xanthomonas campestris* pv. *vesicatoria* effector protein XopX is a virulence factor and suppresses host defense in *Nicotiana benthamiana*. *Plant Journal* 41, 801-814.

Montesinos, E., 2007. Antimicrobial peptides and plant disease control. *FEMS Microbiology Letters* 270, 1-11.

Nahirňak, V., Almasia, N.I., Fernandez, P.V., Hopp, H.E., Estevez, J.M., Carrari, F., Vazquez-Rovere, C., 2012. Potato snakin-1 gene silencing affects cell division, primary metabolism, and cell wall composition. *Plant Physiology* 158, 252-263.

Nakagawa, T., Kurose, T., Hino, T., Tanaka, K., Kawamukai, M., Niwa, Y., Toyooka, K., Matsuoka, K., Jinbo, T., Kimura, T., 2007. Development of series of gateway binary vectors, pGWBs, for realizing efficient construction of fusion genes for plant transformation. *Journal of Bioscience and Bioengineering* 104, 34-41.

Nawrot, R., Barylski, J., Nowicki, G., Broniarczyk, J., Buchwald, W., Goździcka-Józefiak, A., 2014. Plant antimicrobial peptides. *Folia Microbiologica* 59, 181-196.

Ntui, V.O., Thirukkumaran, G., Azadi, P., Khan, R.S., Nakamura, I., Mii, M., 2010. Stable integration and expression of wasabi defensin gene in “Egusi” melon (*Colocynthis citrullus* L.) confers resistance to Fusarium wilt and Alternaria leaf spot. *Plant Cell Reports* 29, 943-954.

Odintsova, T.I., Vassilevski, A.A., Slavokhotova, A.A., Musolyamov, A.K., Finkina, E.I., Khadeeva, N.V., Rogozhin, E.A., Korostyleva, T.V., Pukhalsky, V.A., Grishin, E.V., 2009. A novel antifungal hevein-type peptide from *Triticum kiharae* seeds with a unique 10-cysteine motif. *FEBS Journal* 276, 4266-4275.

Okuda, S., Tsutsui, H., Shiina, K., Sprunck, S., Takeuchi, H., Yui, R., Kasahara, R.D., Hamamura, Y., Mizukami, A., Susaki, D., 2009. Defensin-like polypeptide LUREs are pollen tube attractants secreted from synergid cells. *Nature* 458, 357-361.

Ono, N.N., Tian, L., 2011. The multiplicity of hairy root cultures: prolific possibilities. *Plant Science* 180, 439-446.

Osborn, R.W., De Samblanx, G.W., Thevissen, K., Goderis, I., Torrekens, S., Van Leuven, F., Attenborough, S., Rees, S.B., Broekaert, W.F., 1995. Isolation and characterisation of plant defensins from seeds of *Asteraceae*, *Fabaceae*, *Hippocastanaceae* and *Saxifragaceae*. *FEBS letters* 368, 257-262.

Padovan, L., Scocchi, M., Tossi, A., 2010. Structural aspects of plant antimicrobial peptides. *Current Protein and Peptide Science* 11, 210-219.

Park, H.C., Kang, Y.H., Chun, H.J., Koo, J.C., Cheong, Y.H., Kim, C.Y., Kim, M.C., Chung, W.S., Kim, J.C., Yoo, J.H., 2002. Characterization of a stamen-specific cDNA encoding a novel plant defensin in Chinese cabbage. *Plant Molecular Biology* 50, 57-68.

Pavlov, A., Kovatcheva, P., Georgiev, V., Koleva, I., Ilieva, M., 2002. Biosynthesis and radical scavenging activity of betalains during the cultivation of red beet (*Beta vulgaris*) hairy root cultures. *Zeitschrift für Naturforschung C* 57, 640-644.

Pervieux, I., Bourassa, M., Laurans, F., Hamelin, R., Séguin, A., 2004. A spruce defensin showing strong antifungal activity and increased transcript accumulation after wounding and jasmonate treatments. *Physiological and Molecular Plant Pathology* 64, 331-341.

Peyret, H., Lomonosoff, G.P., 2013. The pEAQ vector series: the easy and quick way to produce recombinant proteins in plants. *Plant Molecular Biology* 83, 51-58.

Portieles, R., Ayra, C., Gonzalez, E., Gallo, A., Rodriguez, R., Chacón, O., López, Y., Rodriguez, M., Castillo, J., Pujol, M., 2010. *NmDef02*, a novel antimicrobial gene isolated from *Nicotiana megalosiphon* confers high-level pathogen resistance under greenhouse and field conditions. *Plant Biotechnology Journal* 8, 678-690.

Punwani, J.A., Rabiger, D.S., Drews, G.N., 2007. MYB98 positively regulates a battery of synergid-expressed genes encoding filiform apparatus-localized proteins. *Plant Cell* 19, 2557-2568.

Rahnamaeian, M., Vilcinskis, A., 2012. Defense gene expression is potentiated in transgenic barley expressing antifungal peptide metchnikowin throughout powdery mildew challenge. *Journal of Plant Research* 125, 115-124.

Ramessar, K., Capell, T., Christou, P., 2008. Molecular pharming in cereal crops. *Phytochemistry Reviews* 7, 579-592.

Sainsbury, F., Thuenemann, E.C., Lomonosoff, G.P., 2009. pEAQ: versatile expression vectors for easy and quick transient expression of heterologous proteins in plants. *Plant Biotechnology Journal* 7, 682-693.

Schmittgen, T.D., Livak, K.J., 2008. Analyzing real-time PCR data by the comparative CT method. *Nature Protocols* 3, 1101-1108.

Segura, A., Moreno, M., Madueño, F., Molina, A., García-Olmedo, F., 1999. Snakin-1, a peptide from potato that is active against plant pathogens. *Molecular Plant-Microbe Interactions* 12, 16-23.

Sevón, N., Oksman-Caldentey, K.-M., 2002. *Agrobacterium rhizogenes*-mediated transformation: root cultures as a source of alkaloids. *Planta Medica* 68, 859-868.

Shaaltiel, Y., Bartfeld, D., Hashmueli, S., Baum, G., Brill-Almon, E., Galili, G., Dym, O., Boldin-Adamsky, S.A., Silman, I., Sussman, J.L., 2007. Production of glucocerebrosidase with terminal mannose glycans for enzyme replacement therapy of Gaucher's disease using a plant cell system. *Plant Biotechnology Journal* 5, 579-590.

Sharma, A., Sharma, R., Imamura, M., Yamakawa, M., Machii, H., 2000. Transgenic expression of cecropin B, an antibacterial peptide from *Bombyx mori*, confers enhanced resistance to bacterial leaf blight in rice. *FEBS letters* 484, 7-11.

Silverstein, K.A., Moskal, W.A., Wu, H.C., Underwood, B.A., Graham, M.A., Town, C.D., VandenBosch, K.A., 2007. Small cysteine-rich peptides resembling antimicrobial peptides have been under-predicted in plants. *Plant Journal* 51, 262-280.

Sjahril, R., Chin, D.P., Khan, R.S., Yamamura, S., Nakamura, I., Amemiya, Y., Mii, M., 2006. Transgenic *Phalaenopsis* plants with resistance to *Erwinia carotovora* produced by introducing wasabi defensin gene using *Agrobacterium* method. *Plant Biotechnology* 23, 191-194.



Sparkes, I.A., Runions, J., Kearns, A., Hawes, C., 2006. Rapid, transient expression of fluorescent fusion proteins in tobacco plants and generation of stably transformed plants. *Nature Protocols* 1, 2019-2025.

Stec, B., 2006. Plant thionins—the structural perspective. *Cellular and Molecular Life Sciences* 63, 1370-1385.

Stotz, H.U., Spence, B., Wang, Y., 2009. A defensin from tomato with dual function in defense and development. *Plant Molecular Biology* 71, 131-143.

Stover, E., Stange, R.R., McCollum, T.G., Jaynes, J., Irey, M., Mirkov, E., 2013. Screening antimicrobial peptides *in vitro* for use in developing transgenic citrus resistant to Huanglongbing and citrus canker. *Journal of the American Society for Horticultural Science* 138, 142-148.

Tantong, S., Pringsulaka, O., Weerawanich, K., Meeprasert, A., Rungrotmongkol, T., Sarnthima, R., Roytrakul, S., Sirikantaramas, S., 2016. Two novel antimicrobial defensins from rice identified by gene coexpression network analyses. *Peptides* 84, 7-16.

Tavares, L.S., Santos, M.d.O., Viccini, L.F., Moreira, J.S., Miller, R.N., Franco, O.L., 2008. Biotechnological potential of antimicrobial peptides from flowers. *Peptides* 29, 1842-1851.

Terras, F.R., Eggermont, K., Kovaleva, V., Raikhel, N.V., Osborn, R.W., Kester, A., Rees, S.B., Torrekens, S., Van Leuven, F., Vanderleyden, J., 1995. Small cysteine-rich antifungal proteins from radish: their role in host defense. *Plant Cell* 7, 573-588.

Turrini, A., Sbrana, C., Pitto, L., Ruffini Castiglione, M., Giorgetti, L., Briganti, R., Bracci, T., Evangelista, M., Nuti, M., Giovannetti, M., 2004. The antifungal Dm-AMP1 protein from *Dahlia merckii* expressed in *Solanum melongena* is released in root exudates and

differentially affects pathogenic fungi and mycorrhizal symbiosis. *New Phytologist* 163, 393-403.

Van den Heuvel, K., Hulzink, J., Barendse, G., Wullems, G., 2001. The expression of *tgas118*, encoding a defensin in *Lycopersicon esculentum*, is regulated by gibberellin. *Journal of Experimental Botany* 52, 1427-1436.

Van der Weerden, N.L., Anderson, M.A., 2013. Plant defensins: common fold, multiple functions. *Fungal Biology Reviews* 26, 121-131.

Verma, S.S., Yajima, W.R., Rahman, M.H., Shah, S., Liu, J.-J., Ekramoddoullah, A.K., Kav, N.N., 2012. A cysteine-rich antimicrobial peptide from *Pinus monticola* (PmAMP1) confers resistance to multiple fungal pathogens in canola (*Brassica napus*). *Plant Molecular Biology* 79, 61-74.

Vijayan, S., Guruprasad, L., Kirti, P., 2008. Prokaryotic expression of a constitutively expressed *Tephrosia villosa* defensin and its potent antifungal activity. *Applied Microbiology and Biotechnology* 80, 1023-1032.

Visser, M., Stephan, D., Jaynes, J., Burger, J., 2012. A transient expression assay for the *in planta* efficacy screening of an antimicrobial peptide against grapevine bacterial pathogens. *Letters in Applied Microbiology* 54, 543-551.

Vitale, A., Denecke, J., 1999. The endoplasmic reticulum—Gateway of the secretory pathway. *Plant Cell* 11, 615-628.

Wang, B., Yu, J., Zhu, D., Zhao, Q., 2011. Maize defensin *ZmDEF1* is involved in plant response to fungal phytopathogens. *African Journal of Biotechnology* 10, 16128-16137.

Wang, Y., Nowak, G., Culley, D., Hadwiger, L.A., Fristensky, B., 1999. Constitutive expression of pea defense gene DRR206 confers resistance to blackleg (*Leptosphaeria*

*maculans*) disease in transgenic canola (*Brassica napus*). *Molecular Plant-Microbe Interactions* 12, 410-418.

Wei, W., Chao, W., Mei, L., LIU, X.-r., HU, G.-c., SI, H.-m., SUN, Z.-x., LIU, W.-z., FU, Y.-p., 2011. Resistance of antimicrobial peptide gene transgenic rice to bacterial blight. *Rice Science* 18, 10-16.

Wu, J., Wu, L.-t., Liu, Z.-b., Qian, L., Wang, M.-h., Zhou, L.-r., Yang, Y., Li, X.-f., 2009. A plant defensin gene from *Orychophragmus violaceus* can improve *Brassica napus*' resistance to *Sclerotinia sclerotiorum*. *African Journal of Biotechnology* 8, 6101-6109.

Wu, Y., He, Y., Ge, X., 2011. Functional characterization of the recombinant antimicrobial peptide Trx-Ace-AMP1 and its application on the control of tomato early blight disease. *Applied Microbiology and Biotechnology* 90, 1303-1310.

Wuest, S.E., Vijverberg, K., Schmidt, A., Weiss, M., Gheyselinck, J., Lohr, M., Wellmer, F., Rahnenführer, J., von Mering, C., Grossniklaus, U., 2010. *Arabidopsis* female gametophyte gene expression map reveals similarities between plant and animal gametes. *Current Biology* 20, 506-512.

Xu, J., Ge, X., Dolan, M.C., 2011. Towards high-yield production of pharmaceutical proteins with plant cell suspension cultures. *Biotechnology Advances* 29, 278-299.

Yang, Y., Li, R., Qi, M., 2000. *In vivo* analysis of plant promoters and transcription factors by agroinfiltration of tobacco leaves. *Plant Journal* 22, 543-551.

Yoshida, S., 1976. Routine procedure for growing rice plants in culture solution. *Laboratory Manual for Physiological Studies of Rice*, 61-66.

Zhang, L., Geng, X., Zhang, H., Zhou, C., Zhao, A., Wang, F., Zhao, Y., Tian, X., Hu, Z., Xin, M., 2017. Isolation and characterization of heat-responsive gene *TaGASR1* from wheat (*Triticum aestivum* L.). *Journal of Plant Biology* 60, 57-65.

Zhu, Y.J., Agbayani, R., Moore, P.H., 2007. Ectopic expression of *Dahlia merckii* defensin DmAMP1 improves papaya resistance to *Phytophthora palmivora* by reducing pathogen vigor. *Planta* 226, 87-97.





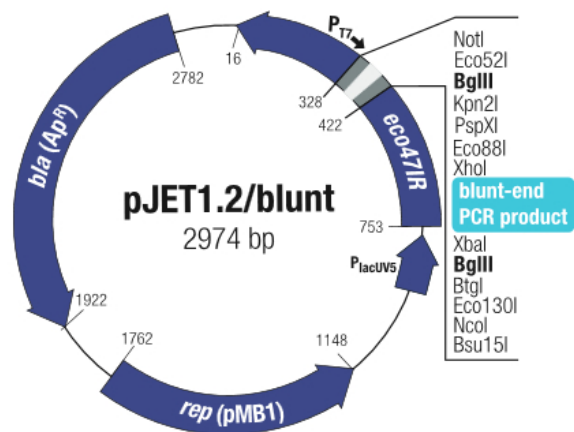
APPENDIX

จุฬาลงกรณ์มหาวิทยาลัย  
CHULALONGKORN UNIVERSITY

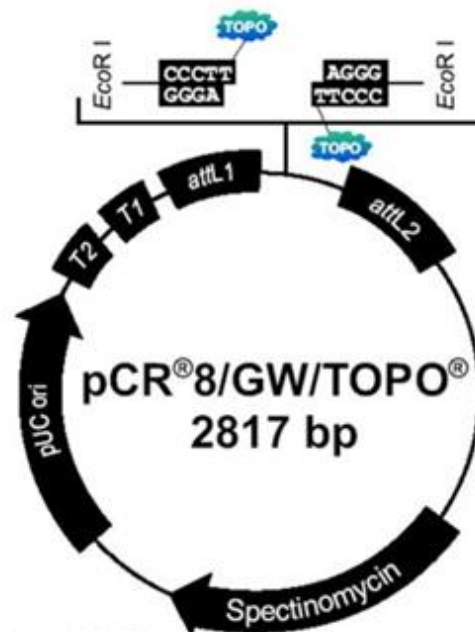
## Appendix A

## Vector maps

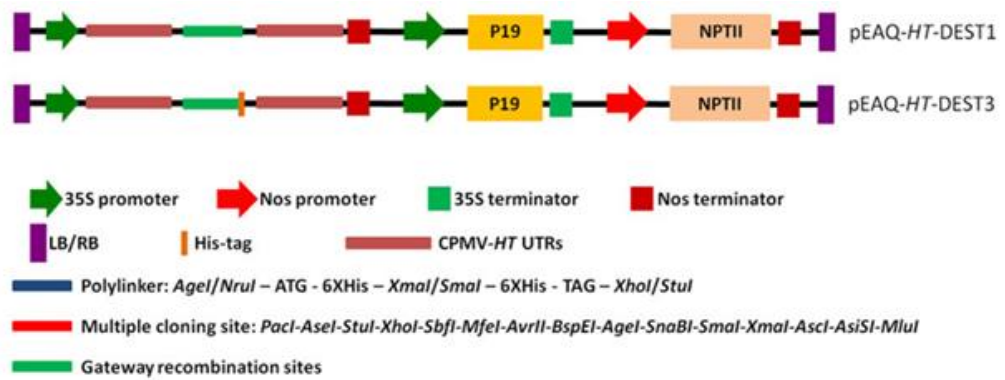
CloneJET PCR Cloning Kit (taken from [www.lifetechnologies.com](http://www.lifetechnologies.com))



pCR™8/GW/TOPO® TA Cloning Kit (taken from [www.thermofisher.com](http://www.thermofisher.com))

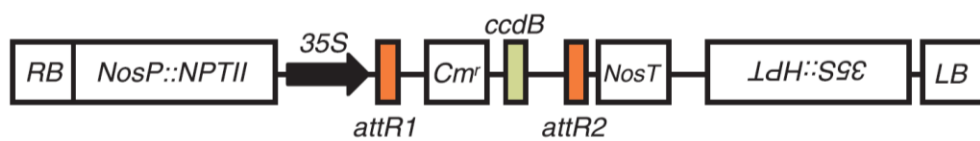


pEAQ-HT-DEST1 (pEAQ1) and pEAQ-HT-DEST3 (pEAQ3) (taken from Peyret and Lomonosoff, 2013)



pGBW2 and pGWB5 (taken from Nakagawa *et al.*, 2007)

pGBW2



pGWB5



## Appendix B

## The nucleotide sequence alignment

Original seq	1	ATGGCTCCGTCTCGTCGCATGGTCGCGTCCGCCTTCCTCCTCCTGGCC	48
		.   .   .   .   .   .   .   .   .   .   .   .	
Optimized seq	1	ATGGCACCTTCACGAAGGATGGTTGCTAGTGCTTTCTTGCTCCTCGCC	48
		M A P S R R M V A S A F L L L A	
Original seq	49	ATCCTCGTCGCCACAGAGATGGGGACGACCAAGGTGGCGGAGGCGAGG	96
		.   .   .   .     .     .     .   .     .   .	
Optimized seq	49	ATACTGGTAGCAACCGAGATGGGTACGACTAAGGTGCGCAGAGGCCCGT	96
		I L V A T E M G T T K V A E A R	
Original seq	97	CACTGCCTGTGCGCAGAGCCACAGGTTCAAGGGCATGTGCGTGAGCAGC	144
		.   .   .   .   .   .   .   .   .   .   .   .	
Optimized seq	97	CACTGTCTGAGCCAGTCCCATAGATTCAAGGGTATGTGTGTTAGTTCC	144
		H C L S Q S H R F K G M C V S S	
Original seq	145	AACAACGTCGCCAACGTTGTCAGGACGGAGAGCTTCCCCGACGGCGAG	192
		.   .     .     .     .   .     .     .   .     .	
Optimized seq	145	AATAATTGCGCTAACGTTGTCAGAACTGAGAGTTTCCAGATGGCGAA	192
		N N C A N V C R T E S F P D G E	
Original seq	193	TGCAAGTCGCACGGCCTCGAGCGCAAGTGCTTCTGCAAGAAGGTCTGC	240
		.   .   .   .   .   .   .   .   .   .   .   .	
Optimized seq	193	TGCAAATCTCATGGGCTGGAAAGAAAGTGCTTCTGTAAAAAGGTATGC	240
		C K S H G L E R K C F C K K V C	
Original seq	241	TAG-----	243
		*	
Optimized seq	241	CACCATCATCACCACCATTTCAGAAAAGGACGAATTGTAG	279
		H H H H H H S E K D E L *	

UHULALONGKORN UNIVERSITY

The nucleotide sequence alignment of the original sequence and codon-optimized *OsDEF7* for *N. benthamiana* including 6xHis-tag and SEKDEL ER retention at the C-terminal.



Original seq	1	ATGGAGGCTTCACGCAAGGTGTTCTCGGCCATGCTTCTCATGGTGCTG	48
		.  ...  .     ...     .   .     ... .	
Optimized seq	1	ATGGAAGCCAGTCGTAAAGTGTTCAGCGCCATGTTACTGATGGTTTTA	48
		M E A S R K V F S A M L L M V L	
Original seq	49	CTGCTTGCAGCCACTGGTGAGATGGGCGGGCCGGTGATGGTGGCGGAG	96
		.    .     .  .     ...  .  .     ...  .  .	
Optimized seq	49	CTCCTCGCCGCCACAGGAGAGATGGGAGGTCCCGTGATGGTAGCTGAA	96
		L L A A T G E M G G P V M V A E	
Original seq	97	GCTCGGACGTGCGAGTCGCAGAGCCACCGGTTCAAGGGCCCGTGCGCC	144
		..  .     ...  ...   .  .     ...  .	
Optimized seq	97	GCCAGAACATGCGAGTCTCAATCACACAGATTCAAGGGCCCTTGTGCC	144
		A R T C E S Q S H R F K G P C A	
Original seq	145	CGCAAGGCGAACTGCGCCAGCGTATGCAACACGGAGGGCTTCCCGGAC	192
		.     .     .  ...   .  .  .  .  .     .  .	
Optimized seq	145	CGTAAGGCAAACGTGCATCCGTTTGTAAATACTGAAGGATTCCTGAT	192
		R K A N C A S V C N T E G F P D	
Original seq	193	GGCTACTGCCACGGCGTCCGCCCGCTGCATGTGCACCAAGCCCTGC	240
		.     ...  .  .  .  .     .     .     .	
Optimized seq	193	GGCTATTGCCACGGTGTGCGTCGTCGTTGTATGTGTACCAAACCCTGT	240
		G Y C H G V R R R C M C T K P C	
Original seq	241	CCCTGA-----	246
		. *	
Optimized seq	241	CCTCACCATCATCACCACCATTTCAGAAAAGGACGAATTGTAG	282
		P H H H H H H S E K D E L *	

  
 CHULALONGKORN UNIVERSITY

The nucleotide sequence alignment of the original sequence and codon-optimized *OsDEF8* for *N. benthamiana* including 6xHis-tag and SEKDEL ER retention at the C-terminal.

## Appendix C

### Preparation of polyacrylamide gel electrophoresis

#### 1. Stock reagents

##### 1 M Tris-HCl pH 6.8

Tris (hydroxymethyl)-aminomethane 12.1 g

Adjust pH to 6.8 with conc. HCl and adjust volume to 100 ml with distilled water

##### 1.5 M Tris-HCl pH 8.8

Tris (hydroxymethyl)-aminomethane 18.15 g

Adjust pH to 8.8 with conc. HCl and adjust volume to 100 ml with distilled water

##### 10% (w/v) SDS solution

SDS 10 g

Add distilled water to the final volume of 100 ml

##### 10% Ammonium persulfate ((NH<sub>4</sub>)<sub>2</sub>S<sub>2</sub>O<sub>8</sub>)

Ammonium persulfate 1 g

Add distilled water to the final volume of 10 ml

#### 2. SDS-PAGE

##### 12% Separating gel, 8ml

30% Acrylamide solution 3.2 ml

1.5 M Tris-HCl pH 8.8 2 ml

Distilled water 2.6 ml

10% SDS solution 80 µl

10% (NH<sub>4</sub>)<sub>2</sub>S<sub>2</sub>O<sub>8</sub> 80 µl

TEMED	5 $\mu$ l
-------	-----------

**5% Stacking gel, 5 ml**

30% Acrylamide solution	1 $\mu$ l
-------------------------	-----------

1 M Tris-HCl pH 6.8	1.25 $\mu$ l
---------------------	--------------

Distilled water	2.6 ml
-----------------	--------

10% SDS solution	50 $\mu$ l
------------------	------------

10% $(\text{NH}_4)_2\text{S}_2\text{O}_8$	50 $\mu$ l
---	------------

TEMED	4 $\mu$ l
-------	-----------

**5X Sample buffer, 10 ml**

1 M Tris-HCl pH 6.8	0.6 ml
---------------------	--------

50% Glycerol	5 ml
--------------	------

2-Mercaptoethanol	0.5 ml
-------------------	--------

10% SDS solution	2 ml
------------------	------

1% Bromophenol blue	1 ml
---------------------	------

Distilled water	0.9 ml
-----------------	--------

One part of sample was mixed with four parts of protein sample.

**10X Electrophoresis buffer, 1 litre**

Tris (hydroxymethyl)-aminomethane	121.14 g
-----------------------------------	----------

Tricine	179.20 g
---------	----------

SDS	10 g
-----	------

Adjust volume with distilled water to 1 litre (No pH adjustment is required, final pH should be 8.3), One part of electrophoresis buffer was dissolved in nine parts of distilled water.

**APPENDIX D****Preparation of Western blot reagents****Stock reagents****10X Tris buffer saline (TBS) pH 7.6, 1 litre**

Tris (hydroxymethyl)-aminomethane	60.5 g
NaCl	87.6 g

Adjust to pH 7.6 and adjust to final volume of 1 litre

One part of TBS buffer was mixed with nine parts of distilled water.

**10X Tris glycine buffer (TG) pH 8.3, 1 litre**

Tris (hydroxymethyl)-aminomethane	30 g
Glycine	144 g

(Final pH should be 8.3)

One part of electrophoresis buffer was mixed with nine parts of distilled water.

## APPENDIX E

## Preparation of agarose gel electrophoresis buffer

## 10X Tris boric EDTA (TBE) buffer, pH 8.3

Tris (hydroxymethyl)-aminomethane	108 g
Boric acid	55 g
EDTA	9.3 g

Adjust pH to 8.3 and adjust volume to 1 litre



## APPENDIX F

## Preparation of Yoshida's stock solution

Element	Reagent (AR grade)	Preparation (g/100 ml)	
N	$\text{NH}_4\text{NO}_3$	9.14	
P	$\text{NaH}_2\text{PO}_4 \cdot 2\text{H}_2\text{O}$	4.03	
K	$\text{K}_2\text{SO}_4$	7.14	
Ca	$\text{CaCl}_2$	8.86	
Mg	$\text{MgSO}_4 \cdot 7\text{H}_2\text{O}$	32.4	
Mn	$\text{MnCl}_2 \cdot 4\text{H}_2\text{O}$	150 mg	Dissolve separately; then combine with 5 ml of concentrated $\text{H}_2\text{SO}_4$ . Make up to 100 ml with distilled water.
Mo	$(\text{NH}_4)_6\text{Mo}_7\text{O}_{24} \cdot 4\text{H}_2\text{O}$	7.4 mg	
B	$\text{H}_3\text{BO}_3$	93.4 mg	
Zn	$\text{ZnSO}_4 \cdot 7\text{H}_2\text{O}$	3.5 mg	
Cu	$\text{CuSO}_4 \cdot 5\text{H}_2\text{O}$	3.1 mg	
Fe	$\text{FeCl}_3 \cdot 6\text{H}_2\text{O}$	770 mg	
	Citric acid (monohydrate)	1190 mg	

## VITA

Miss Kamonwan Weerawanich was born on January 13th, 1992. She graduated with the Second-Class Honors Bachelor's degree from the Department of Biochemistry, Faculty of Science, Chulalongkorn University. Then, she continued studying Master degree in Biochemistry and Molecular Biology program, Faculty of Science at Chulalongkorn University.

She participated in many scientific conferences during those years. She got outstanding poster presentation award in the 5th International Biochemistry and Molecular Biology Conference 2016 at Songkhla, Thailand and her proceeding was published in the title of "Cloning, gene expression, and subcellular localization analysis of rice DEF 7 and 8 from *Oryza sativa* L. cv. KDML 105". She also joined the 28th Annual Meeting of the Thai Society for Biotechnology and International Conference at Chiang Mai, Thailand and the Biological Sciences Graduate Congress (BSGC) at the University of Malaya, Kuala Lumpur, Malaysia. Moreover, she participated in in silico analysis and in planta antimicrobial activity of other rice antimicrobial peptides. She is one of the authors in the article that has been published in *Peptides* (2016), 84, 7-16, entitled "Two novel antimicrobial defensins from rice identified by gene coexpression network analyses" The other two publications, "Heterologous expression and antimicrobial activity of OsGASR3 from rice (*Oryza sativa* L.)" and "In silico analyses of rice thionin genes and the antimicrobial activity of OsTHION15 against phytopathogens" that she co-authored are now under review.