



รายการอ้างอิง

ทวีศักดิ์ สุวคนธ์ . บริหารงานขาย (Sales Management) : ซีเอ็ดดูเคชั่น , 2540.

ศิริวรรณ เสรีรัตน์ . การบริหารการตลาดยุคใหม่ : เอกสารสำนักพิมพ์DIAMOND in BUSINESS WORLD,2541.

พสุ เศษะรินทร์ . เส้นทางจากกลยุทธ์สู่การปฏิบัติด้วย Balanced Scorecard และ Key Performance Indicators : โรงพิมพ์แห่งจุฬาลงกรณ์มหาวิทยาลัย ,2544.

ทรงเกียรติ วิสุทธิพิทักษ์กุล . การใช้สถิติเพื่อการปรับปรุงกระบวนการ : ซีเอ็ดดูเคชั่น , 2545.

ฉันทวิก กุลไพศาล . ระบบสนับสนุนการตัดสินใจ : ซีเอ็ดดูเคชั่น , 2540.

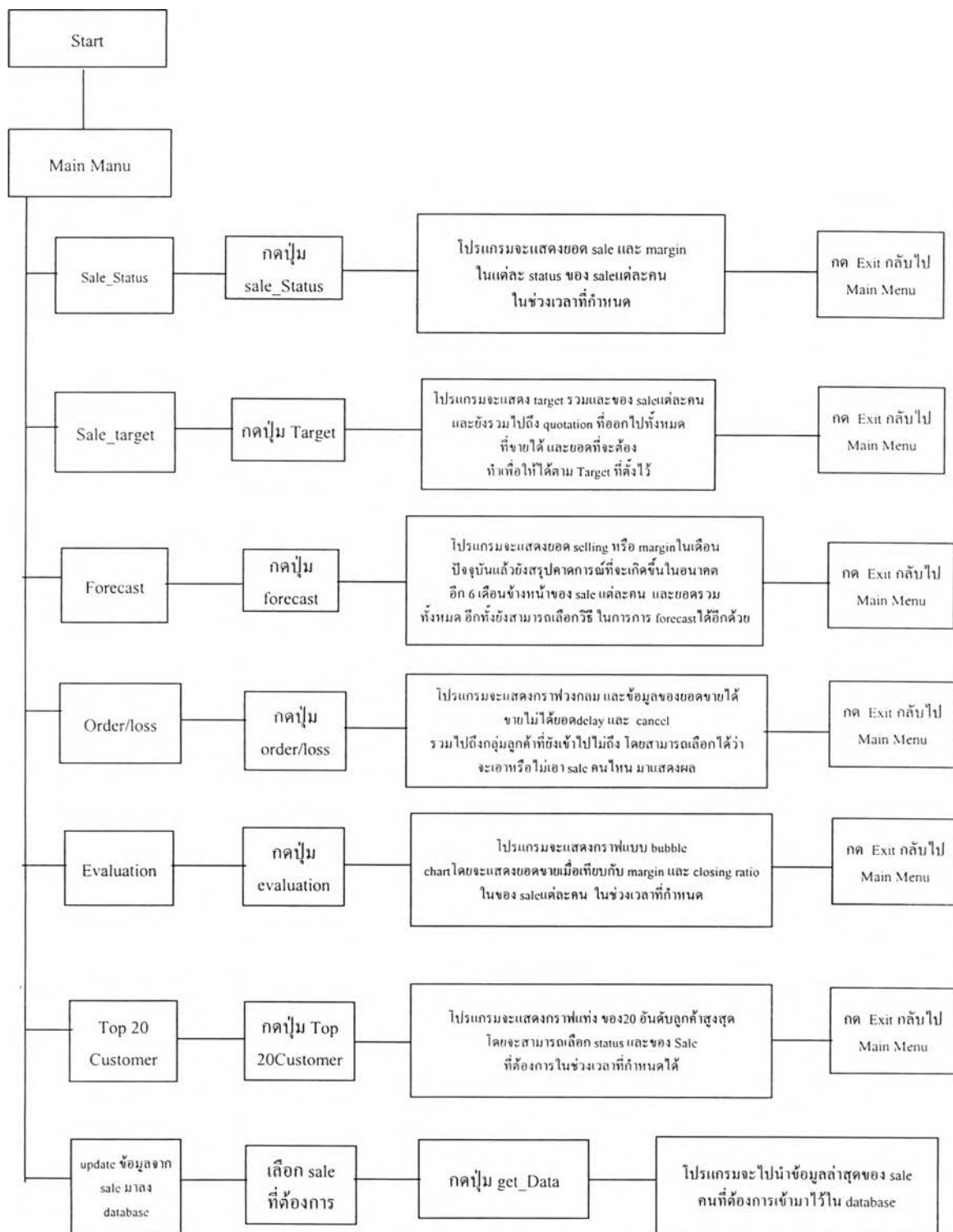
ฉัตรทิพย์ กาญจนโกคิน . ระบบสนับสนุนการตัดสินใจในการวางแผนและควบคุมการผลิต และลดขั้นตอนการทำงานในการวางแผนการผลิต : วิทยานิพนธ์ปริญญาโทบริหารธุรกิจ ภาควิชาวิศวกรรมอุตสาหกรรม คณะวิศวกรรมศาสตร์ จุฬาลงกรณ์มหาวิทยาลัย , 2540.

นายไพสันต์ พัฒนะอุหา . ระบบสนับสนุนการตัดสินใจสำหรับการซ่อมใหญ่สวิตช์ตัดตอนอัตโนมัติในสถานีย่อย : วิทยานิพนธ์ปริญญาโทบริหารธุรกิจ ภาควิชาวิศวกรรมอุตสาหกรรม คณะวิศวกรรมศาสตร์ จุฬาลงกรณ์มหาวิทยาลัย, 2538.

ภาคผนวก

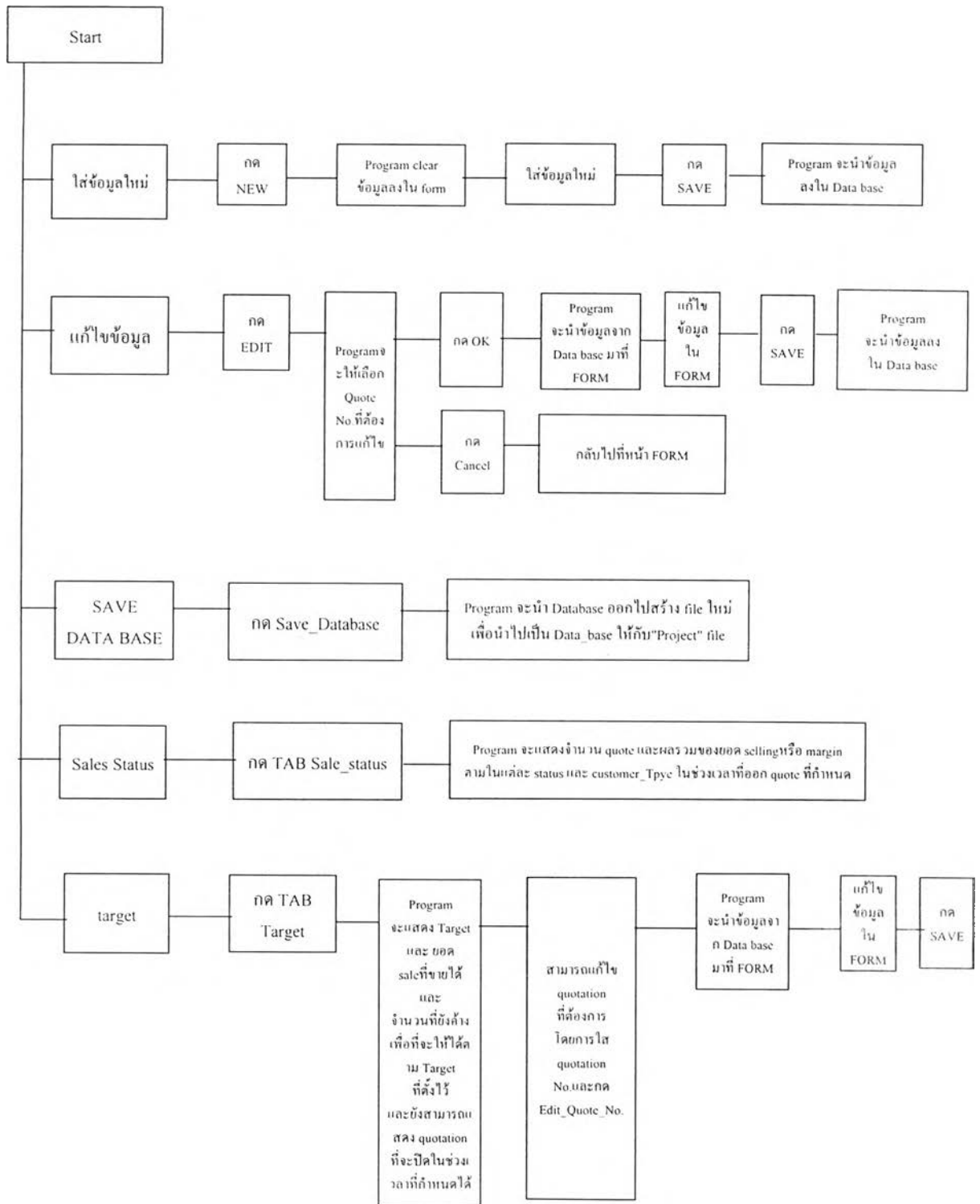
ภาคผนวก ก

คู่มือการใช้งาน โปรแกรม Project.xls



ภาคผนวก ก

คู่มือการใช้งานโปรแกรม Project-sub.xls



ภาคผนวก ข1

Sub Recal1()

```

'
' Macro1 Macro
' Macro recorded 23/12/02 by Microsoft
'

Range("D13").Select
If ActiveCell = 0 Then
ActiveCell.FormulaR1C1 = "=R[1]C*R[-1]C"
Selection.Copy
Selection.PasteSpecial Paste:=xlValues, Operation:=xlNone, SkipBlanks:=
    False, Transpose:=False
Application.CutCopyMode = False
End If
Range("D14").Select
If ActiveCell = 0 Then
ActiveCell.FormulaR1C1 = "=R[-1]C/R[-2]C"
Selection.Copy
Selection.PasteSpecial Paste:=xlValues, Operation:=xlNone, SkipBlanks:=
    False, Transpose:=False
Application.CutCopyMode = False
End If
End Sub

```

Sub Recal2()

```

'
' Macro2 Macro
' Macro recorded 23/12/02 by Microsoft
'

Range("D17").Select
If ActiveCell = 0 Then
ActiveCell.FormulaR1C1 = "=R[1]C*R[-1]C"
Selection.Copy
Selection.PasteSpecial Paste:=xlValues, Operation:=xlNone, SkipBlanks:=
    False, Transpose:=False
Application.CutCopyMode = False
End If
Range("D18").Select
If ActiveCell = 0 Then
ActiveCell.FormulaR1C1 = "=R[-1]C/R[-2]C"
Selection.Copy

```

ภาคผนวก ข1

```

Selection.PasteSpecial Paste:=xlValues, Operation:=xlNone, SkipBlanks:= _
    False, Transpose:=False
Application.CutCopyMode = False
End If
'
End Sub

```

Public Sub Recal3()

```

Range("D21").Select
If ActiveCell = 0 Then
ActiveCell.FormulaR1C1 = "=R[1]C*R[-1]C"
Selection.Copy
Selection.PasteSpecial Paste:=xlValues, Operation:=xlNone, SkipBlanks:= _
    False, Transpose:=False
Application.CutCopyMode = False
End If
Range("D22").Select
If ActiveCell = 0 Then
ActiveCell.FormulaR1C1 = "=R[-1]C/R[-2]C"
Selection.Copy
Selection.PasteSpecial Paste:=xlValues, Operation:=xlNone, SkipBlanks:= _
    False, Transpose:=False
Application.CutCopyMode = False
End If
End

```

Public Sub Recal4()

```

Range("D25").Select
If ActiveCell = 0 Then
ActiveCell.FormulaR1C1 = "=R[1]C*R[-1]C"
Selection.Copy
Selection.PasteSpecial Paste:=xlValues, Operation:=xlNone, SkipBlanks:= _
    False, Transpose:=False
Application.CutCopyMode = False
End If
Range("D26").Select
If ActiveCell = 0 Then
ActiveCell.FormulaR1C1 = "=R[-1]C/R[-2]C"
Selection.Copy
Selection.PasteSpecial Paste:=xlValues, Operation:=xlNone, SkipBlanks:= _
    False, Transpose:=False
Application.CutCopyMode = False

```

ภาคผนวก ข1

```
End If
End Sub
```

Public Sub Recal5()

```
Range("D29").Select
If ActiveCell = 0 Then
ActiveCell.FormulaR1C1 = "=R[1]C*R[-1]C"
Selection.Copy
Selection.PasteSpecial Paste:=xlValues, Operation:=xlNone, SkipBlanks:=
False, Transpose:=False
Application.CutCopyMode = False
End If
Range("D30").Select
If ActiveCell = 0 Then
ActiveCell.FormulaR1C1 = "=R[-1]C/R[-2]C"
Selection.Copy
Selection.PasteSpecial Paste:=xlValues, Operation:=xlNone, SkipBlanks:=
False, Transpose:=False
Application.CutCopyMode = False
End If
End Sub
```

Sub Cal_Customer()

```
Application.Goto Reference:="ST"
ActiveSheet.PivotTables("PivotTable1").PivotSelect "", xlDataAndLabel
ActiveSheet.PivotTables("PivotTable1").RefreshTable
ActiveSheet.PivotTables("PivotTable1").PivotSelect "", xlDataOnly
Selection.Sort Key1:="RC". Order1:=xlDescending, Type:=xlSortValues,
OrderCustom:=1, Orientation:=xlTopToBottom
ActiveSheet.PivotTables("PivotTable1").PivotSelect "", xlDataAndLabel
Selection.Copy
Application.Goto Reference:="ST"
Selection.PasteSpecial Paste:=xlValues, Operation:=xlNone, SkipBlanks:=
False, Transpose:=False
ActiveWindow.SmallScroll ToRight:=2
ActiveCell.Offset(2, 0).Range("A1").Select
Application.CutCopyMode = False
```

```
Application.Goto Reference:="ST"
```

ภาคผนวก ข1

```

ActiveCell.Offset(2, 0).Range("A1").Select
ActiveWorkbook.Names.Add Name:="START", RefersToR1C1:=ActiveCell
Do While ActiveCell <> "Grand Total"
ActiveWorkbook.Names.Add Name:="AAA", RefersToR1C1:=ActiveCell

ActiveCell.Offset(0, 1).Range("A1").Select
ActiveCell.FormulaR1C1 = "=AA"

Selection.Copy
Selection.PasteSpecial Paste:=xlValues, Operation:=xlNone, SkipBlanks:= _
False, Transpose:=False

ActiveCell.Offset(1, -1).Range("A1").Select
Loop
Application.CutCopyMode = False
ActiveCell.Offset(-1, 1).Range("A1").Select
ActiveWorkbook.Names.Add Name:="END", RefersToR1C1:=ActiveCell

Range("START:END").Select

Selection.Sort Key1:=ActiveCell.Offset(0, 1).Range("A1"), Order1:= _
xlDescending, Header:=xlNo, OrderCustom:=1, MatchCase:=False, _
Orientation:=xlTopToBottom

Application.Goto Reference:="START"
ActiveCell.Offset(19, 1).Range("A1").Select
ActiveWorkbook.Names.Add Name:="END2", RefersToR1C1:=ActiveCell
Range("START:END2").Select
Selection.Copy
Range("C25").Select
Selection.PasteSpecial Paste:=xlValues, Operation:=xlNone, SkipBlanks:= _
False, Transpose:=True
ActiveWindow.LargeScroll ToRight:=1
Application.CutCopyMode = False
ActiveWorkbook.CustomViews("Chart1").Show
Range("R3").Select
ActiveWorkbook.CustomViews("Top20").Show

End Sub

```


ภาคผนวก ข1

Sub Update_data()

Dim Dummy As Object

Dim Dummy2 As Object

Sheets("consolidate").Select

Set Dummy2 = ActiveWorkbook.Sheets("Main").Range("C20")

Application.Goto Reference:="Database"

Selection.Sort Key1:=Range("B2"), Order1:=xlAscending, Header:=xlGuess, _

OrderCustom:=1, MatchCase:=False, Orientation:=xlTopToBottom

Range("B2").Select

Workbooks.Open FileName:=Dummy2

ActiveWorkbook.SaveAs FileName:="C:\My Documents\Temp.xls", _

FileFormat:=xlNormal, Password:="", WriteResPassword:="", _

ReadOnlyRecommended:=False, CreateBackup:=False

Application.Goto Reference:="Database"

Selection.Sort Key1:=Range("B2"), Order1:=xlAscending, Key2:=Range("C2") _

, Order2:=xlAscending, Header:=xlGuess, OrderCustom:=1, MatchCase:= _

False, Orientation:=xlTopToBottom

Range("B2").Select

Do While ActiveCell <> ""

ActiveWorkbook.Names.Add Name:="DEF", RefersToR1C1:=ActiveCell

Set Dummy = ActiveWorkbook.Sheets("consolidate").Range("AF2")

ActiveCell.Offset(0, 0).Range("A1:AB1").Select

Selection.Copy

Windows("Project.xls").Activate

Do While ActiveCell <> "" And ActiveCell <> Dummy

ภาคผนวก ข1

```

ActiveCell.Offset(1, 0).Range("A1").Select

Loop
' Selection.PasteSpecial Paste:=xlFormulas, Operation:=xlNone, SkipBlanks:= _
  False, Transpose:=False
  ActiveSheet.Paste
  Application.CutCopyMode = False
  'Windows("Sales_DATA.xls").Activate
  Windows("Temp.xls").Activate
  ActiveCell.Offset(1, 0).Range("A1").Select
Loop
Windows("Temp.xls").Activate
ActiveWorkbook.Close

Windows("Project.xls").Activate
Sheets("consolidate").Select
Range("B1").Select
ActiveWorkbook.Names.Add Name:="DATAA", RefersToR1C1:=ActiveCell
Selection.End(xlToRight).Select
Selection.End(xlDown).Select
ActiveWorkbook.Names.Add Name:="DATAB", RefersToR1C1:=ActiveCell
Range("DATAA:DATAB").Select
  ActiveWorkbook.Names.Add Name:="Database", RefersToR1C1:=Range("DATAA:DATAB")

Sheets("Main").Select

End Sub

Sub Main()
ActiveWorkbook.CustomViews("Main").Show
End Sub

Sub Target()
  ActiveWorkbook.CustomViews("Target").Show
End Sub

Sub Forecast()

  ActiveWorkbook.CustomViews("Forecast").Show
End Sub

Sub Order_Loss()

```

ภาคผนวก ข1

```

    ActiveWorkbook.CustomViews("Order_Loss").Show
End Sub
Sub Turnout_margin()

    ActiveWorkbook.CustomViews("Turnout_Margin").Show
End Sub
Sub Top20()

    ActiveWorkbook.CustomViews("Chart1").Show
End Sub
Sub status()

    ActiveWorkbook.CustomViews("Status").Show

End Sub
Sub Decsion()

    ActiveWorkbook.CustomViews("Decision").Show

End Sub

Sub Recal0()

'

Range("D9").Select
If ActiveCell = 0 Then
ActiveCell.FormulaR1C1 = "=R[1]C*R[-1]C"
Selection.Copy
Selection.PasteSpecial Paste:=xlValues, Operation:=xlNone, SkipBlanks:=_
    False, Transpose:=False
Application.CutCopyMode = False
End If
Range("D10").Select
If ActiveCell = 0 Then
ActiveCell.FormulaR1C1 = "=R[-1]C/R[-2]C"
Selection.Copy
Selection.PasteSpecial Paste:=xlValues, Operation:=xlNone, SkipBlanks:=_
    False, Transpose:=False

```

ภาคผนวก ข1

```
Application.CutCopyMode = False
End If
```

```
End Sub
```

Sub Recal6()

```
Range("D33").Select
If ActiveCell = 0 Then
ActiveCell.FormulaR1C1 = "=R[1]C*R[-1]C"
Selection.Copy
Selection.PasteSpecial Paste:=xlValues, Operation:=xlNone, SkipBlanks:=
False, Transpose:=False
Application.CutCopyMode = False
End If
Range("D34").Select
If ActiveCell = 0 Then
ActiveCell.FormulaR1C1 = "=R[-1]C/R[-2]C"
Selection.Copy
Selection.PasteSpecial Paste:=xlValues, Operation:=xlNone, SkipBlanks:=
False, Transpose:=False
Application.CutCopyMode = False
End If
```

```
End Sub
```

Sub Recal7()

```
Range("D37").Select
If ActiveCell = 0 Then
ActiveCell.FormulaR1C1 = "=R[1]C*R[-1]C"
Selection.Copy
Selection.PasteSpecial Paste:=xlValues, Operation:=xlNone, SkipBlanks:=
False, Transpose:=False
Application.CutCopyMode = False
End If
Range("D38").Select
If ActiveCell = 0 Then
ActiveCell.FormulaR1C1 = "=R[-1]C/R[-2]C"
Selection.Copy
Selection.PasteSpecial Paste:=xlValues, Operation:=xlNone, SkipBlanks:=
False, Transpose:=False
Application.CutCopyMode = False
End If
```

ภาคผนวก ข1

End Sub

Sub Recal8()

Range("D41").Select

If ActiveCell = 0 Then

ActiveCell.FormulaR1C1 = "=R[1]C*R[-1]C"

Selection.Copy

Selection.PasteSpecial Paste:=xlValues, Operation:=xlNone, SkipBlanks:= _

False, Transpose:=False

Application.CutCopyMode = False

End If

Range("D42").Select

If ActiveCell = 0 Then

ActiveCell.FormulaR1C1 = "=R[-1]C/R[-2]C"

Selection.Copy

Selection.PasteSpecial Paste:=xlValues, Operation:=xlNone, SkipBlanks:= _

False, Transpose:=False

Application.CutCopyMode = False

End If

End Sub

Sub Recal9()

Range("D45").Select

If ActiveCell = 0 Then

ActiveCell.FormulaR1C1 = "=R[1]C*R[-1]C"

Selection.Copy

Selection.PasteSpecial Paste:=xlValues, Operation:=xlNone, SkipBlanks:= _

False, Transpose:=False

Application.CutCopyMode = False

End If

Range("D46").Select

If ActiveCell = 0 Then

ActiveCell.FormulaR1C1 = "=R[-1]C/R[-2]C"

Selection.Copy

Selection.PasteSpecial Paste:=xlValues, Operation:=xlNone, SkipBlanks:= _

False, Transpose:=False

Application.CutCopyMode = False

End If

End Sub

Sub Recal10()

Range("D49").Select

ภาคผนวก ข1

```

If ActiveCell = 0 Then
ActiveCell.FormulaR1C1 = "=R[1]C*R[-1]C"
Selection.Copy
Selection.PasteSpecial Paste:=xlValues, Operation:=xlNone, SkipBlanks:= _
    False, Transpose:=False
Application.CutCopyMode = False
End If
Range("D50").Select
If ActiveCell = 0 Then
ActiveCell.FormulaR1C1 = "=R[-1]C/R[-2]C"
Selection.Copy
Selection.PasteSpecial Paste:=xlValues, Operation:=xlNone, SkipBlanks:= _
    False, Transpose:=False
Application.CutCopyMode = False
End If
End Sub

```

Sub Chang_Percent()

```

' Chang_Percent Macro
' Macro recorded 18/4/2003 by user
'
Range("E6").Select
ActiveCell.FormulaR1C1 = "=RC[10]/100"
Range("E6").Select
Selection.Copy
Selection.PasteSpecial Paste:=xlValues, Operation:=xlNone, SkipBlanks:= _
    False, Transpose:=False
Application.CutCopyMode = False

End Sub

```

Sub Update_All_Data()

```

Range("B33").Select
ActiveCell.FormulaR1C1 = "1"
Update_data

Range("B33").Select
ActiveCell.FormulaR1C1 = "2"

```

ภาคผนวก ข1

```
Update_data
```

```
Range("B33").Select
```

```
ActiveCell.FormulaR1C1 = "3"
```

```
Update_data
```

```
Range("B33").Select
```

```
ActiveCell.FormulaR1C1 = "4"
```

```
Update_data
```

```
Range("B33").Select
```

```
ActiveCell.FormulaR1C1 = "5"
```

```
Update_data
```

```
Range("B33").Select
```

```
ActiveCell.FormulaR1C1 = "6"
```

```
Update_data
```

```
End Sub
```

ภาคผนวก ข2

Sub Brand()

```
' Macro1 Macro  
' Macro recorded 9/1/2003 by user  
  
Range("H9").Select  
ActiveCell.FormulaR1C1 = "=VLOOKUP(R[32]C,Brand_code,2)"  
  
End Sub
```

Sub Product()

```
Range("j9").Select  
ActiveCell.FormulaR1C1 = "=VLOOKUP(R[32]C[1],Product_code,2)"  
Range("J9:K9").Select  
End Sub
```

Sub Chance()

```
' Chance Macro  
' Macro recorded 9/1/2003 by user  
  
Range("H25").Select  
ActiveCell.FormulaR1C1 = "=RC[13]"  
  
End Sub
```

Sub Forecast()

```
' Forecast Macro  
' Macro recorded 9/1/2003 by user
```


ภาคผนวก ข2

```

Range("H27").Select
ActiveCell.FormulaR1C1 = "=RC[16]"

```

```
End Sub
```

Sub Closeout()

```

' Closeout Macro
' Macro recorded 9/1/2003 by user

```

```

Range("H29").Select
ActiveCell.FormulaR1C1 = "=DATE(RC[14],RC[13],RC[12])"

```

```
End Sub
```

Sub Cal_Sale()

```

Range("N19").Select
ActiveCell.FormulaR1C1 = "=R[2]C[-6]*(1+R[2]C[-4])"
Range("N19").Select
Selection.Copy
Selection.PasteSpecial Paste:=xlValues, Operation:=xlNone, SkipBlanks:=
False, Transpose:=False
Application.CutCopyMode = False
Range("H19").Select
ActiveCell.FormulaR1C1 = "=RC[6]/RC[2]"
Range("H19").Select
Selection.Copy
Selection.PasteSpecial Paste:=xlValues, Operation:=xlNone, SkipBlanks:=
False, Transpose:=False
Application.CutCopyMode = False

```

ภาคผนวก ข2

```

Range("N21").Select
ActiveCell.FormulaR1C1 = "=R[-2]C-RC[-6]"
Selection.Copy
Selection.PasteSpecial Paste:=xlValues, Operation:=xlNone, SkipBlanks:=
    False, Transpose:=False
Application.CutCopyMode = False

' Range("N19").Select
' If ActiveCell = 0 Then
' ActiveCell.FormulaR1C1 = "=RC[-6]*RC[-4]"
' Selection.Copy
' Selection.PasteSpecial Paste:=xlValues, Operation:=xlNone, SkipBlanks:=
' False, Transpose:=False
' Application.CutCopyMode = False
' End If

' Range("J19").Select
' If ActiveCell = 0 Then
' ActiveCell.FormulaR1C1 = "=RC[4]/RC[-2]"
' Selection.Copy
' Selection.PasteSpecial Paste:=xlValues, Operation:=xlNone, SkipBlanks:=
' False, Transpose:=False
' Application.CutCopyMode = False
' End If

' Range("H19").Select
' If ActiveCell = 0 Then
' ActiveCell.FormulaR1C1 = "=RC[6]/RC[2]"
' Selection.Copy
' Selection.PasteSpecial Paste:=xlValues, Operation:=xlNone, SkipBlanks:=
' False, Transpose:=False
' Application.CutCopyMode = False
' End If
End Sub

```

ภาคผนวก ข2

Sub Cal_Margin()

```

Range("N21").Select
If ActiveCell = 0 Then
ActiveCell.FormulaR1C1 = "=RC[-4]*R[-2]C"
Selection.Copy
Selection.PasteSpecial Paste:=xlValues, Operation:=xlNone, SkipBlanks:=
False, Transpose:=False
Application.CutCopyMode = False
End If
Range("J21").Select
If ActiveCell = 0 Then
ActiveCell.FormulaR1C1 = "=RC[4]/R[-2]C[4]"
Selection.Copy
Selection.PasteSpecial Paste:=xlValues, Operation:=xlNone, SkipBlanks:=
False, Transpose:=False
Application.CutCopyMode = False
End If

End Sub

```

Sub Quote_date()

```

'
' Quote_date Macro
' Macro recorded 9/1/2003 by user
'
'
'
Range("H5").Select
ActiveCell.FormulaR1C1 = "=DATE(RC[14],RC[13],RC[12])"

End Sub

```

ภาคผนวก ข2

Sub Save_data()

```

'
' Save_data Macro
' Macro recorded 9/1/2003 by user
'
    Dim Dummy As Object
    Dim Work As Boolean

    Work = False

    Range("B49").Select
    If ActiveCell > 0 Then
        Range("F1").Select
        MsgBox "Please Check, Some Data are Empty"
        Work = True
        End If

    Range("B48").Select
    If ActiveCell > 0 And Work = False Then
        Range("F1").Select
        MsgBox "Forecast-Month Must After Quote Date"
        Work = True
        End If

    Range("B47").Select

    If ActiveCell > 0 And Work = False Then
        Range("F1").Select
        MsgBox "Closeout-Date Must After Quote Date"
        Work = True
        End If

    Range("F1").Select

    If Work = False Then

```

ภาคผนวก ข2

```

Range("B40:AC40").Select
Selection.Copy
Range("B42").Select
Selection.PasteSpecial Paste:=xlValues, Operation:=xlNone, SkipBlanks:=
    False, Transpose:=False
Application.CutCopyMode = False
Range("Q42").Select
ActiveCell.FormulaR1C1 = "=RC[-2]*RC[-1]"
Range("R40").Select
Selection.Copy
Application.CutCopyMode = False
Selection.Copy
Range("R42").Select
ActiveSheet.Paste
Application.CutCopyMode = False
Range("Z40").Select
Selection.Copy
Application.CutCopyMode = False
Selection.Copy
Range("Z42").Select
ActiveSheet.Paste
Application.CutCopyMode = False
Range("B42:AA42") Select

Range("B42").Select

Set Dummy = ActiveWorkbook.Sheets("Form").Range("B42")

Sheets("consolidate").Select
Range("B2").Select

Do While ActiveCell <> "" And ActiveCell <> Dummy

```

ภาคผนวก ข2

```
ActiveCell.Offset(1, 0).Range("A1").Select
```

```
Loop
```

```
Sheets("Form").Select
```

```
Application.CutCopyMode = False
```

```
Range("B42:AC42").Select
```

```
Selection.Copy
```

```
Application.CutCopyMode = False
```

```
Selection.Copy
```

```
Sheets("consolidate").Select
```

```
Selection.PasteSpecial Paste:=xlFormulas, Operation:=xlNone, SkipBlanks:=
```

```
False, Transpose:=False
```

```
Application.CutCopyMode = False
```

```
Range("B1").Select
```

```
ActiveWorkbook.Names.Add Name:="DATAA", RefersToR1C1:=ActiveCell
```

```
Selection.End(xlDown).Select
```

```
'Selection.End(xlToRight).Select
```

```
ActiveCell.Offset(0, 27).Range("A1").Select
```

```
ActiveWorkbook.Names.Add Name:="DATAB", RefersToR1C1:=ActiveCell
```

```
Range("DATAA:DATAB").Select
```

```
ActiveWorkbook.Names.Add Name:="Database", RefersToR1C1:=Range("DATAA:DATAB")
```

```
ActiveWorkbook.CustomViews("Show").Show
```

```
End If
```

```
End Sub
```

ภาคผนวก ข2

Sub Clear()

```
Range("F41:N41").Select
Selection.FormulaR1C1 = "1"
Range("T41").Select
ActiveCell.FormulaR1C1 = "1"
Range("H25").Select
ActiveCell.FormulaR1C1 = "0%"
Range("H19").Select
Selection.ClearContents
Range("J19").Select
Selection.ClearContents
Range("N19").Select
Selection.ClearContents
Range("N21").Select
Selection.ClearContents
Range("J21").Select
Selection.ClearContents
Range("H7").Select
Selection.ClearContents
Range("H5").Select
Selection.ClearContents
Range("H3").Select
Selection.ClearContents
Range("K3").Select
Selection.ClearContents
Range("H27").Select
Selection.ClearContents
Range("H29").Select
Selection.ClearContents

Range("H21").Select
Selection.ClearContents
Range("K23").Select
Selection.ClearContents
```

ภาคผนวก ข2

```

Range("H31").Select
Selection.ClearContents

Range("T4:V4").Select
Selection.Copy
Range("T27").Select
Selection.PasteSpecial Paste:=xlValues, Operation:=xlNone, SkipBlanks:=
False, Transpose:=False
Range("T29").Select
Selection.PasteSpecial Paste:=xlValues, Operation:=xlNone, SkipBlanks:=
False, Transpose:=False
Application.CutCopyMode = False
Range("H3").Select

Sheets("Sheet2").Select
Range("AAC:EEC").Select
Selection.ClearContents
Range("Q6").Select
ActiveSheet.PivotTables("PivotTable7").PivotSelect "", xlDataAndLabel
ActiveSheet.PivotTables("PivotTable7").RefreshTable
ActiveSheet.PivotTables("PivotTable7").PivotSelect "Quote No. '[All]", _
xlLabelOnly
Selection.Copy
Application.Goto Reference:="AAC"
ActiveCell.Offset(1, 0).Range("A1").Select

Selection.PasteSpecial Paste:=xlValues, Operation:=xlNone, SkipBlanks:=
False, Transpose:=False
Selection.End(xlDown).Select
Application.CutCopyMode = False
ActiveWorkbook.Names.Add Name:="BBC", RefersToR1C1:=ActiveCell
ActiveCell.Offset(0, -1).Range("A1").Select
ActiveWorkbook.Names.Add Name:="CCC", RefersToR1C1:=ActiveCell
Selection.End(xlUp).Select
Range("DDC:BBC").Select

```


ภาคผนวก ข2

```

ActiveWorkbook.Names.Add Name:="Quote_Code", RefersToR1C1:=Range("DDC:BBC")
Range("AAC:BBC").Select
ActiveWorkbook.Names.Add Name:="Quote_No", RefersToR1C1:=Range("AAC:BBC")
Range("DDC:CCC").Select
Selection.Copy
ActiveCell.Offset(0, 2).Range("A1").Select
Selection.PasteSpecial Paste:=xlValues, Operation:=xlNone, SkipBlanks:= _
    False, Transpose:=False
Selection.End(xlDown).Select
Application.CutCopyMode = False
ActiveWorkbook.Names.Add Name:="EEC", RefersToR1C1:=ActiveCell
Range("AAC:EEC").Select
ActiveWorkbook.Names.Add Name:="Quote_Code2", RefersToR1C1:=Range("AAC:EEC")

'Selection.End(xlDown).Select
'Selection.End(xlUp).Select
'ActiveCell.Offset(1, 0).Range("A1").Select
'Selection.End(xlToRight).Select
'Selection.End(xlToLeft).Select

'Sheets("Sheet2").Select
Range("AAB:EEB").Select
Selection.ClearContents

ActiveSheet.PivotTables("PivotTable1").PivotSelect "", xlDataAndLabel
ActiveSheet.PivotTables("PivotTable1").RefreshTable
ActiveSheet.PivotTables("PivotTable1").PivotSelect "Customer[All]", xlLabelOnly
Selection.Copy
Application.CutCopyMode = False
Selection.Copy
'ActiveSheet.PivotTables("PivotTable1").PivotSelect "A&A", xlDataOnly
Application.Goto Reference:="AAB"
ActiveCell.Offset(1, 0).Range("A1").Select

```

ภาคผนวก ข2

```

Selection.PasteSpecial Paste:=xlValues, Operation:=xlNone, SkipBlanks:=
    False, Transpose:=False
Application.CutCopyMode = False

Selection.End(xlDown).Select
Application.CutCopyMode = False
ActiveWorkbook.Names.Add Name:="BBB", RefersToR1C1:=ActiveCell
ActiveCell.Offset(0, -1).Range("A1").Select
ActiveWorkbook.Names.Add Name:="CCB", RefersToR1C1:=ActiveCell
Selection.End(xlUp).Select
Range("DDB:BBB").Select
ActiveWorkbook.Names.Add Name:="Customer_Code", RefersToR1C1:=Range("DDB:BBB")
Range("AAB:BBB").Select
ActiveWorkbook.Names.Add Name:="Customer", RefersToR1C1:=Range("AAB:BBB")
ActiveCell.Select

Range("DDB:CCB").Select
Selection.Copy
ActiveCell.Offset(0, 2).Range("A1").Select
Selection.PasteSpecial Paste:=xlValues, Operation:=xlNone, SkipBlanks:=
    False, Transpose:=False
Selection.End(xlDown).Select
Application.CutCopyMode = False
ActiveWorkbook.Names.Add Name:="EEB", RefersToR1C1:=ActiveCell
Range("AAB:EEB").Select
ActiveWorkbook.Names.Add Name:="Customer_Code2", RefersToR1C1:=Range("AAB:EEB")

Worksheets("Form").Select

```

ภาคผนวก ข2

End Sub

Sub Current_day()

Range("T4:V4").Select

Selection.Copy

Range("T5").Select

Selection.PasteSpecial Paste:=xlValues, Operation:=xlNone, SkipBlanks:=

False, Transpose:=False

Range("H5").Select

Application.CutCopyMode = False

ActiveCell.FormulaR1C1 = "=DATE(RC[14],RC[13],RC[12])"

Range("H5").Select

End Sub

Sub Edit_Quote()

Range("B45").Select

ActiveCell.FormulaR1C1 = "1"

ActiveWorkbook.CustomViews("Quote_view").Show

Range("D4").Select

End Sub

Sub Edit_Quote2()

Dim Dummy As Object

Set Dummy = ActiveWorkbook.Sheets("Form").Range("B44")

Sheets("consolidate").Select

Range("B2").Select

Do While ActiveCell <> "" And ActiveCell <> Dummy

ภาคผนวก ข2

```
ActiveCell.Offset(1, 0).Range("A1").Select
```

```
Loop
```

```
If ActiveCell = Dummy Then
```

```
ActiveCell.Offset(0, 0).Range("A1:AB1").Select
```

```
' Selection.Copy
```

```
'Application.CutCopyMode = False
```

```
Selection.Copy
```

```
Sheets("Form").Select
```

```
Range("B42").Select
```

```
Selection.PasteSpecial Paste:=xlFormulas, Operation:=xlNone, SkipBlanks:=
```

```
False, Transpose:=False
```

```
Application.CutCopyMode = False
```

```
End If
```

```
Range("F43:N43").Select
```

```
Application.CutCopyMode = False
```

```
Selection.Copy
```

```
Range("F41").Select
```

```
Selection.PasteSpecial Paste:=xlValues, Operation:=xlNone, SkipBlanks:=
```

```
False, Transpose:=False
```

```
ActiveWindow.SmallScroll ToRight:=8
```

```
Range("T43").Select
```

```
Application.CutCopyMode = False
```

```
Selection.Copy
```

```
Range("T41").Select
```

```
Selection.PasteSpecial Paste:=xlValues, Operation:=xlNone, SkipBlanks:=
```

```
False, Transpose:=False
```

```
ActiveWindow.SmallScroll ToRight:=-8
```

ภาคผนวก ข2

```
Range("B42").Select  
Application.CutCopyMode = False  
Selection.Copy
```

```
Range("H3").Select  
Selection.PasteSpecial Paste:=xlValues, Operation:=xlNone, SkipBlanks:=  
False, Transpose:=False
```

```
Range("C42").Select  
Application.CutCopyMode = False  
Selection.Copy
```

```
Range("K3").Select  
Selection.PasteSpecial Paste:=xlValues, Operation:=xlNone, SkipBlanks:=  
False, Transpose:=False
```

```
Range("D42").Select
```

```
Selection.Copy
```

```
Range("H5").Select  
Selection.PasteSpecial Paste:=xlValues, Operation:=xlNone, SkipBlanks:=  
False, Transpose:=False  
Application.CutCopyMode = False
```

```
Range("T5").Select  
ActiveCell.FormulaR1C1 = "=DAY(RC[-12])"
```

```
Range("U5").Select  
ActiveCell.FormulaR1C1 = "=MONTH(RC[-13])"
```

```
Range("V5").Select  
ActiveCell.FormulaR1C1 = "=YEAR(RC[-14])"
```

ภาคผนวก ข2

```
Range("T5:V5").Select
Selection.Copy
Selection.PasteSpecial Paste:=xlValues, Operation:=xlNone, SkipBlanks:=
False, Transpose:=False
Application.CutCopyMode = False
```

```
Range("E42").Select
Selection.Copy
```

```
Range("H7").Select
Selection.PasteSpecial Paste:=xlValues, Operation:=xlNone, SkipBlanks:=
False, Transpose:=False
```

```
Range("O42").Select
Application.CutCopyMode = False
Selection.Copy
Application.CutCopyMode = False
Selection.Copy
```

```
Range("H19").Select
Selection.PasteSpecial Paste:=xlValues, Operation:=xlNone, SkipBlanks:=
False, Transpose:=False
```

```
Range("P42").Select
Application.CutCopyMode = False
Selection.Copy
Application.CutCopyMode = False
Selection.Copy
```

```
Range("J19").Select
Selection.PasteSpecial Paste:=xlValues, Operation:=xlNone, SkipBlanks:=
False, Transpose:=False
```

```
Range("Q42").Select
Application.CutCopyMode = False
Selection.Copy
```

```
Range("N19").Select
Selection.PasteSpecial Paste:=xlValues, Operation:=xlNone, SkipBlanks:=
```

ภาคผนวก ข2

```

False, Transpose:=False
Range("S42").Select
Application.CutCopyMode = False
Selection.Copy
Range("J21").Select
Selection.PasteSpecial Paste:=xlValues, Operation:=xlNone, SkipBlanks:=
False, Transpose:=False

Range("U42").Select
Application.CutCopyMode = False
Selection.Copy

Range("H25").Select
Selection.PasteSpecial Paste:=xlValues, Operation:=xlNone, SkipBlanks:=
False, Transpose:=False
Application.CutCopyMode = False
Range("V25").Select
ActiveCell.FormulaR1C1 = "=RC[-14]*100"
Selection.Copy
Selection.PasteSpecial Paste:=xlValues, Operation:=xlNone, SkipBlanks:=
False, Transpose:=False
Application.CutCopyMode = False

Range("V42").Select
Selection.Copy
Application.CutCopyMode = False
Selection.Copy

Range("H27").Select
Selection.PasteSpecial Paste:=xlValues, Operation:=xlNone, SkipBlanks:=
False, Transpose:=False
Application.CutCopyMode = False

Range("U27").Select
ActiveCell.FormulaR1C1 = "=MONTH(RC[-13])"

```

ภาคผนวก ข2

```
Range("V27").Select
ActiveCell.FormulaR1C1 = "=YEAR(RC[-14])"
Range("U27:V27").Select
Selection.Copy
Selection.PasteSpecial Paste:=xlValues, Operation:=xlNone, SkipBlanks:=
    False, Transpose:=False
Application.CutCopyMode = False
```

```
Range("W42").Select
Selection.Copy
```

```
Range("H29").Select
Selection.PasteSpecial Paste:=xlValues, Operation:=xlNone, SkipBlanks:=
    False, Transpose:=False
Application.CutCopyMode = False
```

```
Range("T29").Select
ActiveCell.FormulaR1C1 = "=DAY(RC[-12])"
```

```
Range("U29").Select
ActiveCell.FormulaR1C1 = "=MONTH(RC[-13])"
```

```
Range("V29").Select
ActiveCell.FormulaR1C1 = "=YEAR(RC[-14])"
Range("T29:V29").Select
Selection.Copy
Selection.PasteSpecial Paste:=xlValues, Operation:=xlNone, SkipBlanks:=
    False, Transpose:=False
Application.CutCopyMode = False
```


ภาคผนวก ข2

```
Range("X42").Select
```

```
Selection.Copy
```

```
Range("H31").Select
```

```
Selection.PasteSpecial Paste:=xlValues, Operation:=xlNone, SkipBlanks:= _
```

```
False, Transpose:=False
```

```
Range("Y42").Select
```

```
Application.CutCopyMode = False
```

```
Selection.Copy
```

```
Range("I11").Select
```

```
Selection.PasteSpecial Paste:=xlValues, Operation:=xlNone, SkipBlanks:= _
```

```
False, Transpose:=False
```

```
Range("AA42").Select
```

```
Application.CutCopyMode = False
```

```
Selection.Copy
```

```
Range("N21").Select
```

```
Selection.PasteSpecial Paste:=xlValues, Operation:=xlNone, SkipBlanks:= _
```

```
False, Transpose:=False
```

```
Application.CutCopyMode = False
```

```
Range("AB42").Select
```

```
Application.CutCopyMode = False
```

```
Selection.Copy
```

```
Range("H21").Select
```

```
Selection.PasteSpecial Paste:=xlValues, Operation:=xlNone, SkipBlanks:= _
```

```
False, Transpose:=False
```

```
Application.CutCopyMode = False
```

```
Range("AC42").Select
```

```
Application.CutCopyMode = False
```

ภาคผนวก ข2

```

Selection.Copy
Range("K23").Select
Selection.PasteSpecial Paste:=xlValues, Operation:=xlNone, SkipBlanks:=
False, Transpose:=False
Application.CutCopyMode = False

```

```

ActiveWorkbook.CustomViews("Show").Show

```

```

End Sub

```

Sub Edit_Cancel()

```

ActiveWorkbook.CustomViews("Show").Show
End Sub

```

Sub Save_database()

```

Dim Dummy As Object

```

```

Sheets("consolidate").Select
Set Dummy = ActiveWorkbook.Sheets("consolidate").Range("AF1")

```

```

Sheets("consolidate").Copy
ActiveWorkbook.SaveAs FileName:=Dummy, FileFormat:=xlNormal, Password:="", WriteResPassword =""
ReadOnlyRecommended:=False, CreateBackup:=False
ActiveWorkbook.Close
ActiveWorkbook.CustomViews("Show").Show

```

```

End Sub

```

Sub Recal()

ภาคผนวก ข2

```

Range("D9").Select
If ActiveCell = 0 Then
ActiveCell.FormulaR1C1 = "=R[1]C*R[-1]C"
Selection.Copy
Selection.PasteSpecial Paste:=xlValues, Operation:=xlNone, SkipBlanks:=
    False, Transpose:=False
Application.CutCopyMode = False
End If
Range("D10").Select
If ActiveCell = 0 Then
ActiveCell.FormulaR1C1 = "=R[-1]C/R[-2]C"
Selection.Copy
Selection.PasteSpecial Paste:=xlValues, Operation:=xlNone, SkipBlanks:=
    False, Transpose:=False
Application.CutCopyMode = False
End If
End Sub

```

Sub Extrax_data()

```

'
' Extrax_data Macro
' Macro recorded 21/3/2003 by user
'
'
Range("Database").AdvancedFilter Action:=xlFilterCopy, CriteriaRange:=Range
    ("O17:u18"), CopyToRange:=Range("B22:l22"), Unique:=False

End Sub

```

Sub Edit_Quote3()

ภาคผนวก ข2

Dim Dummy As Object

```
Set Dummy = ActiveWorkbook.Sheets("Target").Range("B19")
```

```
Sheets("consolidate").Select
```

```
Range("B2").Select
```

```
Do While ActiveCell <> "" And ActiveCell <> Dummy
```

```
ActiveCell.Offset(1, 0).Range("A1").Select
```

```
Loop
```

```
If ActiveCell = Dummy Then
```

```
ActiveCell.Offset(0, 0).Range("A1:Z1").Select
```

```
' Selection.Copy
```

```
'Application.CutCopyMode = False
```

```
Selection.Copy
```

```
Sheets("Form").Select
```

```
Range("B42").Select
```

```
Selection.PasteSpecial Paste:=xlFormulas, Operation:=xlNone, SkipBlanks:=
```

```
False, Transpose:=False
```

```
Application.CutCopyMode = False
```

```
End If
```

```
Range("F43:N43").Select
```

```
Application.CutCopyMode = False
```

```
Selection.Copy
```

```
Range("F41").Select
```

```
Selection.PasteSpecial Paste:=xlValues, Operation:=xlNone, SkipBlanks:=
```

```
False, Transpose:=False
```

ภาคผนวก ข2

```
ActiveWindow.SmallScroll ToRight:=8
Range("T43").Select
Application.CutCopyMode = False
Selection.Copy
Range("T41").Select
Selection.PasteSpecial Paste:=xlValues, Operation:=xlNone, SkipBlanks:=
    False, Transpose:=False
ActiveWindow.SmallScroll ToRight:=-8
Range("B42").Select
Application.CutCopyMode = False
Selection.Copy

Range("H3").Select
Selection.PasteSpecial Paste:=xlValues, Operation:=xlNone, SkipBlanks:=
    False, Transpose:=False

Range("C42").Select
Application.CutCopyMode = False
Selection.Copy

Range("K3").Select
Selection.PasteSpecial Paste:=xlValues, Operation:=xlNone, SkipBlanks:=
    False, Transpose:=False

Range("D42").Select

Selection.Copy

Range("H5").Select
Selection.PasteSpecial Paste:=xlValues, Operation:=xlNone, SkipBlanks:=
    False, Transpose:=False
Application.CutCopyMode = False
```

ภาคผนวก ข2

```
Range("T5").Select
```

```
ActiveCell.FormulaR1C1 = "=DAY(RC[-12])"
```

```
Range("U5").Select
```

```
ActiveCell.FormulaR1C1 = "=MONTH(RC[-13])"
```

```
Range("V5").Select
```

```
ActiveCell.FormulaR1C1 = "=YEAR(RC[-14])"
```

```
Range("T5:V5").Select
```

```
Selection.Copy
```

```
Selection.PasteSpecial Paste:=xlValues, Operation:=xlNone, SkipBlanks:=
```

```
False, Transpose:=False
```

```
Application.CutCopyMode = False
```

```
Range("E42").Select
```

```
Selection.Copy
```

```
Range("H7").Select
```

```
Selection.PasteSpecial Paste:=xlValues, Operation:=xlNone, SkipBlanks:=
```

```
False, Transpose:=False
```

```
Range("O42").Select
```

```
Application.CutCopyMode = False
```

```
Selection.Copy
```

```
Application.CutCopyMode = False
```

```
Selection.Copy
```

```
Range("H19").Select
```

```
Selection.PasteSpecial Paste:=xlValues, Operation:=xlNone, SkipBlanks:=
```

```
False, Transpose:=False
```

```
Range("P42").Select
```

```
Application.CutCopyMode = False
```

```
Selection.Copy
```

```
Application.CutCopyMode = False
```

```
Selection.Copy
```

ภาคผนวก ข2

```

Range("J19").Select
Selection.PasteSpecial Paste:=xlValues, Operation:=xlNone, SkipBlanks:=
    False, Transpose:=False
Range("Q42").Select
Application.CutCopyMode = False
Selection.Copy
Range("N19").Select
Selection.PasteSpecial Paste:=xlValues, Operation:=xlNone, SkipBlanks:=
    False, Transpose:=False
Range("S42").Select
Application.CutCopyMode = False
Selection.Copy
Range("J21").Select
Selection.PasteSpecial Paste:=xlValues, Operation:=xlNone, SkipBlanks:=
    False, Transpose:=False

Range("U42").Select
Application.CutCopyMode = False
Selection.Copy

Range("H25").Select
Selection.PasteSpecial Paste:=xlValues, Operation:=xlNone, SkipBlanks:=
    False, Transpose:=False
Application.CutCopyMode = False
Range("V25").Select
ActiveCell.FormulaR1C1 = "=RC[-14]*100"
Selection.Copy
Selection.PasteSpecial Paste:=xlValues, Operation:=xlNone, SkipBlanks:=
    False, Transpose:=False
Application.CutCopyMode = False

Range("V42").Select
Selection.Copy
Application.CutCopyMode = False
Selection.Copy

```

ภาคผนวก ข2

```
Range("H27").Select
Selection.PasteSpecial Paste:=xlValues, Operation:=xlNone, SkipBlanks:=
    False, Transpose:=False
Application.CutCopyMode = False
```

```
Range("U27").Select
ActiveCell.FormulaR1C1 = "=MONTH(RC[-13])"
```

```
Range("V27").Select
ActiveCell.FormulaR1C1 = "=YEAR(RC[-14])"
Range("U27:V27").Select
Selection.Copy
Selection.PasteSpecial Paste:=xlValues, Operation:=xlNone, SkipBlanks:=
    False, Transpose:=False
Application.CutCopyMode = False
```

```
Range("W42").Select
Selection.Copy
```

```
Range("H29").Select
Selection.PasteSpecial Paste:=xlValues, Operation:=xlNone, SkipBlanks:=
    False, Transpose:=False
Application.CutCopyMode = False
```

```
Range("T29").Select
ActiveCell.FormulaR1C1 = "=DAY(RC[-12])"
```

```
Range("U29").Select
ActiveCell.FormulaR1C1 = "=MONTH(RC[-13])"
```

```
Range("V29").Select
ActiveCell.FormulaR1C1 = "=YEAR(RC[-14])"
```


ภาคผนวก ข2

```
Range("T29:V29").Select
Selection.Copy
Selection.PasteSpecial Paste:=xlValues, Operation:=xlNone, SkipBlanks:= _
    False, Transpose:=False
Application.CutCopyMode = False
```

```
Range("X42").Select
Selection.Copy
```

```
Range("H31").Select
Selection.PasteSpecial Paste:=xlValues, Operation:=xlNone, SkipBlanks:= _
    False, Transpose:=False
```

```
Range("Y42").Select
```

```
Application.CutCopyMode = False
Selection.Copy
```

```
Range("I11").Select
Selection.PasteSpecial Paste:=xlValues, Operation:=xlNone, SkipBlanks:= _
    False, Transpose:=False
```

```
Range("AA42").Select
Application.CutCopyMode = False
Selection.Copy
```

```
Range("N21").Select
Selection.PasteSpecial Paste:=xlValues, Operation:=xlNone, SkipBlanks:= _
    False, Transpose:=False
Application.CutCopyMode = False
ActiveWorkbook.CustomViews("Show").Show
```

End Sub

ภาคผนวก ข2

Sub Chang_Percent()

```
' Chang_Percent Macro
```

```
' Macro recorded 18/4/2003 by user
```

```
Range("E6").Select
```

```
ActiveCell.FormulaR1C1 = "=RC[10]/100"
```

```
Range("E6").Select
```

```
Selection.Copy
```

```
Selection.PasteSpecial Paste:=xlValues, Operation:=xlNone, SkipBlanks:= _
```

```
False, Transpose:=False
```

```
Application.CutCopyMode = False
```

```
End Sub
```

Sub New_Customer2()

```
Range("C4").Select
```

```
Selection.Copy
```

```
Sheets("Sheet2").Select
```

```
Range("K7").Select
```

```
Selection.PasteSpecial Paste:=xlValues, Operation:=xlNone, SkipBlanks:= _
```

```
False, Transpose:=False
```

```
Sheets("Form").Select
```

```
ActiveWindow.SmallScroll Down:=6
```

```
Range("F41").Select
```

```
Application.CutCopyMode = False
```

```
ActiveCell.FormulaR1C1 = "1"
```

ภาคผนวก ข2

```
ActiveWorkbook.CustomViews("Show").Show
```

```
End Sub
```

Sub Target()

```
' Target Macro
```

```
' Macro recorded 19/04/2003 by user
```

```
ActiveWorkbook.CustomViews("Target").Show
```

```
End Sub
```

Sub Sale_Status()

```
' Sale_Status Macro
```

```
' Macro recorded 19/04/2003 by user
```

```
ActiveWorkbook.CustomViews("Sale_status").Show
```

```
End Sub
```

Sub Margin_Adj()

```
' Margin_Adj Macro
```

```
' Macro recorded 19/04/2003 by user
```

```
ActiveWorkbook.CustomViews("Cal_Margin_Percent").Show
```

```
End Sub
```

Sub Use_Margin()

ภาคผนวก ข2

```
' Use_Margin Macro
' Macro recorded 19/04/2003 by user

Range("E6").Select
Selection.Copy
Sheets("Form").Select
Range("J21").Select
Selection.PasteSpecial Paste:=xlValues, Operation:=xlNone, SkipBlanks:= _
    False, Transpose:=False
Sheets("Sheet1").Select
Range("G6").Select
Application.CutCopyMode = False
Selection.Copy
Sheets("Form").Select
Range("H25").Select
Selection.PasteSpecial Paste:=xlValues, Operation:=xlNone, SkipBlanks:= _
    False, Transpose:=False
Sheets("Sheet1").Select
Application.CutCopyMode = False
ActiveWorkbook.CustomViews("Show").Show

Cal_Sale

End Sub
```

ภาคผนวก ค

แบบสอบถาม ผลการทดลองใช้โปรแกรมในการตัดสินใจด้านงานขาย

เพื่อประกอบการวิจัยการพัฒนาระบบข้อมูลเพื่อการตัดสินใจด้านการขายกรณีศึกษาบริษัทตัวแทนจำหน่ายเครื่องสูบน้ำ
 นิสิตปริญญาโทภาควิชาวิศวกรรมอุตสาหกรรม ภาคนอกเวลาราชการ คณะวิศวกรรมศาสตร์ อุบลราชธานีมหาวิทยาลัย

1. เวลาที่ใช้ในการวิเคราะห์ข้อมูล

() ช้า () ปานกลาง () รวดเร็ว
2. ความง่าย และสะดวกใน การใช้งาน

() มาก () ปานกลาง () น้อย
3. ผลการวิเคราะห์ข้อมูล

() ถูกต้อง () ไม่ถูกต้อง
4. ท่านจะนำไปใช้อีกหรือไม่

() ใช่ () ไม่ใช่
5. ข้อคิดเห็นเพิ่มเติม หรือข้อเสนอแนะ

ภาคผนวก ง

แบบสอบถาม ประกอบการออกแบบระบบข้อมูลเพื่อการตัดสินใจด้านงานขาย

เพื่อประกอบการวิจัยการพัฒนาระบบข้อมูลเพื่อการตัดสินใจด้านการขายกรณีศึกษาบริษัทตัวแทนจำหน่ายเครื่องสูบน้ำ
 นิสิตปริญญาโทภาควิชาวิศวกรรมอุตสาหกรรม ภาคนอกเวลาราชการ คณะวิศวกรรมศาสตร์ จุฬาลงกรณ์มหาวิทยาลัย

1. โปรดระบุ ตำแหน่ง ผู้ตอบแบบสอบถาม
 () ผู้บริหาร () วิศวกรฝ่ายขาย
2. ท่านต้องการ สารสนเทศใดบ้างประกอบการตัดสินใจด้านการขาย
 - a. การกำหนด %margin () ต้องการ () ไม่จำเป็น
 - b. ข้อมูลการขายของลูกค้า () ต้องการ () ไม่จำเป็น
 - c. ข้อมูลการพยากรณ์การขาย () ต้องการ () ไม่จำเป็น
 - d. ผลรวมสถานะการขาย () ต้องการ () ไม่จำเป็น
 - e. อื่นๆ โปรดระบุ
 -
 -
3. โปรดระบุ ปัญหาด้านระบบข้อมูล (ถ้ามี)

4. รูปแบบที่ต้องการหาก มีระบบข้อมูลเพื่อการตัดสินใจ

5. โปรดระบุ ข้อเสนอแนะเพิ่มเติม (ถ้ามี)



ประวัติผู้เขียนวิทยานิพนธ์

ผู้เขียนสำเร็จการศึกษาชั้นมัธยมศึกษาตอนต้นจาก โรงเรียนกรุงเทพคริสเตียนวิทยาลัย และชั้นมัธยมศึกษาตอนปลาย จาก โรงเรียนเตรียมอุดมศึกษา และได้รับปริญญาวิศวกรรมศาสตรบัณฑิต สาขาวิศวกรรมเครื่องกล จากจุฬาลงกรณ์มหาวิทยาลัย ในปี พ.ศ.2535

ได้เริ่มการทำงานภายหลังจากจบการศึกษา ในปี พ.ศ.2535 โดยเป็นวิศวกรโครงการ ควบคุมการติดตั้งระบบภายในอาคาร และ โรงงานอุตสาหกรรม ของบริษัทผู้รับเหมาเอกชนรายหนึ่ง เป็นระยะเวลา 6 ปี ก่อนที่ผู้เขียนจะได้ร่วมงานกับบริษัทกรณีศึกษาตัวอย่าง ในปี พ.ศ.2540 โดยรับผิดชอบด้านงานขายและการพัฒนาตลาดระบบวิศวกรรม และเทคโนโลยีสุญญากาศ