

REFERENCES

- Allegue, L.B., and Hinge, J. (2012) Biogas and bio-syngas upgrading report, Danish Technological Institute.
- Arvanitoyannis, I.S. (2008) 3 - ISO 14040: Life Cycle Assessment (LCA) – Principles and Guidelines. Waste Management for the Food Industries. S. A. Ioannis, Dr and D. P. D. Ph.D.A2 - Ioannis S. Arvanitoyannis. City: Academic Press, 97-132.
- Börjesson, P., and Tufvesson, L.M. (2010) Agricultural crop-based biofuels – efficiency and environmental performance including direct land use changes. Cleaner Production, 19, 108-120.
- Broch, A., Hoekman, S.K., and Unnasch, S. (2013) A review of variability in indirect land use change assessment and modeling in biofuel policy, USA.
- Buratti, C., Barbanera, M., and Fantozzi, F. (2013) Assessment of GHG emissions of biomethane from energy cereal crops in Umbria, Italy. Applied Energy, 108, 128-136.
- Chén, P., Overholt, A., Rutledge, B., and Tomic, J. (2010) Economic Assessment of Biogas and Biomethane Production from Manure. White Paper. Pasadena, CA, USA.
- Consoli, F., Allen, D., Boustead, I., Fava, J., Franklin, W., A Jensen, A., Oude, N.D., Parrish, R., Perriman, R., Postlethwait, D., Quay, B., Séguin, J., and Vigon, B. (1993) Guidelines for life-cycle assessment: a “Code of practice”. Society of Environmental Toxicology and Chemistry (SETAC). SETAC Workshop, Sesimbra, Portugal.
- Croezen, H., and Kampman, B. (2008) Calculating greenhouse gas emissions of EU biofuels. CE Delft. The Netherlands.
- Demirbas, M.F. (2009) Biorefineries for biofuel upgrading: A critical review Applied Energy. Applied Energy, 86, S151-S161.
- Deng, L., and Hägg, M. (2010) Techno-economic evaluation of biogas upgrading process using CO₂ facilitated transport membrane. International Journal of Greenhouse Gas Control, 4(4), 638-646.

- Ekvall, T. (2005) SETAC summaries. Journal of Cleaner Production. 13(13-14), 1351-1358.
- Gallagher, E. (2008) The Gallagher Review of the Indirect Effects of Biofuel Production. Renewable Fuels Agency. London, U.K.
- Guinée, J.B., Heijungs, R., Huppes, G., Zamagni, A., Masoni, P., Buonamici, R., Ekvall, T., and Rydberg, T. (2010) Life cycle assessment: Past, present, and future. Environmental Science & Technology. 45(1), 90-96.
- Hennecke, A.M., Faist, M., Reinhardt, J., Junquera, V., Neeft, J., and Fehrenbach, H. (2013) Biofuel greenhouse gas calculations under the European Renewable Energy Directive – A comparison of the BioGrace tool vs. the tool of the Roundtable on Sustainable Biofuels. Applied Energy. 102, 55-62.
- Hoefnagels, R., Smeets, E., and Faaij A. (2010) Greenhouse gas footprints of different biofuel production systems. Renewable and Sustainable Energy Reviews. 14, 1661-1694.
- Jonsson, S., and Westman, J. (2011) Cryogenic biogas upgrading using plate heat exchangers. Master's thesis within the Sustainable Energy System Master's programme. Chalmers University of Technology. Sweden
- Klöppfer, W. (1997) Life cycle assessment from the beginning to the current state. Environmental Science and Pollution Research. 4(4), 223-228.
- Krich, K., Augenstein, D., Batmale, J.P., Benemann, J., Rutledge, B., and Salour, D. (2005) Biomethane from Dairy Waste: A Sourcebook for the Production and Use of Renewable Natural Gas in California. USA.
- Kukkonen, C. (2010) Dedicated energy crops for bioenergy. School of environment and energy, Shenzhen graduate school, Peking University, China.
- Lindfors, L.G., Christiansen, K., Hoffmann, L., Virtanen, Y., Juntilla, V., and Hanssen O.J. (1995) Nordic Guidelines on Life-Cycle Assessment. Nordic Council of Ministers, Copenhagen.
- Margareta, P. (2003) Evaluation of upgrading techniques for biogas. School of Environmental Engineering, Lund University, Sweden.
- National Metal and Materials Technology Center (MTEC). (2010) A study for eco-efficiency comparison of transportation fuels by using life cycle assessment technique. Supported by PTT Public Company Limited. Bangkok, Thailand.

- Papong, S., Rotwiroon, P., Chatchupong, T., and Malakul, P. (2013) Life cycle energy and environmental assessment of bio-CNG utilization from cassava starch wastewater treatment plants in Thailand. Renewable Energy. 65, 64-69.
- Perriman, R.J. (1993) A summary of SETAC guidelines for life cycle assessment. Journal of Cleaner Production. 1(3-4), 209-212.
- Pertl, A., Mostbauer, P., and Obersteiner, G. (2010) Climate balance of biogas upgrading systems. Waste Management. 30, 92-99.
- Reap, J., Roman, F., Duncan, S., and Bras, B. (2008) A survey of unresolved problems in life cycle assessment Part 1: goal and scope and inventory analysis. The International Journal of Life Cycle Assessment. 13(4), 290-300.
- Rebitzer, G., Ekvall, T., Frischknecht, R., Hunkeler, D., Norris, G., Rydberg, T., Schmidt, W.P., Suh, S., Weidema, B.P., and Pennington, D.W. (2004) Life cycle assessment: Part 1: Framework, goal and scope definition, inventory analysis, and applications. Environment International. 30(5), 701-720.
- Requena, J.F., Guimaraes, A.C., Alpera, S.Q., Gangas, E.R., Hernandez-Navarro, S., Gracia, L.M., Martin-Gil, J., and Cuesta, H.F. (2010) Life cycle assessment (LCA) of the biofuel production process from sunflower oil, rapeseed oil and soybean oil. Fuel Processing Technology. 92, 190-199.
- Russell, A., Ekvall, T., and Baumann, H. (2005) Life cycle assessment – introduction and overview. Cleaner Production. 13(13-14), 1207-1210.
- Scholz, M., Melin, T., and Wessling, M. (2012) Transforming biogas into biomethane using membrane technology. Renewable and Sustainable Energy Reviews. 17, 199-212.
- Starr, K., Gabarrell, X., Villalba, G., Talens, L., and Lombardi, L. (2012) Life cycle assessment of biogas upgrading technologies. Waste Management. 32, 991-999.

APPENDICES

Appendix A Life Cycle Inventory (LCI)

Table A1 Results of the inventory analysis of napier grass plantation and harvesting

Unit process: Napier grass plantation and harvesting					
Input			Output		
Type	Unit	Quantity	Type	Unit	Quantity
Material			Product		
Fertilizer (N)	kg	2	Napier grass	Ton	1
Fertilizer (P)	kg	0.13	(Curb weight)		
Fertilizer (K)	kg	0.13			
Fuel			Air emission		
Diesel	L	1.568	Carbon dioxide	kg	4.247
			Dinitrogen monoxide	kg	0.03143
Resource					
Surface water	L	26,666.67			

Table A2 Results of the inventory analysis of biogas production process

Unit process: Biogas production					
Input			Output		
Type	Unit	Quantity	Type	Unit	Quantity
Substrate			Product		
Pig liquids	m ³	0.017644	Biogas	m ³	1
Napier grass	kg	0.022148	(39.36°C, 1.01 bar)		
Energy			Air emission		
Electricity	kWh	0.102	Methane	kg	0.020300
Fuel					
Diesel	kg	0.0017490			

Table A3 Results of the inventory analysis of biogas upgrading process

Unit process: Biogas upgrading					
Input			Output		
Type	Unit	Quantity	Type	Unit	Quantity
Substrate Biogas (39.36°C, 1.01 bar)	m ³	1.43823	Product Biomethane (30°C, 1 barg)	m ³	1
Energy Electricity	kWh	0.45257	Air emission Methane	kg	0.0081199

Table A4 Results of the inventory analysis of compression and gas station (MTEC, 2012)

Unit process: Compression and gas station					
Input			Output		
Type	Unit	Quantity	Type	Unit	Quantity
Substrate Biomethane (25°C, 180 psig)	m ³	0.0855	Product Compressed bio- methane gas (CBG)	kg	1
Energy Electricity	kWh	0.1084	Air emission Methane	mg	532.35
			Carbon dioxide	mg	206.46
Chemical Compressor oil	L	3.068E-04	Liquid waste Waste oil	mg	188.77

Table A5 Results of The inventory data of napier grass transportation (full load)
(MTEC, 2012)

Inventory of napier grass transportation (full load)					
Input			Output		
Type	Amount	Unit	Type	Amount	Unit
Fuel			Product		
Diesel	7.769E-02	kg	Napier grass	318.932	kg
			Emission to Air		
			Carbon dioxide	2.29E+02	g
			Carbon monoxide	2.84E+00	g
			Nitrogen oxides	6.13E-01	g
			Particulate matter	1.91E-02	g
			Hydrocarbons	5.30E-01	g
			Methane	1.28E-02	g
			Benzene	1.00E-02	g
			Toluene	4.31E-03	g
			Xylene	4.31E-03	g
			Non – methane volatile organic compounds	2.76E-01	g
			Sulfur oxides	5.25E-02	g
			Nitrous Oxide	9.41E-03	g
			Cadmium	7.48E-07	g
			Copper	1.27E-04	g
			Chromium	3.75E-06	g
			Nickel	5.25E-06	g
			Selenium	7.48E-07	g
			Zinc	7.48E-05	g
			Lead	8.23E-09	g
			Mercury	1.50E-09	g

Table A6 Results of The inventory data of napier grass transportation (no-load)
(MTEC, 2012)

Inventory of napier grass transportation (no-load)					
Input			Output		
Type	Amount	Unit	Type	Amount	Unit
Fuel			Product		
Diesel	5.758E-07	kg	Napier grass	-	kg
			Emission to Air		
			Carbon dioxide	1.65E-03	g
			Carbon monoxide	2.04E-05	g
			Nitrogen oxides	4.41E-06	g
			Particulate matter	1.38E-07	g
			Hydrocarbons	3.82E-06	g
			Methane	9.15E-08	g
			Benzene	7.25E-08	g
			Toluene	3.05E-08	g
			Xylene	3.05E-08	g
			Non – methane volatile organic compounds	2.05E-06	g
			Sulfur oxides	3.89E-07	g
			Nitrous Oxide	7.00E-08	g
			Cadmium	5.55E-12	g
			Copper	9.45E-10	g
			Chromium	2.78E-11	g
			Nickel	3.89E-11	g
			Selenium	5.55E-12	g
			Zinc	5.55E-10	g
			Lead	6.10E-14	g
			Mercury	1.11E-14	g

Table A7 Results of The inventory data of CBG transportation (full load) (MTEC, 2012)

Inventory of CBG transportation (full load)					
Input			Output		
Type	Amount	Unit	Type	Amount	Unit
Fuel			Product		
Diesel	1.03851	kg	CBG	5422.46	kg
			Emission to Air		
			Carbon dioxide	3.27E+03	g
			Carbon monoxide	6.88E+00	g
			Nitrogen oxides	1.32E+01	g
			Particulate matter	6.83E-01	g
			Hydrocarbons	1.59E+00	g
			Methane	3.81E-02	g
			Benzene	3.02E-02	g
			Toluene	1.27E-02	g
			Xylene	1.27E-02	g
			Non – methane volatile organic compounds	4.86E+00	g
			Sulfur oxides	6.99E-01	g
			Nitrous Oxide	1.26E-01	g
			Cadmium	1.00E-05	g
			Copper	1.70E-03	g
			Chromium	5.01E-05	g
			Nickel	6.99E-05	g
			Selenium	1.00E-05	g
			Zinc	1.00E-03	g
			Lead	1.10E-07	g
			Mercury	2.01E-08	g

Table A8 Results of The inventory data of CBG transportation (no-load) (MTEC, 2012)

Inventory of CBG transportation (no-load)					
Input			Output		
Type	Amount	Unit	Type	Amount	Unit
Fuel			Product		
Diesel	1.29E-06	kg	CBG	-	kg
			Emission to Air		
			Carbon dioxide	3.77E-03	g
			Carbon monoxide	7.93E-06	g
			Nitrogen oxides	1.52E-05	g
			Particulate matter	7.85E-07	g
			Hydrocarbons	1.83E-06	g
			Methane	4.40E-08	g
			Benzene	3.48E-08	g
			Toluene	1.47E-08	g
			Xylene	1.47E-08	g
			Non – methane volatile organic compounds	6.06E-06	g
			Sulfur oxides	8.74E-07	g
			Nitrous Oxide	1.57E-07	g
			Cadmium	1.25E-11	g
			Copper	2.12E-09	g
			Chromium	6.24E-11	g
			Nickel	8.74E-11	g
			Selenium	1.25E-11	g
			Zinc	1.25E-09	g
			Lead	1.37E-13	g
			Mercury	2.50E-14	g

Table A9 Results of The inventory data of CBG combustion stage (PTT, 2012)

Inventory of CBG combustion					
Input			Output		
Type	Amount	Unit	Type	Amount	Unit
Fuel	-		Emission to Air		
CBG	1	kg	Carbon dioxide	2329.93	g
			Carbon monoxide	16.5880	g
			Nitrogen oxides	0.30872	g
			Hydrocarbons	2.07795	g

Appendix B Life Cycle Impact Assessment (LCIA)

Table B1 Results of the impact assessment of 1 MJ CBG by using CML 2 baseline 2000 V2.03 / World, 1995

Impact category	Unit	Total
abiotic depletion	kg Sb eq	1.48E-04
global warming (GWP100)	kg CO2 eq	5.68E-02
ozone layer depletion (ODP)	kg CFC-11 eq	5.74E-12
human toxicity	kg 1,4-DB eq	9.28E-05
fresh water aquatic ecotox.	kg 1,4-DB eq	2.49E-06
marine aquatic ecotoxicity	kg 1,4-DB eq	2.45E-02
terrestrial ecotoxicity	kg 1,4-DB eq	2.66E-07
photochemical oxidation	kg C2H4	2.12E-05
acidification	kg SO2 eq	4.80E-05
eutrophication	kg PO4--- eq	7.34E-06

Table B2 Results of the impact assessment of 1 MJ CBG by using Eco-indicator 95 V2.03 / Europe e

Impact category	Unit	Total
greenhouse	kg CO2	3.58E-02
ozone layer	kg CFC11	7.56E-12
acidification	kg SO2	5.60E-05
eutrophication	kg PO4	7.35E-06
heavy metals	kg Pb	7.77E-10
carcinogens	kg B(a)P	1.43E-11
winter smog	kg SPM	8.45E-04
summer smog	kg C2H4	3.13E-05
pesticides	kg act.subst	0.00E+00
energy resources	MJ LHV	2.22E-01
solid waste	kg	2.07E-05

Table B3 Results of the impact assessment of napier grass cultivation stage for producing 1 MJ of CBG by using CML 2 baseline 2000 V2.03 / World, 1995

Impact category	Unit	Total
abiotic depletion	kg Sb eq	1.09E-07
global warming (GWP100)	kg CO2 eq	4.31E-05
ozone layer depletion (ODP)	kg CFC-11 eq	2.78E-23
human toxicity	kg 1,4-DB eq	1.03E-07
fresh water aquatic ecotox.	kg 1,4-DB eq	2.62E-10
marine aquatic ecotoxicity	kg 1,4-DB eq	1.87E-09
terrestrial ecotoxicity	kg 1,4-DB eq	3.09E-11
photochemical oxidation	kg C2H4	1.73E-09
acidification	kg SO2 eq	8.29E-08
eutrophication	kg PO4--- eq	1.26E-08

Table B4 Results of the impact assessment of napier grass cultivation stage for producing 1 MJ of CBG by using Eco-indicator 95 V2.03 / Europe e

Impact category	Unit	Total
greenhouse	kg CO2	4.02E-05
ozone layer	kg CFC11	3.70E-23
acidification	kg SO2	9.32E-08
eutrophication	kg PO4	1.22E-08
heavy metals	kg Pb	6.81E-16
carcinogens	kg B(a)P	2.44E-15
winter smog	kg SPM	2.50E-08
summer smog	kg C2H4	9.53E-10
pesticides	kg act.subst	0.00E+00
energy resources	MJ LHV	2.25E-04
solid waste	kg	6.60E-09

Table B5 Results of the impact assessment of biogas production process for producing 1 MJ of CBG by using CML 2 baseline 2000 V2.03 / World, 1995

Impact category	Unit	Total
abiotic depletion	kg Sb eq	3.49E-05
global warming (GWP100)	kg CO2 eq	3.17E-02
ozone layer depletion (ODP)	kg CFC-11 eq	3.99E-13
human toxicity	kg 1,4-DB eq	1.79E-05
fresh water aquatic ecotox.	kg 1,4-DB eq	4.24E-07
marine aquatic ecotoxicity	kg 1,4-DB eq	4.61E-03
terrestrial ecotoxicity	kg 1,4-DB eq	- 5.27E-08
photochemical oxidation	kg C2H4	7.47E-06
acidification	kg SO2 eq	1.01E-05
eutrophication	kg PO4--- eq	1.45E-06

Table B6 Results of the impact assessment of biogas production process for producing 1 MJ of CBG by using Eco-indicator 95 V2.03 / Europe e

Impact category	Unit	Total
greenhouse	kg CO2	1.72E-02
ozone layer	kg CFC11	5.32E-13
acidification	kg SO2	1.16E-05
eutrophication	kg PO4	1.45E-06
heavy metals	kg Pb	1.53E-10
carcinogens	kg B(a)P	3.08E-12
winter smog	kg SPM	1.90E-04
summer smog	kg C2H4	8.65E-06
pesticides	kg act.subst	0.00E+00
energy resources	MJ LHV	5.36E-02
solid waste	kg	4.96E-06

Table B7 Results of the impact assessment of biogas upgrading process for producing 1 MJ of CBG by using CML 2 baseline 2000 V2.03 / World, 1995

Impact category	Unit	Total
abiotic depletion	kg Sb eq	9.97E-05
global warming (GWP100)	kg CO2 eq	2.26E-02
ozone layer depletion (ODP)	kg CFC-11 eq	1.22E-12
human toxicity	kg 1,4-DB eq	5.44E-05
fresh water aquatic ecotox.	kg 1,4-DB eq	1.30E-06
marine aquatic ecotoxicity	kg 1,4-DB eq	1.41E-02
terrestrial ecotoxicity	kg 1,4-DB eq	1.61E-07
photochemical oxidation	kg C2H4	3.49E-06
acidification	kg SO2 eq	3.03E-05
eutrophication	kg PO4--- eq	4.40E-06

Table-B8 Results of the impact assessment of biogas upgrading process for producing 1 MJ of CBG by using Eco-indicator 95 V2.03 / Europe e

Impact category	Unit	Total
greenhouse	kg CO2	1.69E-02
ozone layer	kg CFC11	1.63E-12
acidification	kg SO2	3.48E-05
eutrophication	kg PO4	4.40E-06
heavy metals	kg Pb	4.66E-10
carcinogens	kg B(a)P	9.39E-12
winter smog	kg SPM	5.80E-04
summer smog	kg C2H4	3.88E-06
pesticides	kg act.subst	0.00E+00
energy resources	MJ LHV	1.48E-01
solid waste	kg	1.39E-05

Table B9 Results of the impact assessment of compression and gas station phase for producing 1 MJ of CBG by using CML 2 baseline 2000 V2.03 / World, 1995

Impact category	Unit	Total
abiotic depletion	kg Sb eq	1.31E-05
global warming (GWP100)	kg CO2 eq	1.81E-03
ozone layer depletion (ODP)	kg CFC-11 eq	4.12E-12
human toxicity	kg 1,4-DB eq	1.16E-05
fresh water aquatic ecotox.	kg 1,4-DB eq	7.72E-07
marine aquatic ecotoxicity	kg 1,4-DB eq	5.83E-03
terrestrial ecotoxicity	kg 1,4-DB eq	5.24E-08
photochemical oxidation	kg C2H4	1.57E-07
acidification	kg SO2 eq	3.99E-06
eutrophication	kg PO4--- eq	5.76E-07

Table B10 Results of the impact assessment of compression and gas station phase for producing 1 MJ of CBG by using Eco-indicator 95 V2.03 / Europe e

Impact category	Unit	Total
greenhouse	kg CO2	1.66E-03
ozone layer	kg CFC11	5.40E-12
acidification	kg SO2	4.57E-06
eutrophication	kg PO4	5.76E-07
heavy metals	kg Pb	1.56E-10
carcinogens	kg B(a)P	1.84E-12
winter smog	kg SPM	7.53E-05
summer smog	kg C2H4	1.86E-07
pesticides	kg act.subst	0.00E+00
energy resources	MJ LHV	1.98E-02
solid waste	kg	1.81E-06

Table B11 Results of the impact assessment of transportation phase for producing 1 MJ of CBG by using CML 2 baseline 2000 V2.03 / World, 1995

Impact category	Unit	Total
abiotic depletion	kg Sb eq	9.90E-08
global warming (GWP100)	kg CO2 eq	1.61E-05
ozone layer depletion (ODP)	kg CFC-11 eq	7.33E-23
human toxicity -	kg 1,4-DB eq	4.43E-07
fresh water aquatic ecotox.	kg 1,4-DB eq	1.99E-09
marine aquatic ecotoxicity	kg 1,4-DB eq	9.23E-06
terrestrial ecotoxicity	kg 1,4-DB eq	1.56E-10
photochemical oxidation	kg C2H4	1.54E-09
acidification	kg SO2 eq	3.95E-08
eutrophication	kg PO4--- eq	7.98E-09

Table B12 Results of the impact assessment of-transportation phase for producing 1 MJ of CBG by using Eco-indicator 95 V2.03 / Europe e

Impact category	Unit	Total
greenhouse	kg CO2	1.59E-05
ozone layer	kg CFC11	9.78E-23
acidification	kg SO2	5.03E-08
eutrophication	kg PO4	7.98E-09
heavy metals	kg Pb	2.23E-12
carcinogens	kg B(a)P	8.70E-15
winter smog	kg SPM	7.33E-09
summer smog	kg C2H4	1.24E-08
pesticides	kg act.subst	0.00E+00
energy resources	MJ LHV	2.22E-04
solid waste	kg	1.74E-08

Table B13 Results of the impact assessment of combustion phase for producing 1 MJ of CBG by using CML 2 baseline 2000 V2.03 / World, 1995

Impact category	Unit	Total
abiotic depletion	kg Sb eq	0.00E+00
global warming (GWP100)	kg CO2 eq	5.69E-04
ozone layer depletion (ODP)	kg CFC-11 eq	0.00E+00
human toxicity	kg 1,4-DB eq	8.31E-06
fresh water aquatic ecotox.	kg 1,4-DB eq	0.00E+00
marine aquatic ecotoxicity	kg 1,4-DB eq	0.00E+00
terrestrial ecotoxicity	kg 1,4-DB eq	0.00E+00
photochemical oxidation	kg C2H4	1.00E-05
acidification	kg SO2 eq	3.46E-06
eutrophication	kg PO4--- eq	9.00E-07

Table B14 Results of the impact assessment of combustion phase for producing 1 MJ of CBG by using Eco-indicator 95 V2.03 / Europe e

Impact category	Unit	Total
greenhouse	kg CO2	0.00E+00
ozone layer	kg CFC11	0.00E+00
acidification	kg SO2	4.85E-06
eutrophication	kg PO4	9.00E-07
heavy metals	kg Pb	0.00E+00
carcinogens	kg B(a)P	0.00E+00
winter smog	kg SPM	0.00E+00
summer smog	kg C2H4	1.86E-05
pesticides	kg act.subst	0.00E+00
energy resources	MJ LHV	0.00E+00
solid waste	kg	0.00E+00

Appendix C The Regeneration Process of 4A Molecular Sieve (UOP LLC.)

Type 4A molecular sieve can be regenerated for re-use by purging or evacuating at elevated temperatures. The degree of regeneration (water removal) is dependent on the temperature and humidity of the purge gas.

4A molecular sieve is available in granular, spherical or extrudate form. The nominal sizes of the granules and spheres or “beads” are shown below. The diameters for the extrudates or “pellets” are also shown; the length is approximately twice the diameter.

Table C1 Physical properties of 4A molecular sieve

	14 x30 granular	10x20 Beads	8x12 Beads	4x8 Beads	1/16" Pellets	1/8" Pellets
Nominal Pore Diameter (angstroms)	4	4	4	4	4	4
Particle Size Diameter (mm)	0.8	1.4	2.0	4.0	1.6	3.2
Bulk Density (lbs/ft ³)	44	44	44	44	44	44
Heat of Adsorption (Btu lb H ₂ O)	1800	1800	1800	1800	1800	1800
Crush Strength (lbs)	N/A	N/A	7	18	10	20
Equilibrium H ₂ O Capacity* (wt-%)	22	22	22	22	22	22
Moisture content (wt-%)	1	1	1	1	1	1

*Measured at 17.5 mm Hg and 25°C

Appendix D Land Use Change Calculation (Commission decision of 10 June 2010, The European Commission)

Calculation of Carbon Stocks

For the calculation of the carbon stock of the reference land use (CS_R) and the carbon stock of the actual land use (CS_A) the following rule shall apply:

$$CS_i = (SOC + C_{VEG}) \times A$$

where:

CS_i = the carbon stock per unit area associated with the land use i (measured as mass of carbon per unit area, including both soil and vegetation);

SOC = soil organic carbon (measured as mass of carbon per hectare);

C_{VEG} = above and below ground vegetation carbon stock (measured as mass of carbon per hectare);

A = factor scaling to the area concerned (measured as hectares per unit area).

Soil Organic Carbon Stock

For the calculation of SOC the following rule may be used:

$$SOC = SOC_{ST} \times F_{LU} \times F_{MG} \times F_I$$

where:

SOC = soil organic carbon (measured as mass of carbon per hectare);

SOC_{ST} = standard soil organic carbon in the 0-30 centimeter topsoil layer (measured as mass of carbon per hectare);

F_{LU} = land use factor reflecting the difference in soil organic carbon associated with the type of land use compared to the standard soil organic carbon;

F_{MG} = management factor reflecting the difference in soil organic carbon associated with the principle management practice compared to the standard soil organic carbon;

F_I = input factor reflecting the difference in soil organic carbon associated with different levels of carbon input to soil compared to the standard soil organic carbon.

Actual land use;*For grassland:*

- Soil type = Low activity clay soils
- Climate region = Tropical, moist
- Land use = Savannah
- Management = Improved
- Input = Medium

$$\text{So, } SOC_{ST} = 47 \text{ tons C/ha}$$

$$F_{LU} = 1$$

$$F_{MG} = 1.17$$

$$F_I = 1$$

$$SOC = SOC_{ST} \times F_{LU} \times F_{MG} \times F_I$$

$$SOC = 54.99 \text{ tons C/ha}$$

$$\text{And } C_{VEG} = 8.1 \text{ tons C/ha}$$

$$\text{So, } CS_A = 63.09 \text{ tons C/ha}$$

Reference land use;*For forest land:*

- Climate region = Tropical, moist
- Land use = Shifting cultivation-mature fallow

$$\text{So, } SOC_{ST} = 47 \text{ tons C/ha}$$

$$F_{LU} = 0.8$$

$$SOC = SOC_{ST} \times F_{LU}$$

$$SOC = 37.6 \text{ tons C/ha}$$

And

- Forest land, having more than 30% canopy cover
- Ecological zone = Tropical moist deciduous forest
- Continent = Asia (continental)

$$C_{VEG} = 110 \text{ tons/ha}$$

$$\text{So, } CS_R = 147.6 \text{ tons C/ha}$$

$$\begin{aligned} \text{Emission from land use change} &= (CS_R - CS_A) \times (3.664/20) \\ &= 15.4935 \text{ tons CO}_2 \text{ eq. ha}^{-1} \text{ year}^{-1} \\ &= 2.479 \text{ tons CO}_2 \text{ eq. rai}^{-1} \text{ year}^{-1} \end{aligned}$$

Appendix E The Analyzed CBG Production Plant, Mae Taeng, Chiang Mai, Thailand

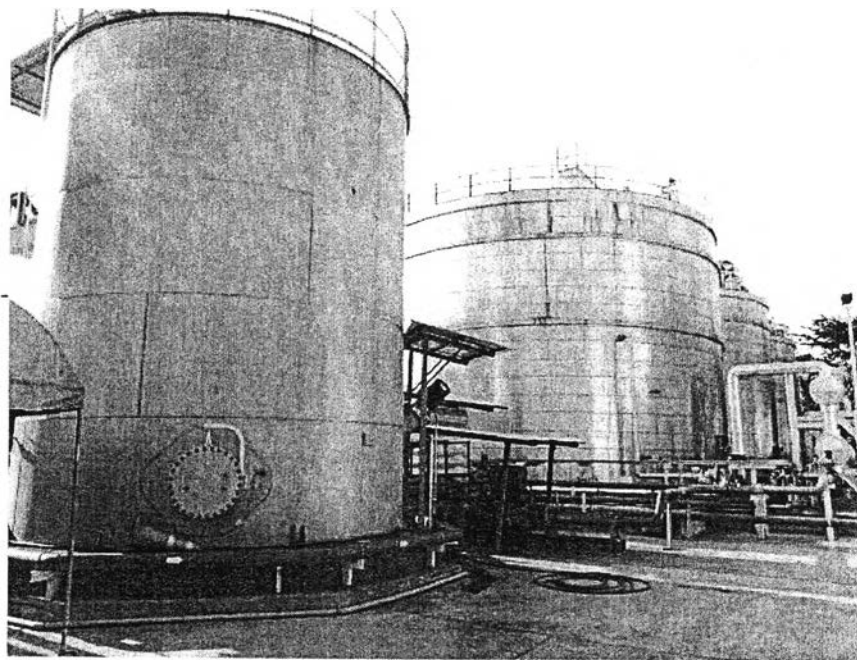


Figure E1 The analyzed CBG production plant (1).

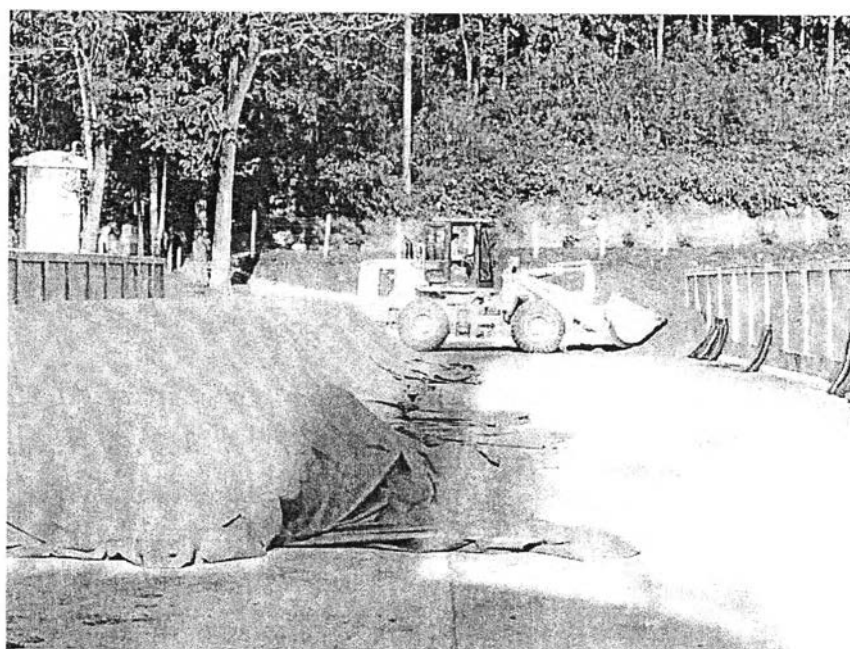


Figure E2 The analyzed CBG production plant (2).



Figure E3 The analyzed CBG production plant (3).



Figure E4 The analyzed CBG production plant (4).

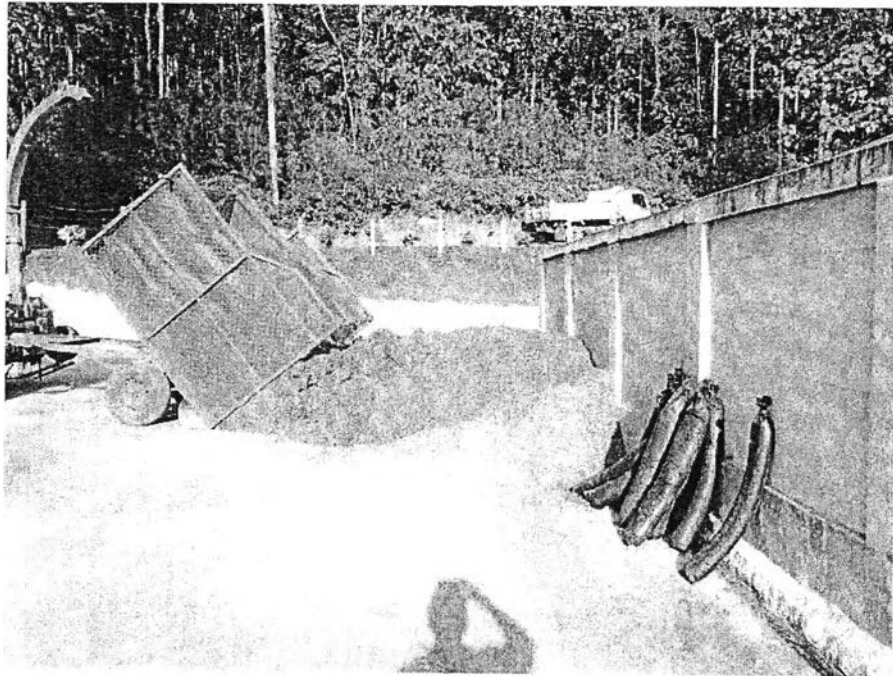


Figure E5 The analyzed CBG production plant (5).



Figure E6 The analyzed CBG production plant (6).

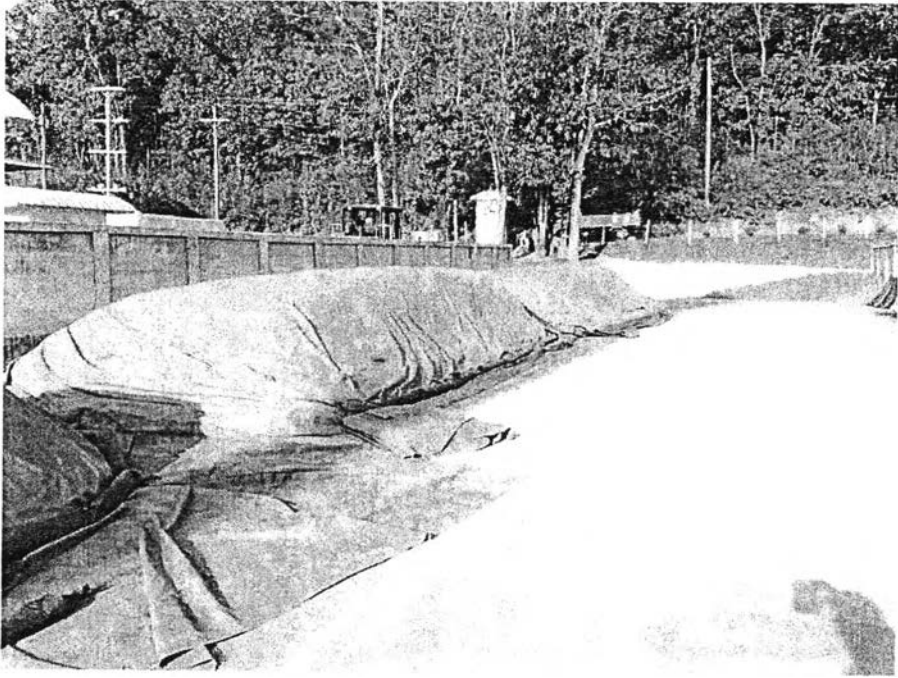


Figure E7 The analyzed CBG production plant (7).

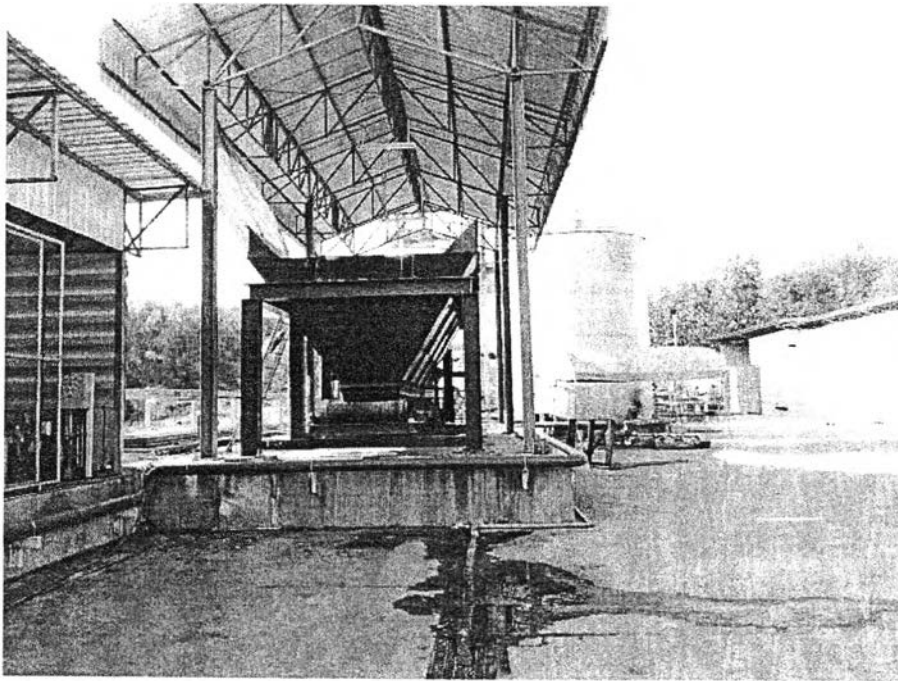


Figure E8 The analyzed CBG production plant (8).

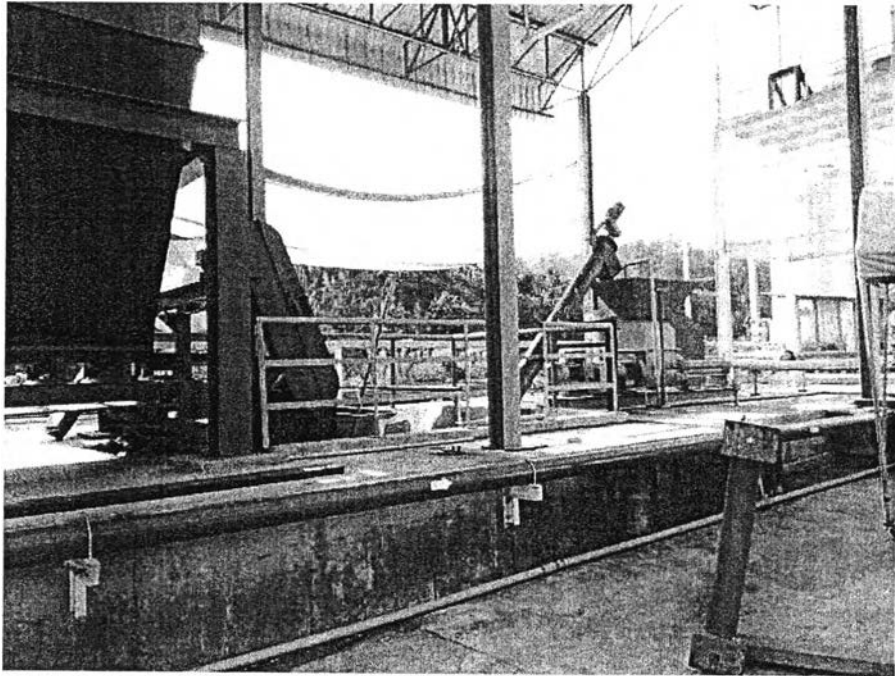


Figure E9 The analyzed CBG production plant (9).

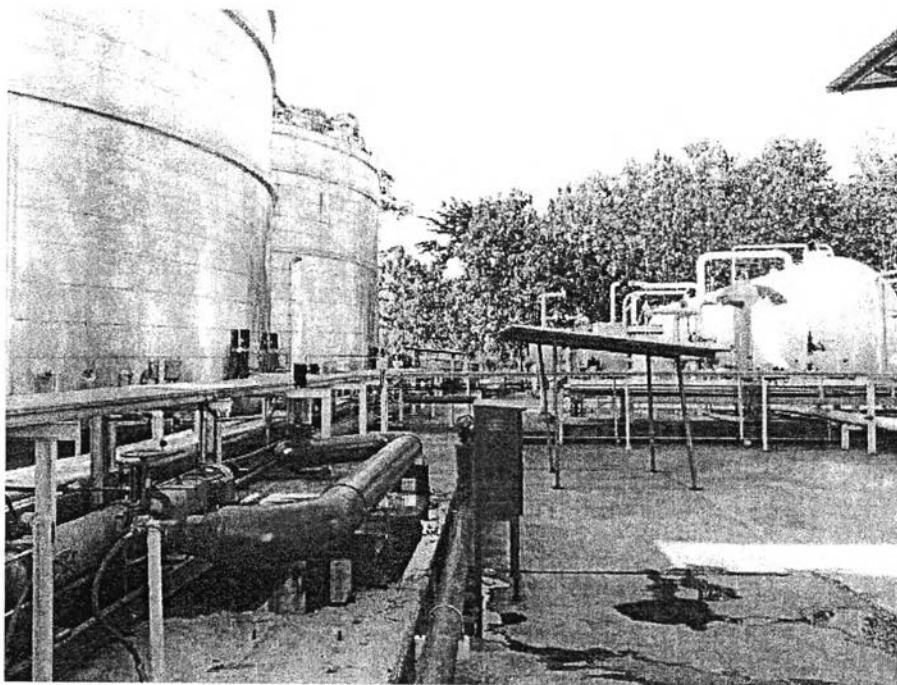


Figure E10 The analyzed CBG production plant (10).

