

## BIBLIOGRAPHY

- Abeywickrama, B.A. 1973. A Revised Handbook to the Flora of Ceylon. Vol. I. Part I. Srilanka : University of Ceylon. pp. 76-81.
- Aubreville, A. et Jean-F Leroy. 1970. Florae De Cambodge, Du Laos et Du Vietnam. n° 11. Paris : Museum National D' Histoire Naturelle. pp. 3-98
- Backer, C.A. and R.C. Bakhuizen Van Den Brink, 1963. Flora of Java. Vol. I. Groningen : N.V.P. Noordhoff. 648 pp.
1965. Flora of Java. Vol. II. Groningen : N.V.P. Noordhoff. 641 pp.
1968. Flora of Java. Vol. III. Groningen : N.V.P. Noordhoff. 761 pp.
- Bailey, L.H. 1969. Manual of Cultivated Plants. U.S.A. : Macmillan Company. 1116 pp.
- Bor, N.L. 1960. Grasses of Burma, Ceylon, India, and Pakistan. Vol. I. London : Pergamon Press. 767 pp.
1962. Gramineae. Studies in the Flora of Thailand. 20 (2) : 141-178, 1962.
- Craib, W.G. 1912. Contribution to the Flora of Siam. Addita-  
menta I. London : Darling and Son Ltd. pp.  
151-152.
- Craib, W.G. 1923-1951. Florae Siamensis Enumeratio, Vol. I-III.  
Bangkok : The Bangkok Time Press Ltd.

- Gagnepain, F. & A. Guillaumin & M. H. Lecomte 1909-1942. Flore Generale de L' Indo-Chine. Tome I-VII. Paris : Masson ET C<sup>ie</sup>. Editeurs.
- Gamble, J. S. 1915-1928. Flora of the Presidency of Madras. Vol. I-II. Adlard & Son & West Newman Ltd.
- Hara, H. 1966. The Flora of Eastern Himalaya. Japan : The University of Tokyo Press. pp. 42-452.  
1971. The Flora of Eastern Himalaya. Vol. II. Japan : The University of Tokyo Press. pp. 14-196.
- Henderson, M. R. 1954. Malayan Wild Flowers. Part. I-II. Singapore : Kelley & Walsh, Ltd. 472 pp.
- Hooker, J. D. 1875. Flora of British India. Vol. I. London : L. Reeve & Co., Ltd.. 740 pp.  
1879. Flora of British India. Vol. II. Kent : L. Reeve & Co., Ltd.. 791 pp.  
1882. Flora of British India. Vol. III. Kent : L. Reeve & Co., Ltd.. 711 pp.  
1885. Flora of British India. Vol. IV. London : L. Reeve & Co., Ltd.. 730 pp.  
1890. Flora of British India. Vol. V. London : L. Reeve & Co., Ltd.. 910 pp.  
1894. Flora of British India. Vol. VI. London : L. Reeve & Co., Ltd.. 792 pp.  
1897. Flora of British India. Vol. VII. Kent : L. Reeve & Co., Ltd.. 842 pp.

- Hooker, J.D. and B.D. Jackson. 1895. Index Kewensis. Tomus I. Oxford : The Clarendon Press. 1299 pp.
1895. Index Kewensis. Tomus II. Oxford : The Clarendon Press. 1268 pp.
- 1886-1950. Index Kewensis-Supplementum. Vol. I-XI. Oxford : The Clarendon Press.
- Hutchinson, J. 1960. Families of Flowering Plants. Vol. I. 2<sup>nd</sup> ed. Oxford : The Clarendon Press. pp. 1-510.
- 1960 Families of Flowering Plants. Vol. II. 2<sup>nd</sup> ed. Oxford : The Clarendon Press. pp. 511-792.
1964. The Genera of Flowering Plants. Vol. I. Oxford : The Clarendon Press. pp. 1-516 pp.
1967. The Genera of Flowering Plants. Vol. II. Oxford : The Clarendon Press. 659 pp.
- Kerr, A.F.G. and F.D. Ryan. 1911. Dipterocarpaceae of Northern Siam. Jour. Siam Soc. VIII(I) : 1-27.
- Komes, W.T. 1960. Thai Plants Names. Bangkok : Royal Forest Department. 871 pp.
- Merrill, E.D. 1921. Flora of Borneo. Singapore : Fraser & Neave, Ltd.. 637 pp.
- Nairne, A.K. 1938. The Flowering Plants of Western India. London : W.H. Allen & Co.. 401 pp.
- Quisumbing, E. 1951. Medical Plants of the Philippines. Manila : Bureau of Printing : 1234 pp.

- Ridley, H.N. 1922. The Flora of the Malay Peninsula. Vol. I (Polypetalae). London : L.Reeve & Co.,Ltd.. 912 pp.
1923. The Flora of the Malay Peninsula. Vol. II (Gamopetalae). London : L.Reeve & Co.,Ltd.. 672 pp.
1924. The Flora of the Malay Peninsula. Vol. III (Apetalae). London : L.Reeve & Co.,Ltd.. 405 pp.
1924. The Flora of the Malay Peninsula. Vol. IV (Monocotyledones). London : L.Reeve & Co., Ltd.. 383 pp.
1925. The Flora of the Malay Peninsula. Vol. V (Monocotyledones). London : L.Reeve & Co., Ltd.. 470 pp.
- Roxburgh, W. 1874. Flora Indica. Calcutta : Thacker, Spink and Co.. 763 pp.
- Smitinand, T. 1958. Identification Keys to the Dipterocarpaceae of Thailand. Nat. Hist. Bull. Siam Soc. 19 : 57-83.
- Reserved Tree of Northeastern Thailand. Bangkok : Asrct. 19 pp.
1963. Dipterocarpaceae. Studies in the Flora of Thailand. 23 (1) : 17-23.
- 1970 Flora of Thailand. Vol. II. Part I. Bangkok : The Asrct Press. pp. 1-92.

1972. Flora of Thailand. Vol. II. Part II.  
Bangkok : The Asrct Press. pp. 93-196.
1975. Flora of Thailand. Vol. II. Part III.  
Bangkok : The Asrct Press. pp. 197-280.
1974. Flora of Sakaerat. Part I. Bangkok :  
Asrct. 38 pp.
- Van Steenis, C.G.G.J. 1963. Pacific Plant Area. Vol. I. Manila :  
Bureav of Printing. 297 pp.
- Willis, J.C. 1966. A Dictionary of the Flowering Plants and  
Ferns. 7<sup>th</sup> ed. London : Cambridge University  
Press. 1214 pp.
- .....

APPENDIX

Illustration

Plant Community and Certain Dominant Species  
in Deciduous Forest in Caucasus



FIGURE 1. View of plant community at More-Din-Daeng in dry and hot season. The ground covered by YAH HUK (Arundinaria pusilla, A. Cheval. & A. Searus) and seedlings of TUNG (Chorua obtusa, Wall.). (26<sup>th</sup> April, 1975)





FIGURE II. Showing the vegetation in dry and hot season. (April)



FIGURE III. Seedlings of TENG (Shorea obtusa, Wall.)  
the dominant species of deciduous  
forest. (Wong-Wang, April)



FIGURE IV. Vegetation of deciduous forest in rainy season. (5<sup>th</sup> August, 1975)



FIGURE V. View of plant community at Hong-Wang. (August)



FIGURE VI. View of plant community at Sri-Tan. The undergrowths are seedlings of TENG (Shorea obtusa, Wall.) and PHLAUNG (Dipterocarpus tuberculatus, Roxb.).



FIGURE VII. Seedlings of PHLAUNG (Dipterocarpus tuberculatus, Roxb.) in rainy season.



FIGURE VIII. View of plant community at More-Din-Daeng.  
MAI DAENG (Xylia kerrii, Craib & Hutchinson)  
is a predominate species. (5<sup>th</sup> December, 1975)



FIGURE IX. The dominant species that cover the ground in deciduous forest is YAH PHEK (Arundinaria pusilla, A. Cheval. & A. Camus).





FIGURE X. Vegetation of deciduous forest in dry season. The annual ground fire regularly cleans the herbaceous undergrowth and litters. (More-Din-Daeng)



FIGURE XI. View of plant community at More-Din-Daeng.  
(26<sup>th</sup> February, 1976)



FIGURE XII. View of plant community at Sri-Tan. PHA YAWM (Shorea obtusa, Wall,) is a predominate species. (26<sup>th</sup> February, 1976)



FIGURE XIII. PHLAUNG (Dipterocarpus tuberculatus, Roxb.)



FIGURE XIV. TENG or JIK (Shorea obtusa, Wall.)

.....  
..... 204 .....  
..... 13 P.W. 22 .....  
.....

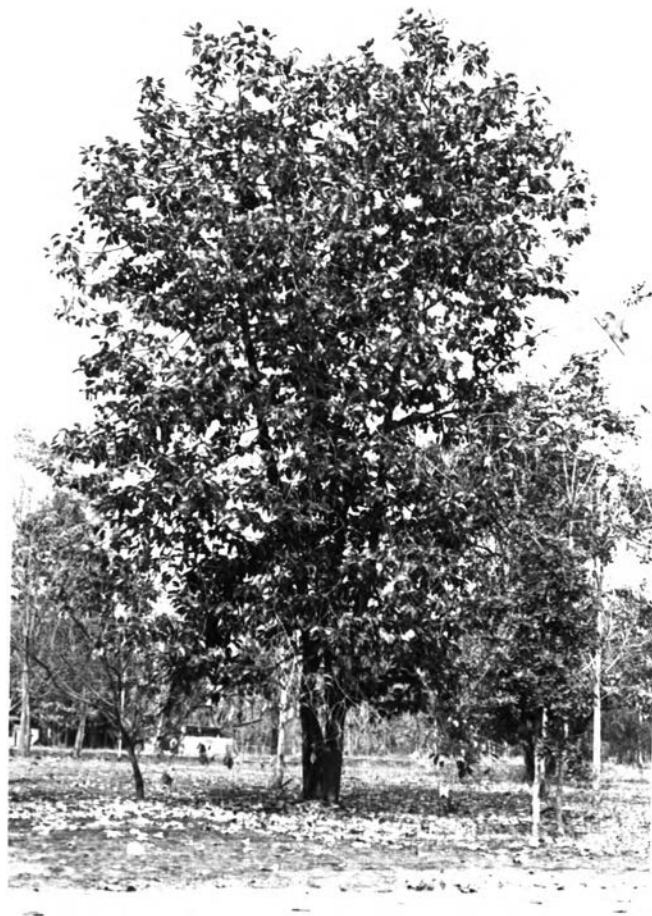


FIGURE XV. HIANG (Dipterocarpus obtusifolius, Teysm.  
ex Miq.)



FIGURE XVI. YANG KRAD (Dipterocarpus intricatus, Dyer)



FIGURE XVII. PHA YAWM (Shorea talura, Roxb.)





FIGURE XVIII. YAW PA (Morinda tinctoria, Roxb.)



FIGURE XIX. MAI DAENG (Xylia kerrii, Craib & Hutchinson)



FIGURE XX. KAOW (Adina cordifolia, Benth. & Hook.)



FIGURE XXI. PHAN SARD (Erythrophloeum succirubrum, Gagnep.)



FIGURE XXII. NGUI PA (Bombax sp., Linn.)



FIGURE XXIII. KA DCN (Careya arborea, Roxb.)



FIGURE XXIV. NAM KIANG (Melanorrhoea laccifera, Pierre)



FIGURE XXV. SUM RONG (Sterculia foetida, Linn.)



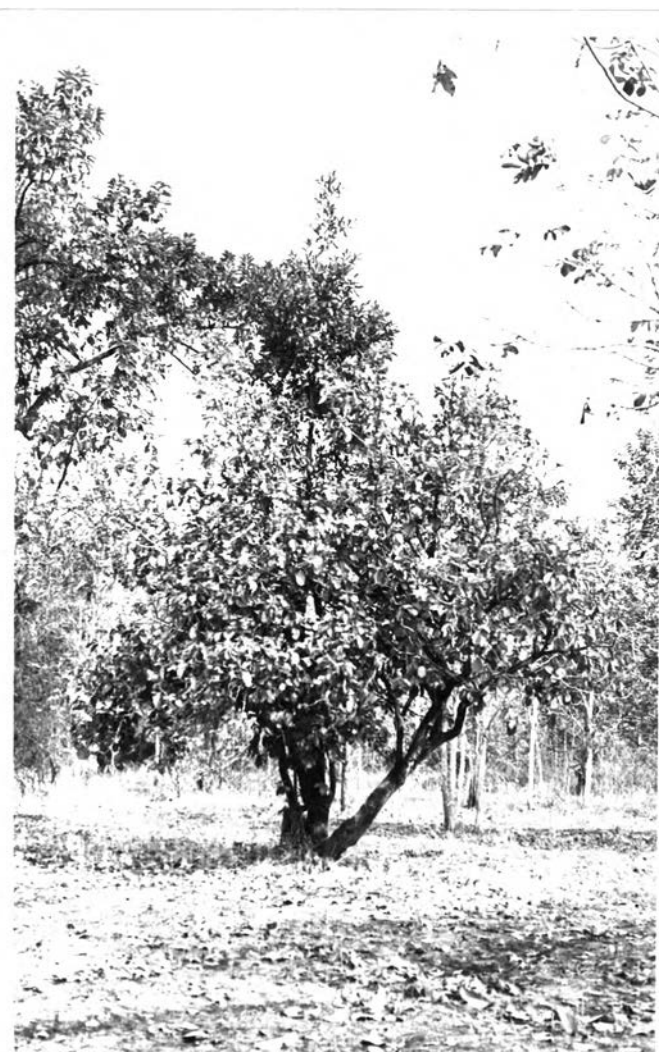


FIGURE XXVI. MUAD KARB (Aporosa villosa, Baill.)



FIGURE XXVII. KAE PHUNG MOO (Markhamia stipulata Seem.)



FIGURE XXVIII. KLOI TOA PHOO (Dioscorea sp., Plum. ex Linn.)



FIGURE XXIX. KLOI TOA MIA (Dioscorea sp., Plum. ex Linn.)



FIGURE XXX. Fruits of Dioscorea sp.



FIGURE XXXI. NAM NOM SAWUN (Hoya kerrii, Craib)



FIGURE XXXII. SUNG WARN PHRA INTRA (Cassytha filiformis,  
Linn.) growing on TON WHAH (Eugenia sp.)



FIGURE XXXIII. PRONG PA (Cycas siamensis, Miq.) a common shrub in deciduous forest.





FIGURE XXXIV. TANG KAI NOI (Leea indica, Merr.) (August)



FIGURE XXXV. Very dense of YAH PHEK (Arundinaria pusilla,  
A. Cheval. & A. Camus) in rainy season.



FIGURE XXXVI. YAH PHEK (Arundinaria pusilla, A. Cheval. & A. Camus) common species cover the ground of deciduous forest in dry and hot season.



FIGURE XXXVII. View of plant community at More-Din-Daeng,  
YAH KA (Imperata cylindrica, (Nees) C.E. Hubb.) is  
a predominate species. (February)



FIGURE XXXVIII. Pressing specimens in the field.

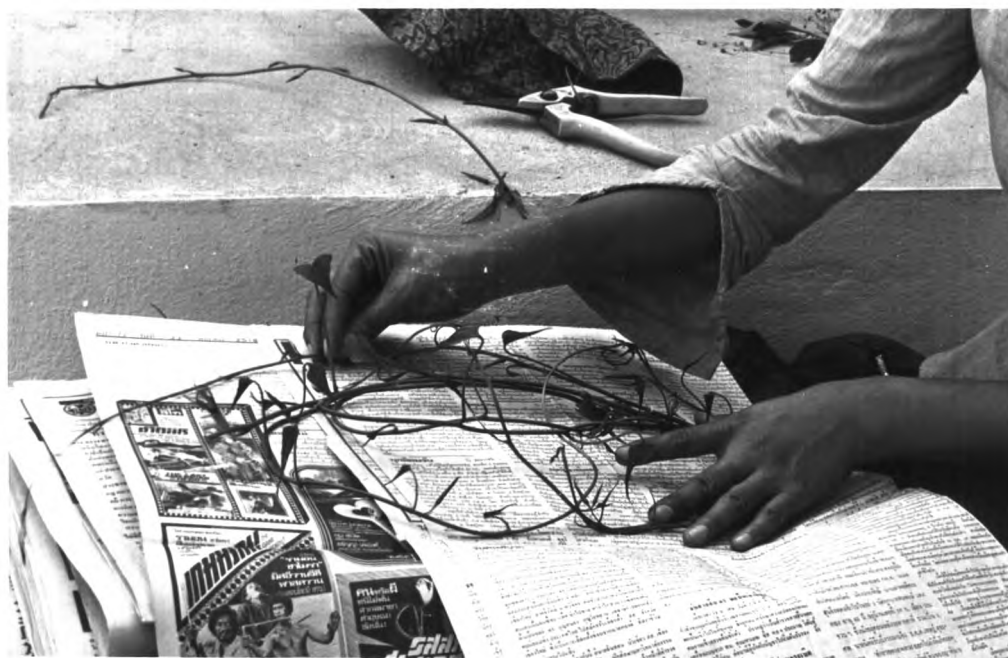


FIGURE XXXIX. At the camp, pressing specimens after field trip.



FIGURE XL. Mr. INTRA SRI-NON-MUANG, a local guide.

## VITA

NAME Miss Sum--ang Homchurn

DEGREE Bachelor of Science, Department of Botany

Chulalongkorn University, Academic Year 1975