

CHAPTER V

PRESENTATION

I presented the overall view of my thesis on the topic “ HIV prevention partner counseling and testing in Quang ninh, Hai phong and Hai duong, Northern provinces, Viet nam” on August 22nd, 2001 to the examination committee. The presentation was divided into four parts; introduction, essay, proposal and data exercised.

I presented the problem addressed in the thesis, evidences and reasons for alternative HIV prevention partner counseling and testing to reduce the HIV transmission in Vietnam.

In the proposal, I presented about my proposed study in the North Region, Vietnam to provide counseling and testing services to the clients. The proposed program, which I presented, was mainly divided into 3 components such as HIV counseling training to the health workers, implementation of HIV prevention partner counseling and testing, and evaluation of partner counseling and testing services.

The fourth part of the study is data exercise which was done in Quang ninh, Hai phong, and Hai duong, Northern provinces, Vietnam. I presented the rationale, objective, methodology, findings, conclusion and lessons learned from the data exercise. During presentation, the committee members asked me questions about my thesis, to which I tried to respond my best.

Similarly, the committee members gave me advises to improve my study and incorporated those advises in my thesis.

The slides were prepared and used for the presentation. The contents of the slides are mentioned and follow sequentially as shown to the examination committee.

TITTLE OF THESIS

**HIV PREVENTION PARTNER COUNSELING AND TESTING
IN QUANG NING, HAI PHONG, AND HAI DUONG,
NORTHERN PROVINCES, VIET NAM**

PROBLEM**ALTERNATIVE PARTNER COUNSELING AND TESTING****EVIDENCE**

1. 87% OF HIV INFECTED MEN HAVE HAD ACTIVE SEX
2. 43% OF CONDOM USED PROPERLY
3. 20% OF WIVES OF HIV MEN POSITIVE (Minh, Truong Tan., 1998)
4. 90% OF SEX PARTNERS DID NOT KNOW THEY ARE AT RISK

(Tien, Chu Van; A, Chung; Gary West. Situation Analysis, 2000)

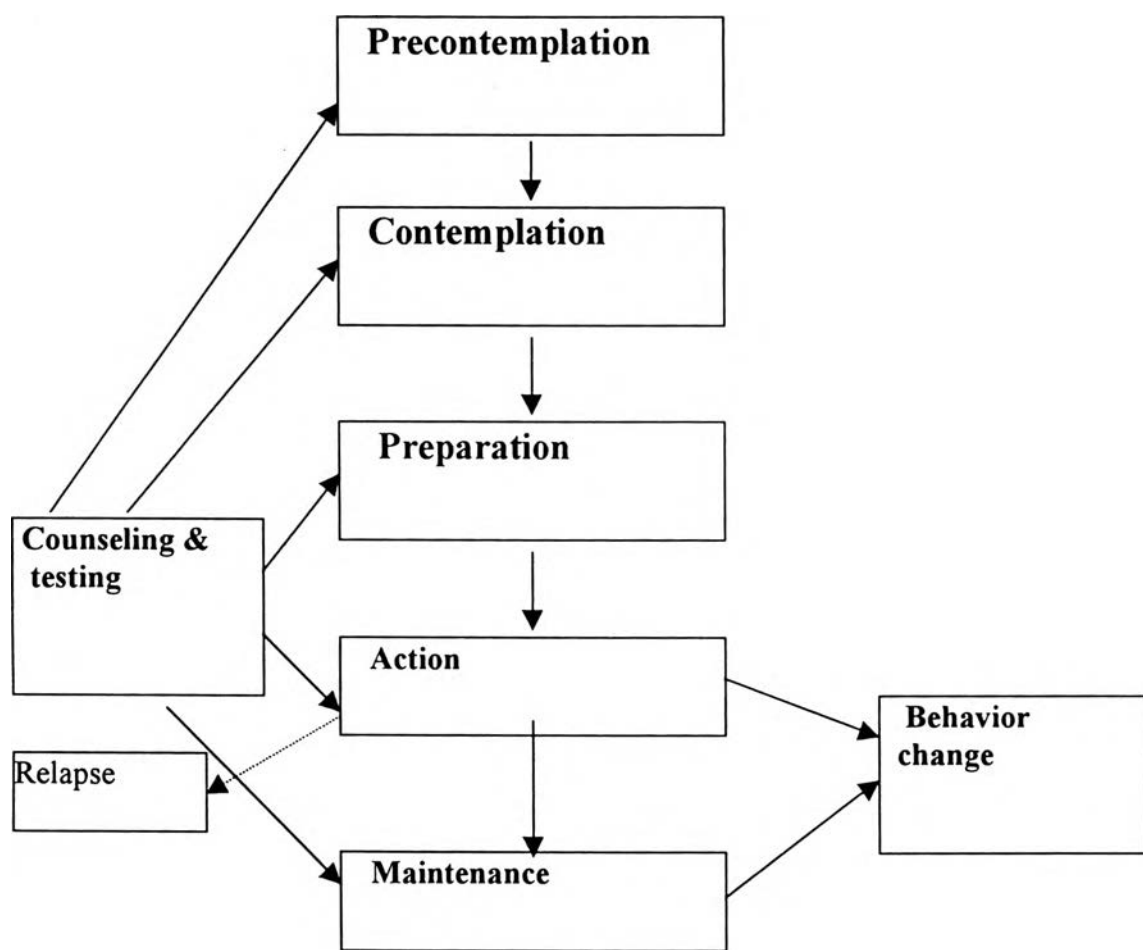
REASONS

1. TALKING ABOUT SEX IS A SENSITIVE ISSUE
2. NOT GAIN ACCESS TO HIV PREVENTION SERVICES
3. NOT INFORMED THEY ARE AT RISK AND THEIR HIV STATUS

NEED FOR COUNSELING AND TESTING

1. "CONTACT TRACING"
2. IDENTIFYING SEXUAL NETWORK
3. VIETNAMESE ORDINANCE

CONCEPTUAL FRAMEWORK OF PARTNER COUNSELING AND TESTING



Note: —> Positive impact

-----> Negative impact

Source: Modified from the transtheoretical model

(CDC-NCHSTP-Division of HIV/AIDS Prevention, USA)

GENERAL OBJECTIVE OF THE PROPOSAL

TO IMPROVE THE HIV PREVENTION COUNSELING & TESTING

SPECIFIC OBJECTIVES

- TO IMPROVE KNOWLEDGE & SKILLS
- TO REDUCE HIV INFECTION
- TO ENSURE THE QUALITY
- TO EVALUATE

ACTIVITIES OF THE PROPOSED PLAN

- PROVISION OF HIV PARTNER COUNSELING & TESTING TRAINING
- IMPLEMENTATION
- SUPERVISION
- IMPACT EVALUATION

TRAINING OBJECTIVES

- DESCRIBE THE DIFFERENCE
- DISCUSS THE BENEFITS
- EXPLAIN THE PRINCIPLES
- RECOGNIZE THE STAGE
- DEMONSTRATE THE QUALITIES AND SKILLS
- DESCRIBE AND DEMONSTRATE
- EXPLAIN

TRAINING METHODS

- GROUPS DISCUSSION
- ROLE PLAY
- DEMONSTRATION
- CASE STUDIES
- EXERCISE
- BRAINSTORMING
- LECTURE

IMPACT EVALUATION

- STRUCTURE QUESTIONNAIRE SURVEY
- REVIEW OF OFFICIAL STATISTICS

INTRODUCTION OF DATA EXERCISE

(QUANG NINH, HAI PHONG, AND HAI DUONG)

- MAJOR TOURIST SITES, PART OF THE ECONOMIC GROWTH TRIANGLE
- HAVE EXPERIENCED A SERIOUS HIV EPIDEMICS,
- RESULT FROM THE SENTINEL SURVEILLANCE,
- RESULT FROM PREVIOUS STUDIES,

OBJECTIVES

- TO PARTIALLY ACHIEVE THE RISK BEHAVIOR ASSESSMENT
- TO ASSESS THE HIV PREVALENCE
- TO IDENTIFY THE WILLINGNESS

METHOD

- HELD TWO COUNSELING TRAINING WORKSHOPS
- CONDUCTED PILOT STUDY
- UTILIZED THE LIST OF TESTED HIV POSITIVE MEN
- PROVINCIAL HEALTH OFFICIALS MUST ENSURE
- INTERVIEW LOCATIONS
- EACH INTERVIEW SESSION

METHOD (CONT.)

- AN "INFORMED CONSENT"
- ASKED TO GIVE NAME, ADDRESS, AND PHYSICAL DESCRIPTION
- NOTIFYING SEX PARTNERS
- SEX PARTNER INTERVIEW AND TESTING

RESULTS**1. SOCIO-DEMOGRAPHIC CHARACTERISTICS.**

• AGE:

MEN UNDER 29 OF 55% (74/135), MEAN: 29.19, RANGE: 18-45

FEMALE WAS 81% (110/135) MEAN: 26.07, RANGE: 17-43.

• EDUCATION:

MEN UNDER SECONDARY SCHOOL OF 72% (97/135)

FEMALE OF 76% (102/135)

SOCIO-DEMO (cont.)

• OCCUPATION

FARMER: 8.1% (22);

WORKER: 18.5% (50);

GOVERNMENT EMPLOYEE: 0.7% (2);

OTHERS: 72.6% (196)

• LIVING:

TOGETHER 76%

NOT TOGETHER 24%

2. KNOWLEDGE OF HIV/AIDS

- HIV/AIDS EPIDEMIC:
96.6% - 99.3% HAD CORRECT ANSWERS
- HIV/AIDS TRANSMISSION:
85.5% - 99.6% HAD CORRECT ANSWERS

3. SEXUAL BEHAVIORS

- AGE OF FIRST SEXUAL INTERCOURSE:
MEN BEFORE 17: 9.6%, MEAN: 21.13, RANGE: 14-30, MODE: 20
FEMALE: 11%, MEAN AGE: 20.44, RANGE: 16-28, MODE: 20
- FIRST SEX PARTNERS:
MEN: LOVER OF 59.3%; SPOUSE OF 25.2%; CSWs OF 12.6%
FEMALE: LOVER OF 45.9%; SPOUSE OF 53.3%; CLIENT OF 0.7%

SEXUAL (cont.)

	<u>MEN</u>	<u>FEMALE</u>
• CONDOM WITH FIRST PARTNER:		
	6% (8/135)	2.2% (3/135)
• CONDOM WITH CURRENT PARTNER: 38.5%		
• CONDOM IN THE FUTURE: 63.7%		65.2% (88)

SEXUAL (cont.)

	<u>MEN</u>	<u>FEMALE</u>
• PARTNER IN THE LIFE TIME:		
	MEAN: 4.5	MEAN: 1.1
	RANGE: 1-60	RANGE: 1-MANY
	MODE: 1	MODE: 1
• PARTNER LAST 12 MONTHS:		
	MEAN: 1.1	MEAN: 1.1
	RANGE: 1- 5	RANGE: 1- 6
	MODE: 1	MODE: 1

4. STD STATUS

	<u>MEN</u>	<u>FEMALE</u>
• 11% STDS IN THE PAST:		8.9%:
	73% OF DISCHARGE	66.7% OF DISCHARGE
	20% OF GEN-ULCER	16.7% OF GEN-ULCER
	6.7% OF OTHER	16.7% OF OTHER

5. DRUG USE BEHAVIORS

- 98.5% OF MEN & 1.5% (2/135) OF FEMALE HAD USING DRUGS
- 91% (121/133) OF IDUs EVER SHARED SYRINGES, NEEDLES
- 20% (27/133) IDUs STARTED USING DRUG SINCE 1998,
AND 78.5% (106) BEFORE 1998

6. PARTNER COUNSELING, TESTING AND HIV PREVALENCE

- 205 HIV MEN CONTACTED, 73% (150/205) WILLING
- 150 FEMALE CONTACTED, 90% (135/150) WILLING
88% (119/135) DIRECTLY CONTACTED
12% CONTACTED BY REFERRAL CONTRACT
91.1% CONTACTED AT HOME & WORK PLACES
8.9% OF CLINIC OR HEALTH STATION

PARTNER (cont.)

- 96.3% (130/135) FEMALE CONTACTED IN A CONFIDENTIAL MANNER
- HIV PREVALENCE AMONG FEMALE SEX PARTNERS OF HIV MEN WAS
16.3% (22/135).

7. ASSOCIATED FACTORS:

- HIV MEN HAD STARTED DRUG USE BEFORE & AFTER 1998 (OR=0.28, 95% CI=0.09, 0.84), P = 0.008
- FEMALE HISTORY OF STDs (OR=6.69, 95% CI=1.65, 27.51)
- HIV MEN PLAN USING CONDOM IN THE FUTURE (OR=0.26, 95% CI=0.09, 0.73)
 - KNOWLEDGE NO RELATIONSHIP (P=0.65).

8. CONCLUSION

- FEMALE SEX PARTNERS AT HIGH RISK OF HIV INFECTION
- FEMALE SEX PARTNERS OF HIV MEN DETECTED SINCE 1998 & STDs GREATER RISK OF HIV INFECTION.
 - KNOWLEDGE ASSOCIATED WITH HIV FEMALE SEX PARTNER

9. RECOMMENDATION

- EXPAND “HIV PREVENTION COUNSELING & TESTING SERVICES”
- COUNSELING TRAINING IS THE IMPORTANT COMPONENT
- EARLY DETECTION AND TREATMENT OF STDs
- IMPLEMENT CONDOM PROMOTION CAMPAIGN

Thank you